

FUN PHILATELY

NEWSLETTER

ISSN 1171-6029

June 2013

Produced by the PHILATELIC YOUTH COUNCIL OF N.Z. (Inc.)
PO Box 2979, Shortland St, Auckland 1140
www.nzpf.org.nz/youth/youth.html

With funding from 
Community Organisation
Grants Scheme

GOLD ACHIEVEMENT AWARD

THEMATIC PHILATELY by Anna McTaggart

Thematic stamp collecting is the building of a collection or exhibit, which is based on a particular theme or topic, rather than a country or particular stamp issue.

Many of the first postage stamps were definitive, depicting reigning monarchs and other heads of state. Most people collected these definitives or collected countries (such as the United Kingdom or Brazil.)

Eventually countries started to issue stamps on a wider range of subjects, making it possible to collect a specific subject; such as dogs or birds.

However, as the amount of stamps issued worldwide increased, it became extremely difficult to collect every stamp available on a particular subject (especially for popular subjects such as "birds" on which several million stamps have been issued worldwide.)

Because of this people began to collect by theme.

For example someone collecting dog stamps would focus on a particular aspect of the theme, such as: dogs as pets, working dogs, or specific breeds instead of trying to collect every dog stamp available.

Collecting thematically provided numerous themes to choose from. Often people choose subjects which they have a connection to, like their job, hobbies or other interests; for example an author may collect stamps on literature or a sports enthusiast might collect stamps on rugby.

When seeking material for a collection, there are a variety of places to search. Stamp Shows, stamp clubs, dealers and the internet are some good places to find a wide range of philatelic material.

Material acquired for a thematic collection or exhibit should be in good condition, and the following should be avoided whenever possible: Philatelic material with the pictures obscured by large or smudgy postmarks, ripped, bent, faded, or crumpled items and material which is marked, water damaged, or has damaged perforations.



Anna being presented with her certificate and Gold Achievement badge by Tim Beach, PYC Chairperson

When planning to turn part of a collection into an exhibit it is important to realise that thematic exhibiting involves all philatelic material, not just postage stamps. When exhibiting it is important to try and include at least three different different philatelic items per page, for example: miniature sheets, postal stationery, gutter pairs, blocks and se-tenant strips; to name a few.

Another crucial point to remember is that the philatelic material must be arranged so that it tells the story of your theme.

Collecting and exhibiting thematically is interesting, informative, fun and teaches you a great deal about your chosen subject.

WHAT'S IN THE SHOE BOX

For many years I have collected envelopes with interesting markings on them. They live in a shoe box, why there? It is the best place that I can think of for storing them. Envelopes are hard to store without

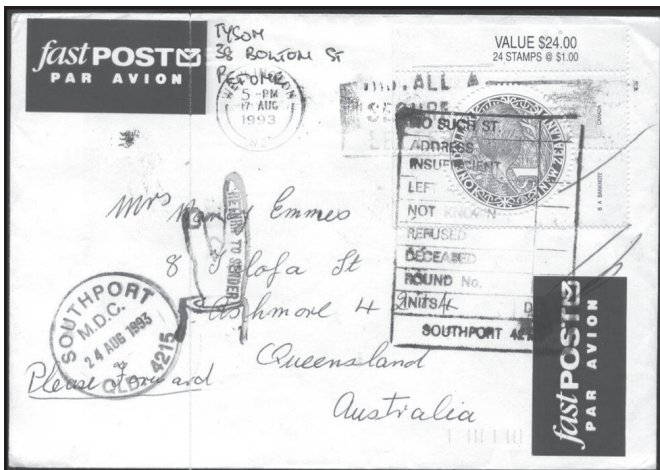
damaging them, without folding or creasing or bending. Many philatelic items are soaked off envelopes and then they have lost their Postal History story, which is in the markings and cancellations.

The 1978 cover on the right from Italy, is a pre-stamped envelope. It has also has a baseball stamp and a pictorial postmark featuring baseball. To add to its interest, it is an airmail letter, therefore an Italian Air Mail label has been added, and an extra stamp to make up the airmail rate to New Zealand. Now I would really like that baseball stamp on the bottom left corner for my collection. Do I soak it off the envelope, NO NO NO. That would destroy the postal history and the thematic appeal of the cover.

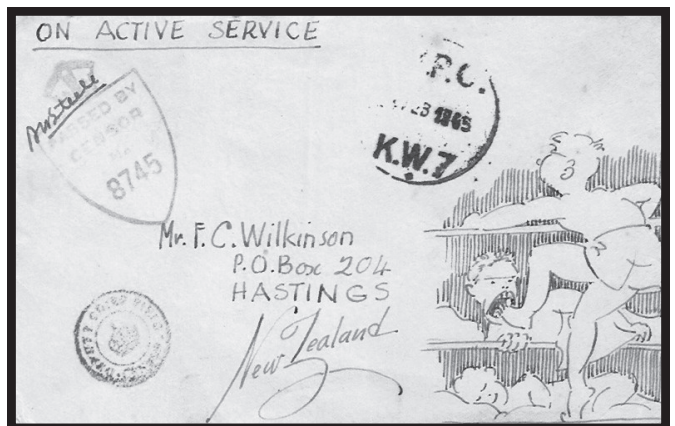


On the left is a cover which was sent to Australia, and has been returned to New Zealand, because the addressee had left the address.

The blue round one dollar Kiwi stamp is very hard to find on cover, and although the postal markings are quite heavy, it is still an interesting piece of postal history.

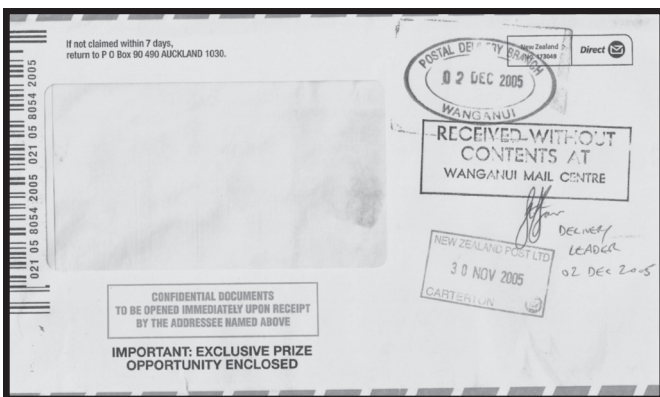


The envelope on the right attracts you to the humorous drawings bottom right, but the main philatelic interest is that no stamp has been attached. Surface mail from 1941 was free for armed forces based in Egypt. The markings are from the base that this soldier was attached to, and would have been put on by the administration corp.



Brain Teaser!!

The local post office has run out of all stamps except for the 9 cent and the 13 cent stamps. However it is clear that many values can be made up using various numbers of the two stamps available. What is the largest value that cannot be made up from the two stamps?



The 2005 cover above is quite unique with marking from Wanganui Mail Centre.

To see a postal delivery employee signature on an envelope is very unusual, and as can be seen by the dates, quite recent.

Editor thanks Geoff Tyson and John Waller for the use of philatelic material used in this article.

EXHIBITION PROTECTORS

NEW SHIPMENT (size 248 x 290mm)

Pack of 25 \$20

Pack of 100 \$55

Order from – PYC of NZ, PO Box 2979, Auckland 1140
Money with your order please.

All prices include GST and postage within NZ.



Louisa being presented with her certificate and Gold Achievement badge by Tim Beach, PYC Chairperson. Her essay was on the front page of the March issue of Fun Philately.

Answer to Brain Teaser

95 cents

Pukekohe Stamp Club

Junel and Rocel with their one page entries for the 'Open Day' competition on the theme of Europe.

Junel has been passing on her knowledge gained at stamp camps to Rocel. Both girls produced quality entries that surpassed many of the adult efforts.



QUESTION & ANSWER

Q. Why haven't British stamps got the name of the country on them?

A. Great Britain was the first country in the world to have stamps and there was no need to include the name of the country because there were no other stamps at the time. As Britain began like that, she has never changed.



CONDITON PROBLEMS

Damage can cause a stamp to be worth much less or perhaps nothing at all, in comparison to a sound copy. Tape can ruin a stamp. Whether the damage is on front or back, or visible at all at first glance, it still makes the stamp less desirable to most collectors. This is why it is especially important to handle stamps carefully to avoid creases, greasy fingers, stains and scuffs.

Enjoy finding the words below in the letter table to the right.

STAINED
CREASES
THIN
MISSING PERFS
CUT
HEAVY CANCEL
REGUMMED
TEARS
TAPED

COUNTERFEIT
SCUFFED
STUCK DOWN
REPAIRED
PINHOLE
REPRINT
WRINKLED
FADED
NO GUM

C	O	U	N	T	E	R	F	E	I	T	A	D	S	H
L	S	P	I	N	E	E	A	C	L	U	N	E	T	E
I	D	T	A	P	O	P	D	E	T	C	F	N	U	A
N	O	A	R	T	T	A	E	S	Q	O	S	I	C	V
I	E	I	A	N	S	I	D	H	I	F	R	A	K	Y
H	N	D	L	O	U	R	W	I	R	Y	U	T	D	C
T	S	C	U	F	F	E	D	E	P	G	U	S	O	A
E	E	R	T	A	O	D	P	I	N	O	P	S	W	N
R	H	E	R	R	E	G	U	M	M	E	D	D	N	C
T	L	A	U	E	N	T	S	N	S	H	E	Q	R	E
N	T	S	P	I	L	U	O	I	R	D	P	E	W	L
O	Y	E	S	U	O	P	S	N	T	E	A	R	S	I
G	T	S	L	U	Q	I	O	P	A	B	T	U	R	K
U	I	T	W	R	I	N	K	L	E	D	T	A	E	P
M	Y	U	E	R	W	I	O	E	L	O	H	N	I	P

ACHIEVEMENT AWARDS

There are four awards, Bronze, Silver-Bronze, Silver and Gold

The Bronze and Silver-Bronze Awards can be examined by a stamp club leader, school teacher, youth group leader or adult stamp collector. The Silver and Gold Awards must be examined by a person approved by the Philatelic Youth Council Executive.

Bronze Achievement Award Form

Applicant Name _____ Date of Birth _____

Postal Address _____

The Applicant:

1. Has formed a stamp collection over a period of more than six months Yes _____
2. Has given a short talk (approx 2 minutes) on four pages from the collection Yes _____
3. Has successfully answered simple questions on -
 - a) the pages shown for the talk Yes _____
 - b) general philately Yes _____
4. Is able to mount stamps correctly Yes _____
5. Is able to remove stamps from paper correctly Yes _____

Note: The questions in 3a should relate to the type of collection formed i.e. for Thematic collectors questions on the theme, for collectors of NZ, questions on New Zealand stamps.

The questions in 3b must be on general philately, suggested questions are:

- a) What is the purpose of perforations?
- b) What is the purpose of Watermarks?
- c) What is a First Day Cover?
- d) Who issued the World's first postage stamp?
- e) Why should you use tweezers?
- f) For what purpose would you use a stamp catalogue?

Four to six questions answered adequately is sufficient.

Examiner's Signature _____

Examiner's Name _____

Address _____

Phone _____

Club Position or Occupation _____

Send the completed form to PYC Achievement Awards, PO Box 2979, Auckland 1140