

**Rabbit Anti-CD23 [MD78R]: RM0033, RM0033RTU7**

**Intended Use:** For Research Use Only

**Description:** CD23 antigen is a 45-60 kDa membrane glycoprotein identified as a low affinity receptor for IgE production as well as a receptor for lymphocyte growth factor. CD23 is found in some mature B-cell lymphomas and in Reed-Sternberg cells in Hodgkin disease.<sup>1</sup> Follicular dendritic cells and some activated B-cells within germinal centers express CD23 in high density and mantle zone B-cells are stained weakly.<sup>2</sup> The majority of chronic lymphocytic leukemias/small lymphocytic lymphomas are CD23 positive, whereas mantle cell lymphomas are generally negative, so this marker is useful when applied with other markers to separate the small cell lymphomas.<sup>2</sup> Precursor B and T lymphomas, myeloid neoplasms, and mature T-cell lymphomas are CD23 negative and other small cell lymphomas are occasionally positive.<sup>3</sup> CD23 is also positive on activated mature B-cells expressing IgM or IgD, monocytes/macrophages, follicular dendritic cells, T-cell subsets, eosinophils, Langerhans cells and small lymphocytic lymphoma/chronic lymphocytic leukemia (SLL/CLL).

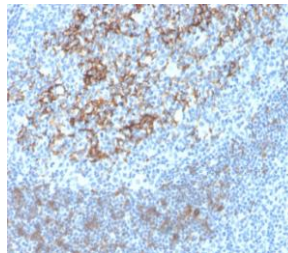
**Specifications**

Clone: MD78R  
 Source: Rabbit  
 Isotype: IgG  
 Reactivity: Human  
 Immunogen: Recombinant fragment around aa 221-321 of human CD23 protein  
 Localization: Membrane  
 Formulation: Antibody in PBS pH7.4, containing BSA and ≤ 0.09% sodium azide (NaN<sub>3</sub>)  
 Storage: Store at 2°- 8°C  
 Applications: IHC  
 Package:

Description	Catalog No.	Size
CD23 Concentrated	RM0033	1 ml
CD23 Prediluted	RM0033RTU7	7 ml

**IHC Procedure\***

Positive Control Tissue: Tonsil, B cell chronic lymphocytic leukemia  
 Concentrated Dilution: 50-200  
 Pretreatment: Tris EDTA pH9.0, 15 minutes using Pressure Cooker, or 30-60 minutes using water bath at 95°-99°C  
 Incubation Time and Temp: 30-60 minutes @ RT  
 Detection: Refer to the detection system manual  
 \* Result should be confirmed by an established diagnostic procedure.



FFPE human tonsil stained with anti-CD23 using DAB

**References:**

- Follicular dendritic cells in follicular lymphoma and types of non-Hodgkin lymphoma show reduced expression of CD23, CD35 and CD54 but no association with clinical outcome. Jin MK, et al. *Histopathology*. Mar;58(4):586-92, 2011.
- P2X7 receptor activation induces cell death and CD23 shedding in human RPMI 8226 multiple myeloma cells. Farrell AW, et al. *Biochim Biophys Acta*. Nov;1800(11):1173-82, 2010.

Doc. 100-RM0033  
Rev. C