

Gordon's Stochastics Bar Indicator For Slinky Filter Chart

This goes on the 8Range chart for Slinky Confirmation for taking entries off the 4 Range chart

This indicator will not place the 2 Stochastics on your 8Range chart. You will need to do that per the 8Range chart confirmation instructions which you can download from the same link you did for your indicator and these instructions. You can choose not to put your Stochastics on your chart and Gordon's indicator will plot and you will still know what trade entry direction you are looking for. I like having the 2 Stochastics on there as well so I can see divergence when it occurs. The choice is yours.

1. Once you purchase the indicator you will be directed to a download page where you can download the zip file and you will also receive an email with the download link (screenshot below). The link will only be good for 2 days so please be sure to download it and save to your computer ASAP.

Dear trisha,

You can download Gordon's Stochastic Bar at

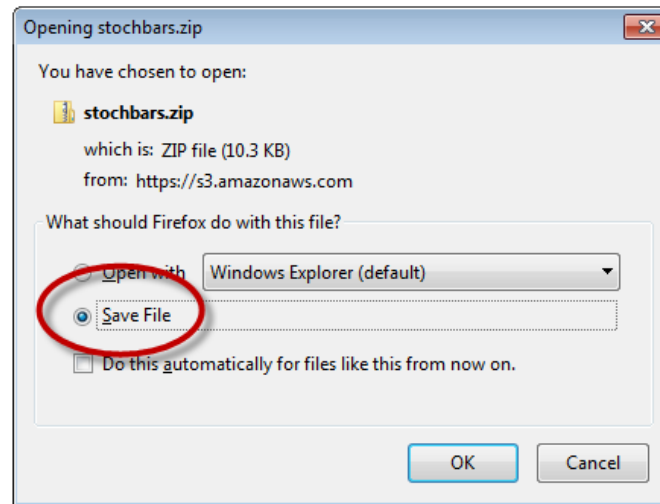
<https://www.e-junkie.com/d/?t=jg-ny0x3yd04da41be&d=s7ptc&c=12ak>

Please note, the download link will expire after 120 hours from now or after 4 attempts, whichever event happens first.

Thanks very much for your order! Be sure to go to if you need to see how to install the indicator once you download it.

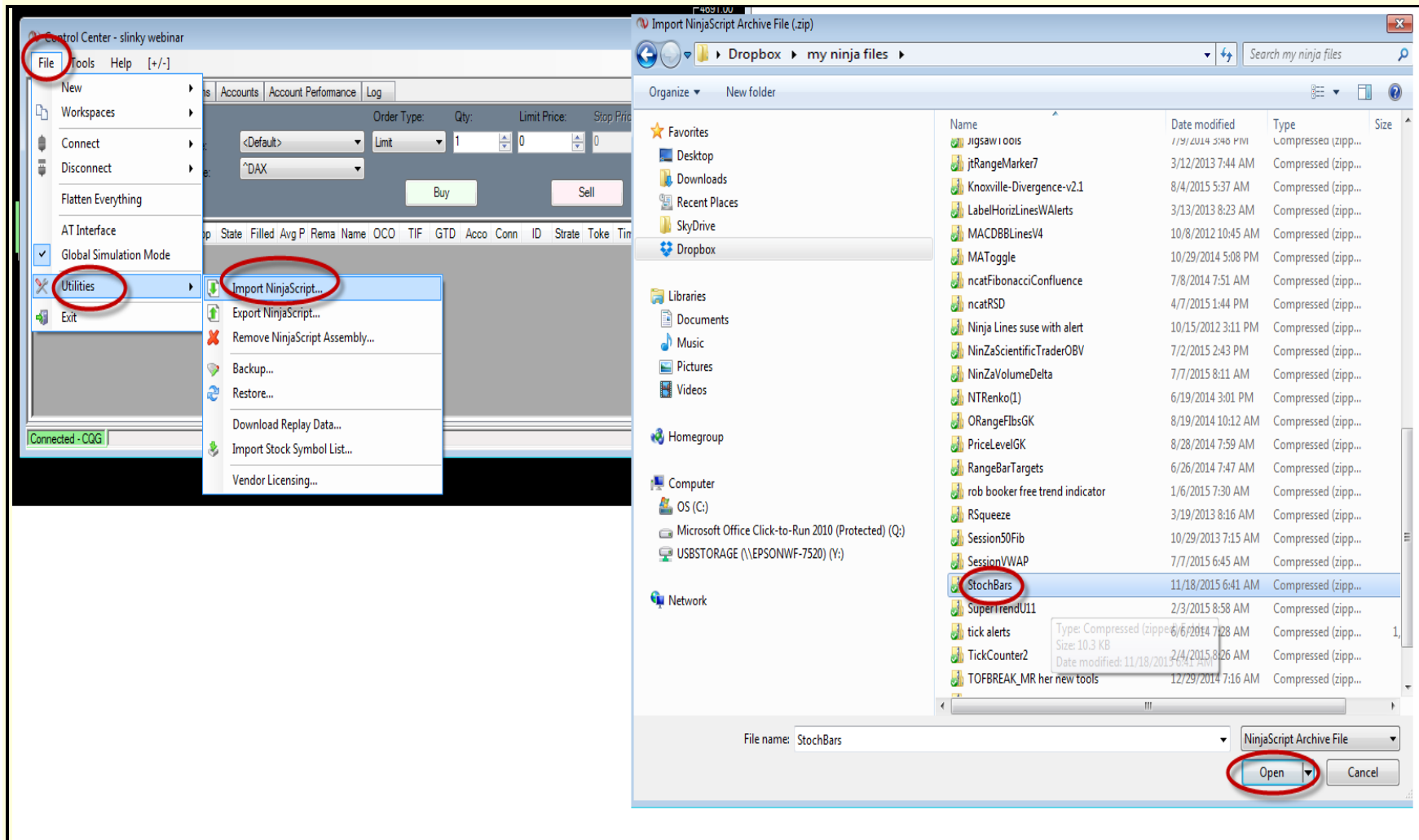
1. Once you click on your link to download a window like this will open, you will click on the Click here to download Gordon's Stochastic Bar (see below). Once you do you will get a dialog box open asking you to save or open the file Choose Save File. **DO NOT OPEN FILE**

- [Click here](#) to download **Gordon's Stochastic Bar**.



2. Once you choose save file save it somewhere you can easily locate it. The file name is stochbars if you are looking for it once you download it.

3. Now you will import this zip file into Ninja from your Control Center. Choose file tab, utilities, import Ninjascript then find the file you saved (StochBars), choose it and hit OK (see below) Ninja will tell you when complete.



5. Once you have successfully imported the indicator go to your 8 Range chart and right click and choose indicators



6. Now find the indicator on your list, it is called StochBars, double click on it to add it to your chart and you will now have a settings dialog box open (see below) See the settings I am using from the screenshot below. **Be sure to change Calculate on bar close to false.**

The screenshot shows the 'Indicators' dialog box with the 'StochBars' indicator selected. The 'Parameters' tab is active, showing settings for 'Ploty' (95), 'Data' (Calculate on bar close: False, Input series: NQ 12-15 (8 Range), Maximum bars look back: TwoHundredFiftySix), 'Visual' (Auto scale: True, Displacement: 0, Display in Data Box: True, Label: StochBars, Panel: 2, Price marker(s): True, Scale justification: Right), and 'Plots' (Plot0: Line: Solid: 8px, Color: Green, Dash style: Solid, Plot style: Line, Width: 8). The 'Visual' tab is also visible, showing 'Auto scale' (True), 'Displacement' (0), 'Display in Data Box' (True), 'Label' (StochBars), 'Panel' (2), 'Price marker(s)' (True), and 'Scale justification' (Right). The 'Plots' tab is also visible, showing 'Plot0' (Line: Solid: 8px, Color: Green, Dash style: Solid, Plot style: Line, Width: 8). The 'Visual' tab is also visible, showing 'Auto scale' (True), 'Displacement' (0), 'Display in Data Box' (True), 'Label' (StochBars), 'Panel' (2), 'Price marker(s)' (True), and 'Scale justification' (Right). The 'Plots' tab is also visible, showing 'Plot0' (Line: Solid: 8px, Color: Green, Dash style: Solid, Plot style: Line, Width: 8).

Using 95 will place this above your Double Stochastics if you place this indicator in the same panel as your Stochastics. You can try any number you like here, 5,20, etc.

If you would like to make the indicator bar skinnier you can change that below under Plots.

If you would like to change the 95 to 80 this will plot this bar on the 80 line of your Stochastic if you place this indicator in the same panel as the Double Stochastics.

I like them in the same panel as my Stochastics so I choose the same panel number here that I am using for the Stochastics.

Right now the default colors Gordon is using for the bar are Magenta (for shorts) and Corn Flower Blue (for longs)

Hey Joe, above where it says ploty 95, I have it now on 50, this will put it in the 1/2 way area of the stoch pane. You can choose to also not plot it. This will color pickish for short, blue long but honestly I don't even notice it since we get the long, short text showing up.



Taking Slinky entries off the 4Range using the 8Range chart filter.

Looking for Slinky **Longs** off 4Range when **Green** Stochastic is above our **Red** Stochastic

Looking for Slinky **Long** when **Red** Stochastic is in Over Bought (does not matter where the green line is.)

Looking for Slinky **Shorts** when **Green** Stochastic is below the **Red** Stochastic.

Looking for Slinky **Shorts** when **Red** Stochastic is in Over Sold (does not matter where the green line is)

This is the StochBar, it will color magenta for shorts and corn flower blue for longs. I have it plotting just above my Double Stochastics which is using 95 as you saw in the previous screen shot and this is plot0 width 8

Text will tell us what we are looking for. It will tell us **short** when we have our green Stochastic below our red Stochastic. It will tell us **short os** when we have our red Stochastic line in over sold.

Text will tell us **long** when our green Stochastic line is above our red line and it will tell us **long ob** when we have our red stochastic in over bought.