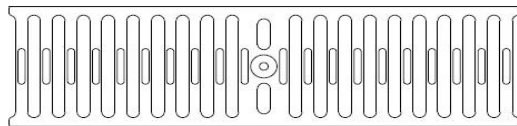
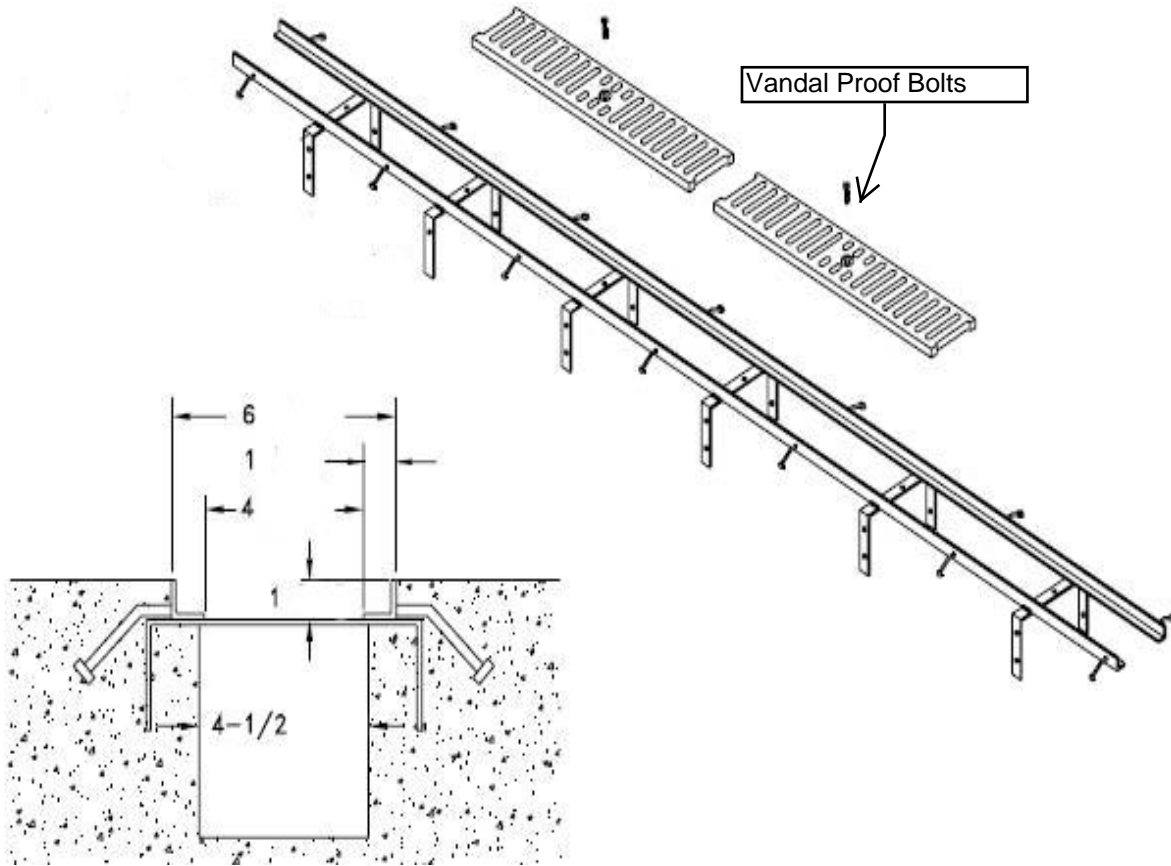


# WICKETTS STAINLESS SPECIFICATION

Frame and Grate  
WFG-6-CG-ADA



Cast Iron Slotted Grate Class "D"

**Engineering Specification:** Heavy Duty Steel 1" x 1" x 3/16"x 10'-0" Long frame with 1/4" Studs; ADA Cast Iron Grate.

WICKETTS STAINLESS, LLC  
2618 San Miguel Dr. Bldg.# 376  
Newport Beach, CA 92660  
(951) 858-2548 PH.  
(951) 638-9059 FAX.  
sales@wickettsstainless.com  
www.wickettsstainless.com



M-080137

Approved for Manufacturing

Company: \_\_\_\_\_

Signature: \_\_\_\_\_

Print: \_\_\_\_\_ Date: \_\_\_\_ / \_\_\_\_ / \_\_\_\_

NON- CANCELABLE NON-RETURNABLE