

**Rabbit Anti-Cereblon/CRBN Polyclonal: RC0186**

**Intended Use:** For Research Use Only

**Description:** Cereblon or CRBN is a 442 amino acid protein which is highly concentrated in human brain tissue. Cereblon functions energy metabolism, learning and memory. Cereblon acts as a protease in mitochondria and regulates the assembly of KCNT1, as well as the surface expression of KCNT1 in brain regions known to affect memory and learning, such as the hippocampus. The gene encoding Cereblon belongs to a family of ATP-dependent ion proteases that play a role in membrane trafficking and proteolysis. Defects in the Cereblon gene are associated with mild mental retardation.

**Specifications**

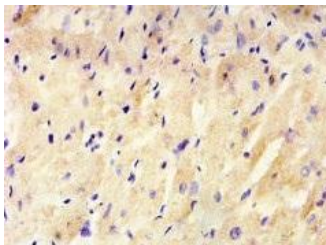
Clone: Polyclonal  
Source: Rabbit  
Isotype: IgG  
Reactivity: Human, mouse, rat  
Localization: Cytoplasm  
Formulation: Antibody PBS pH 7.4, containing BSA and  $\leq 0.09\%$  sodium azide (NaN<sub>3</sub>)  
Storage: Store at 2°- 8°C  
Applications: IHC, IF, WB  
Package:

Description	Catalog No.	Size
Cereblon/CRBN Polyclonal Concentrated	RC0186	1 ml

**IHC Procedure\***

Positive Control Tissue: Thyroid and heart tissues  
Concentrated Dilution: 10-50  
Pretreatment: Citrate pH6.0 or EDTA pH8.0, 15 minutes using Pressure Cooker, or 30-60 minutes using water bath at 95°-99°C  
Incubation Time and Temp: 30-60 minutes @ RT  
Detection: Refer to the detection system manual

\* Result should be confirmed by an established diagnostic procedure.



FFPE human heart stained with anti-CD180 using DAB

**References:**

1. Proteasome Activation by Small Molecules. Leestemaker Y, et al. Cell Chem Biol 24:725-736.e7, 2017.
2. Cereblon negatively regulates TLR4 signaling through the attenuation of ubiquitination of TRAF6. Min Y, et al. Cell Death Dis 7:e2313, 2016.
3. Measuring cereblon as a biomarker of response or resistance to lenalidomide and pomalidomide requires use of standardized reagents and understanding of gene complexity. Gandhi AK, et al. Br J Haematol 164:233-44, 2014.