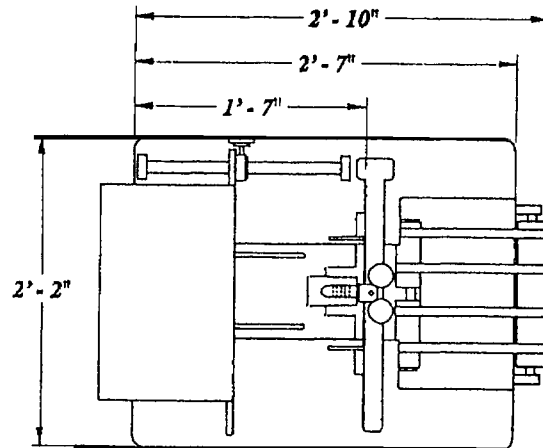
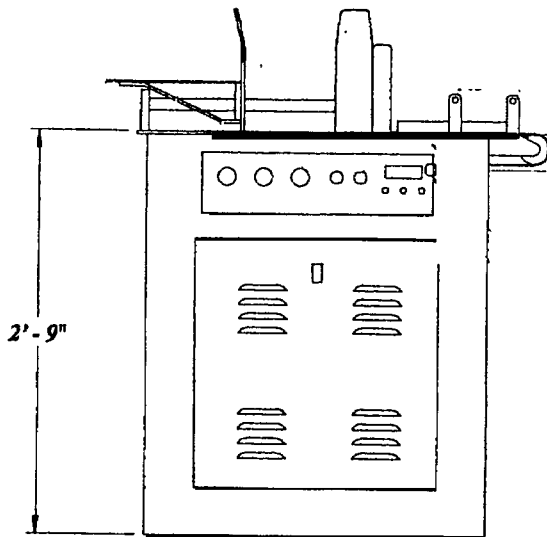




KR 224 FEEDER BASE

Kirk-Rudy, Inc. • 125 Lorraine Parkway • Woodstock, GA 30188
Phone: (770) 427-4203 • Fax: (770) 427-4036

Consistently feeds a wide assortment of product including magazines, cards, newspapers, knock-down boxes and envelopes.



Features:

- ◆ Vacuum Shuttle feeder.
- ◆ Quick release jam kit.
- ◆ Semi-automatic lubrication system
- ◆ Counter
- ◆ Removable center table for easy belt changes
- ◆ Jam detect skid bar
- ◆ Oil-less high volume vacuum pump

Specifications:

- ◆ Mechanical Power Requirements:
1 HP Drive
- ◆ Electrical Power Requirements:
220 VAC
60 Hz
15 Amp
- ◆ Media Size (paper):
Minimum: 3.0" x 5.0"
Maximum: 17.0" x 17.0"
Single Sheet: 0.007" thick
- ◆ Physical Dimensions:
Length: 34.0"
Width: 26.0"
Height: 33.5"

**Specifications subject to change without notification

**Guards have been removed for clarity; do not operate machine without guards in place