

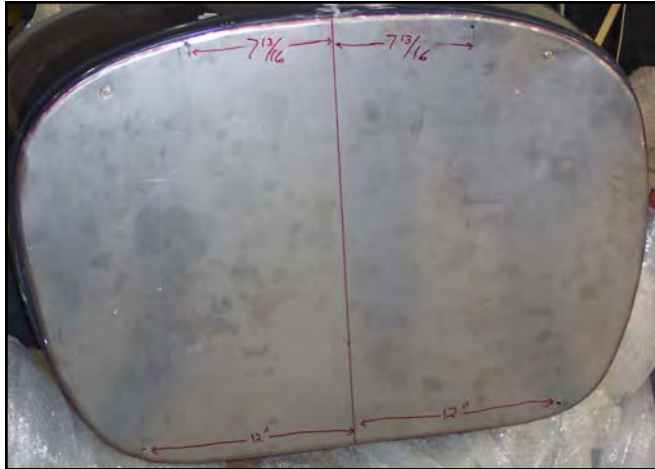


Firewall Fabrication

Date Completed:

Required material and tools: #307 stainless steel firewall material 0.032, hand shear, edge roller, Drill bits; 3/32", 1/8", 3/16", markers, ruler, carpenters square.

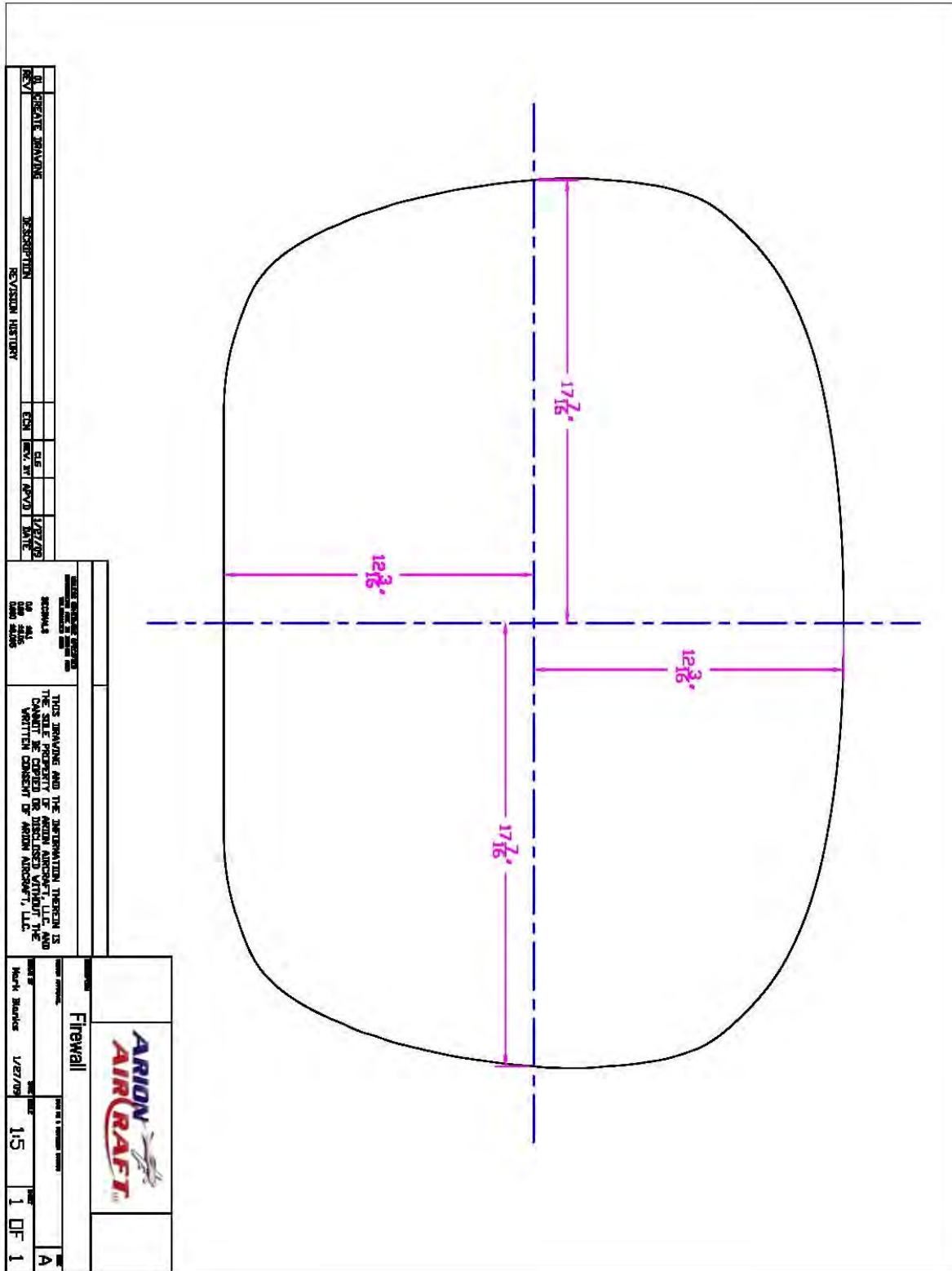
1. Using the drawing on page 2, figure #1. Mark the vertical and horizontal center lines of the flat stock material.
2. Level the fuselage, find the vertical center line of the fuselage,
3. Match the vertical line on the flat stock with that on the fuselage. Trace the firewall shape onto the stainless stock.
4. From the trace you have just made, measure in 1/8" and copy the firewall shape 1/8" smaller. This will provide good edge distance on the firewall material from the cowling.
5. Cut the firewall out on the smaller line.
6. File the edges smooth the use a edge roller to put a slight curve on the outside of the firewall.



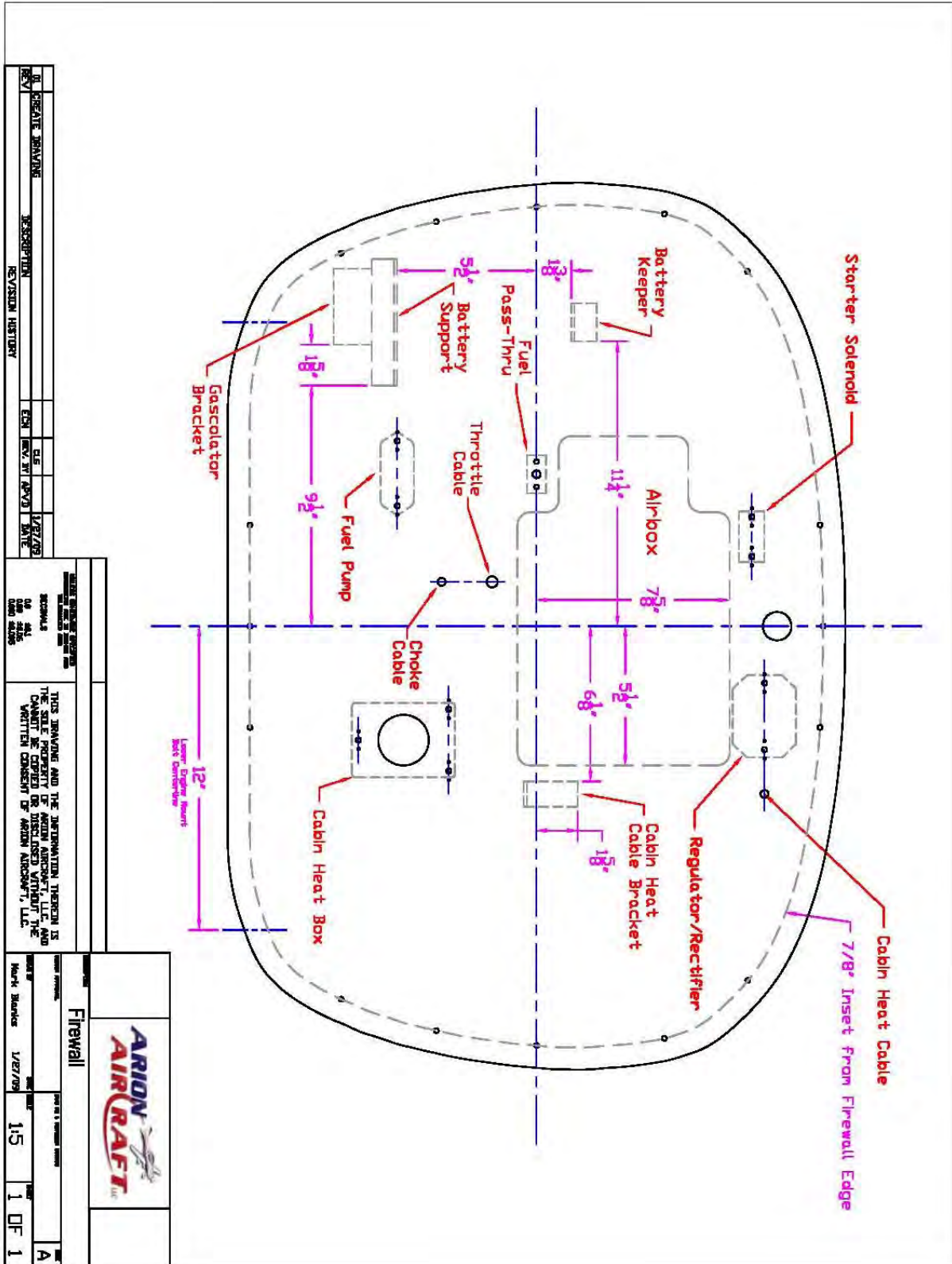
Firewall layout

1. Use the following picture and the CAD drawings on the next few pages to layout the holes and locations of the accessories for your firewall forward.
2. **Do not pre drill the motor mount holes to the firewall this must be done as shown in the motor mount installation section. The drawing in this section will leave those areas open for that!**





Firewall vertical and horizontal center lines figure #1



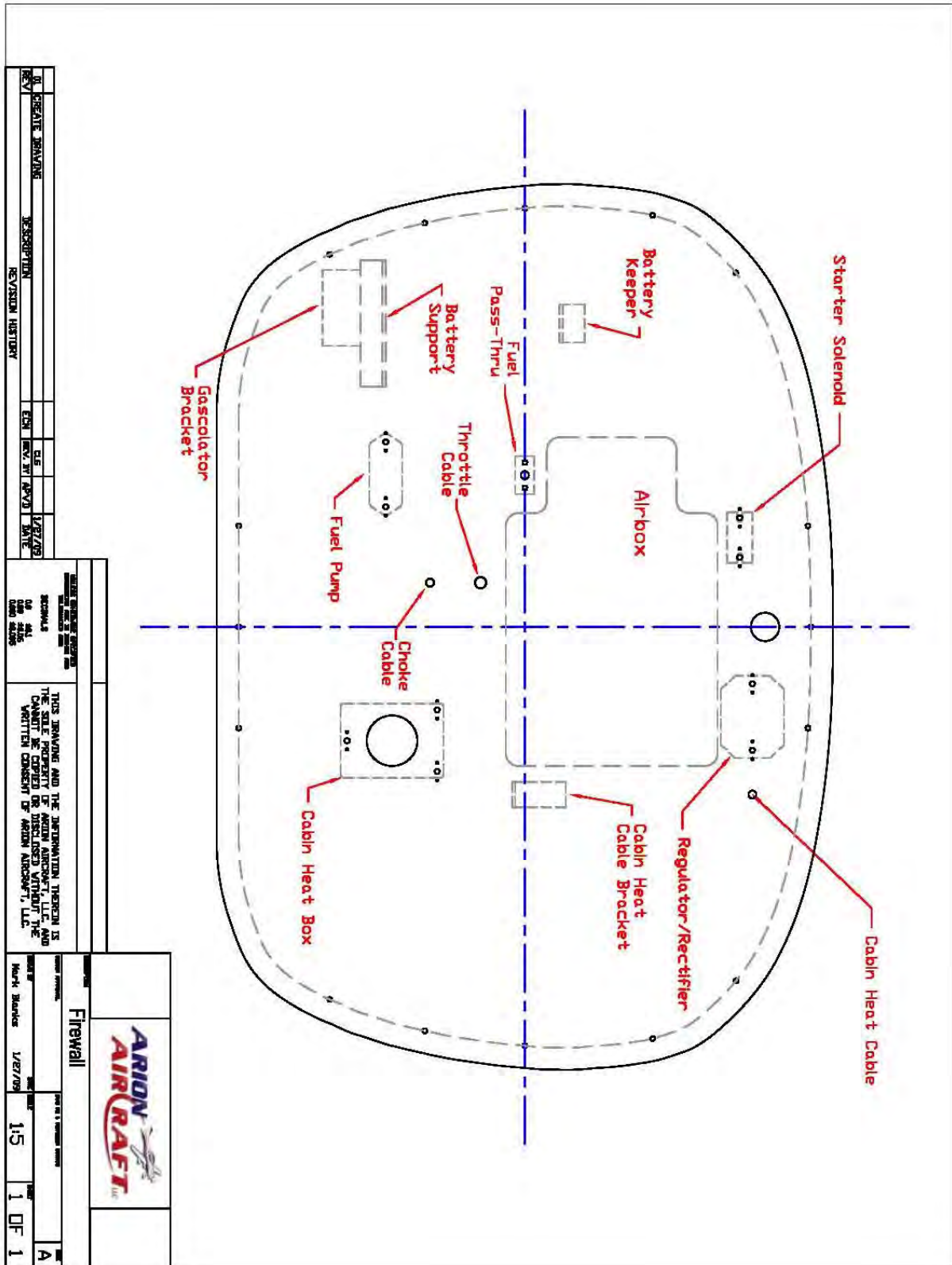
REV	DESCRIPTION	DATE	BY	CHK
01	CREATE DRAWING	1/27/09		
02	REVISION HISTORY			

THIS DRAWING AND THE INFORMATION THEREIN IS THE PROPERTY OF ARION AIRCRAFT, LLC, AND IS NOT TO BE REPRODUCED OR TRANSMITTED IN ANY FORM OR BY ANY MEANS, ELECTRONIC OR MECHANICAL, INCLUDING PHOTOCOPYING, RECORDING, OR BY ANY INFORMATION STORAGE AND RETRIEVAL SYSTEM, WITHOUT THE WRITTEN CONSENT OF ARION AIRCRAFT, LLC.

ARION AIRCRAFT LLC

Part No: 1
 Title: Firewall
 Scale: 1:5
 Date: 1/27/09
 Rev: 0
 Sheet: 1 of 1

Firewall hardware and accessories dimensions figure #3



Firewall hardware and accessories Layout figure #4