

A faded, historical photograph of a steam locomotive pulling a train across a bridge over a river. The locomotive is dark and has a large smokestack. The bridge is a simple wooden or steel structure. The river is wide and calm. In the background, there are trees and some buildings. The overall tone is sepia or light brown.

MAD RAILS III

**AN HISTORIC LOOK BACK ON
RAILROADS IN THE MADISON AREA**

A CLINIC COMPILED BY BOB WUNDROCK

One Shares,

No

STOCK CERTIFICATE.



Issued, July 14 1857 Interest Date, July 14 1857

This is to Certify, That Darwin Clark of Madison
is entitled to One Shares of the Capital Stock of the

Watertown and Madison Rail Road Company,

subject to all the payments due and to grow due thereon; of which there
has been paid One hundred per centum, amounting to
Fifty Dollars up to the date of issue.

This Stock is transferable only upon the surrender of this Certificate to the Secretary, and assignment by endorsement thereon by the holder in person, or by his certain Attorney, executors, administrators, guardians or trustees, and entry in the Transfer books of the Company.

In Witness Whereof, The Directors of said Company have caused the Common Seal of the Company to be here-to affixed, and this Certificate to be signed by the President and countersigned by the Secretary.

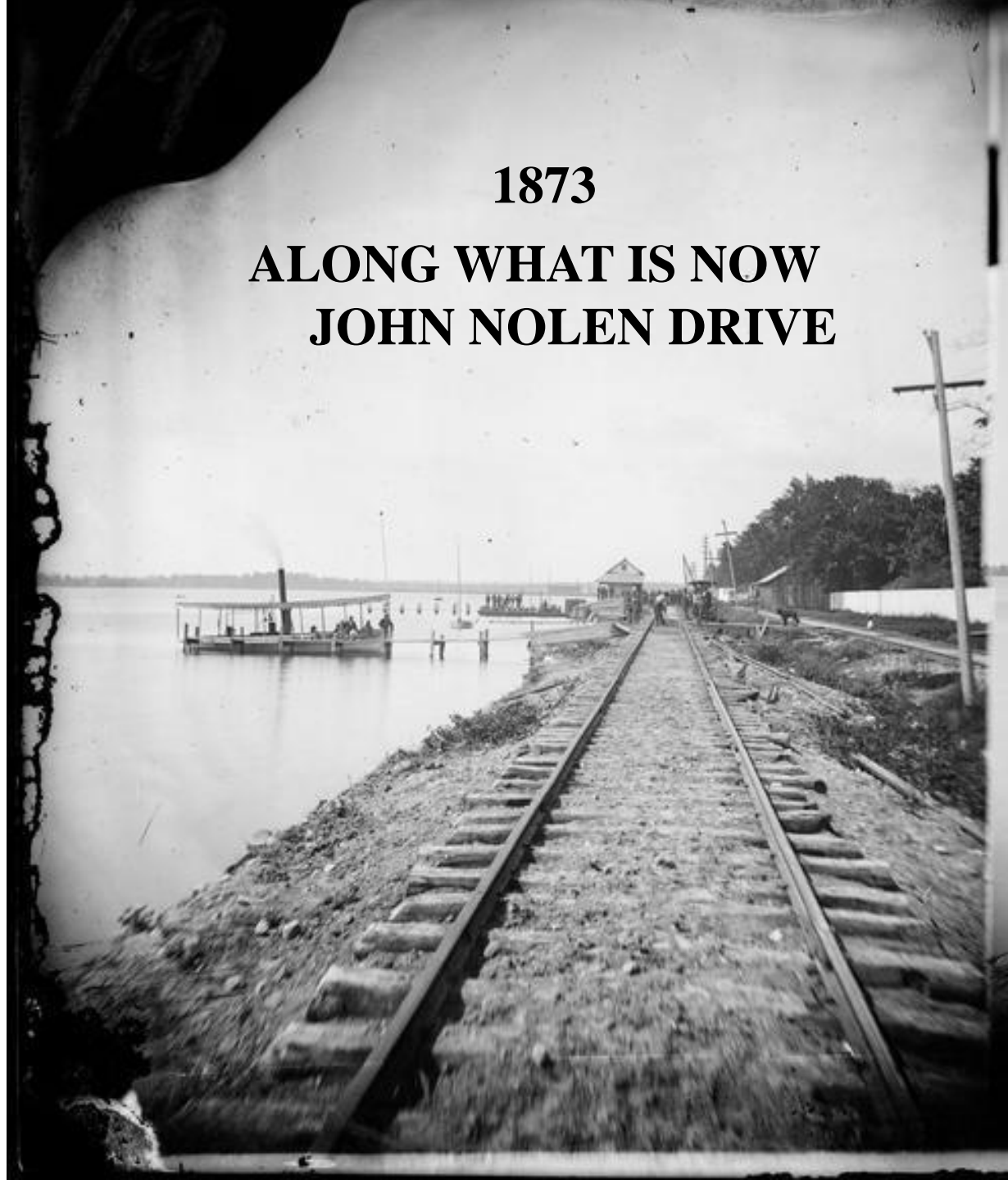
A. R. Lawrence Secretary.

J. C. Fairchild President.

Capital Stock, \$800,000. Shares, \$50 Each.

1873

**ALONG WHAT IS NOW
JOHN NOLEN DRIVE**

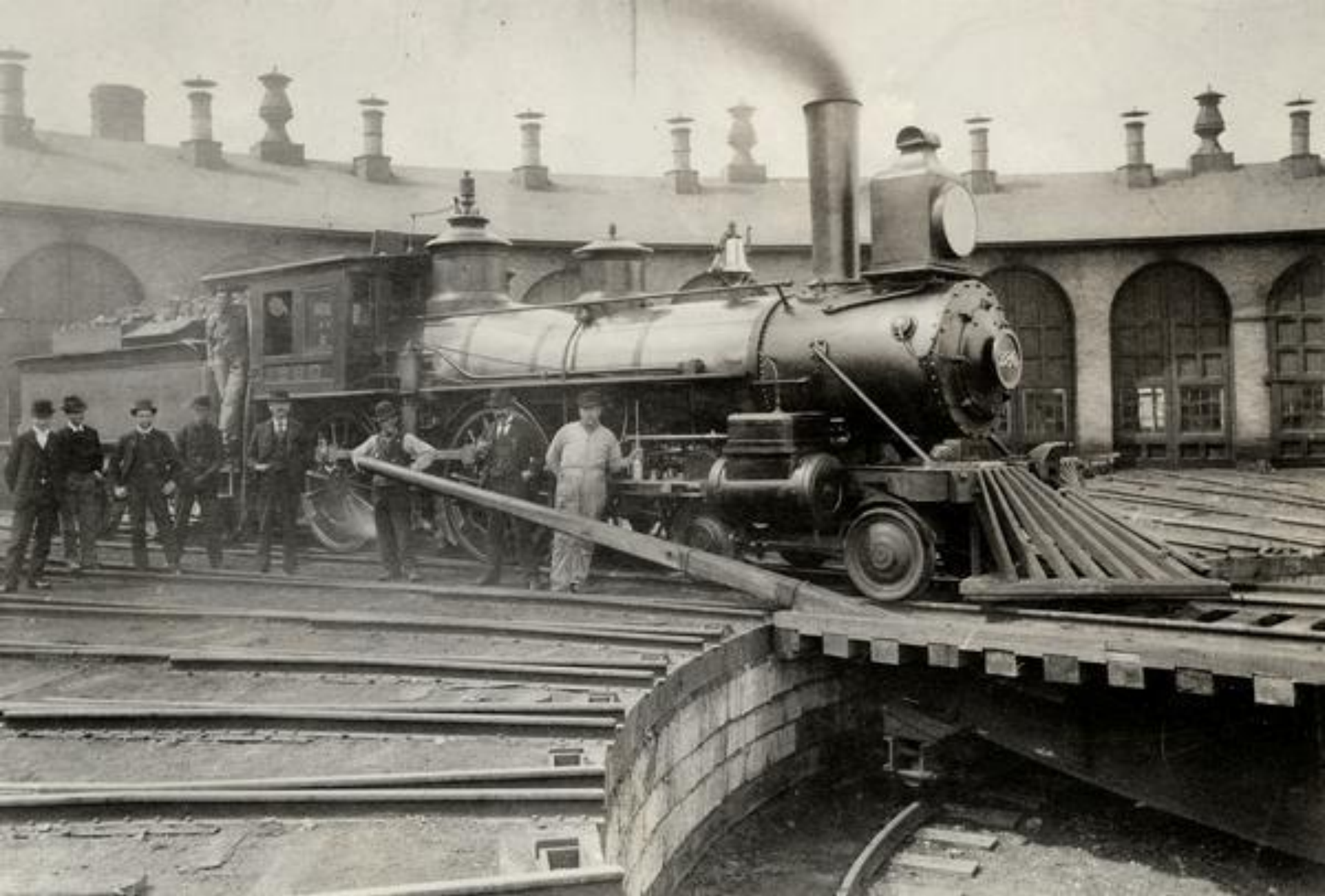




**ANGLEWORM STATION AT THE
END OF CARROLL STREET**



MADISON-PORTAGE LINE 1875



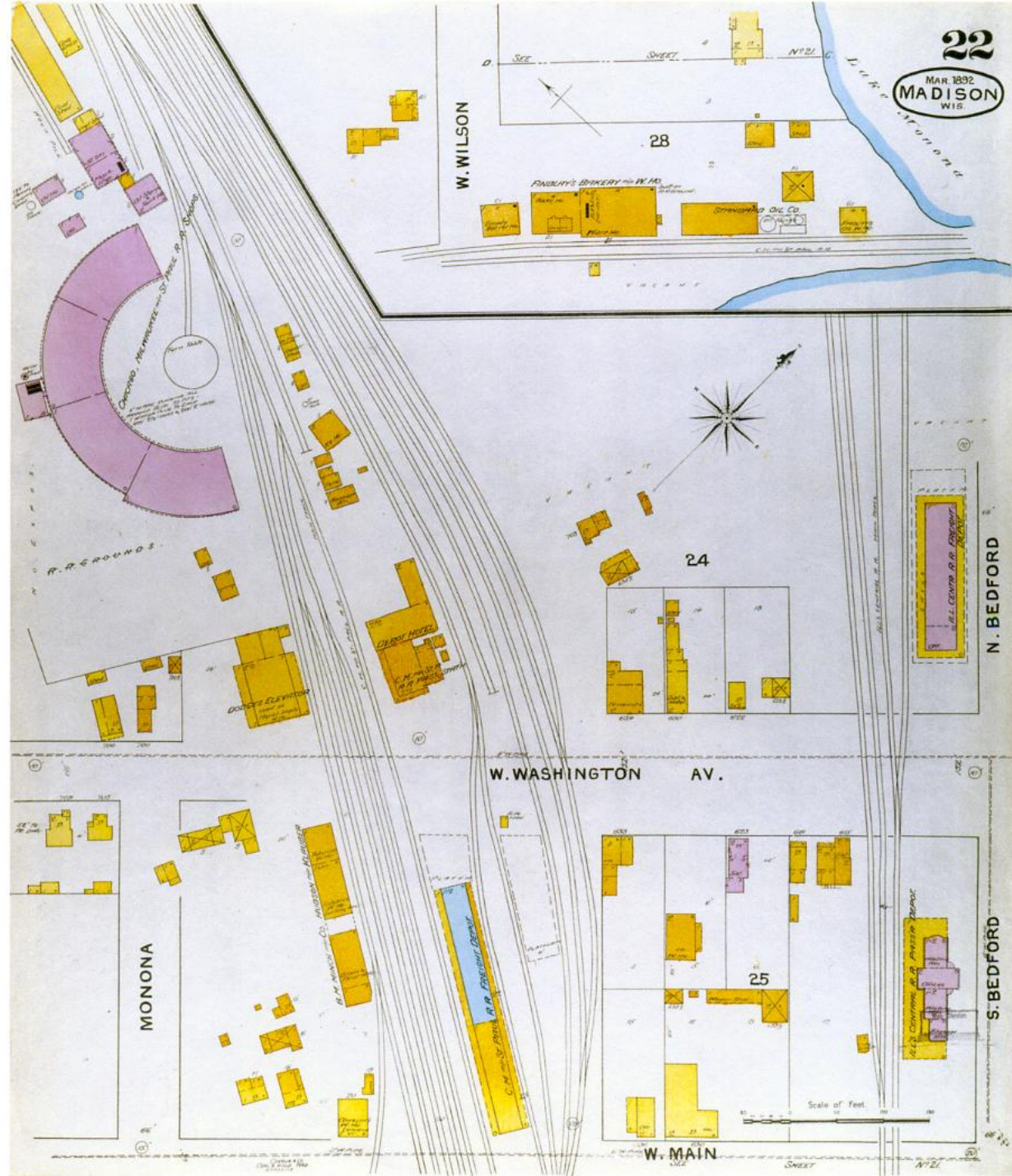
1896 MILWAUKEE ROAD ROUNDHOUSE

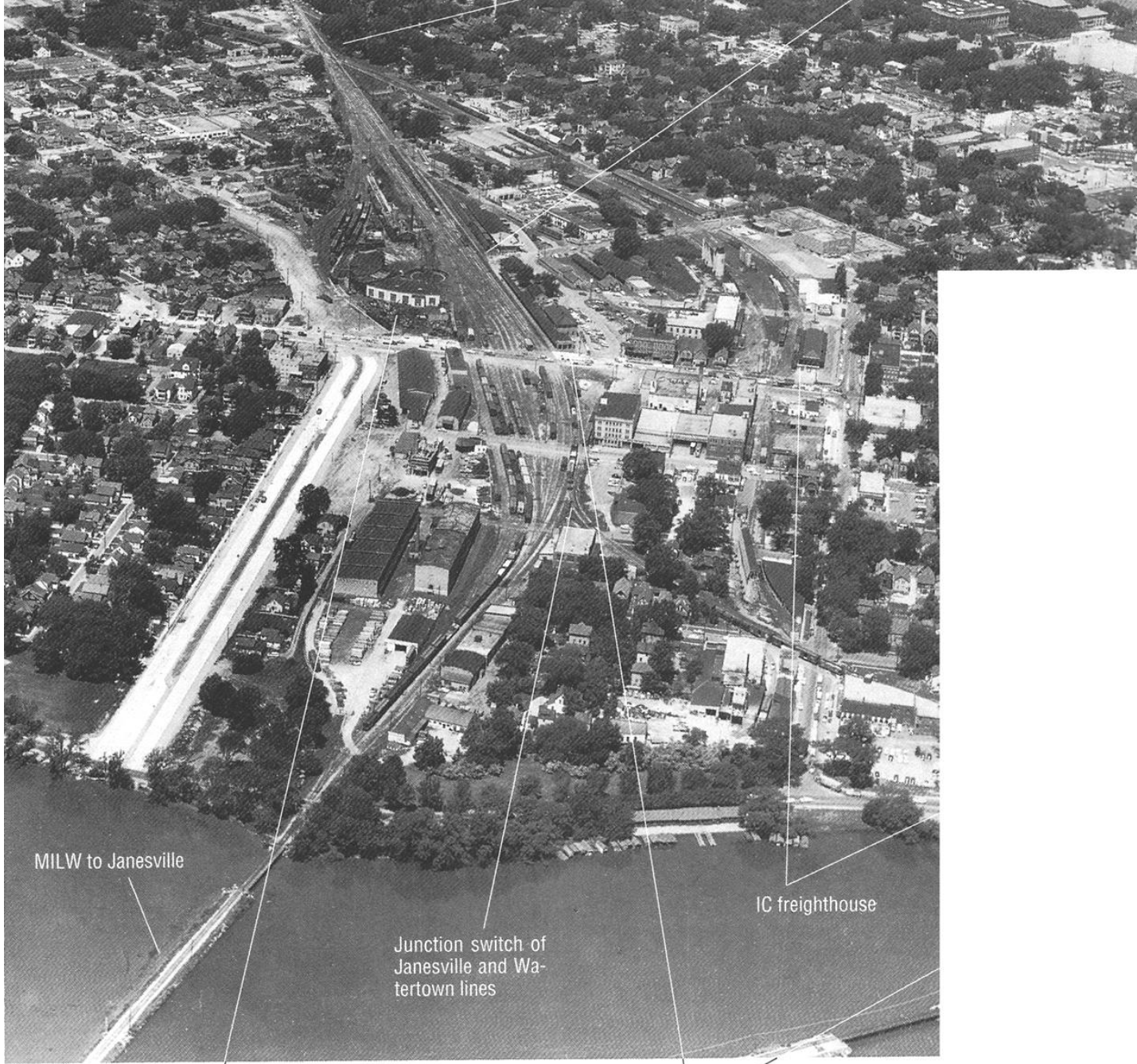


FREIGHT HOUSE 1915

SOUTH OF WEST WASHINGTON DEPOT

WEST WASHINGTON AVE. RAILROAD COMPLEX IN 1892





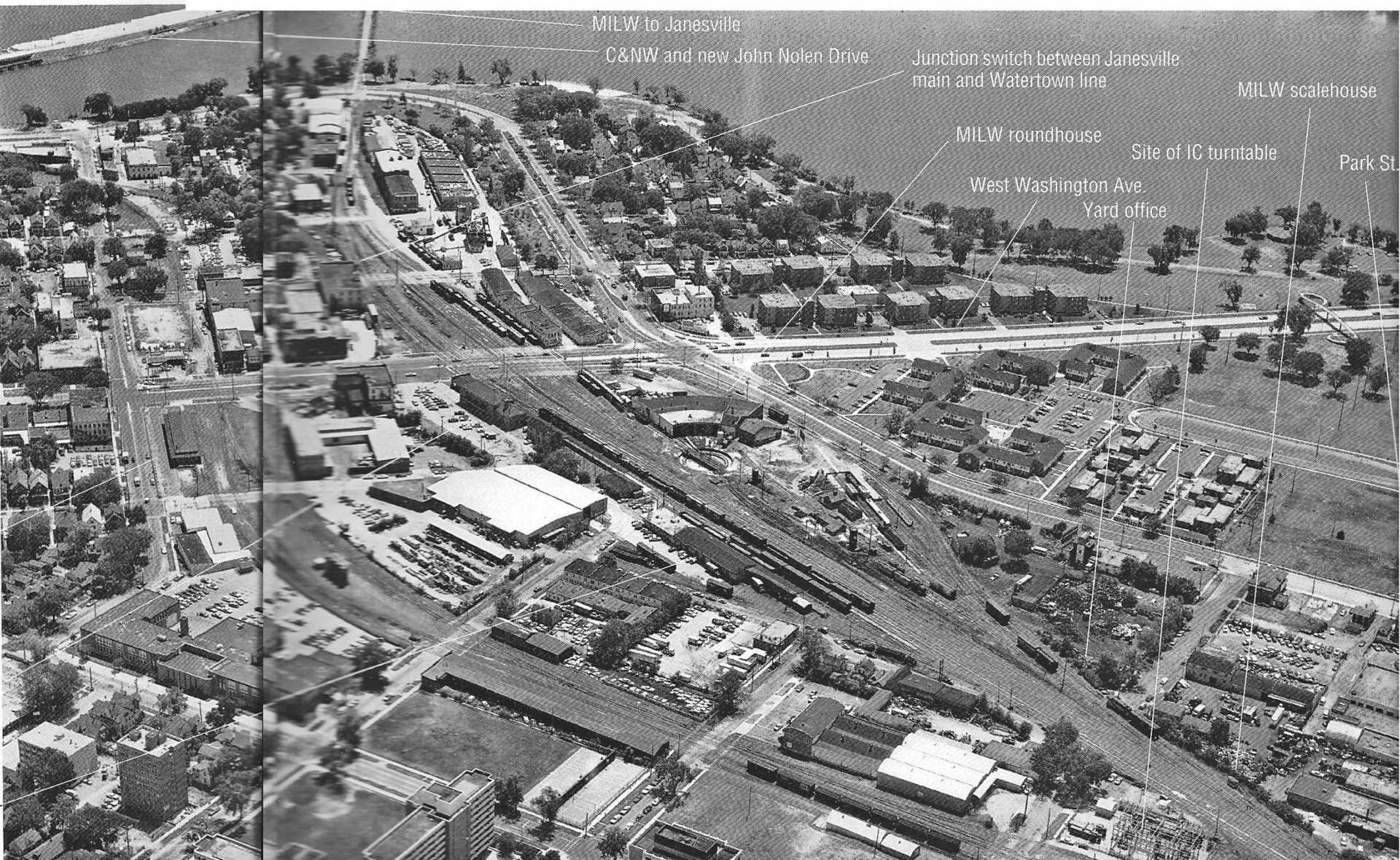
MILW to Janesville

MILW roundhouse

Junction switch of
Janesville and Wa-
tertown lines

IC freighthouse

MILW depot



MILW to Janesville

C&NW and new John Nolen Drive

Junction switch between Janesville main and Watertown line

MILW scalehouse

MILW roundhouse

Site of IC turntable

Park St.

West Washington Ave.
Yard office



MADISON

Scale: 0 5 1
Map: Matt Johnson, Mike Schaller



MIDDLETON
Depot

U.S. CITY 12-14

Brick Company UNIVERSITY OF WISCONSIN Lumber Company
University
University power plant

Mineral Point Road
County Highway S

Belt Line Rd.
U.S. 12-14

as a thing of the past, Atlantic No. 3 splices West
leaves Madison with eastbound train 28 for Mil-
waukee spring of 1949. William D. Middleton photo.

To Dodgeville
Verona Rd.
U.S. 18-151
IC to Belleville, Wis.
and Freeport, Ill.
C&W to Mt. Horeb and Lancaster

State Capitol
State
IC depot
W. Main
Wilson
C&NW passenger depot
Site of MILW
"East Madison"
(Franklin Street) station
MILW depot
Planing mill
MX tower
Gas company
Current site of Sheraton
Warehouse

Lake Monona
MONONA
Lake Wingra
Wingra Creek
Olin
PK

Belt Line Highway
U.S. 14
Broadway
To Milwaukee
U.S. 12-18
To Chicago
To Janesville
MILW to Milton Jct.,
Janesville and

U.S. 51
Stoughton Rd.
H.F. Kessenich Co.
Garver Supply Co.
Madison-Kipp Corp.
Junction "A"
Junction "B"
C&NW and MILW operated in streets
of Wilson and Railroad in this vicinity.
Due to congestion, these streets
are not shown at this point.

Commercial
Wis. 30
Payne & Dolan
Paper Recycling building
Midwest Steel
MILW to Sun Prairie
and Watertown
Forsberg Paper
Box Co.
Wolohan Lumber
East Washington
U.S. 151
To Stevens Point
To Fond du Lac

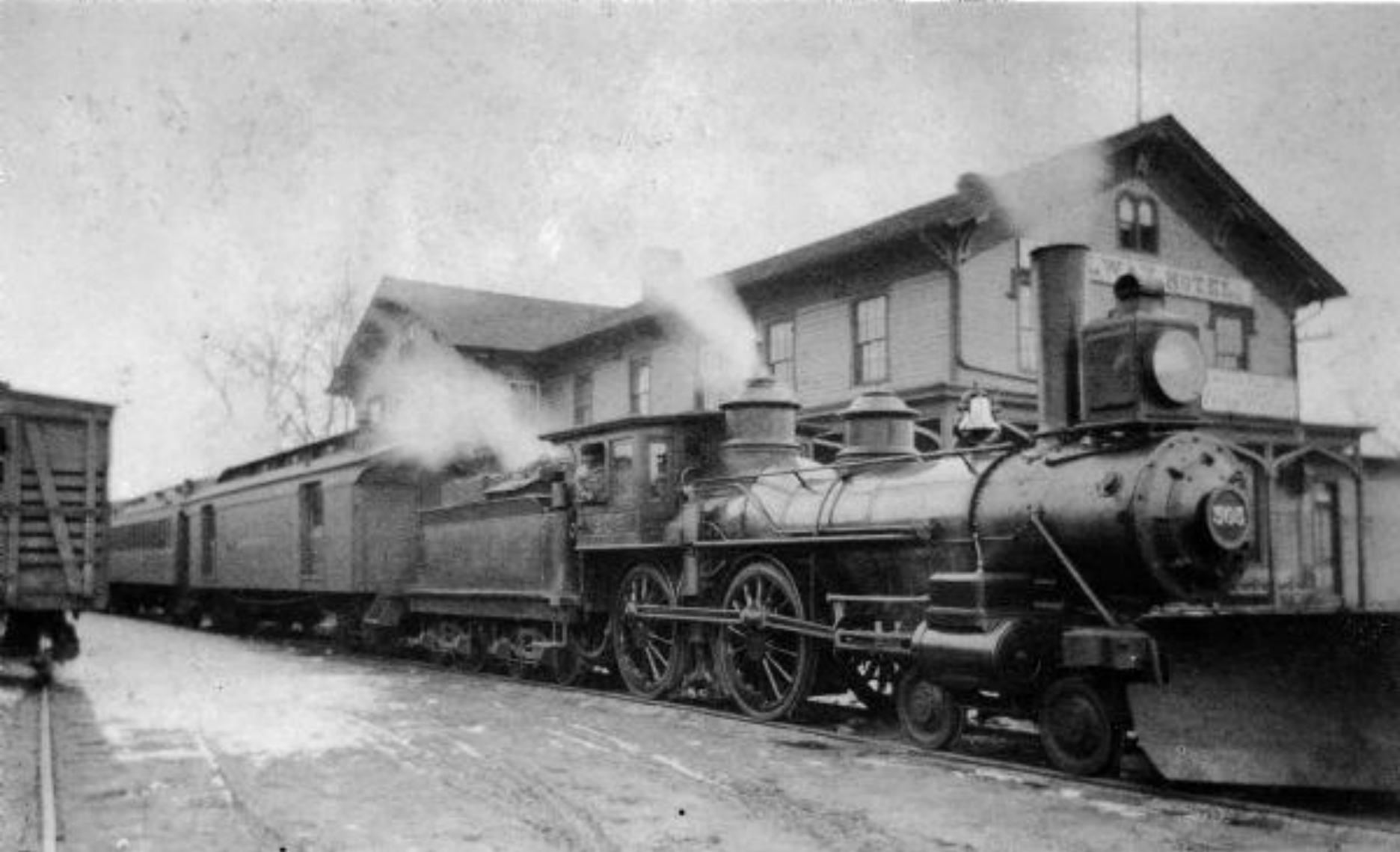
Industrial park
U.S. Army facility
Oscar Mayer complex
Packers Ave.
Aberg
Saed company
C&NW to Baraboo
and Wyeville
Hwy 113
To Baraboo
MILW to Poynette and
Portage
East Washington
U.S. 51







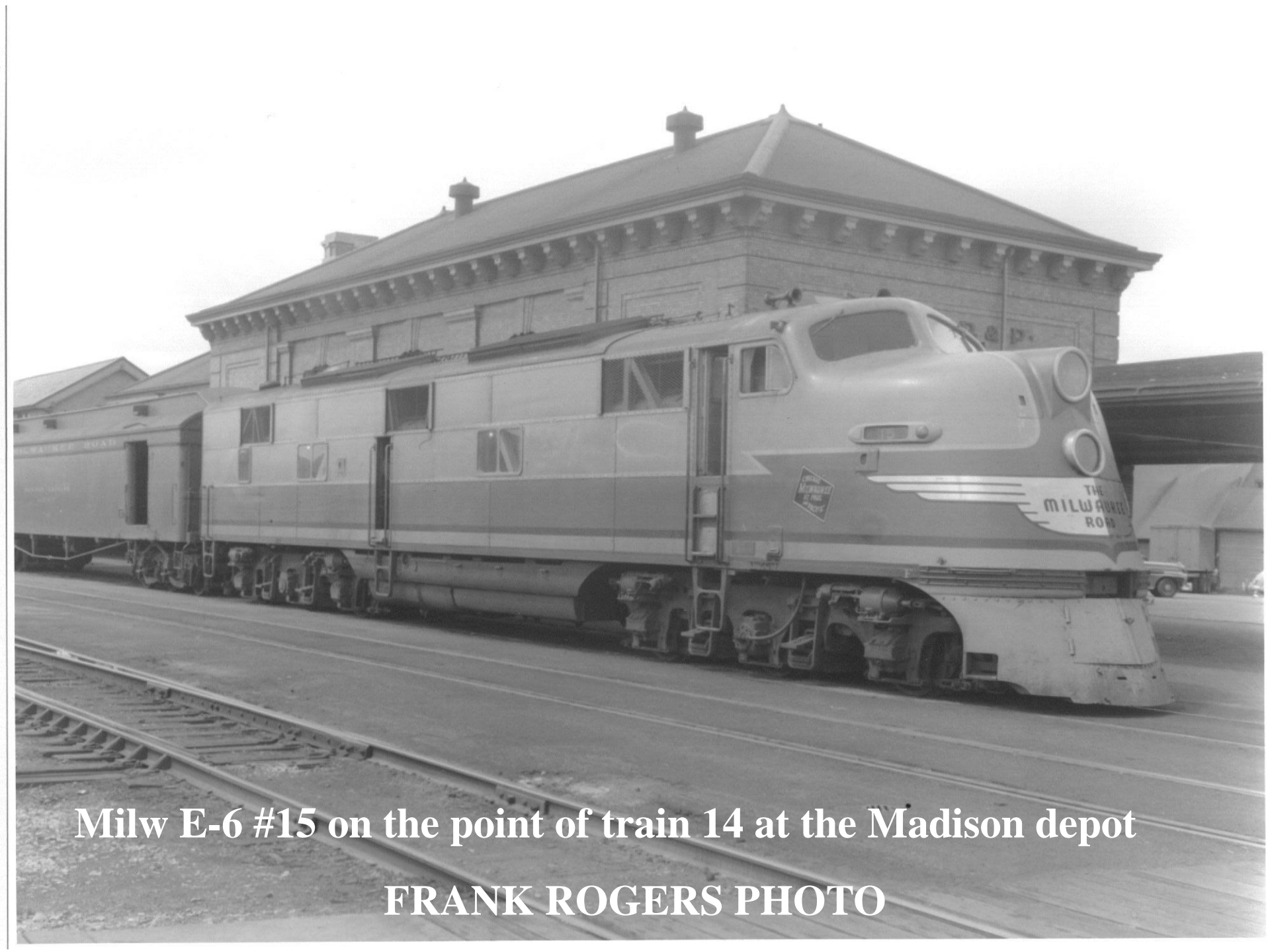
FIRST WEST WASHINGTON AVE. DEPOT & HOTEL



1914

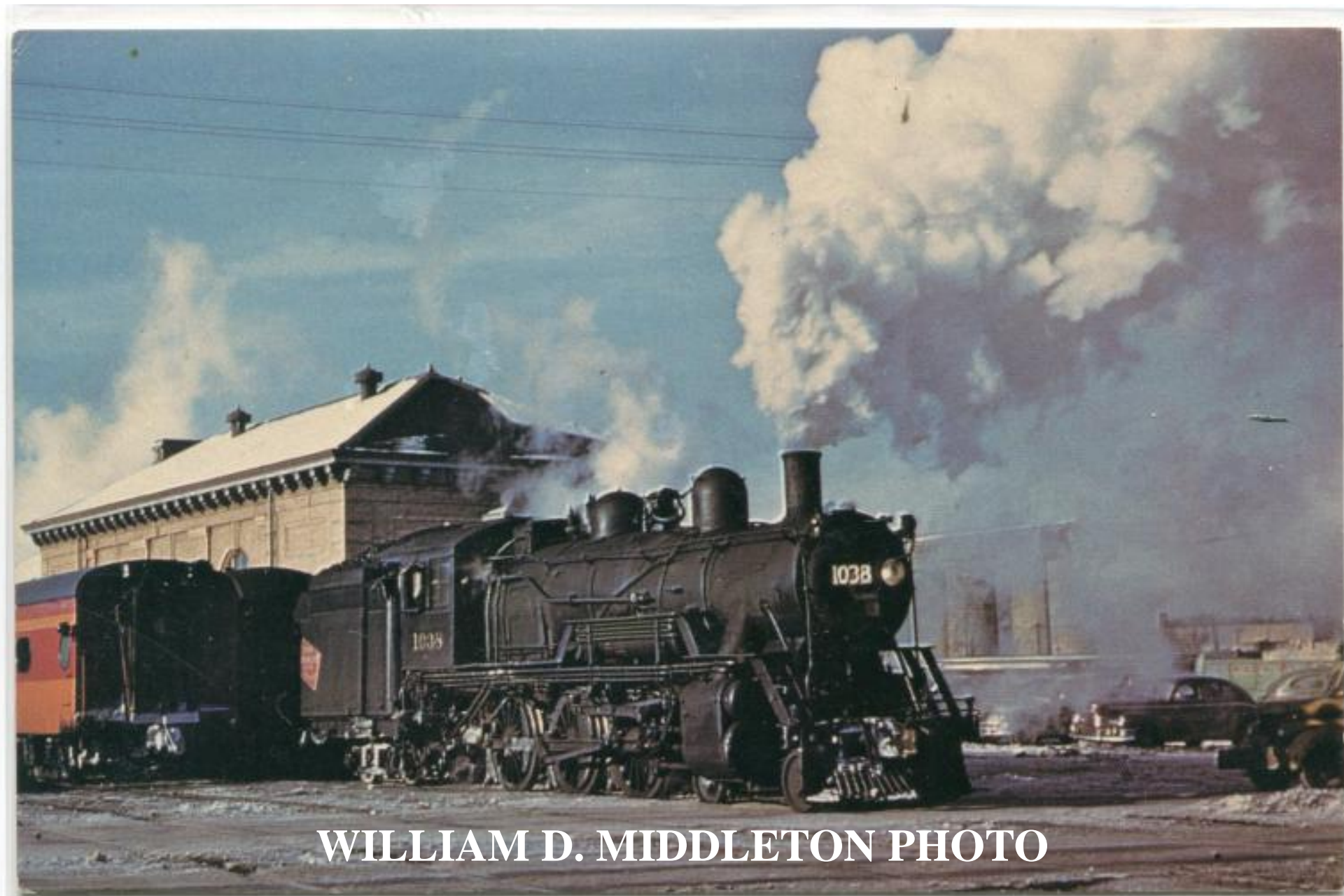






Milw E-6 #15 on the point of train 14 at the Madison depot

FRANK ROGERS PHOTO



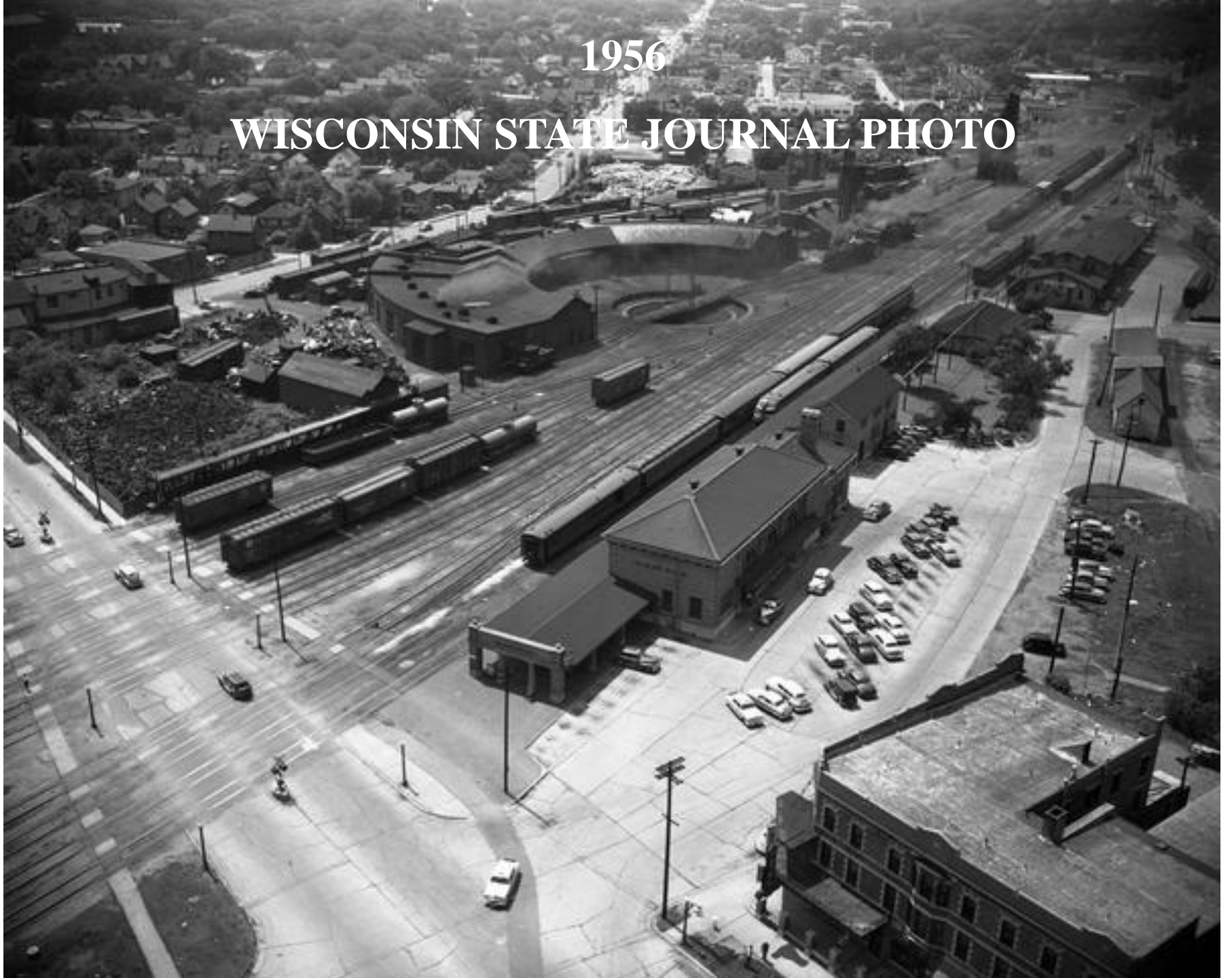
WILLIAM D. MIDDLETON PHOTO

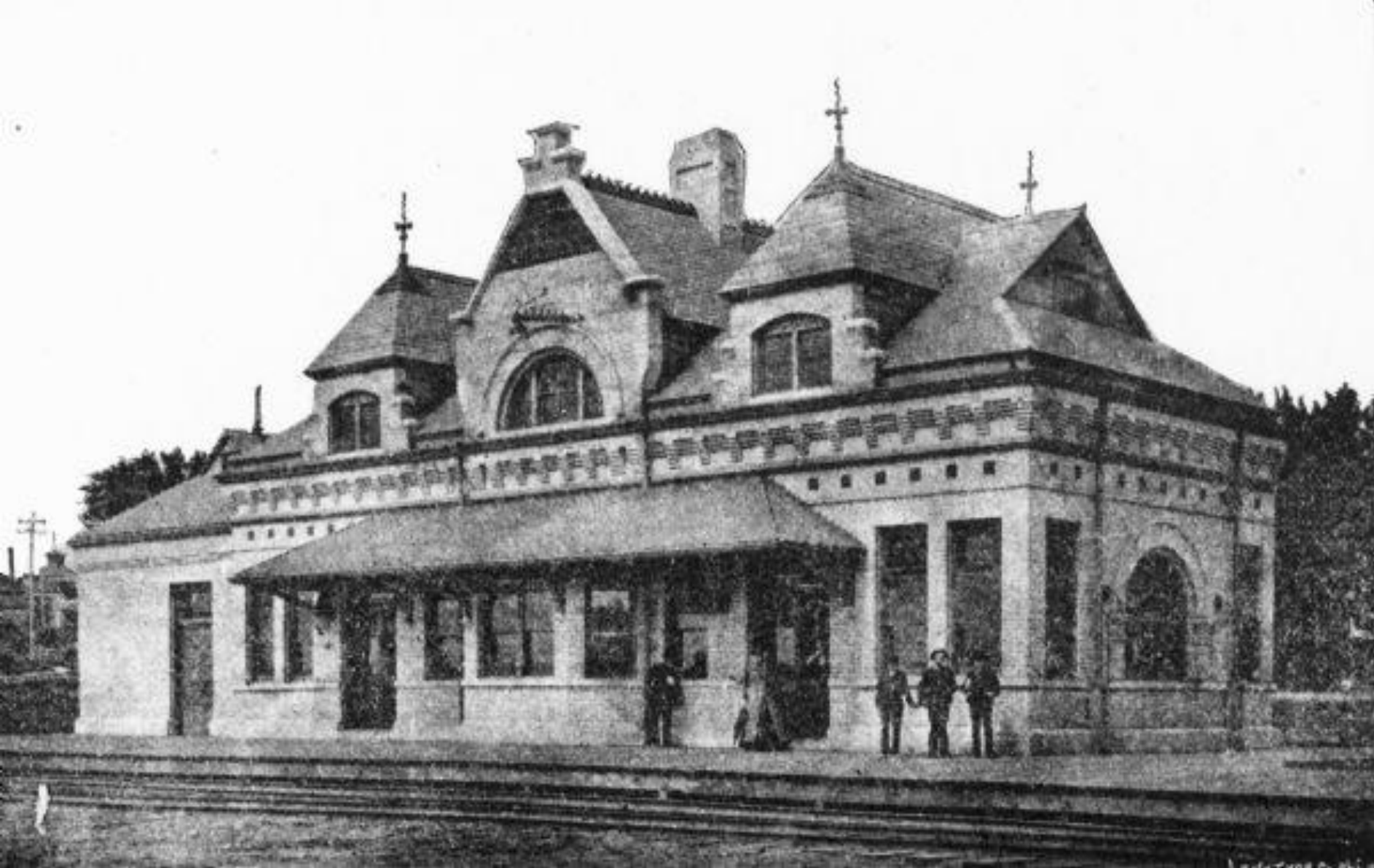


WILLIAM D. MIDDLETON PHOTO

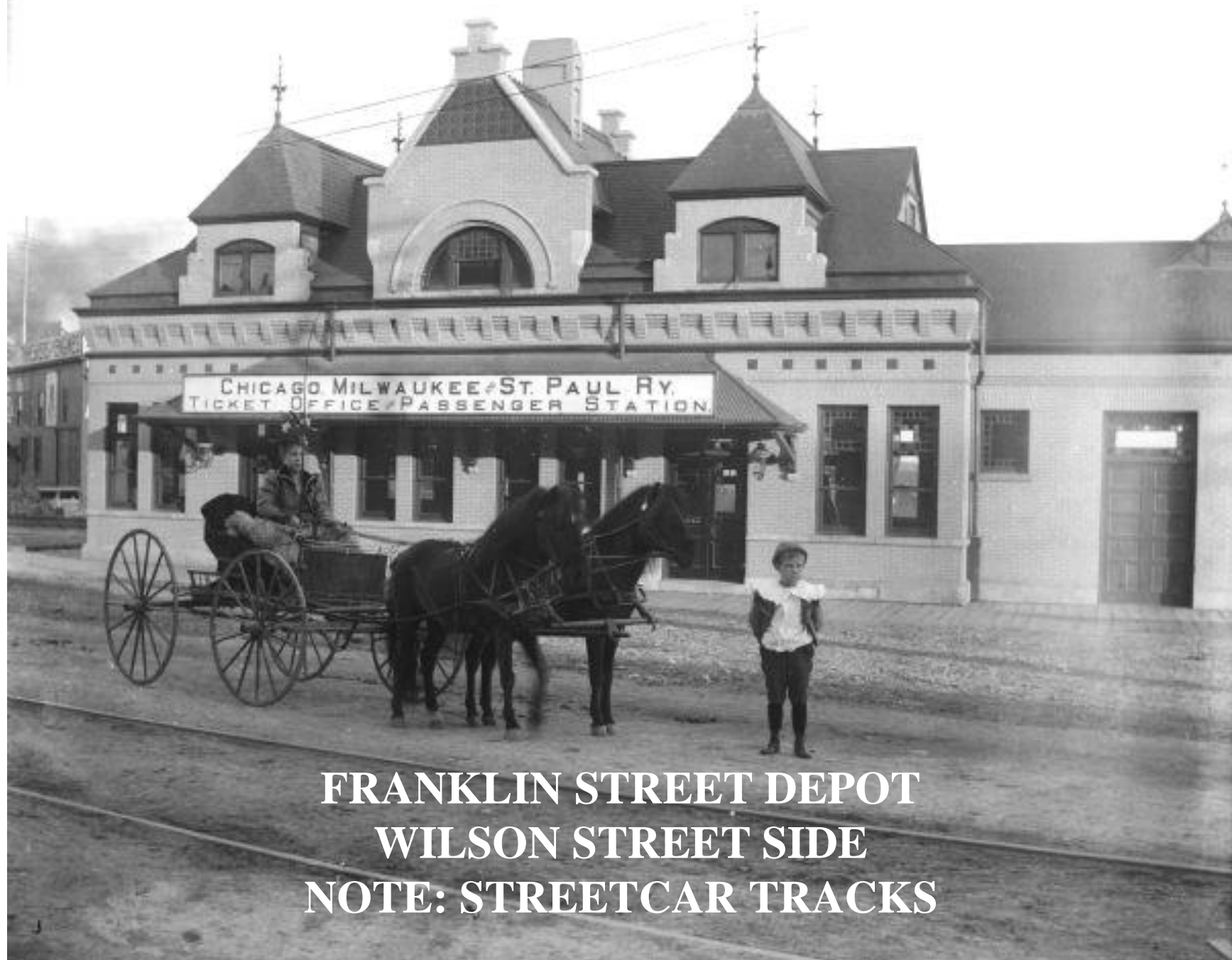
1956

WISCONSIN STATE JOURNAL PHOTO





FRANKLIN STREET DEPOT IN 1889



**FRANKLIN STREET DEPOT
WILSON STREET SIDE
NOTE: STREETCAR TRACKS**



FRANKLIN ST.
DEPOT

WEST
WILSON ST.
1946

PHOTO COPY
SERVICE
A-1295

1880
C&NW MADISON
DEPOT



1909



CHICAGO & NORTH-WESTERN RY.
PASSENGER STATION.

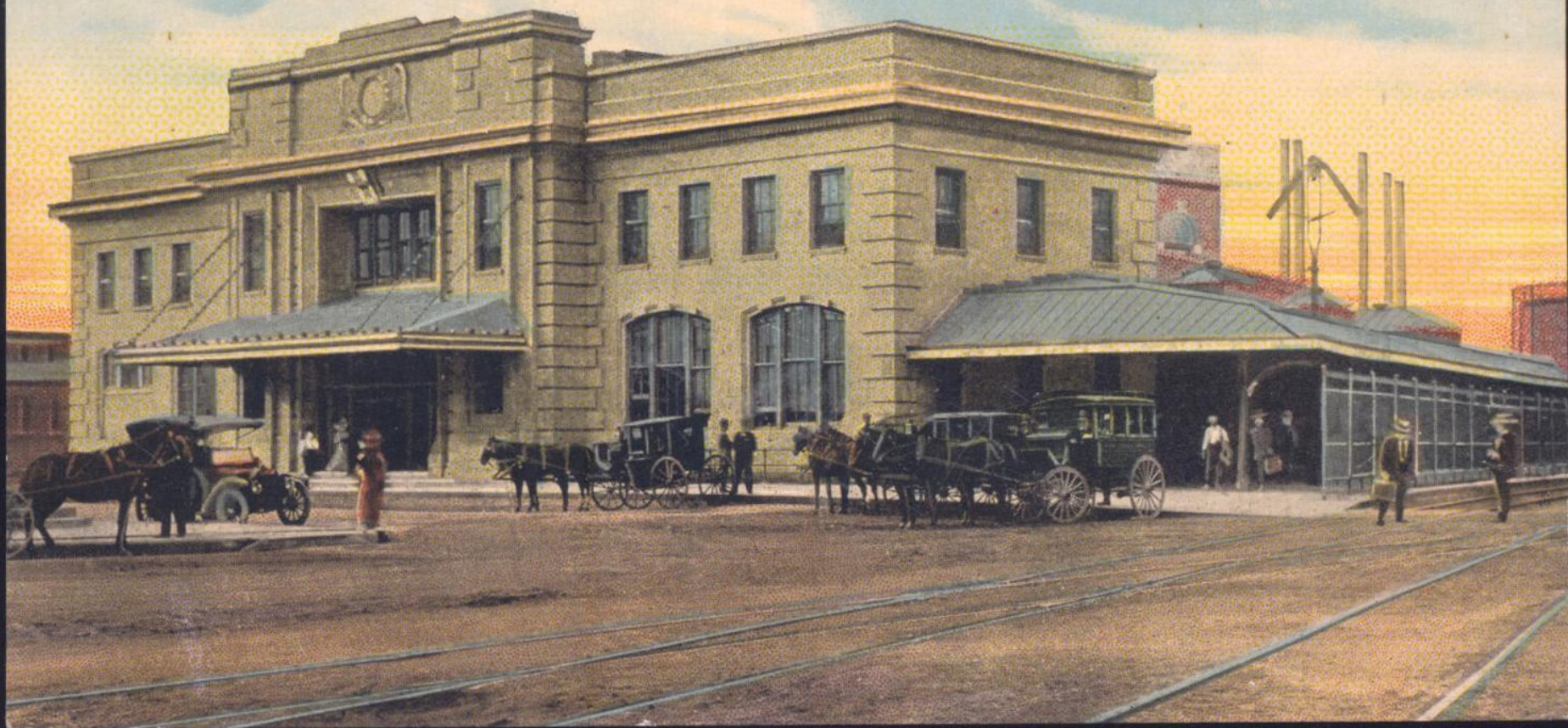
MADISON

NADEAU



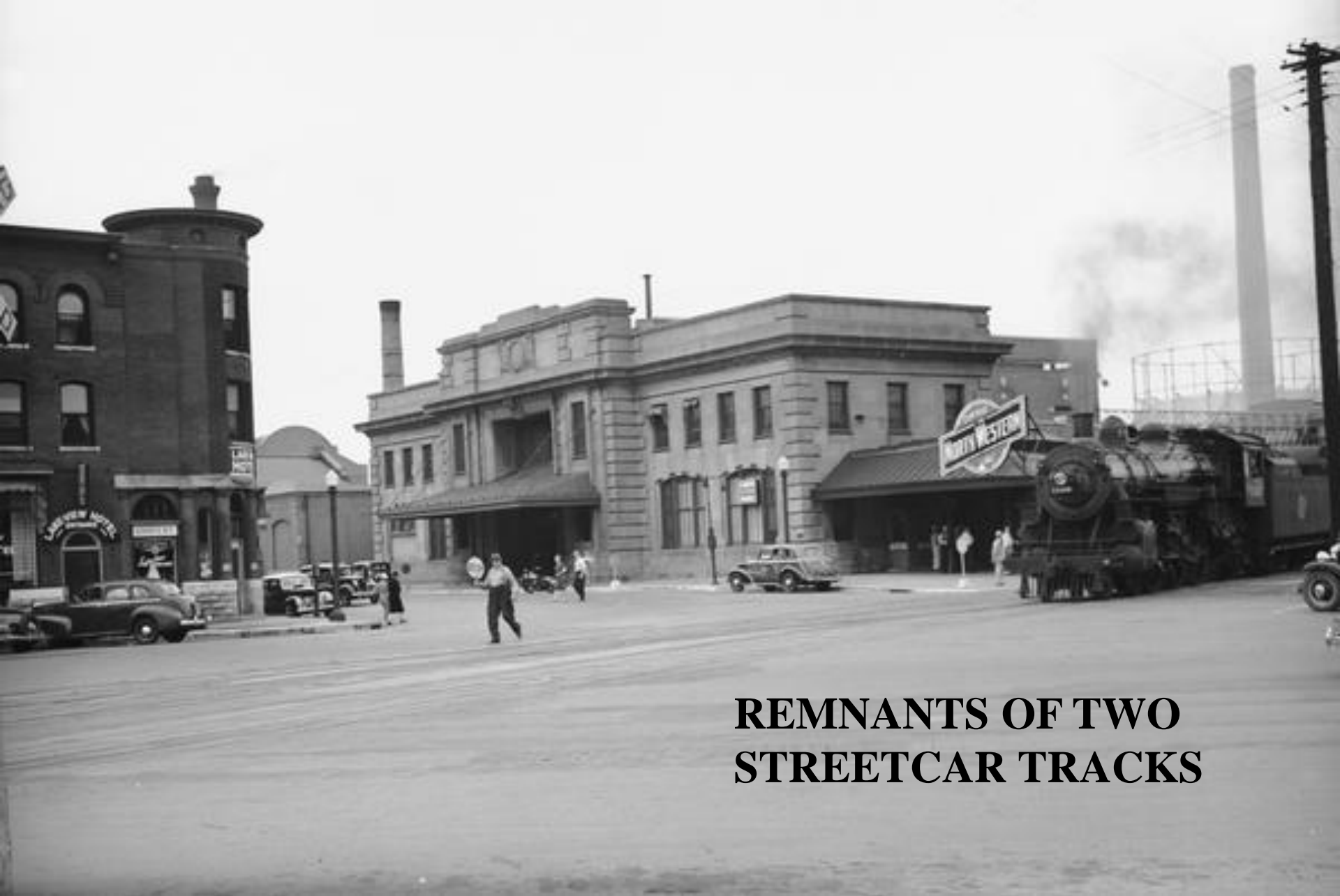
1913

A630. C. & N. W. Station, Madison, Wis.



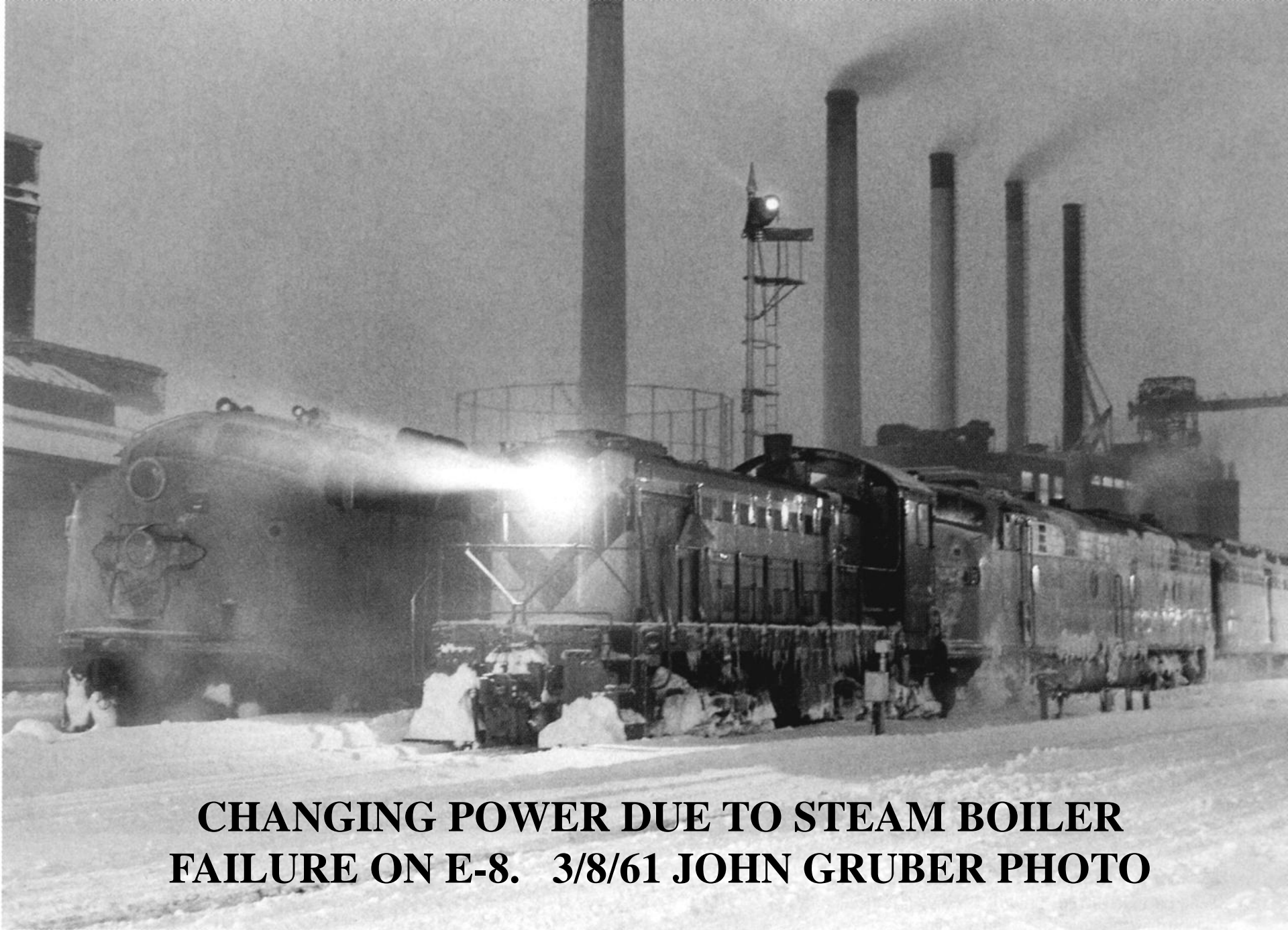


1918
POSSIBLY SENDING OFF OR
WELCOMING BACK WW I SOLDIERS



**REMNANTS OF TWO
STREETCAR TRACKS**

1940



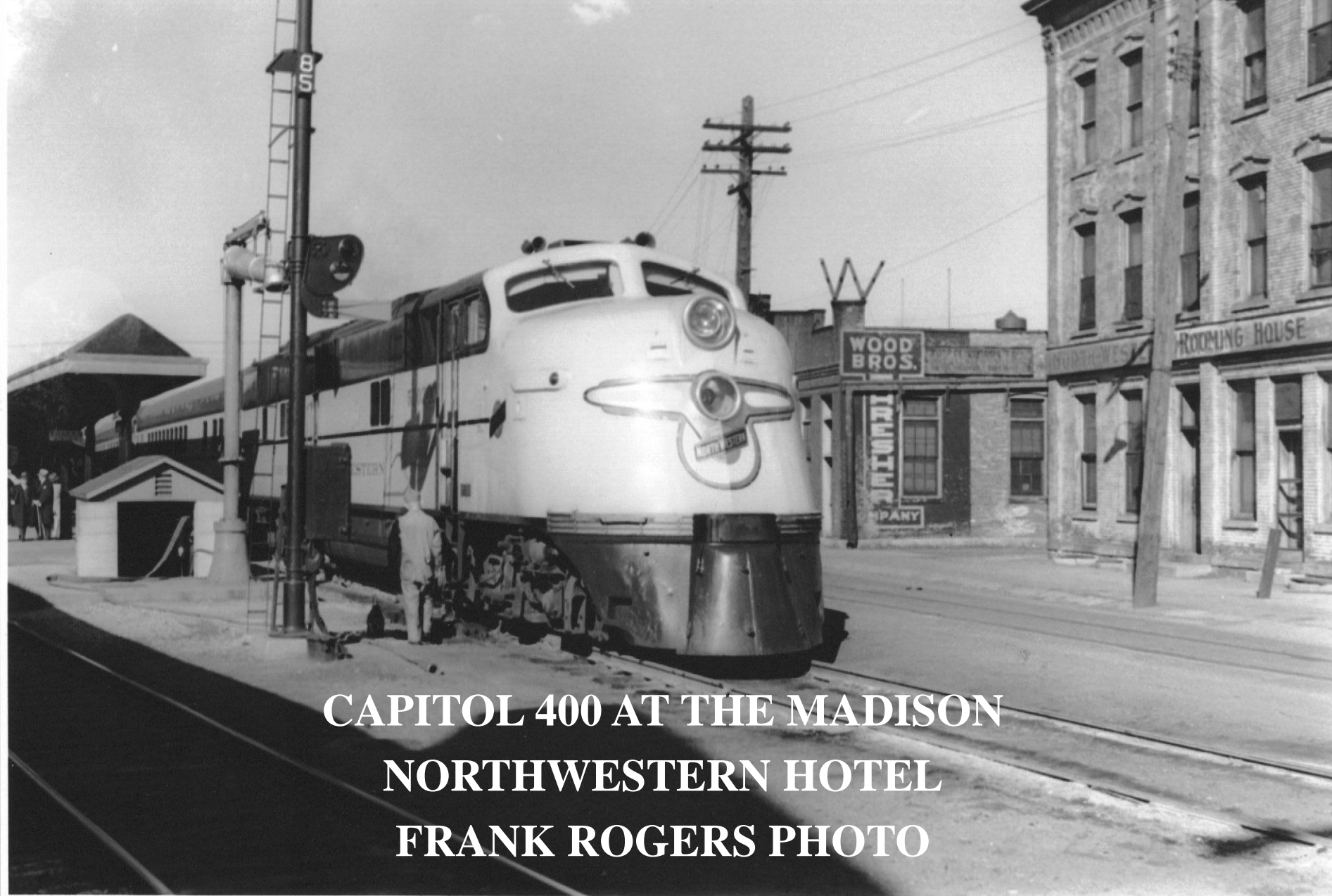
**CHANGING POWER DUE TO STEAM BOILER
FAILURE ON E-8. 3/8/61 JOHN GRUBER PHOTO**



**RETURNING FROM A
MILWAUKEE – BARABOO EXCURSION CIRCA 1960
RAY WUNDROCK SLIDE**



1913



**CAPITOL 400 AT THE MADISON
NORTHWESTERN HOTEL
FRANK ROGERS PHOTO**



1936

WYKAM
PHOTO
10-5627 B

1939



777 CIVIC
PHOTO
10-6411-0

1945





1925

**W. LAKESIDE ST.
CROSSING C&NW
TRACKS**



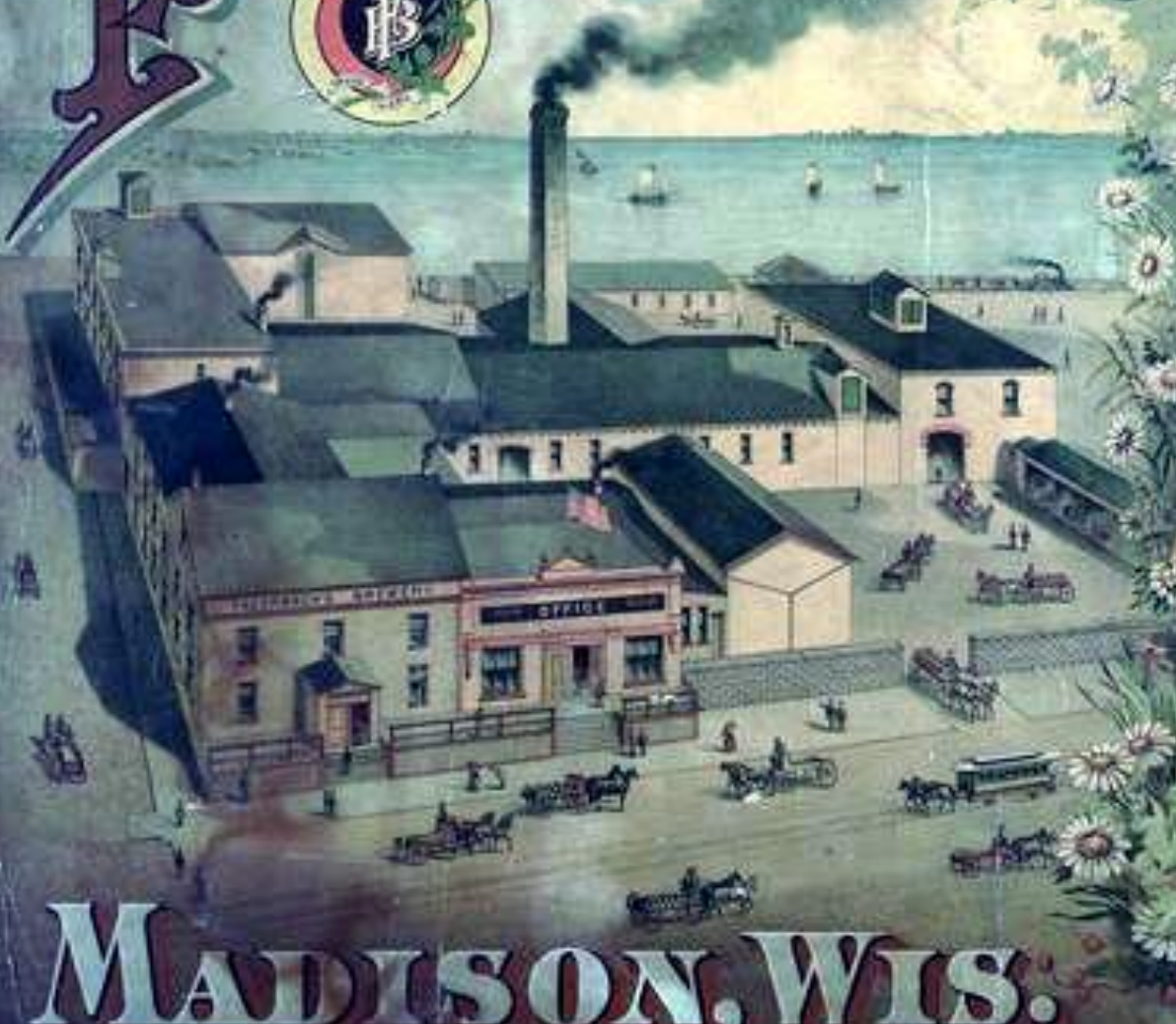
1923



1935

ILLINOIS CENTRAL DEPOT
SOUTH OF W. WASHINGTON ST.
USED AS A TAXI DEPOT

FAUERBACH'S BREWERY.



MADISON, WIS.



BEHIND MACHINERY ROW BUILDING



1937

MEVICAR
PHOTO

1932

**ENGINE USED AS STATIONARY
STEAM BOILER AT BREWERY**



Engine used in emergency at Tupper Lake
Brewery, while boiler was being repaired.

A.H.
P. 118

www.wisconsinhistory.org



CVICAR
PHOTO
10-5793-B

MACHINERY ROW BUILDING

DEPOT

W. VICAR
PHOTO
10-11745



1946 DESOTOS



1937

LOCATED NORTH OF
OSCAR MEYER COMPLEX



SAND & GRAVEL
C.E. & P.A. ROTH, INC.

BETTER
COAL

LATHLEIGH
COAL

BURN
NOS
COAL

ST. DAVID
COAL

ORIENT
COAL

MAIUEGAN
COKE

United
Briquets

ORIGINAL
MONTAS
America's
Favorite
Old Fuel
LESS

FAMOUS
READING
ANTHRACITE

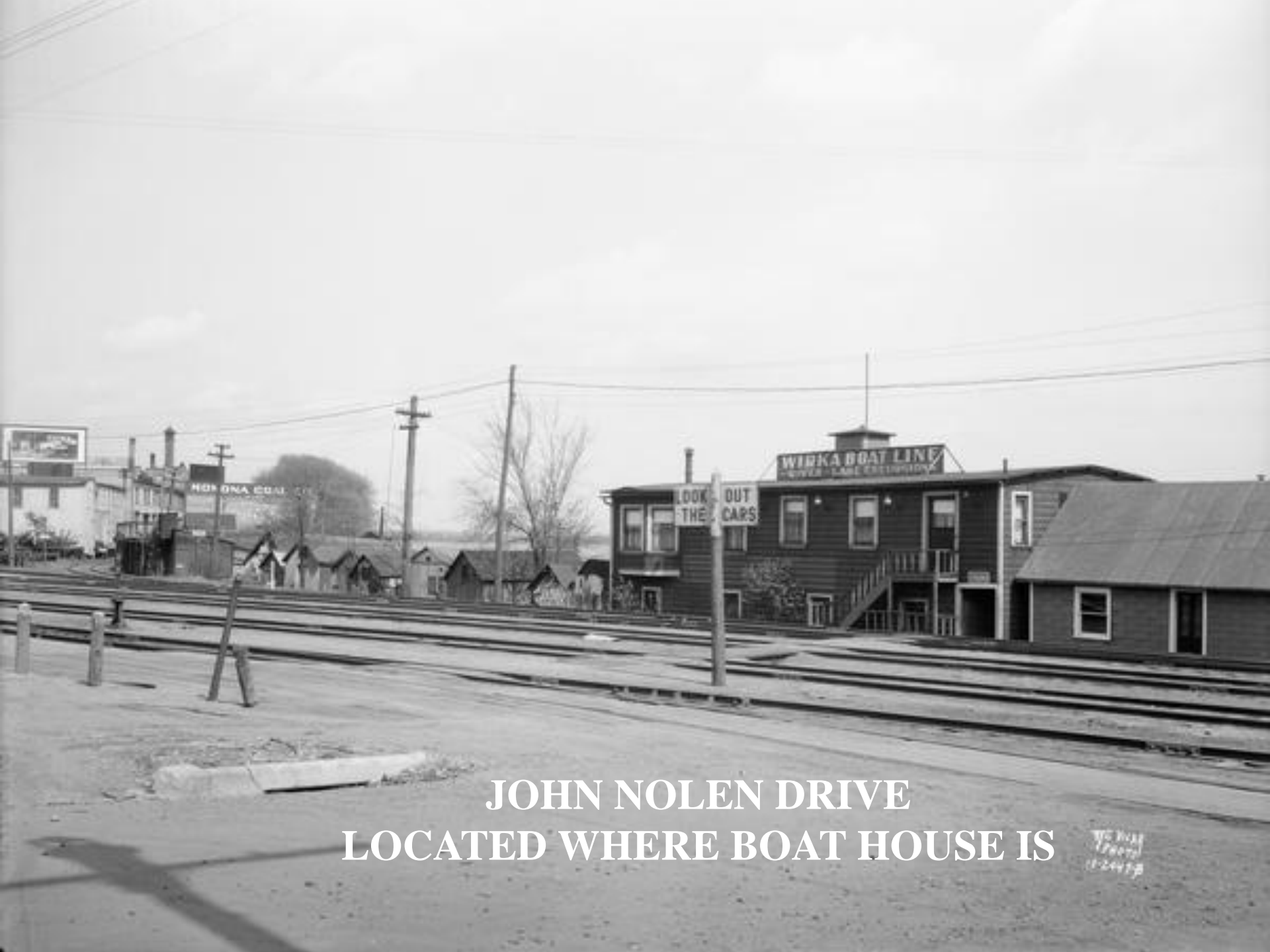
CVICAR
PHOTO
10-6098-B



CASTLE
& DOYLE

CASTLE & DOYLE
Quality
READY-MIXED
CONCRETE

WEVICAR
PHOTO
10-6031-B



JOHN NOLEN DRIVE
LOCATED WHERE BOAT HOUSE IS

W.C. Hill
17007
11-24-79



W. B. Warner
143

FLAT RATE CAB

25c One Person
5c Each Extra Person
Any Part of City

CHECKER
CAB
CO.

W. B. Warner
PHOTO
10-5092-B



1942

OSCAR MEYER COMPLEX



1944

1909

FAIR OAKS AVE.

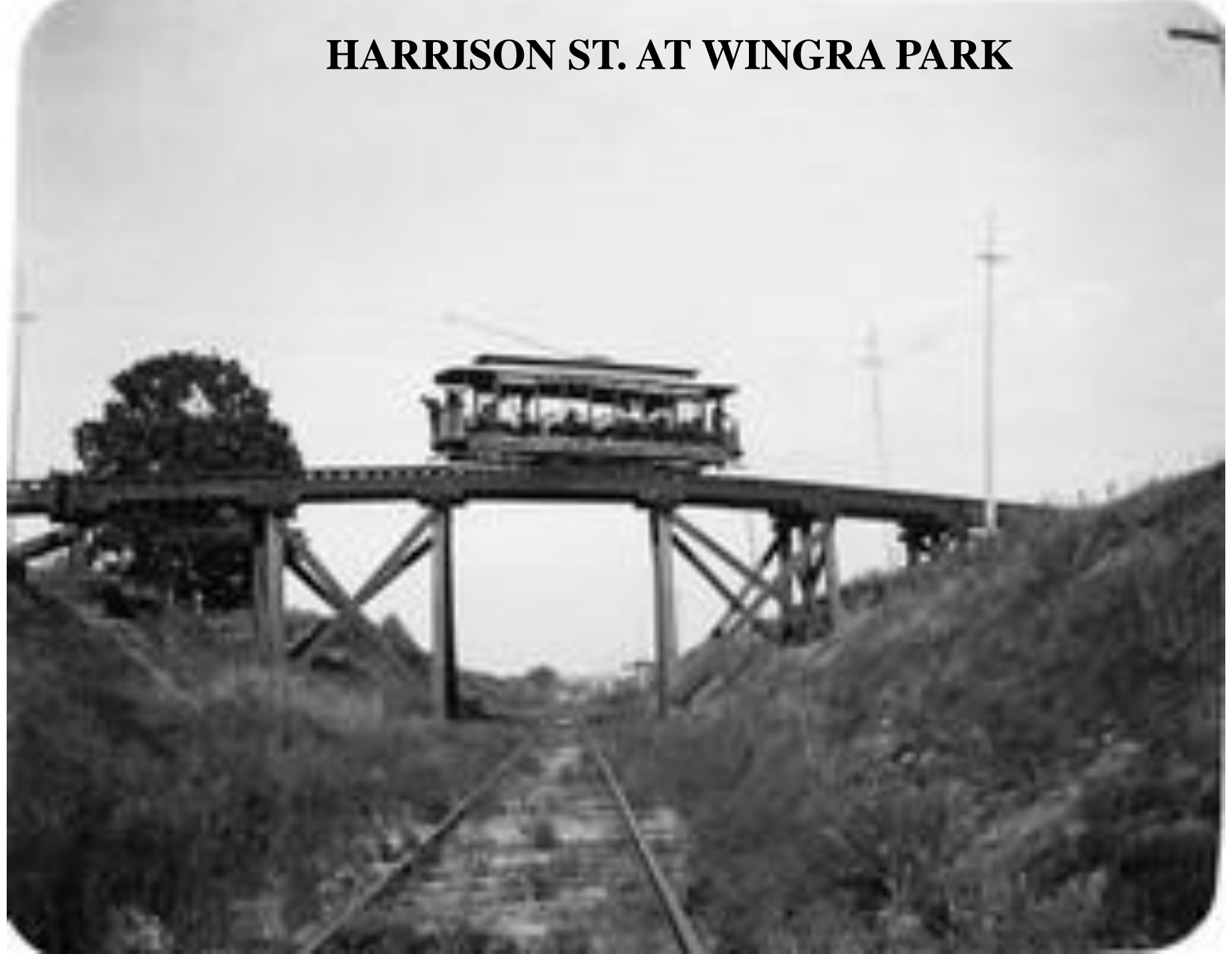




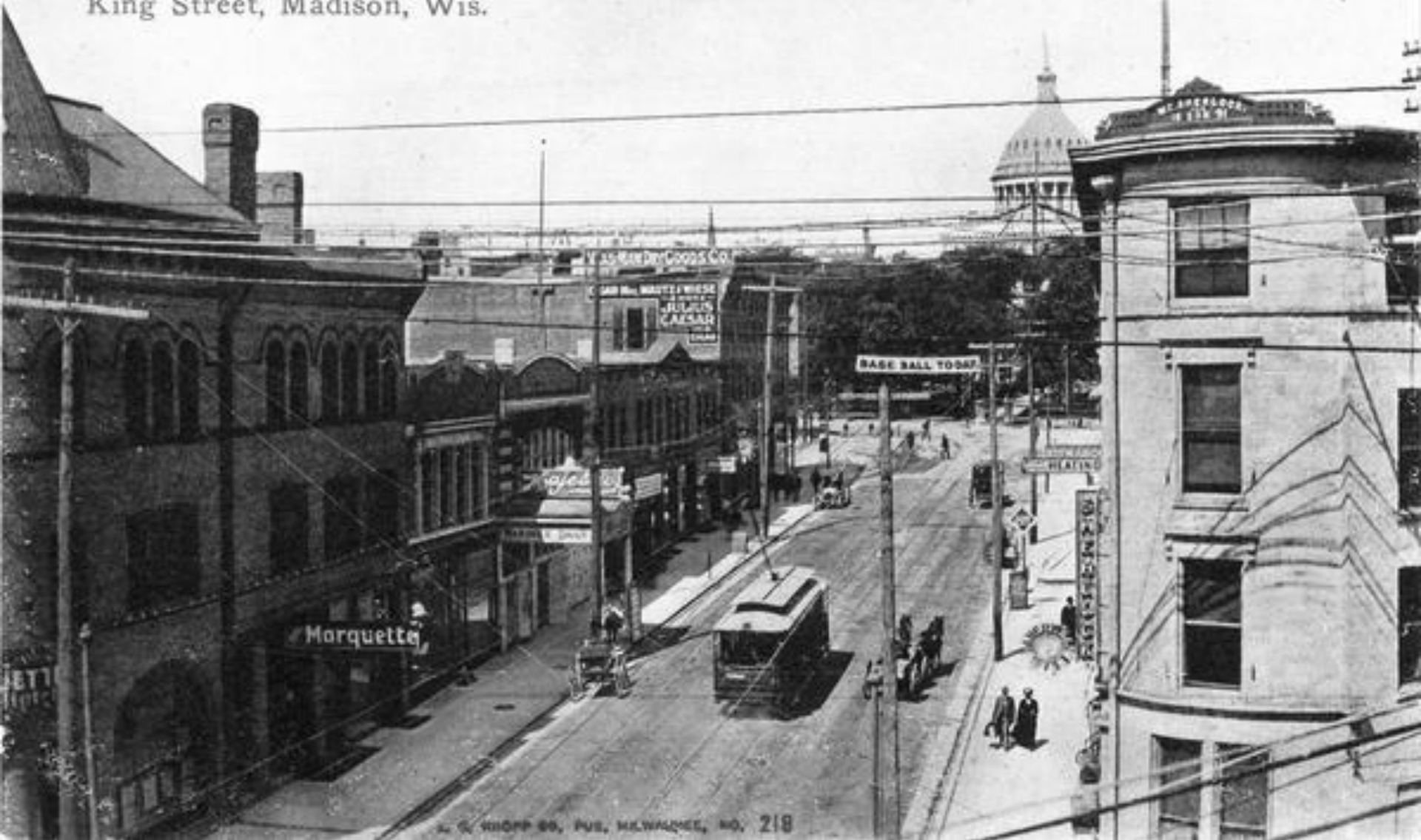


1910

HARRISON ST. AT WINGRA PARK

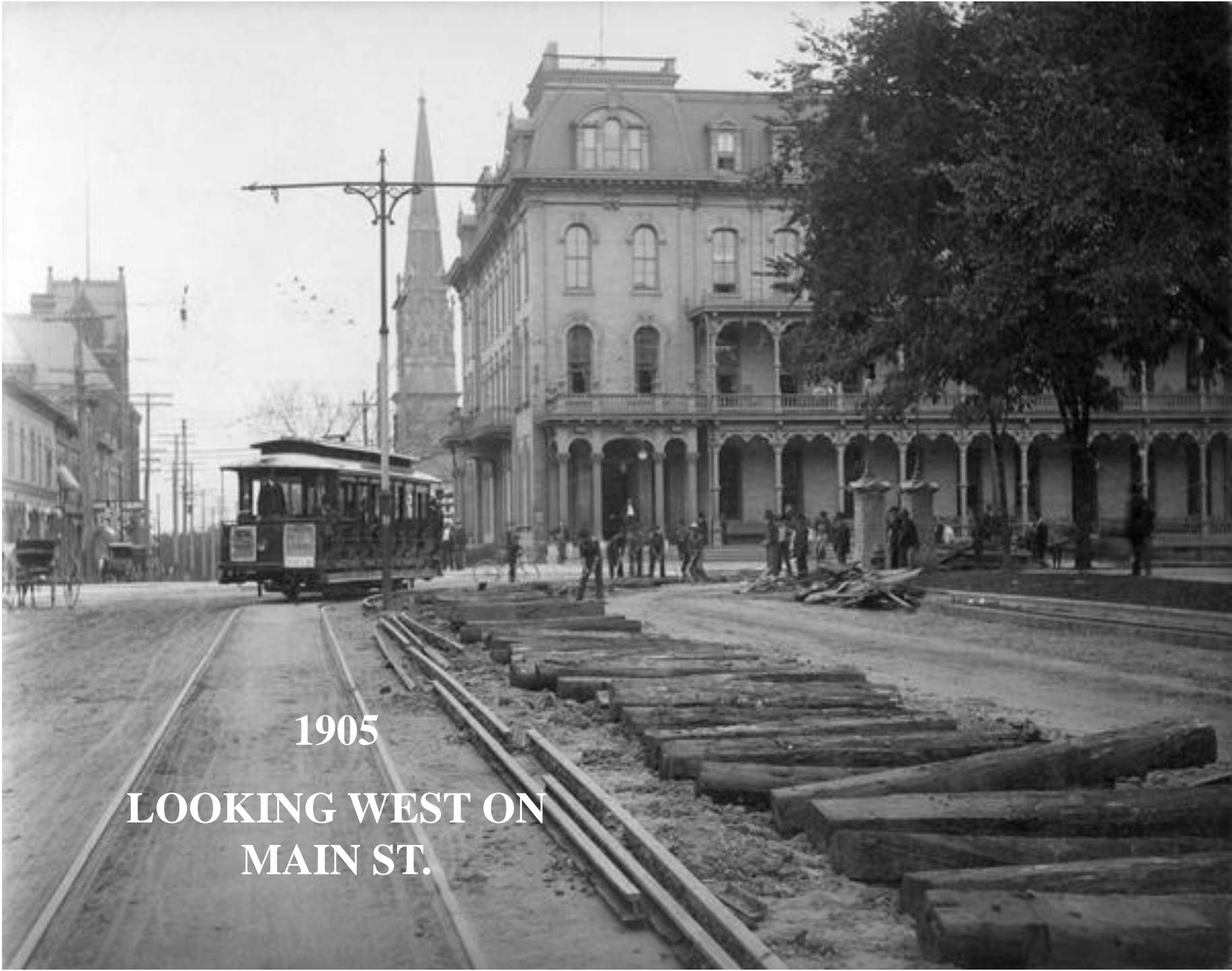


King Street, Madison, Wis.



A617. King Street, looking East, Madison, Wis.

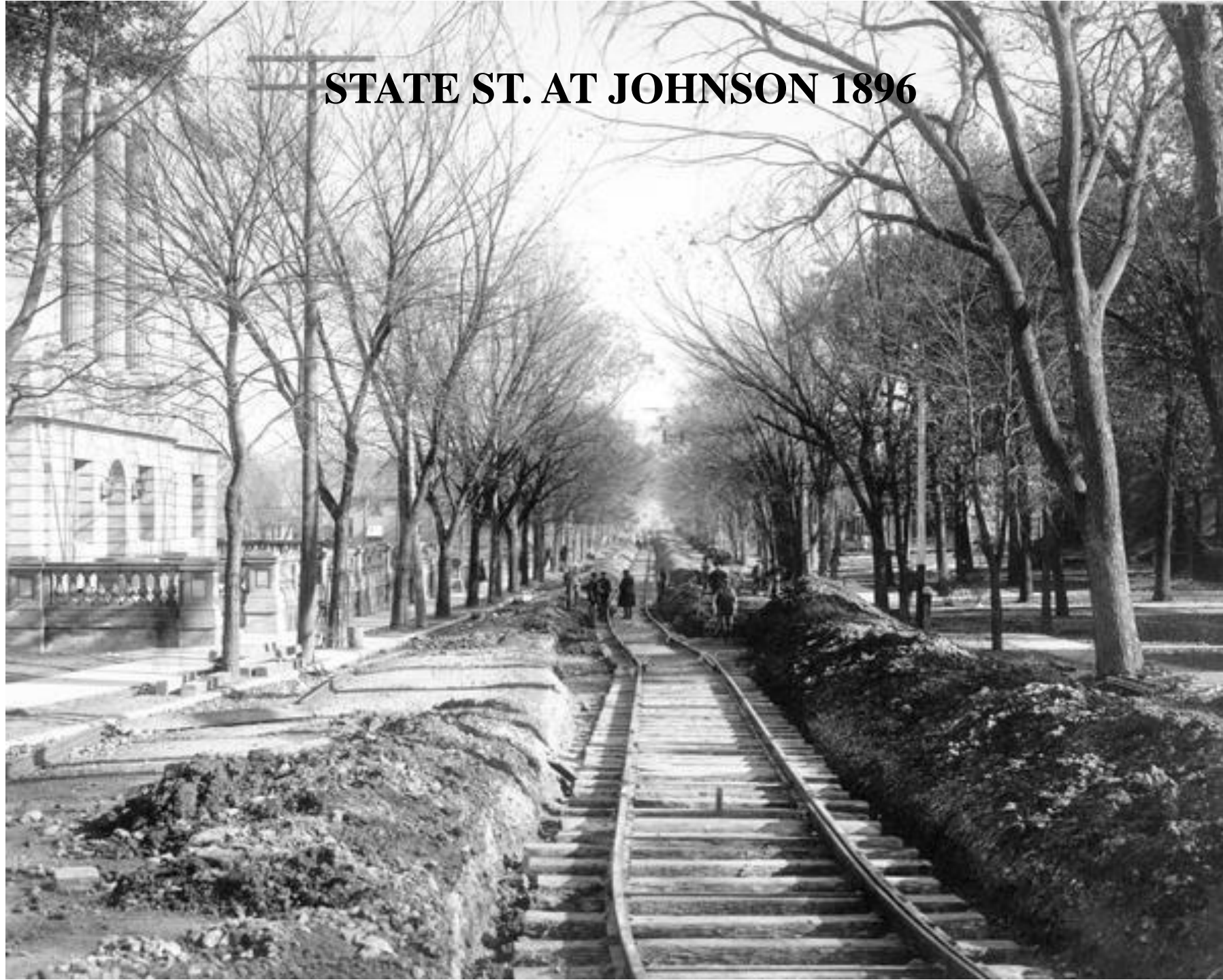




1905

LOOKING WEST ON
MAIN ST.

STATE ST. AT JOHNSON 1896



1930
STATE ST.



WICKT
Madison
10-11000

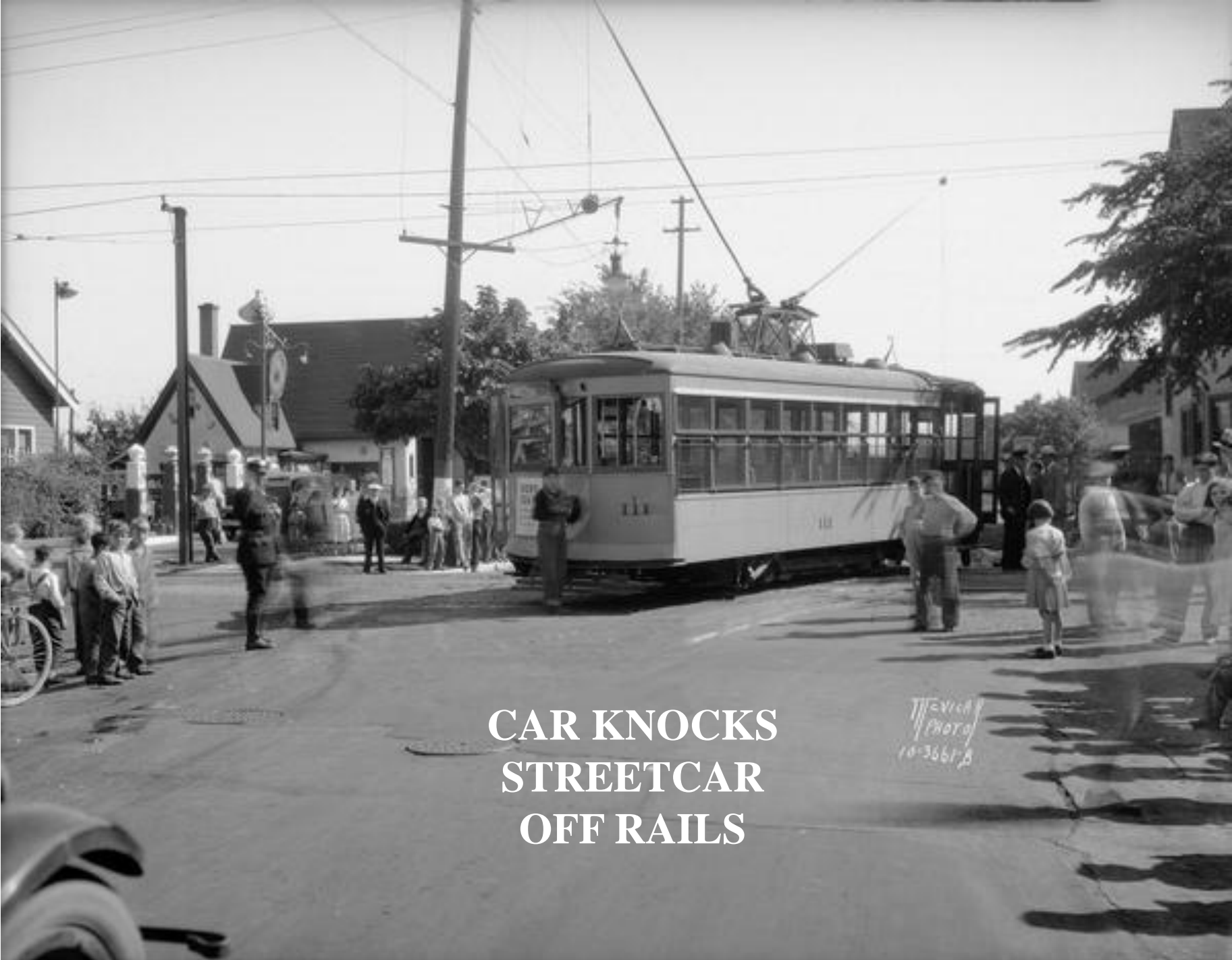
STARTING WITH PRE-VIEW TONIGHT AT 11:15 P.M.

THEY'RE HERE AGAIN THE STARS OF THE COCOANUTS
4 MARX BROS. ANIMAL CRACKERS
RKO CAPITOL



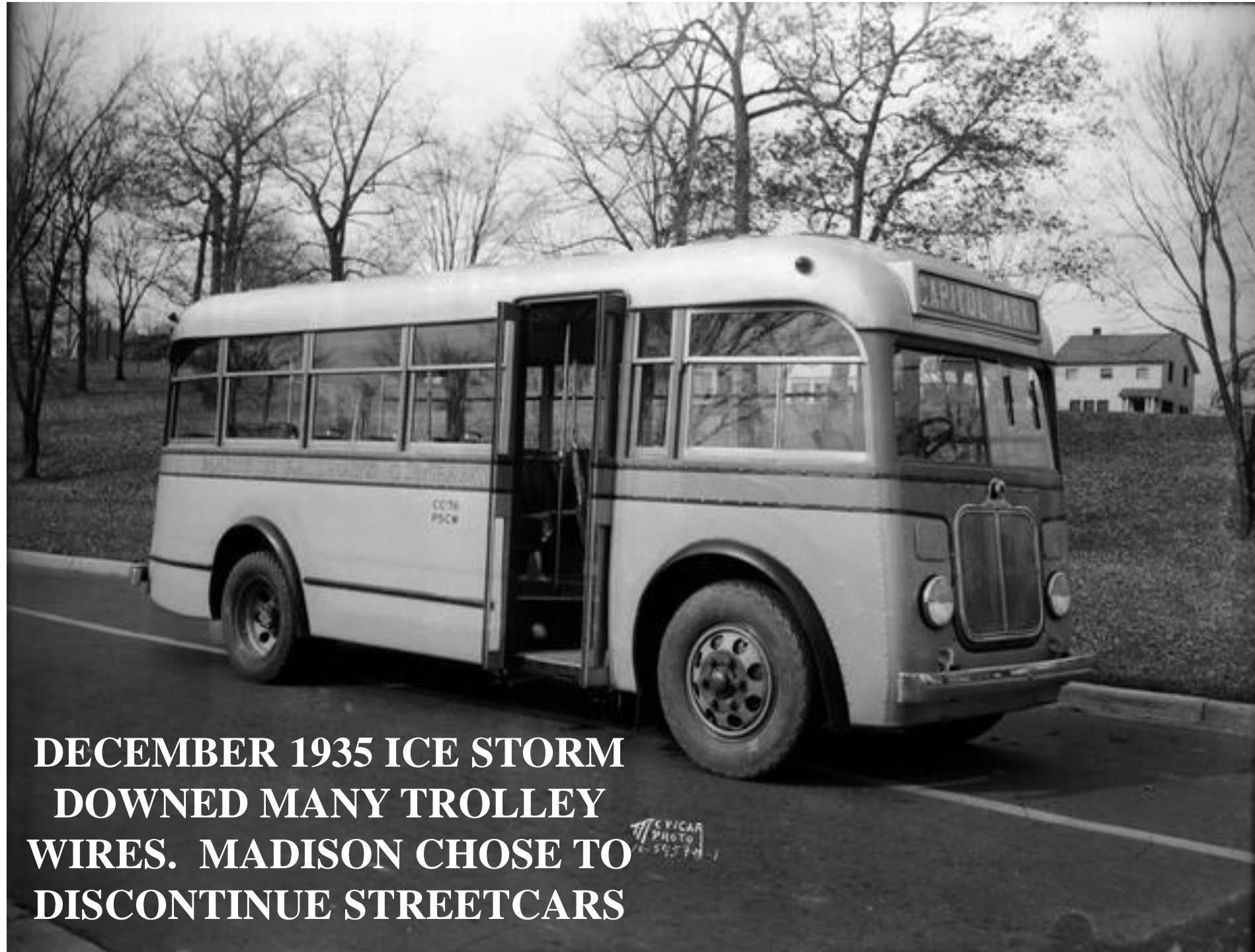
1930

*Meylan
Madison
10-11-30*



CAR KNOCKS
STREETCAR
OFF RAILS

EVIDENCE
PHOTO
10-3661-B

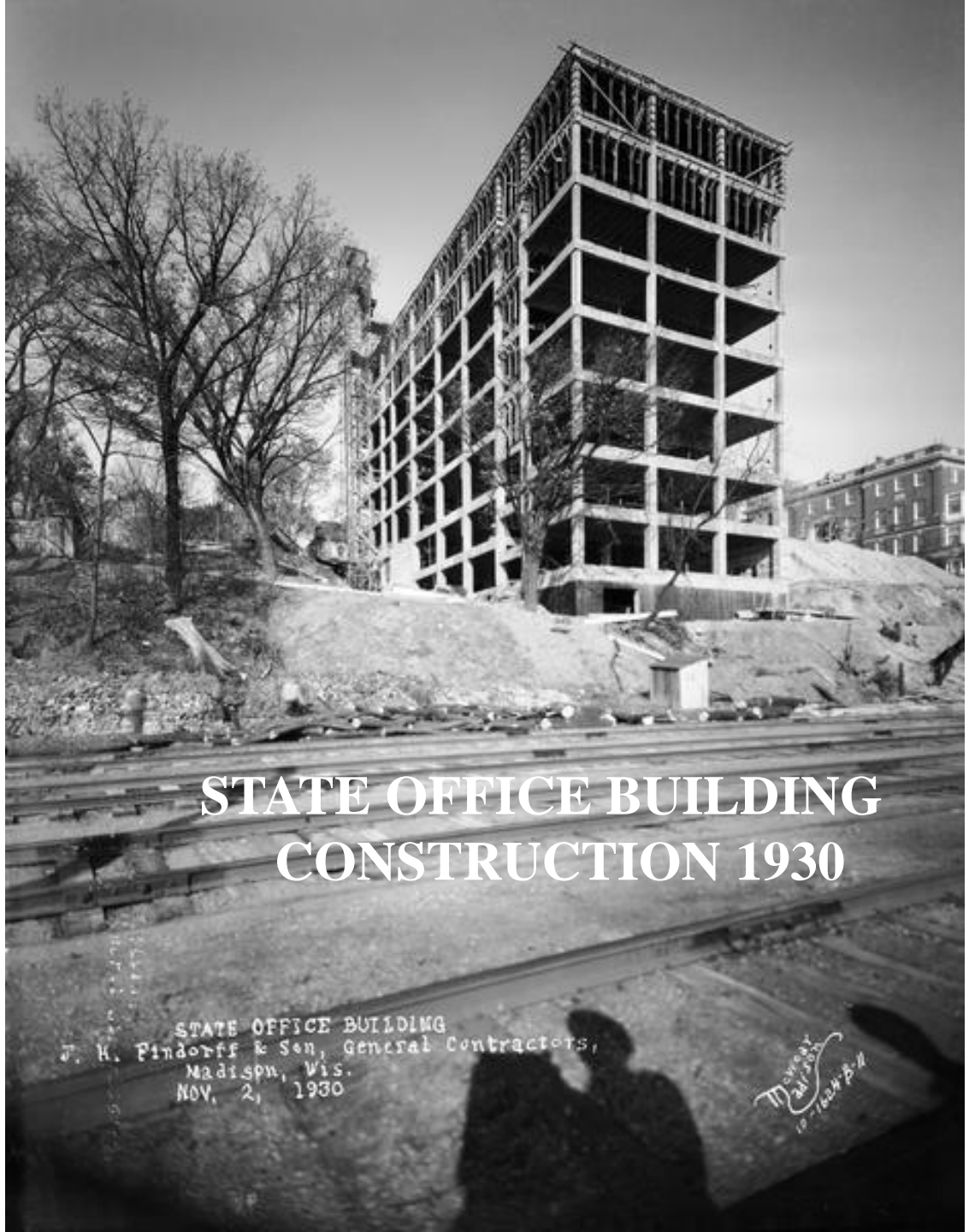


**DECEMBER 1935 ICE STORM
DOWNED MANY TROLLEY
WIRES. MADISON CHOSE TO
DISCONTINUE STREETCARS**

EVICAR
PHOTO
16-59574

1952





STATE OFFICE BUILDING CONSTRUCTION 1930

STATE OFFICE BUILDING
J. H. Pindorff & Son, General Contractors,
Madison, Wis.
NOV. 2, 1930

M. J. Pindorff
10-16-30

SPEED LIMIT
25 MILES
PER HOUR

GOOD
SHOES

CASH
PAID
FOR
GOLD
SILVER
AND
JEWELRY

1906

STATE
STREET

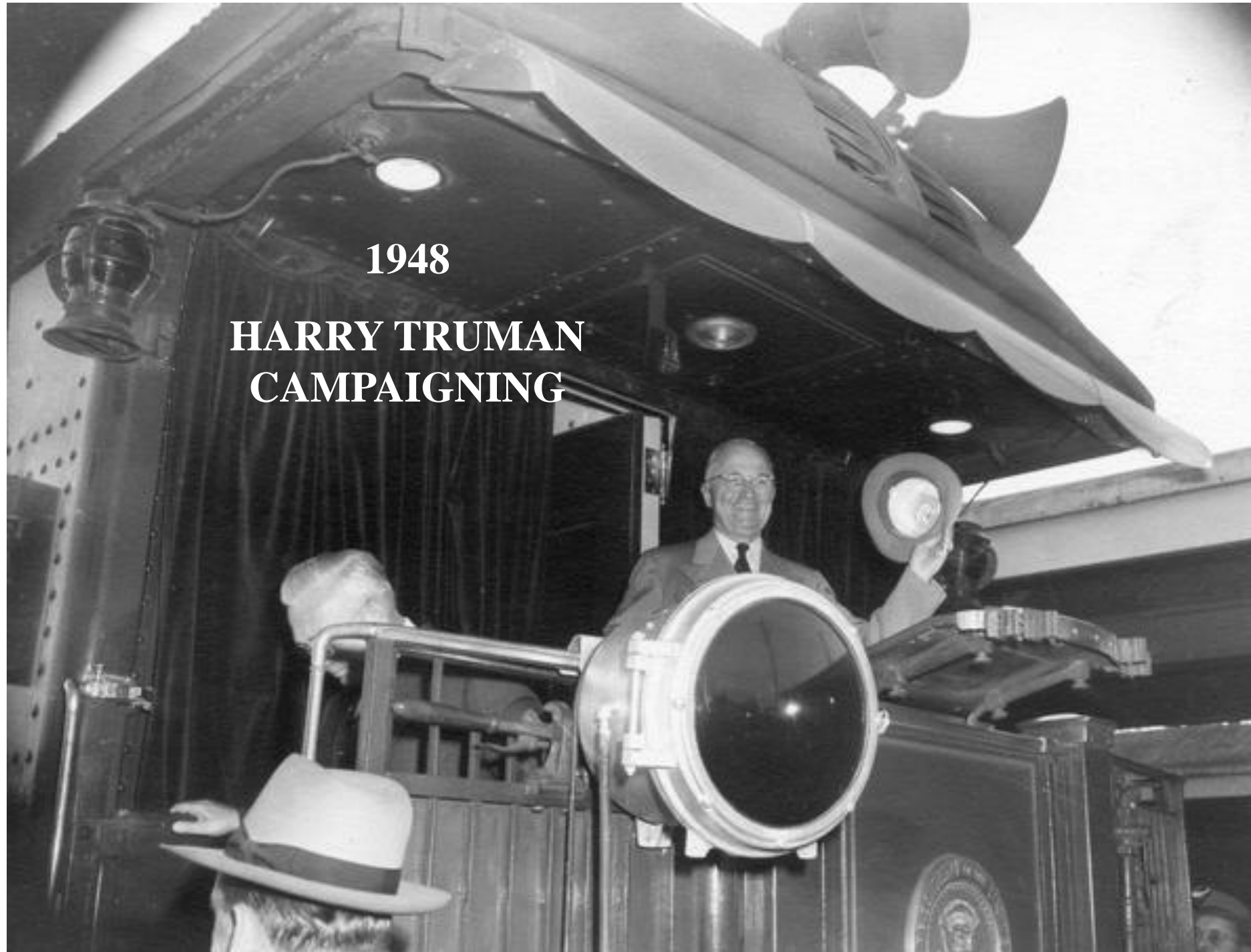




**GOVERNOR KOHLER AND PRESIDENT HOOVER
1932**

1948

HARRY TRUMAN
CAMPAIGNING





1950

HARRY TRUMAN WITH
GOV. RENNEBOHM



10-4878-2
1/20/49
1/20/49





1896

**SAE FRATERNITY
IN 1937 WITH
CROONER RUDY
VALLEE**





FRANK ROGERS PHOTO



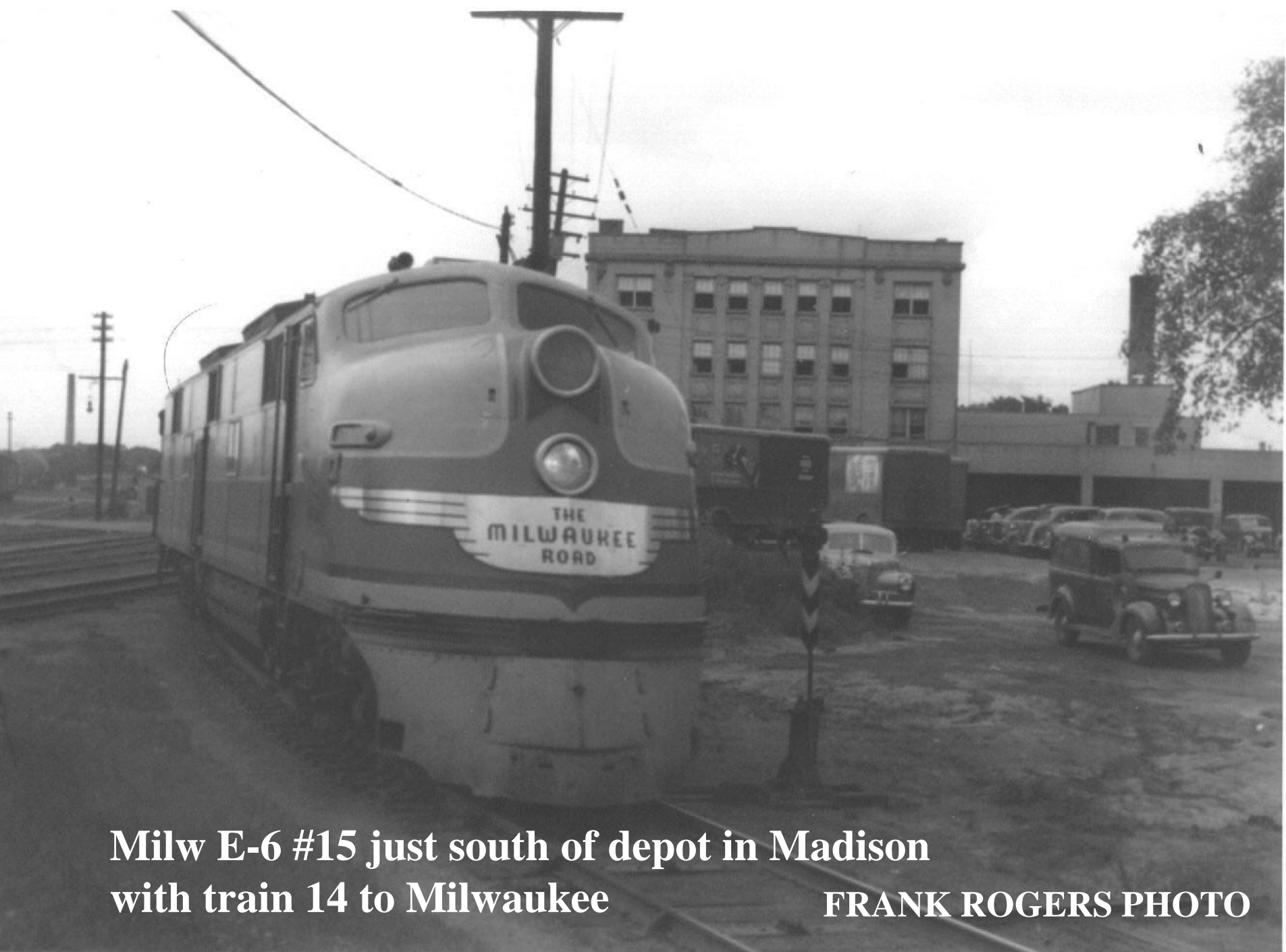
**FRANK ROGERS
PHOTO**

The first diesel switcher in Madison, #1617 an SW-1
at use in Madison yard prior to striping.
The EMC trainer was on site when this photo was taken in 1939.



**CNW 1629 with train 508 local to Chicago
just before Brittingham Bay**

FRANK ROGERS PHOTO



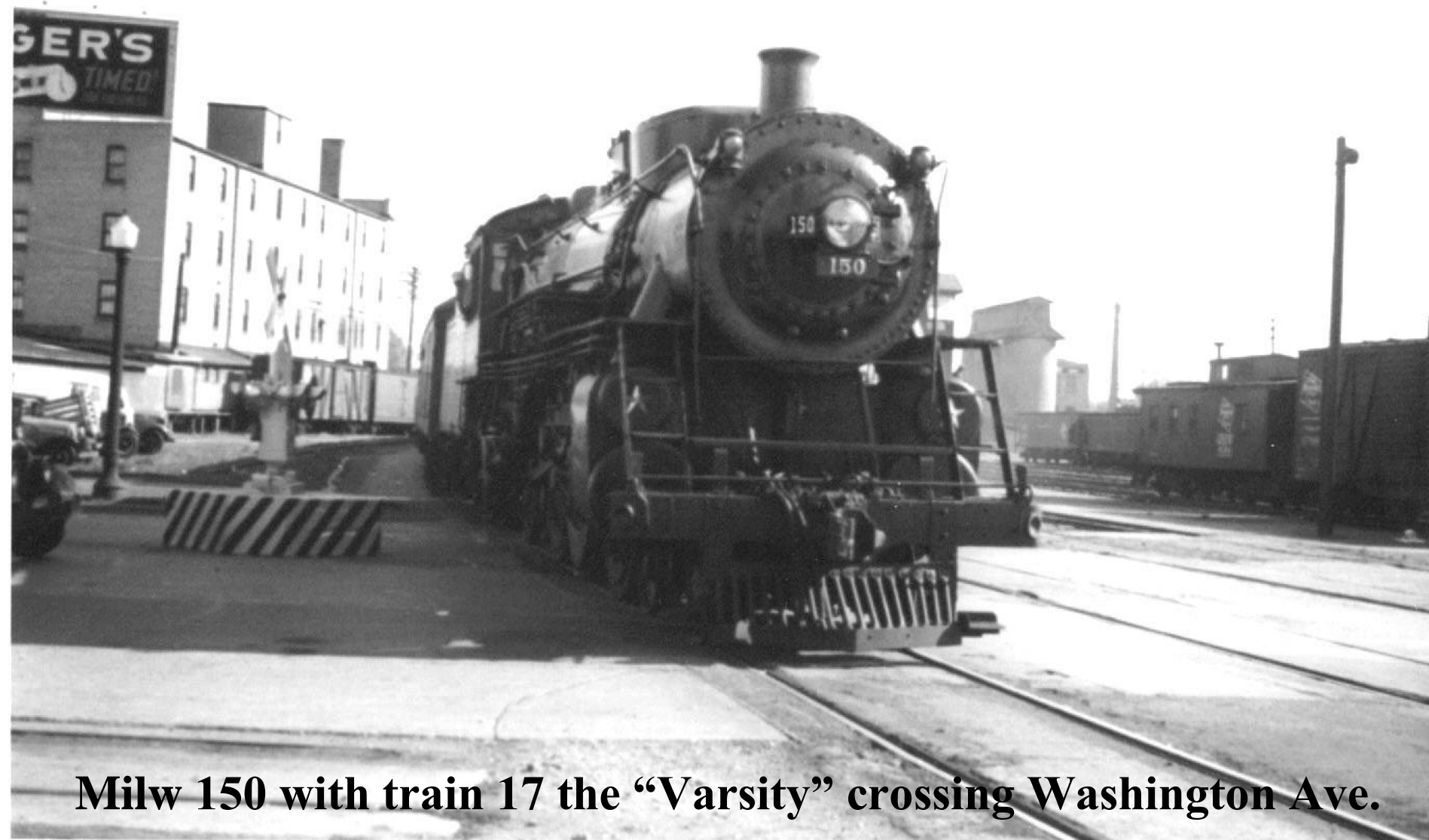
**Milw E-6 #15 just south of depot in Madison
with train 14 to Milwaukee**

FRANK ROGERS PHOTO



IC 778 at rest near turntable in Madison late 1930's
FRANK ROGERS PHOTO

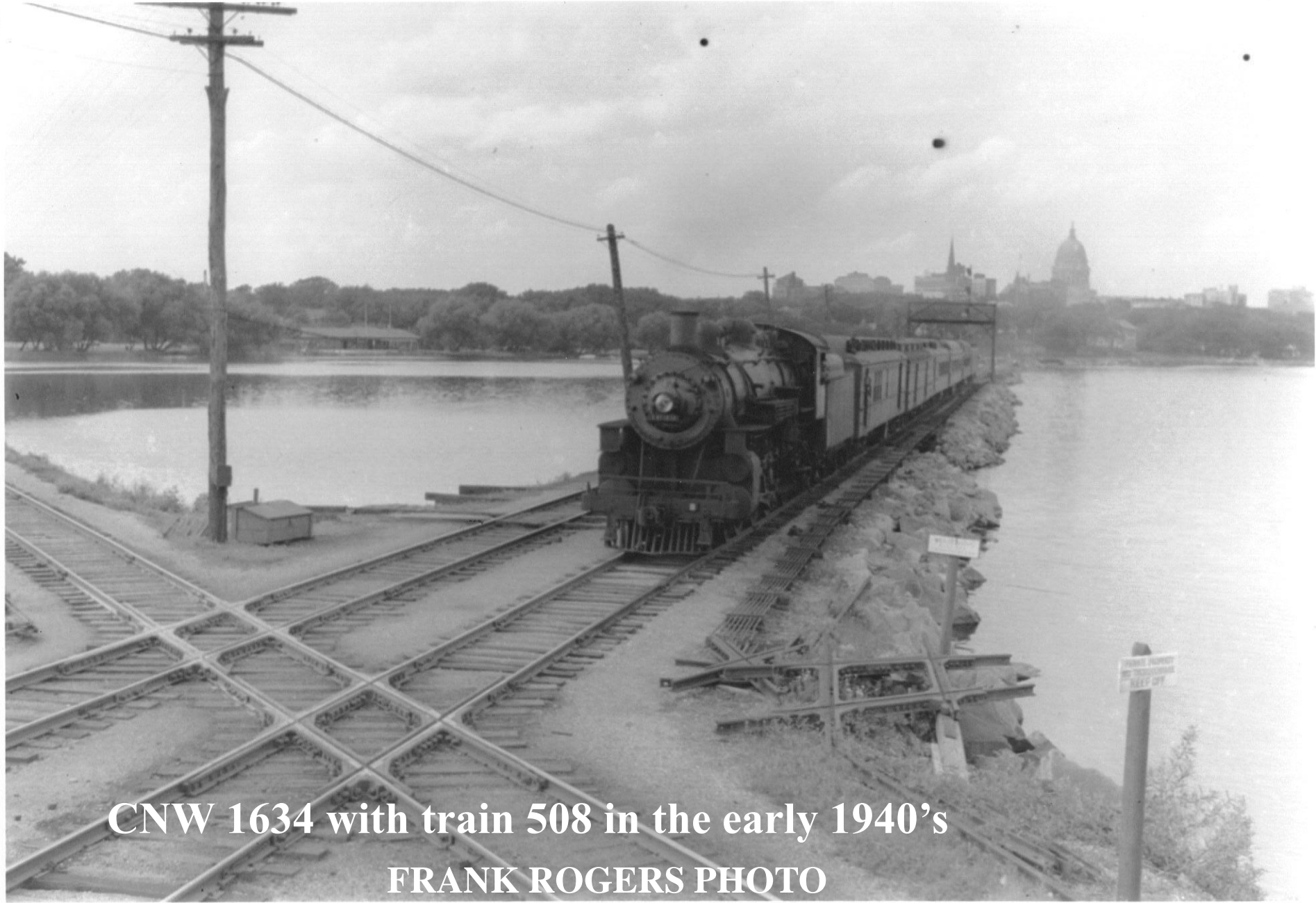
FRANK ROGERS PHOTO



Milw 150 with train 17 the "Varsity" crossing Washington Ave.



Milw 1072 switching in Middleton
FRANK ROGERS PHOTO

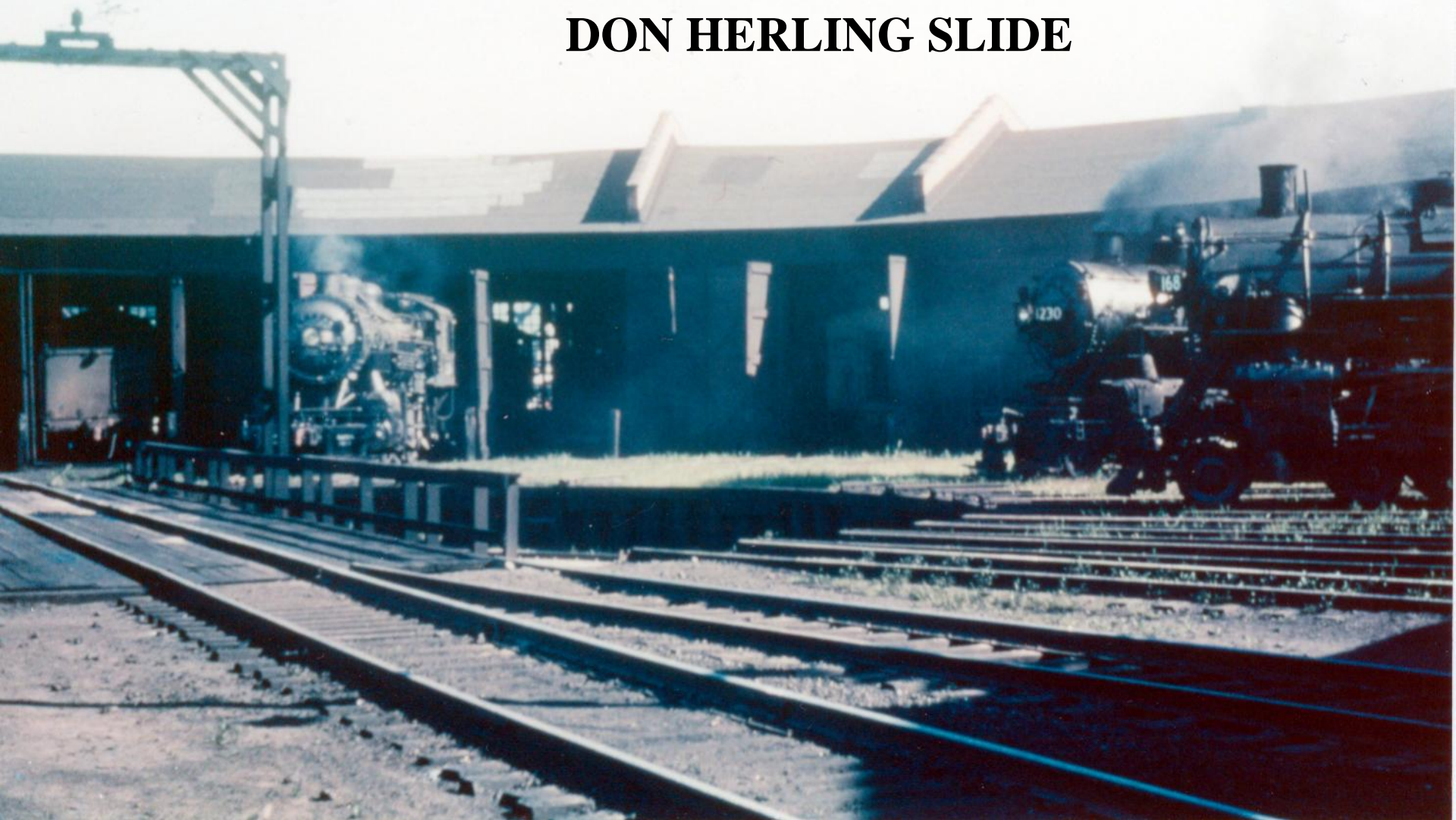


CNW 1634 with train 508 in the early 1940's
FRANK ROGERS PHOTO

**DIORAMA BUILT BY
SCWD MEMBERS FOR
1997 NMRA NATIONAL
CONVENTION IN MADISON**



**MILWAUKEE ROAD MADISON ROUNDHOUSE
DON HERLING SLIDE**



**MILWAUKEE ROAD CLASS A ATLANTIC
DON HERLING SLIDE**





DON HERLING SLIDE



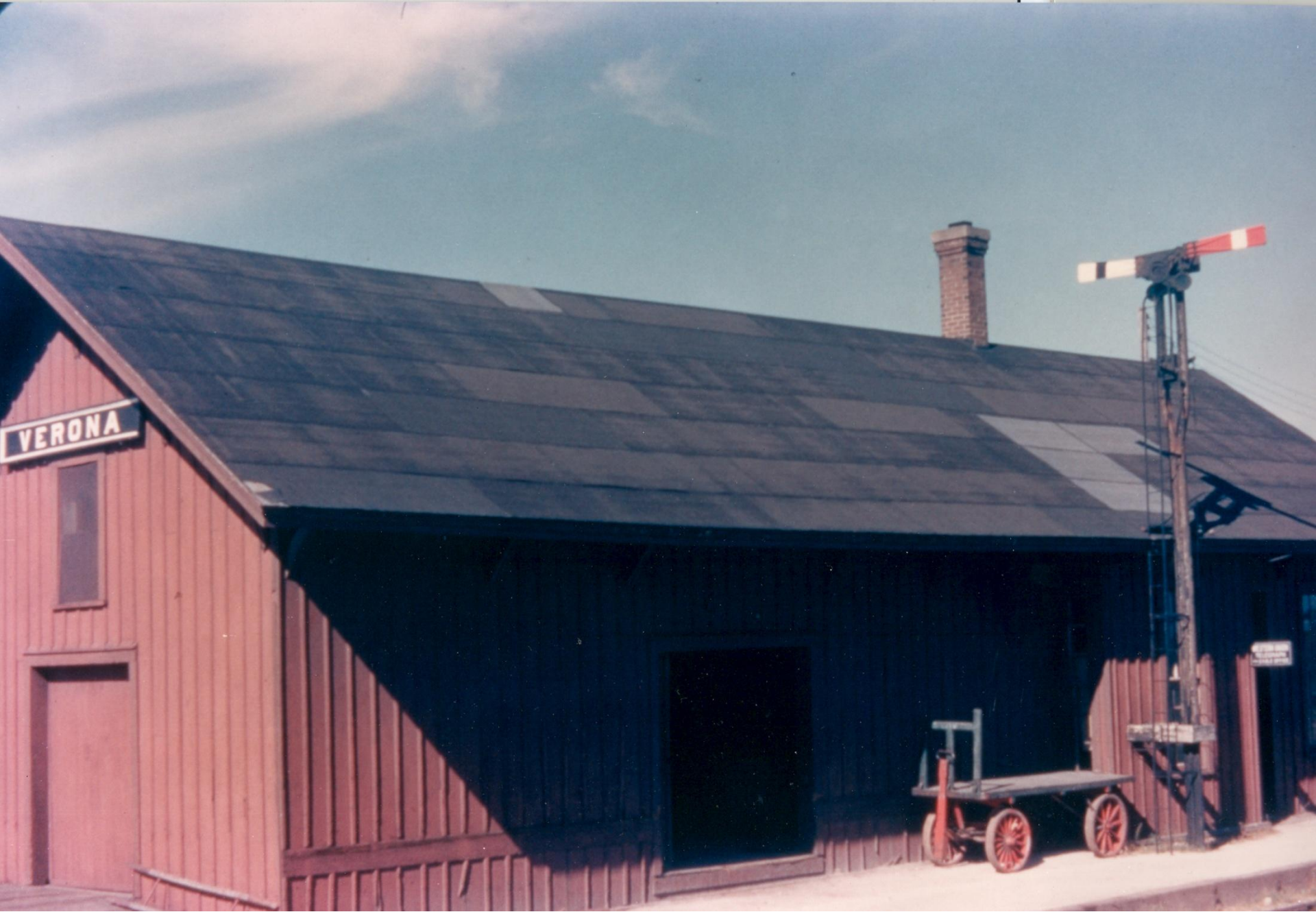
DON HERLING SLIDE



HEADING EAST FROM
VERONA ON LATE 1800s

LOOKING WEST IN VERONA





DON HERLING SLIDE

CROSSING US 151 WEST SIDE OF VERONA
DON HERLING SLIDE





“C” LINER IN MADISON YARDS







E. WILSON ST.









WILLIAM D. MIDDLETON PHOTO

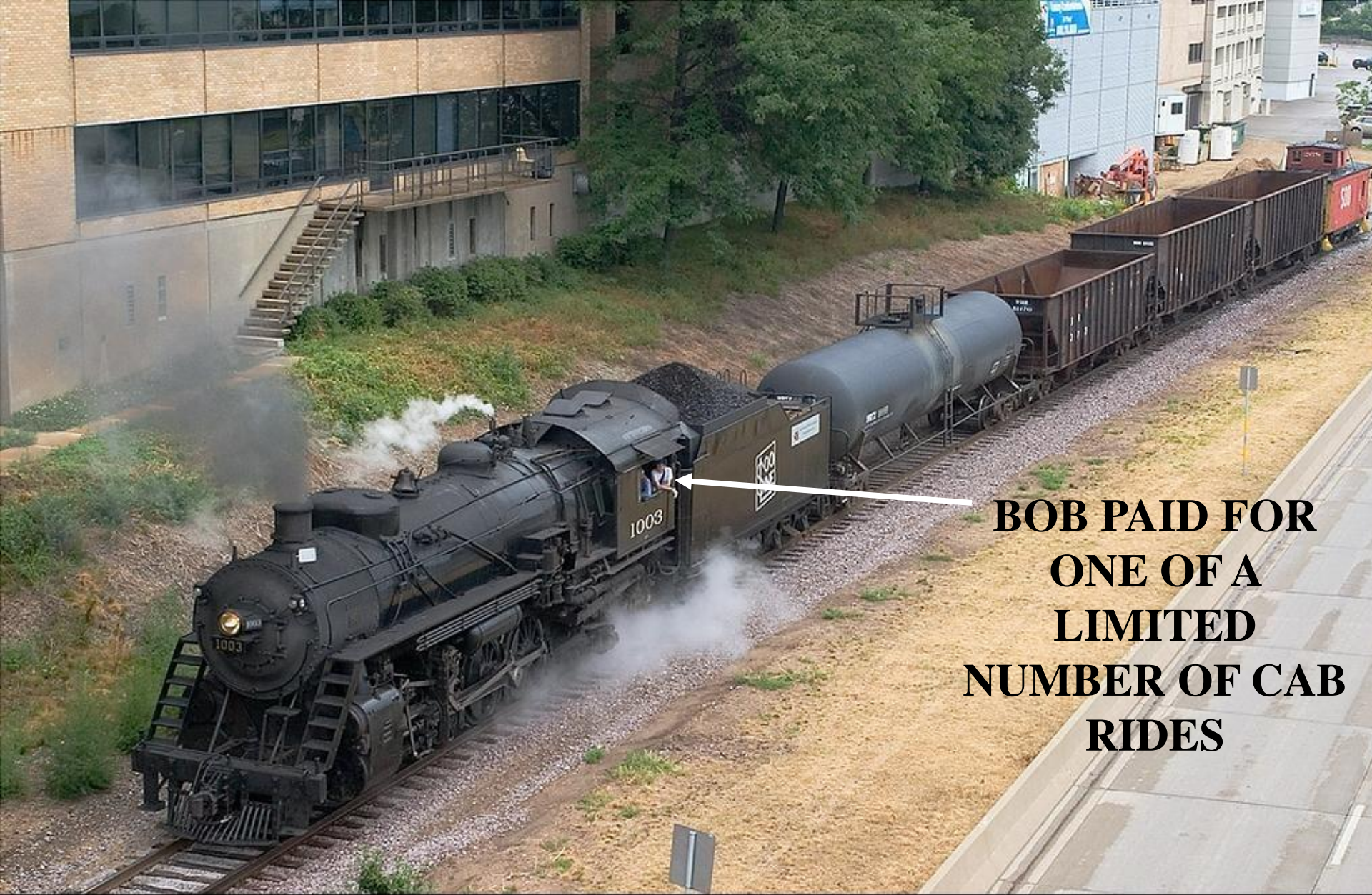


SOO LINE IN MADISON?



JULY 2005

**25TH ANNIVERSARY OF
WISCONSIN SOUTHERN**



**BOB PAID FOR
ONE OF A
LIMITED
NUMBER OF CAB
RIDES**



**THANKS FOR YOUR
ATTENTION!**