

8451 & 8425 BUCKLAND MILL ROAD, GAINESVILLE, VA 20155

offered at  
**\$2,299,000**



## Beautiful Buckland Mill Farm on Lake Manassas

With 29 acres and close to 1/2 mile of lake frontage, Buckland Mill Farm is being offered in its entirety. Property includes 6,307 sf main house with 5 bedrooms and 5 full bathrooms. Stone guest house with 1,570 sf has 2 bedrooms and 1 full bath, but can be expanded up to 5 bedrooms. Property has wonderful views of a 250 acre historic horse farm. This could be your perfect country estate!

Contact: PETE EBERT  
(571) 330-2225  
[pete@farmsandacreageinc.com](mailto:pete@farmsandacreageinc.com)  
[farmsandacreageinc.com](http://farmsandacreageinc.com)

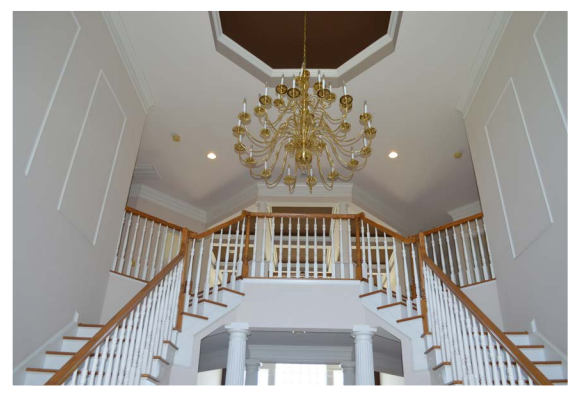


2407 Columbia Pike, Suite 200  
Arlington VA 22204  
703-591-7020



# 8451 & 8425 BUCKLAND MILL ROAD, GAINESVILLE, VA 20155

Main House - Foyer with Dual Staircase



Main House - Grand Family Room



Guest House - Rustic Fireplace in Living Room



Guest House - Family Room with Fireplace



## Main House (MLS# PW9779551):

- 5 bedrooms on second level
- 5 full bathrooms
- Gourmet kitchen with granite countertops and stainless appliances
- Sun-filled morning room off kitchen
- Bonus conservatory on main level
- Owner's suite features sitting area and 2 large walk-in closets
- 3 car garage
- Backup generator
- Property includes a barn

## Stone Guest House:

- 2 bedrooms
- 1 full bathroom
- 3 car garage
- 5 bedroom perc
- Floorplans depicting an expansion are available if interested in reviewing

Contact: PETE EBERT

(571) 330-2225

[pete@farmsandacreageinc.com](mailto:pete@farmsandacreageinc.com)

[farmsandacreageinc.com](http://farmsandacreageinc.com)



2407 Columbia Pike, Suite 200  
Arlington VA 22204  
703-591-7020