

**Mouse Anti-CD205/LY75/gp200 [SPM487]: MC0310, MC0310RTU7**

**Intended Use:** For Research Use Only

**Description:** CD205, also named DEC-205, belongs to the macrophage mannose receptor family of C-type lectin endocytic receptors. CD205 is predominantly expressed by the thymic cortical epithelium and by dendritic cells (DC), but can also be detected at low levels in T and B lymphocytes and several other epithelial cell types. CD205 is a novel thymic epithelial marker that is important for the positive selection process of thymocytes. It is a sensitive and specific marker for thymoma, while the sensitivity to thymic carcinoma is lower than CD5 and CD117.

**Specifications**

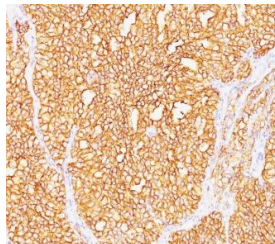
Clone: SPM487  
 Source: Mouse  
 Isotype: IgG2b/k  
 Reactivity: Human, horse  
 Localization: Membrane, cytoplasm  
 Formulation: Antibody in PBS pH7.4, containing BSA and  $\leq 0.09\%$  sodium azide (NaN<sub>3</sub>)  
 Storage: Store at 2°- 8°C  
 Applications: IHC, Flow Cyt., IF, WB  
 Package:

Description	Catalog No.	Size
CD205/LY75/gp200 Concentrated	MC0310	1 ml
CD205/LY75/gp200 Prediluted	MC0310RTU7	7 ml

**IHC Procedure\***

Positive Control Tissue: Tonsil  
 Concentrated Dilution: 50-200  
 Pretreatment: Tris EDTA pH9.0, 15 minutes using Pressure Cooker, or 30-60 minutes using water bath at 95°-99°C  
 Incubation Time and Temp: 30-60 minutes @ RT  
 Detection: Refer to the detection system manual

\* Result should be confirmed by an established diagnostic procedure.



FFPE human RCC stained with anti-CD205 using DAB

**References:**

1. In vivo physiological and transcriptional profiling reveals host responses to Clostridium difficile toxin A and toxin B. D'Auria KM, et al. Infect Immun 81:3814-24, 2013.
2. Generation of anti-human DEC205/CD205 monoclonal antibodies that recognize epitopes conserved in different mammals. Park CG et al. J Immunol Methods. 2012.
3. Diagnostic utility of thymic epithelial markers CD205 (DEC205) and Foxn1 in thymic epithelial neoplasms. Nonaka D et al. Am J Surg Pathol. 2007.

Doc. 100-MC0310  
Rev. A