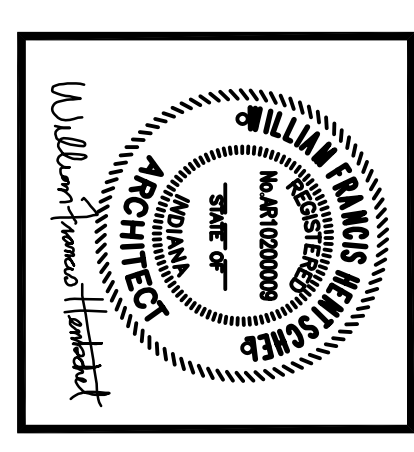


DATE:	FEBRUARY 13, 2023
FILE:	22-127 A401.DWG
DRAWN BY:	AKG
CHECKED BY:	WFH
REVISIONS:	



**FORUM ARCHITECTS, LLC**  
 Mishawaka, Indiana 415 Lincolnway East  
 Phone: 574.233.2119  
 email: Info@forumarchitectsllc.com

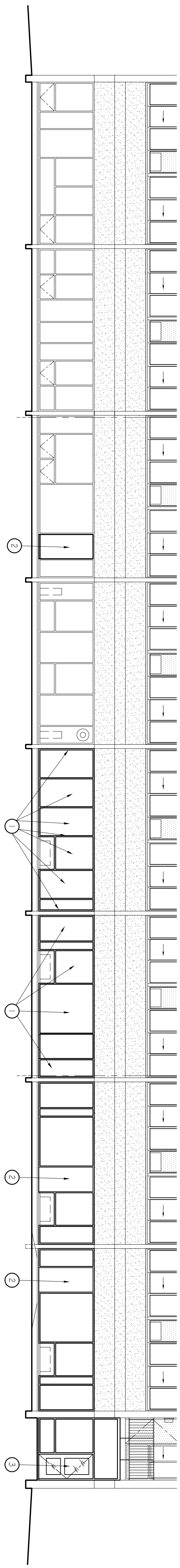
2022 CAPITAL FUND EMERGENCY SAFETY & SECURITY GRANT

**WATERFALL HIGH RISE**  
 THE HOUSING AUTHORITY OF ELKHART, INDIANA

303 WATERFALL DRIVE ELKHART, INDIANA

EXTERIOR ELEVATIONS

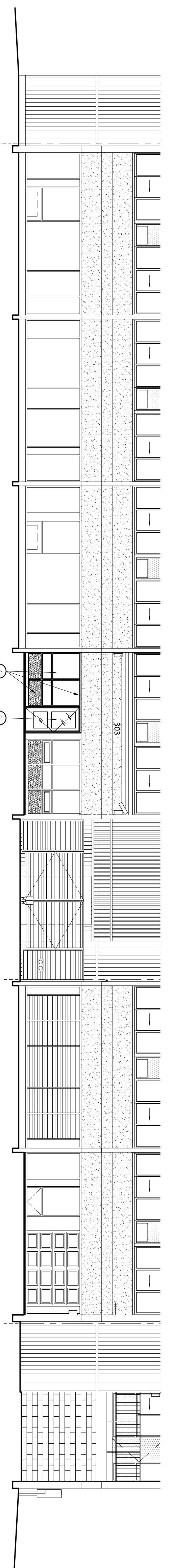
**A401**



**NORTH ELEVATION**  
 SCALE: 1/8" = 1'-0"

**KEY NOTES**

- ① NEW BULLET RESISTANT ALUMINUM STOREFRONT FRAMING AND GLAZING
- ② NEW HOLLOW METAL INSULATED DOOR
- ③ NEW ALUMINUM STOREFRONT DOOR
- ④ NEW ALUMINUM STOREFRONT FRAMING, GLAZING, AND SIGNETTE (ATTRIBUTE #1)



**SOUTH ELEVATION**  
 SCALE: 1/8" = 1'-0"

