

CAUTION

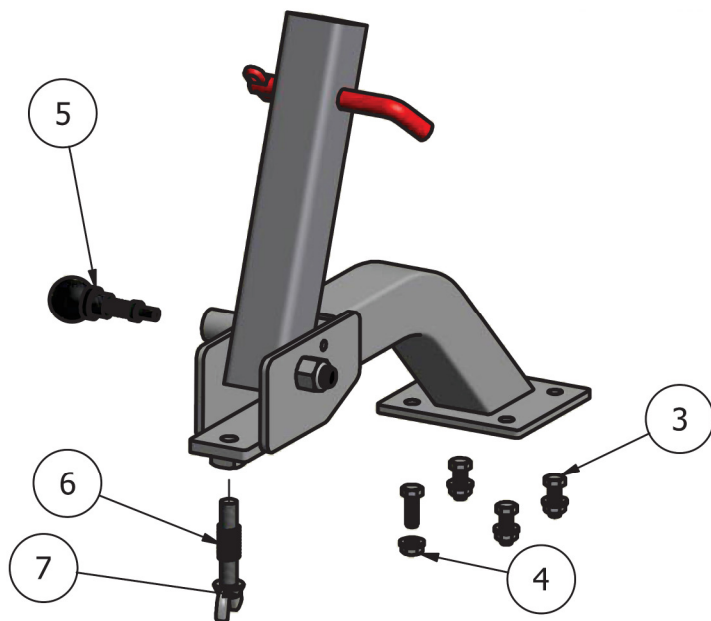


**Safety
glasses
required**

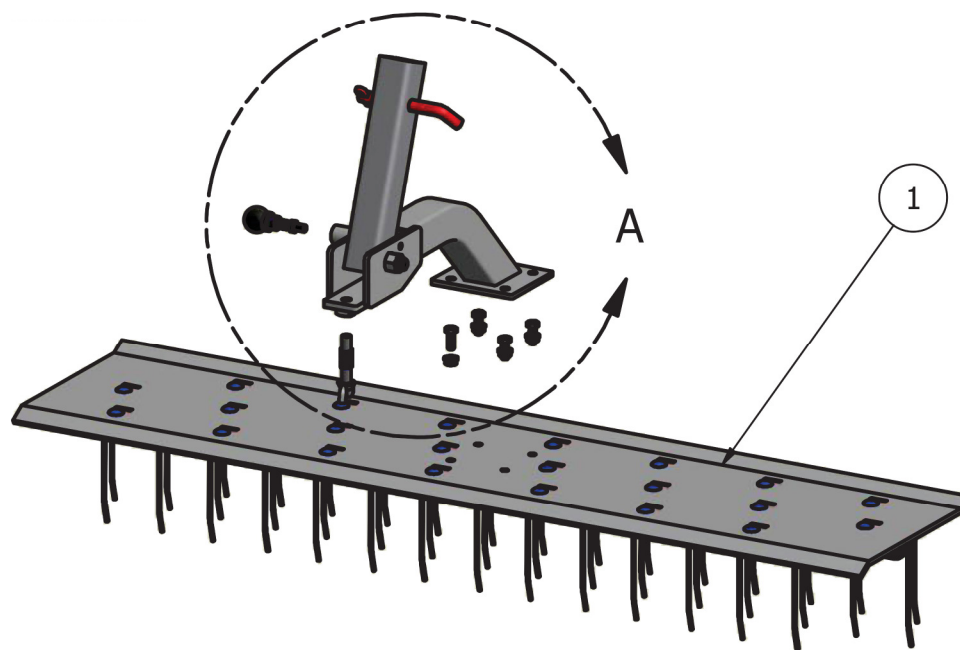


Dethatcher Plate Installation Instructions

NOTE: A pair of safety glasses is included in the box



DETAIL A



- 1 - Attach the Dethatcher Arm Assembly (Item 2) to the Dethatcher Plate (Item 1) using the bolts and nuts (Item 3 & 4) provided in the box.
- 2 - Screw in the PoP Pin W/ Lockout Position (Item 5) to the Dethatcher Arm Assembly (Item 2).
- 3 - Insert the Wing Bolt Spring (Item 6) on the Wing Bolt (Item 7).
- 4 - Screw in the Wing Bolt with the spring onto the Dethatcher Arm Assembly.

J.C.B

Parts List

| ITEM | QTY | PART NUMBER | DESCRIPTION |
|------|-----|-------------|-----------------------------|
| 1 | 1 | DTP134 | 34" Dethatcher Plate |
| 1.2 | 1 | DTP140 | 40" Dethatcher Plate |
| 1.3 | 1 | DTP146 | 46" Dethatcher Plate |
| 1.4 | 1 | DTP152 | 52" Dethatcher Plate |
| 2 | 1 | DTDA | Dethatcher Arm Assembly |
| 3 | 4 | 3816-1 | 3/8-16 X 1" Bolt |
| 4 | 4 | 3816-FN | 3/8-16 Flange Nut |
| 5 | 1 | 69860003 | PoP Pin W/ Lockout Position |
| 6 | 1 | 69860005 | Wing Bolt Spring |
| 7 | 1 | 69860006 | Wing Bolt |