

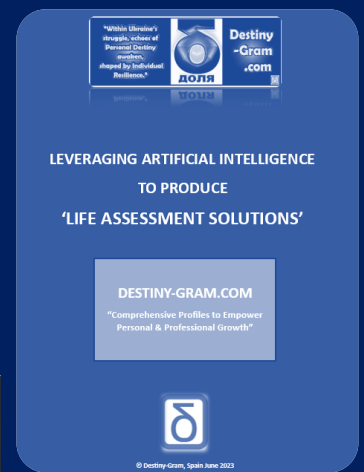
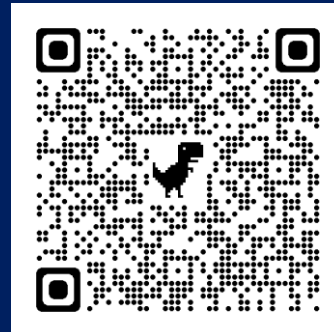
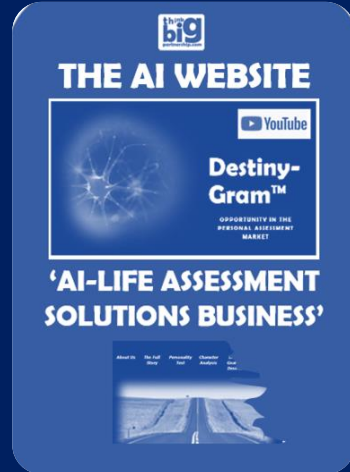
LEVERAGING ARTIFICIAL INTELLIGENCE

# 'LIFE ASSESSMENT SOLUTIONS'

**Destiny-Gram.com**



*"Destiny transcends time, shaping the present with purpose, and in its wake, leaves behind a lasting legacy."*



CREATE **YOUR** UNIQUE PERSONAL PROFILE

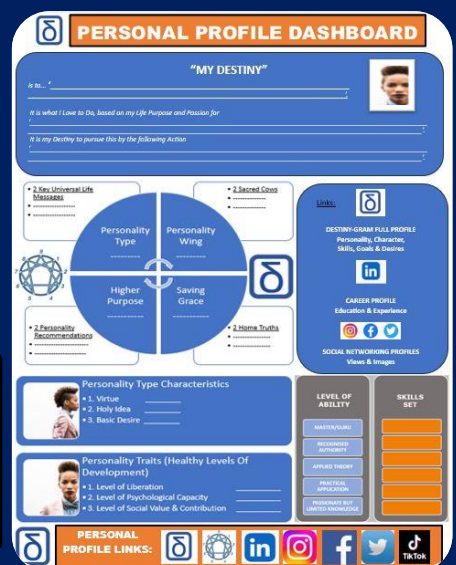
With the integration of AI into Social Network Services, you can tap into advanced analysis, data-driven insights, and personalised recommendations that enhance your understanding of yourself and align your path with true calling. Embrace the synergy between human introspection and AI capabilities to Set up a comprehensive 'Destiny-Gram Personal Profile' and unlock your fullest potential in Self-Awareness, Goal Setting, Career Planning, Decision Making, Personal Growth and Development, and Networking and Opportunities in both your Professional and Private Lives.



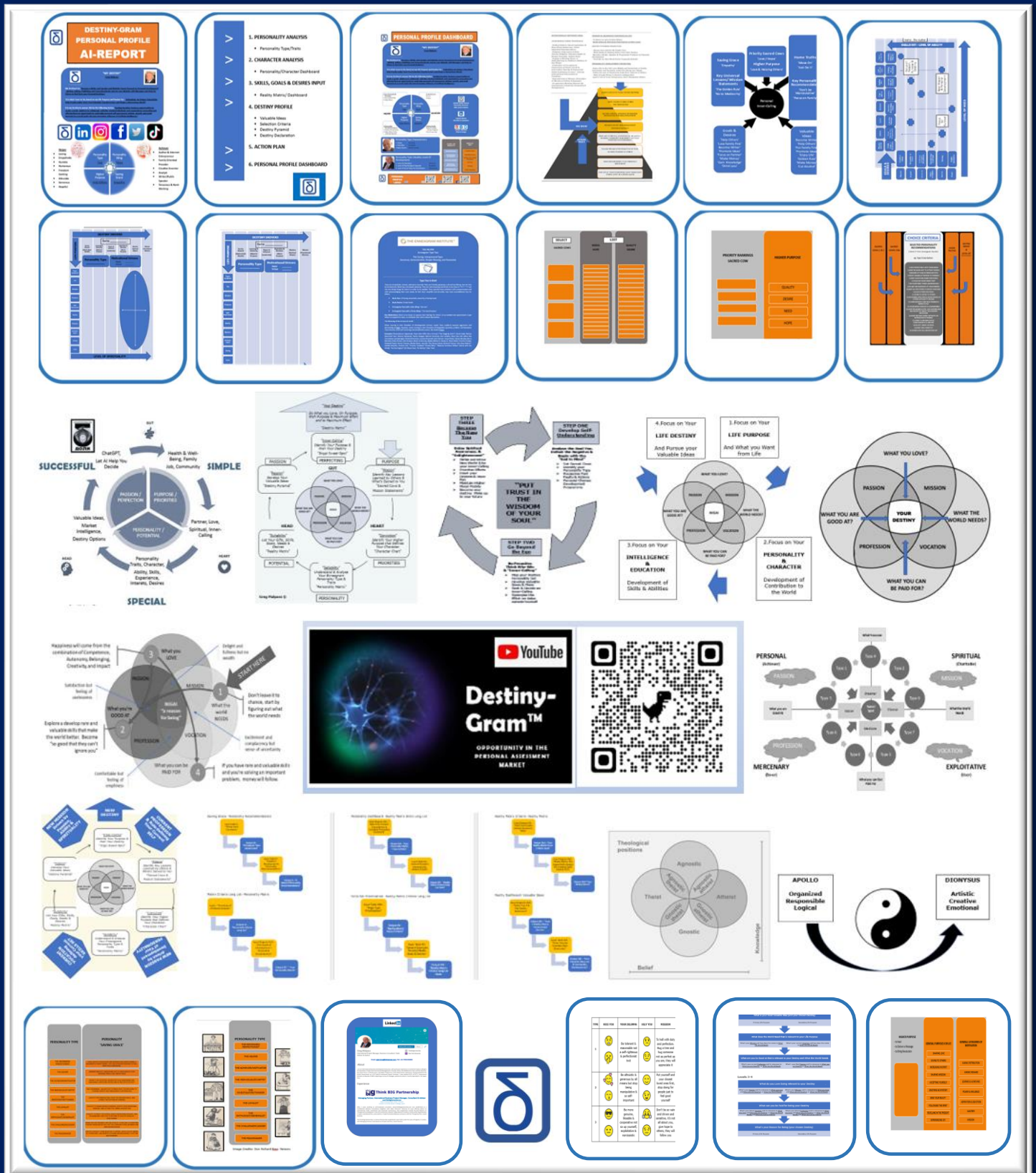
Sign up to [www.Destiny-Gram.com](http://www.Destiny-Gram.com) to generate your unique Personal Profile and benefit from the Platform's Personal Development and Networking Opportunities.



"We hold a Monopoly on Unique Personal Profiles"



# Destiny-Gram is the only Social Networking Site that holds Comprehensive Profiles & uses AI to Empower Personal and Professional Growth .



Harness the power of AI as your ally in unravelling your Destiny through in-depth Self-Assessment.





# LEVERAGING ARTIFICIAL INTELLIGENCE 'LIFE ASSESSMENT SOLUTIONS'

**Destiny-Gram.com**

LEARN HOW TO USE  
YOUR PROFILE

*"Discovering one's Personal Destiny is like solving a complex equation;  
you need the right variables, a dash of inspiration,  
and the ability to balance the unknowns...  
Or you could just flip a coin and hope for the best!"*



## Profile, Self-Assessment & Personal Development



Who Am I?



What Do I Want to Achieve?



What is My Destiny?



How Do I Make the Right Decisions?

## Networking, Ideas & Opportunities



Jobs - Love - Ideas



How Do I Build and Use  
my Professional & Private Networks?



How Do I attain Fulfilment, True Purpose & Happiness?

**Self-Awareness:** Reflecting upon personality, values, skills, desires, and aspirations fosters self-awareness, allows individuals to gain a deeper understanding of their strengths, weaknesses, and areas for growth.

**Goal Setting:** With a clear understanding of attributes and aspirations, individuals can set meaningful goals aligned with their values and passions.

**Career Planning:** By identifying their skills, competencies, and professional interests within the comprehensive profile, individuals can align their career choices accordingly. They can explore job opportunities, industries, or paths that resonate with their profile, far deeper than existing social network sites.

**Personal Growth And Development:** Individuals can leverage self-awareness to pursue learning opportunities, acquire new skills and develop themselves personally and professionally.

**Decision-Making Support:** Individuals can refer to their comprehensive profile to ensure alignment with their values, desires, passions, and long-term aspirations, serving as a guiding framework, helping individuals make decisions that are in line with their authentic selves.

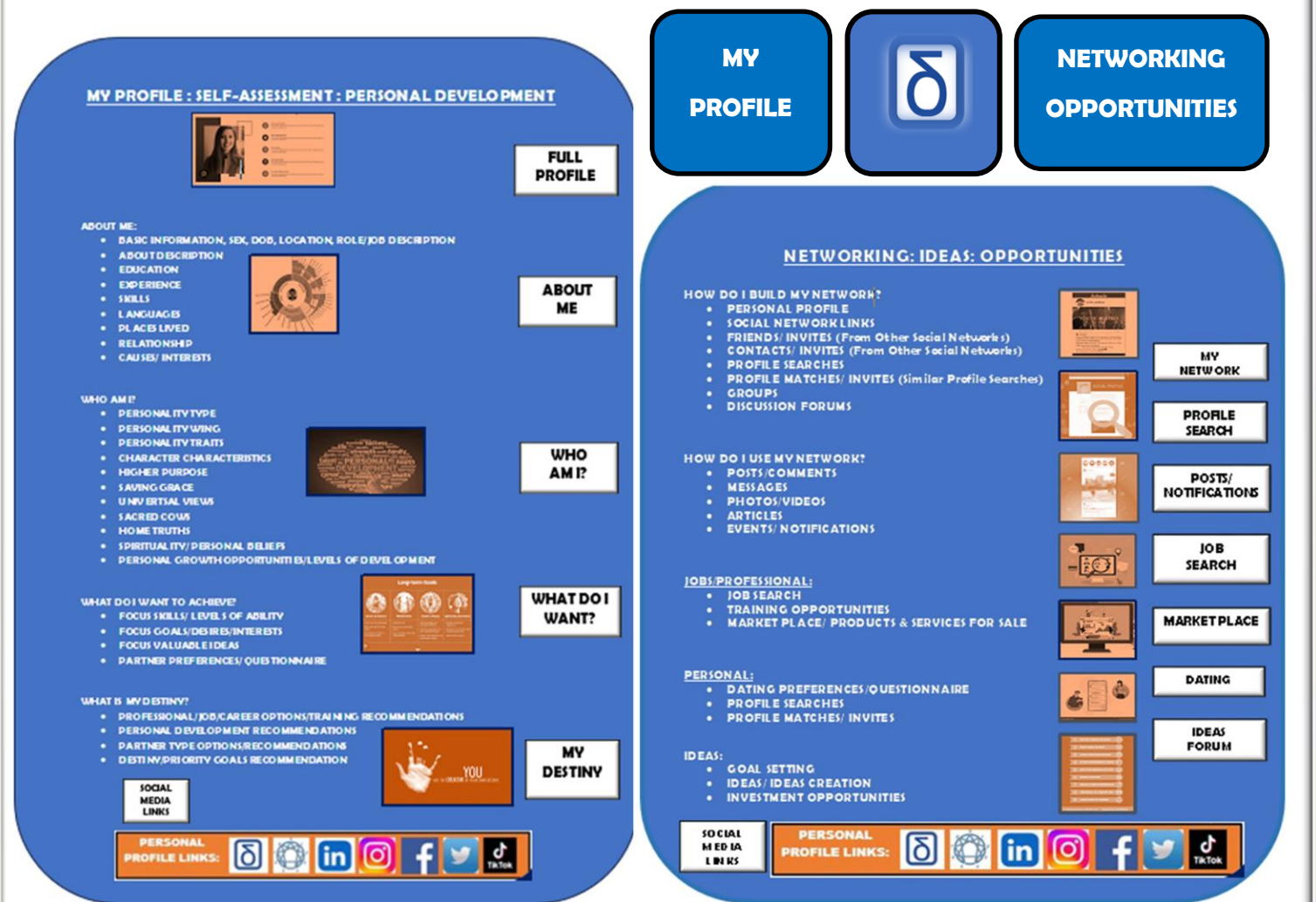
**Networking And Connections:** The comprehensive profile can facilitate meaningful connections with like-minded individuals, mentors, potential employers or partners, or professionals in related fields. By showcasing their unique qualities and interests, individuals can attract connections that can support and guide them on their chosen career path and personal lives, including job-hunting and dating.

**Ideas Creation:** Brainstorming and collaborating on new projects or ventures, in partnerships or groups. The profiles serve as a repository of knowledge and capabilities, fostering creativity and innovation by connecting individuals with complementary skills and shared passions.

**Personal Fulfilment:** By consciously shaping their lives based on their comprehensive profile, individuals have the potential to experience a greater sense of fulfilment and purpose. They can make choices that align with their true selves, leading to a more satisfying and meaningful life journey, discovering their real destiny.



**Your comprehensive profile will facilitate meaningful connections with like-minded individuals, mentors, and other professionals, including potential employers, and partners in job-hunting, and dating.**



**A comprehensive profile once formulated that encompasses various aspects of an individual's identity can help the user make informed decisions about their professional and personal lives, ultimately guiding them in setting their own path and defining their destiny.**

