

**Mouse Anti-Plasma Cells [LIV3G11 (7B18)]: MC0918, MC0918RTU7**

**Intended Use:** For Research Use Only

**Description:** Plasma cells, which are large lymphocytes derived from an antigen-specific B-cell, secrete antibodies and are responsible for humoral immunity. Plasma cells differentiate from B-cells upon stimulation by CD4+ lymphocytes. Plasma cells contain basophilic cytoplasm; their nucleus contains heterochromatin organized in a characteristic cartwheel arrangement. This antibody superbly recognizes normal and neoplastic plasma cells in routine formalin-fixed, paraffinembedded tissue sections. It is of potential value in identifying myeloma or plasmacytoma in bone marrow or other tissues. It also helps differentiate lympho-plasmacytoid lymphoma from lymphocytic and follicular lymphoma. Note that this antibody is not suitable for staining frozen tissues.

**Specifications:**

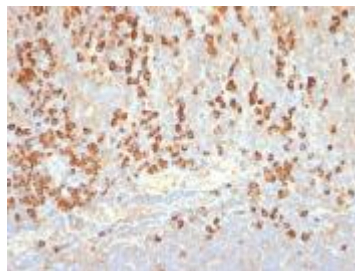
Clone: LIV3G11 (7B18)  
Source: Mouse  
Isotype: IgG2a  
Reactivity: Human  
Localization: Cytoplasm  
Formulation: Purified antibody in PBS pH7.4, containing BSA and ≤ 0.09% sodium azide (NaN<sub>3</sub>)  
Storage: Store at 2°- 8°C  
Applications: IHC  
Package:

Description	Catalog No.	Size
Plasma Cells Concentrated	MC0918	1 ml
Plasma Cells Prediluted	MC0918RTU7	7 ml

**IHC Procedure\*:**

Positive Control Tissue: Tonsil, lymph node  
Concentrated Dilution: 100-500  
Pretreatment: Citrate pH6.0, 15 minutes using Pressure Cooker, or 30-60 minutes using water bath at 95°-99°C  
Incubation Time and Temp: 30-60 minutes @ RT  
Detection: Refer to the detection system manual

\* Result should be confirmed by an established diagnostic procedure.



FFPE human tonsil stained with anti-Plasma Cell using DAB

**References:**

1. Immunohistopathologic Characterization of Plasma Cell-Rich Acute Rejection in Living-Related Renal Transplant Recipients. Mubarak M et al. Exp Clin Transplant. 2017.
2. Multifunctional role of the transcription factor Blimp-1 in coordinating plasma cell differentiation. Minnich M et al. Nat Immunol. 2016.
3. VS38: a new monoclonal antibody for detecting plasma cell differentiation in routine sections. Turley H, et al. J Clin Pathol 47:418-22, 1994.

Doc. 100-MC0918

Rev. A

Orders: [customercare@medaysis.com](mailto:customercare@medaysis.com) Support: [techsupport@medaysis.com](mailto:techsupport@medaysis.com) Tel: 510-509-3153 [www.medaysis.com](http://www.medaysis.com)

© Medaysis Company