

Kittitas County Prehospital Care Protocols

Subject: Surgical Cricothyrotomy

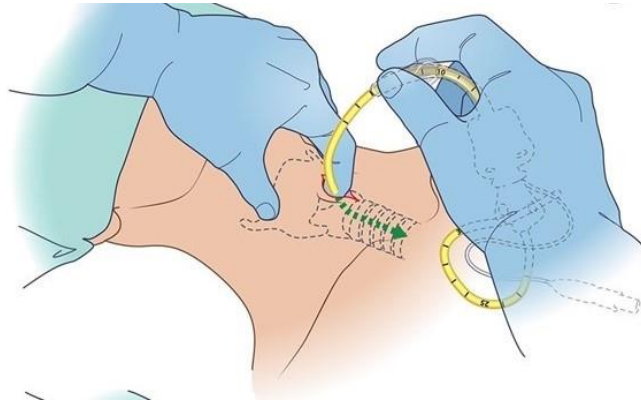
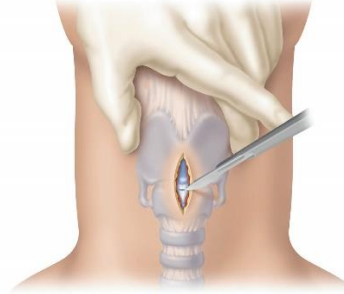
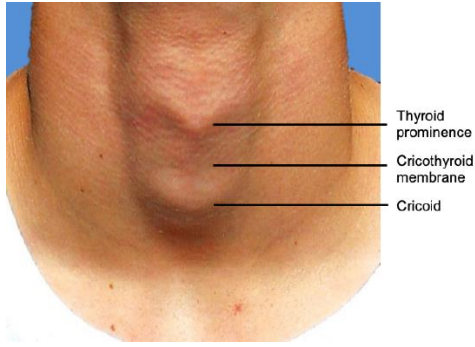
Equipment:

- Size 6.0 ET Tube
- Bougie
- 11 Blade Scalpel

Procedure:

1. Have your partner place and hold the patient's head in the hyperextended position.
2. Stabilize the patient's Larynx with your non dominant hand and palpate the cricothyroid membrane with your index finger.
3. With your dominant hand, use the scalpel to make a long (approximately 1.5") **vertical** incision starting just above the cricothyroid membrane.
4. Place the index finger of the hand stabilizing the larynx into the incision to again palpate and identify the cricothyroid membrane (you will likely be unable to see the membrane due to bleeding from the incision.)
5. Use your scalpel to carefully puncture the membrane and place your finger inside the hole.
6. Place a bougie through the membrane incision until resistance is felt at the Carina.
7. Thread a size 6.0 ET tube over the bougie until the cuff is securely in the Trachea.
8. Inflate the cuff and remove the bougie.
9. Secure the tube by using gauze padding and tape.
10. Ventilate the patient with a BVM device.

Kittitas County Prehospital Care Protocols



tracheostomy tube over bougie. A 5.5-mm tube may be used in smaller adults

