

Mouse Anti-SDHB (Succinate Dehydrogenase B) [SDHB/2382]: MC0045, MC0045RTU7

Intended Use: For Research Use Only

Description: Succinate dehydrogenase (SDH) is Complex II in the mitochondria, vital for mitochondrial electron transport, as well as Krebs cycle function. SDH catalyzes the oxidation of succinate to fumarate and transfers electrons to ubiquinone through the coordination of its four subunits (SDHA, SDHB, SDHC, and SDHD). The SDH complex functions as a tumor suppressor. Loss of any subunit proteins lead to destabilization of the complex and tumor formation. SDH subunit B (SDHB) is ubiquitously expressed in normal tissues. Germline mutations in SDHB, SDHC, or SDHD genes predispose development of pheochromocytoma, paraganglioma and gastrointestinal stromal tumor (GIST). SDHB immunohistochemistry is helpful in the identification of pheochromocytomas, paragangliomas or GIST with SDHB mutation.

Specifications

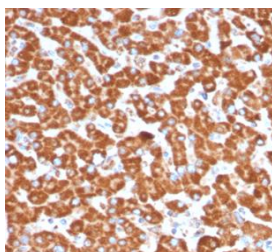
Clone:	SDHB/2382
Source:	Mouse
Isotype:	IgG2b/k
Reactivity:	Human
Immunogen:	Recombinant fragment of human SDHB protein around aa165-273
Localization:	Cytoplasm
Formulation:	Antibody in PBS pH7.4, containing BSA and ≤ 0.09% sodium azide (NaN ₃)
Storage:	Store at 2°- 8°C
Applications:	IHC, WB
Package:	

Description	Catalog No.	Size
SDHB (Succinate Dehydrogenase B) Concentrated	MC0045	1 ml
SDHB (Succinate Dehydrogenase B) Prediluted	MC0045RTU7	7 ml

IHC Procedure

Positive Control:	Kidney, liver
Concentrated Dilution:	50-200
Pretreatment:	Citrate pH6.0 or EDTA pH8.0, 15 minutes using Pressure Cooker, or 30-60 minutes using water bath at 95°-99°C
Incubation Time and Temp:	30-60 minutes @ RT
Detection:	Refer to the detection system manual

* Result should be confirmed by an established diagnostic procedure.



FFPE human liver stained with anti-SDHB using DAB

References:

1. Circumventing the Crabtree Effect: A method to induce lactate consumption and increase oxidative phosphorylation in cell culture. Mot AI, et al. Int J Biochem Cell Biol 79:128-138, 2016.
2. Oxidative capacity and glycogen content increase more in arm than leg muscle in sedentary women after intense training. Nordsborg NB, et al. J Appl Physiol 119:116-23, 2015.
3. Mitochondrial dynamics protein Drp1 is overexpressed in oncocytic thyroid tumors and regulates cancer cell migration. Ferreira-da-Silva A, et al. PLoS One 10:e0122308, 2015.
4. Independent effects of endurance training and weight loss on peak fat oxidation in moderately overweight men: a randomized controlled trial. Nordby P, et al. J Appl Physiol 118:803-10, 2015.

Doc. 100-MC0045
Rev. B