



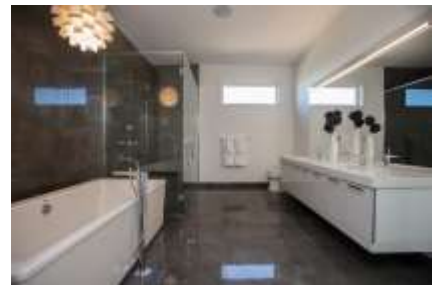
14 Avonlynn Court

- Tuxedo – (incl. walk-out feature)
- **\$1,375,000.00 incl. lot and GST** -



- Open concept 2255 sq ft bungalow style home with structural wood floor
- 10 ft. ceiling heights on main floor with 9 ft ceiling heights in lower level
- Three bedrooms up
- Walkout feature includes planter
- Deck with piles, duradec and glass rail
- Large great room with big windows and custom fireplace – entertainment unit
- Large eat-in kitchen with huge island, custom acrylic cabinetry, quartz countertops
- Stone encased ensuite, with custom closets tiled shower with seamless glass door and soaker tub
- Alarm sound system, comes complete with A/C and HRV
- Exterior is complete with unique modern design
- LED Lighting throughout
- Finished Lower Level development

Pictures may not appear exactly as shown



For more information please contact:

KDR Sales Representative

KDR Homes

204-261-8728 ext. 208

www.kdrhomes.com

info@kdrdesignbuilders.com

