

Ensuring Safety: Protecting Utility Staff In Our Communities

It's crucial to prioritize the safety of your dogs and utility employees who are operating in your vicinity. Here are some steps you can take to ensure their safety:

- 1. Secure dogs away from employees:** Ensure that any fearful or aggressive dogs are securely restrained to prevent any potential contact with utility employees while they're on your property. This measure helps us carry out our work duties safely.
- 2. Educate family members:** Ensure that all members of your household understand the importance of keeping dogs restrained and supervised when utility employees are present. Consistently reinforcing safety practices is essential.
- 3. Cooperate with instructions:** If utility employees provide any instructions or guidance regarding your dogs' presence, cooperate with them promptly to ensure the safety of all parties involved.

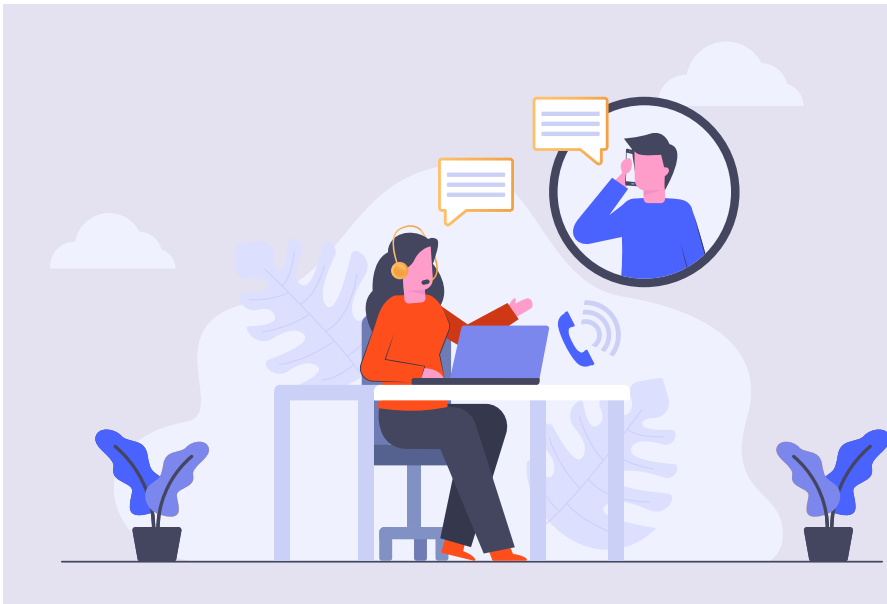
By adhering to these guidelines and taking proactive steps to ensure the safety of your dogs and utility employees in your area, you can help prevent potential incidents and contribute to a safer working environment for everyone involved.



For power outages, emergency power troubles and service requests, contact the distribution system operator for
FENN REA: **ATCO Electric**
Phone toll-free: 1-800-668-2248

FENN REA
Box 31, Fenn, Alberta T0J 1K0
Phone: c/o Philip Jarmin,
1-403-740-9384
Email: fennrea@gmail.com
www.fennrea.com

Battle River Power Coop
Member Care & Billing
Box 1420, Camrose AB T4V 1X3
Phone toll-free: 1-877-428-3972
Email: brpc@brpower.coop
www.brpower.coop



Update Your Contact Information!

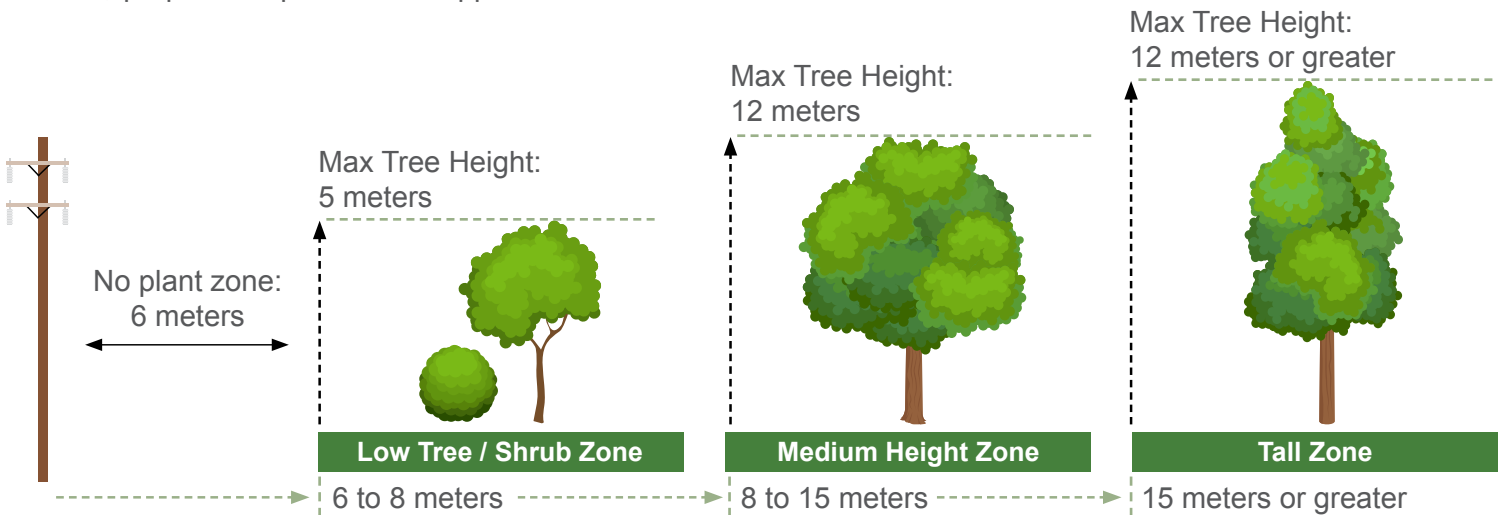
Has anything changed recently? Whether it's your address, phone number, or email, it's important to keep your information up to date. Don't miss out on important updates from Fenn REA!

Simply contact Battle River Power Coop with any changes to your account, and we'll ensure your records are current. Stay connected and informed with Fenn REA.

Know Where To Plant

Knowing where to plant trees around power lines and poles in Alberta is crucial for several reasons. Firstly, it ensures the safety of both the public and power infrastructure by preventing potential hazards such as outages and fires caused by contact between trees and lines. Secondly, strategic tree planting helps maintain reliable electricity transmission, reducing the frequency of service disruptions. Moreover, proper tree placement supports environmental

sustainability by minimizing the need for tree trimming, which can disrupt ecosystems and aesthetics. Ultimately, this awareness fosters a harmonious balance between nature and infrastructure, benefiting communities and ecosystems alike.



Regulated Rate Option (RRO)

The RRO rate may increase or decrease from month to month as it is priced on the open market and subject to many factors relating to supply and demand. If you do not have a contract with an electricity retailer, then you receive the default RRO rate.

For April 2024, the RRO is priced at \$0.11050 per kWh, which is reflected on your enclosed bill. For May 2024, the Battle River Power Coop monthly RRO billing rate for FENN REA members is \$0.09958. The RRO rate is also listed on www.fennrea.com.

Members are free to purchase natural gas services or electricity services from a retailer of their choice. For a list of retailers, visit ucahelps.alberta.ca or call 310-4822 (toll free in Alberta).