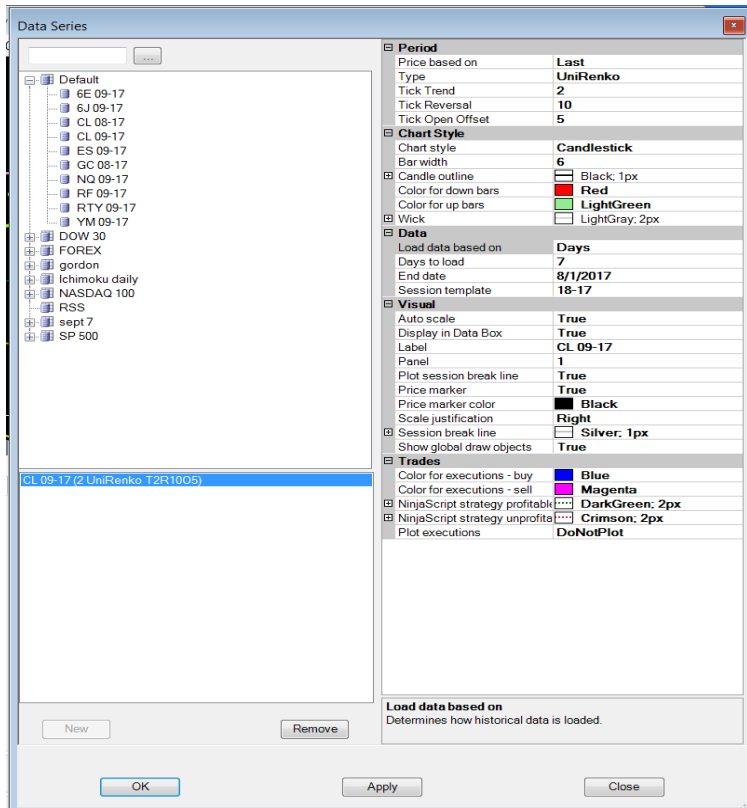
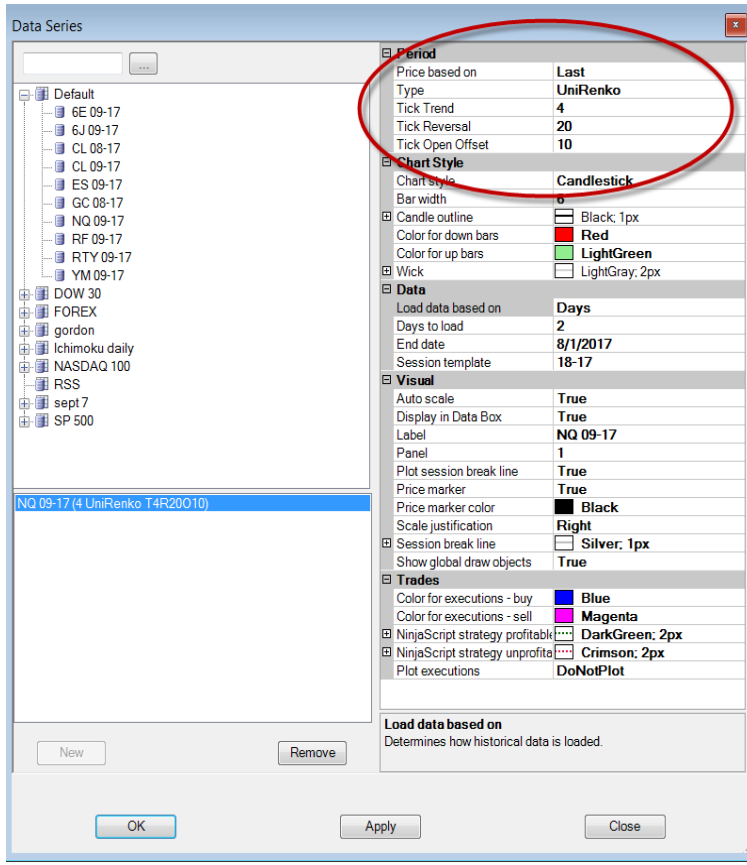


Renko settings for Ninja and Sierra

Ninja NQ uni Renko settings



uni Renko settings for CL, ES, 6e, 6j

Ninja Super Trend Stop settings

The screenshot shows the 'Indicators' dialog box with the 'EZ_SuperTrend' indicator selected. The settings are as follows:

Section	Property	Value
Options	Baseline smoothing	EMA
	Offset smoothing	Default
	Offset type	True_Range
	Reverse intra-bar	False
Parameters	Baseline period	2
	Offset multiplier	1.5
	Offset period	2
Data	Calculate on bar close	False
	Input series	NQ 09-17 (4 UniRenko T
	Maximum bars look ba	TwoHundredFiftySix
Visual	Auto scale	True
	Displacement	0
	Display in Data Box	True
	Label	
	Panel	Same as input series
	Price marker(s)	True
	Scale justification	Right
Display and Sound Options	Show arrows	False
	Show paintbars	False
	Show stop line	True
	Sound alert active	False
Plot Colors	Downtrend	LemonChiffon
	Uptrend	Violet
Plot Parameters	Dash style stop dots	Dot
	Dash style stop line	Dash
	Plot style stop dots	Hash
	Plot style stop line	Hash
	Upclose opacity	3
	Width stop dots	3
Sound Alerts	Width stop line	3
	New downtrend	
	New uptrend	
	Potential downtrend	
	Potential uptrend	
Rearm time (sec)	30	

Additional settings visible in the dialog:

- Label: SuperTrend
- Buttons: New, Remove, OK, Apply, Close

Ninja small super Trend Stop settings

same on all instruments

Sierra Charts Settings

NQ Flex Renko settings

Chart Settings - NQu7 Flex Renko 10-4-3-x #2 - E-Mini Nasdaq 100 - GLOBEX

Main Settings | Advanced Settings | Advanced Settings 2 | **Advanced Settings 3** | Alerts

Date Range In File (yyyy-mm-dd):
From: 2016-12-08 To: 2017-08-01

Use Number Of Days To Load
Days To Load: 30
 Adjust Proportional With Bar Period
Market Depth: 10

Use Date Range
From: To:

Price Display Format: .01
Tick Size: 0.250000
 Auto-Set From Data Feed

Volume at Price Mult.: 1

Symbol: NQu7 Find

Trade and Current Quote Symbol: Find

Chart Data Type: Intraday Chart

Intraday Chart Bar Period:
Bar Period Type: Flex Renko (BarSize-TrendOff-RevOf)
10-4-3 Fill Session Gap

New Bar When Exceeded

Session Times (HH:MM:SS):
Start Time: 00:00:00
End Time: 23:59:59
 Use Evening Session
Evening Start: 00:00:00
Evening End: 23:59:59

New Bar At Session Start
Load All Weekend Data

Automatically Rollover Futures Symbol
 Save Days to Load, Intraday Bar Period, Graph Draw Type as Default

Historical Chart Bar Period:
 Days: 1
 Weekly
 Monthly
 Quarterly
 Yearly

Graph Draw Type:
Bid Ask Volume Bars
Price Volume Bars
Candle Price Volume Bars
Candle Price Volume Bars Hollow
Renko Brick
Renko Brick with Wicks

Scale

Apply Global Symbol Settings

Edit Global Symbol Settings

OK Cancel Apply Help

6e Flex Renko Settings

Chart Settings - 6EU7 Flex Renko 7-4-3-x #1 - Euro / US Dollar - CME

Main Settings | Advanced Settings | Advanced Settings 2 | **Advanced Settings 3** | Alerts

Date Range In File (yyyy-mm-dd):
From: 2016-12-15 To: 2017-08-01

Use Number Of Days To Load
Days To Load: 30
 Adjust Proportional With Bar Period
Market Depth: 10

Use Date Range
From: To:

Price Display Format: .00001
Tick Size: 0.000050
 Auto-Set From Data Feed

Volume at Price Mult.: 1

Symbol: 6EU7 Find

Trade and Current Quote Symbol: Find

Chart Data Type: Intraday Chart

Intraday Chart Bar Period:
Bar Period Type: Flex Renko (BarSize-TrendOff-RevOf)
7-4-3 Fill Session Gap

New Bar When Exceeded

Session Times (HH:MM:SS):
Start Time: 00:00:00
End Time: 23:59:59
 Use Evening Session
Evening Start: 00:00:00
Evening End: 23:59:59

New Bar At Session Start
Load All Weekend Data

Automatically Rollover Futures Symbol
 Save Days to Load, Intraday Bar Period, Graph Draw Type as Default

Historical Chart Bar Period:
 Days: 1
 Weekly
 Monthly
 Quarterly
 Yearly

Graph Draw Type:
Bid Ask Volume Bars
Price Volume Bars
Candle Price Volume Bars
Candle Price Volume Bars Hollow
Renko Brick
Renko Brick with Wicks

Scale

Apply Global Symbol Settings

Edit Global Symbol Settings

OK Cancel Apply Help

CI Flex Renko settings

Chart Settings - 6EU7 Flex Renko 7-4-3-x #1 - Euro / US Dollar - CME

Main Settings | Advanced Settings | Advanced Settings 2 | Advanced Settings 3 | Alerts

Date Range In File (yyyy-mm-dd):
From: 2016-12-15 To: 2017-08-01

Use Number Of Days To Load
Days To Load: 30 Market Depth: 10
 Adjust Proportional With Bar Period

Use Date Range
From: To:

Price Display Format: .00001
Tick Size: 0.000050
 Auto-Set From Data Feed

Volume at Price Mult.: 1

Symbol: 6EU7 Find
Trade and Current Quote Symbol: Find

Chart Data Type: Intraday Chart

Intraday Chart Bar Period:
Bar Period Type: Flex Renko (BarSize-TrendOff-RevOf)
7-4-3 Fill Session Gap
 New Bar When Exceeded

Session Times (HH:MM:SS):
Start Time: 00:00:00
End Time: 23:59:59
 Use Evening Session
Evening Start: 00:00:00
Evening End: 23:59:59
 New Bar At Session Start
Load All Weekend Data

Automatically Rollover Futures Symbol
 Save Days to Load, Intraday Bar Period, Graph Draw Type as Default

Historical Chart Bar Period:
 Days: 1
 Weekly
 Monthly
 Quarterly
 Yearly

Graph Draw Type:
Bid Ask Volume Bars
Price Volume Bars
Candle Price Volume Bars
Candle Price Volume Bars Hollow
Renko Brick
Renko Brick with Wicks

Scale
Apply Global Symbol Settings
Edit Global Symbol Settings

OK Cancel Apply Help

ES Flex Renko Settings

Chart Settings - CLU7 Flex Renko 7-4-3-x #3 - Light Sweet Crude Oil Futures - NYMEX

Main Settings | Advanced Settings | Advanced Settings 2 | Advanced Settings 3 | Alerts

Date Range In File (yyyy-mm-dd):
From: 2017-01-13 To: 2017-08-01

Use Number Of Days To Load
Days To Load: 30 Market Depth: 10
 Adjust Proportional With Bar Period

Use Date Range
From: To:

Price Display Format: .01
Tick Size: 0.010000
 Auto-Set From Data Feed

Volume at Price Mult.: 1

Symbol: CLU7 Find
Trade and Current Quote Symbol: Find

Chart Data Type: Intraday Chart

Intraday Chart Bar Period:
Bar Period Type: Flex Renko (BarSize-TrendOff-RevOf)
7-4-3 Fill Session Gap
 New Bar When Exceeded

Session Times (HH:MM:SS):
Start Time: 00:00:00
End Time: 23:59:59
 Use Evening Session
Evening Start: 00:00:00
Evening End: 23:59:59
 New Bar At Session Start
Load All Weekend Data

Automatically Rollover Futures Symbol
 Save Days to Load, Intraday Bar Period, Graph Draw Type as Default

Historical Chart Bar Period:
 Days: 1
 Weekly
 Monthly
 Quarterly
 Yearly

Graph Draw Type:
Bid Ask Volume Bars
Price Volume Bars
Candle Price Volume Bars
Candle Price Volume Bars Hollow
Renko Brick
Renko Brick with Wicks

Scale
Apply Global Symbol Settings
Edit Global Symbol Settings

OK Cancel Apply Help

Sierra Super Trend Settings

NQ Super Trend Settings

Chart Studies for: NQu7 Flex Renko 10-4-3-x #2

Studies Available:

- Study Subgraph Standard Deviation
- Study Subgraph Subtract
- Study Subgraphs Add
- Study Subgraphs Average
- Study Subgraphs Difference
- Study Subgraphs Multiply
- Study Subgraphs Ratio
- Study Subgraphs Reference
- Study/Price Overlay
- Sum (Bar)
- Sum All Charts
- Sum All Charts (Bar)
- Sum Charts From List
- Summation
- Summation - Periodic
- Summation of Study Subgraph - Periodic
- SuperTrend Stop**

Settings and Inputs | Subgraphs | Alerts

Standard Precedence

Based On: <Main Price Graph>

Short Name:

Chart Region: 1 Scale

Value Format: .01

Display As Main Price Graph

Hide Study

Draw Study Underneath Main Price Graph

Protect with Password

DLLName.FunctionName
SierraChartStudies.scs

Input Name	Input Value
ATR Multiplier (In:1)	1.5
ATR Period (In:2)	3
Median Period (In:3)	3

Sierra charts Super Trend NQ settings

Input
Select an input in the list above

OK Cancel Apply Help Description Reset Defaults

Save these settings as the default

6e Super Trend Settings

Study Settings: SuperTrend Stop. ID: 1

Settings and Inputs | Subgraphs | Alerts

Standard Precedence

Based On: <Main Price Graph>

Short Name:

Chart Region: 1 Scale

Value Format: .00001

Display As Main Price Graph

Hide Study

Draw Study Underneath Main Price Graph

Protect with Password

DLLName.FunctionName
SierraChartStudies.scs

Input Name	Input Value
ATR Multiplier (In:1)	1.5
ATR Period (In:2)	2
Median Period (In:3)	2

Sierra Super Trend Stop 6e

Input
Select an input in the list above

OK Cancel Apply Help Description Reset Defaults

Save these settings as the default

CI Super Trend Settings

Chart Studies for: CLU7 Flex Renko 7-4-3-x #3

Studies Available:

- Study Subgraph Standard Deviation
- Study Subgraph Subtract
- Study Subgraphs Add
- Study Subgraphs Average
- Study Subgraphs Difference
- Study Subgraphs Multiply
- Study Subgraphs Ratio
- Study Subgraphs Reference
- Study/Price Overlay
- Sum (Bar)
- Sum All Charts
- Sum All Charts (Bar)
- Sum Charts From List
- Summation
- Summation - Periodic
- Summation of Study Subgraph - Periodic
- SuperTrend Stop**

Settings and Inputs | Subgraphs | Alerts

Standard Precedence

Based On: <Main Price Graph>

Short Name:

Chart Region: 1 Scale

Value Format: .01

Display As Main Price Graph

Hide Study

Draw Study Underneath Main Price Graph

Protect with Password

DLLName.FunctionName
SierraChartStudies.scs

Input Name	Input Value
ATR Multiplier (In:1)	1.5
ATR Period (In:2)	2
Median Period (In:3)	3

Sierra chart Super Trend setting CL

Input
Select an input in the list above

OK Cancel Apply Help Description Reset Defaults

Save these settings as the default

23:32 11:26:28 11:29:4 Tue 2017-08-01 11:36:16.001 :01 12:08:50 13:16:12 16 L

ES super Trend Settings

Chart Studies for: ESU7 Flex Renko 7-4-3 #4

Studies Available:

- Study Subgraph Standard Deviation
- Study Subgraph Subtract
- Study Subgraphs Add
- Study Subgraphs Average
- Study Subgraphs Difference
- Study Subgraphs Multiply
- Study Subgraphs Ratio
- Study Subgraphs Reference
- Study/Price Overlay
- Sum (Bar)
- Sum All Charts
- Sum All Charts (Bar)
- Sum Charts From List
- Summation
- Summation - Periodic
- Summation of Study Subgraph - Periodic
- SuperTrend Stop**

Settings and Inputs | Subgraphs | Alerts

Standard Precedence

Based On: <Main Price Graph>

Short Name:

Chart Region: 1 Scale

Value Format: .01

Display As Main Price Graph

Hide Study

Draw Study Underneath Main Price Graph

Protect with Password

DLLName.FunctionName
SierraChartStudies.scs

Input Name	Input Value
ATR Multiplier (In:1)	1.5
ATR Period (In:2)	2
Median Period (In:3)	2

Input
Select an input in the list above

OK Cancel Apply Help Description Reset Defaults

Save these settings as the default

23:32 11:26:28 11:29:4 Tue 2017-08-01 11:36:16.001 :01 12:08:50 13:16:12 16 L