

Rabbit Anti-IL-12 Alpha Polyclonal: RC0013

Intended Use: For Research Use Only

Description: Interleukin-12 alpha (IL-12A) is also known as Cytotoxic lymphocyte maturation factor 35kDa subunit (CLMF p35), IL-12 subunit p35, or NK cell stimulatory factor chain 1 (NKSF-1). IL-12A is a cytokine that, along with IL12B, forms a disulfide-linked heterodimer interleukin IL-12. IL-12 alpha functions as a regulator of T cell mediated cytotoxicity, interferon-gamma production, lymphocyte proliferation and activation of natural killer cells.

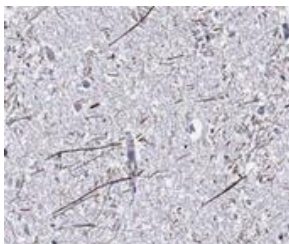
Specifications:

Clone: Polyclonal
Source: Rabbit
Isotype: IgG
Reactivity: Human
Localization: Secreted
Formulation: Purified antibody in PBS buffer pH7.4, containing < 0.09% sodium azide (NaN₃)
Storage: Store at 2°- 8°C
Applications: IHC, WB
Package:

Description	Catalog No.	Size
IL-12 Alpha Concentrated	RC0013	1 ml

IHC Procedure*:

Positive Control Tissue: Tonsil, brain
Concentrated Dilution: 200-400
Pretreatment: Citrate pH6.0, 15 minutes using Pressure Cooker, or 30-60 minutes using water bath at 95°-99°C
Incubation Time and Temp: 30-60 minutes @ RT
Detection: Refer to the detection system manual
* Result should be confirmed by an established diagnostic procedure.



FFPE human tonsil stained with anti-IL-12A using DAB

References:

1. Ginsenoside Rd alleviates mouse acute renal ischemia/reperfusion injury by modulating macrophage phenotype. Ren K, et al. J Ginseng Res 40:196-202, 2016.
2. Contribution of IL-12/IL-35 common subunit p35 to maintaining the testicular immune privilege. Terayama H, et al. PLoS One 9:e96120, 2014.
3. Beneficial effects of Brazilian propolis on type 2 diabetes in ob/ob mice: Possible involvement of immune cells in mesenteric adipose tissue. Kitamura H, et al. Adipocyte 2:227-36, 2013.