

# AIR FORCE SEATING BPA SPIRAL II

Contract # FA800320A0002



4u

design by S.I. Design

**via**  
SEATING

2023



*GREAT JOURNEY WEST, LLC*

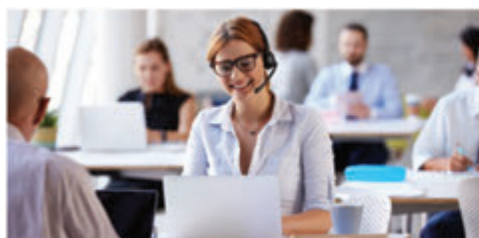


this is true  
quick ship

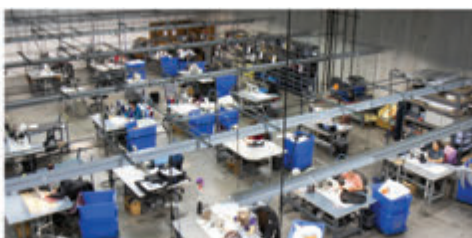
the largest selection of quick-ship in the industry

We don't just have a quick ship program—we're a quick ship company. **Over 95%** of our offerings are quick ship. Compare Via Seating lead times with other quick-ship programs and you'll find we offer the greatest selection of quality seating with the broadest range of options. Our quick ship process is also customized, not prescribed. Our dedicated project experts and customer service team work hand-in-hand with you every step of the way to achieve your project deadlines.

how it works



1 day to process your order.



48 hours (2 days) to build it.



1 day to process & ship it out.

it's that simple



[www.viaseating.com/quick-ship](http://www.viaseating.com/quick-ship)



# Quick Ship Schedule Guidelines

Everything Ships in less than a week!

Day 1 = PO Entered

Day 3 = Production Finishes

Transit time begins

Day 2 = Production Begins

Day 4 = Order Ships Out

Quick Ship Quantities	Task	Multi-Use	ExecuTask & Conference	Lounge
20/48 20 chairs produced in 48 hours	Rise Riva Run II	Reset Vista II		
15/48 15 chairs produced in 48 hours	4u mesh back			
10/48 10 chairs produced in 48 hours	4u upholstered back		Proform® Vero	
5/48 5 chairs produced in 48 hours				
2/48 2 chairs produced in 48 hours				

If more than outlined above, simply double production time I.E. 40/48 would be 1 day to order, 4 days to produce, 1 day to ship.

\*Applicable on standard Quick Ship textiles only, COM time starts once textile is received

\*Must outline Quick Ship on PO

\*Does not include Outdoor products





# Your chair ships 95% assembled

How to assemble your Via Seating chair. No tools required.

Your carton will contain:

**A** Chair Assembly



**B** Gaslift Cylinder



**C** Five Star Base



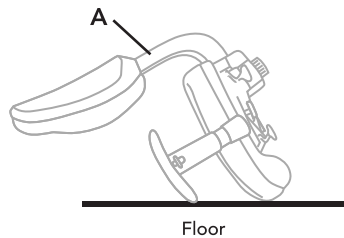
Optional Drafting Stool Kit:

**D** Footring



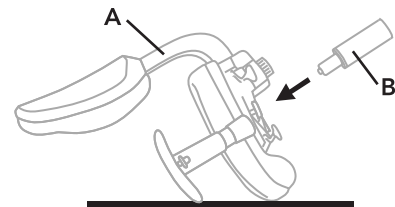
## 1 - Unpack your chair

Remove all components from carton and remove all wrapping. Carefully place the Chair Assembly (A) in an upside down position on the floor.



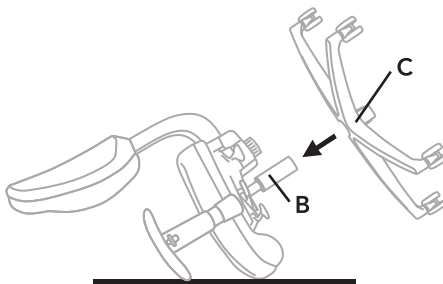
## 2 - Attach Gaslift

Place the small diameter end of the Gaslift Cylinder (B) into the hole in the center of the mechanism located on the bottom of the Chair Assembly (A).



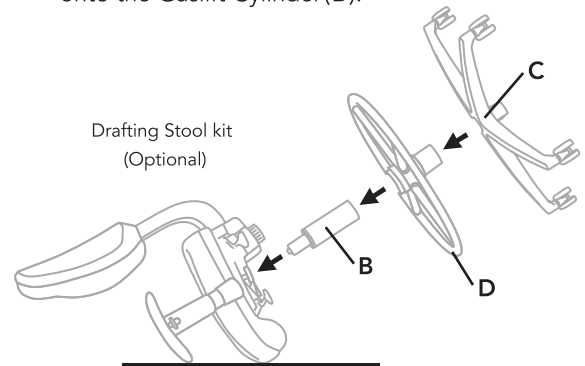
## 3 - Attach Five Star base

Place the Five Star Base (C) onto Gaslift Cylinder (B).



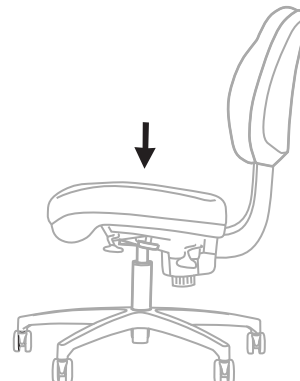
## Optional - Drafting Stool Kit

If a Drafting Stool Kit is ordered, the Footring (D) is applied prior to placing the Five Star Base (C) onto the Gaslift Cylinder (B).



## 4 - Sit in your chair

Carefully return your chair to an upright position. Sit firmly in your chair several times to fully engage the Chair Assembly to the Gaslift Cylinder and Five Star Base.





# proprietary foam technology

Via Seating chairs use closed-cell, cold-cured foam that is injection-molded into strategically contoured seat molds—owned by Via Seating. This proprietary process maximizes on lasting comfort, durability and ergonomic support. Via Seating foam is fully covered under the 12 year warranty.



## injection-molded foam

Via Seating foam is sculpted to provide body balance technology built directly in the cushioning of the seat and back. It is injected into an engineered mold at controlled, differing rates, which creates strategic, multi-density levels within each cushion. This process builds a subtle seat contour that maximizes support exactly where it is needed—where body weight is most concentrated. The outer edges by contrast, are made softer and in a waterfall slope so that the seat does not restrict circulation where the legs extend out over the edge of the seat.



## closed-cell cold-cured technology

**Closed-Cell** refers to the fact that the foam has a smooth outer skin that is kind to fabric. It does not rasp on the upholstery from the inside. The foam does not absorb moisture. It protects the foam over time and does not break down. The comfort of **Via Seating** foam has the same comfort 12 years later.

**Cold-Cured** refers to the consistency in size of the air cells within the foam. The foam is one single, contoured and resilient piece of foam. It is not layered foam.



## expertly tested & durable

Via Seating uses a resistance factor test and measurement of density to assess the durability and quality of its foam.

Density/volume weight gives an indication of the foam's ability to resist weight and not "bottom out". Good foam must provide resistance in direct proportion to the amount of pressure applied. This unit of measurement does not necessarily translate into hardness but rather the feeling of support you receive when you sit on the foam.

Via Seating foam has an average density or volume of **3 pounds per cubic foot** (48 kg/m<sup>3</sup>). Standard flat foam, by comparison, has a single volume weight between 1.9-2.25 pounds per cubic foot (30 to 40 kg/m<sup>3</sup>). The greater density of **Via Seating** foam makes it best-suited for office ergonomic seating.

# Via Copper Mesh®

A biocidal, antifungal, antiviral & anti-odor, self-sanitizing, mesh

Via Seating has developed a unique copper infused mesh by partnering with Cupron, utilizing their copper-based proprietary and patented technology. The copper mesh works by physically embedding an EPA registered copper into the fibers of our Via Seating copper mesh. Through this process, the copper will not wear off like topically applied alternatives. The result is a self-sanitizing, copper-infused mesh that has strong biocidal, antifungal, and antiviral properties.

---

## the copper mesh collection



4u  
task/work chairs & stools



Reset  
nesting chairs



Vista II  
chairs & bar stools



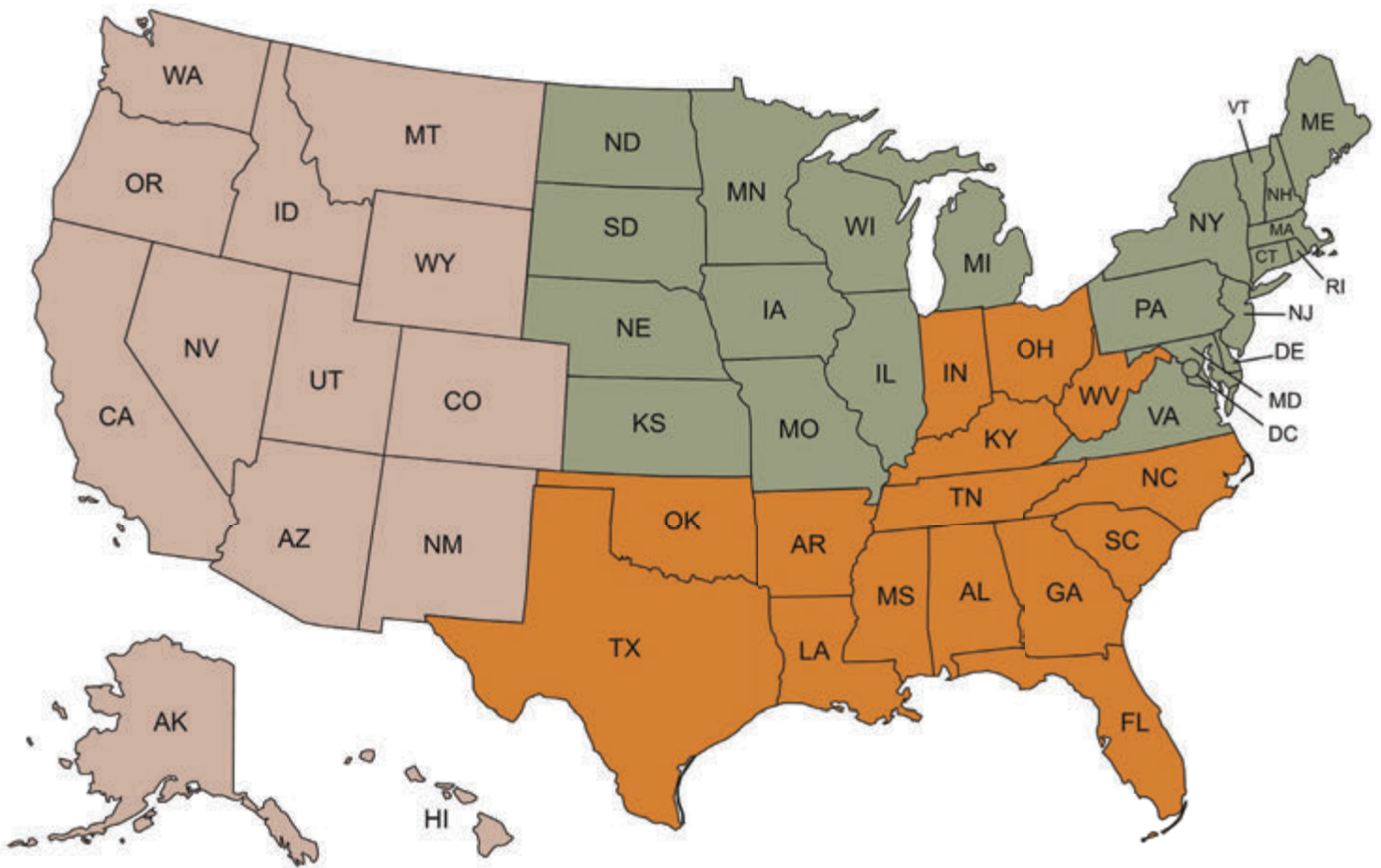
Run II  
task/work chairs & stools



great things happen in a chair

# CAS Support Map

Have a question? Need support? We are happy to help! Look below to find your dedicated support and call or email us now. You can also explore our online resources here: <https://viaseating.com/professional-resources/>



Western Client Accounts  
Nicole Bice

Western U.S., Mexico,  
South America, Canada  
775-398-3306  
[CSWest@viaseating.com](mailto:CSWest@viaseating.com)



Southern Client Accounts  
Eileen Martin

Southern U.S., Canada  
775-398-3328  
[CSSouth@viaseating.com](mailto:CSSouth@viaseating.com)



Northern Client Accounts  
Jenny Mulliner

Northern U.S., Canada  
775-398-3327  
[CSNorth@viaseating.com](mailto:CSNorth@viaseating.com)

Warranty: <https://viaseating.com/warranty/>



## Riva 3403 Series | EX.UU

Riva is an intensive and hardworking seating series. Combined with comfort foam, 6D arm adjustments, and latest quick adjust advanced synchro control, make it a great choice.

### FEATURES



#### Model Number:

3403-67C-51A-20R-18BB-16HP-9FA

### A. FRAME

Standard black finish frame featuring an upholstered back with built in lumbar support

Upholstered standard waterfall seat with *Comfort Foam* offering extra height in the cushioning of the seat. Maximizes comfort and support where needed, promotes circulation, and relieves pressure points

### B. MECHANISM 67C

Quick adjust advanced synchro control mechanism with pneumatic height adjustment (5" range), 5-position tilt limiter, and back tension control

Watch Via's online user guide:

<https://www.youtube.com/watch?v=ql36MaXzO8w>

### C. 6D ARMS & ARMRESTS

Black preferred polyurethane height (3.5") adjustable arms and pivoting armrests with a range of 30 degree rotation (15 degrees inward/outward) and 1.5" depth adjustment (front/back) for comfort and durability

### D. BASE & CASTERS

5-prong/star glass reinforced nylon 360 swivel low profile base with 3" black dual wheel casters

### E. TESTING & ENVIRONMENTAL

ANSI/BIFMA X5.1

California Technical Bulletin 117

ANSI/BIFMA e3-2019 Furniture Sustainability

Standard Level 2 and Clean Air Gold

RATED FOR



### DIMENSIONS

Overall Width	27"
Overall Depth	26"
Overall Height	37.5" - 42.5"
Seat Width	19.5"
Back Width	17"

Back Height	23"
Arm Width	26"
Arm Height	8.5" - 12"
Seat Height	16" - 21"
Seat Depth	18"



## Vero 875 Series | EX.LL

Designed by Italian designers Orlandini Design, Vero delivers a statement piece perfect for executive, conference, and management needs.

### FEATURES



**Model Number:**  
875-F-67C-51A-20R-18BB-16HP-9FA

### A. FRAME

Standard black finish frame featuring an upholstered back with built in lumbar support, and integrated headrest

Upholstered enhanced comfort waterfall seat with *Comfort Foam* offering extra height in the cushioning of the seat. Maximizes comfort and support where needed, promotes circulation, and relieves pressure points

### B. MECHANISM 67C

Quick adjust advanced synchro control mechanism with pneumatic height adjustment (5" range), 5-position tilt limiter, and back tension control

Watch Via's online user guide:

<https://www.youtube.com/watch?v=ql36MaXzO8w>

### C. 6D ARMS & ARMRESTS

Black preferred polyurethane height (3.5") adjustable arms and pivoting armrests with a range of 30 degree rotation (15 degrees inward/outward) and 1.5" depth adjustment (front/back) for comfort and durability

### D. BASE & CASTERS

5-prong/star glass reinforced nylon 360 swivel low profile base with 3" black dual wheel casters

### E. TESTING & ENVIRONMENTAL

ANSI/BIFMA X5.1

California Technical Bulletin 117

ANSI/BIFMA e3-2019 Furniture Sustainability  
Standard Level 2 and Clean Air Gold

RATED FOR



### MODEL OPTIONS



875 Series  
Fixed Arms



873 Series  
Mid Back

### DIMENSIONS

Overall Width	26.5"	Back Height	27"
Overall Depth	26.5"	Arm Width	26.5"
Overall Height	42" - 46.5"	Arm Height	8.5" - 12"
Seat Width	21"	Seat Height	16.5" - 21"
Back Width	19.5"	Seat Depth	16.5"

## Run II 971 Series | T.MU

Run II is economically priced offering with all the functionality of a complete ergonomic task chair that doesn't compromise on anything.

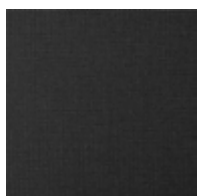
### FEATURES



#### Model Number:

971-B-65C-51A20R-19AB-18BB-16HP-LR2-1R-9FA

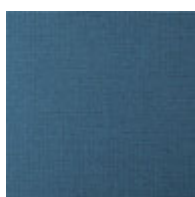
### MODEL OPTIONS



01R  
Black Mesh



02R  
Grey Mesh



03R  
Blue Mesh

### A. FRAME

Standard black finish, black 4-way stretch, elastomeric high-performance mesh back with vertical adjustable lumbar support

Upholstered standard medium waterfall seat with *Comfort Foam* offering extra height in the cushioning of the seat. Maximizes comfort and support where needed, promotes circulation, and relieves pressure points

### B. MECHANISM 65C

Full function ergonomic synchro control mechanism with pneumatic height adjustment (5" range), easy to use side back tension adjustment, tilt lock, and seat slider allowing greater depth (2.5" range) for users requiring more leg support

<https://www.youtube.com/watch?v=JXBAZPVbl3E>

### C. 8D ARMS & ARMRESTS

Black preferred polyurethane height (3.5") | width (2") adjustable arms and pivoting armrests with a range of 30 degree rotation (15 degrees inward/outward) and 1.5" depth adjustment (front/back) for comfort and durability

### D. BASE & CASTERS

5-prong/star glass reinforced nylon 360 swivel low profile base with 3" black dual wheel casters

### F. TESTING & ENVIRONMENTAL

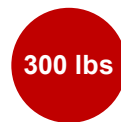
ANSI/BIFMA X5.1

California Technical Bulletin 117

ANSI/BIFMA e3-2019 Furniture Sustainability

Standard Level 2 and Clean Air Gold

RATED FOR



### DIMENSIONS

Overall Width	27"	Back Height	21"
Overall Depth	27"	Arm Width	25 - 29"
Overall Height	35.5" - 40.5"	Arm Height	8" - 11.5"
Seat Width	20.5"	Seat Height	16" - 21"
Back Width	18"	Seat Depth	16.5" - 18.5"

## 4u 772 Series | T.UU

Designed by S.I. Design, 4u's flowing sleek lines add to the ambiance of sophistication in any environment while also providing incredible ergonomics, comfort, and functionality.

### FEATURES



**Model Number:**  
772-B-67C-SS-FT-51A20R-19AB-18BB-16HP-9FA

### MODEL OPTIONS



782 Series  
Mesh Back  
Black Trim

782 Series  
Mesh Back  
Chrome Trim

### A. FRAME

Standard black finish frame featuring an upholstered back with integrated adjustable lumbar support

Upholstered enhanced comfort waterfall seat with *Comfort Foam* offering extra height in the cushioning of the seat. Maximizes comfort and support where needed, promotes circulation, and relieves pressure points

### B. MECHANISM 67C-SS-FT

Quick adjust advanced synchro control mechanism with pneumatic height adjustment (5" range), 5-position tilt limiter, forward tilt (3 degrees), back lock, and back tension control

Integrated seat slider with 2.5" range allowing greater depth for users requiring more leg support

Watch Via's online user guide:

<https://www.youtube.com/watch?v=MrIJ9IO0hRI>

### C. 8D ARMS & ARMRESTS

Black preferred polyurethane height (3.5") | width (2") adjustable arms and pivoting armrests with a range of 30 degree rotation (15 degrees inward/outward) and 1.5" depth adjustment (front/back) for comfort and durability

### D. BASE & CASTERS

5-prong/star glass reinforced nylon 360 swivel low profile base with 3" black dual wheel casters

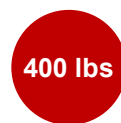
### E. TESTING & ENVIRONMENTAL

ANSI/BIFMA X5.1

California Technical Bulletin 117

ANSI/BIFMA e3-2019 Furniture Sustainability  
Standard Level 2 and Clean Air Gold

RATED FOR



### DIMENSIONS

Overall Width	27"	Back Height	22"
Overall Depth	28"	Arm Width	28" - 32"
Overall Height	36" - 41"	Arm Height	8.5" - 12"
Seat Width	20.5"	Seat Height	16" - 21"
Back Width	21"	Seat Depth	15" - 17.5"

## Rise 222 Series | CR.MU

The beautiful European design cache of Rise offers a very competitive low price point chair that maintains Via's highest standards of quality, durability, comfort, and ergonomics.

### FEATURES



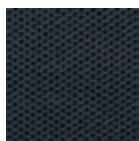
**Model Number:**  
222-CB-55C-22ACB-22CB-14HP-RLM-01AS-01RS-9FA

### MODEL OPTIONS



220 Series  
Convex Seat

#### Mesh Colors



01RS Charcoal Black



02RS Grey



04RS Blue

### A. FRAME

Standard charcoal black finish, black 4-way stretch, elastomeric high-performance mesh back with matching accent back bar and removable lumbar support insert

Upholstered contoured waterfall seat with *Comfort Foam* offering extra height in the cushioning of the seat. Maximizes comfort and support where needed, promotes circulation, and relieves pressure points

### B. MECHANISM 55C

Body Balance Synchro control mechanism with pneumatic height adjustment (3.5" range), 4-position tilt lock, and integrated seat slider (2" range) allowing greater depth for users requiring more leg support

<https://www.youtube.com/watch?v=maUQwRm1Yqc>

### C. 6D ARMS & ARMRESTS

Black height adjustable arm (2" range up/down) with integrated armrests

Pivoting armrests with a range of 30 degree rotation (15 degrees inward/outward) and 2.5" width adjustment (in/out)

### D. BASE & CASTERS

5-prong/star glass reinforced nylon 360 swivel low profile base with 3" black dual wheel casters

### F. TESTING & ENVIRONMENTAL

ANSI/BIFMA X5.1

California Technical Bulletin 117

ANSI/BIFMA e3-2019 Furniture Sustainability Standard Level 2 and Clean Air Gold

RATED FOR



### DIMENSIONS

Overall Width	26.5"	Back Height	22"
Overall Depth	26.5"	Arm Width	24" - 29"
Overall Height	39" - 42.5"	Arm Height	9" - 11"
Seat Width	19.5"	Seat Height	17.5" - 21"
Back Width	20"	Seat Depth	16.5" - 18.5"



## Proform 161 Series | CR.UU

Proform's beautiful slim lines, seductive curves, and designer stitch patterns make it a great choice for a conference room chair.

### FEATURES



**Model Number:**

161-F-67C-51A-20S-18BB-16HP-9FA

### A. FRAME

Standard black finish frame featuring an upholstered back with panel stitch lines and built in lumbar support

Upholstered standard medium waterfall seat with *Comfort Foam* offering extra height in the cushioning of the seat. Maximizes comfort and support where needed, promotes circulation, and relieves pressure points

### B. MECHANISM 67C

Quick adjust advanced synchro control mechanism with pneumatic height adjustment (5" range), 5-position tilt limiter, and back tension control

Watch Via's online user guide:

<https://www.youtube.com/watch?v=ql36MaXzO8w>

### C. 2D ARMS & ARMRESTS

Black preferred polyurethane height adjustable arms and standard fixed armrests for comfort and durability  
Arm range height 3.5" (up/down)

### D. BASE & CASTERS

5-prong/star glass reinforced nylon 360 swivel low profile base with 3" black dual wheel casters

### E. TESTING & ENVIRONMENTAL

ANSI/BIFMA X5.1

California Technical Bulletin 117

ANSI/BIFMA e3-2019 Furniture Sustainability  
Standard Level 2 and Clean Air Gold

RATED FOR



### DIMENSIONS

Overall Width	26.5"	Back Height	21"
Overall Depth	26.5"	Arm Width	28"
Overall Height	35" - 40"	Arm Height	9" - 12.5"
Seat Width	20"	Seat Height	17" - 21.5"
Back Width	20.5"	Seat Depth	17"

## Reset 350 Series | GS.MU

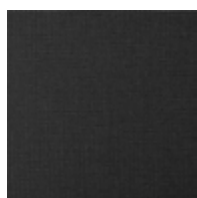
Reset is a nesting and storing chair that provides comfort, versatility, and style to any workplace.

### FEATURES

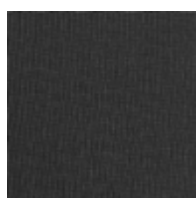


**Model Number:**  
350-B-RA1B-16HP-11RE-FA

### MODEL OPTIONS



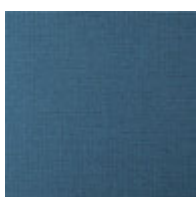
01RE  
Black Mesh



11RE  
Black Copper Mesh



02RE  
Grey Mesh



03RE  
Blue Mesh

### A. FRAME

Lightweight design in standard matte black finish; two piece construction with a metal base and poly nylon ergonomic flexing mesh back reclining 22 degrees

High performance, 4-way stretch, elastomeric patented mesh is infused with self-sanitizing copper that has strong biocidal, antifungal, and antiviral properties

Upholstered waterfall flip seat with *Comfort Foam* offers extra height in the cushioning of the seat. Maximizes comfort and support where needed and promotes circulation and reduce pressure points

### B. ARMS

Integrated fixed sloping cantilever nylon loop arms standard in matte black

Available without arms (0A option)

### C. BASE & CASTERS

4-leg metal base with durable 3" black dual wheel casters

### D. SMART SPACE

Folding seats allow the chair to nest horizontally for a smart storage solution

### E. TESTING & ENVIRONMENTAL

ANSI/BIFMA X5.1

California Technical Bulletin 117

ANSI/BIFMA e3-2019 Furniture Sustainability Standard Level 2 and Clean Air Gold

RATED FOR



### DIMENSIONS

Overall Width	24"	Back Height	19"
Overall Depth	24"	Arm Width	23"
Overall Height	34.5"	Arm Height	9"
Seat Width	18"	Seat Height	18.5"
Back Width	19.5"	Seat Depth	17"

## Vista II 302 Series | GS.UU

Vista II is a generously padded, stackable, multi-use chair suitable for a wide variety of spaces. This series is made of smooth curves and contoured comfort foam waterfall seats.

### FEATURES



#### A. FRAME

Two piece construction, upholstered seat and back, wall saver design, and metal frame in standard black matte finish

Designer cut out shape back assists with movement and allows for easy cleaning

Upholstered waterfall seat with *Comfort Foam* gently slopes to reduce tension and muscle fatigue, promoting good posture, circulation, and reduce pressure points

#### B. ARMS

Integrated fixed sloping polyurethane loop arms standard in matte black

Available without arms (0A option)

#### C. BASE

4-leg metal base with durable standard non-marring glides

#### D. SMART SPACE

Chair stacks vertically 3 high atop one another for a smart storage solution

#### E. TESTING & ENVIRONMENTAL

ANSI/BIFMA X5.1

California Technical Bulletin 117

ANSI/BIFMA e3-2019 Furniture Sustainability Standard Level 2 and Clean Air Gold

**Model Number:**  
302-B-32A-FA-SC

### MODEL OPTIONS



312 Series  
Mesh Back

RATED FOR



### DIMENSIONS

Overall Width	26"	Back Height	17"
Overall Depth	23"	Arm Width	25.5"
Overall Height	33"	Arm Height	8"
Seat Width	19"	Seat Height	19"
Back Width	20.5"	Seat Depth	19"

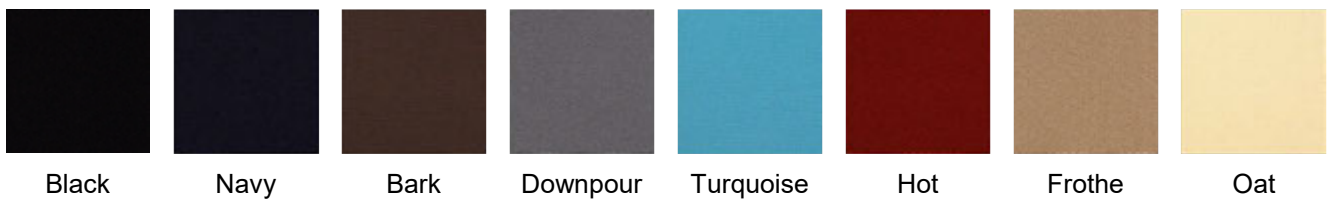
# TEXTILES

## FABRIC

### HUE



### VOX



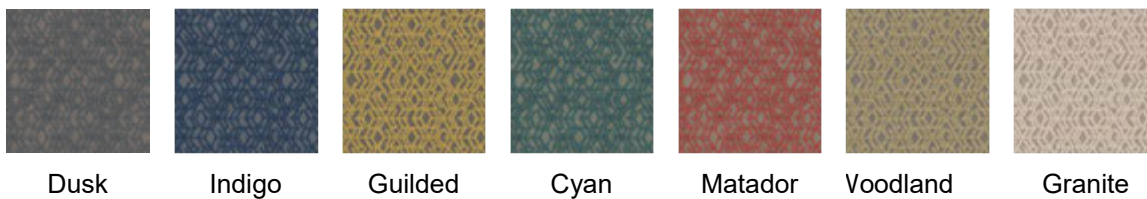
### ACE



### SOUTACHE



### CONNECT



Note: Unless designated as quick ship, all textiles will have 45 days lead time

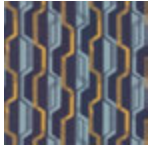
 quick ship



# TEXTILES

## FABRIC

### SWERVE



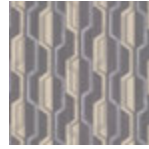
Admiral



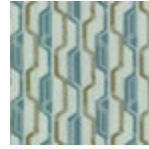
Tidal



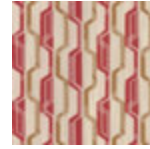
Celtic



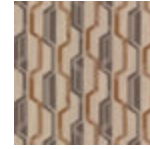
Anchor



Patina



Garnet



Terra



Umber

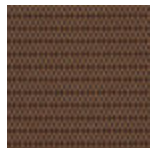
### RISE



Charcoal



Captain



Chestnut



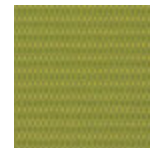
Mist



Turquoise



Scarlet



Linden



Dune

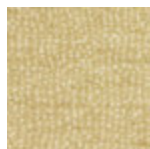
### TWINKLING



Tinsel



Gold Dust



Moonglow



Gilded

## VINYL

### RALLY



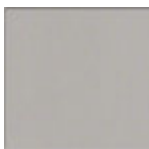
**OS** RAL42 Black



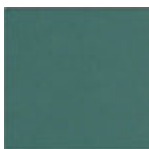
RAL37 Royal



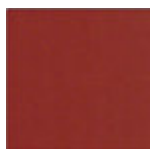
RAL57 Bronze



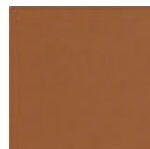
RAL44 Dove



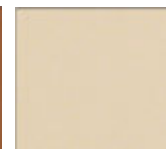
RAL48 Grotto



RAL65 Paprika

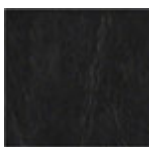


RAL56 Cinnabar



RAL64 Sand

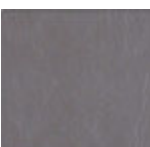
### ROGUE2



RU810 Black



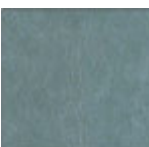
RU890 Tobacco



RU930 Ninja



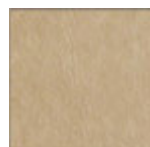
RU910 Turquoise



RU950 Blue Mist



RU980 Poppy



RU880 Fawn



RU870 Off White

Note: Unless designated as quick ship, all textiles will have 45 days lead time

**OS** quick ship

# TEXTILES

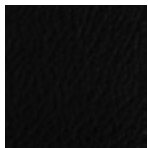
## LEATHER

### VIA LEATHER 5

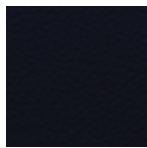


 Black (75)

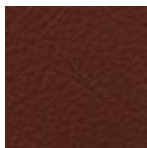
### VIA LEATHERS 6



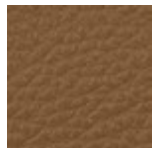
Black (95)



Royal Blue



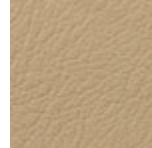
Brown



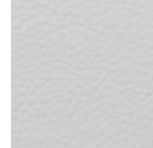
Light Brown



Slate

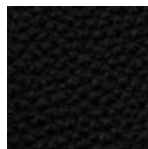


Playa

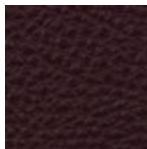


White

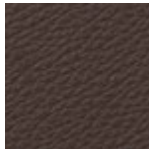
### VIA LEATHERS 8



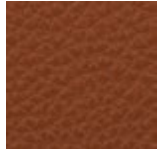
Black (293)



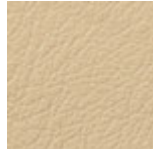
Burgundy



Tobacco

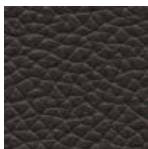


Chestnut

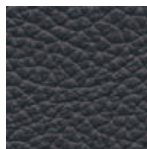


Sand

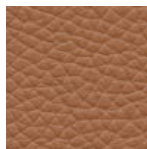
### VOLO



Black



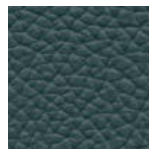
Navy



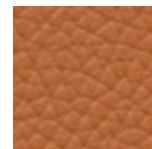
Tan



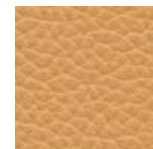
Clay



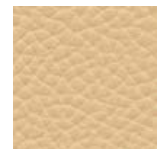
Teal



Ayers Rock

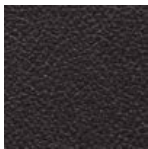


Buff



Vanilla

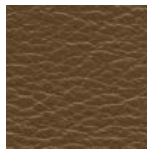
### ALASKA



Grizzly Black



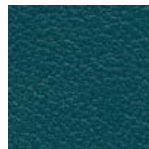
Caldera



Leatherback



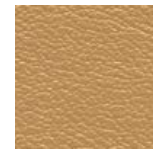
Razor Clam



Fjord



Sitka



Chilkoot



Point Adolphus

Note: Unless designated as quick ship, all textiles will have 45 days lead time

 quick ship

## CONTACT US

Joseph McDonnell  
afbpa@greatjourneywest.com  
joe@greatjourneywest.com  
(314) 478-5792  
www.greatjourneywest.com

Great Journey West is an authorized distributor/reseller of Via Seating products.

All products are backed by  
Via's 12 Year Warranty.

Freight charges apply to orders of 1-5 cartons. Orders of 6 or more cartons, dock to dock shipping is included.

Great Journey West, LLC | TAX ID 45-5582972 | SAM UEI VAGGAYYC5D94 | Cage Code 5VL86



VIA SEATING  
205 VISTA BOULEVARD  
SPARKS, NEVADA 89434  
775-331-6001 | 800-433-6614  
VIASEATING.COM