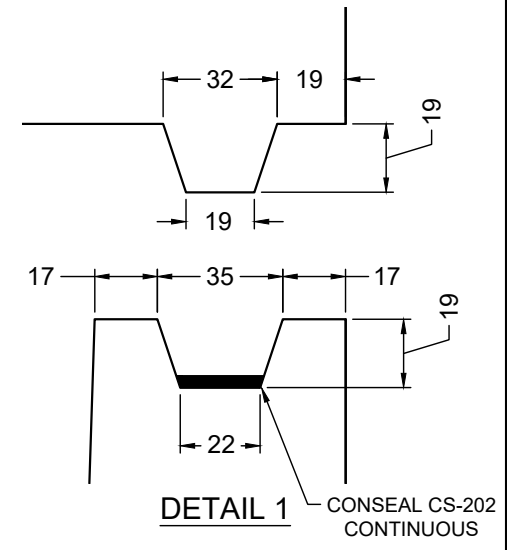
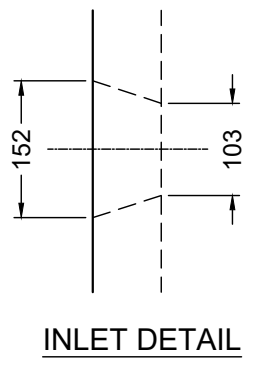
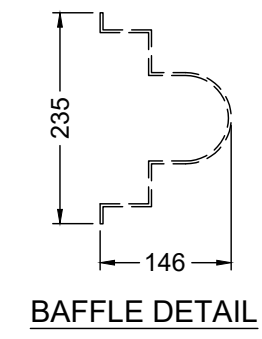
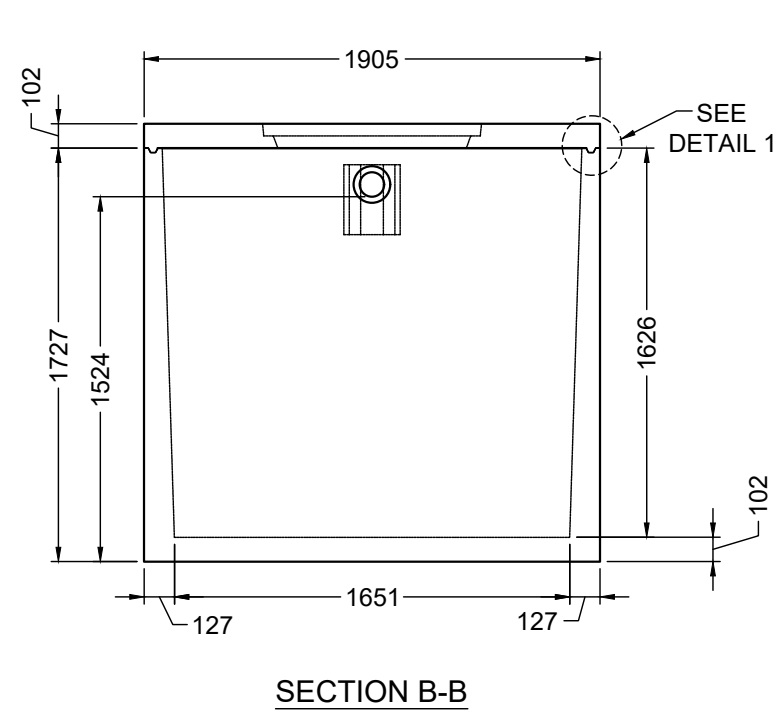
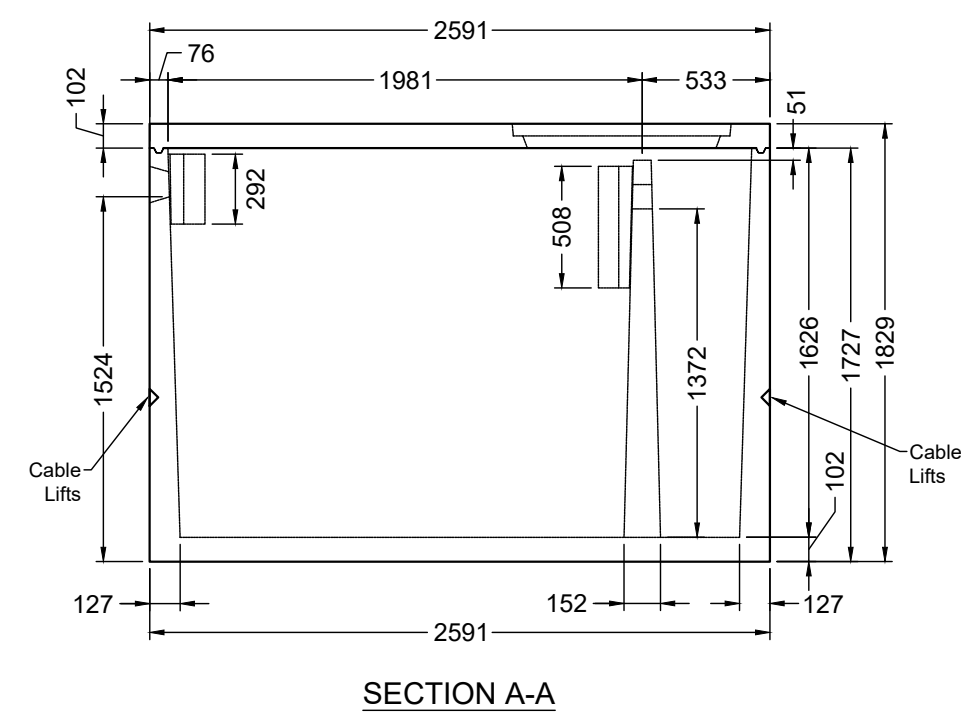
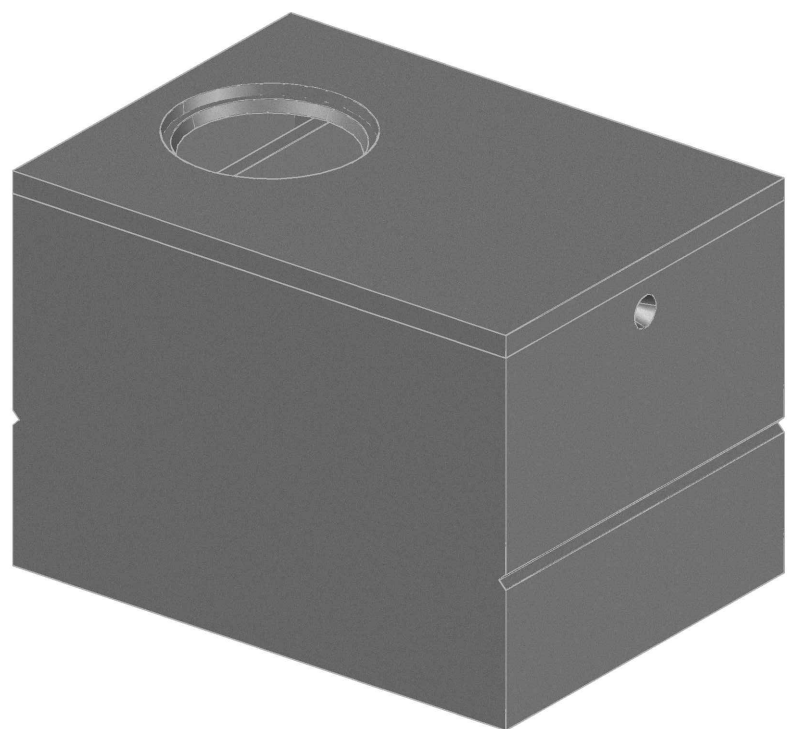
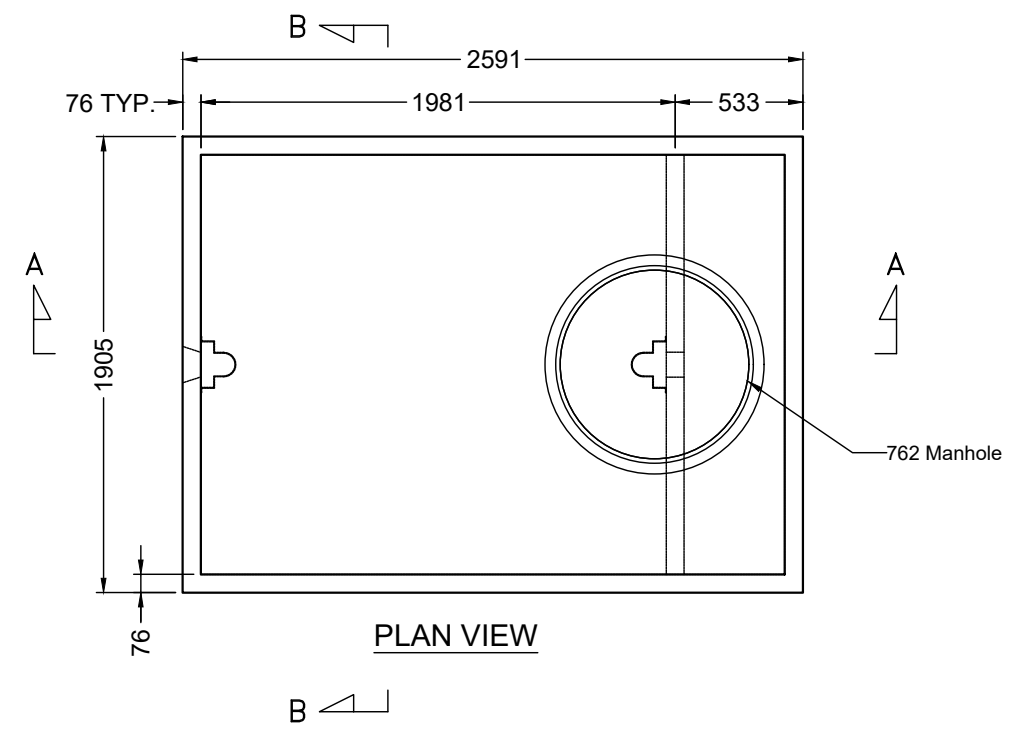


CONCRETE	RELEASE	MPa	20	
	28 DAY:	MPa	35	
	AIR CONTENT:		6% ± 1%	
	WEIGHT: kg	6800	VOLUME m <sup>3</sup>	2.720
	TYPE:		kg/m <sup>3</sup>	2402
STRAND		-	mm	-
		-		-
		-	MPa	-

MARK	DESCRIPTION	QTY.



- NOTES:**
- 1) CEMENT : PORTLAND CEMENT TYPE 50(HS)
  - 2) Max AGGREGATE SIZE: 20mm
  - 3) 28 DAY STRENGTH: MIN. 35 MPa.
  - 4) ENTRAINED AIR: 6%±1%
  - 5) REINFORCING TO CAN/CSA-G30.18 400 MPa
  - 6) ALL UNITS ARE IN MILLIMETERS UNLESS OTHERWISE NOTED.

DWG. NO.	REFERENCE	NO.:	REVISION DESCRIPTION	BY	APP'D	DATE	DRW BY	SWM	2018/11/23
-	-	A	ISSUED PLAN	-	-	2018/11/23	CH'K BY	-	-
-	-	-	-	-	-	-	AP'D BY	-	-
-	-	-	-	-	-	-	AP'D BY	-	-
-	-	-	-	-	-	-	SCALE: NTS	PAGE: 1 OF 1	

**TITLE:** 1200 Gallon Septic Tank DETAIL DRAWING

PROJECT NO.: \_\_\_\_\_ JOB NO.: \_\_\_\_\_

DRAWING NO.: **SVI-ST-1200-01A**