

Protected Exterior Bodyguard® Sidings, S1S2E Trimboards & Exterior Mouldings



ECOLOGICAL AND DURABLE STRUCTURAL PROTECTION



CALIFORNIA FIRE APPROVAL

Bodyguard® has had profiles successfully tested by Western Fire Center Inc., to California State Fire Marshall Regulations.

SIDINGS

Tested in accordance with California State Fire Marshall Regulation 12.7A-1. This approval is for horizontal applications only and requires installation over OSB with a minimum thickness of 7/16".

UNDER EAVES

Tested in accordance with California State Fire Marshall 12.7A-3. This approval is for beaded T&G product (#801BG & #802BG) and must be mounted over a minimum of 1/2" exterior grade gypsum board.

Until now, it's been hard for contractors and homeowners to find genuine wood building solutions they can trust to last, and that look great. Bodyguard® is the original producer of treated FJ Pine products from New Zealand. Protected by an environmentally friendly preservative, Bodyguard® products provide long-lasting life and protection against decay, corrosion and insects. Sourced from the clean, green sustainable pine forests of New Zealand, these products are environmentally safe, easy to use and come with a 30-year warranty.

Sold exclusively through EL & EL Wood Products.



section contents

- Bodyguard® Exterior Primed Millwork.....97
- Bodyguard® Interior / Exterior T&G..... 96
- Bodyguard® Fire Rated Primed FJ Siding... 94
- Bodyguard® Protected Siding..... 93
- Bodyguard® Protected Trimboards 93
- Pakari Trimboards.....100

Bodyguard® Primed FJ Pine

I/E

DESIGN STYLES

TRADITIONAL | CONTEMPORARY | COASTAL

**JANKA
HARDNESS**
(POUNDS-FORCE)

N/A



Natural Wood Solutions For Today's Building Challenges!



SUSTAINABLE - Bodyguard® wood products come from the well-managed pine plantation forests in clean, green New Zealand.



PROTECTED - The unique pressure treatment achieves total "active penetration" protection of the wood. The addition of waxes and resins boosts its water protection properties. The active ingredients used in this treatment process (known as Light Organic Solvent-borne Preservatives (LOSP's)) do not dissolve in water and will not be removed through leaching.



ENVIRONMENTALLY FRIENDLY AND SAFE - The Bodyguard® preservative system is based on carbon based biocides and is registered in the United States of America by the EPA. As Bodyguard® is real wood and contains no hazardous additives it is safe to work with, just follow normal workplace safety practices for handling wood products.



DEFECT FREE - Bodyguard® is a natural wood product manufactured from kiln-dried timber. All defects, such as knots and resin pockets, are removed prior to fingerjointing.



TERMITE RESISTANT - One of the active protective ingredients in Bodyguard® is Permethrin, a food-crop protection product effective against all known species of termite.



FSC CERTIFIED - By buying products with an FSC label you are helping to promote responsible forest management worldwide. Ask for our supply availability of FSC certified products. (SCS-COC-00538 / SCS-COC-004440 / SGS-COC-003178 / RA-COC-005483).



GREEN BUILDING CREDITS - Bodyguard® qualifies for credit points under the following schemes:

- LEED for Homes
- NAHB Model Green Home Building Guidelines
- GreenPoint Rated (California only)



PAINT-READY FINISH - The machined finish of Bodyguard® is enhanced by a two-coat alkyd primer system and comes with a performance warranty. A good-quality acrylic paint system to the manufacturer's specifications will finish the appearance and protection of Bodyguard® perfectly.



SUITABLE FOR USE INSIDE AND OUTSIDE - Bodyguard® is safe for interior and exterior above ground use. We recommend application of finishing coats as soon as practicable after installation. Make sure your Bodyguard® product is dry before painting.



NON-CORROSIVE - The protection system's (LOSP's) do not contain any corrosive heavy metals and will not cause corrosion to nails and other fastening systems. Durable fasteners are recommended as good building practice for exterior applications.



EASE OF USE - No special tools, cutting equipment or fixing methods are required with Bodyguard®.



30 YEAR WARRANTY - A 30-year limited warranty is provided on all Bodyguard® products against termite attack, rot or fungal decay.

PAINTING & INSTALLATION

BODYGUARD® IS PRE-PRIMED (DOUBLE COATED) AND THE FOLLOWING IS RECOMMENDED:

- * Bodyguard products must be painted as soon as practicable after installation.
- * Bodyguard products must be dry before commencing painting (a moisture content of 14% or less).
- * Apply top coat in warm, dry weather not below 50° F.
- * Painting with solid acrylic stains is not recommended as UV light will penetrate the transparent stain and damage the primer paint.
- * We recommend application of the first top coat prior to installation.

1. Nail holes: if nails are countersunk, seal exposed wood with Bodyguard End Seal then fill nail holes with an exterior grade wood filler, then spot prime. In temperatures less than 40°F use cold weather caulking sealants.
2. Remove all soft and chalky paint, dirt, and sand etc. to a smooth even finish.
3. Apply two full coats of premium quality exterior acrylic house paint as per manufacturer's instructions. For best results allow 24hrs between coats.
4. The use of colors with a Light Reflectance Value (LRV) of 45 or more is recommended, as these lighter colors reflect significantly more heat.
5. When cutting or re-machining; brush or spray-on a preservative containing zinc naphthen, Bodyguard End Seal is recommended.
6. **Corrosion resistant fasteners such as hot dipped galvanized nails or stainless steel nails must be used when installing.**
7. All nails should be countersunk and puttied prior to paint.

NOTE: ALL WOOD EXPANDS AND CONTRACTS. It is important to leave 1/8" gap between each piece of siding to allow for expansion. Failure to do so will void warranty and may cause serious issues.



(items are approximate scale only)

Bodyguard® FJ Pine Treated & Protected Siding/ S1S2E Trimboards & Exterior Mouldings



S1S2E TRIMBOARDS

For interior and exterior use. Reversible; rough-sawn on one side, smooth on the other with eased edges. Bodyguard® is manufactured with superior quality and performance in mind.

The result is a product that maintains its appearance and integrity as a uniform and quality building solution. The Bodyguard® product range consists of trimboards, sidings and exterior mouldings in a wide range of profiles and choices.

For homeowners and contractors who prefer the naturalness of wood; who value a durable solution; and who appreciate the confidence shown through a warranty and position. Bodyguard® provides a real wood solution for today's building challenges.



PLEASE REFER TO INSTALLATION AND PAINTING GUIDELINES.

PROTECTED TRIMBOARDS: S1S

Protected S1S2E Trimboards Interior/Exterior Primed FJ Pine			
ITEM	BODYGUARD PART #	SIZE	LENGTHS
1X2S1S	710	3/4 x 1-1/2"	16'
1X3S1S	711	3/4 x 2-1/2"	16' & 20'
1X4S1S	712	3/4 x 3-1/2"	16' & 20'
1X6S1S	714	3/4 x 5-1/2"	16' & 20'
1X8S1S	716	3/4 x 7-1/4"	16' & 20'
1X10S1S	718	3/4 x 9-1/4"	16' & 20'
1X12S1S	720	3/4 x 11-1/4"	16' & 20'
5/4X4S1S	723	1" x 3-1/2"	16' & 20'
5/4X6S1S	724	1" x 5-1/2"	16' & 20'
5/4X8S1S	725	1" x 7-1/4"	16' & 20'
2X2S1S	722	1-1/2 x 1-1/2"	16' & 20'
2X4S1S	713	1-1/2 x 3-1/2"	16' & 20'
2X6S1S	715	1-1/2 x 5-1/2"	16' & 20'
2X8S1S	717	1-1/2 x 7-1/4"	16' & 20'
2X10S1S	719	1-1/2 x 9-1/4"	16' & 20'
2X12S1S	721	1-1/2 x 11-1/4"	16' & 20'

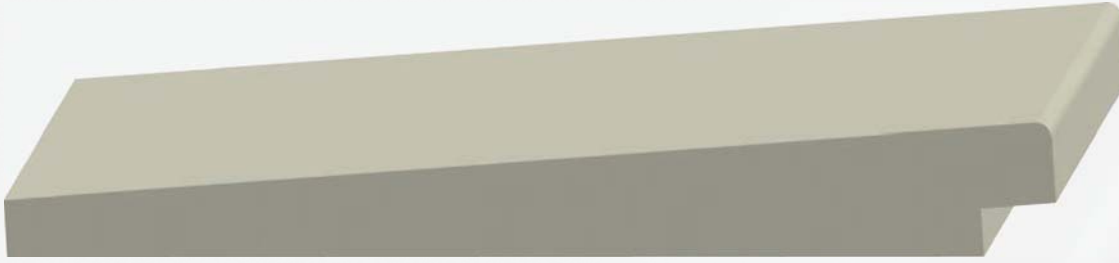
- ✓ Reversible S1S
- ✓ 1side Rough Sewn
- ✓ 1side Smooth
- ✓ 30 Year Limited Warranty

Bodyguard® Fire Rated Primed FJ Siding

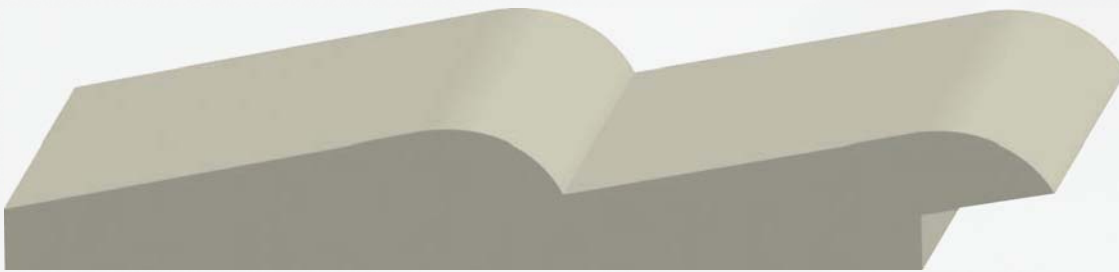
lengths available: all 16" & 20" only with 1/2" overlap

(items are approximate scale only)

CALIFORNIA FIRE APPROVAL



371 1 1/16 x 5-1/2 **Rab't Smooth Face Siding** N/S | **372** 1 1/16 x 7-1/2 **Rab't Smooth Face Siding** N/S



430 3/4 x 5-1/2 **2 Lap Siding** N/S



774 3/4 x 7-1/2 **Bevel Channel Siding** N/S | **773** 3/4 x 9-1/2 **Bevel Channel Siding** N/S



432 3/4 x 7-1/2 **3 Lap Siding** N/S | **433** 3/4 x 9-1/2 **3 Lap Siding** N/S



(items are approximate scale only)
CALIFORNIA FIRE APPROVAL

Bodyguard® Fire Rated Primed FJ Siding

lengths available: all 16' & 20' only with 1/2" overlap



793 3/4 x 5-1/2 **V-Rustic Siding** N/S
794 3/4 x 7-1/2 **V-Rustic Siding** N/S

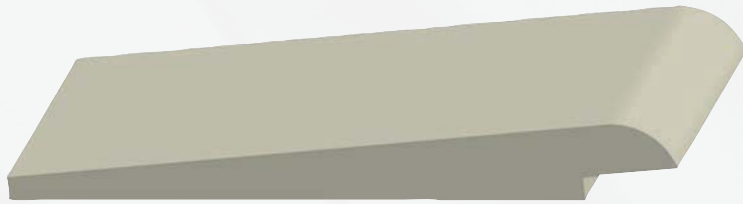
795 3/4 x 9-1/2 **V-Rustic Siding** N/S



771 3/4 x 7-1/2 **Cove Siding** N/S

772 3/4 x 9-1/2 **Cove Siding** N/S

COMING SOON
in early 2018!



1x4BS 1/2 x 4 **#400 Bevel Siding** N/S



1x6NGS 1x6 **Nickel Gap Siding** N/S

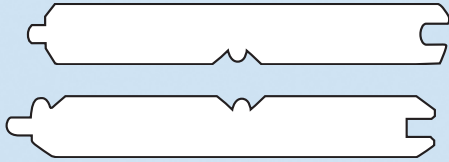
Bodyguard® Interior / Exterior T&G

(items are approximate scale only)

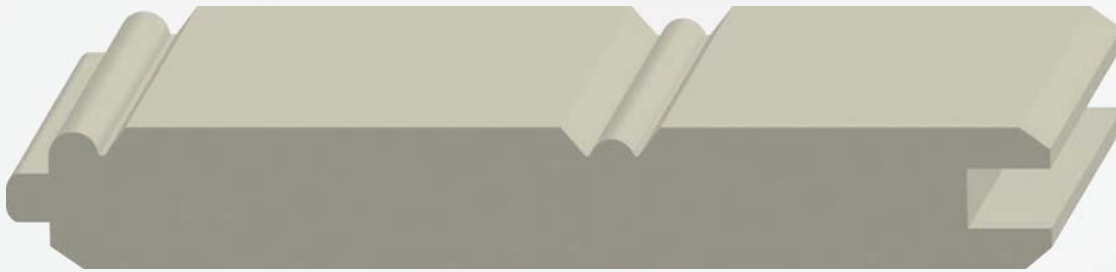
✂ lengths available: all 16'

Protected T&G Bead Boards For Interior and Exterior Use

Smooth Surface, Four Sides. Available in 16' lengths. Reversible: Flat or Beaded



801BG 5/8 x 4 T&G Beaded Wainscot *N/S*
(Exposed face is 3-1/8) [reversible]



802BG 1 x 6 T&G Beaded Wainscot *N/S*
(Exposed face is 5-1/8) [reversible]

Bodyguard® Testing & Approvals

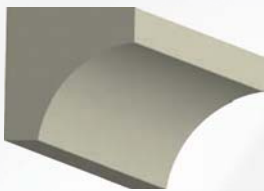
CALIFORNIA FIRE APPROVAL

Bodyguard has had profiles successfully tested by Western Fire Center Inc., to California State Fire Marshall Regulations.

Sidings: Tested in accordance with California State Fire Marshall Regulation 12.7A-1. This approval is for horizontal applications only and requires installation over OSB with a minimum thickness of 7/16".

Under Eaves: Tested in accordance with California State Fire Marshall Regulation 12.7A-3. This approval is for beaded T&G product (#801BG & #802BG) and must be mounted over a minimum of 1/2" exterior grade gypsum board.

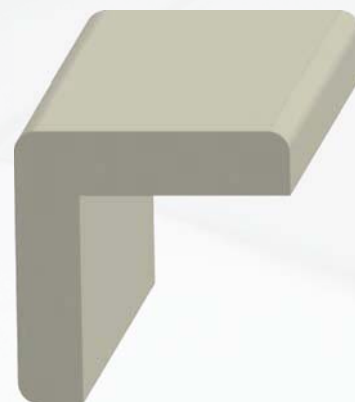
Bodyguard® Exterior Primed & Protected Millwork



606 11/16 x 11/16 x 16'
Cove *N/S*



614 11/16 x 11/16 x 16'
Quarter Round *N/S*



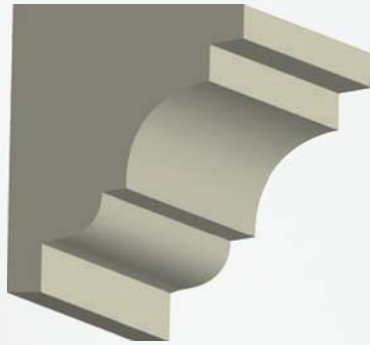
604 1-7/16 x 1-7/16 x 16'
Outside Corner Guard *N/S*

(items are approximate scale only)

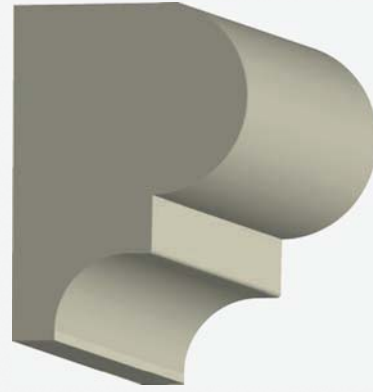
Bodyguard® FJ Pine Exterior Primed & Protected Millwork



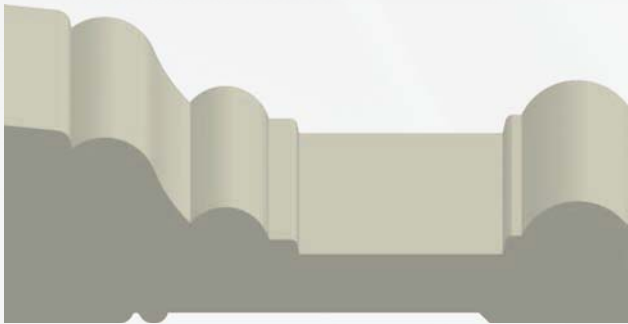
224 9/16 x 3/4 x 16' **Base Cap** N/S



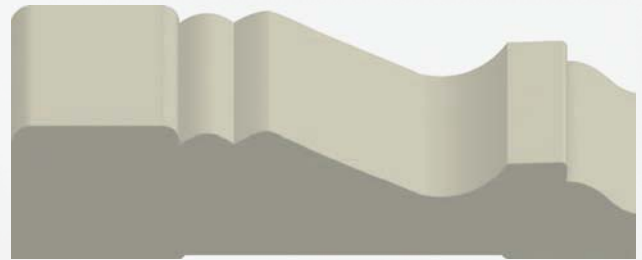
607 1-1/4 x 1-1/2 x 16' **Pediment Crown** N/S



024 1-1/4 x 1-3/4 x 17' **Bead & Nose Coving** N/S



387 1-1/16 x 3-1/4 x 17' **Howe Casing** N/S



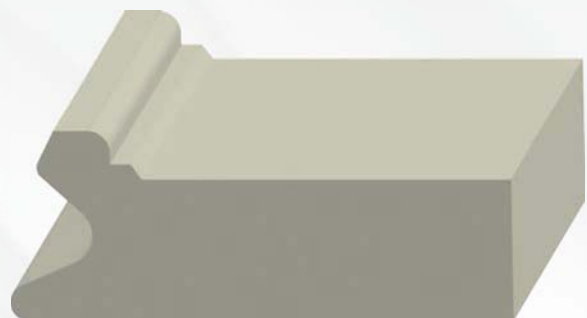
388 11/16 x 3-1/4 x 17' **Carolina Casing** N/S



1400 1-3/16 x 4-1/4 x 17' **Architrave** N/S



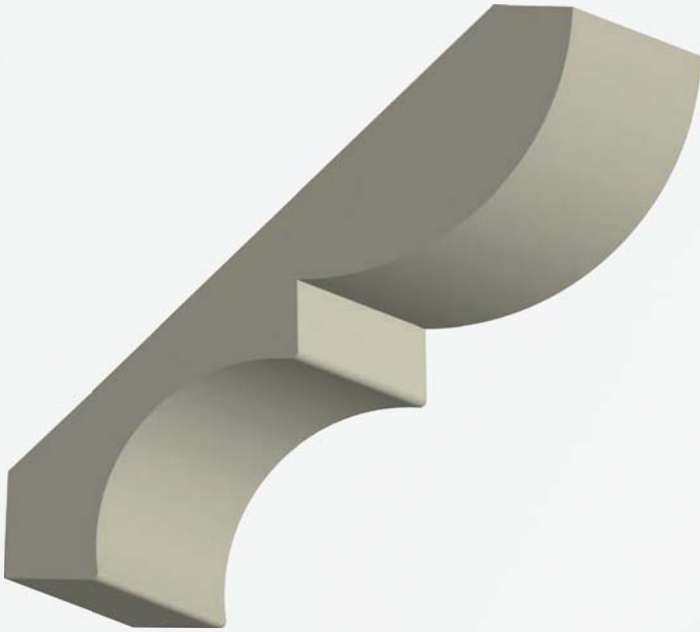
616 11/16 x 1-5/8 **Shingle Mold** N/S
✦ lengths available: 16'



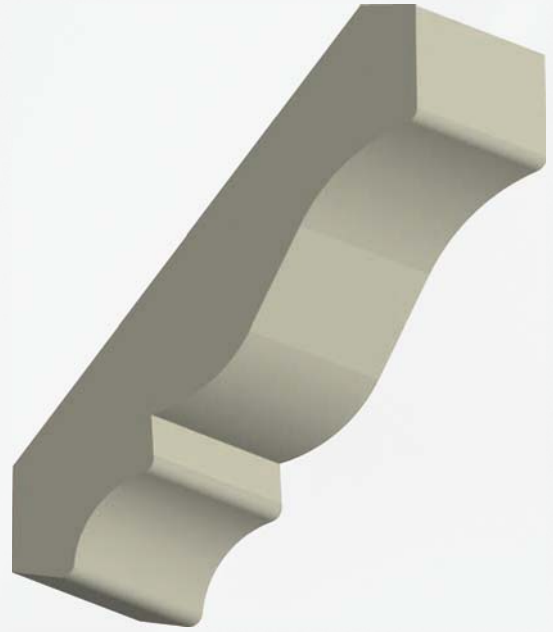
629 1 x 2-5/8 **Stucco Mold** N/S
✦ lengths available: 17'

Bodyguard® Exterior Primed & Protected Millwork

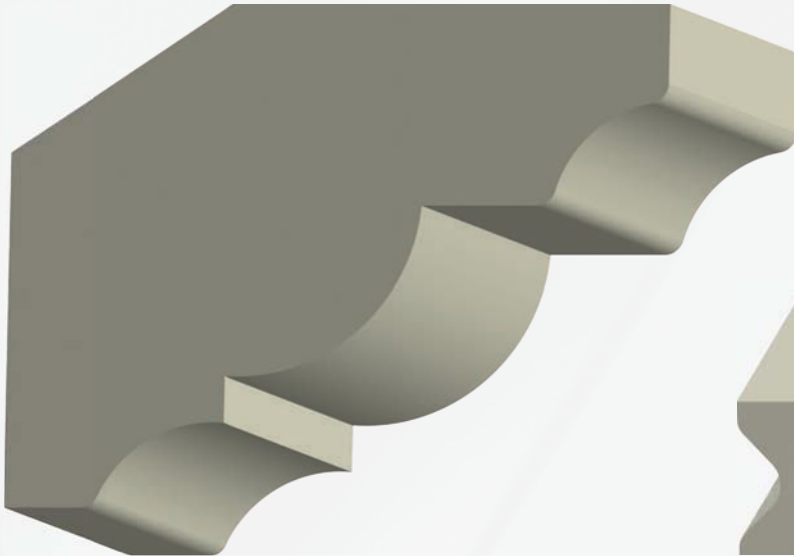
(items are approximate scale only)



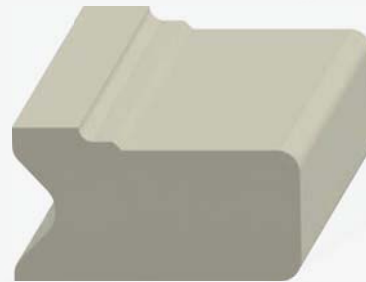
639 3/4 x 4-5/16 x 16' **Bed & Cove** N/S



286 5/8 x 3-5/8 x 16' **Colonial Crown** N/S

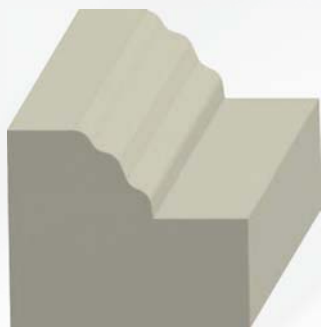


638 1-3/8 x 3-5/16 x 16' **Gutter Mould** N/S



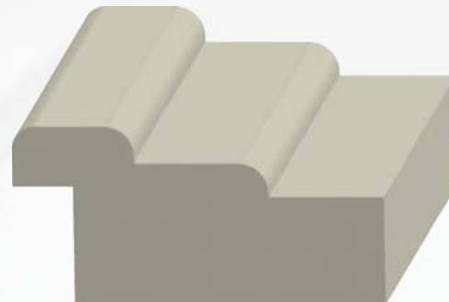
618 13/16 x 1-1/2 **Stucco Mold** N/S

lengths available: 17'



619 1-1/4 x 1-1/2 x 16' **Brick Mold** N/S

lengths available: 16'



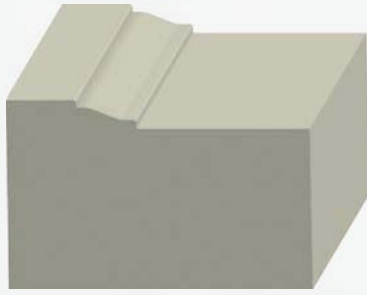
627 15/16 x 1-15/16 **Step Stucco Mold** N/S

lengths available: 17'

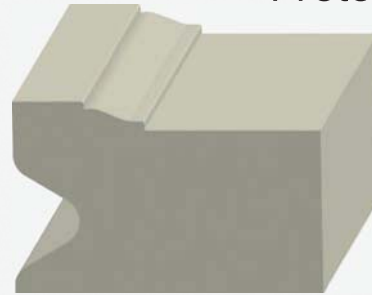


Bodyguard® Exterior Primed & Protected Millwork

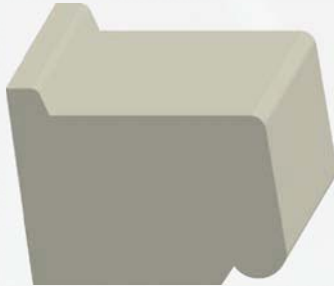
(items are approximate scale only)



381 1-1/4 x 2 #180 Eastern Brick Mold without Stucco Key **N/S**
lengths available: 17'



381K 1-1/4 x 2 #180 Eastern Brick Mold w/Stucco Key **N/S**
lengths available: 17'



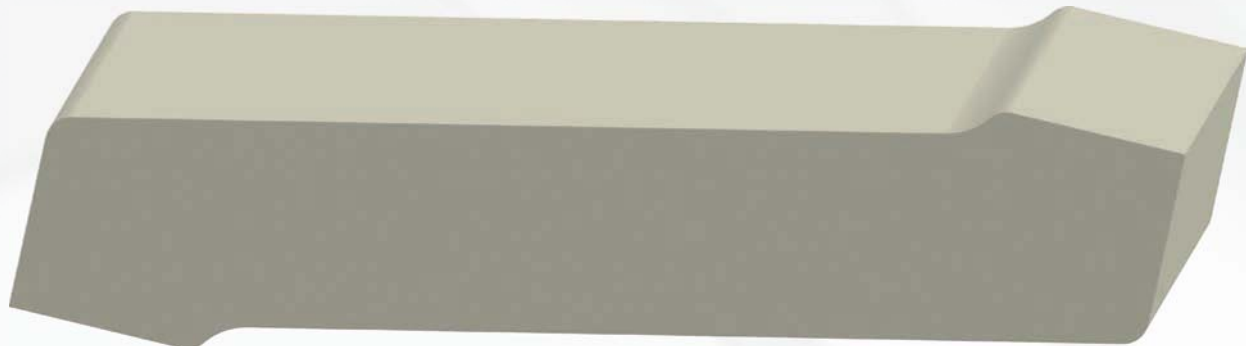
630 1-7/16 x 2-1/16 **Watertable** **N/S**
lengths available: 16' only



634 1-7/16 x 3-1/4 **Watertable** **N/S**
lengths available: 16' only



642 1-3/8 x 7 **Detailed Sill** **N/S**
lengths available: 16'



640 1-3/8 x 7 **Protected Reversible Sill** **N/S**
lengths available: 16'



Pakari Interior/Exterior Trimboards



(items are approximate scale only)

✦ lengths available: 8' thru 16'

Introducing...Pakari,
a thermally modified Pine
wood that is chemical
free using a simple heat
treatment of steam and
high temperatures.

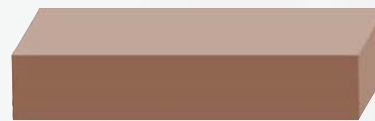


- ✓ FSC Certified
- ✓ Chemical Free Modification
- ✓ Insect & Rot Resistant
- ✓ Natural Rustic Appearance
- ✓ Lightweight
- ✓ Long Lengths
- ✓ Renewable Resource

Once the pine wood has been put through the unique process of Thermal Modification it is improved at the molecular level, taking on an abundance of new benefits; increased durability, stability, and even a reduction in the weight of the wood. The Pine wood turns into a rich chocolate brown color that is normally only seen in exotic hardwoods. If left untreated under direct sunlight, Pakari will eventually weather to a natural silver patina. To keep Pakari at its original chocolate brown color, it is recommended to use a UV protective coating.

Pakari's long length structure and lighter weight add up to a lower installation cost while providing an exotic look with a variety of design options.

Pakari is versatile enough to use indoor or outdoor. If used for an outdoor application, we recommend all Thermally Modified products be installed at least 12" above the ground and for siding application, using proper gap and nailing procedures to allow for normal wood expansion.



PAK1x4BW 11/16 x 3-5/8 **Pakari Rustic Barnwood Lumber** N/S



PAK1x6BW 11/16 x 5-3/4 **Pakari Rustic Barnwood Lumber** N/S



PAK1x6LAP 11/16 x 5-7/16 **Pakari Lap-Joint Paneling** N/S



DECKING SIDING TRIM INTERIOR DESIGN & DECOR