

# Box Score Report

WCHS @ CHS - Jan 27, 2023 - L 32-75

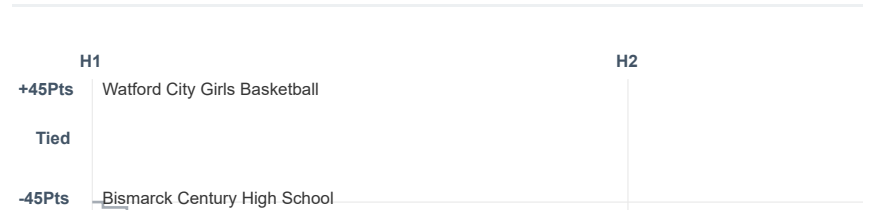
## Period Stats

| Team | 1  | 2  | Final |
|------|----|----|-------|
| WCHS | 11 | 21 | 32    |
| CHS  | 38 | 37 | 75    |

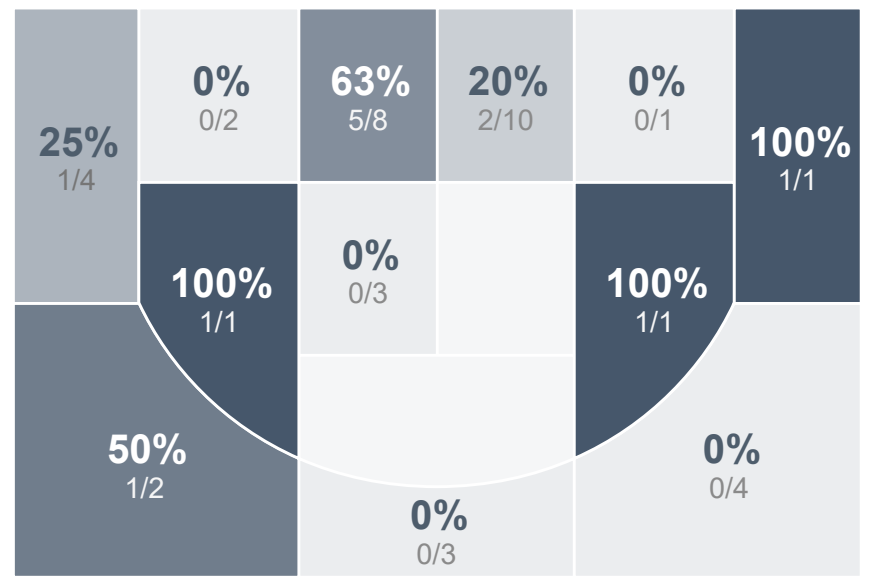
## Team Stats

|                        | WCHS   | CHS   |
|------------------------|--------|-------|
| Field Goal %           | 30.0%  | 44.6% |
| Effective Field Goal % | 33.8%  | 50.0% |
| 2FG Made/Attempted     | 9/26   | 22/42 |
| 2FG%                   | 34.6%  | 52.4% |
| 3FG Made/Attempted     | 3/14   | 7/23  |
| 3FG%                   | 21.4%  | 30.4% |
| FT Made/Attempted      | 5/5    | 10/13 |
| Free Throw Percentage  | 100.0% | 76.9% |
| Points Per Possession  | 0.49   | 1.13  |
| Transition Points      | 4      | 16    |
| Points Off Turnovers   | 4      | 24    |
| Second Chance Points   | 0      | 8     |
| Points in the Paint    | 14     | 42    |
| Offensive Rebounds     | 2      | 16    |
| Defense Rebounds       | 21     | 26    |
| Assists                | 7      | 11    |
| Deflections            | 13     | 14    |
| Steals                 | 6      | 17    |
| Blocks                 | 0      | 1     |
| Turnovers              | 25     | 11    |
| Personal Fouls         | 12     | 7     |
| Charges Taken          | 1      | 0     |

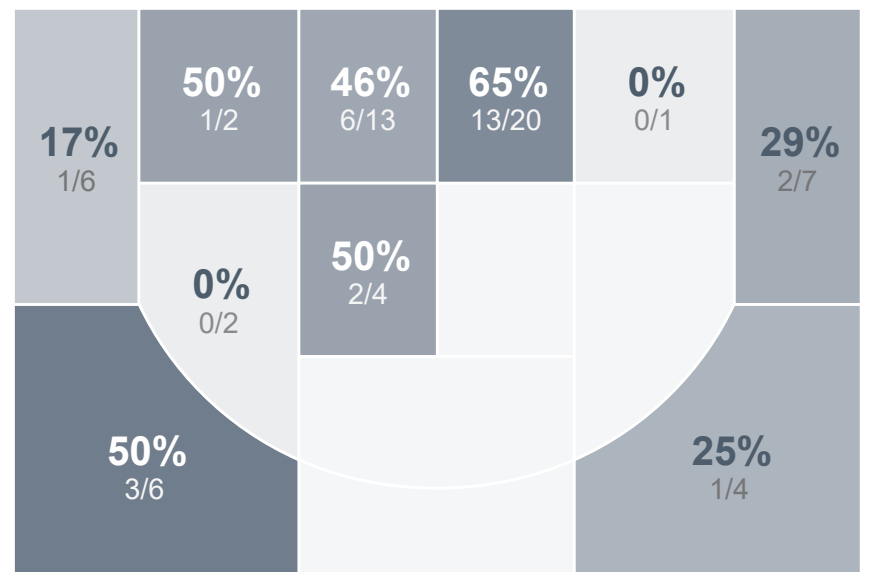
## Run Graph



## Watford City Girls Basketball



## Bismarck Century High School



### Watford City Girls Basketball's Player Stats

| Name                 | Pts | FG   | 3FG | FT  | +/-  | MINS | OREB | DREB | AST | DEFL | STL | BLK | TO | FOUL | CHG |
|----------------------|-----|------|-----|-----|------|------|------|------|-----|------|-----|-----|----|------|-----|
| #2 Fallon Sampsel    | 0   | 0/0  | 0/0 | 0/0 | - 3  | 3    | 0    | 0    | 0   | 1    | 0   | 0   | 0  | 0    | 0   |
| #4 Kenzy Kuchenbuch  | 0   | 0/0  | 0/0 | 0/0 | - 14 | 13   | 0    | 2    | 0   | 0    | 0   | 0   | 1  | 1    | 0   |
| #5 Jessica Mogen     | 15  | 6/14 | 1/5 | 2/2 | - 32 | 26   | 0    | 4    | 2   | 3    | 1   | 0   | 5  | 4    | 1   |
| #10 Bailey Mattson   | 5   | 2/5  | 1/1 | 0/0 | - 32 | 31   | 0    | 6    | 1   | 5    | 1   | 0   | 6  | 1    | 0   |
| #11 Gracen Breitbach | 8   | 3/9  | 1/4 | 1/1 | - 37 | 32   | 1    | 3    | 0   | 2    | 1   | 0   | 6  | 2    | 0   |
| #21 Adi Schaff       | 3   | 1/5  | 0/0 | 1/1 | - 36 | 30   | 0    | 2    | 0   | 1    | 1   | 0   | 0  | 3    | 0   |
| #22 Jordyn Pedersen  | 1   | 0/4  | 0/1 | 1/1 | - 37 | 29   | 0    | 4    | 3   | 1    | 2   | 0   | 4  | 1    | 0   |
| #23 Audrey Fowler    | 0   | 0/3  | 0/3 | 0/0 | - 24 | 21   | 0    | 0    | 1   | 0    | 0   | 0   | 2  | 0    | 0   |

### Bismarck Century High School's Player Stats

| Name                 | Pts | FG   | 3FG | FT  | +/-  | MINS | OREB | DREB | AST | DEFL | STL | BLK | TO | FOUL | CHG |
|----------------------|-----|------|-----|-----|------|------|------|------|-----|------|-----|-----|----|------|-----|
| #3 Eden Fridley      | 16  | 7/15 | 2/6 | 0/0 | + 31 | 21   | 0    | 1    | 1   | 1    | 4   | 0   | 0  | 1    | 0   |
| #5 Zoie Austin       | 12  | 5/9  | 0/1 | 2/2 | + 35 | 24   | 2    | 3    | 2   | 1    | 3   | 0   | 1  | 0    | 0   |
| #10 Abby Fosland     | 2   | 1/2  | 0/1 | 0/0 | + 16 | 20   | 2    | 2    | 2   | 1    | 2   | 0   | 0  | 0    | 0   |
| #11 Ziah GreyBull    | 6   | 2/5  | 2/4 | 0/0 | + 21 | 19   | 0    | 5    | 2   | 1    | 2   | 0   | 0  | 1    | 0   |
| #13 Bergan Kinnebrew | 23  | 7/15 | 2/5 | 7/8 | + 31 | 25   | 2    | 3    | 1   | 2    | 2   | 1   | 4  | 4    | 0   |
| #14 Ashlyn Buchholz  | 9   | 4/5  | 1/2 | 0/0 | + 25 | 17   | 1    | 2    | 1   | 1    | 2   | 0   | 3  | 0    | 0   |
| #20 Addie Weigel     | 2   | 1/1  | 0/0 | 0/0 | + 2  | 2    | 0    | 0    | 0   | 0    | 0   | 0   | 0  | 0    | 0   |
| #21 Grace Lang       | 0   | 0/0  | 0/0 | 0/0 | 0    | 1    | 0    | 0    | 0   | 0    | 0   | 0   | 0  | 0    | 0   |
| #23 Gabi Bird        | 0   | 0/3  | 0/3 | 0/0 | + 11 | 12   | 2    | 2    | 0   | 1    | 0   | 0   | 0  | 0    | 0   |
| #24 Katie Brown      | 0   | 0/2  | 0/0 | 0/0 | + 3  | 2    | 1    | 0    | 0   | 0    | 0   | 0   | 0  | 0    | 0   |
| #25 Emma Guthmiller  | 1   | 0/1  | 0/0 | 1/2 | + 5  | 11   | 1    | 2    | 0   | 1    | 1   | 0   | 0  | 0    | 0   |
| #30 Emma Davis       | 0   | 0/0  | 0/0 | 0/0 | + 2  | 2    | 0    | 1    | 0   | 0    | 0   | 0   | 0  | 0    | 0   |
| #33 Erika Lee        | 0   | 0/3  | 0/0 | 0/0 | + 30 | 17   | 4    | 3    | 1   | 1    | 1   | 0   | 2  | 1    | 0   |
| #34 Quinn Kost       | 0   | 0/1  | 0/0 | 0/0 | + 3  | 4    | 1    | 0    | 1   | 0    | 0   | 0   | 1  | 0    | 0   |
| #35 Madison Conner   | 2   | 1/2  | 0/1 | 0/0 | - 2  | 4    | 0    | 0    | 0   | 3    | 0   | 0   | 0  | 0    | 0   |
| #40 Allison Volk     | 2   | 1/1  | 0/0 | 0/1 | + 2  | 2    | 0    | 1    | 0   | 1    | 0   | 0   | 0  | 0    | 0   |