

STICKMAN ®



(One of a Kind)

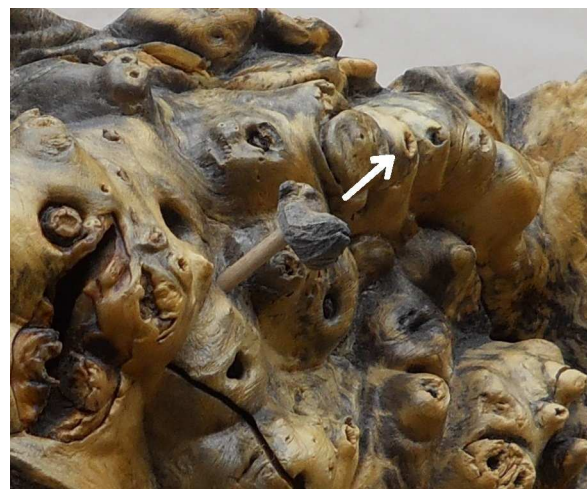
Burl Knot Puzzle Chest

This Stickman Burl Knot Puzzle Chest is quality hand-crafted, with mechanical components intricately fashioned by puzzle artist Robert Yarger. This is a unique one-of-a-kind commissioned piece, and no other like it will ever be made. The puzzle chest is of moderate difficulty to solve, and requires a minimum of 15 steps to access all 8 of its secret compartments.

INSTRUCTIONS

Step 1:

Locate and pull out the fake knot on the exterior of chest. This can be found on the top right portion of the chest.



Step 2:

With the fake knot extracted, the top center drawer slides freely, and can now be removed entirely from the chest. Once removed, a secret compartment can be located at the back and base of drawer.



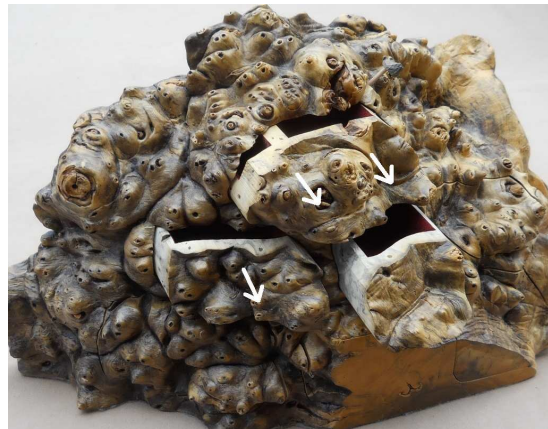
Step 3:

After accessing the secret compartment, re-insert the top-center drawer back into its slot. It will not return fully, and should stop with a firm click sound. The middle-center drawer can now slide open freely.



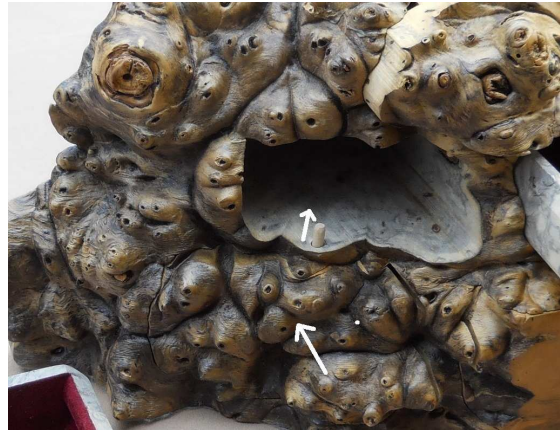
Step 4:

Pull out the top-center drawer out slightly (about ½ inch). An additional “click” can be heard. Now the middle-left drawer can also be fully removed.



Step 5:

Push in against the bottom-left drawer. This should release its retaining peg, allowing it to shoot up.



Step 6:

Remove retaining pin and bottom-left drawer can now be pulled out partially.



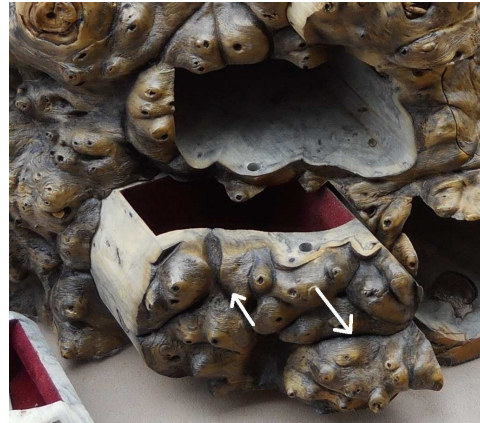
Step 7:

Bottom-center drawer can now be removed. Set aside for later.



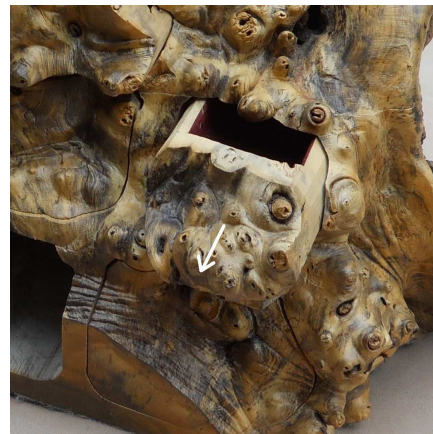
Step 8:

To free bottom-left drawer, push it back into the chest fully. This will unlock it so that it will now slide out all the way.



Step 9:

The middle-left drawer is only loosely held in with magnets. Remove it entirely from the chest now.



Step 10:

Take the removed middle-right drawer and apply its butt end to the front of the bottom-right drawer. The two drawers should lightly attach magnetically.



Step 11:

Push in the bottom-right drawer slightly with the butt of the middle-right drawer. Its magnetic latch will unlock.

Step 12:

Now gently pull, and the bottom-right drawer will come out. (*Note, when re-inserting this drawer, it may become necessary to jiggle it a little to get its magnetic latch to relock.*)



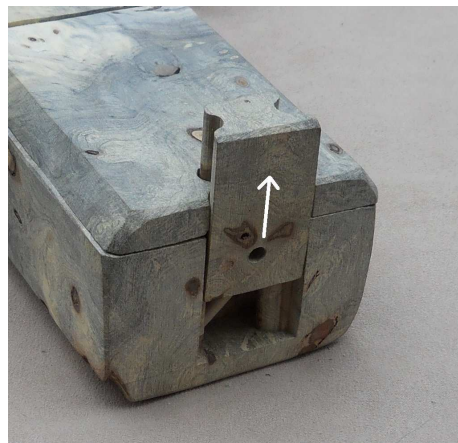
Step 13:

Use the spring pin (removed from step 6) and push in the dowel on the back of the bottom-middle drawer that was removed in step 7. Insert this pin just enough to push in the locking dowel, but still allow for its removal. If accidentally inserted too far to grasp, it can be tapped back out of the hole manually.



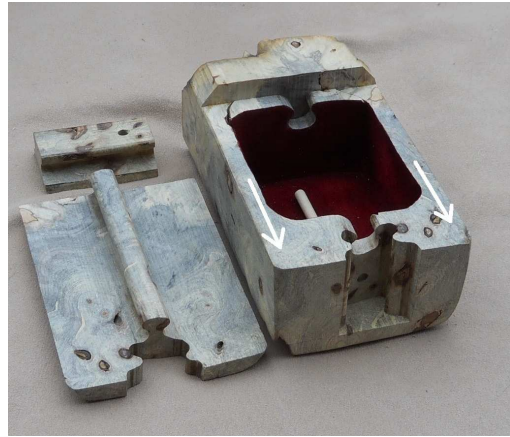
Step 14:

Slide end latch up and remove.



Step 15:

Slide off the top lid to the drawer. Remove the locking dowel pin that was pushed inside, and re-insert from the outside when closing.



Closing Instructions:

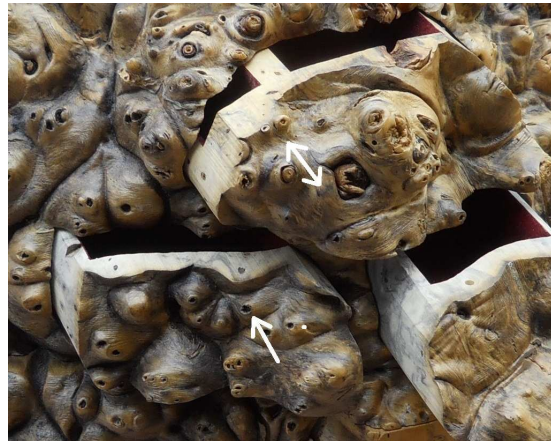
Notice the peg embedded in the wall between the bottom-left and bottom-center chambers. To re-insert these two drawers, first put in the bottom-left drawer, then pull it out slightly while pushing on this peg, until the peg depresses. The bottom-middle drawer can now slide in fully. Once the bottom-middle drawer is in, the bottom left drawer can also be pushed in fully.



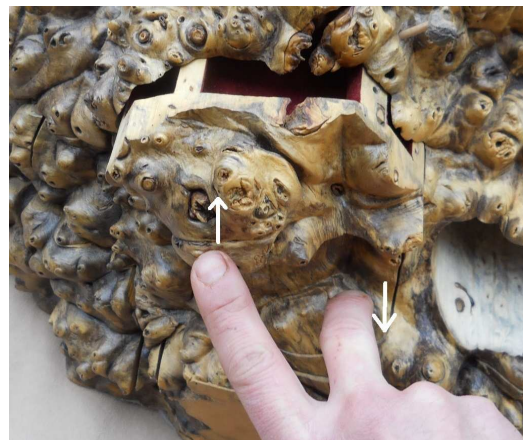
The bottom-left drawer has a hole for its retaining peg. Also residing in this hole are two opposing magnets that produce a spring effect on the retaining peg. If by accident, these magnets fell out, simply re-insert them with opposing polarities before locking the bottom-left drawer into place with its peg. Note that, once this peg is re-inserted to lock this drawer, it still must be pushed down further manually to allow the drawer above it to be replaced.



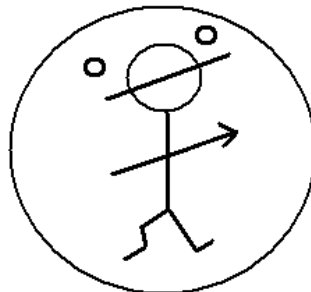
Before inserting the middle-left drawer, the retaining pin below it must be manually pressed down, and also the locking pin above it must be retracted. To retract the top locking pin, first insert the top-middle drawer until it stops, then pull it out again slightly (about ½ inch) until this retaining pin retracts.



Before inserting the top-center drawer, first be sure that all drawers below it are installed. Slide in the top-center drawer until it stops with a click. This “click” is the locking pin from underlying drawers dropping. Now, pull gently on the middle-center drawer, and maintain this tension as the top drawer is pushed in. Pulling on the middle-center drawer temporarily restricts its locking pin from lifting back up, so the drawer above can be pushed fully back in.



STICKMAN ®



Quality Wooden Boxes