

North Delta Water Agency



Public Meeting
November 5, 2014

Presented by:
Gary Kienlen – MBK Engineers
Kevin O'Brien – Downey Brand

1

Introductions

- NDWA staff
 - Melinda Terry
 - Colleen Flannery
 - Gary Kienlen, Engineer
 - Kevin O'Brien, Legal Counsel
- NDWA Board members

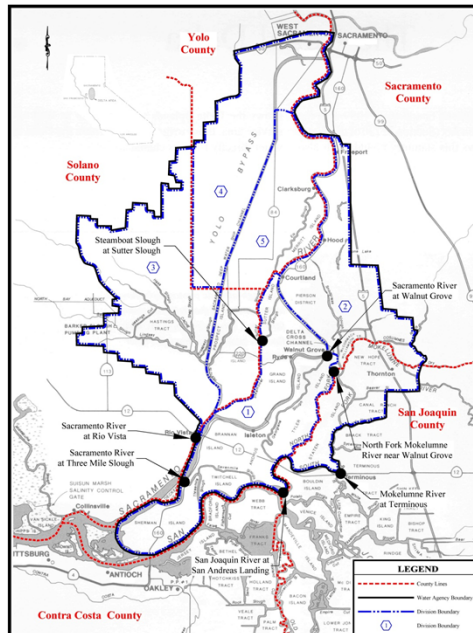
2

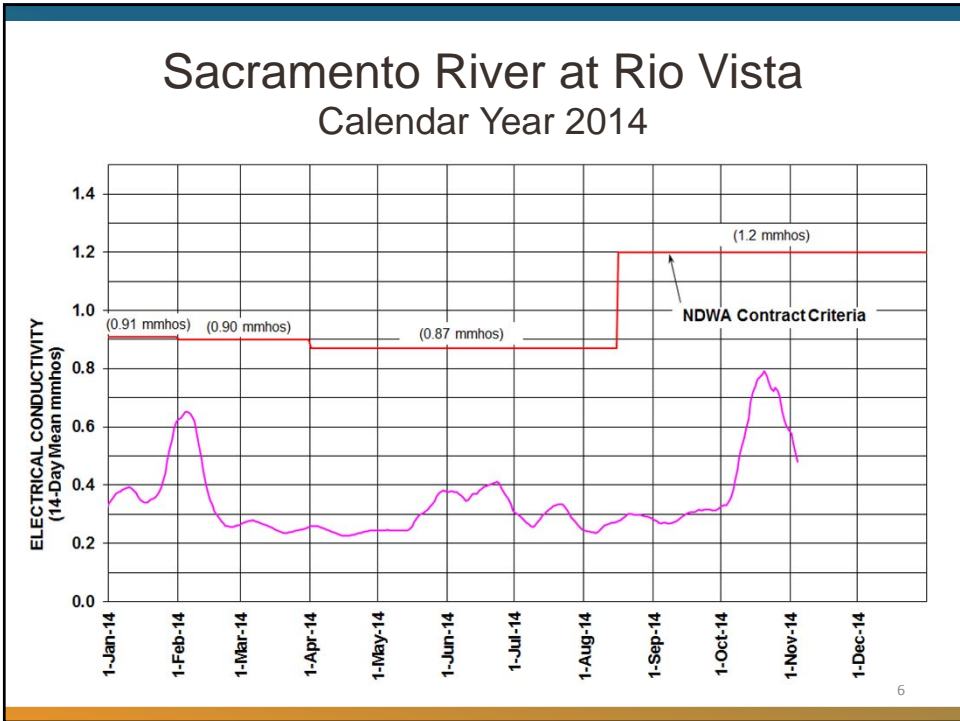
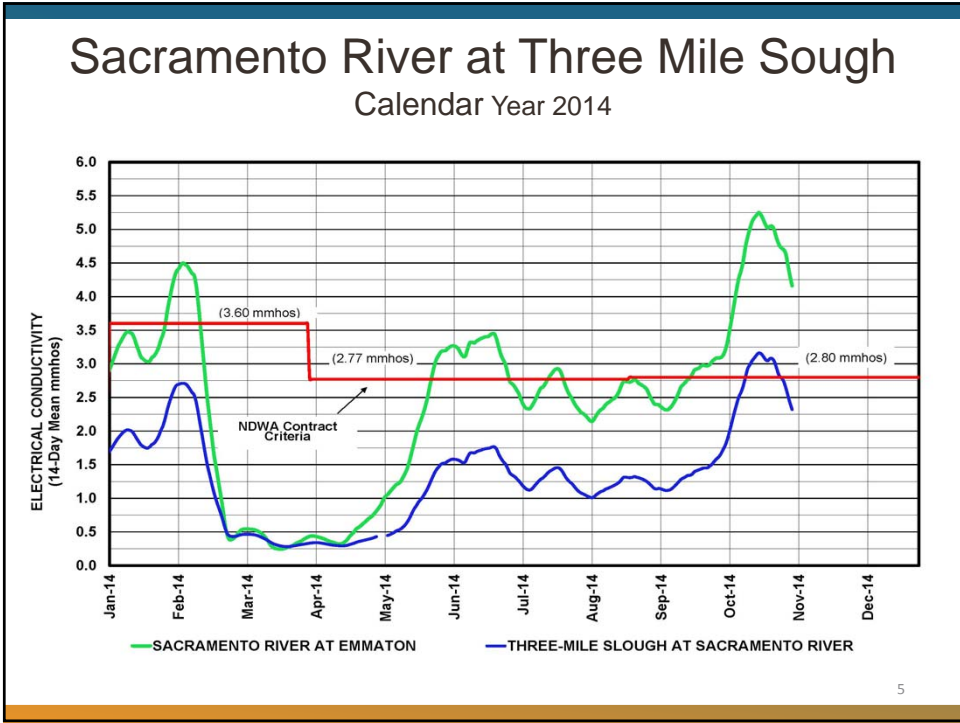
Topics for Discussion

- Current water quality conditions
- Drought presentation
 - 2014 drought and related actions
 - NDWA Contract
 - Emergency provisions
 - Status of barriers
- Questions and discussion

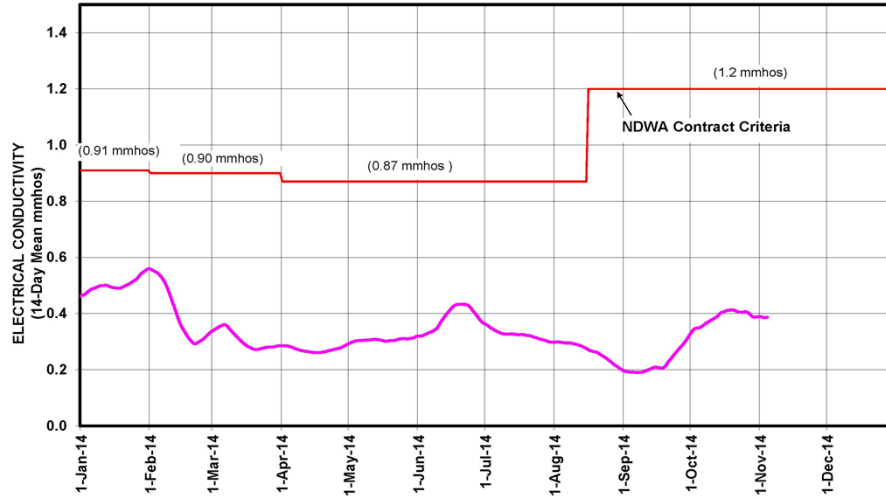
3

NDWA Contract WQ Criteria Compliance Locations



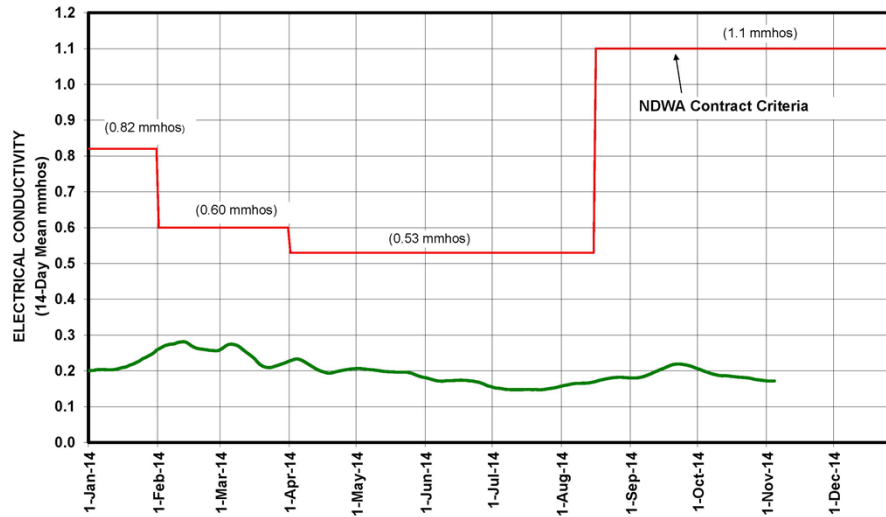


San Joaquin River at San Andreas Landing Calendar Year 2014



7

Mokelumne River at Terminus Calendar Year 2014



8

Water Quality Monitoring

- Available water monitoring data
 - Water quality
 - Flow
 - Water elevation or Stage
 - Velocity
 - Other
- Data available through
 - California Data Exchange Center (CDEC)
 - <http://cdec.water.ca.gov/>
 - <http://cdec.water.ca.gov/queryQuick.html>
 - Water Data Library (WDL)
 - <http://www.water.ca.gov/waterdatalibrary/>
 - US Geological Survey (USGS)
 - http://waterdata.usgs.gov/ca/nwis/current/?type=all&group_key=NONE

9

Data Available on CDEC

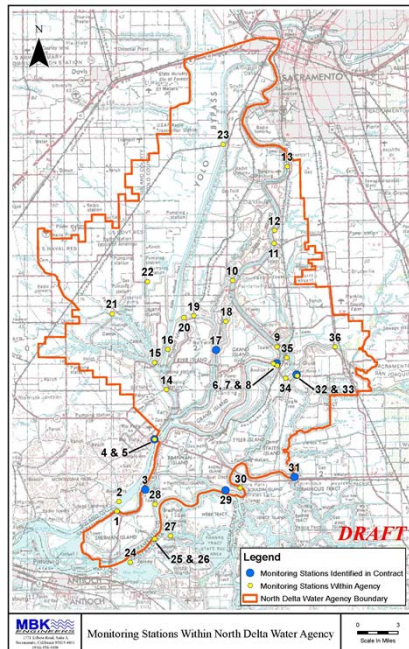
No	CDEC Station ID	Station Name	Entity	EC	Velocity	Flow	Stage
1	EMM	Emmaton	USBR	X			
2	SDI	Sacramento River at Decker Island	USGS	X	X	X	
3	TMS	Three Mile Slough	DWR	X			
4	RVB	Sacramento River at Rio Vista	USBR	X			
5	RIV	Rio Vista	USBR	X			X
7	GSS	Georgiana Slough at Sacramento River	USGS	X	X	X	X
8	GES	Sacramento Blw Georgiana Slough	USGS	X	X	X	X
9	SDC	Sacramento R above Delta Cross Channel	USGS		X	X	X
10	SUT	Sutter Slough at Courtland	USGS		X	X	X
11	SRD	Sacramento River at Hood (USGS)	USGS		X	X	X
12	SRH	Sacramento River at Hood	DWR	X			
13	FPT	Sacramento River at Freeport	USGS	X	X	X	X
14	RYI	Cache Slough at Ryer Island	USGS	X	X	X	X
15	LIB	Liberty Island @ Approx Center S End	USGS	X	X	X	X
16	DWS	Deep Water Ship Channel	USGS	X	X	X	X
18	SSS	Steamboat Slough stw Sac R and Sutter Sl	USGS		X	X	X
19	HWB	Miner Slough at Hwy 84 Bridge	USGS	X	X	X	X
20	MFV	Miner Slough at Five Points	DWR				X
21	CCS	Cache Slough	USBR	X			
22	LIR	Liberty Island - RD 2068	DWR				X
23	LIS	Yolo Bypass at Lisbon	DWR		X	X	X
24	BLP	Blind Point	DWR	X			
25	SIJ	San Joaquin River at Jersey Point	USGS	X	X	X	X
26	JER	Jersey Point	USBR	X			
27	FAL	False River	USGS	X	X	X	X
28	TSL	Threemile Slough at San Joaquin River	USGS	X	X	X	X
29	SAL	San Joaquin River at San Andreas Landing	USBR	X			
30	MOK	Mokelumne R @ San Joaquin River	USGS	X	X	X	
31	STI	Staten Island on SF Mokelumne River (Terminus)	USBR	X			
33	SMR	South Mokelumne River at W Walnut Grove Rd	USGS	X	X	X	X
34	NMR	North Mokelumne River at W Walnut Grove Rd	USGS	X	X	X	X
35	DLC	Delta Cross Channel btw Sac R & Snodgrass	USGS	X	X	X	X
36	BEN	Mokelumne R NR Thornton (Benson's Ferry)	DWR				X

10

Data Available on WDL

Data Available on Water Data Library							
No	WDL Station ID	Station Name	Entity	EC	Velocity	Flow	Stage
6	B91650	Sacramento River at Walnut Grove	DWR	X		X	X
17	B91479	Steamboat Slough below Sutter Slough	DWR	X			
32	B94133	NF Mokelumne River blw Snoggrass Sl	DWR	X			

11



Monitoring Station Locations

- NDWA Contract Compliance points
- Other Monitoring Points

<http://cdec.water.ca.gov/queryQuick.html>

Cache Slough (CCS)
 Elevation: 0' - DELTA basin - Operator: US Bureau of Reclamation

Query executed Wednesday at 12:37:21
 Provisional data, subject to change.
 Select a sensor type for a plot of data.

Earlier

Date / Time (PST)	EL COND uS/cm	TEMP W DEG F	BAT VOL VOLTS
11/05/2014 01:00	750	59.0	14.1
11/05/2014 02:00	725	58.9	14.1
11/05/2014 03:00	652	58.9	14.1
11/05/2014 04:00	618	59.1	14.1
11/05/2014 05:00	648	58.9	14.1
11/05/2014 06:00	713	58.6	14.1
11/05/2014 07:00	763	58.3	14.1
11/05/2014 08:00	802	57.9	14.1
11/05/2014 09:00	858	57.8	14.1
11/05/2014 10:00	839	58.0	14.1
11/05/2014 11:00	834	58.7	14.1
11/05/2014 12:00	737	59.4	14.1

Later | Latest

EVENT DATA

Date / Time (PST)	EL COND uS/cm
11/05/2014 00:45	756
11/05/2014 01:00	750
11/05/2014 01:15	747
11/05/2014 01:30	726
11/05/2014 01:45	741



Drought Related Actions

- Jan 17
 - Governor issues Drought Proclamation
 - SWRCB issues notice of probable curtailments
- Jan 31
 - SWRCB Order approving Temporary Urgency Change Petition by DWR and USBR (TUCP)
- Apr 8
 - Drought Operations Plan (DOP) submitted to SWRCB by DWR and USBR
- May 27
 - SWRCB curtails Post-1914 water rights

Drought Related Actions Cont.

- Sep 24
 - SWRCB workshop – Central and south delta water availability and use
 - SWRCB considered and denied petitions for reconsideration of the Jan 31 TUCP Order
- Oct 3
 - SWRCB plan for temporary lifting of post-1914 curtailments
- Oct 7
 - SWRCB most recent modification to Jan 31st TUCP
- Oct 31-Nov 2
 - SWRCB temporarily lifted curtailments of post-1914 water rights

17

Drought Related Actions TUCP and SWRCB Order

- Projects to submit Drought Contingency Plan (DCP) for Oct through Jan by Oct 15, 2014
 - CVP and SWP anticipate operating under D 1641 standards as modified by TUCP Order under 50% and 90% hydrology
 - Potential modifications to DCC operations under 99% hydrology
- Projects to submit DCP for remainder of WY 2015 January 15, 2015

18

NDWA Contract

- Assures a dependable water supply of suitable quality
 - Protection from ocean salinity intrusion
 - Continued diversions during curtailment periods
 - Year round salinity standards at 7 locations
- Other protections
 - Changes in natural flows, flow directions, and water surface elevations
 - Erosion and seepage
- Drought Emergency Provision – Article 4

19

NDWA Contract Emergency Provisions (Article 4)

- Article 4 provides for compensation from the State for damages during a drought emergency when an alternative supply is not available:
 - Compensation for loss of net income for each acre which, due to the drought emergency, was;
 - Planted to a more salt-tolerant crop,
 - Not planted to any crop, or
 - Which had a reduced yield

20

NDWA Contract Emergency Provisions (Article 4)

- A drought emergency exists when **all** of the following occur:
 - The Four River Index is less than an average of 9.0 MAF in two consecutive years; and
 - An SWRCB Emergency Regulation is in effect providing for SWP operations to maintain water quality *different than provided under the NDWA Contract*; and
 - Water Supplies for SWP agricultural contractors are less than 50% supply; or water supplies to **all** SWP Contractors are reduced by more than 15%

21

NDWA Contract Emergency Provisions (Article 4) Cont.

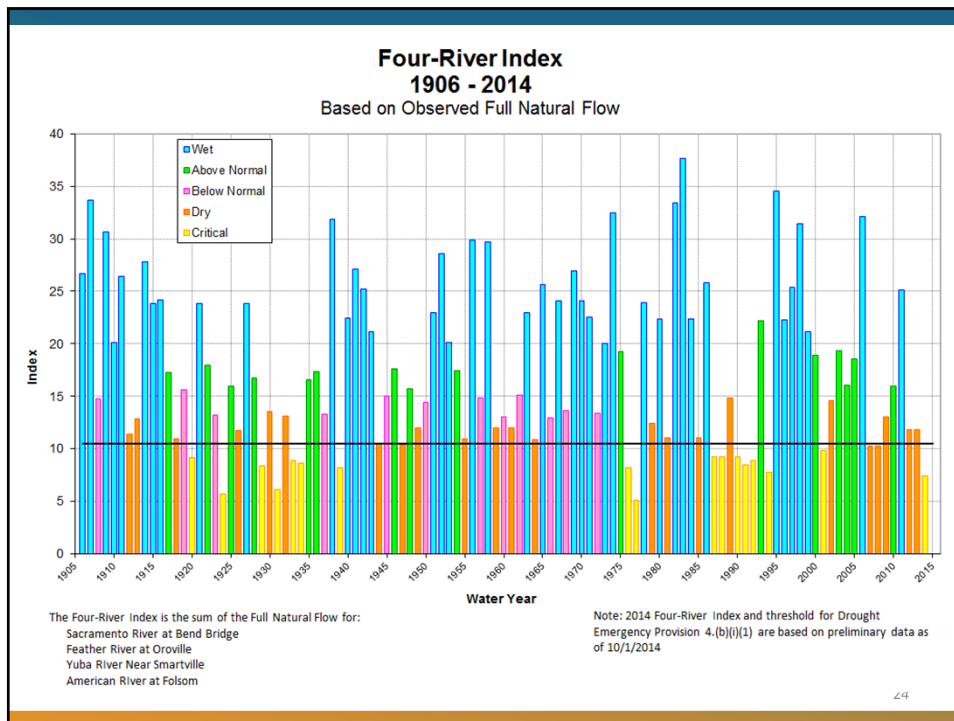
- Four River Index (SRI)
 - Actual and forecasted unimpaired flow
 - Sacramento River at Bend Bridge
 - Feather River at Oroville
 - Yuba River at Smartville
 - American River at Folsom

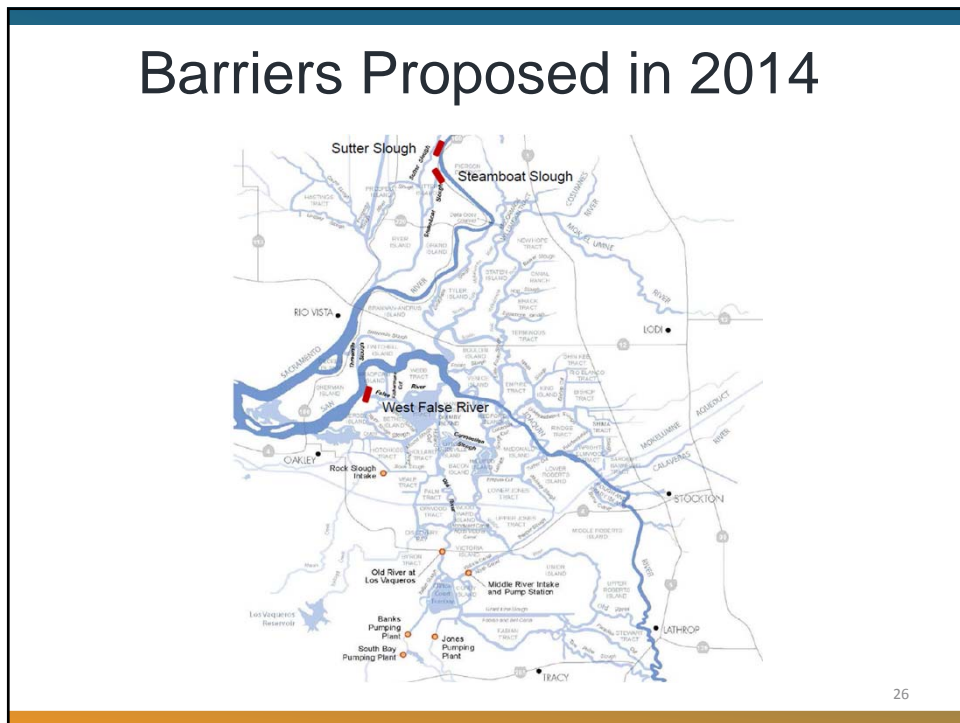
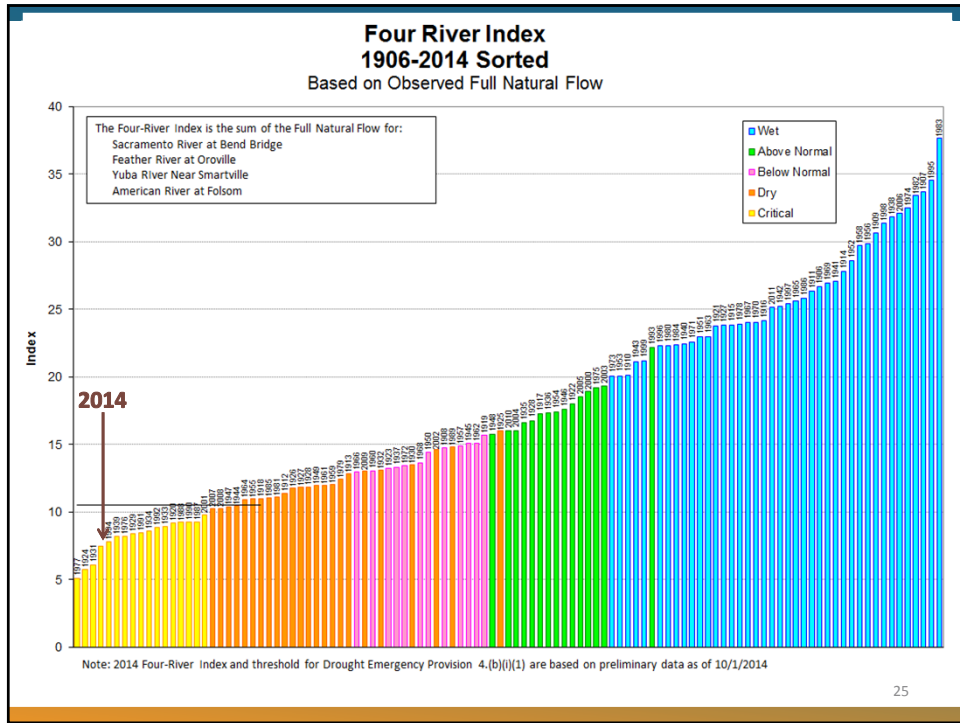
22

NDWA Contract Emergency Provisions (Article 4) Cont.

- May 1, 2014 Bulletin 120 forecast
 - 50% exceedance = 7.18 MAF
- Water year 2014 actual
 - 7.47 MAF
- Water year 2015 forecast
 - Condition (a) triggered *if* May 1, 2015 forecast is less than 10.53 MAF

23





Status of Barriers

- Barriers not included in Oct 15th Drought Contingency Plan
- Barriers will likely be included in the Jan 15th Drought Contingency Plan
 - Timing: depends on fishery and salinity management and hydrology
- Permitting process is still an issue
- NDWA is continuing discussions with DWR

27

Next Steps

- Agency is continuing to monitor conditions closely and will take appropriate action based on conditions/circumstances
- Agency will disseminate information to landowners
 - Letter to landowners
 - Possible public meetings
 - Other correspondence as appropriate
- Oct 29th meeting with DWR

28

Questions & Discussion



29

