

Mouse Anti-Cytokeratin 10/13 [DE-K13]: MC0738, MC0738RTU7

Intended Use: For Research Use Only

Description: Cytokeratin 10 (CK10) is an intermediate filament protein and typically associated with cytokeratin 1 (CK1). CK 10 is expressed in the suprabasal cell layers of certain stratified epithelia, notably epidermis. CK10 has been used as a marker of epidermal differentiation. Antibody against CK10 is helpful in the identification of more differentiated squamous cell carcinomas.

Specifications:

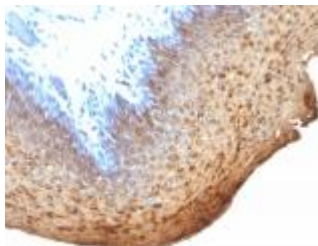
Clone: DE-K13
Source: Mouse
Isotype: IgG2a/k
Reactivity: Human, cat
Localization: Cytoplasm
Formulation: Antibody in PBS pH7.4, containing BSA and $\leq 0.09\%$ sodium azide (NaN₃)
Storage: Store at 2°- 8°C
Applications: IHC
Package:

Description	Catalog No.	Size
Cytokeratin 10/13 Concentrated	MC0738	1 ml
Cytokeratin 10/13 Prediluted	MC0738RTU7	7 ml

IHC Procedure*:

Positive Control Tissue: Skin, SqCC
Concentrated Dilution: 50-200
Pretreatment: Citrate pH6.0, 15 minutes using Pressure Cooker, or 30-60 minutes using water bath at 95°-99°C
Incubation Time and Temp: 30-60 minutes @ RT
Detection: Refer to the detection system manual

* Result should be confirmed by an established diagnostic procedure.



FFPE human tonsil stained with anti-CK10/13 using DAB

References:

1. The adult penile urethra is a novel entry site for HIV-1 that preferentially targets resident urethral macrophages. Ganor Y, et al. Mucosal Immunol : 2012.
2. Patterns of expression of feline cytokeratins in healthy epithelia and mammary carcinoma cells, Ivanyi, D., et al. Journal of Pathology, 159:7-12. 1992.
3. Cytokeratins as markers of initial stages of squamous metaplasia in feline mammary carcinomas, Am J Vet Res 54, 1095. Ivanyi, D., et al. 1993.