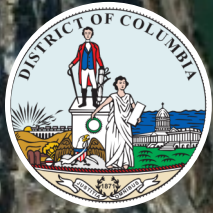


MASONIC MAN OF COLUMBIA

The purpose of this illustration is to consider encrypted Luciferian motifs in the District of Columbia. There appears to be an 'anthropomorphic' proportioned 'man' and 'temple' that can superimposed to the entire breathe of the capital core from the *Capitol Hill* to the *Lincoln Memorial*. Although there have been expensive studies, no other world capital perhaps, reveals such a wealth of encrypted layers of motifs as one of the premier Luciferian world capitals of the *Elders of Zion*. This motif is highly suggestive but resonates with many prior Masonic motifs found in ancient and modern world capital. The template is taken from the *Temple of Man* that is found in Luxor, Egypt. In essence, this *Temple of Man*, or the 'Masonic Man' is the age-old motif of the counterfeit to the true measure of man and the universe, Jesus Christ.

LUCIFERIAN ANTHROPOMORPHIC ANTICHRIST

The light of the Sun during the day will cast the shadow of the *Washington Monument* to the sights of the *Oval Office* to the north as if to impregnate the womb with the 'seed of the Serpent', of Nimrod, of Lucifer, etc. The optical illusion is perceived as that of a gradual erection from sunrise to sunset. The entire depiction is of a Luciferian counterfeit assertion whereby Jesus Christ is the One that hold the 'Stars of the Church' in His Right Hand and sits in a 'White House' or Throne at the Right Hand of the Father, etc.



The *phallus* corresponds to the *Washington Monument*. It is rather interesting that the *Washington Monument* is situated within a *Vesica Pisces* that insinuates a penetration within a 'womb'. The entire *Washington Monument* is depicted from a top view as being interwoven with a scarab-type of configuration of streets. In the Luciferian religion of Freemasonry, the motif of a scarab denotes a resurrection.

The *Washington Mall* corresponds to the chest/breast area of the 'Masonic Man'. It is rather interesting that where the breast is approximated, there are 2 oval/round shaped buildings within the Mall. The extended arms corresponds to the main triangular angle that matches the line of *Pennsylvania Ave* with the right hand. The right hand corresponds to the *White House* and the *Oval Office*. The left hand corresponds to the *Jefferson Memorial*.



Consort of Orion
Semiramis & Nimrod
'Sit at My Right Hand'
Holds 'Star' in Right Hand

77°02'06.66"
WASHINGTON MONUMENT
'Phallus'

Impressively the headpiece eerily does appear to resemble a skull with protruding eyes and open mouth. What this study also suggests as a possible encrypted motif has to do with the 'head-dress' that this 'Masonic Man' portrays. It is well understood that from established research by others, the *Capitol Hill* enclave is lined-out in the form of the out-stretched horned owl, *Molech*.

Lord of the Darkness



Molech is the god of abortion, among other evils of which YHVH admonished the Jews not to abort their babies to the flaming arms of the false god. This study suggests that this 'owl headdress' could assume the 'horns' of the *Lord of Darkness*, one of the many renditions of Lucifer.

The human form has 12 ribs as is the truncated Luciferian pyramid with 12 steps excluding the foundation and Capstone.



Phallus
Vesica Pisces
'WOMB'



In the present day, the phallus of the *Washington Monument* is corresponding in an alignment with the *Oval Office* of the *White House*. The alignment matches the sexual energies of the male and female to produce the resurrected 'Christ-Child' or resurrection of Nimrod as the 14th piece that went missing and was magically then inserted.

HORNED OWL MOLECH



ISIS

Google Earth

© Composition & Some Graphics by
LUIS B. VEGA
vegapost@hotmail.com
www.PostScripts.org
FOR ILLUSTRATION PURPOSES ONLY

Main Sources
GoogleEarth.com
TempleSecrets.info
Wikipedia.com

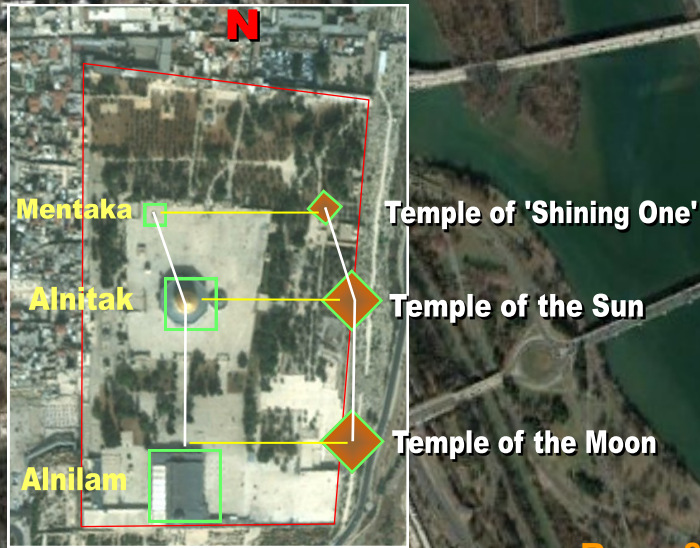
TEMPLE MAN OF COLUMBIA

The purpose of this illustration is to suggest that an encrypted layer can be seen superimposed over the core of the breathe of the *District of Columbia*. It is of the outline of the *Temple of Solomon* but likewise in the fashion of the *Temple of Man*. This notion of the *Temple Man* is the work of the conceptualization of the anthropomorphic Temple-Man by Tony Badillo at www.templesecrets.info. He is the first to 'anthropomorphize' the *Temple of Solomon* with amazing correlations and perspective. Badillo surmises that the Temple of YHVH is an exact representation of His 'form' and 'likeness' of the Messiah. There is a head at the top from a west-east perspective. This head chamber, a perfect square or 'cube' is as is the *Holy of Holies* where the *Ark of the Covenant* was located.

LUCIFERIAN ANTHROPOMORPHIC TEMPLE COUNTERFEIT

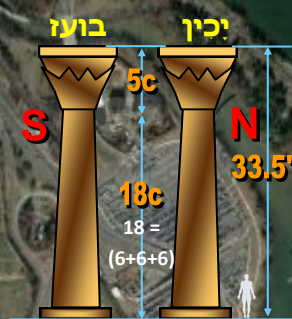
Capitol Hill is the 'capital' which comes from the Latin, 'head' as in 'capital punishment'. There is the *Holies* is what contains the *Table of Bread*, the *Altar of Incense* and the *Menorah Candlestick*. These objects correlate to the core of the main organs of a human body that like the motifs, is where the stomach, the heart and the branches of the lungs as a Menorah represent the 'pneuma' or breath or Spirit of YHVH, the Holy Spirit, etc. The outside chambers of the core of the Temple functioned to store supplies and for priestly preparation. These correspond to the long arms of the body. At the end corresponding to the 5 digits of each hand, there were 10 total small portable receptacles of water that the priests used for the sacrifices. It spoke of how one was to handle the vessels of YHVH and enter in to His Presence, 'with clean hands and a pure heart'.

TEMPLE MOUNT
The City of the KING
THE LION OF THE TRIBE OF JUDAH



ORION-GIZA PATTERN

BOAZ & JACHIN



Scripture speaks of the Body and Temple of Christ, as well as Believers of Jesus Christ whose 'body' is the Temple of the Holy Spirit.

SOLOMON'S TEMPLE
Superimposed Anthropomorphic Man
by Tony Badillo: templesecrets.info

Boaz and Jachin were 2 copper, brass or bronze pillars which stood in the Porch of Solomon's Temple, the first Temple in Jerusalem. These serve as both the gonads and 2 testis of a man that have the seed of reproduction as did the pomegranates that decorated the capitals of the pillars portrays. The long shafts of the pillars represent the legs if one extends the length of the pillars to connect with the *Brazen Altar*. That was outside the Temple and the first motif entering from the outside of the camp of the congregation as it were. Is it no wonder how Jesus Christ could say of the Jewish religious leaders that were imposters, *Synagogue of Satan* and *Elders of Zion* that if they 'destroyed the Temple, He would raise it in 3 days'.



Google Earth

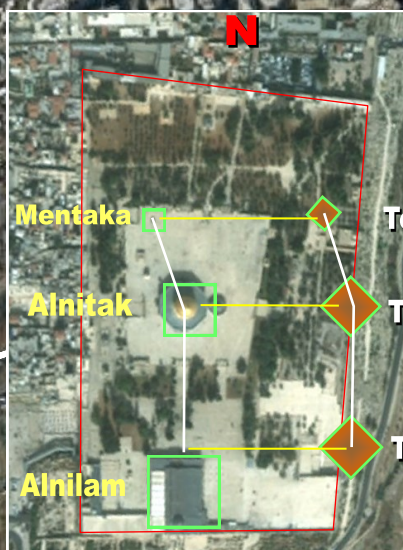
ORION MAN OF COLUMBIA

The purpose of this illustration is to show that not only is the 'Masonic Man' and the *Temple Man* a viable outline portrayed but this form is that of *Orion* also. If the Luciferians have such a layered motif that incorporates the 'Masonic Man' template based on an anthropomorphic Solomon's Temple male form, then surely the extended cryptic layer will also correspond to that of the celestial realm. This is the case as one can also superimpose the constellation lay-lines of the constellation of Orion. This study strongly suggests that the *White House*, the *Washington Monument* and the *Jefferson Memorial* construe the very belt stars of *Orion* as does the plaza at the Vatican. This would be one of the explanation as to why the *Washington Monument* as not placed in perfect alignment with the other 2 structures; such are the 3 stars of *Orion* that are also offset.

LUCIFERIAN ANTHROPOMORPHIC COUNTERFEIT 'CHRIST'

The *White House* corresponds to the 'White' Temple of YHVH and the *Orion* star of *Mintaka*. The *Dome of the Rock* corresponds to the *Washington Monument* and the *Orion* star of *Alnilam*. The *Jefferson Memorial* corresponds to the *al-Aqsa mosque* and the *Orion* star of *Alnitak*. With such precision, it is amazing that the lay-lines of the outline of *Orion* also match the bridges that span the *Potomac River*.

TEMPLE MOUNT
The City of the KING
THE LION OF THE TRIBE OF JUDAH



ORION-GIZA PATTERN

© Composition & Some Graphics by
LUIS B. VEGA
vegapost@hotmail.com
FOR ILLUSTRATION PURPOSES ONLY

MAIN SOURCES
GoogleEarth.com
TempleSecrets.info
Wikipedia.com

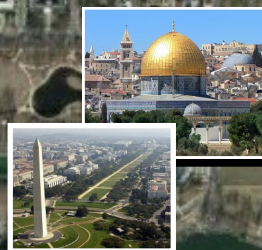
The structures represent largely the main religions of the world, Judaism, Christianity and Islam. Thus, also the buildings do correspond with this template. The 'Sun, Moon and the Stars' axiom corresponds to the 'holy books'. The 'White' Temple is that of the Jews, the gold *Dome of the Rock* is that of the Muslims and the Moon silver color of the *al-Aqsa mosque* previously was a Templar Church.

Stars
1st & 2nd
Temple
הר הבית



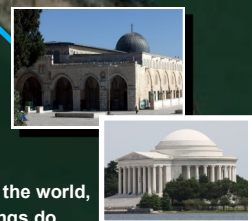
Mentaka
THE WHITE HOUSE
WHITE

Sun
قبة الصخرة



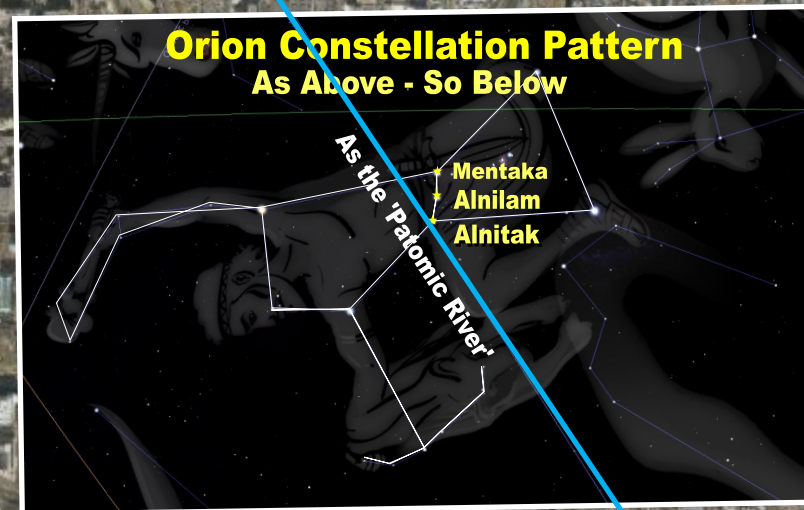
Alnilam
WASHINGTON MONUMENT
'Phallus'
GOLD

Moon
المسجد الاقصى

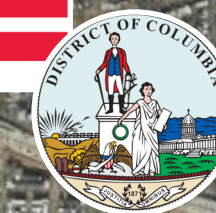


Alnitak
JEFFERSON MEMORIAL
SILVER

The Orion template is a depiction of the macro and micro symmetry and mirrored compositions of such sacred layouts in relation to Heaven and Earth themselves. Meaning that the Luciferian axiom of *As Above, So Below* is incorporated in these Luciferian and Columbian lay-lines.



With this grandiose supposition, the *Orion* template can be superimposed with a double layer of the *Great Pyramids of Giza* that replicated the *Belt of Orion* but more so approximate *Temple Mount* depictions of the 3 main religious structures. The *Temple Mount* square serves as the 'Altar' that the 3 main books of the Masons in their Synagogues of Satan lodges have placed there. These are the Torah, the Bible and the Koran.



Google Earth