



ALTA
WINDOW FASHIONS

design simplified

AUTOMATION

PRICING & REFERENCE GUIDE

Pricing effective March 13, 2023 and supersedes all previous pricing.
Subject to change by Alta Window Fashions.

AUTOMATION *from Alta*

AUTOMATION

Introduction	3
Why Automation?	4
Key Terms to Know	5
At a Glance Automation by System	6
Automation Basics	7
Automation Line Up Motor Quick Guide	8

BLISS™ AUTOMATION

Introduction	11
Features and Available Products	11
Frequently Asked Questions	12
At-a-Glance Motor System by Product Matrix	13
Motor Options	14
Power Options	17
Control Options	19
BLISS App and Bridge.....	20
Solar Panel Tips and Considerations	21
Retail Pricing & Surcharges	22
QR Code Links to BLISS Programming and How to Videos	23

SOMFY AUTOMATION

Introduction	25
Features and Available Products	25
Frequently Asked Questions	26
At-a-Glance Motor System by Product Matrix.....	27
Compatible Third Party Automation Systems.....	27
WireFree RTS Motor Options	28
Plug-in and Hardwired RTS Motor Options	30
WireFree Zigbee Motor Options	31
Hardwired Zigbee Motor Options	32
Power Options	33
RTS Control Options	36
TaHoma® Bridge and App.....	38
Zigbee Control Options	39
Retail Pricing & Surcharges	40
QR Code Links to Somfy Programming and How to Videos	41

POWERWAND MOTORIZATION

Introduction	43
Features and Available Products	43
Retail Pricing & Surcharges	43
Frequently Asked Questions	44
QR Code Links to Powerwand Programming and How to Videos	45

WARRANTY INFORMATION	46
-----------------------------------	----

AUTOMATION *from Alta*

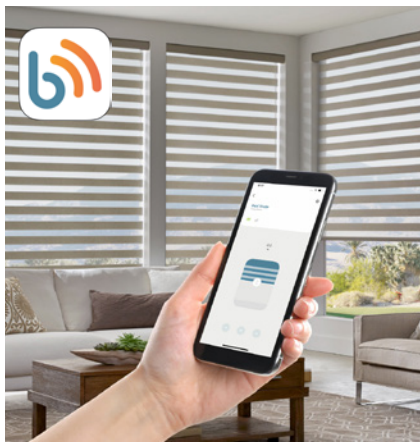
HIGH TECH LOW STRESS

SMART SOLUTIONS FOR ALL



At Alta, we embrace innovation. Our convenient, state-of-the-art automation options allow you to effortlessly operate your Alta window coverings with a touch of a button using a wand, handheld remote, your smart device, or even your voice. You can program your shades to adjust automatically via an app or pair with today's intelligent home systems so you can keep pretty much everything in your home under control (kids not included.)

BLISS™ AUTOMATION BY ALTA



Enjoy the benefits of purposeful ease! Enjoy a wide range of motor and power options for narrow and wider shades. Each is designed to integrate seamlessly into home networks for automation that can be operated via App or voice control.

Find out more about the BLISS Automation by Alta line up



Scan this code or click here to watch

SOMFY AUTOMATION



Create a well connected environment with new Zigbee motors. Each provides the serenity of our current Sonesse RTS quiet motors with real time shade status and battery feedback. The intuitive Set & Go® Connect App makes programming and set up simple.

Find out more about the Somfy WireFree line up



Scan this code or click here to watch

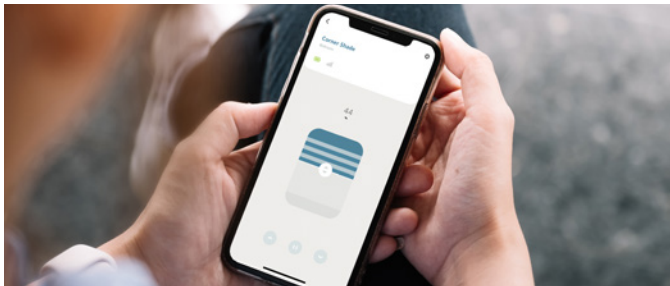
POWERWAND



Our PowerWand system lifts and lowers shades with the touch of a button. It offers rechargeable battery powered control for budget friendly motorized operation. Multiple wand color offerings and improved attachment offer style and function.

AUTOMATION *from Alta*

WHY AUTOMATION?



SIMPLIFY THE EVERYDAY

Beauty & Light Control

- No operating cords to distract from the beauty of the window covering
- Light control on demand with the touch of a button or an app
- Shades can be scheduled automatically to open and close when needed

Privacy & Security

- Schedule shades to close at dusk and raise at dawn
- Open or close shades using an app at home or while away
- Safely operate tall or hard-to-reach windows

Energy Efficiency & UV Protection

- Block heat and cold resulting in lower heating and cooling bills
- Shades can be set to open and close during specific times during the day
- Prevent harmful UV rays from damaging interior furnishings

Home Automation Integration

- Integrate automated window coverings with a compatible smart home system to synchronize light and privacy control for maximum comfort and convenience.

Alta Advantage SAFETY

We care about your kids. And pets, too. So when it comes to safety, we take our role seriously, beyond design and operation to awareness and education. We proudly carry the “Best for Kids” designation. Why? Tough independent laboratory testing proves it.



AUTOMATION *from Alta*

KEY TERMS TO KNOW

AC Wired Motors - AC motors require 120 VAC of electricity which is found in a typical outlet in a home or office. AC motors are either plugged into an outlet with a standard AC plug or require wiring by a licensed electrician.

Bi-directional Communication - This means that the control and position information can flow back and forth (2 way) from a controller/bridge to the motor and from the motor back to a controller/bridge. This allows the shade status to always be known.

Channel - Channels are used to organize motorized window coverings with their control options. A channel is either associated with a single motorized window covering or a group of motorized window coverings.

DC Motorization (Plug-in) - Shades are powered by an external battery or 12V / 24V DC transformer/plug similar to a cell phone charger. Low voltage wires are used so an electrician is not required, keeping installation costs minimal. Most DC motors can also be wired to a central distribution panel eliminating the need for multiple power adapters.

Distribution Power Panel: Is a Dedicated, single power input for multiple power outputs. It is an enclosure that individual low voltage motors are connected to.

Favorite Position - This feature allows users to save preferred positions for their motorized window coverings. This memory feature provides quick access without having to fine tune the position of any given shade each time. Save it once and its always available.

Group Control - Group Control is when multiple motorized window coverings all respond to a signal at the same time and raise and lower accordingly. This is available with radio frequency communication products including handheld remotes, wireless wall switches and smartphone app.

Hardwired - This is an available power option in which the motor is wired directly to the home or building's electrical system for AC motors, or run back to a power and distribution panel for DC motors. It offers maintenance-free operation. The AC motor option requires a licensed electrician. For DC motor option an electrician is recommended.

Individual Control - Individual Control is when multiple motorized window coverings need to receive separate signals in order to raise or lower individually.

Limits - Limits represent the location where the motorized window covering starts and stops. There is an upper limit which is where the window covering stops when the UP button is pressed and a lower limit which is where the window covering stops when the DOWN button is pressed. Both the upper and lower limits are programmed and depend on the user's preference. These are typically set during fabrication according to the ordered window size.

Lithium Batteries (Li-ion) - Lithium batteries offer a greater heat tolerance, which is especially important in window applications.

"MY" Button (Somfy) - This button on the remote-control acts as a stop button when the motorized window covering is in motion. It also sends the shade to the programmed intermediate position when the shade is already stopped.

Newton Meter (Nm) - Nm is used as a unit of measure for torque in automation motors. Motors with higher Nm ratings can lift larger, heavier shades.

Power Panel - Common enclosure box designed for 12V or 24V DC motors.

Radio Frequency (RF) - Radio frequency is another protocol that motors use with their control options. Direct line-of-sight is not required to send a signal to a motor but similar to a garage door opener, the motor must be within range to operate. RF allows for either individual control or group control. It offers simplified integration with home automation.

Rechargeable Battery/WireFree (Internal or External) - Requires no electrical wiring and no complicated installation. Motors will operate 6-9 months between charges based on average size and daily use. Li-ion batteries can be recharged up to 500 times and take approximately 5 hours to fully recharge. Requires the purchase of at least one charger.

Wi-Fi Bridge / Hub - A Wi-Fi Bridge or Hub is the central area of communication between devices for automation and control. Once connected to a Wi-Fi network, it enables operation of motors from a smartphone with the use of an app. The bridge/hub also integrates with a variety of smart home platforms and home automation systems for complete customization of window covering control.

AUTOMATION *from Alta*

AT A GLANCE AVAILABILITY

SYSTEM		BLISS AUTOMATION	SOMFY AUTOMATION		POWERWAND
			RTS	Zigbee	
PRODUCTS	Dual Shades	✓	✓	✓	✓
	Faux Wood (tilt)	✓	✓		
	Honeycomb Shades	Bottom-Up or TD/BU	Bottom-Up <i>new!</i> Skylight		Bottom-Up, <i>new!</i> 2 on 1
	Natural Wovens	✓	✓	✓	
	Roller Basics	✓			
	Roller Shades	✓	✓	✓	✓
	Window Shadings	✓	✓	✓	✓
	Wood Blinds (tilt)	✓	✓		
MOTOR FEATURE	Real Time Shade & Battery Status	✓		✓	
	Adjustable Speed Motors	✓	✓	✓	
	Motor Sound Level	🔊)	🔊	🔊)	🔊)
	Motor Strength Levels	🔧 🔧	🔧 🔧 🔧	🔧 🔧 🔧 🔧	🔧
POWER OPTIONS	Rechargeable Li-ion Battery	✓	✓	✓	✓
	Reloadable Battery Wand		✓	✓	
	Solar Power Option	✓	✓	✓	
	Hardwired Power		✓	✓	
	Plug-In Power	<i>new!</i>	✓	✓	
	Distribution Power Panel	<i>new!</i>	<i>new!</i>		
CONTROL TYPES	Remote Control	✓	✓	✓	
	Wall Switch	✓	✓		
	Smartphone/Tablet (via app)	✓	✓	✓	
AUTOMATION FEATURES	App Compatible	✓	✓	✓	
	Wi-Fi Bridge (Hub)	✓	✓	✓	
	Home Automation Integration	✓	✓	✓	
	Voice Control Operation	✓	✓	✓	

Rechargeable motors require the purchase of plug-in charger (at least one per order).

Wi-Fi Bridge/interface is required for app, voice control and home automation integration.

The Solar Power option is intended as a recharging option and should not be considered an independent power supply.

AUTOMATION BASICS

WHAT YOU NEED TO KNOW

Bridges/Hubs need a 2.4 GHz wireless network in order to connect

[Use this checklist of network and equipment compatibility requirements to ensure a smooth setup.](#)

Shades will arrive with the upper and lower limits set

With the exception of Roller Basics, automated window coverings will always have the upper and lower limits set with the shade being fully open or closed. Additional pairing and further programming may be required on-site.

Shades will raise/lower at different speeds

When operating a group of motorized window coverings on the same channel, there should be no expectation that each shade or blind will raise, lower or tilt and the exact same speed. Variations in the battery charge, wire run length or the size of the shade will affect the shade/blind performance.

Batteries will arrive fully charged

We fully charge all batteries before they leave our factory, it is important for installers to keep an extra charger handy just in case this needs to be done on site.

Motor may be in Sleep Mode (inactivated)

To preventing motors from being activated during transit, they are placed in sleep mode. Please follow programming instruction to activate the motor before pairing to the remote.

Best practices for all motor systems

Metal can impede radio reception and may have a negative effect which will lower the range. For optimal radio performance it is best to have the motor antenna exposed at all times without interfering with movement of the shade.

AUTOMATION STEP-BY-STEP CHECKLIST

STEP 1 - CHOOSE THE MOTOR

- Be sure to double check the minimum and maximum sizes that the motor will be able to accommodate, this will vary depending on the configuration.
- Some products do not have a choice of motor options. For narrow or very large Roller Shades, you may be prompted to select a different motor size.

STEP 2 - CHOOSE OR CONFIRM THE POWER SOURCE FOR THE GIVEN MOTOR

If the motor you selected is powered by:

- External Battery Pack: Be sure to order a charger or if needed a Solar Panel kit. Will you need a battery pack extension or charger extension? Best practice is to have several chargers for each floor of end-user's home.
- Built in Rechargeable Battery: Be sure to order a charger or if needed a Solar Panel kit. Will you need a charger extension?
- Plug-in Transformer: Great option for high windows; will you need a longer cord for any of the shades? Is there a power source near by?
- Hardwired: Will you need longer cable for any of the shades?
- Distribution Power Panel: This may be a good option depending on the motor and application.

STEP 3 - CHOOSE YOUR CONTROL OPTIONS

- Remote Control: One per order is usually needed and helps to speed up programming of shades
- Wall Switch: Not sure? These can always be added to an order after installation
- App or Voice Control: A Bridge to connect the shades to the network will be needed. Keep in mind, larger homes and buildings may require multiple Bridges be purchased.

STEP 4 - HOME AUTOMATION / VOICE COMMAND

- Will you need to integrate to a third party system or do you plan on using Google Assistant or Amazon Alexa?
- If so, be sure to order a Bridge to connect shades to the home network.
- Somfy ZigBee: TaHoma Gateway is necessary in all installations

STEP 5 - ACCESSORIES

- Solar Panel Kit, not sure if this is an option? [Check the Solar Panel Tips and Considerations page for help.](#)
- Will reaching the charging port be an issue? The Magnetic Charging Kit (BLISS) is useful for hard to reach windows.
- Smart Plugs (Somfy Zigbee)

AUTOMATION LINE UP QUICK GUIDE

	Motor Name	Main Power Source	Solar Charging Option	Sound Level decibels lower=quieter	Motor Voltage	Motor Torque	Adjustable Speed Motor	Speed Range rpm
BLISS by Alta	BLISS Lift 0.6 DC new name and power options	External Rechargeable Battery Pack, new Transformer, new Distribution Power Panel		~48 dB	12V	0.6 Nm	•	34 default 40 or 50
	Bliss Lift BU 0.6 Li-ion new name	Internal Rechargeable Li-ion Battery	•	~48 dB	12V	0.6 Nm	•	34 default 40 or 50
	Bliss Lift TDBU 0.6 Li-ion new name	Internal Rechargeable Li-ion Battery	•	~48 dB	8V	0.6 Nm	•	34 default 40 or 50
	BLISS Tilt DC new name and power options	External Rechargeable Battery Pack, new Transformer, new Distribution Power Panel		~50 dB	12V	0.6 Nm	•	12 default 15 or 20
	BLISS 1.1 DC new name and power options	External Rechargeable Battery Pack, new Transformer, new Distribution Power Panel		~46 dB	12V	1.1 Nm	•	20 default 24 or 28
	BLISS 1.1 Li-ion new name	Built-in Rechargeable Li-ion Battery	•	~46 dB	8V	1.1 Nm	•	20 default 24 or 28
	BLISS 2.0 Li-ion new name	Built-in Rechargeable Li-ion Battery	•	~47 dB	12V	2.0 Nm	•	20 default 24 or 28
	BLISS 3.0 Li-ion new name	Built-in Rechargeable Li-ion Battery	•	~53 dB	12V	6.0 Nm	•	20 default 16 or 24
Somfy RTS	Cord Lift WireFree TL25 RTS 	Battery Wand, External Rechargeable Li-ion Battery, Transformer	•	<50 dB	12V	0.8 Nm	•	30 default 15-30
	Tilt Only 50 WireFree RTS	External Rechargeable Li-ion Battery Pack	•	<56 dB	12V	1.0 Nm	•	10 default 5-15
	Sonesse 28 WireFree RTS Li-ion 	Built-in Rechargeable Li-ion Battery	•	<= 44 dB	12V	1.1 Nm	•	20 default 10-28
	Sonesse 28 WireFree RTS DC 	Battery Wand, External Rechargeable Li-ion Battery, Transformer	•	<= 44 dB	12V	1.1 Nm	•	20 default 10-28
	Sonesse ULTRA 30 WireFree RTS Li-ion 	Built-in Rechargeable Li-ion Battery	•	<= 42 dB	12V	2.0 Nm	•	20 default 10-28
	Sonesse 40 WireFree RTS Li-ion 	Built-in Rechargeable Li-ion Battery	•	<= 44 dB	12V	3.0 Nm	•	20 default 10-28
	Sonesse 30 RTS 24V DC new power options 	Weidmüller Power Cable, new Transformer, new Distribution Power Panel		<= 42 dB	24V	2.0 Nm	•	25 default 6-28
	Sonesse 50 RTS AC 	Hardwired		<= 44 dB	120V	6.0 Nm		32
	Sonesse ULTRA 50 RTS AC 	Hardwired		<= 38 dB	120V	6.0 Nm		24
Somfy Zigbee	Sonesse 28 WireFree Zigbee Li-ion 	Built-in Rechargeable Li-ion Battery	•	<= 44 dB	12V	1.1 Nm	•	20 default 10-28
	Sonesse 28 WireFree Zigbee DC 	Battery Wand, External Rechargeable Li-ion Battery, Plug-in Transformer	•	<= 44 dB	12V	1.1 Nm	•	20 default 10-28
	Sonesse ULTRA 30 WireFree Zigbee Li-ion 	Built-in Rechargeable Li-ion Battery	•	<= 42 dB	12V	2.0 Nm	•	20 default 10-28
	Sonesse 40 AC Zigbee 	Hardwired		<= 42 dB	120V	4.0 Nm		36
PowerWand	PowerWand Dual, Roller, Window Shadings	Built-in Rechargeable Li-ion Battery		~47 dB	8V	1.0 Nm		28
	PowerWand Honeycomb bottom-up	Internal Rechargeable Li-ion Battery Pack		~47 dB	8V	0.6 Nm		34



The Sonesse range of motors are rated according to their quietness. The volume scale designates the motor's level of sound output.

AUTOMATION *from Alta*

AUTOMATION LINE UP QUICK GUIDE - continued

	Motor Name	LED Low Battery Indicator	Dual Shades	Faux/Wood (tilt)	Honeycomb - bottom-up	Honeycomb top-down/bottom-up	Natural Wovens	Roller Basics	Roller Shades	Window Shadings	Real Time Shade & Battery Status	App Control phone / tablet	Voice Command Operation	Third Party Automation Integration
BLISS by Alta	BLISS Lift DC				•						•	•	•	•
	Bliss Lift BU Li-ion				•						•	•	•	•
	Bliss Lift TDBU Li-ion					•					•	•	•	•
	BLISS Tilt DC			•							•	•	•	•
	BLISS 1.1 DC	•	•				•	•	•	•	•	•	•	•
	BLISS 1.1 Li-ion	•	•				•	•	•	•	•	•	•	•
	BLISS 2.0 Li-ion	•	new				•		•		•	•	•	•
	BLISS 3.0 Li-ion	•							•		•	•	•	•
Somfy RTS	Cord Lift WireFree TL25 RTS				•							•	•	•
	Tilt Only 50 WireFree RTS			•								•	•	•
	Sonesse 28 WireFree RTS Li-ion	•	•				•		•	•		•	•	•
	Sonesse 28 WireFree RTS DC	•	•				•		•	•		•	•	•
	Sonesse ULTRA 30 WireFree RTS Li-ion	•	new				new		•			•	•	•
	Sonesse 40 WireFree RTS Li-ion	•							•			•	•	•
	Sonesse 30 RTS 24V DC		new				new		•			•	•	•
	Sonesse 50 RTS AC								•			•	•	•
	Sonesse ULTRA 50 RTS AC								•			•	•	•
Somfy Zigbee	Sonesse 28 WireFree Zigbee Li-ion	•	•				•		•	•	•	•	•	•
	Sonesse 28 WireFree Zigbee DC	•	•				•		•	•	•	•	•	•
	Sonesse ULTRA 30 WireFree Zigbee Li-ion	•	new				•		•		•	•	•	•
	Sonesse 40 AC Zigbee								•		•	•	•	•
PowerWand	PowerWand Dual, Roller, Window Shadings		•						•	•				
	PowerWand Honeycomb bottom-up				•									





BLISS[™]
AUTOMATION
by **ALTA**

AUTOMATION *from Alta*

BLISS™ AUTOMATION

AUTOMATION FOR LIFE

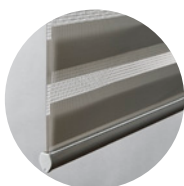


Enjoy a new level of purposeful ease with our range of BLISS™ Automation by Alta systems and power options. From the wirefree convenience of our DC or Li-ion motors to the power of voice control operation, BLISS Automation is a solid solution for advanced yet simple light control and well connected design.

FEATURES:

- **new** power offerings provide endless automation options to the already large BLISS Automation range for whole home, cord-free operation designed to be used time and time again. Plus, the strong 2-way radio communication assures a reliable connection for real time monitoring of motor battery life and shade status.
- Choose from multiple power option on Bliss Lift Honeycomb motor. Top-Down/Bottom-Up feature is also available
- BLISS USB Bridge supports seamless integration with third party automation systems like Control4 to allow for a well connected smart home.
- BLISS Magnetic Charging Kit makes charging effortless, convenient to use. No more fiddling around trying to get the charger into the charging port.
- Say goodbye to batteries with state-of-the-art lithium-ion rechargeable batteries that can last up to 500 up/down cycles on a single charge.
- Gain ultimate control using features like timers and scenes each set to any need, at home or away using the BLISS™ Automation by Alta app.

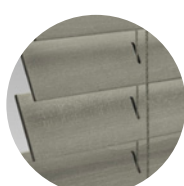
AVAILABLE ON:



Dual Shades



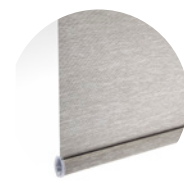
Honeycomb Shades



Faux Wood



Natural Wovens



Roller Basics Roller Shades



Window Shadings



Wood Blinds

BLISS™ AUTOMATION

FREQUENTLY ASKED QUESTIONS

What is BLISS Automation?

The BLISS Automation Program brings the power of automated motors to your window treatments, integrating BLISS controls, Google Assistant, Amazon Alexa and the BLISS app with other home integration devices to create the perfect ambiance morning, noon and night.

What is the range of products that can be motorized with BLISS?

The BLISS Automation portfolio is a comprehensive range of motors for a variety of motorized window coverings, including Roller Shades, Woven, Honeycomb Shades, Window Shadings, Dual Shades and Horizontal Tilt Blinds.

What is the warranty?

BLISS motors are covered by a 5 year warranty.

How do BLISS Motors Communicate?

BLISS Motors use radio frequency (RF) to communicate and is the most effective telecommunication technology. BLISS runs on a frequency of 433.92 MHz and is bi-directional, which means that control and position information can flow from a controller/bridge to the motor and from the motor back to a controller/bridge.

How many BLISS automated window covering motors can be controlled by a hand held remote?

An unlimited number of window covering motors can be set to the same channel as one single channel remote, and BLISS remotes have up to 15 channels.

How does the BLISS Bridge communicate?

The BLISS USB Bridge uses Wi-Fi to communicate with mobile devices and internet routers. They also utilizes radio frequency (RF) communication to send and receive messages to BLISS motors. The BLISS Bridge has a range of up to 60ft.

Does the motor battery ever need to be replaced?

No, the battery is designed for the full life of the motor.

How long will the battery last before it needs to be recharged?

It depends on many factors like the size and weight of the window covering that the motor is operating long with how many times a day it is operated. Generally, each charge will last approximately 500 up/down cycles on a single charge.

How long does it take to fully charge the motor?

The first charge will take 6 subsequent hours of charging. You cannot over charge the battery. The motor and battery both have integrated overcharge protection circuits. This means that the battery will limit the charge it will accept if plugged in longer than necessary and the motor turns into a hard-wired solution with a battery backup.

Can I use my cell phone charger to charge the motor?

Yes, the motor/battery will accept any Micro-USB charger. Make sure to use a 5V charger in order to charge BLISS motors properly.

What is channel 0 for on my remote control?

All motors that are programmed to the same remote, automatically respond to channel 0. For example, on channel 0, pressing the up button will move all blinds that are programmed to that remote up.

Can I hide channels that being used on my remote control?

Yes, you can hide unused channels in your BLISS remote, e.g. if there are 5 motors on the job you can select it to be a 5-channel remote. [Link to the BLISS Remote Control - How to Hide Channels Video](#)

Can I lock the remote control to save the programming functions from being accidentally changed?

Yes, the remote control contains a switch on the backside that is used to lock the remote control and save all of the programming. [Link to the BLISS Remote Control Users Guide](#)

AUTOMATION *from Alta*

BLISS™ AUTOMATION

AT A GLANCE MOTOR AVAILABILITY

MOTOR	POWER	Dual Shades	Faux/ Wood Blinds	Honeycomb Shades	Natural Wovens	Roller Basics	Roller Shades	Window Shadings	Home Automation Compatible*
<i>new name</i> BLISS Lift 0.6 DC	External Rechargeable Batt. Pack, <i>new</i> Transformer, <i>new</i> Dist. Power Panel			✓ Bottom-Up					✓
<i>new name</i> BLISS Lift BU 0.6 Li-ion	Internal Rechargeable Battery			✓ Bottom-Up					✓
<i>new name</i> BLISS Lift TDBU 0.6 Li-ion	Internal Rechargeable Battery			✓ Top-Down/ Bottom-Up					✓
<i>new name</i> BLISS Tilt DC	External Rechargeable Batt. Pack, <i>new</i> Transformer, <i>new</i> Dist. Power Panel		✓						✓
<i>new name</i> BLISS 1.1 DC	External Rechargeable Batt. Pack, <i>new</i> Transformer, <i>new</i> Dist. Power Panel	✓			✓	✓	✓	✓	✓
<i>new name</i> BLISS 1.1 Li-ion	Built-in Rechargeable Li-ion battery	✓			✓	✓	✓	✓	✓
<i>new name</i> BLISS 2.0 Li-ion	Built-in Rechargeable Li-ion battery	<i>new</i>			✓		✓		✓
<i>new name</i> BLISS 3.0 Li-ion	Built-in Rechargeable Li-ion battery						✓		✓

Li-ion or DC motors with external rechargeable battery pack require the purchase of plug-in charger (recommend one per order).
 *A BLISS Bridge is required for app, voice command and home automation systems.

COMPATIBLE THIRD PARTY HOME AUTOMATION SYSTEM:



Scan this code or
 Click here to watch the
 How to Set up Google
 Home video



Scan this code or
 Click here to watch the
 How to Set up Amazon
 Alexa Skills video

BLISS™ AUTOMATION

MOTOR OPTIONS

MOTOR OPTIONS:

BLISS Lift 0.6 DC

Honeycomb and Cellular Shades



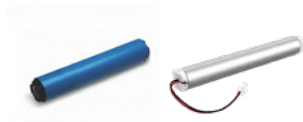
Bottom-Up Lift Motor

- 0.6 Nm DC Radio Frequency 12V motor
- Requires power source be selected upon ordering
- Adjustable speed setting: 40-50 rpm (default 34 rpm)
- Sound level ~48dB
- Min Width: 18" Max Width: 120"

Power Supply: External Rechargeable Battery Pack, Transformer, Distribution Power Panel

BLISS Lift BU 0.6 Li-ion

Honeycomb and Cellular Shades



- Bottom-Up motor features an internal rechargeable battery
- Internal battery has easier access to charging port and reset button
- 0.6 Nm DC 12V Radio Frequency motor
- Adjustable speed setting: 40 or 50 rpm (default: 34 rpm)
- Sound level ~48dB
- Min Width: 18.125" Max Width: 120"
- Internal Battery not available on 1-1/4" or Dimensions
- Min Per Panel Width for 2 on 1: 20"

Power Supply: Battery Charger, Solar Panel

BLISS Lift TDBU 0.6 Li-ion

Honeycomb and Cellular Shades



Top-Down/Bottom-Up Motors
with internal rechargeable battery pack

- 0.6 Nm Radio Frequency 8V TDBU motor
- Features an internal rechargeable battery pack
- Adjustable speed setting: 40-50 rpm (default 34 rpm)
- Sound level ~48dB
- TD/BU is not available with 1-1/4" cell size or Dimensions
- Min Width Right side Charging Port and Reset: 30" net / Max Width: 120"
- Min Width Left side Charging Port and Reset: 35" net / Max Width: 120"
- Min Per Panel Width for 2 on 1: 20"

Power Supply: Battery Charger, Solar Panel

The minimum and maximum sizes listed are for the given motor system and may vary depending of the product, fabric and features selected. See individual product Retail Price List for details.

BLISS™ AUTOMATION

MOTOR OPTIONS

MOTOR OPTIONS:

BLISS Tilt DC

Faux/Wood



- 1.0 Nm DC tilt Radio Frequency motor
- Requires power source be selected upon ordering
- Adjustable speed setting: 15 or 20 rpm (default: 12 rpm)
- Sound level ~50dB
- Not available on blinds with Lift & Lock
- Min Width: 20" / Max Width: 96"

Power Supply: External Rechargeable Battery Pack, Transformer, Distribution Power Panel

BLISS 1.1 DC

Dual Shades/Natural Woven/Roller Basics /Roller Shades/Window Shadings



- 1.1 Nm Radio Frequency DC motor
- Requires power source be selected upon ordering (Roller Basics shade are only available with the External Rechargeable Battery Pack)
- Lasts up to 500 up/down cycles on a single charge
- LED low battery indicator
- Adjustable speed control: 24 or 28 rpm (default: 20 rpm)
- Sound level ~46dB
- Designed for small-sized shades
- Min Width Dual Shades: 16" net / Max Width: Varies by fabric
- Min Width Natural Wovens: 18" net / Max Width: Varies by fabric
- Min Width Roller Shades: 16 1/2" net / Max Width: Varies by fabric
- Min Width for Roller Shades w/Deluxe Valance or Fabric Cornice: 18" net
- Min Width Window Shadings: 19" net / Max Width: Varies by fabric

Power Supply: External Rechargeable Battery Pack, Transformer, Distribution Power Panel

The minimum and maximum sizes listed are for the given motor system and may vary depending of the product, fabric and features selected. See individual product Retail Price List for details.

BLISS™ AUTOMATION

MOTOR OPTIONS

MOTOR OPTIONS:

BLISS 1.1 Li-ion

Dual Shades/Natural Woven/Roller Basics/Roller Shades/Window Shadings



- 1.1 Nm RF motor with built-in rechargeable 8V lithium-ion battery
 - Lasts up to 500 up/down cycles on a single charge
 - LED low battery indicator
 - Adjustable speed control: 24 or 28 rpm (default: 20 rpm)
 - Sound level ~46dB
 - Designed for small to medium sized shades
 - Min Width Dual Shades: 24" net / Max Width: Varies by fabric
 - Min Width Natural Wovens: 30" net / Max Width: Varies by fabric
 - Min Width Roller Shades: 21" net / Max Width: Varies by fabric
 - Min Width Window Shadings: 24" net / Max Width: Varies by fabric
- Power Supply: Battery Charger, Solar Panel

BLISS 2.0 Li-ion

Dual Shades *new!*/Natural Woven/Roller Shades



- 2 Nm RF motor with built-in rechargeable 12V lithium-ion battery
 - Lasts up to 500 up/down cycles on a single charge
 - LED low battery indicator
 - Adjustable speed control: 24 or 28 rpm (default: 20 rpm)
 - Sound level ~47dB
 - Designed for medium-large sized shades
 - Min Width Dual Shades: 28" net / Max Width: Varies by fabric
 - Min Width Natural Woven: 35" net / Max Width: Varies by fabric
 - Min Width Roller Shades: 29" net / Max Width: Varies by fabric
- Power Supply: Battery Charger, Solar Panel

BLISS 3.0 Li-ion

Roller Shades



- 6 Nm RF motor with built-in rechargeable 12V lithium-ion battery
 - Lasts up to 500 up/down cycles on a single charge
 - LED low battery indicator
 - Adjustable speed control: 16 or 24 rpm (default: 20 rpm)
 - Sound level 53dB
 - Designed for medium-large sized shades
 - Min Width Roller Shades: 33" net - Varies by tube size
- Power Supply: Battery Charger, Solar Panel

BLISS BATTERY CHARGING AND STATUS INDICATORS:

Internal Rechargeable Battery

During operation, if the motor begins to beep, this is an indicator to let users know the motor power is low and needs to be charged. To charge, plug the micro-USB port on the motor into the 5V/2A charger.

Status Indicators

- Blinking Red Light: Low Battery Alert
- Blinking Green Light: Charging in Process
- Solid Green Light: Charging Complete

External Rechargeable Battery

During operation, if the voltage is detected to be too low, the battery stops running and needs to be re-charged. To charge, plug the micro-USB port on the end of the battery pack into the 5V/2A charger.

Status Indicators

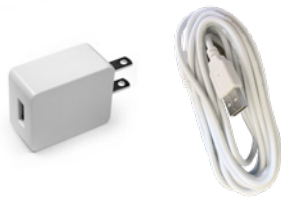
- Solid Red: Charging in Process
- Solid Green Light: Charging Complete

BLISS™ AUTOMATION

POWER & ADDITIONAL OPTIONS

POWER SOURCES:

BLISS Charger



- Used to charge BLISS motors (1 per order is recommended)
- Fully charges motors in 4-6 hours
- Built in LED indicator
- The charging cable is 156" long
- Charger extension cables are available in 8" or 48" lengths and can be daisy chained together to create longer lengths

BLISS Magnetic Charging Kit



- Convenient accessory is available on all BLISS motors
- 2 types of magnetic attachments - vertical or 90 degree
- 90 degree magnetic charging kit is used with the honeycomb TD/BU and tilt motors
- Useful for hard to reach or high windows where reaching the charging port may be an issue
- Includes magnetic tip and 24" long connector cable
- Additional magnetic tips may be purchased separately

[Link to the BLISS Magnetic Charging Kit Users Video](#)

BLISS External Battery Pack



- Standard power source for BLISS DC motors
- Lasts up to 500 up/down cycles on a single charge
- Rechargeable Li-ion battery, recharges in approximately 6 hours
- Dimensions: 10.44" L x 1" W x 1" D

BLISS Solar Panel



- Utilize sunlight to harvest power for BLISS motorized shades
- One Solar Panel per shade or blind is needed
- Easy to install and the low profile design is easy to conceal
- 5V Charger with renewable solar energy
- Compatible with BLISS Li-ion motors and BLISS external battery pack
- Not recommended on north facing windows
- Micro USB charging cable, 59" long (included)
- Dimensions: 18.7" L x 2" W x .30" D

[Link to the BLISS Solar Panel Installation Guide](#)

BLISS™ AUTOMATION

POWER & ADDITIONAL OPTIONS

POWER SOURCES:

12V DC Plug-in Transformer *new!*



- Power source for Bliss DC motors
- Not available on Roller Basics
- Plug-in wall plug power supply for 1 motor, comes with a 5 ft. cable
- The compact design offers better efficiency and creates less inherent heat
- Slim design allows for multiple appliances to use the same dual power socket

15V DC Distribution Power Panel – 18 motor *new!*



- Power up to 18 DC motors from a central location
- Not available on Roller Basics
- Locking cabinet provides protection from unwated access
- Easily check each motor status by viewing LED's on the DC power panel
- Panel can be used with many different wire types (from 26 to 14 AWG)
- Panel and power cord will ship in separate boxes
- Dimensions: 9.27" W x 12.65: H x 2.47" D

[Link to 15V DC Distribution Power Panel Guide](#)

BLISS™ AUTOMATION

CONTROL OPTIONS

CONTROL OPTIONS:

BLISS 15 Channel Remote



- Operates an unlimited number of BLISS automated window coverings
- 15 Channel remote features a contemporary design with push button controls
- Activate the favorite position with a touch of a button
- Locking feature to prevent accidental programming changes
- Hide unused channels for faster channel selection and scrolling
- A convenient holder allows the remote to be mounted on a wall
- Dimensions: 5.5" L x 1.69 W

[Link to the BLISS Remote Control Programming and Users Guide](#)

BLISS 16 Channel Top-Down/Bottom-Up Combination Remote



- Channels 1-5 operate TD/BU honeycomb shades, Channels 6-16 operate standard BLISS automated shades
- Activate the favorite position with a touch of a button
- Locking feature to prevent accidental programming changes
- Hide unused channels for faster channel selection and scrolling
- A convenient holder allows the remote to be mounted on a wall
- Dimensions: 5.5" L x 1.69 W

[Link to the BLISS TD/BU Remote Control Programming and Users Guide](#)

BLISS 15 Channel Surface Mounted Wall Switch



- Operates an unlimited number of BLISS motorized window coverings
- Features a clean, modern design with easy to use controls
- Activate group control and favorite position with a touch of a button
- Locking feature to prevent accidental programming changes
- Hide unused channels for faster channel selection and scrolling
- No need to cut in to wall with the wireless design
- Dimensions: 3.4" L x 3.4" W x 0.7" D

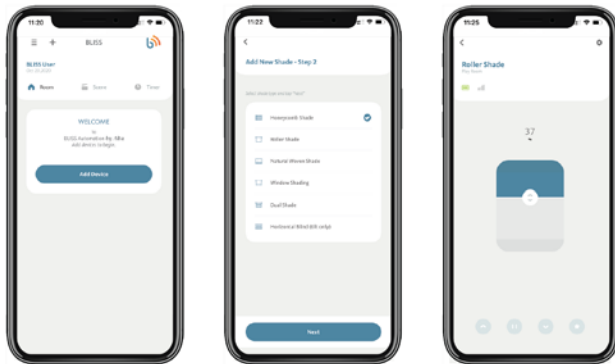
[Link to the BLISS Wall Switch Guide](#)

BLISS App



- Enable simple, intuitive control from any smartphone
- Compatible with both iOS and Android devices
- Features like scheduling and remote access allow users to control motorized window coverings at home or while away
- Purchase of BLISS Bridge is required for use with app

[Link to How to set up the BLISS App Video](#)



[Click icon to download](#)

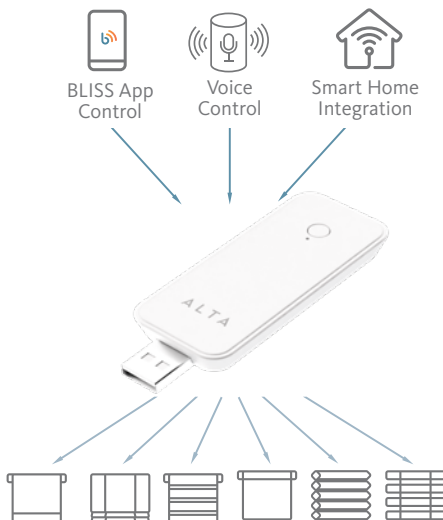


[Click icon to download](#)



[Click or Scan to Find out more about BLISS Automation by Alta](#)

BLISS USB Bridge



- **Compatible with 2.4 GHz networks only (802.11 b/n/g)**
- **A USB power supply (sold separately) must provide 5V/1 Amp of power**
- **Use this checklist of network and equipment compatibility requirements to ensure a smooth setup**
- The BLISS Bridge connects to home networks to allow window coverings to be controlled via the BLISS App, voice control or through additional connected IFTTT systems
- Allows 2-way radio frequency communication between motors and devices
- Easy to install USB device to any Wi-Fi connection, just Plug & Play
- Covers a range of 60 feet, larger homes may require additional bridges
- Seamless integration with Amazon Alexa, Google Assistant, Apple Shortcuts, Siri, SmartThings, and IFTTT
- Smart phone version: Apple IOS-10 or greater / Android-4.1 or greater
- Connect up to 30 devices per Bridge, up to 5 accounts
- Connect up to 5 accounts per Bridge
- Connect up to 5 Bridges per location: 20 rooms / 20 scenes / 20 Timers
- 5V/2A Charging block is available (sold separately)
- Dimensions: 3.5" L x 1.25" W

[Link to the BLISS USB Bridge Quick Start Guide](#)

BLISS™ AUTOMATION

SOLAR PANEL TIPS AND CONSIDERATIONS

WHAT YOU NEED TO KNOW ABOUT SOLAR POWER:

Consider the geographic location of the installation

Understanding the sun's motion relative to a site is a crucial element to predict the solar panel performance. A solar panel located in Texas will harvest more energy than a unit installed in the Northern US (considering both facing south, using similar window).

Consider the direction the window is facing

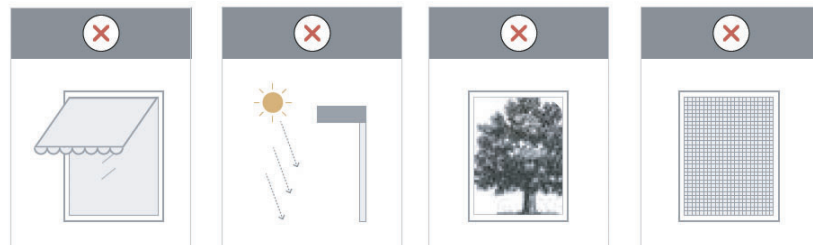
The Solar Panel may not be a good fit for every window. In the summer, the sun rises higher in the sky than in the winter months. The further north, the lower the midday winter sun will be. Due to the sun's position, Solar panels installed facing north produce 4 times less energy than a device installed facing south. For this reason, we do not recommend the use of solar panel on windows facing North.

Define the best location to install

The solar panel is designed for indoor use only. To maximize the performance of the solar panel, it should be installed as close as possible to the window glass, allowing as much natural light as possible to reach the panel. Any element between the Sun light and the solar panel will impact the charging time, and in some situations, inhibit its use.

Things to consider:

- Awnings
- Deep Eaves
- Trees
- Tall buildings and walls
- Insect Screen



Other not so obvious elements can result in low performance of the solar panel, such as:

- Tinted windows
- High performance glass (also known as energy efficiency glass)
- Multi panel glass
- Any window with treatment that reduces the light transmission below 65%
- Window dividers overlapping solar panel

How efficient my solar panel will perform?

Besides all of the elements described above impacting how much energy will be harvested from the sun, there is also the question of how fast the energy will be drained due to:

- Shade composition (fabric weight)
- Number of cycles per day
- Size of shade (how long the motor will run per cycle)

The answer for these questions should be considered to evaluate if solar panel is the best fit for the application. Keep in mind, each shade/blind will need its own solar panel to connect to.

For additional Solar Panel installation information, please refer to the [BLISS Solar Panel Installation Guide](#).

BLISS™ AUTOMATION

INFORMATION & PRICING

ROLLER SHADE TOP TREATMENT AND CONTROL SIDES BY MOTOR

Motor	No Top Treatment	Deluxe Valance	Fabric Cornice	Curved Cassette	Square Cassette	R-Series Fascia	Skyline Fascia	Pocket
BLISS 1.1	Both	Both	Both	Both	Both	NA	Both	Both
BLISS 2.0	Both	Both	Both	Both	Both	NA	Both	Both
BLISS 3.0	Both	Both	Both	Both	Both	NA	Both	Both

RETAIL SURCHARGES

The Automation cost factor is different from blinds/shades. If you need to access your cost factor, refer to page 4 in the General Information Guide.

MOTOR SYSTEMS

BLISS Lift 0.6 DC (surcharge includes motor only, need to select power source)	\$210
BLISS Lift BU 0.6 Li-ion (surcharge includes power source)	\$300
BLISS Lift TDBU Li-ion	\$360
BLISS Tilt DC (surcharge includes motor only, need to select power source)	\$210
BLISS 1.1 DC (surcharge includes motor only, need to select power source)	\$210
BLISS 1.1 Li-ion	\$300
BLISS 2.0 Li-ion	\$360
BLISS 3.0 Li-ion	\$420

PRICING

POWER ACCESSORIES

BLISS Plug In Charger Kit (1027720)	\$30
BLISS 8" Charger Cable - charger to battery (62206700)	\$6
BLISS 48" Charger Cable - charger to battery (62206800)	\$10
BLISS Magnetic Charging Kit Includes: magnetic connector cable + tip (1026665)	\$40
BLISS Magnetic Charging Kit - 90 Degree - TD/BU and Tilt motors (1027769)	\$40
BLISS Magnetic Charging Tip (62206200)	\$6
BLISS External Battery Pack (62203300)	\$90
BLISS External Battery Pack 48" Extension - motor to battery (62207000)	\$6
BLISS Solar Panel (62201000)	\$120
new 12 V Plug-in Transformer (62209000)	\$40
new 15V DC Power Distribution Panel - 18 Motor with cord (1037300 & 1037301)	\$500

PRICING

CONTROL OPTIONS & ACCESSORIES

BLISS 15 Channel Hand Held Remote (1026655)	\$50
BLISS 16 Channel Top-Down/Bottom-Up Hand Held Remote (1026656)	\$50
BLISS 15 Channel Surface Mounted Wall Switch (1026657)	\$50
BLISS USB Bridge (1026654)	\$100
BLISS USB Charging Block 5V/2A (62200000)	\$10

PRICING

The above pricing represents the motorization surcharge that needs to be added to the price of a single blind. Refer to the individual product reference guides for additional pricing and surcharge information.

BLISS™ AUTOMATION

QR CODE QUICK LINKS

CHECK OUT OUR HOW TO PROGRAMMING AND BLISS APP VIDEOS

How to Videos / BLISS Bridges and App

To see all of the BLISS Automation How to Videos on YouTube, [click here](#)

Open your Camera app and point it steadily for 2-3 seconds towards the QR Code you want to scan



Adding a
BLISS USB-
Bridge



Adding Devices
to the app



Pairing with
Amazon Alexa



Pairing with
Google Home



Scene
Settings



Setting Limits
and Favorites



Timer
Settings

How to Videos / Remote Control and Charging



Adding or
Removing
Remotes



Adjusting
Motor
Speed



Hiding
Unused
Channels



Pair/Unpair
a Remote
Control



Setting
a Favorite
Position



Setting
Upper/Lower
Limits



Toggle Roller/
Sheer
Mode



Using the
Magnetic
Charging Kit



TD/BU Limit
Setting



TD/BU
Setting Favorite
Positions

Automation Programming Guides

To see all of the Automation Programming Guides, [click here](#) or scan the QR code below



Automation Programming
Guide Library



POWERED by

somfy®

AUTOMATION *from Alta*

SOMFY® AUTOMATION

DESIGNED FOR SILENCE

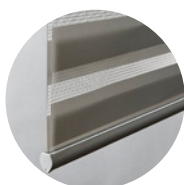


Maximize your smart home experience with our exclusive Zigbee protocol motors. Integrate Somfy Zigbee automated shades for truly connected control and real time shade status and battery feedback! Somfy offers the quietest and most advanced automation systems available, including the new Honeycomb motor option. From the smallest to largest of windows coverings, our Sonesse® line of quiet RTS and Zigbee motors feature convenient power options like rechargeable lithium-ion battery or choose the worry-free maintenance of plug-in or hardwired motors.

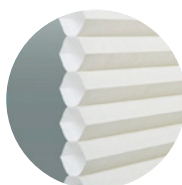
FEATURES:

- **new** Honeycomb Skylight option
- **new** Power Distribution Enclosure Kits provide Distribution Power Panels provide more power options and flexibility to any application
- Zigbee protocol motor offerings offer real-time shade status and battery feedback for maximum convenience
- Set & Go® Connect App for Zigbee motors makes set up and programming quick and easy
- Create a smart, connected space with the TaHoma RTS/Zigbee Bridge to seamlessly integrate with popular third party home automation systems like Control4, Samsung SmartThings or Phillips Hue to control Somfy automated window coverings and even lighting!
- The TaHoma App allows users to operate their Somfy Automated shades remotely or create timers or scenes that are personalized for any lifestyle or need. Add Amazon Alexa or Google integration for seamless voice control.
- Designed for Silence. Enjoy the peace and serenity provided by our full range of Sonesse quiet motors. Each is designed to provide powerfully smooth, quiet operation.
- Enjoy every aspect of motorization with Somfy RTS® and Zigbee accessories and controls designed with whole home customized automation in mind.

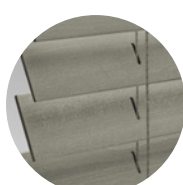
AVAILABLE ON:



Dual Shades



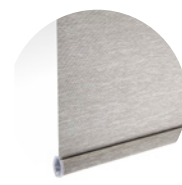
Honeycomb/
Cellular Shades



Faux Wood



Natural Wovens



Roller Shades



Window Shadings



Wood Blinds

SOMFY® AUTOMATION

FREQUENTLY ASKED QUESTIONS

How are Somfy motorized window coverings powered?

There are five main power options for Somfy motorized window coverings:

Reloadable Battery Wand - In this option, the motor is powered by lithium batteries. A 12V battery tube containing 8 AA lithium batteries is mounted either horizontally or vertically inside the window frame behind your motorized window covering. There is no need for an electrician to wire your motorized shades. Dual wands are also available.

WireFree™ Rechargeable Battery Power - In this option, the motor is powered by a rechargeable lithium-ion battery (external pack or built in motor). There's no need for an electrician to wire your motorized shades, which minimizes installation time and cost.

Plug-In Power (DC) - With this power option, the motor plugs directly into a standard outlet. This is a good option for windows located close to an outlet or power source. The benefit of plug-in power is that it allows for maintenance-free operation. No need to worry about changing batteries!

Wired Power (AC) - In this option, the motor is typically hardwired into the home or building's electrical system. This system of power could work for any home but does typically require the use of an electrician. The major benefit, however, is the maintenance-free operation of your motorized product.

Solar Pack Power - The WireFree Solar Pack offers an energy-efficient alternative for powering motorized products by harnessing renewable solar energy to power motorized window coverings. It is easy to install and does not require an electrician.

Can I control Somfy motorized window coverings with an app?

Yes. The TaHoma Bridge can be used for connecting to home automation in many applications as well via Wi-Fi.

What is the battery life of the Somfy WireFree motor systems?

The battery life will vary depending on the size of your window covering and the frequency of use. In general, users can expect approximately one year of operation for their WireFree Somfy motors. This estimate is based on one cycle per day use, with a cycle being the shade moving up once and down once.

What is RTS?

RTS is a radio technology that can communicate with motorized products reliably up to 20 feet and from up to 65 feet in optimal conditions. There is no need to point or aim the remote or control device at the window covering because RTS is omni-directional so the radio waves travel through walls. RTS technology works with a variety of Somfy controls including hand-held remotes, wall switches, the TaHoma app, voice control, and sensors.

What is Zigbee?

The Zigbee alliance was designed for connecting devices in networks over very short distances with very low power consumption. Hundreds of brands are currently members of this alliance. A main benefit of Zigbee is its mesh network topology, which enables bi-directional communication for real-time shade and battery feedback. Both Somfy RTS and Somfy Zigbee can be used in the same location along with a TaHoma RTS/Zigbee Gateway. Somfy RTS remote controls cannot be used to control Somfy Zigbee motors.

What is a channel on a Somfy remote or wall switch?

A channel is either associated with a single motorized window covering or a group of motorized window coverings. Depending on the type of control and technology being used, controls are available in single channel and/or multichannel versions. Channels are used to organize motorized window coverings with their control counterpart(s). This could mean a hand-held remote or a wall switch with multiple channels to control Somfy-powered products in whatever configuration needed.

Can I combine different types of controls to operate my motorized shades and blinds?

Whether you want to use a wall switch, an app, voice control or a hand-held remote, Somfy has a control option for you. You can use any combination of Somfy RTS controls. Mix and match remotes, wall switches, timers and sensors for up to 12 devices or channels per window covering.

What smart home systems can I use to control my motorized shades and blinds?

With Radio Technology Somfy® (RTS) motors, you can integrate with many popular smart home systems like: Savant, Crestron, Control4, Leviton, RTA, AMX, ELAN, URC, Wink, Vantage, Nexia, SmartThings, Amazon Alexa and more

[Check out the TaHoma RTS checklist to confirm compatibility with existing systems](#)

SOMFY® AUTOMATION

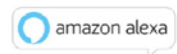
AT A GLANCE AVAILABILITY

MOTOR SYSTEM OPTIONS BY PRODUCT

	MOTOR	QUIET LEVEL	MOTOR STRENGTH	POWER SOURCE	DUAL SHADES	FAUX/ WOOD BLINDS	HONEYCOMB CELLULAR	ROLLER SHADES	WINDOW SHADINGS	NATURAL WOVENS	REAL-TIME SHADE & BATTERY STATUS	APP/HOME AUTOMATION COMPATIBLE*	
RTS MOTORS	12V DC	Cord Lift WireFree™ RTS			Battery wand, Plug-in, External Li-ion Battery							✓	
													bottom-up <i>new</i> Skylights
		Tilt Only 50 WireFree™ RTS			Battery wand, Plug-in, External Li-ion Battery,		✓					✓	
	12V DC Built-in and External Li-ion	Sonesse® 28 WireFree™ RTS Li-ion			Internal Li-ion Battery	✓			✓	✓	✓		✓
		Sonesse® 28 WireFree™ RTS DC			Battery wand, Plug-in Trans, External Battery Pack	✓			✓	✓	✓		✓
		Sonesse® ULTRA 30 WireFree™ RTS Li-ion			Internal Li-ion Battery	<i>new</i>			✓		<i>new</i>		✓
		Sonesse® 40 WireFree™ RTS Li-ion			Internal Li-ion Battery	✓			✓				✓
	24V DC	Sonesse®30 RTS 24V DC			Weidmüller Pwr Cable, Plug-In Transformer, <i>new</i> Power Dist. Kit	<i>new</i>			✓		<i>new</i>		✓
120V AC	Sonesse®50 RTS AC			Hardwired AC Power				✓				✓	
	Sonesse® ULTRA 50 AC			Hardwired AC Power				✓				✓	
ZIGBEE MOTORS	12V DC Built-in and External Li-ion	Sonesse® 28 WireFree™ Zigbee Li-ion			Internal Li-ion Battery	✓			✓	✓		✓	
		Sonesse® 28 WireFree™ Zigbee DC			Battery wand, Plug-in Trans, External Battery Pack	✓			✓	✓			✓
		Sonesse® ULTRA 30 WireFree™ Zigbee Li-ion			Internal Li-ion Battery	<i>new</i>			✓				✓
	120V AC	Sonesse® 40 AC Zigbee			Hardwired AC Power				✓				✓

*Additional Interface is required.

COMPATIBLE THIRD PARTY AUTOMATION SYSTEMS :



+ many more

SOMFY® AUTOMATION

MOTOR OPTIONS

WIREFREE RTS MOTOR OPTIONS:

Tilt Only 50 WireFree™ RTS

Wood/Faux Wood

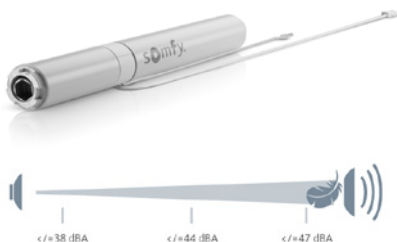


- 1.0 Nm DC tilt motor
 - Great for hard to reach windows and where wiring may be a challenge
 - Sound level < 56 dBA
 - Not available on blinds with Lift & Lock
 - Minimum Width: 20" net (22" net with tapes) / Max Width: 96"*
- Power Supply: Battery Wand, External Rechargeable Battery Pack, Plug-In, WireFree Solar Panel Kit*

[Link to WireFree RTS Motors Quick Start Programming Guide](#)

Cord Lift WireFree™ TL25 RTS

Honeycomb/Cellular Shades

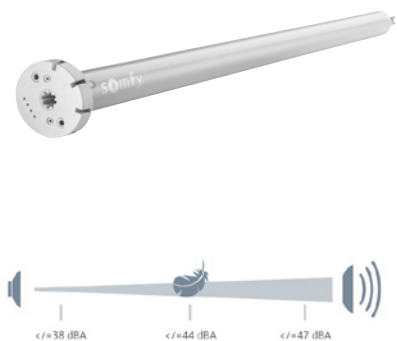


- Available on bottom up honeycomb shades
 - **new** Skylight honeycomb shade option
 - 0.8 Nm motor with external rechargeable Li-ion battery pack
 - Adjustable speed control (15-30 rpm), 30 default
 - Sound level $\leq 50\text{ dBA}$
 - Available as a 2 on 1 Headrail
 - Min Width: 18" Max Width: 120" (not available on 1-1/4" and Dimensions)
- Power Supply: Battery Wand, Rechargeable Battery Pack, 12V DC Power Supply, WireFree Li-ion Solar Panel Kit (if ordered with Rechargeable Battery Pack)*

[Link to WireFree RTS Motors Quick Start Programming Guide](#)

Sonesse® 28 WireFree™ RTS Li-ion

Dual Shades/Natural Woven/Roller Shades/Window Shadings



- 1.1 Nm quiet motor with built-in rechargeable Li-ion battery
 - Accommodates narrower width openings
 - LED low battery indicator provides battery status and feedback
 - Soft Start/Stop provides elegant and precise operation and aesthetic
 - Adjustable speed control (10-28 rpm) default 20
 - Sound level < 44 dBA
 - Designed for small to medium-sized shades
 - Min Width Dual Shades: 24" net / Max Width: varies*
 - Min Width Natural Woven Shades: 27" net / Max Width: varies*
 - Min Width Roller Shades: 24 1/2" net / Max Width: varies*
 - Min Width Window Shadings: 26" net / Max Width: 120"
- Power Supply: Battery Charger or WireFree Li-ion Solar Panel Kit*

[Link to WireFree RTS Motors Quick Start Programming Guide](#)

*The minimum and maximum sizes listed are for the given motor system and may vary depending of the product, fabric and features selected. See individual product Retail Price List for details.

SOMFY® AUTOMATION

MOTOR OPTIONS

WIREFREE RTS MOTOR OPTIONS:

Sonesse® 28 WireFree™ RTS DC

Dual Shades/Natural Woven/Roller Shades/Window Shadings



- 1.1 Nm motor with external rechargeable Li-ion battery
- Accommodates narrower width openings with the external battery pack
- LED low battery indicator provides battery status and feedback
- Soft Start/Stop provides elegant and precise operation and aesthetic
- Adjustable speed control (10-28 rpm) default 20
- Sound level <math>< 44\text{ dBA}</math>
- Designed for small to medium-sized shades
- Min Width Dual Shades: 16" net / Max Width: varies*
- Min Width Natural Woven Shades: 22" net / Max Width: varies*
- Min Width Roller Shades: 16 1/2" net / Max Width: varies*
- Min Width Window Shadings: 19" net / Max Width: 120"

Power Supply: Battery Wand, Rechargeable Battery Pack, External Rechargeable Battery Pack, 12V DC Power Supply, WireFree Solar Kit or WireFree Li-ion Solar Panel Kit (if ordered with Rechargeable Battery Pack)

[Link to WireFree RTS Motors Quick Start Programming Guide](#)

Sonesse® ULTRA 30 WireFree™ RTS Li-ion

Dual Shades/Natural Woven/Roller Shades



- 2 Nm Ultra-quiet motor with built-in rechargeable Li-ion battery
- LED low battery indicator provides battery status and feedback
- Soft Start/Stop provides elegant and precise operation and aesthetic
- Adjustable speed control (10-28 rpm) default 20
- Sound level <math>< 42\text{ dBA}</math>
- Designed for medium-sized shades
- Min Width Natural Woven Shades: 35" / Max Width: varies*
- Min Width Roller Shades: 28 1/2" / Max Width: varies*

Power Supply: Battery Charger or WireFree Li-ion Solar Panel Kit

[Link to Sonesse Ultra 30 WireFree RTS Video](#)

[Link to WireFree RTS Motors Quick Start Programming Guide](#)

Sonesse® 40 WireFree™ RTS Li-ion

Roller Shades



- 3 Nm quiet motor with built-in rechargeable Li-ion battery
- LED low battery indicator provides battery status and feedback
- Soft Start/Stop provides elegant and precise operation and aesthetic
- Adjustable speed control (10-28 rpm) default 20
- Recessed programming button
- Sound level <math>< 44\text{ dBA}</math>
- Designed for medium-large-shades
- Min Width: 31" / Max Width: varies*

Power Supply: Battery Charger or WireFree Li-ion Solar Panel Kit

[Link to WireFree RTS Motors Quick Start Programming Guide](#)

*The minimum and maximum sizes listed are for the given motor system and may vary depending of the product, fabric and features selected. See individual product Retail Price List for details.

SOMFY® AUTOMATION

MOTOR OPTIONS

PLUG IN AND HARDWIRED RTS MOTOR OPTIONS:

Sonesse® 30 RTS 24V DC Dual Shades/Natural Woven/Roller Shades

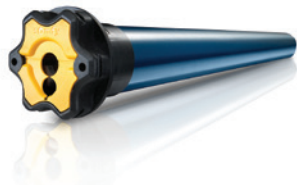


- New and improved quiet DC motorization with Weidmuller power cable which allows easy, safe connection to power supply
- Low voltage wiring that is safe and out of sight
- 2 Nm plug-in quiet operation motor (24V)
- Wiring: 2 wire 24 gauge cable at 9.8" length
- Adjustable speed control (6-28 rpm) at 1 rpm increments default: 25 rpm
- Sound level $\leq 42\text{dBA}$ at 25 rpm
- Soft Start and Stop with gradual acceleration & deceleration
- Utilizes Skyline brackets
- 1 motor per shade, coupled shades are not available
- Min Width: 21" / Max Width: 144"*

Power Supply: Plug-in (24 V DC transformer) / Hardwired / DC Power Distribution Enclosure Kit

[Link to Sonesse 30 RTS Motors Quick Start Programming Guide](#)

Sonesse® 50 RTS AC Roller Shades

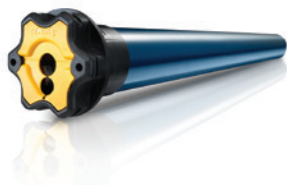


- 6 Nm quiet operation motor (120V)
- Wiring: 3 wire 14-16 gauge, 1.2 Amps at peak load
- Motor lifts up to 52 pounds and comes on a 2", 2 1/2", 3", 3 1/4" tube
- $\leq 44\text{ dBA}$ of running noise at 32 rpm
- Designed for larger shades
- Up to 3 shades can be coupled side-by-side to operate with one motor
- 10' cord is standard (3 wire pigtail)
- 1.5', 6', 10' and 24' plug in cables are available (surcharges apply)
- Min Width: 33" / Max Width: 168"* / Max Length: 168"*

Power Supply: Hardwired

[Link to Sonesse 50 RTS Motors Quick Start Programming Guide](#)

Sonesse® ULTRA 50 RTS AC Roller Shades



- 6 Nm ultra quiet operation motor (120V)
- Wiring: 3 wire 14-16 gauge .95 Amps at peak load
- Motor lifts up to 52 pounds and comes on a 2", 2 1/2", 3 1/4" tube
- $\leq 38\text{ dBA}$ of running noise at 24 rpm
- Designed for larger shades
- 10' cord is standard (3 wire pigtail)
- 1.5', 6', 10', 24' plug in cables are available (surcharges apply)
- Up to 3 shades can be coupled side-by-side to operate with one motor
- Min Width: 39" / Max Width: 168"* / Max Length: 168"*

Power Supply: Hardwired

[Link to Sonesse 50 RTS Motors Quick Start Programming Guide](#)

[Link to Sonesse Ultra 50 Quiet Motor Video](#)

*The minimum and maximum sizes listed are for the given motor system and may vary depending of the product, fabric and features selected. See individual product Retail Price List for details.

SOMFY® AUTOMATION

ZIGBEE MOTOR OPTIONS

ZIGBEE MOTOR OPTIONS:

Sonesse® 28 WireFree™ Zigbee Li-ion Dual Shades/Natural Woven/Roller Shades/Window Shadings



- 1.1 Nm quiet Zigbee motor with built-in rechargeable Li-ion battery
 - Native compatibility with Zigbee controllers (including Samsung Smartthings)
 - Real time shade and battery status and precision control
 - Installation and programming done directly from the Set & Go® Connect App
 - Accommodates narrower width openings
 - LED low battery indicator provides battery status and feedback
 - Soft Start/Stop provides elegant and precise operation and aesthetic
 - Adjustable speed control (10-28 rpm), 20 default
 - Sound level ≤ 44 dBA
 - Designed for small to medium-sized shades
 - Min Width Dual Shades: 24" net / Max Width: varies*
 - Min Width Natural Woven Shades: 27" net / Max Width: varies*
 - Min Width Roller Shades: 24 1/2" net / Max Width: varies*
 - Min Width Window Shadings: 26" net / Max Width: 120"
- Power Supply: Battery Charger or WireFree Li-ion Solar Panel Kit

[Link to TaHoma Zigbee Checklist](#)

[Link to TaHoma Zigbee/RTS Programming Guide](#)

Sonesse® 28 WireFree™ Zigbee DC Dual Shades/Natural Woven/Roller Shades/Window Shadings



- 1.1 Nm Zigbee motor with external rechargeable Li-ion battery
 - Native compatibility with Zigbee controllers (including Samsung Smartthings)
 - Real time shade and battery status and precision control
 - Installation and programming done directly from the Set & Go® Connect App
 - Accommodates narrower width openings when used with the external battery pack
 - LED low battery indicator provides battery status and feedback
 - Soft Start/Stop provides elegant and precise operation and aesthetic
 - Adjustable speed control (10-28 rpm), 20 default
 - Sound level ≤ 44 dBA
 - Designed for small to medium-sized shades
 - Min Width Dual Shades: 16" net / Max Width: varies*
 - Min Width Natural Woven Shades: 22" net / Max Width: varies*
 - Min Width Roller Shades: 16 1/2" net / Max Width: varies*
 - Min Width Window Shadings: 19" net / Max Width: 120"
- Power Supply: Battery Wand, Rechargeable Battery Pack, 12V DC Power Supply, WireFree Li-ion Solar Panel Kit (if ordered with Rechargeable Battery Pack)

[Link to TaHoma Zigbee Checklist](#)

[Link to TaHoma Zigbee/RTS Programming Guide](#)

*The minimum and maximum sizes listed are for the given motor system and may vary depending of the product, fabric and features selected. See individual product Retail Price List for details.

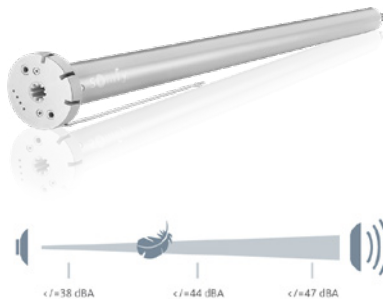
SOMFY® AUTOMATION

ZIGBEE MOTOR OPTIONS

ZIGBEE MOTOR OPTIONS (continued):

Sonesse® ULTRA 30 WireFree™ Zigbee Li-ion

Dual Shades/Natural Woven/Roller Shades



- 2 Nm Ultra-quiet Zigbee motor with built-in rechargeable Li-ion battery
- Native compatibility with Zigbee controllers (including Samsung Smartthings)
- Real time shade and battery status and precision control
- Installation and programming done directly from the Set & Go® Connect App
- LED low battery indicator provides battery status
- Soft Start/Stop provides elegant and precise operation and aesthetic
- Adjustable speed control (10-28 rpm), 20 default
- Sound level ≤ 42 dBA
- Designed for medium-sized shades
- Min Width Natural Woven Shades: 35" / Max Width: varies*
- Min Width Roller Shades: 28 1/2" / Max Width: varies*

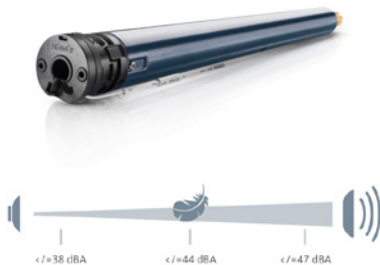
Power Supply: Battery Charger or WireFree Li-ion Solar Panel Kit

[Link to TaHoma Zigbee Checklist](#)

[Link to TaHoma Zigbee/RTS Programming Guide](#)

Sonesse® 40 AC Zigbee

Roller Shades



- 4 Nm Zigbee quiet operation motor (120V)
- Native compatibility with Zigbee controllers (including Samsung Smartthings)
- Real time shade and battery status and precision control
- Installation and programming done directly from the Set & Go® Connect App
- Real time shade position and feedback
- Integrated button on the motor head
- Soft Start/Stop provides elegant and precise operation and aesthetic
- Includes 138" cable with pigtailed
- Electrician is required
- Sound level ≤ 42 dBA at 36 rpm
- Designed for medium-large-shades
- Min Width: 27" / Max Width: varies*

Power Supply: Hardwired

[Link to TaHoma Zigbee Checklist](#)

[Link to TaHoma Zigbee/RTS Programming Guide](#)

*The minimum and maximum sizes listed are for the given motor system and may vary depending of the product, fabric and features selected. See individual product Retail Price List for details.

SOMFY® AUTOMATION

POWER OPTIONS

POWER OPTIONS:

Rechargeable External Battery Pack



- External Li-ion battery used to power wirefree external motors
- 500 Uses per charge
- Discreet design allows for placement in smaller window openings
- Charges with 12V plug-in charger (9 foot cord)
- Extension cables are available (10", 48" and 96")
- Dimensions: 9.8" L x 1" W x .9" D, cable length: 6"

[Link to Rechargeable Battery Pack Quick Guide](#)

WireFree™ Li-ion Charger



- Conveniently charge WireFree lithium-ion motors and external rechargeable battery packs
- Required on WireFree motor systems, at least 1 per order (unless transformer is selected for Tilt Only WireFree 50)
- Includes 81" long cord
- 8" and 94.5" long extension cables are available

Reloadable Battery Tubes



- Single or Dual Empty Battery Tube
- Available on Honeycomb, Roller Shades, Natural Woven Shades, Dual Shades, Window Shadings, Wood Blinds, and Fauxwood Blinds
- Each tube requires 8 AA Lithium batteries (not included)
- If the battery tube exceeds the width of the opening, it will need to be mounted on the side of the wall
- Battery Tube Dimensions: 20.625" L

SOMFY® AUTOMATION

POWER OPTIONS

POWER OPTIONS (continued):

Plug-in Transformer



- 12V or 24V DC plug-in power cord
- Plugs directly into a standard electrical outlet, includes 5' cord
- Maintenance free, no need to change batteries
- May require an electrician to add an outlet
- 12V is optional power supply for Tilt Only 50 WireFree
- 24V is the standard power supply for Sonesse 30 RTS 24V motor

24V DC Power Distribution Panel – 10 Motor



- Available on Sonesse 30 24V DC motor only
- Includes one 10 motor distribution panel and one 24V DC 20 Amp Power Supply
- Power up to 10 DC motors from a central location
- Panel and power cord will ship in separate boxes
- Dimensions: 12.125" W x 12.125" H x 6.25" D

[Link to Power Distribution Panel Guide](#)

24V DC Power Distribution Panel – 20 Motor



- Available on Sonesse 30 24V DC motor only
- Includes two 10 Motor Distribution Panel
- Includes two 24V DC 20 Amp Power Supply
- Power up to 20 DC motors from a central location
- Panel and power cord will ship in separate boxes
- Dimensions: 18.125" W x 15.125" H x 6.25" D

[Link to Power Distribution Panel Guide](#)

SOMFY® AUTOMATION

POWER OPTIONS

POWER OPTIONS (continued):

Sonesse® WireFree™ Li-ion Solar Kit



- Harness solar energy to charge WireFree window coverings
- Compatible with Sonesse WireFree Li-ion RTS Motors and Rechargeable External Battery Pack
- Includes Solar Panel, mounting kit with screws, and optional glass mount adhesives
- Panel Dimensions: 11.8" L x 1.6" W

HOME AUTOMATION INTERFACE ACCESSORIES:

16 Channel Universal RTS Interface



- Allows user to convert infrared, RS232 and RS485 protocol to RTS to allow for third party control
- Offers 16 channels
- Range of 65 feet
- Powered by 9V-15V DC wall plug

RTS Repeater



- Plugs into any 120V AC outlet
- Extends range up to 60 feet
- Should be placed halfway between control device and motor
- Receives the signal from the remote and re-transmits it to the shade
- Useful in exceptionally large areas or rooms
- Maximum of 2 per network

SOMFY® AUTOMATION

CONTROL OPTIONS

RTS CONTROL OPTIONS:

Situo® 1 and 5



- Single and 5 channel RTS hand held remote
- Classic ergonomic design that can control a variety of Somfy motorized systems
- Control one motorized product, or a group of motorized products per channel
- Set a favorite position for quick access for individual or a group control
- Optional wall mounting clip included
- Powered by 3V lithium battery CR 2430

[Link to Situo 5 Users Guide](#)

Telis 16



- 16 Channel RTS hand held remote with on-screen display
- Close and open groups of windows with a single gesture
- Clear and functional design with an on-screen display
- Label each channel for added convenience
- Wall mounting clips is included
- Powered by 2 AAA alkaline batteries

Situo® 5 Variation



- 5 Channel RTS hand held remote with scroll wheel
- Unique design allows precise tilt control of blinds and shades
- Set a favorite position for an individual or a group of motorized applications for quick and easy access.
- Not available on Woven or Roller
- Powered by 3V lithium battery CR 2430

Telis 1 Chronis RTS Remote with Timer



- Combines the function of a remote with the convenience of a programmable timer
- Quick set feature
- One open and one closed schedule per day
- Weekday and weekend schedules
- Wall mount clip is included
- Powered by 2 AAA alkaline batteries

Decoflex WireFree Wall Switch



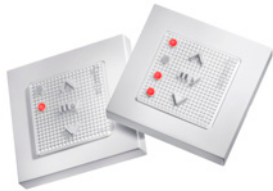
- Single or 5 channel wireless RTS cut-in wall switches
- Completely wireless and installs quickly
- Control one motorized product, or a group of motorized products per channel.
- Powered by 3V lithium battery CR2450

SOMFY® AUTOMATION

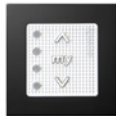
CONTROL OPTIONS

RTS CONTROL OPTIONS (continued):

Smooove® 1 and 4 Channel Surface Mounted RTS Wall Switch



Silver



Black

- 1 or 4 channel, surfaced mounted RTS wall switch
- No need to cut in to wall, completely wireless design
- Lightly touch the Smooove surface to adjust position
- Easy access to programming button
- Set a favorite position for quick access for individual or a group control
- Simple design complements any decor
- Includes Pure frame
- Additional frame options include: Silver or Black (sold separately)

[Link to Smooove Overview Video](#)

SOMFY® AUTOMATION

CONTROL OPTIONS

TAHOMA APP CONTROL:

TaHoma® RTS/Zigbee Bridge and App



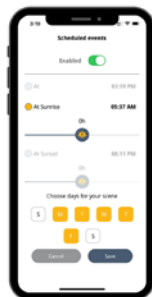
Ethernet Adapter

- Control for up to 40 RTS/Zigbee channels per TaHoma from iOS and Android devices
- Create a fast, stable direct wired connection to your internet network using the optional Ethernet adapter
- Join up to 10 TaHoma interfaces together (RTS only) for multi-zone control
- Maximum 40 scenes / Maximum 40 schedules
- Automate connected devices with scenes and schedules
- Remotely control both Zigbee and RTS products with the TaHoma App
- Installers can easily set and program Zigbee products with the Set & Go® Connect App
- Supports UP/DOWN/MY/STOP commands for motorized shades/blinds
- Supports incremental control for Tilt motors and lighting
- Supports ON/OFF commands for control of lighting or other devices powered via the Zigbee Smart Plug
- Compatible device systems: Amazon Alexa, IFTTT, Phillips Hue, and Google Assistant
- Also supports multiple users and remote access
- Control4® Certified
- Integration with third-party systems over IP
- To ensure performance as designed refer to the specific TaHoma checklist below



TAHOMA APP

Installer - Use to program RTS Products
End user - Use to control RTS & Zigbee Products



[Click icon to download](#)



[Click icon to download](#)

[Link to the TaHoma RTS Checklist](#)

[Link to TaHoma App RTS Programming Guide](#)

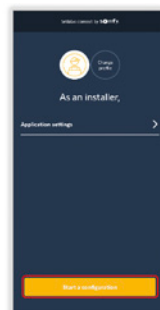
[Link to TaHoma Playlist on YouTube](#)

[Link to the TaHoma Integration Guides for RTS](#)



SET & GO APP FOR INSTALLERS

Installer - Use to Program Zigbee Products



[Click icon to download](#)



[Click icon to download](#)

[Link to the TaHoma Zigbee Checklist](#)

[Link to the TaHoma Zigbee Set @ Go App Installers Guide](#)

[Link to the TaHoma Set @ Go App Playlist on YouTube](#)

[Link to the TaHoma Integration Guides for Zigbee](#)

SOMFY® AUTOMATION

ZIGBEE CONTROL OPTIONS

ZIGBEE CONTROL OPTIONS:

Situo® 1 Zigbee



- Single channel Zigbee hand held remote
- Classic ergonomic design that can control Zigbee motor systems
- Control for Zigbee Smart Plug
- Must be used with the TaHoma® RTS/Zigbee Bridge
- Control one motorized product, or a group of motorized Zigbee products per channel
- Set a favorite position for quick access for individual or a group control
- Optional wall mounting clip included
- Powered by 3V lithium battery CR 2430

[Link to Zigbee Situo 1 Guide](#)

Situo 4 Zigbee



- Four channel Zigbee hand held remote
- Classic ergonomic design that can control Zigbee motor systems
- Control for Zigbee Smart Plug
- Must be used with the TaHoma® RTS/Zigbee Bridge
- Control one motorized product, or a group of motorized Zigbee products per channel
- Set a favorite position for quick access for individual or a group control
- Optional wall mounting clip included
- Powered by 3V lithium battery CR 2430

[Link to Zigbee Situo 4 Guide](#)

ZIGBEE ACCESSORY OPTIONS:

Zigbee Smart Plug and Repeater



- Can be used in Zigbee installations along with the TaHoma Bridge to extend the Zigbee radio range.
- Create scenes and schedules to automate motorized shades
- Used to build a robust mesh network
- Fits into any standard wall socket
- One repeater is recommended for every 6 WireFree motors
- Frequency: 2.4 Ghz
- Power Supply: 110-127V AC, 60 Hz, 15 A max
- Requires TaHoma Bridge and App
- Dimensions: 1.87" w x 1.87" h x 1.24" d

[Link to Zigbee Smart Plug Guide](#)

AUTOMATION *from Alta*

SOMFY® AUTOMATION

PRICING & SURCHARGES

The Automation cost factor is different from blinds/shades. If you need to access your cost factor, refer to page 4 in the General Information Guide.

RTS MOTOR SYSTEMS

	PRICING
Cord Lift WireFree TL25 RTS (1035513)	\$260
Tilt Only 50 WireFree RTS Motor (1021803)	\$260
Sonesse 28 WireFree RTS DC Motor (1026826)	\$260
Sonesse 28 WireFree RTS Li-ion Motor (1026825)	\$360
Sonesse ULTRA 30 WireFree RTS Li-ion Motor (1003310SMFY)	\$420
Sonesse 30 RTS 24V DC Motor (1026828)	\$510
Sonesse 40 WireFree RTS Li-ion Motor (1015359)	\$560
Sonesse 50 RTS 120V AC Motor (1001809)	\$600
Sonesse ULTRA 50 120V AC Quiet Motor (1002562)	\$800

ZIGBEE MOTOR SYSTEMS

	PRICING
Sonesse 28 WireFree Zigbee DC Motor (1035012)	\$320
Sonesse 28 WireFree Zigbee Li-ion Motor (1035013)	\$420
Sonesse ULTRA 30 WireFree Zigbee Motor (1035014)	\$480
Sonesse 40 Zigbee AC Motor (1035015)	\$620

CONTROL OPTIONS

	PRICING
Situo 1 RTS Remote in Pure - 1 Channel (1019536)	\$60
Situo 5 RTS Remote in Pure - 5 Channel (1019537)	\$84
Telis 16 RTS Remote - 16 Channel (1811081)	\$300
Situo 5 Variation RTS Remote in Pure - 5 Channel with Scroll Wheel (1021802)	\$140
Decoflex WireFree RTS Wall Switch - 1 Channel, White (1810897)	\$100
Decoflex WireFree RTS Wall Switch - 5 Channel, White (1810813)	\$100
Telis 1 Chronis RTS Remote with Timer (1805237A)	\$330
Smooove 1 RTS Surface Mounted Wall Switch - 1 Channel (Includes Pure frame) (1811533)	\$120
Smooove 4 RTS Surface Mounted Wall Switch - 4 Channel (Includes Pure frame) (1019538)	\$120
Smooove Frame - Silver (9015025) or Black (9015023)	\$24
Situo 1 Zigbee Remote - 1 Channel (1035016)	\$100
Situo 4 Zigbee Remote - 4 Channel (1035017)	\$140

POWER ACCESSORIES

	PRICING
24V DC Power Distribution Enclosure Kit - 10 motor new	\$1200
24V DC Power Distribution Enclosure Kit - 20 motor new	\$3000
Rechargeable Li-ion Battery Pack (1019535)	\$100
WireFree Lithium-ion Charger (9025166)	\$30
WireFree Charger Extension Cable 8" (9021131), 95" (9021016)	\$12
WireFree Li-ion Solar Panel Kit (1026827)	\$160
Battery Pack Extension Cable - 10" (9018623), 48" (9016736)	\$12
Battery Pack Extension Cable - 96" (9018624)	\$18
Plug-in Transformer - 12V DC, 10 Ft Cord (1822445)	\$140
Plug-in Transformer - 24V DC (RC445117)	\$100
Power Cable - 120V with 18" Plug (1019539)	\$30
Power Cable - 120V with: 72" Plug (1019542) 120" Plug (1019543)	\$40
Power Cable - 120V with 288" Plug (1019541)	\$80
Power Cable - 120V with out Plug, 120" (9018190)	\$54
Reloadable Battery Wand, empty (RC445268) requires 8 AA Lithium Batteries	\$36
Dual Reloadable Battery Wand, empty w/connecting cable (KITRDWR), each requires 8 AA Lithium Batteries	\$86

INTEGRATION & MISCELLANEOUS ACCESSORIES

	PRICING
RTS Repeater (1810791)	\$300
16 Channel Universal RTS Interface (1810872)	\$660
TaHoma RTS/Zigbee Bridge (1031856)	\$300
TaHoma Ethernet Adapter (1031853)	\$40
Zigbee Smart Plug and Repeater (1035018)	\$100

HARDWIRED AUTOMATED COUPLED SHADES

	SURCHARGE
2 Panels	Add \$90
3 Panels	Add \$180

The above pricing represents the motorization surcharge that needs to be added to the price of a single blind. Refer to the individual product reference guides for additional pricing and surcharge information.

SOMFY® AUTOMATION

QR CODE QUICK LINKS

CHECK OUT THESE TAHOMA APP HOW TO AND PROGRAMMING VIDEOS

How to Videos / TaHoma Bridge and App

To see all of the Somfy Automation TaHoma How to Videos on YouTube, [click here](#) or scan the QR codes below.

Open your Camera app and point it steadily for 2-3 seconds towards the QR Code you want to scan



Somfy TaHoma Channel on YouTube



TaHoma® App Overview



TaHoma® LED Behavior



TaHoma® How to Create an Account



TaHoma® Initial Setup Using Wi-Fi



TaHoma® How to Add an RTS Product



TaHoma® How to Create, Edit and Delete a Room



TaHoma® How to Create, Schedule, Edit and Delete a Scene



TaHoma® How to Enable Amazon Alexa Skill



TaHoma® How to Enable Google Home



TaHoma® How to Connect to Phillips Hue



TaHoma® How to Connect Brilliant



TaHoma® How to Connect to Samsung SmartThings



TaHoma® How to Connect with IFTTT

TaHoma® Zigbee Videos and Guides

To see additional Zigbee How to Videos, [click here](#) or scan the QR code below



TaHoma Zigbee Set & Go App Playlist on YouTube



TaHoma Zigbee Guides and Manuals

Additional QR Codes to Videos and Guides

To see additional Somfy RTS How to videos, [click here](#) or scan the QR code below

To see all of the Automation Programming Guides, [click here](#) or scan the QR code below



Somfy How to Video Series on YouTube



Automation Programming Guide Library



POWERWAND

AUTOMATION

AUTOMATION *from Alta*

POWERWAND™

EASY ACCESS LIGHT CONTROL

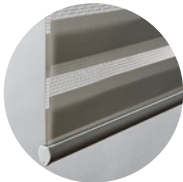


Our wirefree, rechargeable PowerWand motor offers affordable motorization to anyone needing the cord free ease and functionality of automated shades.

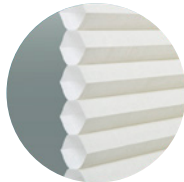
FEATURES:

- **new** Two-on-One Headrail option available on Honeycomb shades.
- Keep it simple with minimal programming for worry free operation
- Enjoy simple touch and walk away push button control, even set a favorites position
- The rechargeable lithium-ion battery powered wand conveniently eliminates the need for batteries
- Keep pets and children safe with cord free and sleek wand, available in 5 colors

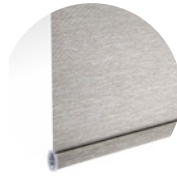
AVAILABLE ON:



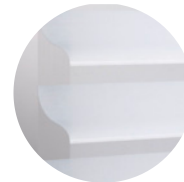
Dual Shades



Honeycomb Shades



Roller Shades



Window Shadings

OPTIONS:

- Wand colors: White, Vanilla, Gray, Bronze, Black (specify upon ordering)
- Wand lengths: 1 ft (12"), 2 ft (24"), 3 ft (36"), 4 ft (48"), 5 ft (60")
- Can be ordered for right or left side placement
- One plug-in charger is required for each order (specify upon ordering)
- PowerWand is not available on the 1-1/4" cell size Honeycomb fabrics



POWERWAND RETAIL SURCHARGE:

The Automation cost factor is different from blinds/shades. If you need to access your cost factor, refer to page 4 in the General Information Guide.

- PowerWand \$100
- Plug-in Charger Kit (1027720) \$30
- Honeycomb 2-on-1 Option Price as 2 separate shades



The above pricing represents the motorization surcharge that needs to be added to the price of a single blind. Refer to the individual product reference guides for additional pricing and surcharge information.

POWERWAND™

FREQUENTLY ASKED QUESTIONS

How do PowerWand shades operate?

Press the up or down button on the pendant to raise or lower the shading to your desired position. No programming is required with PowerWand™ as upper and lower limits are set at the factory. If desired, upper and lower limits can be adjusted in the field.

Please refer to the installation instructions for instructions on resetting the upper and lower limits and setting a favorites position can be programmed on-site.

What does the PowerWand look like?

The PowerWand Rechargeable wand and pendant will arrive attached to the shade on Honeycomb Shades. Dual, Roller, Window Shadings will require simple hook on attachment. The wand and pendant hangs down the front of the shades from the head rail.

Are Additional PowerWand Options Available?

Wand is available in White, Vanilla, Gray, Bronze, Black (there is no default)

Wand is available in 12" increments up to 60" (1 ft. – 5 ft.)

Wand is available on either the right or left side of the shade

How long will the charge on the battery last?

The battery life will vary based on the type of window covering selected, the size and weight of the window covering and the number of times you operate the blind on a daily basis.

Can I use my cell phone charger to charge the motor?

Yes, the motor/battery will accept any Micro-USB charger. Make sure to use a 5V charger in order to charge BLISS motors properly.

What are the minimums and maximum sizes allowed?

- Min Width Dual Shades: 19.5" net / Max Width: varies by fabric
- Min Width Honeycomb: 21" net / Max Width: 96"
- Min width Honeycomb 2-on 1: 24-1/4" / Max Per Panel Width: 120"
- Min Width Roller Shades: 21" net / Max Width: varies by fabric
- Min Width Window Shadings: 22" net / Max Width: varies by fabric

POWERWAND™

QR CODE QUICK LINKS

CHECK OUT OUR POWERWAND HOW TO VIDEOS

How to Videos

To see all of the PowerWand Automation Programming How to Videos on YouTube, click [here](#)

Open your Camera app and point it steadily for 2-3 seconds towards the QR Code you want to scan



Attaching the
Wand
Roller Shades



Attaching the
Wand
Honeycomb



Recharging
the
PowerWand



Reattaching a
Roller Shade
Pendant



Reversing
Polarity



Resetting the
Motor and
Limits



Additional
PowerWand
Videos on YouTube

LIMITED LIFETIME PRODUCT WARRANTY

This Limited Lifetime Product Warranty extends to the original retail purchaser of Custom Brands Group window covering products which were properly installed and maintained as per our installation instructions and not modified in any way. We will repair or replace, at our option, a defective product after it is returned to Custom Brands Group or one of our dealers.

Natural materials, especially wood, can have a tendency to warp when exposed to the elements. This is considered normal wear and tear and is not covered by this warranty.

Repairs and replacements will be made with like or similar parts or products. We will do our best to match the repair or replacement with similar parts or products, but colors may vary and we cannot guarantee an exact match from previous purchases or to other non-defective existing products, even if they are in or near the same opening. If the product, part/component, or operating system has been discontinued, we will repair or replace only the defective product with the most similar alternative available at the time of repair or replacement.

WHAT IS COVERED

- This warranty covers our products for defects in materials, mechanisms, workmanship, and failure to operate for as long as the original retail purchaser owns the product (unless shorter periods are provided in the chart below)
- All internal mechanisms, components, and brackets
- Fabric delamination
- Custom Brands Group will provide a return shipping label for goods less than 12 months old.

Product/ Component	Period of Coverage (from date of purchase)
All operational cords, ladders and tapes	7 Years
Motorization components and accessories* (batteries not included)	5 Years
Exterior Roller Shades	5 Years
Specialty Shades	1 year
Shutters	25 Years

*All motorized parts must be purchased from Custom Brands Group to be covered by our warranty.

WHAT IS NOT COVERED

- Any conditions caused by normal wear and tear on the product.
- Abuse, accidents, misuse, or alterations to the product.
- Exposure to the elements (sunlight, salt air, wind, water/moisture, high humidity, or corrosive materials) which may cause discoloration, fading, cracking, shrinking, stretching, or warping over time.
- Failure to follow our instructions with respect to measurement, proper installation, cleaning, operation of the product, or maintenance.
- Labor costs associated with removal and re-installation.
- Shipments will be at the purchaser's expense for all goods more than 12 months old.

To Obtain Warranty Service:

- Contact your original dealer (place of purchase) for warranty assistance.
- If you are not the original owner, and therefore not covered by this warranty, contact your local dealer for assistance. There will be costs associated with the repair or replacement.
- Contact Custom Brands Group at 800-669-6333 for technical support, availability of parts, for assistance in obtaining warranty service, or for further explanation of our warranty.

NOTE: In no event, shall Custom Brands Group or its dealers or distributors be liable or responsible for incidental or consequential damages or for any other indirect damage, loss, cost, or expense. Some states do not allow the exclusion or limitation of incidental or consequential damages, so this exclusion or limitation may not apply to you. This warranty gives you specific legal rights, and you may also have other rights which vary from State to State. This warranty is limited to blinds, shades, and shutters installed in residential dwellings.

Different warranty periods and terms apply for commercial products and applications.

Custom Brands Group 111 N Apollo Road Salt Lake City, UT 84116