



STYLE  
4901 / 4903

---

WEAVING  
EXCELLENCE  
WITH  
INNOVATION



		SOLAR OPTICAL PROPERTIES				SHGC/G VALUE g-tot (glass & blind)	
Code	Color	TS	RS	AS	TV	SINGLE 1/4 CL	INSULATING 1 HA
<b>STYLE 4901 - 1%</b>							
P06	Chalk	9	83	8	7	0.18	0.17
P25	Chalk/Black - face	1	22	77	1	0.50	0.32
P25	Chalk/Black - back	1	54	45	1	0.33	0.24
P26	Chalk/Wheat - face	6	65	29	6	0.28	0.22
P26	Chalk/Wheat - back	6	75	19	6	0.22	0.19
Q07	Kettal Grey - face	3	48	49	3	0.37	0.26
Q07	Kettal Grey - back	3	37	60	3	0.43	0.29
Q16	Tobacco - face	2	8	90	2	0.58	0.36
Q16	Tobacco - back	2	6	92	2	0.59	0.37
Q22	Flaxen - face	3	42	55	3	0.40	0.27
Q22	Flaxen - back	3	57	40	3	0.31	0.23
Q23	Whitesands - face	7	65	28	6	0.28	0.22
Q23	Whitesands - back	7	67	26	6	0.27	0.21
Q25	Birch - face	5	57	38	4	0.32	0.23
Q25	Birch - back	5	64	31	4	0.28	0.22
Q26	Cobblestone - face	3	36	61	4	0.43	0.29
Q26	Cobblestone - back	3	55	42	4	0.33	0.24
Q27	Soft Grey	5	58	37	4	0.31	0.23
V03	Pewter/Chalk - face	3	56	41	4	0.32	0.23
V03	Pewter/Chalk - back	3	30	67	4	0.46	0.30
V10	Ebony	1	5	94	1	0.59	0.36
V28	Slate - face	2	11	87	3	0.57	0.36
V28	Slate - back	2	8	90	3	0.58	0.36
<b>STYLE 4903 - 3%</b>							
P06	Chalk	11	81	8	10	0.19	0.17
P25	Chalk/Black - face	3	25	72	3	0.49	0.32
P25	Chalk/Black - back	3	56	41	3	0.32	0.23
P26	Chalk/Wheat - face	9	65	26	9	0.28	0.22
P26	Chalk/Wheat - back	9	73	18	9	0.23	0.19
Q07	Kettal Grey - face	4	47	49	5	0.37	0.26
Q07	Kettal Grey - back	4	37	59	5	0.43	0.29
Q16	Tobacco - face	3	8	89	4	0.58	0.37
Q16	Tobacco - back	3	6	91	4	0.59	0.37
Q22	Flaxen - face	6	43	51	7	0.40	0.27
Q22	Flaxen - back	6	57	37	7	0.32	0.23
Q23	Whitesands - face	9	63	28	8	0.30	0.23
Q23	Whitesands - back	9	67	24	8	0.27	0.21
Q25	Birch - face	7	56	37	7	0.25	0.24
Q25	Birch - back	7	63	30	7	0.29	0.22
Q26	Cobblestone - face	4	38	58	4	0.43	0.29
Q26	Cobblestone - back	4	56	40	4	0.32	0.23
Q27	Soft Grey	8	57	35	8	0.32	0.23
V03	Pewter/Chalk - face	4	53	43	5	0.34	0.24
V03	Pewter/Chalk - back	4	29	67	5	0.47	0.30
V10	Ebony	3	5	92	5	0.60	0.37
V28	Slate - face	3	12	85	4	0.55	0.35
V28	Slate - back	3	8	89	4	0.58	0.37

PROTECTION THAT LIVES ON  
**MICROBAN®**

Microban® antimicrobial protection inhibits the growth of stain-causing bacteria, mold and mildew on the shade.



MIF Seal of Approval



TS = Solar Transmittance  
RS = Solar Reflectance  
AS = Solar Absorptance  
TV = Visual Transmittance

SHGC = Solar Heat Gain Coefficient

1/4 CL = 1/4" Clear Glass  
1 HA = 1" Heat Absorbing Glass

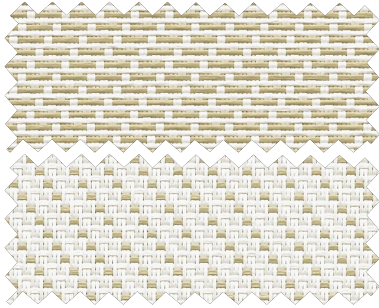
Fabrics Installed Internally  
Zero-Degree Profile Angle

For additional performance values,  
test references and technical  
definitions visit us at [phifer.com](http://phifer.com).

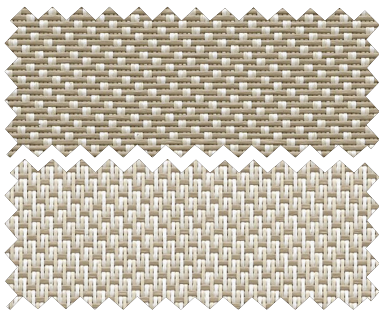
P06 **Chalk**



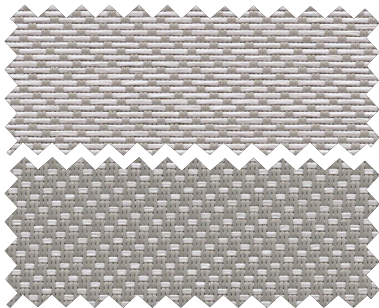
P26 **Chalk / Wheat** - face  
**Chalk / Wheat** - back



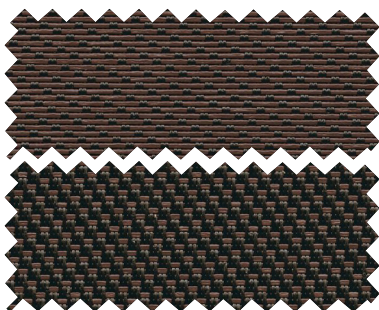
Q22 **Flaxen** - face  
**Flaxen** - back



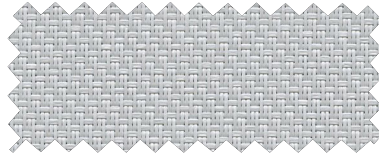
Q07 **Kettal Grey** - face  
**Kettal Grey** - back



Q16 **Tobacco** - face  
**Tobacco** - back



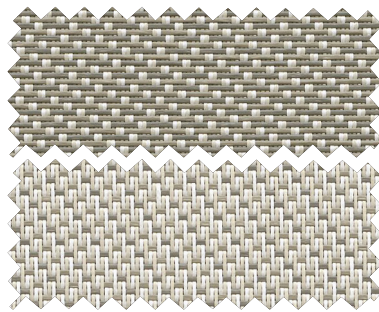
Q27 **Soft Grey**



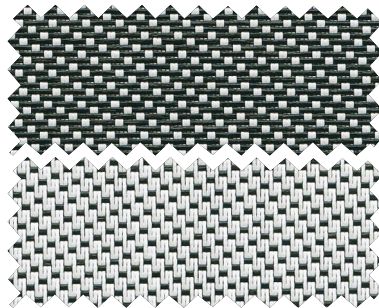
Q23 **Whitesands** - face  
**Whitesands** - back



Q26 **Cobblestone** - face  
**Cobblestone** - back



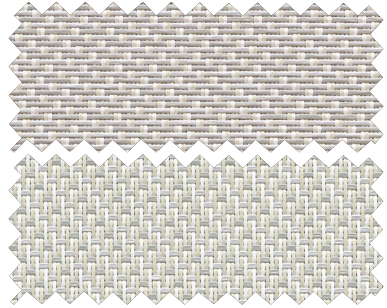
P25 **Chalk / Black** - face  
**Chalk / Black** - back



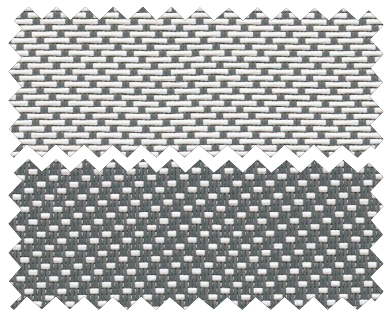
V10 **Ebony**



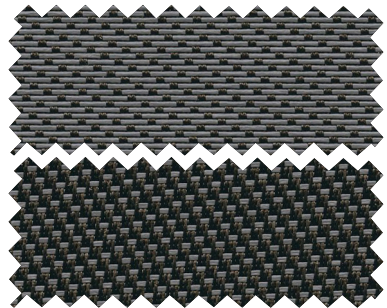
Q25 **Birch** - face  
**Birch** - back



V03 **Pewter / Chalk** - face  
**Pewter / Chalk** - back



V28 **Slate** - face  
**Slate** - back



The unique twill weave of Styles 4901 and 4903 creates two fabrics in one, as distinct yet complimentary colors are exposed on the face and back. Test data for solar heat gain and glare are shown for each side to demonstrate the fabrics performance based on orientation.

# STYLE 4901 / 4903 SPECIFICATIONS

Form follows function in this unique combination of color and weave. Using thin and light weight vinyl coated polyester yarns, Styles 4901 and 4903 are as versatile as they are beautiful. Styles 4901 and 4903 can also be used in exterior shading systems.

<b>FIRE CLASSIFICATION</b>	California U.S. Title 19 (small scale) NFPA 701 TM#1 (small scale) NFPA 701 TM#2 (large scale) NFPA 101 (Class A Rating)	BS 5867 Part 2 Type B Performance CAN/ULC-S 109 (large and small scale) IBC Section 803.1.1 (Class A Rating) CAN/CGSB2-4.162-M80
<i>Fire classifications are subject to change. Please go to <a href="http://phifer.com">phifer.com</a> for the most current information.</i>		
<b>BACTERIA AND FUNGAL RESISTANCE</b>	ASTM E 2180      ASTM G21      AATCC30 Part 3      ASTM D 3273      ASTM G22 GREENGUARD Mold and Bacteria Standard ASTM 6329 Includes Microban antimicrobial additives	
<b>ENVIRONMENTAL CERTIFICATION</b>	GREENGUARD      GREENGUARD Gold Certified to these standards for low chemical emissions into indoor air during product usage	
<b>SAFE USE</b>	RoHS/Directive 2002/95/EC ANSI/WCMA A 100.1-2007 for lead content	REACH (EC 1907/2006) compliant US Consumer Product Safety Commission Section 101
<b>WARRANTY</b>	10-year interior      5-year exterior	
<b>ACOUSTICAL PERFORMANCE</b>	NRC (Noise Reduction Coefficient) and SAA (Sound Absorption Average) tested in accordance with ASTM C423-09a	
<b>UV PROTECTION</b>	Seal of Approval by the Melanoma International Foundation (MIF) for effectiveness in preventing sun damage to the skin or eyes	

STYLE	4901	4903
<b>WIDTHS</b>	63" and 98" 160 cm and 248.9 cm	63" and 98" 160 cm and 248.9 cm
<b>ROLL LENGTH</b>	30 Linear Yards 27.4 Linear Meters	30 Linear Yards 27.4 Linear Meters
<b>COMPOSITION</b>	17% Polyester 83% Vinyl on Polyester	17% Polyester 83% Vinyl on Polyester
<b>MESH WEIGHT</b>	15.85 oz/yd <sup>2</sup> 573 g/m <sup>2</sup>	14.9 oz/yd <sup>2</sup> 505.20 g/m <sup>2</sup>
<b>FABRIC THICKNESS</b>	0.028 in 0.71 mm	0.027 in 0.69 mm
<b>OPENNESS FACTOR</b>	Approximately 1%	Approximately 3%
<b>UV BLOCKAGE</b>	Approximately 99%	Approximately 97%
<b>ACOUSTICAL VALUE</b>	NRC .60 / SAA .59	NRC .25 / SAA .25

**PHIFER**  
INCORPORATED

P. O. Box 1700 • Tuscaloosa, Alabama 35403-1700 USA  
Phone: 205.345.2120 • FAX: 205.391.0799  
Toll Free USA/Canada: 1.800.221.5497  
[phifer.com](http://phifer.com) • ISO Registered



© SheerWeave is a registered trademark of PHIFER INCORPORATED.  
© MICROBAN is a registered trademark of Microban Products Company.  
TM UL, the UL logos and the UL mark are trademarks of UL LLC.  
Photo courtesy of DRAPER INC., Spiceland, Indiana, USA.  
© PHIFER INCORPORATED V20 111620 3033840