

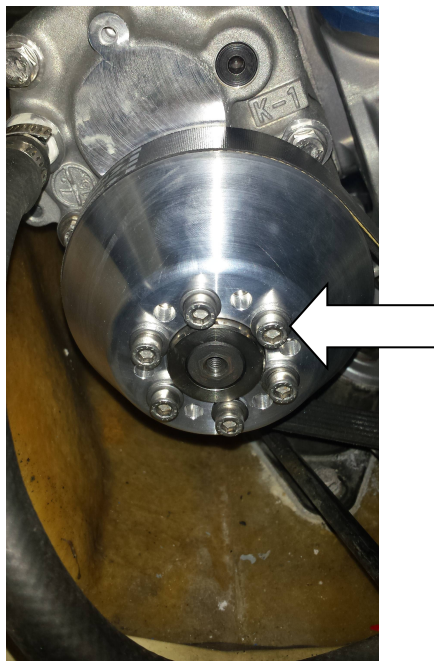
Kawasaki Ultra 300X and 310X Stage 3 Pulley Installation Instructions

Necessary Tools:

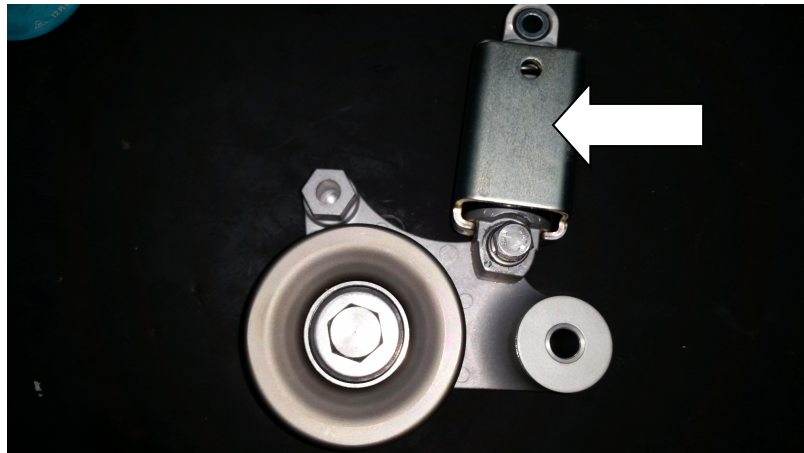
- 1) Breaker Bar
- 2) 3/8 to 1/2 Adapter
- 3) Ratchet
- 4) Metric Allen Key Set
- 5) OEM Spring Clamp

OE Pulley Removal:

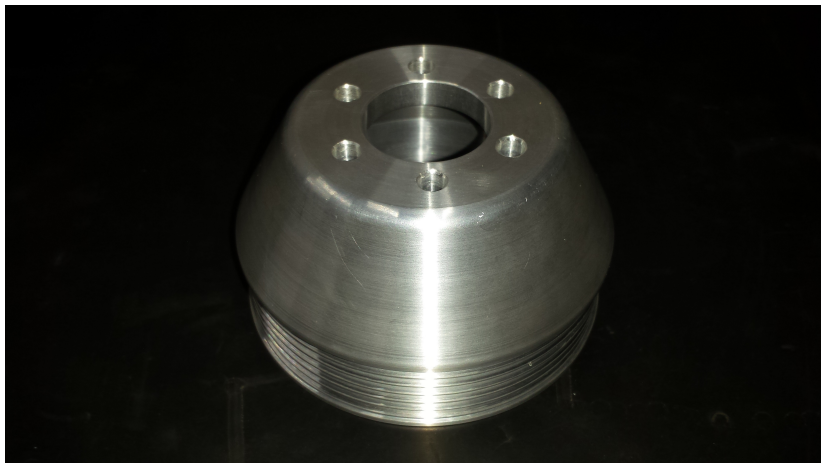
- 1) Loosen M6 socket cap screws on OE pulley. Note: leave tensioner and belt in place for this.



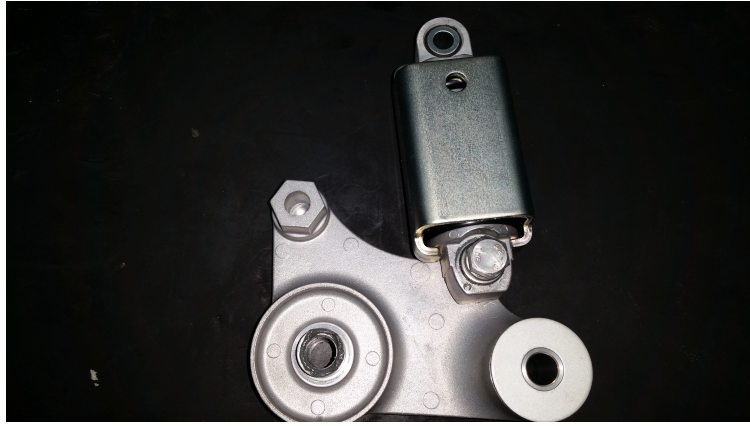
- 2) Using OE Spring Retaining Bracket, compress the spring enough to slide the bracket on. Remove tension, this will remove tension off your belt. NOTE: Not using this bracket can permanently damage your tensioner! If you need one, please contact us for ordering.



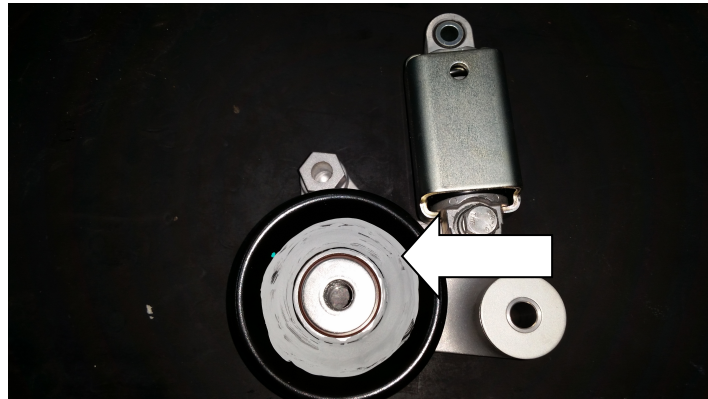
- 3) Now you can replace the OE pulley with the smaller stage 3 pulley. Tighten the socket cap screws as much as possible, we will tighten those firmly later on.



- 4) Carefully loosen bolt on OE idler pulley. And remove idler pulley.



- 5) Now install KP oversize idler pulley and hand tighten nut for now.



- 6) If you have removed your tensioner for this installation, now would be a good time to re-install it. By now, you can see there is much more slack in the belt and the new idler pulley is significantly larger than OE.
- 7) Using the supplied socket, you may now remove the clamp from the tensioner spring. Make sure you have your belt on both pulleys!



- 8) Torque socket cap bolts on pulley to 106 in.lb. Torque bolt on new idler to 33 ft.lb.

NOTE*** This pulley provides 3 extra pounds of boost. Your stock setup will run dangerously lean if you do not adjust fuel. We have a few options for adjusting fuel. You will require an AFR setup to tune properly. You can either run our fuel tuner, which is easiest or a rising rate fuel pressure regulator with 340 LPH fuel pump which supports ALL performance fuels. These two setups work great with a stock tune, but a performance tune is necessary to see full benefits from pulley. Please contact us if you need help with a proper setup.

Installation Complete!

Installation guide provided by kawiperformance.com

****This is property of Kawi Performance LLC. DO NOT COPY!****