

# POWERS' RATINGS

Volume 3 Issue 12

Week Twelve Issue

© 2025 BP Sports, LLC

## Powers' Ratings Computer Plays in CFB 506-441-14 (53.4%) All-Time 2016-2024!!!

### Week 11 News and Notes!

For those of you that are new, in this section we'll recap what happened last week specifically, the misleading finals, the key injuries, the bad beats and the line moves. We'll include most of these recaps here, therefore you don't have to waste time reading about them in my game-by-game write-ups for the upcoming week. Without further adieu, here's a run down of what happened last week in the world of CFB.

#### Week 11 Trends Favorites-Dogs

Straight Up  
ATS

#### Home-Away

Straight Up  
ATS

#### Totals (O/U)

Over-Under

#### Season To-Date

#### Favorites-Dogs

Straight Up  
ATS

#### Home-Away

Straight Up  
ATS

#### Totals (O/U)

Over-Under

344-331-13

457-224

356-312-13

344-336-8

#### Largest Favorites to Cover:

Notre Dame (-31) vs Navy, 49-10

Toledo (-16) vs Northern Illinois, 42-3

#### Biggest Money line Upsets:

Sam Houston State +861 won 21-17 at Oregon State (+21)

California +706 won 29-26 in OT at Louisville (+18.5)

Wisconsin +328 won 13-10 vs Washington (+11)

Connecticut +246 won 37-34 vs Duke (+7.5)

Iowa State +237 won 20-17 at TCU (+7.5)

Missouri State +230 won 21-17 at Liberty (+7.5)

#### ATS Notables With Margins Per Game:

##### 9-1 ATS teams with cover margin:

Texas Tech 8.0

##### 7-1-1 ATS teams with cover margin:

Ohio State 6.6

##### 8-2 ATS teams with cover margin:

Vanderbilt 8.3

Memphis 4.8

Mississippi State 4.0

##### 7-2 ATS teams with cover margin:

Utah 11.1

North Texas 9.2

San Diego State 9.1

Pittsburgh 7.9

Utah State 6.1

Western Kentucky 1.8

##### 1-8 ATS teams with non-cover margin:

Georgia State -9.9

##### 2-7 ATS teams with non-cover margin:

Massachusetts -11.6

UL-Monroe -10.8

Sam Houston State -8.7

Oklahoma State -8.6

Penn State -8.0

Virginia Tech -6.8

Northern Illinois -6.3

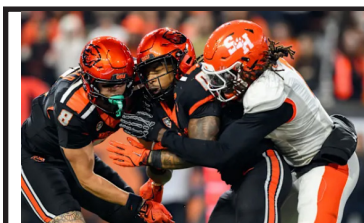
Texas State -5.0

Navy -4.8

Baylor -3.5

Texas -2.9

Stanford 2.2



Sam Houston State pulled off one of the biggest upsets of the season last Saturday as they beat Oregon State 21-17 as 21-point underdogs. The Bearkats were +861 on the money-line. It was also arguably the most misleading game of the season (see right).

Florida Atlantic (-4) beat Tulsa 40-21. However, Tulsa had a 431-420 yard edge but were -2 in turnovers.

Wake Forest (+6.5) upset Virginia 16-9. However, Virginia had a 327-203 yard edge but were -3 in turnovers. Wake Forest got a 88-yard punt return TD and UVA was stopped on downs at the Wake 5-yard line. UVA hadn't lost a fumble in any game all year. They lost three in this game.

Rice (-1) beat UAB 24-17. However, UAB had a 315-232 yard edge but somehow couldn't manage a single point in the second half.

Iowa State (+7.5) upset TCU 20-17. However, TCU had a 432-272 yard edge. TCU led 17-6 in the fourth quarter but a 79-yard punt return TD ended up being the game-winner for Iowa State.

Arizona (-6) beat Kansas 24-20. However, Kansas had a 369-323 yard edge. Up 20-17, Kansas missed a FG and Arizona went 80 yards in 9 plays getting a TD with :39 left for the win.

Air Force (+6.5) upset San Jose State 26-16. However, San Jose State had a 435-302 yard edge but were -3 in turnovers.

Kennesaw State (-11.5) beat New Mexico State 24-21. Kennesaw State had a 427-316 yard edge and led 24-0.

Sam Houston State (+21) upset Oregon State 21-17. It was maybe the most misleading game of the season as Oregon State had a dominant 474-157 yard edge. Oregon State had two interceptions, two missed FG's and were stopped on downs at the Sam Houston 10-yard line. Sam Houston got a 98-yard kick return TD and a 31-yard blocked punt return for a TD.

### Bad Beats

Miami (-28.5) beat Syracuse 38-10. Syracuse scored a TD with the 3rd string QB with just :21 left to get the backdoor.

Delaware (+6) upset Louisiana Tech 25-24. Louisiana Tech was -219 on the money-line. LT led 24-16 in the final minute. Delaware got a TD with :34 left but missed the 2-point conversion. Delaware would recover the onside kick and then got a 51-yard FG for the win.

### Injuries/Personnel News

-Virginia QB Chandler Morris (concussion) is questionable.

-Navy QB Blake Horvath (upper body) was a late scratch vs Notre Dame last week. He is questionable this week. He's Navy's leading rusher with 926 yards.

-Oregon WR leading WR Dakorien Moore and TE Kenyon Sadiq missed last week's game vs Iowa. Both are questionable this week.

-Louisiana Tech QB Blake Baker (knee) is out for the season.

-Memphis QB Brendon Lewis (ankle) is questionable this week.

-Sam Houston State QB Hunter Watson (knee) is out this week.

-Boise State will start Max Cutforth at QB this week with Madsen out.

-Texas S Michael Taaffe and WR Ryan Wingo both practiced Monday.

-Florida WR Eugene Wilson (ankle) is out for the season. In other news, Florida benched DJ Lagway for true freshman Tramell Jones in last week's game.

-Washington RB Jonah Coleman and WR Denzel Boston are questionable.

-LSU WR Nic Anderson will be out this week vs Arkansas.

-Wisconsin head coach Luke Fickell will return in 2026 according to AD McIntosh.

### Brad Powers' Radio/TV/Podcast Weekly Schedule This Fall

Per my new contracts with Covers and Hammer Betting Network (Hit the Books), I'm not doing as many shows this year.

Mon 12:00pm ET. Early best bets with Joe Osborne @Covers on Twitter/YouTube

Mon 5:00pm ET. Weekend recap with Joey Knish @HitTheBooks on YouTube

Thu 12:00pm ET. Big game bets with Joe Osborne @Covers on Twitter/YouTube.

Fri 9:00am ET. Weekend preview on Bill King show @NashSportsRadio

Fri 5:00pm ET. Weekend preview with Joey Knish @HitTheBooks on YouTube.

Sat 1:30pm ET. Halftime show of Big Noon Kickoff with with Joey Knish @HitTheBooks on YouTube.

@ indicates the Twitter handle.

### Recapping Week 11 Best Bets

Our power ratings plays went 0-2 in week 11. Those are the plays that are 3 points or more off the Vegas lines. They have not done well the last three years and we're debating using them next year. VIP customers are 45-41-1 on top plays and 148-139-2 overall so far this season (see below).

### VIP Records:

CFB Plays: 30-30-1 -4.43 units

CFB Leans: 54-48

NFL Plays: 15-11 +2.85 units

NFL Regular Season Leans: 45-50-1, NFL Preseason Leans: 4-0

### Misleading Finals and Blown Leads

Clemson (-1.5) beat Florida State 24-10. Florida State had a 360-319 yard edge but were -2 in turnovers. When out-gaining an opponent by 40 yards or more this year, Power 4 teams are 267-34 (88.7%). FSU is 4-4. Only 3 other Power 5 teams in the playoff era have lost 4 of their first 9 games with a 40+ yardage advantage.

# CFB and NFL Schedules with Vegas and Brad Powers Lines Week 12 Nov 12th-Nov 17th

<b>Wednesday, Nov 12th</b>					375 Florida Atlantic	4:00	63.5	63.5	63
305 Northern Illinois	7:00	-11.5	-11	-11	376 Tulane	ESPN+	-16.5	-17.5	-17
306 Massachusetts	ESPN	43.5	43.5	43	377 South Carolina	12:00	47.5	48	51
307 Toledo	7:00	-3	-4.5	-3	378 Texas A&M	ESPN	-18.5	-19	-19
308 Miami, OH	ESPN2	44.5	45.5	45	379 Arkansas	12:45	55.5	56	55
309 Buffalo	7:00	43.5	44	45	380 LSU	SECN	-6.5	-5.5	-7
310 Central Michigan	CBSSN	-2	-2	-3	381 South Alabama	3:30	-4.5	-4.5	-4
<b>Thursday, Nov 13th</b>					382 UL-Monroe	ESPN+	52	51.5	50
311 N.Y. Jets	8:15	44.5	43	41	383 North Texas	2:00	-18	-18.5	-17
312 New England	Prime	-10.5	-13	-13	384 UAB	ESPN+	70.5	69.5	65
313 Troy	7:30	53.5	52.5	51	385 Maryland	3:30	53.5	53.5	54
314 Old Dominion	ESPN	-10.5	-11	-11	386 Illinois	FS1	-14	-14.5	-14
<b>Friday, November 14th</b>					387 Michigan	12:00	-9	-11.5	-10
315 Clemson	7:30	50	50.5	52	388 Northwestern	FOX	41.5	41	42
316 Louisville	ESPN	-3	-3	-4	389 Kennesaw State	8:00	-3	-3	-2
317 Minnesota	9:00	45.5	44	48	390 Jacksonville State	ESPN	53.5	54.5	54
318 Oregon	FOX	-22.5	-25	-24	391 Colorado State	3:00	52.5	53.5	52
<b>Saturday, Nov 15th</b>					392 New Mexico		-14	-14.5	-14
319 Coastal Carolina	6:00	58	61	60	393 TCU	10:15	52.5	52	50
320 Georgia Southern	ESPN+	-2	-2.5	-4	394 BYU	ESPN	-6	-4.5	-4
321 Air Force	12:00	64	63.5	63	395 West Virginia	1:00	48.5	47.5	49
322 Connecticut	CBSSN	-8	-7	-7	396 Arizona State	TNT	-10	-11	-11
323 UTSA	12:00	-18	-18.5	-18	397 UTEP	3:00	50.5	48.5	50
324 Charlotte	ESPN+	59.5	60	58	398 Missouri State	ESPN+	-3	-4.5	-4
325 Texas	7:30	49.5	48.5	49	399 Wyoming	10:30	39	40	43
326 Georgia	ABC	-6.5	-6	-7	400 Fresno State	FS1	-4	-3.5	-5
327 Appalachian State	3:30	55.5	53.5	54	401 Iowa	3:30	49.5	49.5	48
328 James Madison	ESPN+	-19	-21	-20	402 USC	BTN	-6.5	-6.5	-6
329 Arizona	12:00	56.5	56	55	403 Purdue	7:00	55	53.5	51
330 Cincinnati	FS1	-6	-6.5	-7	404 Washington	FS1	-16.5	-17	-17
331 Memphis	4:00	60.5	59.5	59	405 Middle Tennessee	3:30	58.5	56.5	54
332 East Carolina	ESPN	-2.5	-3	-3	406 Western Kentucky	ESPN+	-14	-13.5	-12
333 Marshall	2:00	-7	-7.5	-7	407 San Jose State	3:30	-8.5	-9.5	-10
334 Georgia State	ESPN+	64.5	63.5	63	408 Nevada	CBSSN	52.5	52.5	50
335 South Florida	12:00	-10	-10.5	-11	409 New Mexico State	4:15	62	61.5	62
336 Navy	ESPN2	65.5	64.5	63	410 Tennessee	SECN	-38	-39.5	-42
337 Georgia Tech	3:30	-16.5	-16.5	-15	411 Liberty	5:00	-3	-3	-1
338 Boston College	ACCN	58	59	57	412 FIU	ESPN+	54.5	51.5	51
339 Virginia	3:30	58.5	58.5	56	413 Utah State	7:00	71.5	71	67
340 Duke	ESPN2	-6.5	-4	-6	414 UNLV	CBSSN	-4.5	-6	-5
341 Virginia Tech	7:30	54.5	54.5	55	415 Louisiana Tech	10:00	47	44.5	45
342 Florida State	ACCN	-11.5	-13.5	-13	416 Washington State	CW	-6.5	-7.5	-9
343 Wisconsin	12:00	46.5	44	43	417 Boise State	10:30	42.5	41	42
344 Indiana	BTN	-30.5	-29.5	-29	418 San Diego State	CBSSN	-2.5	-3	-2
345 NC State	3:30	56.5	55.5	56	<b>Sunday, November 16th</b>				
346 Miami, FL	ESPN	-15	-14.5	-16	451 Washington	9:30a	45.5	47.5	49
347 Penn State	3:30	-7	-7.5	-7	452 Miami	NFLN	PK	-3	-3
348 Michigan State	CBS	50.5	50	49	453 Green Bay	1:00	-7	-7	-6
349 UCLA	7:30	48.5	48.5	48	454 N.Y. Giants	FOX	45.5	43.5	44
350 Ohio State	NBC	-31.5	-32	-30	455 Tampa Bay	1:00	49.5	48	47
351 Notre Dame	12:00	-10	-12.5	-12	456 Buffalo	CBS	-6	-5.5	-5
352 Pittsburgh	ABC	56.5	55.5	58	457 Cincinnati	1:00	48.5	49	50
353 North Carolina	4:30	39.5	38.5	40	458 Pittsburgh	CBS	-5.5	-5.5	-6
354 Wake Forest	CW	-6.5	-6.5	-6	459 Houston	1:00	-7.5	-7	-6
355 Eastern Michigan	12:00	-1	-2.5	-2	460 Tennessee	FOX	37.5	38	40
356 Ball State	ESPN+	49	50.5	50	461 Chicago	1:00	46.5	48.5	50
357 Oklahoma	3:30	46.5	46	46	462 Minnesota	FOX	-2.5	-3	-4
358 Alabama	ABC	-6.5	-6	-4	463 Carolina	1:00	43.5	42.5	42
359 Delaware	7:00	-10	-9.5	-10	464 Atlanta	FOX	-3.5	-3.5	-4
360 Sam Houston State	ESPN+	58	56.5	56	465 L.A. Chargers	1:00	-1	-3	-2
361 Oregon State	1:00	47.5	-2.5	-1	466 Jacksonville	CBS	43.5	44	44
362 Tulsa	ESPN+	-1	48.5	47	467 Seattle	4:05	47.5	48.5	49
363 Texas State	3:30	67	65.5	64	468 L.A. Rams	FOX	-2.5	-3	-3
364 Southern Miss	ESPN+	-7	-4	-6	469 San Francisco	4:05	-1	-3	-2
365 Central Florida	3:30	48.5	48	52	470 Arizona	FOX	47	48	48
366 Texas Tech	FOX	-24	-23.5	-22	471 Baltimore	4:25	-8	-7.5	-9
367 Kansas State	12:00	-20	-20	-20	472 Cleveland	CBS	41.5	39.5	41
368 Oklahoma State	ESPN	54.5	52.5	54	473 Kansas City	4:25	-2.5	-4	-4
369 Utah	7:00	-9	-8.5	-8	474 Denver	CBS	45.5	44.5	42
370 Baylor	ESPN2	61.5	60.5	60	475 Detroit	8:20	47.5	46.5	45
371 Florida	7:00	53.5	53.5	54	476 Philadelphia	NBC	-1	-2.5	-3
372 Ole Miss	ESPN	-14	-15	-14	<b>Monday, November 17th</b>				
373 Mississippi State	7:45	51.5	51.5	54	477 Dallas	8:15	-3.5	-3.5	-4
374 Missouri	SECN	-7	-7	-8	478 Las Vegas	ABC	51	50	50



## **Games in Rotation Order**

## **HOME TEAM IN CAPS**

### **Wednesday, November 12th**

**Northern Illinois 27 MASSACHUSETTS 16.** Two of the worst bets in CFB this year. UMass is 2-7 ATS with an average non-cover of 11.6 ppg. NIU is 2-7 ATS with an average non-cover of 6.3 ppg. UMass is easily the worst team in CFB but tough laying doubles with a NIU offense that averages 12.2 ppg.

**Toledo 24 MIAMI, OH 21.** Toledo is No. 3 in the country with a +2.5 ypp margin. However, Toledo is also No. 1 in the country the last 5 years suffering 18 outright upset losses. We like Miami who should have upset Ohio last week and boast a 19-4 record in conference action the last 3 years.

**CENTRAL MICHIGAN 24 Buffalo 21.** Buffalo has the much better ypp margin (+0.8 vs +0.1) but CMU has played a tougher schedule and are in better recent form with three straight covers while Buffalo has covered once in their last 7.

### **Thursday, November 13th**

**OLD DOMINION 31 Troy 20.** Both have exceeded preseason expectations as they've already topped their win totals. ODU is much better in ypp margin (+1.9 vs -0.6) and has the much more explosive offense. We haven't bet side or total.

### **Friday, November 14th**

**LOUISVILLE 28 Clemson 24.** This is the first time this season that Clemson is an underdog. The Tigers are remarkably 4-5 despite being favored in all 9 games. They are off their best performance of the season while Louisville is off by far their worst losing outright as an 18.5-point favorite. Jeff Brohm teams usually play to the level of the competition. We like them here especially at -2.5.

**OREGON 36 Minnesota 12.** Huge discrepancy in ypp margin as Oregon is +3.3 (No. 1) while Minnesota is -0.1 despite a 6-3 record. The Ducks are on a short week after a 60-minute battle with Iowa while Minnesota is off a bye. Check injury status for Oregon WR Moore and TE Sadiq who both missed last week. We like OVER.

### **Saturday, November 8th**

**GEORGIA SOUTHERN 32 Coastal Carolina 28.** Coastal already clinched bowl eligibility despite being -80 ypg on the season. Georgia Southern is off one of their best performances of the season upsetting rival Appalachian State despite settling for four short FG's. They have extra time to prep playing last Thursday. We bet GS!

**CONNECTICUT 35 Air Force 28.** Air Force is off a misleading upset win over San Jose State and still has bowl hopes if they can win out. UConn is off a big upset over Duke as the Huskies have a Top 20 offense and also lead the nation in sacks on D. They have lost outright as a favorite a couple times this year though. We lean AF +7.5.

**Utsa 38 CHARLOTTE 20.** UTSA has been up and down this year and coming off a blowout loss to USF. Charlotte has been mostly bad with a banged up roster under a new head coach. Pass.

**GEORGIA 28 Texas 21.** Texas is off a bye. Prior they played their best football of the season (albeit for 45 minutes vs Vanderbilt). The Horns are still 2-7 ATS on the season. Georgia is off a comfortable win at Mississippi State. Both teams are +1.1 in ypp margin but UGA has played the tougher schedule. They also beat Texas twice last year in the underdog role. We bet UGA -5.5.

**JAMES MADISON 37 Appalachian State 17.** JMU might be the best Group of 5 team right now as they've won 7 straight (we still have USF higher in our power ratings). App State has been a mess under first-year coach Dowell Loggains. This is their largest ever underdog role in Sun Belt action (+17.5 vs Georgia Southern back in 2014...first year in conference). We lean with them especially at +21.5.

**CINCINNATI 31 Arizona 24.** We like the spot here for Cincinnati. It's a "buy low" after their worst performance of the season getting crushed at Utah. They had a bye week to re-group. Meanwhile, Arizona is off a misleading win over Kansas where they should have lost outright. They've been much better at home than away this year.

**EAST CAROLINA 31 Memphis 28.** One-factor handicap here as you have to check the status of Memphis QB Lewis who is questionable. He's been banged up as of late but has been able to play. Memphis is off a crushing loss to Tulane that probably ended their playoff hopes. East Carolina has quietly been impressive this year with a +142 ypp margin (No. 13) and a +16.6 ppg margin (No. 15) which are both better than Memphis.

**Marshall 35 GEORGIA STATE 28.** Georgia State is the worst ATS team in the country at 1-8 ATS failing to cover their games by an average of 9.9 ppg. They're allowing a nation-worst 40.7 ppg on defense. That's not good news vs a high-flying Marshall team that has seen their games go OVER the total in each of the last 6 by an average of 19 ppg.

**South Florida 37 NAVY 26.** Navy benefited from a weak schedule this year (No. 135 vs USF No. 66) and are now starting to get exposed having lost two straight. QB Horvath was a late-scratch last week and is questionable here. The Middies have failed to cover 6 straight games by 7.5 ppg. Not good news for a USF team making a G5 playoff push.

**Georgia Tech 36 BOSTON COLLEGE 21.** BC has now lost 9 straight games. After two solid efforts vs Louisville and Notre Dame, they got drilled in the second half last week vs SMU. Now they face a fresh GT team off a bye. If GT wins the next two, they're heading to the ACC Championship. We bet BC +17.5 but are passing at current.

**DUKE 31 Virginia 25.** UVA's luck finally ran out last week. They hadn't lost a fumble all season but lost 3 in the upset loss to Wake Forest. Now they face a Duke team that is also coming off an upset loss. Check the status of UVA QB Morris who was KO'd last week (concussion). We like Duke but the early market moves say Morris is playing.

**FLORIDA STATE 34 Virginia Tech 21.** FSU remains impressive in the box score but not on the scoreboard. The Noles are just 4-4 when outgaining their opponents by 40 yards or more this year. The rest of CFB is 263-30 (90%) in that role this season. VT is off a bye. They still have a shot at a bowl but the market is telling us FSU is the side.

**INDIANA 36 Wisconsin 7.** Indiana got a thrilling final drive to beat Penn State last week. The Hoosiers are getting a lot of love (especially QB Mendoza) but we think they'll get exposed in the Big Ten Championship game. On the other side, Wisconsin has been feisty on defense but the Badgers have the worst Power 4 offense. They're off an upset win over Washington but we can't see them doing much here.

**MIAMI 36 NC State 20.** Tough trusting this Miami team that has lost 4 times as a big favorite the last couple of years. NC State upset Georgia Tech prior to the bye. The Wolfpack offense can be dangerous but their defense ranks No. 118 in ypp allowed (Miami No. 9). We actually lean Miami here who needs style points to get a CFB playoff spot.

**Penn State 28 MICHIGAN STATE 21.** Our ratings say Penn State is the play here but the spot screams Michigan State. The Spartans are off a bye and prior to it outgained Minnesota by 166 yards. Penn State is off an emotional loss to Indiana where they gave an "A" effort. We're going to keep an eye on who is expected to start at QB for MSU. We prefer Milivojevic to Chiles at this point.

**OHIO STATE 39 UCLA 9.** The Buckeyes just had their first non-cover dating back to last season's Michigan game. They "only" beat Purdue by 24 as a 29-point favorite. Now they're laying 32 to a UCLA team that looks like the "interim bump" is starting to fade as they lost outright to Nebraska last week (Huskers had a true frosh backup QB). Ohio State's defense is by far the best unit in CFB on either side of the ball. However, the offense's slow tempo (No. 134) makes it tough for us to lay this kind of number. Pass.

**Notre Dame 35 PITTSBURGH 23.** ESPN College Gameday will be here as this game serves as a playoff eliminator for ND considering they only have Syracuse and Stanford left (28-point or more favorite in each). Since 2000, ND is 35-0 straight up laying 7 or more on the road (not a typo 35 and 0!) and 21-14 ATS with an average cover of 5.4 points per game. Pitt has been red-hot with 5 straight wins and covers and is coming off a bye. However, for the 7th straight week, ND is taking money in the mid-to-late week markets. We prefer OVER.

**WAKE FOREST 23 North Carolina 17.** Wake is coming off an upset win over Virginia that got them to bowl eligibility. They did get outgained by more than 100 yards, were +3 in TO's and got an 88-yard punt return TD. They're playing a NC team off back-to-back wins. We would need a "+7" to show to back NC though.

**Eastern Michigan 26 BALL STATE 24.** EMU got a nice win and cover over BG last week. They're taking on a Ball State team that should have lost outright to Kent State. Our ratings lean EMU but tough backing them as a road favorite. Pass.

**ALABAMA 25 Oklahoma 21.** We like the spot here for Oklahoma coming off a bye with more urgency as a loss eliminates the Sooners from the CFB Playoffs. Alabama continues to have more impressive final scores than box scores. Per Bill Connelly, their post-game win expectancy would have them with 6 wins, not 8. This makes them a little over-valued in the market. Oklahoma is better in ypp margin (+1.3 vs +0.9), have the better defense and better run game.

**Delaware 33 SAM HOUSTON STATE 23.** Sam Houston is off one of the biggest upsets of the season as they beat Oregon State 21-17 as 21-point underdogs. It was the most misleading final of the season as the Bearcats were outgained 317 yards! They got a pair of non-offensive TD's. Their QB Watson is out this week. Meanwhile, Delaware scored 9 points in the final minute to upset Louisiana Tech last week. We bet Delaware.

**Oregon State 24 TULSA 23.** How does Oregon St react to losing another game they had no business losing? The Beavers outgained Sam Houston by 317 yards...not a typo...317 YARDS but lost outright as 21-point favorites. Now they're laying points on the road? Lean Tulsa. **SOUTHERN MISS 35 Texas State 29.** Texas State lost yet another game as a favorite last week. That's now 9 losses outright as a favorite the last two years. They also lost three starters to a post-game fight who were suspended for this game. DE Tymere Jackson (352 snaps), CB Khamari Terrell (506 snaps) and OL Justin DeLeon (292 snaps). They do have the better ypp margin and have played the tougher schedule (No. 77 vs No. 117). We lean Southern Miss at current.

**TEXAS TECH 37 Central Florida 15.** Texas Tech had a dominant win over BYU last week on their biggest stage of the season so far. The Red Raiders have the best ATS record in the country at 9-1 ATS covering their games by an average of 8 ppg. Call us suckers for punishment because we bet UCF +24.5.

**Kansas State 37 OKLAHOMA STATE 17.** Both teams come in off a bye with not much to play for. Kansas State is out of Big 12 contention, Oklahoma State is just playing out a season with an interim. Pass.

**Utah 34 BAYLOR 26.** When they play their "A" game like they did vs Cincinnati, you could make a case that Utah is a sure-fire Top 10 team and maybe even a Top 5 team. They need help when it comes to the Big 12 championship and are unlikely to pass up SEC teams for an at-large spot. Will they look for style points if given the opportunity?

**OLE MISS 34 Florida 20.** While it is not a liquid market, it is interesting to note that the "look-ahead" line on this game had Ole Miss -7.5. The Rebels crushed FCS Citadel 49-0 (didn't cover). So how are we sitting at 15.5? How about Florida losing 38-7 as a 4.5-point favorite. Did they wave the white flag on the season? Market thinks so. Our ratings can't get there.

**MISSOURI 31 Mississippi State 23.** Missouri QB Zollers was overwhelmed in his first start going just 7 of 22 for 77 yards vs Texas A&M. He should have an easier time vs a Mississippi state defense that ranks No. 91. The Bulldogs still need another win for bowl eligibility. Is Missouri HC Drinkwitz going to be there next year?

**TULANE 40 Florida Atlantic 23.** Tulane got a big win over Memphis last week to remain in the G5 playoff hunt. However, it looks like North Texas and USF could have the edge when it's all said and done in the ratings. We didn't bet side or total.

**TEXAS A&M 35 South Carolina 16.** Even though they were playing against a backup QB last week, we came away super impressed with Texas A&M's 21-point win at Missouri. Last we checked the backup QB didn't play on defense and the Aggies put up 464 yards on a defense that allows just 270. South Carolina is off a bye. Their No. 129 offense has no chance to keep pace. Lean OVER.

**LSU 31 Arkansas 24.** LSU played hard last week at Alabama but it wasn't enough. Will they go to Van Buren at QB here? Arkansas has not shown quit on the season. They are 2-7 SU but are +54 ypg and are still +19 in points margin. However, they've been eliminated from bowl contention and we're not wild backing interims off a bye.

**South Alabama 27 UL-MONROE 23.** Both teams coming off a bye. Both were not in good form entering it. ULM has lost 5 straight and failed to cover in all 5 prior. South Alabama is on a 1-5 SU and ATS run. We're on the sidelines here.

**North Texas 41 UAB 24.** North Texas will be at least a 2-TD favorite in their remaining 3 games. If they win all 3, they're likely heading to the AAC Championship game with a spot in the CFB playoffs on the line. Not bad for a program that's never reached 10 wins at the FBS level. UAB has been better in the box score than the scoreboard the last two weeks. Our ratings lean UNDER but we haven't bet it yet.

**ILLINOIS 34 Maryland 20.** Illinois comes in off a bye. While they don't have any Big Ten or playoff aspirations, they can still get to 10 wins if they win out (including the bowl). Maryland has lost 5 straight and the cries to fire Locksley are growing.

† **Michigan 26 Northwestern 16.** @Wrigley Field in Chicago, IL. Michigan comes in off a bye. The Wolverines were really banged up prior especially on defense. They only beat Purdue by 5 laying 21. Northwestern is still stuck on 5 wins and we expect max effort. Early week market likes Michigan. We prefer the dog with two slow tempos.

**Kennesaw State 28 JACKSONVILLE STATE 26.** A CUSA Championship preview? Both teams are shockingly 5-0 in conference play entering. Jacksonville State was 25/1 to win the league prior to the season while Kennesaw State was 50/1. We think Jacksonville State has been a little under-valued thanks to their No. 4 rushing offense. Kennesaw is on back-to-back road trips after not covering last week. We bet Jacksonville State +3.5.

**NEW MEXICO 33 Colorado State 19.** Many teams have gotten an interim bump this year. Colorado State is not one of those teams. They've been blown out in each game since the firing of Norvell by a combined 70-10. That's not good news vs a fresh New Mexico team off a bye. We bet New Mexico but the market has really moved.

**BYU 28 TCU 25.** BYU finally got exposed last week in Lubbock as the 29-7 final could have been even worse. The early week market seems to be fading them again here as there were a lot of TCU buyers at "+6.5" and "+6". TCU had a misleading loss to Iowa State (see page 1) and we're expecting a bounce back performance here.

**ARIZONA STATE 30 West Virginia 19.** West Virginia is playing their best ball of the season with back-to-back wins and three straight covers. They are taking on an Arizona State team off a bye. Prior to it, the Sun Devils upset Iowa State thanks to backup QB Jeff Sims setting an ASU QB-record with 228 rushing yards. He's starting again here with Leavitt out for the year. We lean OVER.

**MISSOURI STATE 27 Ute 23.** Missouri State has far exceeded expectations this year. Their season win total was 4.5 and they already have 6. Last week they upset Liberty on the road. Meanwhile, UTEP has been a disappointment. We're passing.

**FRESNO STATE 24 Wyoming 19.** Both teams come in off a bye. Prior to it, Fresno State pulled a massive shocker as they beat Boise State 30-7 as 17.5-point underdogs. It was aided by Boise's QB getting hurt. However, Fresno has been a surprise this year. Wyoming needs to win 2 of their last 3 to get to bowl eligibility. We lean Fresno.

**USC 27 Iowa 21.** USC still has an outside shot at the Big Ten Championship game and also the CFB playoffs provided they win out (at Oregon next week). USC does have an extra day to prep having beat Northwestern last Friday night. Iowa just lost their "all-in" game at home to Oregon losing on a FG late.

**WASHINGTON 34 Purdue 17.** Washington is off an upset loss to Wisconsin last week. They've been eliminated from playoff contention. More pertinent to this game is the status of RB Jonah Coleman and WR Denzel Boston. Both were banged up last week and are questionable here. If neither play, Purdue is worth a look. We lean UNDER.

**WESTERN KENTUCKY 33 Middle Tennessee 21.** Middle Tennessee got boat-raced at home as a 1-point favorite last week to FIU. Have they waved the white flag on the season now at 1-8? This line seems to think so. WKU is still in the race for the CUSA Championship. The Hilltoppers are 7-2 SU and 7-2 ATS.

**San Jose State 30 NEVADA 20.** It's beginning to sound like a broken record but this is the week where we start to question if teams have decided to pack their bags for the season. It certainly looked that way for Nevada last week as they trailed Utah State 41-0 at halftime last week. San Jose State needs to win out to get to a bowl. We like them at -9.5.

**TENNESSEE 52 New Mexico State 10.** We're not wild about laying big points but we can make exceptions for Tennessee. Last year they beat UTEP 56-0, Kent State 71-0, Chattanooga 69-3. This year they rolled East Tennessee State 72-17 and UAB 56-24 (Blazers backdoored them). We lean Tennessee.

**Liberty 26 FLORIDA INTERNATIONAL 25.** Liberty continues to disappoint. They've lost six games outright as a favorite the last two years including last week to Missouri State that basically ended their CUSA hopes. Now they're laying points on the road to a FIU team that is still looking for a bowl berth? We bet FIU.

**UNLV 36 Utah State 31.** UNLV is off their best defensive performance of the season as they limited Colorado State to 10 points and 292 yards. The Rebels offense continues to hum along ranking No. 9 in yards per play. They'll need both here vs a Utah State team that has been better than expected under first-year head coach Bronco Mendenhall. We're waiting for a possible "+7" to show.

**WASHINGTON STATE 27 Louisiana Tech 18.** Louisiana Tech led Delaware 24-16 in the final minute last week and lost 25-24. They also lost their starting QB Baker for the season. Now they're making a very long trip to Pullman taking on a Washington State team that is fresh off a bye and still thinking about a bowl game. Easy to see why the early week market is on Wazzu here.

**SAN DIEGO STATE 22 Boise State 20.** Boise State will be starting Max Cutforth at QB here with Maddux Madsen out. The Broncos did have two weeks to get him ready. He wasn't ready when he had to come in vs Fresno State two weeks ago as the Broncos got crushed 30-7 as 17.5-point favorites. Speaking of getting crushed as a favorite. San Diego State was laying 6.5 at Hawaii last week. The Aztecs had won and covered in six straight games. They lost 38-6! We expect both to be in better form here. The winner is likely heading to the Mountain West Championship game, the loser joins a log-jam of 2-loss teams.



## 2025 College Football Power Ratings (Vegas Ratings Not AP Poll Style)

Rk	School	Start	Now	Diff	Rk	School	Start	Now	Diff	Rk	School	Start	Now	Diff
1.	Ohio State	90.15	92.15	+2.0	51.	Virginia	66.46	67.96	+1.5	101.	Kennesaw State	44.36	54.36	+10.0
2.	Indiana	79.40	90.90	+11.5	52.	NC State	69.25	67.75	-1.5	102.	South Alabama	59.62	54.12	-5.5
3.	Texas A&M	83.40	89.40	+6.0	53.	Northwestern	63.23	67.73	+4.5	103.	Marshall	52.60	54.10	+1.5
4.	Notre Dame	87.28	88.78	+1.5	54.	Tulane	67.67	67.67	0.0	104.	Liberty	60.10	53.60	-6.5
5.	Oregon	85.50	87.00	+1.5	55.	UCF	66.14	67.14	+1.0	105.	Arkansas State	52.96	53.46	+0.5
6.	Georgia	88.75	86.75	-2.0	56.	Memphis	65.38	66.88	+1.5	106.	Georgia Southern	59.69	53.19	-6.5
7.	Texas Tech	76.47	86.47	+10.0	57.	Wake Forest	59.13	66.13	+7.0	107.	Western Kentucky	53.60	53.10	-0.5
8.	Alabama	89.10	86.10	-3.0	58.	East Carolina	56.93	65.93	+9.0	108.	Jacksonville State	51.60	52.60	+1.0
9.	Ole Miss	80.86	83.86	+3.0	59.	Minnesota	72.72	65.72	-7.0	109.	Appalachian State	55.47	52.47	-3.0
10.	Utah	75.86	83.36	+7.5	60.	Rutgers	70.65	65.65	-5.0	110.	Florida Atlantic	50.93	52.43	+1.5
11.	Miami (FL)	81.09	83.09	+2.0	61.	Boise State	73.73	65.23	-8.5	111.	Rice	51.09	51.59	+0.5
12.	Oklahoma	81.64	82.64	+1.0	62.	Maryland	63.68	65.18	+1.5	112.	Central Michigan	48.48	51.48	+3.0
13.	Texas	89.56	82.56	-7.0	62.	Michigan State	68.68	65.18	-3.5	113.	Coastal Carolina	55.41	51.41	-4.0
14.	USC	79.03	82.03	+3.0	64.	Old Dominion	58.87	64.87	+6.0	114.	Missouri State	46.24	51.24	+5.0
15.	Tennessee	82.07	81.07	-1.0	65.	UCLA	70.20	64.70	-5.5	115.	Buffalo	57.48	50.98	-6.5
16.	Vanderbilt	72.89	79.89	+7.0	66.	Wisconsin	74.06	64.06	-10.0	116.	Delaware	47.92	50.42	+2.5
17.	Michigan	83.48	79.48	-4.0	67.	Virginia Tech	70.38	63.88	-6.5	117.	UAB	48.97	49.97	+1.0
18.	Iowa	76.85	78.35	+1.5	68.	California	63.37	63.87	+0.5	118.	Tulsa	44.44	49.94	+5.5
19.	Missouri	76.16	77.16	+1.0	69.	Toledo	61.54	63.04	+1.5	119.	Oklahoma State	63.11	49.61	-13.5
20.	LSU	84.15	77.15	-7.0	70.	San Diego State	52.82	62.82	+10.0	120.	FIU	48.21	49.21	+1.0
21.	Illinois	76.45	76.95	+0.5	71.	North Carolina	67.81	62.31	-5.5	121.	UTEP	47.71	48.71	+1.0
22.	Penn State	90.79	76.79	-14.0	72.	West Virginia	66.26	62.26	-4.0	122.	Colorado State	56.21	48.21	-8.0
23.	Louisville	77.87	76.37	-1.5	73.	Connecticut	59.75	62.25	+2.5	123.	Eastern Michigan	48.38	47.88	-0.5
24.	TCU	76.13	75.63	-0.5	74.	Purdue	55.56	62.06	+6.5	124.	Akron	46.61	47.61	+1.0
25.	Auburn	79.61	75.61	-4.0	75.	Navy	64.95	60.95	-4.0	125.	Northern Illinois	52.66	47.16	-5.5
26.	BYU	72.33	75.33	+3.0	76.	Washington State	55.81	60.81	+5.0	126.	Georgia State	52.31	46.81	-5.5
27.	Washington	75.25	75.25	0.0	77.	UTSA	64.54	60.54	-4.0	127.	Bowling Green	51.81	46.31	-5.5
28.	SMU	78.50	75.00	-3.5	78.	Army	62.52	60.52	-2.0	128.	UL-Monroe	52.22	46.22	-6.0
29.	Pittsburgh	70.73	74.73	+4.0	79.	UNLV	62.47	60.47	-2.0	129.	Nevada	50.08	45.58	-4.5
30.	Cincinnati	70.10	74.60	+4.5	80.	Southern Miss	51.23	60.23	+9.0	130.	Middle Tennessee	46.97	43.97	-3.0
31.	Clemson	85.55	74.55	-11.0	81.	Hawaii	56.38	59.88	+3.5	131.	New Mexico State	46.25	43.75	-2.5
32.	Georgia Tech	74.41	74.41	0.0	82.	Colorado	69.37	59.87	-9.5	132.	Ball State	43.05	42.55	-0.5
33.	Florida State	71.62	74.12	+2.5	83.	New Mexico	48.43	59.43	+11.0	133.	Charlotte	47.51	41.51	-6.0
34.	Arkansas	74.94	73.94	-1.0	83.	Ohio	59.43	59.43	0.0	134.	Kent State	36.96	41.46	+4.5
35.	USF	63.53	73.53	+10.0	85.	Stanford	59.56	58.56	-1.0	135.	Sam Houston State	49.69	40.69	-9.0
36.	Florida	82.36	73.36	-9.0	86.	San Jose State	60.95	57.95	-3.0	136.	Massachusetts	44.23	34.23	-10.0
37.	Mississippi State	67.31	73.31	+6.0	87.	Miami (OH)	56.85	57.85	+1.0					
38.	Kansas State	78.26	73.26	-5.0	88.	Utah State	50.61	57.61	+7.0	Biggest Gains From Start of Season		Biggest Losses From Start of Season		
39.	Baylor	77.59	72.59	-5.0	89.	Boston College	68.34	57.34	-11.0	Indiana	+11.5	Penn State	-14.0	
40.	South Carolina	79.03	72.53	-6.5	90.	Fresno State	58.23	57.23	-1.0	New Mexico	+11.0	Oklahoma State	-13.5	
41.	Duke	70.50	72.00	+1.5	91.	Syracuse	66.62	57.12	-9.5	Texas Tech	+10.0	Clemson	-11.0	
42.	Arizona	65.78	71.78	+6.0	92.	Temple	48.53	57.03	+8.5	USF	+10.0	Boston College	-11.0	
43.	Kentucky	69.63	71.63	+2.0	93.	Air Force	58.77	56.77	-2.0	North Texas	+10.0	Wisconsin	-10.0	
44.	Iowa State	75.52	71.52	-4.0	94.	Troy	57.01	56.51	-0.5	San Diego St	+10.0	Massachusetts	-10.0	
45.	Arizona State	79.83	70.83	-9.0	95.	Texas State	59.71	56.21	-3.5	Kennesaw State	+10.0	Colorado	-9.5	
46.	Houston	69.52	70.52	+1.0	96.	Western Michigan	49.34	55.34	+6.0	East Carolina	+9.0	Syracuse	-9.5	
47.	James Madison	64.56	70.06	+5.5	97.	Wyoming	54.83	55.33	+0.5	Southern Miss	+9.0	Florida	-9.0	
48.	Kansas	72.94	69.94	-3.0	98.	Oregon State	61.68	54.68	-7.0	Temple	+8.5	Arizona State	-9.0	
49.	North Texas	58.95	68.95	+10.0	99.	UL-Lafayette	60.15	54.65	-5.5	Utah	+7.5	Sam Houston St	-9.0	
50.	Nebraska	76.16	68.16	-8.0	100.	Louisiana Tech	52.37	54.37	+2.0					

## 2025 Week 12 College Football Power Ratings by Conference

[illegible]

## Week 12 Computer Projected Lines for Every CFB Game

For the past eight seasons we have posted computer projected lines for every game on Wednesday. Games where there was of difference of more than 3 points saw our computer lines actually beat the Vegas line at a 506-441-14 (53.4%) clip! Last week our computer went 0-2 and for the season now stands at 17-27-2. That's pretty solid and actually better than our own handicapping in some seasons. Keep in mind, these computer lines don't take into consideration off-the-field factors like revenge or flat spots or if there are late-week injuries. They are basically a power-rating number difference between the two teams that also takes into consideration the home field advantage.

Of the 43 games where our computer is off more than 3 points compared to the Vegas line (highlighted), our favorite team this week to back would be **Jacksonville State +3**.

The Comp column is the computer projected line and the Diff column is the difference between the Vegas line and the Computer line. "+" numbers in the difference column say back the underdog. "-" numbers in the difference

Wednesday, Nov 12th	Line	Comp	Diff	Saturday, Nov 15th	Line	Comp	Diff
305 Northern Illinois				361 Oregon State			
306 Massachusetts	+11.0	+11.7	-0.7	362 Tulsa	+2.5	+3.0	-0.5
307 Toledo				363 Texas State			
308 Miami, OH	+4.5	+2.9	+1.6	364 Southern Miss	-4.0	-6.0	-2.0
309 Buffalo				365 Central Florida			
310 Central Michigan	-2.0	-2.5	-0.5	366 Texas Tech	-23.5	-22.1	+1.4
Thursday, Nov 13th	Line	Comp	Diff	367 Kansas State			
313 Troy				368 Oklahoma State	+20.0	+20.7	-0.7
314 Old Dominion	-11.0	-10.4	+0.6	369 Utah			
Friday, Nov 14th	Line	Comp	Diff	370 Baylor	+8.5	+8.3	+0.2
315 Clemson				371 Florida			
316 Louisville	-3.0	-4.6	-1.6	372 Ole Miss	-15.0	-13.3	+1.7
317 Minnesota				373 Mississippi State			
318 Oregon	-25.0	-25.0	0.0	374 Missouri	-7.0	-6.8	+0.2
Saturday, Nov 15th	Line	Comp	Diff	375 Florida Atlantic			
319 Coastal Carolina				376 Tulane	-17.5	-17.7	-0.2
320 Georgia Southern	-2.5	-4.3	-1.8	377 South Carolina			
321 Air Force				378 Texas A&M	-19.0	-20.1	-1.1
322 Connecticut	-7.0	-7.2	-0.2	379 Arkansas			
323 UTSA				380 LSU	-5.5	-7.0	-1.5
324 Charlotte	+18.5	+17.3	+1.2	381 South Alabama			
325 Texas				382 UL-Monroe	+4.5	+6.4	-1.9
326 Georgia	-6.0	-7.7	-1.7	383 North Texas			
327 Appalachian State				384 UAB	+18.5	+16.5	+2.0
328 James Madison	-21.0	-20.3	+0.7	385 Maryland			
329 Arizona				386 Illinois	-14.5	-14.0	+0.5
330 Cincinnati	-6.5	-5.3	+1.2	387 Michigan			
331 Memphis				388 Northwestern	+11.5	+10.3	+1.2
332 East Carolina	-3.0	-1.1	+1.9	389 Kennesaw State			
333 Marshall				390 Jacksonville St	+3.0	-0.5	+3.5
334 Georgia State	+7.5	+5.5	+2.0	391 Colorado State			
335 South Florida				392 New Mexico	-14.5	-12.7	+1.8
336 Navy	+10.5	+10.1	+0.4	393 TCU			
337 Georgia Tech				394 BYU	-4.5	-2.7	+1.8
338 Boston College	+16.5	+14.8	+1.7	395 West Virginia			
339 Virginia				396 Arizona State	-11.0	-11.3	-0.3
340 Duke	-4.0	-6.3	-2.3	397 UTEP			
341 Virginia Tech				398 Missouri State	-4.5	-4.3	+0.2
342 Florida State	-13.5	-13.0	+0.5	399 Wyoming			
343 Wisconsin				400 Fresno State	-3.5	-4.4	-0.9
344 Indiana	-29.5	-29.3	+0.2	401 Iowa			
345 NC State				402 USC	-6.5	-6.7	-0.2
346 Miami, FL	-14.5	-18.1	-3.6	403 Purdue			
347 Penn State				404 Washington	-17.0	-16.4	+0.6
348 Michigan State	+7.5	+9.1	-1.6	405 Middle Tennessee			
349 UCLA				406 Western Kentucky	-13.5	-11.6	+1.9
350 Ohio State	-32.0	-31.2	+0.8	407 San Jose State			
351 Notre Dame				408 Nevada	+9.5	+10.4	-0.9
352 Pittsburgh	+12.5	+11.8	+0.7	409 New Mexico State			
353 North Carolina				410 Tennessee	-39.5	-40.6	-1.1
354 Wake Forest	-6.5	-5.8	+0.7	411 Liberty			
355 Eastern Michigan				412 FIU	+3.0	+2.6	+0.4
356 Ball State	+2.5	+3.8	-1.3	413 Utah State			
357 Oklahoma				414 UNLV	-6.0	-5.1	+0.9
358 Alabama	-6.0	-7.5	-1.5	415 Louisiana Tech			
359 Delaware				416 Washington State	-7.5	-9.2	-1.7
360 Sam Houston St	+9.5	+8.5	+1.0	417 Boise State			
				418 San Diego State	-3.0	+0.2	+3.2

## Betting CFB Openers

Every Sunday in Vegas at 11am PT, Circa Sports is one of the first books in the world to release CFB lines and we bet them every week. We think it's the best value bets we make all week. 2020 was the first season where we tracked every single bet we made and posted them in the weekly newsletters. We were very pleased with our 119-76-3 (61%) record on these Sunday bets with an average line value of 2.6 ppg! In 2021, we were 224-196-5 (53.3%) vs the Circa openers with an average line value of 1.8 ppg. In 2022, we were 314-262-14 (54.5%, CLV 417-122-51 +1.65 ppg). In 2023, we were 405-358-6 (53.4%, CLV 577-137-55 +2.09 ppg). So far this season we are 175-140-1 55.5% (CLV 230-59-27 +1.75 ppg) Below is some of what we bet already for Week 12 which includes bets we made in the summer for this week.

\$575 (302) Western Michigan +2.5 (Fan Duel)  
 \$575 (304) Akron -4.5 (Draft Kings)  
 \$550 (308) Miami, OH +3.5 (Fan Duel)  
 \$550 (310) Central Michigan -2.5 (ESPN Bet)  
 \$550 (317) Minnesota OVER 44.5 (Fan Duel)  
 \$590 (318) Oregon -20.5 (Fan Duel)  
 \$550 (320) Georgia Southern -1.5 (Fan Duel)  
 \$570 (321) Air Force +10.5 (Fan Duel)  
 \$575 (326) Georgia -5.5 (Fan Duel)  
 \$550 (333) Marshall -5.5 (Draft Kings)  
 \$550 (335) South Florida -8.5 (Fan Duel)  
 \$550 (338) Boston College +17.5 (Fan Duel)  
 \$550 (340) Duke UNDER 59.5 (ESPN Bet)  
 \$550 (348) Michigan State +8.5 (Fan Duel)  
 \$600 (357) Oklahoma +7.5 (ESPN Bet)  
 \$550 (359) Delaware -7 (Draft Kings)  
 \$550 (365) Central Florida +24.5 (Fan Duel)  
 \$550 (373) Miss State OVER 50.5 (Fan Duel)  
 \$550 (374) Missouri -5.5 (Fan Duel)  
 \$550 (380) LSU -4.5 (Fan Duel)  
 \$610 (390) Jacksonville State +3.5 (Fan Duel)  
 \$525 (392) New Mexico -12.5 (Fan Duel)  
 \$525 (395) West Virginia OVER 46.5 (Fan Duel)  
 \$610 (396) Arizona State -9.5 (Fan Duel)  
 \$625 (401) Iowa +7.5 (ESPN Bet)  
 \$550 (412) FIU +4 (Draft Kings)  
 \$550 (416) Washington State -3.5 (Draft Kings)

**Game of Year Bets we made in the summer (posted in the CFB Preview Guide):**

\$550 (370) Baylor +1.5 (Westgate)...YIKES!

**Versus Circa Sports Opening numbers:**

If you got in front of every 3-point or more move in the FBS vs FBS markets (sides and totals)...congrats you are 203-143-1 (58.7%) this year.

If you faded every 3-point or more move right before kickoff...congrats you are 178-161-8 (52.5%).

**Numbers matter!**



## Games in Rotation Order

### Thursday, November 13th

**NEW ENGLAND 27 N.Y. Jets 14.** Due to the weakest strength of schedule, we questioned the Patriots. They were playing a 10th straight week and traveling. Tampa was off a bye. Call us impressed. New England has now won 7 straight (6-1 ATS) and have a 2-game lead on Buffalo with an easy slate left. Coaching does make a difference. Meanwhile, the Jets got their 2nd win but it was a fluke as they got a 99-yard kick return TD and a 74-yard punt return TD. Early money is on New England. We lean UNDER.

### Sunday, November 16th

† **Miami 26 Washington 23.** @Santiago Bernabeu in Madrid, Spain. Just when you think Miami's season might be over, they pull you back in. Last week they avenged 7 straight losses to the Bills with a shocking 30-13 win as 8-point home underdogs. On the other side, Washington's season might actually be over. They've lost 5 straight and failed to cover in all 5. There's a bit of variance with the overseas games and the Dolphins have been "Jekyll and Hyde" the last month. Lean OVER.

**Green Bay 25 N.Y. GIANTS 19.** The Packers have been a huge disappointment since their 2-0 start. They are 1-5 ATS and 2-3-1 SU. They were favored in 5 of the games with the MNF game vs Philly being pick'em at close. Meanwhile, the Giants led the Bears 20-10 in the middle of the fourth quarter but lost last week. They correctly fired Brian Daboll. Mike Kafka is the interim and he could go with Jameis Winston here if Jaxson Dart doesn't clear concussion protocol. We've had a couple of Giants orders this week and we think they are the sharper side.

**BUFFALO 26 Tampa Bay 21.** Just when you thought the Bills had turned their season around, they lose 30-13 as 8-point favorites to the Dolphins. That's 3 upset losses for them now and a disappointing 2-5 ATS mark in their last 7. Speaking of disappointing... the Bucs fell at home to the Pats last week. They were off a bye and we thought in a good spot. Their next two games are at Buffalo here and at the Rams so the losses could start to mount. It might not matter considering their horrible division. We're passing.

**PITTSBURGH 28 Cincinnati 22.** Cincinnati upset Pittsburgh 33-31 as 5.5-point home underdogs back on October 16th. Now they're only 5.5-point road underdogs. The Bengals are off a bye after suffering two excruciating last second losses to the Jets and Bears. Meanwhile, Pittsburgh is off their worst performance of the season losing 25-10 on SNF to the Chargers. We expect them to bounce back. With Cincinnati's defense being historically bad, the OVER is on a 7-1 in their games.

**Houston 23 TENNESSEE 17.** Houston trailed Jacksonville 29-10 entering the fourth quarter last week. They had a backup QB in Davis Mills. Somehow, they outscored the Jags 26-0 and got the improbable win. They kept them in the playoff hunt. Mills could get the start again here. We'd rest Stroud again vs a 1-8 Tennessee team that's dead last in ypp, DVOA and Sagarin. Buffalo, Indy and KC are on deck for Houston. We're passing.

**MINNESOTA 27 Chicago 23.** We like Minnesota here. The Vikings are better in ypp margin (+0.0 vs -0.4) and have played the tougher schedule (No. 15 vs No.25). They rank higher in DVOA and Sagarin. We also like that they are off a loss where they had a 6.0-4.9 ypp edge vs the Ravens but were done in by turnovers. Meanwhile, the Bears had an improbable come-from-behind win vs the Giants (trailed by 10 in middle of the 4Q).

**ATLANTA 23 Carolina 19.** The Panthers are a very fraudulent 5-5 team and finally got exposed losing outright to the lowly Saints last week. Carolina ranks No. 29 in ypp margin (-0.9) despite playing the No. 27 toughest schedule. Meanwhile, the 3-6 Falcons are better than their record. They are +0.2 in ypp margin despite playing the No. 16 schedule. We'd be on Atlanta here if it weren't for them coming off an OT game in Germany last week.

## HOME TEAM IN CAPS

**L.A. Chargers 23 JACKSONVILLE 21.** The Chargers have bounced back from a mid-season swoon that saw them lose 3 of 4 games. Now they've won 3 straight and they had an impressive 25-10 over the Steelers on SNF. Somehow Jacksonville blew a 29-10 fourth quarter lead to a Houston team QB'd by Davis Mills. Will there be a hangover from that blown opportunity here? The Jags have played the tougher schedule (No. 7 vs No. 26).

**L.A. RAMS 26 Seattle 23.** These teams rank No. 1 and No. 2 in DVOA (advanced stat metric). The Seahawks are No. 1 in ypp margin at +1.7 but have only played the No. 24 schedule. The Rams are +1.0 in ypp margin but have played the No. 19 schedule. Both blew out division rivals last week. Both are 7-2 straight up and 7-2 ATS. As of right now, we don't see a ton of value. We would be interested in the Seahawks at "+3.5"

**San Francisco 25 ARIZONA 23.** Both teams suffered humbling losses to division rivals last week. With Carolina, Cleveland and Tennessee on deck, this is a chance for the 49ers to make a playoff push. They are really banged up though and playing an 11th straight week. Meanwhile, Arizona had a bye a couple weeks ago. These two played back in Week 3 with San Francisco winning 16-15 as a 1.5-point home favorite. We're not wild about laying the points here on the road. The Cardinals could be a solid teaser option.

**Baltimore 25 CLEVELAND 16.** The Ravens have won and covered three straight and are back in the driver's seat when it comes to the AFC North. The Browns are always in the backseat...maybe even the trunk when it comes to the division. They somehow lost to the Jets last week despite allowing only 169 yards. the Jets got a 99-yard kick return TD and a 74-yard punt return TD. Baltimore crushed Cleveland 41-17 as 12.5-point favorites in Week 2. We love them in a teaser.

**Kansas City 23 DENVER 19.** The Chiefs come in off a much-needed bye. They've already suffered four losses and are trailing by multiple games in the division. They have a chance to make up some ground here. The Broncos are 8-2 but have played a weak schedule (No. 29). Their defense has 46 sacks in 10 games, the most in NFL history. The problem is the offense only managed 10 points and 220 yards to the Raiders last week. That won't be good enough here. We lean UNDER.

**PHILADELPHIA 24 Detroit 21.** This is the best slate of late games in the NFL all season. You get a possible NFC playoff game here. The Eagles are starting to find themselves with three straight wins and covers. They are on a short week after beating Green Bay 10-7 on MNF. Meanwhile, the Lions moved to 13-0 ATS after a straight up loss. They averaged 8.0 yards per play and put up 546 yards avenging the loss to the Commanders in the playoffs last year. The Lions are better in the stats with a better ypp margin, DVOA rank and Sagarin rank. However, the Eagles are ascending and the early week money is on Philly as this game opened PHI -1.

### Monday, November 17th

**Dallas 27 LAS VEGAS 23.** The Cowboys come in off a bye. It's been a disappointment at 3-5-1 and off back-to-back losses. During the bye, DE Marshawn Kneeland took his own life and they will be playing with heavy hearts here. The Raiders do have extra time coming off a lousing 10-7 loss to the Broncos. They covered the spread but their offense managed just 188 yards and 3.2 yards per play. They'll need a heck of a lot more to keep pace with Dallas' offense.

## Byes: Indianapolis and New Orleans

### Week 11 Trends

	Favorites-Dogs
Straight Up	9-4
ATS	6-6-1
	Home-Away
Straight Up	8-5
ATS	6-7
	Totals (O/U)
Over-Under	7-7

### Season To-Date

	Favorites-Dogs
Straight Up	100-45-1 3 pick-em's
ATS	77-66-3
	Home-Away
Straight Up	79-63-1
ATS	70-71-2
	Totals (O/U)
Over-Under	79-67-3

# 2025 NFL Schedules with Logs

## Arizona (SU: 3-6, ATS: 5-4, O/U: 5-4)

Date	Opponent	Line	Score	ATS/O/U
9/7	at New Orleans	-5*	20-13 W	u44
9/14	Carolina	-7	27-22 L	o45
9/21	at San Francisco	+1*	15-16 W	u44
9/25	Seattle	+1	20-23 L	u44
10/5	Tennessee	-7*	21-22 L	o41
10/12	at Indianapolis	-8*	27-31 W	o46
10/19	Green Bay	+7	23-27 W	o44
10/26				
11/3	at Dallas	+3	27-17 W	u53
11/9	at Seattle	+7	22-44 L	o44
11/16	San Francisco			
11/23	Jacksonville			
11/30	at Tampa Bay			
12/7	L.A. Rams			
12/14	at Houston			
12/21	Atlanta			
12/28	at Cincinnati			
1/4	at L.A. Rams			

## Atlanta (SU: 3-5-1, ATS: 4-4-1, O/U: 3-5-1)

11/50 at Tampa Bay				
12/7 L.A. Rams				
12/14 at Houston				
12/21 Atlanta				
12/28 at Cincinnati				
1/4 L.A. Rams				
Atlanta (SU: 3-6, ATS: 4-4-1, O/U: 3-5-1)				
Date	Opponent	Line	Score	ATS/O/U
9/7 Tampa Bay	PK	20-23 L	u47	
9/14 at Minnesota	+3	22-6 W	u44	
9/21 at Carolina	-4*	0-30 L	u44	
9/28 Washington	-2*	34-27 W	o43	
10/5				
10/13 Buffalo	+3*	24-14 W	u49	
10/19 at San Francisco	-1	10-20 L	u47	
10/26 Miami	-7	10-34 L	p44	
11/2 at New England	+5*	23-24 W	o45	
11/9 † Indianapolis	-ot	+6	25-31 P	o48
11/16 Carolina				
11/23 at New Orleans				
11/30 at N.Y. Jets				
12/7 Seattle				
12/11 at Tampa Bay				
12/21 at Arizona				
12/29 L.A. Rams				
1/4 New Orleans				

## Baltimore (SU: 4-5, ATS: 4-5, O/U: 6-3)

Date	Opponent	Line	Score	ATS/O/U
9/7	at Buffalo	-1	40-41 L	o51
9/14	Cleveland	-12*	41-17 W	o46
9/22	Detroit	-4*	30-38 L	o54
9/28	at Kansas City	-2*	20-37 L	o48
10/5	Houston	+2*	10-44 L	o41
10/12	L.A. Rams	+7	3-17 L	u43
10/19				
10/26	Chicago	-2*	30-16 W	o45
10/30	at Miami	-7*	28-6 W	u51
11/9	at Minnesota	-4*	27-19 W	u49
11/16	at Cleveland			
11/23	N.Y. Jets			
11/27	Cincinnati			
12/7	Pittsburgh			
12/14	at Cincinnati			
12/21	New England			
12/28	at Green Bay			
1/4	at Pittsburgh			

## Buffalo (SU: 6-3, ATS: 4-5, O/U: 4-5)

Date	Opponent	Line	Score	ATS/O/U
9/7	Baltimore	+1	41-40 W	o51
9/14	at N.Y. Jets	-5*	30-10 W	u47
9/18	Miami	-11	31-21 L	o50
9/28	New Orleans	-14*	31-19 L	o49
10/5	New England	-7*	20-23 L	u48
10/13	at Atlanta	-3*	14-24 L	u49
10/19				
10/26	at Carolina	-7*	40-9 W	u48
11/2	Kansas City	+2*	28-21 W	o53
11/9	at Miami	-8	13-30 L	u50
11/16	Tampa Bay			
11/20	at Houston			
11/30	at Pittsburgh			
12/7	Cincinnati			
12/14	at New England			
12/21	at Cleveland			
12/28	Philadelphia			
1/4	N.Y. Jets			

## Carolina (SU: 5-5, ATS: 6-4, O/U: 5-5)

Date	Opponent	Line	Score	ATS/O/U
9/7	at Jacksonville	+4*	10-26 L	u45
9/14	at Arizona	+7	22-27 W	u45
9/21	at Atlanta	+4*	30-40 W	u44
9/28	at New England	+5*	13-42 L	o42
10/5	Miami	+1	27-24 W	o46
10/12	Dallas	+3	30-27 W	o44
10/19	at N.Y. Jets	-1	13-6 W	u40
10/26	Buffalo	+7	9-40 L	o48
11/2	at Green Bay	+13	16-13 W	u38
11/9	New Orleans	-5*	7-17 L	u43
11/16	at Atlanta			
11/24	at San Francisco			
11/30	L.A. Rams			
12/7				
12/14	at New Orleans			
12/21	Tampa Bay			
12/28	Seattle			
1/4	at Tampa Bay			

## Chicago (SU: 6-3, ATS: 5-4, O/U: 5-3-1)

Date	Opponent	Line	Score	ATS/O/U
9/8	Minnesota	PK	24-27 L	o43
9/14	at Detroit	+6*	21-52 L	o46
9/21	Dallas	+1	31-14 W	u50
9/28	at Las Vegas	+2	25-24 W	o47
10/5				
10/13	at Washington	+5*	25-24 W	p49
10/19	New Orleans	-3*	26-14 W	u43
10/26	at Baltimore	+2*	16-30 L	o45
11/2	at Cincinnati	-3	47-42 W	o51
11/9	N.Y. Giants	-4*	24-20 L	u44
11/16	at Minnesota			
11/23	Pittsburgh			
11/28	at Philadelphia			
12/7	at Green Bay			
12/14	Cleveland			
12/21	Green Bay			
12/28	at San Francisco			
1/4	at Detroit			

## Cincinnati (SU: 3-6, ATS: 3-6, O/U: 7-2)

Date	Opponent	Line	Score	ATS/O/U
9/7	at Cleveland	-4*	17-16 L	u48
9/14	at Jacksonville	-3*	31-27 W	o49
9/21	at Minnesota	-3*	10-48 L	o42
9/28	at Denver	-7*	3-28 L	u44
10/5	Detroit	+9*	24-37 L	u49
10/12	at Green Bay	+14	18-27 W	o44
10/16	Pittsburgh	+5*	33-31 W	o45
10/26	N.Y. Jets	-5*	38-39 L	u44
11/2	Chicago	+3	42-47 L	o51
11/16	at Pittsburgh			
11/23	New England			
11/27	at Baltimore			
12/7	at Buffalo			
12/14	at Baltimore			
12/21	at Miami			
12/28	at Arizona			
1/4	Cleveland			

## Cleveland (SU: 2-7, ATS: 3-6, O/U: 5-4)

Date	Opponent	Line	Score	ATS/O/U
9/7	Cincinnati	+4*	16-17 W	u48
9/14	at Baltimore	+12*	17-41 L	o48
9/21	Green Bay	+7*	13-10 W	u40
9/28	at Detroit	+10	10-34 L	u44
10/5	† Minnesota	+3*	17-21 L	o35
10/12	at Pittsburgh	+6*	9-23 L	u38
10/19	Miami	-2*	31-6 W	o34
10/26	at New England	+7	13-32 L	o40
11/2				
11/9	at N.Y. Jets	-2	20-27 L	o37
11/16	at Baltimore			
11/23	at Las Vegas			
11/30	San Francisco			
12/7	Tennessee			
12/14	at Chicago			
12/21	Buffalo			
12/28	Pittsburgh			
1/4	Tennessee			

## Dallas (SU: 3-5-1, ATS: 4-5, O/U: 6-3)

Date	Opponent	Line	Score	ATS/O/U
9/4	at Philadelphia	+8	20-24 W	u47
9/14	N.Y. Giants	-4*	40-37 L	u44
9/21	at Chicago	-1	14-31 L	u50
9/28	Green Bay	+6*	40-10 W	o48
10/5	at N.Y. Jets	+1*	37-32 W	u47
10/12	at Carolina	-3	27-30 L	o46
10/19	Washington	-1*	44-22 W	o55
10/26	at Denver	+4	24-44 L	o52
11/2	Arizona	-3	17-27 L	u51
11/9				
11/17	at Las Vegas			
11/23	Philadelphia			
11/27	Kansas City			
12/4	at Detroit			
12/14	Minnesota			
12/21	L.A. Chargers			
12/25	at Washington			
1/4	at Las Vegas			

## Denver (SU: 2-2, ATS: 4-5-1, O/U: 3-7)

Date	Opponent	Line	Score	ATS/O/U
9/7	Tennessee	-8*	20-12 L	u42
9/14	at Indianapolis	-1	28-29 L	o43
9/21	at L.A. Chargers	+3	20-23 P	u45
9/28	Cincinnati	-7	28-3 W	u44
10/5	at Philadelphia	+4	21-17 W	u44
10/12	N.Y. Jets	-7	13-11 L	u43
10/19	N.Y. Giants	-8*	33-32 L	u41
10/26	Dallas	-4	44-24 W	o52
11/2	at Houston	+2*	18-15 W	u41
11/6	Las Vegas	-8*	10-7 L	u42
11/16	Kansas City			
11/23				
11/30	at Washington			
12/7	at Las Vegas			
12/14	Green Bay			
12/21	Jacksonville			
12/25	at Kansas City			
1/4	at Las Vegas			

## Detroit (SU: 6-3, ATS: 6-3, O/U: 5-4)

Date	Opponent	Line	Score	ATS/O/U
9/7	at Green Bay	+1	13-27 L	u48
9/14	Chicago	-6*	52-21 W	o46
9/22	at Baltimore	+4*	38-30 W	o54
9/28	Cleveland	-10	34-10 W	u44
10/5	at Cincinnati	-9*	37-24 W	o49
10/12	at Kansas City	+2*	17-30 L	u51
10/20	Tampa Bay	-6	24-9 W	u47
10/26				
11/2	Minnesota	-9*	24-27 L	u44
11/9	at Washington	-8	44-22 W	o48
11/16	at Philadelphia			
11/23	N.Y. Giants			
11/27	Green Bay			
12/4	Dallas			
12/14	at L.A. Rams			
12/21	Pittsburgh			
12/25	at Minnesota			
1/4	at Chicago			

## Green Bay (SU: 5-3-1, ATS: 3-6, O/U: 4-5)

Date	Opponent	Line	Score	ATS/O
9/7	Detroit	-1	27-13 W	u
9/11	Washington	-3	27-18 W	u
9/21	at Cleveland	-7*	10-13 L	u
9/28	at Dallas	-6*	40-40 L	o
10/5				
10/12	Cincinnati	-14	27-18 L	o
10/19	at Arizona	-7	27-23 L	o
10/26	at Pittsburgh	-2*	35-25 W	o
11/2	Carolina	-13	13-16 L	u
11/10	Philadelphia	PK	7-10 L	u
11/16	at N.Y. Giants			
11/23	Minnesota			
11/27	at Detroit			
12/7	Chicago			
12/14	at Denver			
12/20	at Chicago			
12/28	Baltimore			
1/4	at Minnesota			

## Houston (SU: 4-5, ATS: 4-5, O/U: 3-5-1)

Date	Opponent	Line	Score	ATS/O
9/7	at L.A. Rams	+3	9-14 L	u
9/15	Tampa Bay	-2*	19-20 L	u
9/21	at Jacksonville	+1*	10-17 L	u
9/28	Tennessee	-7*	26-0 W	u
10/5	at Baltimore	-2*	44-10 W	o
10/12				
10/20	at Seattle	+3	19-27 L	p
10/26	San Francisco	-3	26-15 W	o
11/2	Denver	-2*	15-18 L	u
11/9	Jacksonville	-ot	-1	36-29 W
11/16	at Tennessee			
11/20	Buffalo			
11/30	at Indianapolis			
12/7	at Kansas City			
12/14	Arizona			
12/21	Las Vegas			
12/28	at L.A. Chargers			
1/4	Indianapolis			

## Indianapolis (SU: 8-2, ATS: 6-3-1, O/U: 6-4)

Date	Opponent	Line	Score	ATS/O/U
9/7	Miami	-1	33-8 W	u47
9/14	Denver	-1	29-28 W	u43
9/21	at Tennessee	-6*	41-20 W	o42
9/28	at L.A. Rams	+3*	20-27 L	u44
10/5	Las Vegas	-7	40-6 W	u46
10/12	Arizona	-8*	31-27 L	o46
10/19	at L.A. Chargers	+2*	38-24 W	o49
10/26	Tennessee	-15	38-14 W	u52
11/2	at Pittsburgh	-3	20-27 L	u47
11/9	† Atlanta	-6	31-25 P	o48
11/16				
11/23	at Kansas City			
11/30	Houston			
12/7	at Jacksonville			
12/14	at Seattle			
12/22	San Francisco			
12/28	Jacksonville			
1/4	at Houston			

## Jacksonville (SU: 5-4, ATS: 4-4-1, O/U: 5-4)



# 2025 CFB Schedules with Logs

## Air Force (SU: 3-6, ATS: 4-5, O/U: 6-3)

Date	Opponent	Line	Score	ATS/O/U
8/30	Bucknell	-32	49-13 W	o54'
9/6				
9/13	at Utah State	-4	30-49 L	o51'
9/20	Boise State	+10	37-49 L	o52
9/27	Hawaii	-6	35-44 L	o52
10/4	at Navy	+13	31-34 W	o51
10/11	at UNLV	+6	48-51 W	o65'
10/18	Wyoming	-3	24-21 L	u57
10/25				
11/1	Army	+1	17-20 L	u48
11/8	at San Jose State	+6	26-16 W	u68
11/15	at Connecticut			
11/22	New Mexico			
11/28	at Colorado State			

## Akron (SU: 4-6, ATS: 5-5, O/U: 6-4)

Date	Opponent	Line	Score	ATS/O/U
8/28	Wyoming	+5	0-10 L	u48
9/6	at Nebraska	+33	0-68 L	o47'
9/13	at UAB	+12	28-31 W	o58'
9/20	Duquesne	-10	51-7 W	o51
9/27	at Toledo	+21	3-45 L	u49
10/4	Central Michigan	+7	28-22 W	o47
10/11	Miami (OH)	+11	7-20 L	u47
10/18	at Ball State	-2	28-42 L	o44
10/25	at Buffalo	+10	24-16 W	u49
11/1				
11/4	Massachusetts	-12	44-10 W	o51'
11/11	Kent State			
11/18	at Bowling Green			
11/29				

## Alabama (SU: 8-1, ATS: 6-2-1, O/U: 4-4-1)

Date	Opponent	Line	Score	ATS/O/U
8/30	at Florida State	-13	17-31 L	o47'
9/6	UL-Monroe	-34	73-0 W	o49
9/13	Wisconsin	-18	38-14 W	o45'
9/20				
9/27	at Georgia	+2	24-21 W	u53'
10/4	Vanderbilt	-12	30-14 W	u57'
10/11	at Missouri	-3	27-24 P	p51
10/18	Tennessee	-9	37-20 W	u61
10/25	at South Carolina	-12	29-22 L	o48
11/1				
11/8	LSU	-10	20-9 W	u49'
11/15	Oklahoma			
11/22	Eastern Illinois			
11/29	at Auburn			

## Appalachian St (SU: 4-5, ATS: 4-5, O/U: 4-5)

Date	Opponent	Line	Score	ATS/O/U
8/29	† Charlotte	-3	34-11 W	u48'
9/6	Lindenwood	-31	20-13 L	u56'
9/13	at Southern Miss	-3	22-38 L	o55'
9/20				
9/27	at Boise State	+17	14-47 L	o59'
10/4	Oregon State	-2	27-23 W	u53'
10/11	at Georgia State	-3	41-20 W	o55'
10/18	Coastal Carolina	-10	37-45 L	o48'
10/25	at Old Dominion	+13	21-24 W	u62
11/1				
11/6	Georgia Southern	-5	23-25 L	u61'
11/15	at James Madison			
11/22	Marshall			
11/29	Arkansas State			

## Arizona (SU: 6-3, ATS: 5-4, O/U: 4-5)

Date	Opponent	Line	Score	ATS/O/U
8/30	Hawaii	-15	40-6 W	u55
9/6	Weber State	-32	48-3 W	u56'
9/12	Kansas State	+1	23-17 W	u56'
9/20				
9/27	at Iowa State	+4	14-39 L	o48
10/4	Oklahoma State	-21	41-13 W	u57
10/11	BYU-2ot	+2	27-33 L	o46
10/18	at Houston	-2	28-31 L	o47'
10/25				
11/1	at Colorado	-3	52-17 W	o52'
11/8	Kansas	-6	24-20 L	u56
11/15	at Cincinnati			
11/22	Baylor			
11/28	at Arizona State			

## Arizona State (SU: 6-3, ATS: 5-4, O/U: 2-7)

Date	Opponent	Line	Score	ATS/O/U
8/30	Northern Arizona	-30	38-19 L	o52'
9/6	at Mississippi St	-6	20-24 L	u59
9/13	Texas State	-18	34-15 W	u61
9/20	at Baylor	+2	27-24 W	u60'
9/26	TCU	-2	27-24 W	u54'
10/4				
10/11	at Utah	+9	10-42 L	o42'
10/18	Texas Tech	+7	26-22 W	u52'
10/25	Houston	-7	16-24 L	u46'
11/1	at Iowa State	+7	24-19 W	u48'
11/8				
11/15	West Virginia			
11/22	at Colorado			
11/28	Arizona			

## Arkansas (SU: 2-7, ATS: 3-6, O/U: 7-2)

Date	Opponent	Line	Score	ATS/O/U
8/30	Alabama A&M	-48	52-7 L	u64'
9/6	Arkansas State	-23	56-14 W	o62
9/13	at Ole Miss	+3	35-41 L	o60'
9/20	at Memphis	-7	31-32 L	o59'
9/27	Notre Dame	+5	13-56 L	o63'
10/4				
10/11	at Tennessee	+10	31-34 W	u68'
10/18	Texas A&M	+7	42-45 W	o57'
10/25	Auburn	-2	24-33 L	o55'
11/1	Mississippi St	-5	35-38 L	o66'
11/8				
11/15	at LSU			
11/22	at Texas			
11/29	Missouri			

## Arkansas State (SU: 5-5, ATS: 7-3, O/U: 2-8)

Date	Opponent	Line	Score	ATS/O/U
8/30	SE Missouri St	-14	42-24 W	o60
9/6	at Arkansas	+23	14-56 L	o62
9/13	Iowa State	+21	16-24 L	u56
9/20	at Kennesaw St	-4	21-28 L	u57
9/27	at UL-Monroe	+1	16-28 L	u55
10/4	Texas State	+14	31-30 W	u44
10/11				
10/14	at South Alabama	+9	15-14 W	u57
10/25	Georgia Southern	+1	34-24 W	u59'
11/1	at Troy	+7	23-10 W	u52'
11/8	Southern Miss	+6	21-27 W	u54'
11/15				
11/20	UL-Lafayette			
11/29	at Appalachian State			

## Army (SU: 5-4, ATS: 4-5, O/U: 2-7)

Date	Opponent	Line	Score	ATS/O/U
8/29	Tarleton St-2ot	-14	27-30 L	o47
9/6	at Kansas State	+17	24-21 W	u48
9/13				
9/20	North Texas-ot	+2	38-45 L	o50
9/25	at East Carolina	+3	6-28 L	u53'
10/4	at UAB	-6	31-13 W	u56
10/11	Charlotte	-17	24-7 L	u45
10/18	at Tulane	+10	17-24 W	u44
10/25				
11/1	at Air Force	-1	20-17 W	u48
11/8	Temple	-7	14-13 L	u45'
11/15				
11/22	Tulsa			
11/28	at UTSA			
12/6				
12/13	† Navy			

## Auburn (SU: 4-6, ATS: 3-7, O/U: 3-7)

Date	Opponent	Line	Score	ATS/O/U
8/29	at Baylor	-1	38-24 W	o57
9/6	Ball State	-42	42-3 L	u52
9/13	South Alabama	-26	31-15 L	u56'
9/20	at Oklahoma	+6	17-24 L	u47
9/27	at Texas A&M	+6	10-16 W	u51'
10/4				
10/11	Georgia	+4	10-20 L	u46'
10/18	Missouri-2ot	+1	17-23 L	u43'
10/25	at Arkansas	+2	33-24 W	o55'
11/1	Kentucky	-12	3-10 L	u44'
11/8	at Vanderbilt-ot	+6	38-45 L	o47
11/15				
11/22	Mercer			
11/29	Alabama			

## Ball State (SU: 4-5, ATS: 6-3, O/U: 3-6)

Date	Opponent	Line	Score	ATS/O/U
8/30	at Purdue	+16	0-31 L	u48'
9/6	at Auburn	+42	3-42 W	u52
9/13	New Hampshire	-3	34-29 W	o46
9/20	at Connecticut	+21	25-31 W	o52'
9/27				
10/4	Ohio	+14	20-14 W	u52
10/11	at Western Mich	+9	0-42 L	u43
10/18	Akron	+2	42-28 W	o44
10/25	at No. Illinois	+6	7-21 L	u42
11/1				
11/5	Kent State	-3	17-13 W	u49
11/15	Eastern Michigan			
11/22	at Toledo			
11/29	at Miami (OH)			

## Baylor (SU: 5-4, ATS: 2-7, O/U: 5-4)

Date	Opponent	Line	Score	ATS/O/U
8/29	Auburn	+1	24-38 L	o57
9/6	at SMU-2ot	+3	48-45 W	o65'
9/13	Samford	-51	42-7 L	u64'
9/20	Arizona State	-2	24-27 L	u58'
9/27	at Oklahoma St	-21	45-27 L	o58'
10/4	Kansas State	-4	35-34 L	o60'
10/11				
10/18	at TCU	+3	36-42 L	o66'
10/25	at Cincinnati	+3	20-41 L	u68'
11/1	UCF	-3	30-3 W	u58
11/8				
11/15	Utah			
11/22	at Arizona			
11/29	Houston			

## Boise State (SU: 6-3, ATS: 6-2-1, O/U: 5-4)

Date	Opponent	Line	Score	ATS/O/U
8/28	at USF	-4	7-34 L	u61
9/5	East Washington	-33	51-14 W	o60'
9/13				
9/20	at Air Force	-10	49-37 W	o52
9/27	Appalachian St	-17	47-14 W	o59'
10/4	at Notre Dame	+21	7-28 W	u62'
10/11	New Mexico	-14	41-25 W	o58'
10/18	UNLV	-13	56-31 W	o60
10/24	at Nevada	-21	24-3 P	u51
11/1	Fresno State	-17	7-30 L	u48
11/8				
11/15	at San Diego State			
11/22	Colorado State			
11/28	at Utah State			

## Boston College (SU: 1-9, ATS: 4-6, O/U: 7-3)

Date	Opponent	Line	Score	ATS/O/U
8/30	Fordham	-35	66-10 W	o53'
9/6	at Mich St-2ot	+3	40-42 L	o45'
9/13	at Stanford	-14	20-30 L	o45
9/20				
9/27	California	-6	24-28 L	u54
10/4	at Pittsburgh	+7	7-48 L	u54'
10/11	Clemson	+14	10-41 L	u54'
10/18	Connecticut	+2	23-38 L	o58
10/25	at Louisville	+25	24-38 W	u54
11/1	Notre Dame	+31	10-25 W	u55'
11/8	SMU	+10	13-45 L	o54'
11/15	Georgia Tech			
11/22				
11/29	at Syracuse			

## Bowling Green (SU: 3-7, ATS: 4-6, O/U: 4-6)

Date	Opponent	Line	Score	ATS/O/U
8/28	Lafayette	-21	26-7 L	u53'
9/6	at Cincinnati	+22	20-34 W	o46'
9/13	Liberty	+6	23-13 W	u56
9/20	at Louisville	+26	17-40 W	o51
9/27	at Ohio	+7	20-35 L	o50
10/4				
10/11	Toledo	+11	28-23 W	o45'
10/18	Central Michigan	-3	6-27 L	u44
10/25	at Kent State	-7	21-24 L	u48
11/1	Buffalo	-2	3-28 L	u44
11/8	at Eastern Mich	+3	21-27 L	u49
11/15				
11/18	Akron			
11/25	at Massachusetts			

## Buffalo (SU: 5-4, ATS: 3-5-1, O/U: 4-5)

Date	Opponent	Line	Score	ATS/O/U
8/28	at Minnesota	+16	10-23 W	u42'
9/6	at Saint Francis	-38	45-6 W	o48'
9/13	at Kent State	-24	31-28 L	u46'
9/20	Troy	-5	17-21 L	u51
9/27	Connecticut	+3	17-20 P	u51
10/4	Eastern Mich-ot	-9	31-30 L	o53'
10/11				
10/18	at Massachusetts	-16	28-21 L	o47'
10/25	Akron	-10	16-24 L	u49
11/1	at Bowling Green	+2	28-3 W	u44
11/8				
11/12	at Central Michigan			
11/19	Miami (OH)			
11/28	Ohio			

## BYU (SU: 8-1, ATS: 6-3, O/U: 4-5)

Date	Opponent	Line	Score	ATS/O/U
8/30	Portland State	-43	69-0 W	o62'
9/6	Stanford	-20	27-3 W	u44
9/13				
9/20	at East Carolina	-6	34-13 W	u50
9/27	at Colorado	-6	24-21 L	u48

**Georgia (SU: 8-1, ATS: 4-5, O/U: 4-4-1)**

Date	Opponent	Line	Score	ATS/O/U
8/30	Marshall	-38'	45-7 L	o51'
9/6	Austin Peay	-46'	28-6 L	u56'
9/13	at Tennessee-ot	-3'	44-41 L	o50'
9/27	Alabama	-2'	21-24 L	u53'
10/4	Kentucky	-20'	35-14 W	p49
10/11	at Auburn	-40'	20-10 W	u46'
10/18	Ole Miss	-7'	43-35 W	o56'
10/25				
11/1	† Florida	-7	24-20 L	u50'
11/8	at Mississippi St	-9'	41-21 W	o56
11/15	Texas			
11/22	Charlotte			
11/28	† Georgia Tech			

**Georgia Southern (SU: 4-5, ATS: 4-4-1, O/U: 6-3)**

Date	Opponent	Line	Score	ATS/O/U
8/30	at Fresno State	+1	14-42 L	o49'
9/6	at USC	+29	20-59 L	o62
9/13	Jacksonville St	-3	41-34 W	o58'
9/20	Maine	-23	45-17 W	o57'
9/27	at James Madison	+15	10-35 L	u54'
10/4				
10/9	Southern Miss	+3	35-38 P	o60
10/18	Georgia State	-6'	41-24 W	o59
10/25	at Arkansas State-1		24-34 L	u59'
11/1				
11/6	at Appalachian St	+5	25-23 W	u61'
11/15	Coastal Carolina			
11/22	Old Dominion			
11/29	at Marshall			

**Georgia State (SU: 1-8, ATS: 1-8, O/U: 6-3)**

Date	Opponent	Line	Score	ATS/O/U
8/30	at Ole Miss	+33'	7-63 L	o60'
9/6	Memphis	+14'	16-38 L	u57'
9/13	Murray State	-32	37-21 L	u63'
9/20	at Vanderbilt	+28	21-70 L	o53
9/27				
10/4	James Madison	+20	7-14 W	u52'
10/11	Appalachian St	+3	20-41 L	o55'
10/18	at Ga Southern	+6'	24-41 L	o59
10/23	South Alabama	+6	31-38 L	o54
11/1				
11/8	at Coa. Carolina	+7'	27-40 L	o56'
11/15	Marshall			
11/22	at Troy			
11/29	at Old Dominion			

**Georgia Tech (SU: 8-1, ATS: 6-3, O/U: 5-4)**

Date	Opponent	Line	Score	ATS/O/U
8/29	at Colorado	-3'	27-20 W	u50
9/6	Gardner-Webb	-37'	59-12 W	o60
9/13	Clemson	+3	24-21 W	u50'
9/20	Temple	-24'	45-24 L	o53
9/27	at Wake Forest-ot	-13	30-29 L	o53
10/4				
10/11	Virginia Tech	-14	35-20 W	u55'
10/18	at Duke	+3'	27-18 W	u61
10/25	Syracuse	-17	41-16 W	o52'
11/1	at NC State	-4'	36-48 L	o59
11/8				
11/15	at Boston College			
11/22	Pittsburgh			
11/28	† Georgia			

**Hawaii (SU: 7-3, ATS: 7-3, O/U: 4-6)**

Date	Opponent	Line	Score	ATS/O/U
8/23	Stanford	-2'	23-20 W	u50
8/30	at Arizona	+15'	6-40 L	u55
9/6	Sam Houston St	-7	37-20 W	u48'
9/13	Portland State	-36	23-3 L	u54'
9/20	Fresno State	+2'	21-23 W	u47'
9/27	at Air Force	+6'	44-35 W	o52
10/4				
10/11	Utah State	+1'	44-26 W	o56'
10/18	at Colorado State	+2'	31-19 W	u54
10/25				
11/1	at San Jose State	+2'	38-45 L	o55'
11/8	San Diego State	+6'	38-6 W	u47'
11/15				
11/21	at UNLV			
11/29	Wyoming			

**Houston (SU: 8-2, ATS: 7-3, O/U: 7-3)**

Date	Opponent	Line	Score	ATS/O/U
8/28	Steph. F. Austin	-24	27-0 W	u54'
9/6	at Rice	-13'	35-9 W	o38'
9/12	Colorado	-4	36-20 W	o45'
9/20				
9/27	at Oregon St-ot	-12	27-24 L	o48
10/4	Texas Tech	+13	11-35 L	u51'
10/11	at Oklahoma St	-14'	39-17 W	o47'
10/18	Arizona	+2	31-28 W	o47'
10/25	at Arizona State	+7'	24-16 W	u46'
11/1	West Virginia	-13'	35-45 L	o48'
11/7	at UCF	+1	30-27 W	o47'
11/15				
11/22	TCU			
11/29	at Baylor			

**Illinois (SU: 6-3, ATS: 6-3, O/U: 5-4)**

Date	Opponent	Line	Score	ATS/O/U
8/29	Western Illinois	-48'	52-3 W	u62'
9/6	at Duke	-2'	45-19 W	o49
9/13	Western Mich	-27'	38-0 W	u50'
9/20	at Indiana	+7	10-63 L	o51'
9/27	USC	+6'	34-32 W	o61'
10/4	at Purdue	-7	43-27 W	o54'
10/11	Ohio State	+14'	16-34 L	u51'
10/18				
10/25	at Washington	+3	25-42 L	o54'
11/1	Rutgers	-13	35-13 W	u62'
11/8				
11/15	Maryland			
11/22	at Wisconsin			
11/29	Northwestern			

**Indiana (SU: 10-0, ATS: 6-4, O/U: 6-3-1)**

Date	Opponent	Line	Score	ATS/O/U
8/30	Old Dominion	-23'	27-14 L	u53'
9/6	Kennesaw State	-35'	56-9 W	o51'
9/12	Indiana State	-47	73-0 W	o60'
9/20	Illinois	-7	63-10 W	o51'
9/27	at Iowa	-9	20-15 L	u47'
10/4				
10/11	at Oregon	+7	30-20 W	u51
10/18	Michigan State	-26	38-13 L	u49
10/25	UCLA	-26'	56-6 W	o53
11/1	at Maryland	-21'	55-10 W	o50'
11/8	at Penn State	-13'	27-24 L	p51
11/15	Wisconsin			
11/22				
11/28	at Purdue			

**Iowa (SU: 6-3, ATS: 6-2-1, O/U: 4-5)**

Date	Opponent	Line	Score	ATS/O/U
8/30	Albany	-39'	34-7 L	u48'
9/6	at Iowa State	+3	13-16 P	u45
9/13	Massachusetts	-35	47-7 W	o43
9/19	at Rutgers	-2	38-28 W	o46'
9/27	Indiana	+9	15-20 W	u47'
10/4				
10/11	at Wisconsin	-5'	37-0 W	u37'
10/18	Penn State	-3	25-24 L	o41'
10/25	Minnesota	-7'	41-3 W	o39
11/1				
11/8	Oregon	+4'	16-18 W	u41'
11/15	at USC			
11/22	Michigan State			
11/28	at Nebraska			

**Iowa State (SU: 6-4, ATS: 4-5-1, O/U: 4-6)**

Date	Opponent	Line	Score	ATS/O/U
8/23	† Kansas State	+3	24-21 W	u51'
8/30	South Dakota	-16	55-7 W	o47'
9/6	Iowa	-3	16-13 P	u43
9/13	at Arkansas State	-21	24-16 L	u56
9/20				
9/27	Arizona	-4	39-14 W	o48
10/4	at Cincinnati	+1	30-38 L	u55'
10/11	at Colorado	-3	17-24 L	o52'
10/18				
10/25	BYU	-2'	27-41 L	o49
11/1	Arizona State	-7'	19-24 L	u48'
11/8	at TCU	+7'	20-17 W	u58
11/15				
11/22	Kansas			
11/29	at Oklahoma State			

**Jacksonville State (SU: 6-3, ATS: 4-5, O/U: 6-3)**

Date	Opponent	Line	Score	ATS/O/U
8/28	at UCF	+20'	10-17 W	u53
9/6	Liberty	+6	34-24 W	o50'
9/13	at Ga Southern	+3	34-41 L	o58'
9/20	Murray State	-35'	45-10 L	u60'
9/27	at Southern Miss	+4	25-42 L	o55'
10/4				
10/9	at Sam Hou St	-7	29-27 L	o53'
10/15	Delaware	+3	38-25 W	o56'
10/25				
10/29	at Middle Tenn	-4	24-21 L	u54'
11/8	at UTEP	-1	30-27 W	o47
11/15	Kennesaw State			
11/22	at FIU			
11/29	Western Kentucky			

**James Madison (SU: 8-1, ATS: 6-3, O/U: 3-6)**

Date	Opponent	Line	Score	ATS/O/U
8/30	Weber State	-26'	45-10 W	u55'
9/6	at Louisville	+15'	14-28 W	u56'
9/13				
9/20	at Liberty	-7'	31-13 W	u46'
9/27	Georgia Southern	-15	35-10 W	u54'
10/4	at Georgia State	-20	14-7 L	u52'
10/11	UL-Lafayette	-18'	24-14 L	u45
10/18	Old Dominion	-3	63-27 W	o47'
10/25				
10/28	at Texas State	-7	52-20 W	o55'
11/8	at Marshall	-13'	35-23 L	o53'
11/15	Appalachian State			
11/22	Washington State			
11/29	at Coastal Carolina			

**Kansas (SU: 5-5, ATS: 4-6, O/U: 5-5)**

Date	Opponent	Line	Score	ATS/O/U
8/23	Fresno State	-14	31-7 W	u50
8/29	Wagner	-45'	46-7 L	u57
9/6	at Missouri	+5'	31-42 L	o51
9/13				
9/20	West Virginia	-12'	41-10 W	u54'
9/27	Cincinnati	-5'	34-37 L	u56'
10/4	at UCF	-4	27-20 W	u54
10/11	at Texas Tech	+13'	17-42 L	o58'
10/18				
10/25	Kansas State	-3'	17-42 L	o55'
11/1	Oklahoma State	-24'	38-21 L	o55
11/8	at Arizona	+6	20-24 W	u56
11/15				
11/22	at Iowa State			
11/28	Utah			

**Kansas State (SU: 4-5, ATS: 4-5, O/U: 6-3)**

Date	Opponent	Line	Score	ATS/O/U
8/23	† Iowa State	-3	21-24 L	u51'
8/30	North Dakota	-27'	38-35 L	o55'
9/6	Army	-17	21-24 L	u48
9/12	at Arizona	-1'	17-23 L	u56'
9/20				
9/27	UCF	-6	34-20 W	o49
10/4	at Baylor	+4'	34-35 W	o60'
10/11	TCU	+3	41-28 W	o55
10/18				
10/25	at Kansas	+3'	42-17 W	o55'
11/1	Texas Tech	+7	20-43 L	o51'
11/8				
11/15	at Oklahoma State			
11/22	at Utah			
11/29	Colorado			

**Kennesaw State (SU: 7-2, ATS: 6-3, O/U: 3-6)**

Date	Opponent	Line	Score	ATS/O/U
8/29	at Wake Forest	+18'	9-10 W	u51'
9/6	at Indiana	+35'	9-56 L	o51'
9/13	Merrimack	-17'	27-13 L	u44'
9/20	Arkansas State	+4'	28-21 W	u57'
9/27	Middle Tennessee	-6'	24-16 W	u53'
10/4				
10/9	Louisiana Tech	+4'	35-7 W	u47
10/18				
10/21	at FIU	-3	45-26 W	o49
10/28	UTEP	-12	33-20 W	o52'
11/8	at New Mexico St	-11'	24-21 L	u52'
11/15	at Jacksonville State			
11/22	Jacksonville State			
11/29	at Liberty			

**Kent State (SU: 3-6, ATS: 4-5, O/U: 4-5)**

Date	Opponent	Line	Score	ATS/O/U
8/30	Merrimack	-5	21-17 L	u50'
9/6	at Texas Tech	+47'	14-62 L	o60
9/13	Buffalo	+24	28-31 W	u45
9/20	at Florida State	+45	10-66 L	o56
9/27				
10/4	at Oklahoma	+46'	0-44 L	u53'
10/11	Massachusetts	-1	42-6 W	u50'
10/18	at Toledo	+25'	10-45 L	o48
10/25	Bowling Green	+7'	24-21 W	u48
11/1				
11/5	at Ball State	+3	13-17 L	u49
11/11	at Akron			
11/19	Central Michigan			
11/28	at Northern Illinois			

**Kentucky (SU: 4-5, ATS: 4-5, O/U: 5-3-1)**

Date	Opponent	Line	Score	ATS/O/U
8/30	Toledo	-10	24-16 L	u50'
9/6	Ole Miss	-8	23-30 W	o51
9/13	Eastern Michigan	-26'	48-23 L	o49'
9/20				
9/27	at South Carolina	+5'	13-35 L	o47
10/4	at Georgia	+20'	14-35 L	p49
10/11				
10/18	Texas-ot	+12	13-16 W	u55
10/25	Tennessee	+7'	34-56 L	o45'
11/1	at Auburn	+12	10-3 W	u44'
11/8	Florida	+4'	38-7 W	o44'
11/15	Tennessee Tech			
11/22	at Vanderbilt			
11/29	at Louisville			

**Liberty (SU: 4-5, ATS: 3-6, O/U: 3-6)**

Date	Opponent	Line	Score	ATS/O/U
8/30	Maine	-25'	28-7 L	u51'
9/6	at Jacksonville St	-6	24-34 L	o50'
9/13	at Bowling Green	-6	13-23 L	u51'
9/20	James Madison	+7'	13-31 L	u46'
9/27	at Old Dominion	+14'	7-21 W	u53'
10/4				
10/8	at UTEP	-2	19-8 W	u46'
10/14	New Mexico St	-11'	30-27 L	o48'
10/25				
11/1	Delaware	-3'	59-30 W	o52'
11/8	Missouri State	-7'	17-21 L	u51'
11/15	at FIU			
11/22	at Louisiana Tech			
11/29	Kennesaw State			



### NC State (SU: 5-4, ATS: 4-5, O/U: 6-3)

Date	Opponent	Line Score	ATS/O/U
8/28	East Carolina	-13' 24-17 L	u61'
9/6	Virginia	-3 35-31 W	o53'
9/11	at Wake Forest	-7 34-24 W	o52'
9/20	at Duke	+3 33-45 L	o56'
9/27	Virginia Tech	-10 21-23 L	u57'
10/4	Campbell	-42' 56-10 W	o61'
10/11	at Notre Dame	+24 7-36 L	u59'
10/18			
10/25	at Pittsburgh	+5 34-53 L	o53'
11/1	Georgia Tech	+4' 48-36 W	o59'
11/8			
11/15	at Miami (FL)		
11/21	Florida State		
11/29	North Carolina		

### Nevada (SU: 7-3, ATS: 4-5-1, O/U: 7-3)

Date	Opponent	Line Score	ATS/O/U
8/28	† Cincinnati	-6 20-17 L	u50'
9/6	Akron	-33' 68-0 W	o47'
9/11	Hou. Christian	-48' 59-7 W	o59'
9/20	Michigan	+1 27-30 L	o48'
9/27			
10/4	Michigan State	-12' 38-27 L	o48'
10/11	at Maryland	-7 34-31 L	o47'
10/17	at Minnesota	-6' 6-24 L	u47'
10/25	Northwestern	-7 28-21 P	o44'
11/1	USC	+4' 17-21 W	u59'
11/8	at UCLA	+1' 28-21 W	o46'
11/15			
11/22	at Penn State		
11/29	Iowa		

### Nevada (SU: 1-8, ATS: 3-5-1, O/U: 3-6)

Date	Opponent	Line Score	ATS/O/U
8/30	at Penn State	+42' 11-46 W	o54'
9/6	Sacramento St	-7 20-17 L	u55'
9/11	Middle Tennessee	-9 13-14 L	u49'
9/20	at W. Kentucky	+7' 16-31 L	u54'
9/27			
10/4	at Fresno State	+11' 17-20 W	u45'
10/11	San Diego State	+6' 10-44 L	o42'
10/18	at New Mexico	+13' 22-24 W	u49'
10/24	Boise State	+21 3-24 P	u51'
11/1			
11/8	at Utah State	+10 14-51 L	o52'
11/15	San Jose State		
11/22	at Wyoming		
11/29	UNLV		

### New Mexico (SU: 6-3, ATS: 5-4, O/U: 5-4)

Date	Opponent	Line Score	ATS/O/U
8/30	at Michigan	+34' 17-34 W	o49'
9/6	Idaho State	-18' 32-22 L	u60'
9/12	at UCLA	+15' 35-10 W	u53'
9/20			
9/27	New Mexico St	-16' 38-20 W	o58'
10/3	at San Jose State	+1' 28-35 L	o53'
10/11	at Boise State	+14' 25-41 L	o58'
10/18	Nevada	-13' 24-22 L	u49'
10/25	Utah State	-3 33-14 W	u61'
11/1	at UNLV	+4 40-35 W	o61'
11/8			
11/15	Colorado State		
11/22	at Air Force		
11/28	San Diego State		

### New Mexico State (SU: 3-6, ATS: 4-5, O/U: 3-6)

Date	Opponent	Line Score	ATS/O/U
8/30	Bryant	-19' 19-3 L	u53'
9/6	Tulsa	+3 21-14 W	u52'
9/11	at Louisiana Tech	+10 14-49 L	o42'
9/20			
9/27	at New Mexico	+16' 20-38 L	o53'
10/2	Sam Houston St	+1' 37-10 W	u52'
10/11			
10/14	at Liberty	+11' 27-30 W	o48'
10/22	Missouri State-ot+2'	17-24 L	u51'
11/1	at W. Kentucky	+7' 16-35 L	u53'
11/8	Kennesaw State	+11' 21-24 W	u52'
11/15	at Tennessee		
11/22	at UTEP		
11/29	Middle Tennessee		

### North Carolina (SU: 4-5, ATS: 5-4, O/U: 2-7)

Date	Opponent	Line Score	ATS/O/U
9/1	TCU	+3' 14-48 L	o55'
9/6	at Charlotte	-14' 20-3 W	u49'
9/11	Richmond	-24' 41-6 W	u47'
9/20	at UCF	+7 9-34 L	u46'
9/27			
10/4	Clemson	+15' 10-38 L	o47'
10/11			
10/17	at California	+7' 18-21 W	u46'
10/25	Virginia-ot	+11' 16-17 W	u51'
10/31	at Syracuse	+1 27-10 W	u45'
11/8	Stanford	-7' 20-15 L	u41'
11/15	at Wake Forest		
11/22	Duke		
11/29	at NC State		

### North Texas (SU: 8-1, ATS: 7-2, O/U: 6-3)

Date	Opponent	Line Score	ATS/O/U
8/30	Lamar	-27' 51-0 W	u63'
9/6	at West Mich-ot	-11' 33-30 L	o56'
9/11	Washington St	-7 59-10 W	o57'
9/20	at Army-ot	-2' 45-38 W	o50'
9/27	South Alabama	-13 36-22 W	u63'
10/4			
10/10	USF	-2' 36-63 L	o68'
10/18	UTSA	-4 55-17 W	o64'
10/24	at Charlotte	-25' 54-20 W	o60'
11/1	Navy	-6' 31-17 W	u68'
11/8			
11/15	at UAB		
11/22	at Rice		
11/28	Temple		

### Northern Illinois (SU: 2-7, ATS: 2-7, O/U: 3-6)

Date	Opponent	Line Score	ATS/O/U
8/30	Holy Cross	-13' 19-17 L	u49'
9/5	at Maryland	+16' 9-13 W	u45'
9/13			
9/20	at Mississippi St	+24 10-38 L	u48'
9/27	San Diego State	+2' 3-6 L	u41'
10/4	Miami (OH)	+4' 14-25 L	o38'
10/11	at Eastern Mich	-1' 10-16 L	u48'
10/18	at Ohio	+10' 21-48 L	o42'
10/25	Ball State	-6' 21-7 W	u40'
11/1			
11/5	at Toledo	+16 3-42 L	o42'
11/12	at Massachusetts		
11/18	Western Michigan		
11/28	Kent State		

### Northwestern (SU: 5-4, ATS: 5-3-1, O/U: 4-5)

Date	Opponent	Line Score	ATS/O/U
8/30	at Tulane	+6 3-23 L	u45'
9/5	Western Illinois	-31' 42-7 W	o48'
9/11	Oregon	+24' 14-34 W	u50'
9/20			
9/27	UCLA	-6 17-14 L	u46'
10/4	UL-Monroe	-13 42-7 W	o43'
10/11	at Penn State	+20' 22-21 W	u46'
10/18	Purdue	-3 19-0 W	u47'
10/25	at Nebraska	+7 21-28 P	o60'
11/1			
11/7	at USC	+14 17-38 L	o54'
11/15	Michigan		
11/22	Minnesota		
11/29	at Illinois		

### Notre Dame (SU: 7-2, ATS: 4-5, O/U: 5-4)

Date	Opponent	Line Score	ATS/O/U
8/31	at Miami (FL)	-3 24-27 L	o50'
9/6			
9/13	Texas A&M	-6' 40-41 L	o49'
9/20	Purdue	-24' 56-30 W	o51'
9/27	at Arkansas	-5' 56-13 W	o63'
10/4	Boise State	-21' 28-7 L	u62'
10/11	NC State	-24 36-7 W	u59'
10/18	USC	-10' 34-24 L	u60'
10/25			
11/1	at Boston College	-31 25-10 L	u55'
11/8	Navy	-31 49-10 W	o54'
11/15	at Pittsburgh		
11/22	Syracuse		
11/29	at Stanford		

### Ohio State (SU: 6-3, ATS: 5-3-1, O/U: 4-5)

Date	Opponent	Line Score	ATS/O/U
8/28	at Rutgers	+15' 31-34 W	o52'
9/6	West Virginia	+3' 17-10 W	u58'
9/13	at Ohio State	+28 9-37 P	u49'
9/20	Gardner-Webb	-30' 52-35 L	o56'
9/27	Bowling Green	-7' 35-20 W	o50'
10/4	at Ball State	-14 14-20 L	u52'
10/11			
10/18	Northern Illinois	-10' 48-21 W	o42'
10/25	at Eastern Mich	-12' 28-21 L	u60'
11/1			
11/1	Miami (OH)	-2' 24-20 W	u51'
11/11	at Western Michigan		
11/18	Massachusetts		
11/28	at Buffalo		

### Ohio State (SU: 9-0, ATS: 7-1-1, O/U: 3-6)

Date	Opponent	Line Score	ATS/O/U
8/30	Texas	-1' 14-7 W	u46'
9/6	Grambling State	-54' 70-0 W	o62'
9/13	Ohio	-28 37-9 P	u49'
9/20			
9/27	at Washington	-9' 24-6 W	u53'
10/4	Minnesota	-23' 42-3 W	o42'
10/11	at Illinois	-14' 34-16 W	u51'
10/18	at Wisconsin	-25 34-0 W	u41'
10/25			
11/1	Penn State	-17' 38-14 W	o45'
11/8	at Purdue	-29 34-10 L	u49'
11/15	UCLA		
11/22	Rutgers		
11/29	at Michigan		

### Oklahoma (SU: 7-2, ATS: 5-4, O/U: 2-7)

Date	Opponent	Line Score	ATS/O/U
8/30	Illinois State	-40' 35-3 L	u40'
9/6	Michigan	-4 24-13 W	u60'
9/13	at Temple	-24 42-3 W	u50'
9/20	Auburn	-6' 24-17 W	u47'
9/27			
10/4	Kent State	-46' 44-0 L	u53'
10/11	† Texas	+2' 6-23 L	u44'
10/18	at South Carolina-4'	26-7 W	u42'
10/25	Ole Miss	-4' 26-34 L	o52'
11/1	at Tennessee	+3 33-27 W	o55'
11/8			
11/15	at Alabama		
11/22	Missouri		
11/29	LSU		

### Oklahoma State (SU: 1-8, ATS: 2-7, O/U: 5-4)

Date	Opponent	Line Score	ATS/O/U
8/28	UT-Martin	-26' 27-7 L	u56'
9/6	at Oregon	+28' 3-69 L	o55'
9/13			
9/19	Tulsa	-10 12-19 L	u54'
9/27	Baylor	+21 27-45 W	o58'
10/4	at Arizona	+21' 13-41 L	u57'
10/11	Houston	+14' 17-39 L	u47'
10/18	Cincinnati	+23' 17-49 L	o58'
10/25	at Texas Tech	+37' 0-42 L	u56'
11/1	at Kansas	+24' 21-38 W	o55'
11/8			
11/15	Kansas State		
11/22	at UCF		
11/29	Iowa State		

### Old Dominion (SU: 6-3, ATS: 5-4, O/U: 5-4)

Date	Opponent	Line Score	ATS/O/U
8/30	at Indiana	+23' 14-27 W	u53'
9/6	NC Central	-21' 54-6 W	o50'
9/13	at Virginia Tech	+5' 45-26 W	o51'
9/20			
9/27	Liberty	-14' 21-7 L	u53'
10/4	Coastal Carolina	-18' 47-7 W	o53'
10/11	at Marshall	-41' 24-48 L	o57'
10/18	at James Madison	+3 27-63 L	o47'
10/25	Appalachian St	-13' 24-21 L	u62'
11/1	at UL-Monroe	-17 31-6 W	u55'
11/8			
11/13	Troy		
11/22	at Georgia Southern		
11/29	Georgia State		

### Ole Miss (SU: 9-1, ATS: 6-4, O/U: 5-5)

Date	Opponent	Line Score	ATS/O/U
8/30	Georgia State	-33' 63-7 W	o60'
9/6	at Kentucky	-8 30-23 L	o51'
9/13	Arkansas	-3' 41-35 W	o60'
9/20	Tulane	-11' 45-10 W	u61'
9/27	LSU	-2' 24-19 W	u58'
10/4			
10/11	Washington St	-33 24-21 L	u58'
10/18	at Georgia	+7' 35-43 L	o56'
10/25	at Oklahoma	+4' 34-26 W	o52'
11/1	South Carolina	-12' 30-14 W	u55'
11/8	The Citadel	-51' 49-0 L	u63'
11/15	Florida		
11/22			
11/29	at Mississippi State		

### Oregon (SU: 6-1, ATS: 5-4, O/U: 4-5)

Date	Opponent	Line Score	ATS/O/U
8/30	Montana State	-29' 59-13 W	o56'
9/6	Oklahoma State	-28' 69-3 W	o55'
9/13	at Northwestern	-24' 34-14 L	u50'
9/20	Oregon State	-33 41-7 W	o52'
9/27	at Penn State-2ot+4'	30-24 W	u58'
10/4			
10/11	Indiana	-7 20-30 L	u51'
10/18	at Rutgers	-18 56-10 W	o46'
10/25	Wisconsin	-31' 21-7 L	u62'
11/1			
11/8	at Iowa	-4' 18-16 L	u41'
11/14	Minnesota		
11/22	USC		
11/29	at Washington		

### Oregon State (SU: 2-8, ATS: 3-7, O/U: 5-5)

Date	Opponent	Line Score	ATS/O/U
8/30	California	+2' 15-34 L	o48'
9/6	Fresno State	-1 27-36 L	o45'
9/13	at Texas Tech	+24 14-45 L	o46'
9/20	at Oregon	+33 7-41 L	u58'
9/27	Houston-ot	+12 24-27 W	u43'
10/4	at Appalachian St	+23 23-27 L	o58'
10/11	Wake Forest	+1' 14-39 L	o46'
10/18	Lafayette	-21' 45-13 W	o57'
10/25			
11/1	Washington St	+3' 10-7 W	u47'
11/8	Sam Houston St	-21 17-21 L	u52'
11/15	at Tulsa		
11/22			
11/29	at Washington State		

# Texas (SU: 7-2, ATS: 2-7, O/U: 4-5)

Date	Opponent	Line	Score	ATS/O/U
8/30	at Ohio State	+1'	7-14 L	u46'
9/6	San Jose State	-36'	38-7 L	u52'
9/13	UTEP	-39	27-10 L	u52
9/20	Sam Houston St	-39'	55-0 W	o51
9/27				
10/4	at Florida	-4'	21-29 L	u44'
10/11	† Oklahoma	-2'	23-6 W	u42'
10/18	at Kentucky-ot	-12	16-13 L	u45'
10/25	at Miss St-ot	-8	45-38 L	o49
11/1	Vanderbilt	-3'	34-31 L	o48
11/8				
11/15	at Georgia			
11/22	Arkansas			
11/29	Texas A&M			

# Texas A&M (SU: 9-0, ATS: 5-4, O/U: 7-2)

Date	Opponent	Line	Score	ATS/O/U
8/30	UTSA	-23'	42-24 L	o58'
9/6	Utah State	-34'	44-22 L	o57'
9/13	at Notre Dame	+6'	41-40 W	u49'
9/20				
9/27	Auburn	-6'	16-10 L	u51'
10/4	Mississippi State	-17'	31-9 W	u57'
10/11	Florida	-7	34-17 W	o48
10/18	at Arkansas	-7'	45-42 L	o57'
10/25	at LSU	-1'	49-25 W	o50'
11/1				
11/8	at Missouri	-6'	38-17 W	o48
11/15	South Carolina			
11/22	Samford			
11/29	at Texas			

# Texas State (SU: 3-6, ATS: 2-7, O/U: 6-3)

Date	Opponent	Line	Score	ATS/O/U
8/30	Eastern Michigan	-14	52-27 W	o56'
9/6	at UTSA	+4'	43-36 W	o64'
9/13	at Arizona State	+18'	15-34 L	u61
9/20	Nicholls State	-32'	35-3 L	u57
9/27				
10/4	at Arkansas State	-14	30-31 L	u64
10/11	Troy-ot	-7'	41-48 L	o53'
10/18	at Marshall-2ot	-2'	37-40 L	o65'
10/25				
10/28	James Madison	+7	20-52 L	o55'
11/8	at UL-Lafayette	-3'	39-42 L	o63
11/15	at Southern Miss			
11/22	UL-Monroe			
11/29	South Alabama			

# Texas Tech (SU: 9-1, ATS: 9-1, O/U: 4-6)

Date	Opponent	Line	Score	ATS/O/U
8/30	Ark Pine-Bluff	-54'	67-7 W	o62'
9/6	Kent State	-47'	62-14 W	o60
9/13	Oregon State	-24	45-14 W	u61
9/20	at Utah	+3	34-10 W	u58'
9/27				
10/4	at Houston	-13	35-11 W	u51'
10/11	Kansas	-13'	42-17 W	o58'
10/18	at Arizona State	-7'	22-26 L	u52'
10/25	Oklahoma State	-37'	42-0 W	u56'
11/1	at Kansas State	-7	43-20 W	o51'
11/8	BYU	-13'	29-7 W	u50
11/15	UCF			
11/22				
11/29	at West Virginia			

# Toledo (SU: 5-4, ATS: 6-3, O/U: 5-4)

Date	Opponent	Line	Score	ATS/O/U
8/30	at Kentucky	+10	16-24 W	u49
9/6	W. Kentucky	-8	45-21 W	o57
9/13	Morgan State	-33'	60-0 W	o54
9/20	at Western Mich	-13'	13-14 L	u48'
9/27	Akron	-21'	45-3 W	u49'
10/4				
10/11	at Bowling Green	-11	23-28 L	o45'
10/18	Kent State	-25'	45-10 W	o48'
10/25	at Washington St	-2	7-28 L	u45
11/1				
11/5	Northern Illinois	-16	42-3 W	o42
11/12	at Miami (OH)			
11/22	Ball State			
11/29	at Central Michigan			

# Troy (SU: 6-3, ATS: 6-3, O/U: 5-4)

Date	Opponent	Line	Score	ATS/O/U
8/30	Nicholls State	-20	38-21 L	o48'
9/6	at Clemson	+31	16-27 W	u51'
9/13	Memphis	+4	7-28 L	u50'
9/20	at Buffalo	+5'	21-17 W	u43'
9/27				
10/4	South Alabama-ot	+2	31-24 W	o47
10/11	at Texas State-ot	+7'	48-41 W	o53'
10/18	at UL-Monroe	-4'	37-14 W	o46'
10/25	UL-Lafayette	-7	35-23 W	o47'
11/1	Arkansas State	-7'	10-23 L	u52'
11/8				
11/13	at Old Dominion			
11/22	Georgia State			
11/29	at Southern Miss			

# Tulane (SU: 7-2, ATS: 4-4-1, O/U: 4-5)

Date	Opponent	Line	Score	ATS/O/U
8/30	Northwestern	-6	23-3 W	u45'
9/6	at South Alabama	-13'	33-31 L	o51
9/13	Duke	-1'	34-27 W	o52'
9/20	at Ole Miss	+11'	10-45 L	u61
9/27	at Tulsa	-14'	31-14 W	u52
10/4				
10/9	East Carolina	-7	26-19 P	u54
10/18	Army	-10	24-17 L	u44
10/25				
10/30	at UTSA	-6	26-48 L	o53'
11/7	at Memphis	+3	38-32 W	o53'
11/15	Florida Atlantic			
11/22	at Temple			
11/29	Charlotte			

# Tulsa (SU: 2-7, ATS: 4-5, O/U: 3-5-1)

Date	Opponent	Line	Score	ATS/O/U
8/30	Abilene Christian	-5'	35-7 W	u59'
9/6	at New Mexico St	-3	14-21 L	u52'
9/13	Navy	+14	23-42 L	o52'
9/20	at Oklahoma St	+10	19-12 W	u54'
9/27	Tulane	+14'	14-31 L	u52
10/4	at Memphis	+20'	7-45 L	u55
10/11				
10/16	at East Carolina	+16'	27-41 W	o55
10/25	Temple-ot	+5	37-38 W	o55
11/1				
11/8	at Florida Atlantic	+4	21-40 L	p61
11/15	Oregon State			
11/22	at Army			
11/29	UAB			

# UAB (SU: 3-6, ATS: 3-6, O/U: 5-4)

Date	Opponent	Line	Score	ATS/O/U
8/28	Alabama State	-21'	52-42 L	o53'
9/6	at Navy	+20'	24-38 W	o59
9/13	Akron	-12	31-28 L	u58
9/20	at Tennessee	+39	24-56 W	o69
9/27				
10/4	Army	+6'	13-31 L	u56
10/11	at Florida Atlantic	+5	33-55 L	u56'
10/18	Memphis	+23'	31-24 W	o69'
10/25				
11/1	at Connecticut	+10'	19-38 L	u61'
11/8	at Rice	+1	17-24 L	u51'
11/15	North Texas			
11/22	USF			
11/29	at Tulsa			

# UCF (SU: 4-5, ATS: 4-5, O/U: 4-5)

Date	Opponent	Line	Score	ATS/O/U
8/28	Jacksonville St	-20'	17-10 L	u51'
9/6	NCA&T	-37'	68-7 W	o53
9/13				
9/20	North Carolina	-7	34-9 W	u46'
9/27	at Kansas State	+6	20-34 L	u54
10/4	Kansas	+4	20-27 L	u49
10/11	at Cincinnati	+10	11-20 W	u56
10/18	West Virginia	-6'	45-13 W	o47
10/25				
11/1	at Baylor	+3	3-30 L	u58
11/7	Houston	-1	27-30 L	o47'
11/15	at Texas Tech			
11/22	Oklahoma State			
11/29	at BYU			

# UCLA (SU: 3-6, ATS: 3-6, O/U: 4-5)

Date	Opponent	Line	Score	ATS/O/U
8/30	Utah	+6'	10-43 L	o48'
9/6	at UNLV	-2'	23-30 L	u54
9/12	New Mexico	-15'	10-35 L	u54
9/20				
9/27	at Northwestern	+6	14-17 W	u46
10/4	Penn State	+24'	42-37 W	o48'
10/11	at Michigan St	+7	38-13 W	u51'
10/18	Maryland	-3'	20-17 L	u52'
10/25	at Indiana	+26'	6-56 L	o53
11/1				
11/8	Nebraska	-1'	21-28 L	o46
11/15	at Ohio State			
11/22	Washington			
11/29	at USC			

# UL-Lafayette (SU: 4-6, ATS: 5-5, O/U: 6-4)

Date	Opponent	Line	Score	ATS/O/U
8/30	Rice	-10	12-14 L	u48
9/6	McNeese State	-19	34-10 W	u50
9/13	at Missouri	+27	10-52 L	u47
9/20	at Eastern Mich	-2'	31-34 L	o51
9/27	Marshall-2ot	+2'	54-51 W	o48
10/4				
10/11	at James Madison	+18'	14-24 W	u45
10/18	Southern Miss	+5	10-22 L	u54'
10/25	at Troy	+7	23-35 L	u47'
11/1	at South Alabama	+4	31-22 W	o52'
11/8	Texas State	+3'	42-39 W	o63
11/15				
11/20	at Arkansas State			
11/29	UL-Monroe			

# UL-Monroe (SU: 3-6, ATS: 2-7, O/U: 5-4)

Date	Opponent	Line	Score	ATS/O/U
8/28	St. Francis (PA)	-30'	29-0 L	u47'
9/6	at Alabama	+34'	0-73 L	o49
9/13				
9/20	at UTEP	+6	31-25 W	u47
9/27	Arkansas State	-1'	28-16 W	o55'
10/4	at Northwestern	+13	7-42 L	o43
10/11	at Coa. Carolina	-2'	8-23 L	u46'
10/18	Troy	+4'	14-37 L	u46'
10/25	at Southern Miss	+14	21-49 L	o49'
11/1	Old Dominion	+17	6-31 L	u55'
11/8				
11/15	South Alabama			
11/22	at Texas State			
11/29	at UL-Lafayette			

# UNLV (SU: 7-2, ATS: 5-4, O/U: 5-4)

Date	Opponent	Line	Score	ATS/O/U
8/23	Idaho State	-30'	38-31 L	o68
8/29	at Sam Hou. St	-9	38-21 W	o60
9/6	UCLA	+2'	30-23 W	u54
9/13				
9/20	at Miami (OH)	-1'	41-38 W	o49'
9/27				
10/4	at Wyoming	-4'	31-17 W	u51
10/11	Air Force	-6'	51-48 L	o65'
10/18	at Boise State	+13	31-56 L	o60
10/25				
11/1	New Mexico	-4	35-40 L	o61
11/8	at Colorado State	-4'	42-10 W	u61
11/15	Utah State			
11/21	Hawaii			
11/29	at Nevada			

# USC (SU: 7-2, ATS: 5-4, O/U: 5-4)

Date	Opponent	Line	Score	ATS/O/U
8/30	Missouri State	-36'	73-13 W	o60
9/6	Georgia Southern	-29	59-20 W	o62
9/13	at Purdue	-20'	33-17 L	u55'
9/20	Michigan State	-18'	45-31 L	o59'
9/27	at Illinois	-6'	32-34 L	o61
10/4				
10/11	Michigan	-3	31-13 W	u58'
10/18	at Notre Dame	+10'	24-34 W	u60'
10/25				
11/1	at Nebraska	-4'	21-17 L	u59'
11/7	Northwestern	-14	38-17 W	o54'
11/15	Iowa			
11/22	at Oregon			
11/29	UCLA			

# USF (SU: 7-2, ATS: 6-2-1, O/U: 6-3)

Date	Opponent	Line	Score	ATS/O/U
8/28	Boise State	+4'	34-7 W	u61
9/6	at Florida	+18	18-16 W	u57
9/13	at Miami (FL)	-17'	12-49 L	o56'
9/20	South Carolina St	-35'	63-14 W	o58'
9/27				
10/3	Charlotte	-28	54-26 P	o54'
10/10	at North Texas	+2'	63-36 W	o68
10/18	Florida Atlantic	-20'	48-13 W	u72
10/25	at Memphis	-3'	31-34 L	o59
11/1				
11/6	UTSA	-14	55-23 W	o66'
11/15	at Navy			
11/22	at UAB			
11/29	Rice			

# Utah (SU: 7-2, ATS: 7-2, O/U: 6-3)

Date	Opponent	Line	Score	ATS
8/30	at UCLA	-6'	43-10 W	
9/6	Cal Poly	-42'	63-9 W	
9/13	at Wyoming	-24	31-6 W	
9/20	Texas Tech	-3	10-34 L	
9/27	at West Virginia	-13'	48-14 W	
10/4				
10/11	Arizona State	-9'	42-10 W	
10/18	at BYU	-4'	21-24 L	
10/25	Colorado	-14	53-7 W	
11/1	Cincinnati	-11	45-14 W	
11/8				
11/15	at Baylor			
11/22	Kansas State			
11/28	at Kansas			



# BP SPORTS 2025 FOOTBALL PACKAGES

Item:	Regular:	Sale:
2025 CFB Preview (Win Totals, Futures)	\$50	\$10
2025 Newsletter (Includes Writeups)	\$100	\$30
2025 VIP Service (CFB/NFL Best Bets)	\$749	\$299

**Should I sign up for the Newsletter or VIP?**

	NL	VIP
Bet less than 10 games each week	✓	
\$100 or less per bet	✓	
Can only bet on Gamedays	✓	
One Update Sent Each Week	✓	
Bet more than 10 games each week		✓
\$250 or more per bet		✓
Can bet early in the week		✓
Daily updates via Email/Text		✓

## WEEKLY NEWSLETTER

- Emailed every Wednesday during the season
- Write-ups on every CFB/NFL game each week
- ATS Trends • Bad Beats • Misleading Finals
- Major Injuries • CFB Power Ratings on all teams
- ATS Schedule Logs for every CFB/NFL team
- Computer Projected Lines for Every CFB Game
- Will Include Score Projections but will NOT include Best Bets (VIP Only)

## 2025 CFB PREVIEW

- Emailed in Mid-July
- Team-By-Team 2025 Projections
- Brad Powers' Vegas Power Ratings
- Projected Lines on Every Game
- Season Win Total Projections & Best Bets
- Pointsread Value for Starting QB's
- Heisman, Conference & Title Future Bets
- Game of Year & Week 1 Best Bets

order online at [bradpowerssports.com](http://bradpowerssports.com)