

GRADE 2 SINGLE CYLINDER DEADBOLT WITH TURN

BHMA
GRAND NATIONAL
GRADE 2



D241



A12639 001 00



C646A626

- Accepts all small format interchangeable style cores (SFIC) and conventional cylinders
- Deadbolt thrown or retracted by key or by turn
- Bolt automatically deadlocks when fully thrown, 1" projection
- Door thickness: 1-3/8" to 1-3/4"
- Backset: 2-3/8" - 2-3/4"
- 1-1/8" x 2-1/4" faceplate
- Non-handed
- ANSI/BHMA standard: A156.5, 2001, Grade 2
- UL listed, A label, 3 hours

MFG #	DESCRIPTION	EZ #
D241BD626	Single Cylinder I/C Deadbolt Less Core	091331
A12639 001 00	6 Pin Spring Cover For I/C Core 100/pk	003753
C646A626	I/C A Keyway 6PIN Uncombined	035507

THUMBTURN INDICATOR LOCK



D271



A30155 000 00

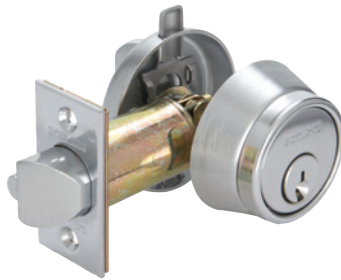
- Deadbolt lock used to provide privacy
- When locked from inside the room, deadbolt locks the door, and a visual "In Use" sign appears
- When bolt is retracted, message reads "Vacant"
- Emergency key opens lock from the outside when required
- Finish: Satin chrome

MFG #	DESCRIPTION	EZ #
D271 626	Thumbturn Indicator Lock	035400
A30155 000 00	Emergency Release Tool	062590



B250 SERIES SINGLE CYLINDER DEADLATCHES

BHMA
CERTIFIED
GRADE 1



- Fits doors 1-3/8" to 1-3/4" thick
- Deadlocking latch bolt prevents "shimming" of the latch
- "Holdback" feature retains the deadlatch in a retracted position when desired
- Stocked 2 3/4" backset with "C" keyway
- Keying: KD standard, 6 pin cylinder keyed to 5
- ANSI A156.5 Grade 1

MFG #	KEYWAY	FINISH	EZ #
SINGLE CYLINDER			
B250PD6 605C 12 103	C Keyway	Polished Brass	037071
B250PD6 626C 12 103	C Keyway	Satin Chrome	037072
DOUBLE CYLINDER			
B252PD6 626C 12 103	C Keyway	Satin Chrome	037073

B500 SERIES SINGLE & DOUBLE DEADBOLTS

BHMA
CERTIFIED
GRADE 2



B560P626

- Adapter rings: Trim ring with anti-pry shield standard, 2-1/2" outer diameter
- Removable to fit 1-1/2" door preps
- Exposed trim: wrought brass or bronze, reinforced with steel security insert
- Deadbolt: 1" x 2-1/4", square corner faceplate, 1" housing diameter, 1" throw
- Strike: 1-1/8" x 2-3/4", square corner, box
- Backset: Adjustable for 2-3/8" or 2 3/4"
- Keying: KD standard, 6 pin cylinder keyed to 5
- Door thickness: 1-3/8" - 1-3/4"
- Reinforcement: Metal dust box reinforcer with three 3" screws
- Certification: ANSI A156.5, 2001, Grade 2

B571 626

- Door bolt occupancy indicator used on washrooms



B571 626

MFG #	KEYWAY	FINISH	EZ #
SINGLE CYLINDER			
B560P605C	C Keyway	Polished Brass	088376
B560PF605C	C Keyway	Polished Brass	091228
B560P609	C Keyway	Antique Brass	090416
B560P612	C Keyway	Satin Bronze	090417
B560P613	C Keyway	Antique Bronze	090418
B560P626C	C Keyway	Satin Chrome	088377
B560PF626C	C Keyway	Satin Chrome	091227
FIRE RATED SINGLE CYLINDER			
B560P605E	E Keyway	Polished Brass	090414
B560P626E	E Keyway	Satin Chrome	090203
DOUBLE CYLINDER			
B562P605C	C Keyway	Polished Brass	088378
B562P626C	C Keyway	Satin Chrome	088379
INDICATOR BOLT			
B571 626	—	Satin Chrome	090441
THUMBTURN DEADBOLT			
B580 626	—	Satin Chrome	090234



B580 626