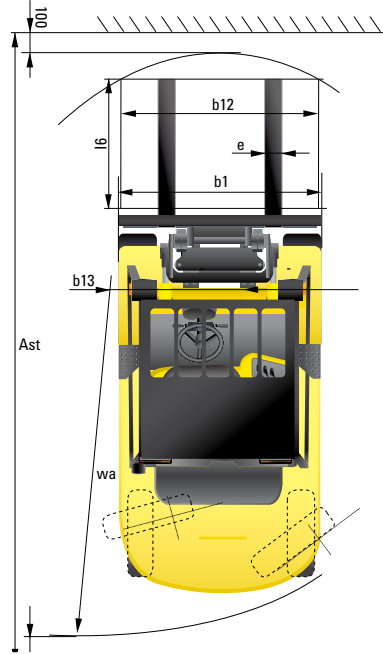
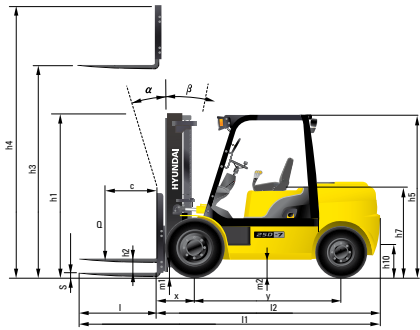


Dimension



Specification

Identification				
1.1	Manufacturer	Hyundai	Hyundai	Hyundai
1.2	Manufacturer's type designation	20D-7	25D-7	30D-7
1.3	Drive: electric (battery or mains), diesel, petrol, fuel gas, manual	DIESEL	DIESEL	DIESEL
1.4	Type of operation: hand, pedestrian, standing, seated, order-picker	seated	seated	seated
1.5	Load capacity / rated load	kg	2,000	2,500
1.6	Load center distance	c mm	500	500
1.8	Load distance, center of drive axle to fork	x mm	468	468
1.9	Wheelbase	y mm	1,650	1,700
Weights				
2.1	Service weight	kg	3,604	3,894
2.2	Axle loading, loaded front/rear	kg	4,847 / 757	5,579 / 815
2.3	Axle loading, unloaded front/rear	kg	1,683 / 1,921	1,623 / 2,271
Wheels, Chassis				
3.1	Tires: solid rubber, superelastic, pneumatic, polyurethane	pneumatic	pneumatic	pneumatic
3.2	Tires size, front	7.00-12-12PR	7.00-12-12PR	8.15-15-14PR
3.3	Tires size, rear	6.50-10-12PR	6.50-10-12PR	6.50-10-12PR
3.5	Wheels, number front x rear (x=driven wheels)	x2 / 2	x2 / 2	x2 / 2
3.6	Track width, front	mm	965	1,005
3.7	Track width, rear	mm	980	980
Basic Dimensions				
4.1	Mast / fork carriage tilt forward / backward (α / β)	degrees	6 / 10	6 / 10
4.2	Lowered mast height	h1 mm	2,175	2,190
4.3	Free lift	h2 mm	155	155
4.4	Lift height	h3 mm	3,300	3,300
4.5	Extended mast height	h4 mm	4,485	4,485
4.7	Overhead guard (cab) height	h5 mm	2,160	2,180
4.8	Seat height / standing height	h7 mm	1,110	1,130
4.12	Coupling height	h10 mm	283	299
4.19	Overall length	l1 mm	3,597	3,657
4.20	Length to face of forks	l2 mm	2,547	2,607
4.21	Overall width	b1 mm	1,160	1,230
4.22	Fork dimensions (hook type)	l / e / s mm	1,050 x 100 x 45	1,050 x 122 x 45
4.23	Fork carriage ISO 2328, class / type A,B	2A	2A	3A
4.24	Fork-carriage width	b12 mm	1,102	1,102
4.31	Ground clearance, loaded, under mast	m1 mm	130	145
4.32	Ground clearance, centre of wheelbase	m2 mm	171	189
4.33	Aisle width for pallets 1,000x1,200 crossways (LxW)	Ast mm	3,928	4,066
4.34	Aisle width for pallets 800x1,200 lengthways (WxL)	Ast mm	4,128	4,266
4.35	Turning radius	Wa mm	2,260	2,398
4.36	Smallest pivot point distance	b13 mm	714	731
Performance Data				
5.1	Travel speed, unloaded	km/h	18.5	19.4
5.2	Lift speed, loaded/ unloaded	mm/s	560 / 590	540 / 590
5.3	Lowering speed, loaded/unloaded	mm/s	500 / 450	500 / 450
5.5	Drawbar pull, loaded	kg	2,325	2,345
5.7	Gradient performance, loaded/ unloaded	%	45.0 / 24.8	39.0 / 22.1
5.9	Acceleration time, loaded/ unloaded (10m)	sec	NA	NA
5.10	Service brake		FOOT	FOOT
Engine				
6.1	Engine manufacturer / type	KUBOTA V3300	KUBOTA V3300	KUBOTA V3300
6.2	Engine power acc. to ISO 1585	kW	47	47
6.3	Rated speed	1/min	2,300	2,300
6.4	No. of cylinder / cubic capacity	anz/cm ³	4 / 3,318	4 / 3,318
6.5	Fuel consumption acc. To VDI cycle	ℓ / h	2.46	2.86
Other Details				
8.1	Type of drive control	power shift	power shift	power shift
8.2	Operating pressure (System / Attach)	bar	200 / 165	200 / 165
8.3	Oil volume	ℓ	30	30
8.4	Sound level at driver's ear according to (DIN 12 053)	db(A)	80	80

1) with DZ mast +25mm; with integrated sideshift x=375mm(with DZ mast +25mm); with hook-on sideshift x =410.5mm(with DZ mast +25mm)



Some of the photos may include optional equipment.

FORKLIFT TRUCKS **Environmentally - Friendly**

20D/25D/30D/33D-7

■ Contact your Hyundai dealer for more information. The machine shown may vary according to International standards.

HYUNDAI | FORKLIFT
HEAVY INDUSTRIES CO.,LTD.

Head Office (Sales Office)
14th FL., HYUNDAI BLDG. 140-2, KYE-DONG, JONGNO-GU, SEOUL, KOREA 110-793
TEL: (82) (2) 746-4505, 4609 FAX: (82) (2) 746-7444-7445

Americas Operation: Hyundai Construction Equipment Americas, Inc.
6100 ATLANTIC BOULEVARD NORCROSS GA 30071 U.S.A TEL: (1)847-678-823-7802 FAX: (1)847-678-823-7778

Europe Operation: Hyundai Heavy Industries Europe N.V.
VOSSENDAAL 11, 2440 GEEL, BELGIUM TEL: (32) 14-56-2200 FAX: (32) 14-59-3405



PLEASE CONTACT

www.hyundai-ce.com

2013. 06 Rev.9

HYUNDAI
HEAVY INDUSTRIES CO.,LTD.

We build a better future

20D/25D/30D/33D -7

Beyond the Limits

Hyundai introduces a new line of 7 series diesel forklift trucks.

Excellent power and performance make your business more profitable.



OPSS (Operator Presence Sensing System)

Control of mast tilting, lifting and lowering is not possible through operation of the appropriate control when the operator is not in the normal position. (Option)

High Power & Performance

Powerful Engine KUBOTA V3300 Engine

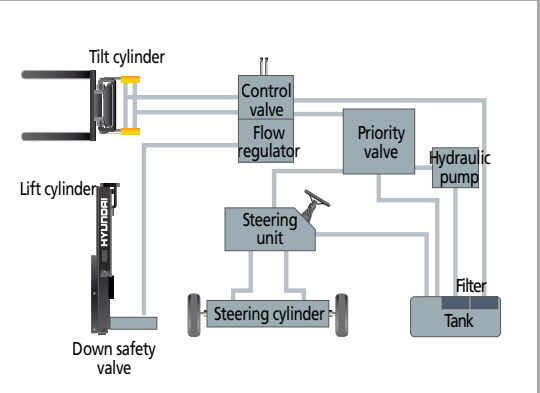
Market approved quality of Kubota V3300 engine ensures incomparable performance, durability and additional value to the machine. 47kW of the engine is more than enough to suit any work, not just with normal 47kW but with special attachments requiring high power as well. (EPA/EU Tier-2 Certified)

47kW/ 2,300rpm



State-of-the-art hydraulic system

The latest large-capacity hydraulic system reacts quickly during operation, and a low-noise control valve increases both efficiency and durability.



Ability of best,
The new master on the
job-site!

Smooth running, efficient and ergonomically designed, 20/25/30/33D-7 series are made to meet your needs.

Some of the photos may include optional equipment.

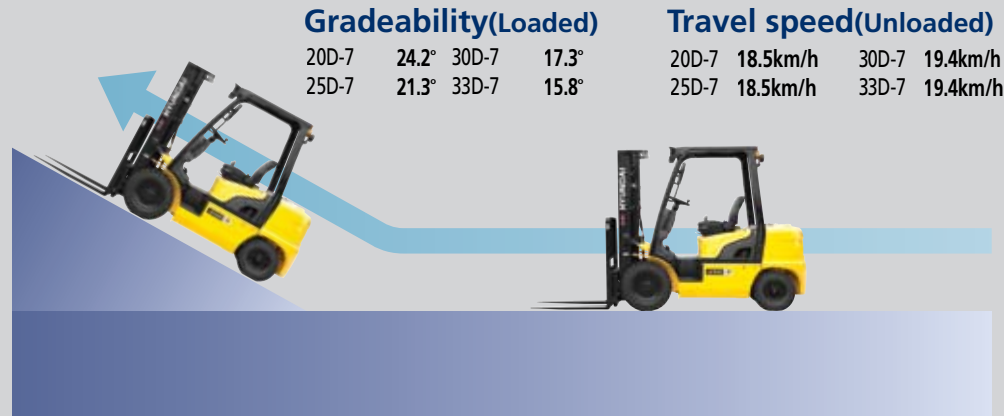


Fast and stable performance

Being able to quickly raise and lower the mast, as well as tilt it forward and backward, provides the best operational conditions during unloading. When the truck is fully loaded, mast lowering speed is carefully controlled to ensure safety by the down control valve.

Faster travel speed & Gradeability

The powerful high-output engine provides greater acceleration, better gradeability and faster travel speed on any tough terrain or slope.



Increased mast tilting angle

Utilizing the mast tilting angle of 6 degrees forward and 10 degrees backward, the operator can safely and rapidly perform loading and unloading jobs.



Wet disc brake system

The wet disc brake system is virtually maintenance free and is enclosed to protect from dust and water.



Fully hydrostatic power steering

A hydraulic steering system always guarantees smooth and flexible steering, preventing overrun and kick-back.



Key-locking fuel cap

Increased security on job sites with locking fuel cap, plus an increased capacity fuel tank for less down time. (option)

Comfortable Operation



Adjustable steering wheel
Steering wheel with horn button can be adjusted by a lever on the right-hand side for the most comfortable operator position.



Easy and safe shift lever
A single lever on the left side of the steering column gives the operator fast, easy control of direction. The engine can be started in case of neutral position of this lever.



Multi-function switch lever
Multi-functional switch lever gives easy access to lights and horn.



Quick response of operating control levers
Only minimal operator's effort is required for precise, safe and productive control.



Some of the photos may include optional equipment.

Ergonomics driving space design!

A design based on human engineering relieves fatigue and increase operator's efficiency.



Ergonomically positioned pedals
Based on human engineering, the accelerator, brake and inching pedals are optimally positioned for convenience while operating the equipment.



Cup holder & console box
Additional storage spaces are located inside the operating space for operator's convenience.



New high visibility for safe operation
The operator is able to work with increased safety and accuracy due to a wider view mast.

Operator friendly gauges and water-resistant monitor panel



- | | |
|---|---------------------------|
| ① Parking brake lamp | ⑨ Water separator lamp |
| ② Directional indicators | ⑩ Pre-heater indicator |
| ③ Fuel warning lamp | ⑪ Water temperature gauge |
| ④ Engine oil warning lamp | ⑫ Fuel gauge |
| ⑤ Transmission oil temperature warning lamp | ⑬ Hour meter |
| ⑥ Battery charging warning lamp | ⑭ Engine check lamp |
| ⑦ Air cleaner filter warning light | ⑮ Seat belt warning |
| ⑧ Working light indicator | ⑯ OPS warning |
| | ⑰ Brake oil warning lamp |

Easily adjustable suspension seat

An attractive and adjustable seat, based on a human engineering design, provides great comfort, safety and durability.



Full-floating headguard mount

The anti-vibration rubber is installed between the guard and truck frame to reduce the source of vibration and noise while driving. This not only reduces operator's fatigue but also increases safety.



Endurance & Safety

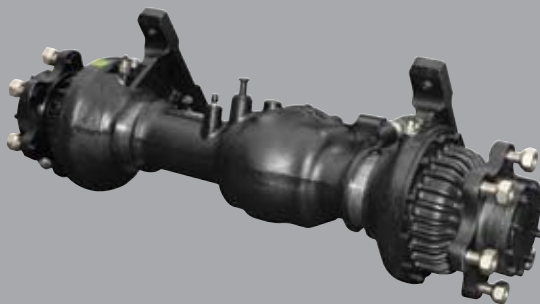
Strong overhead guard

The safety overhead guard meets EEC and ANSI regulations and protects the operator during hazardous jobs.



Parking brake

Ratchet type parking brake requires less efforts from the operator to set.



Highly durable split type drive axle

The bevel gear set and hub reduction axle smoothly delivers desired torque to the drive wheels.

Danger-free through high durability!

Safety and durability are priorities in the design of the equipment.



Some of the photos may include optional equipment.



Large footboard & Hand grip

Wide "open" step offers convenience and safety when entering and exiting truck.



Heavy duty single unit frame

Heavy duty single unit type frame, designed on the basis of accurate structural analysis, guarantees durability and safety.



Improvement in maintenance of electric parts

Various electric parts are centralized in dash board resulting in improvement in maintenance.



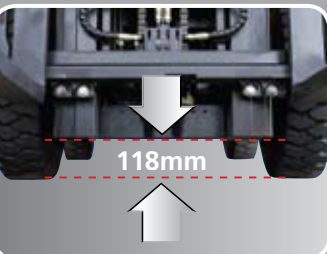
Expansion bellows

The expansion bellows absorbs vibration and reduces noise generated from the exhaust gas system and also extends the life cycle of exhaust gas system.



Bright, protected eadlights

Bright, protected headlights are positioned for exceptional visibility.



Ground clearance

The engine and transmission are assembled horizontally and positioned high in the frame to protect expansive components during operation on rugged surface.

Durability **Easy** Maintenance



Electrically monitored air filter

Air cleaner sensor alerts the operator of a restricted air filter and allows replacement before damage.



Brake fluid reservoir

When the brake oil level become lower than Min. level, the warning lamp on the cluster is turned on.



An accessible, compact fuse box for easy inspection

Centralized design for easy service!

An ideal arrangement of component parts ensures easy access and convenience for maintenance.



Hydraulic oil check



Automatic self locking gas spring

Engine compartment hood is held safely open by a self locking gas spring.



Easy change air cleaner

The air filter is readily accessible for cleaning or replacement. (7inch Cyclone Type)



Large open engine hood

Highly accessible engine compartment assures fast and efficient maintenance.



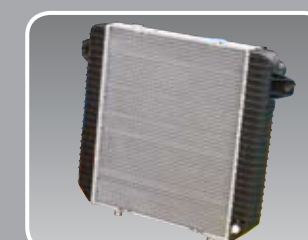
Battery master switch



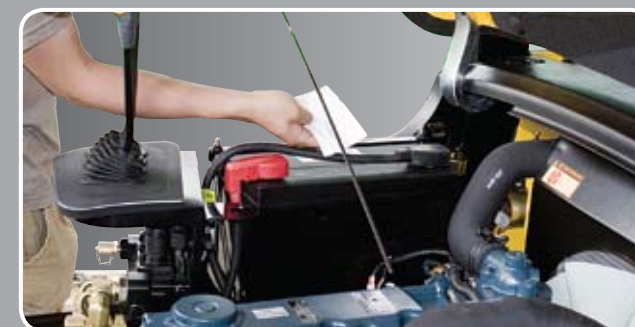
Portable side cover



One touch(tool-less) floor plate



Aluminum radiator with superb protection against heat



Engine oil condition check

Some of the photos may include optional equipment.

Specification

Mast Specification (20D/25D/30D-7)

Mast Type		Maximum Fork Height (mm)	Overall Height Lowered (mm)	Free Lift Height				Tilt Angle		Load capacity w / o integral side shift at 500 mm LC						Load capacity w / integral side shift at 500 mm LC						Truck Weight Unload						
				With bkr (mm)		With / o bkr (mm)		deg		Single Tire (kg)			Double Tire (kg)			Single Tire (kg)			Double Tire (kg)			Single Tire (kg)			Double Tire (kg)			
				20/25D-7	30D-7	20/25D-7	30D-7	20/25D-7	30D-7	Fwd	Rwd	20D-7	25D-7	30D-7	20D-7	25D-7	30D-7	20D-7	25D-7	30D-7	20D-7	25D-7	30D-7	20D-7	25D-7	30D-7	20D-7	25D-7
2-Stage limited free lift	V300	3,000	2,025	2,040	155	155	155	155	6	10	2,000	2,500	3,000	2,000	2,500	3,000	2,000	2,500	3,000	2,000	2,500	3,000	3,584	3,874	4,391	3,721	4,011	4,478
	*V330	3,300	2,175	2,190	155	155	155	155	6	10	2,000	2,500	3,000	2,000	2,500	3,000	2,000	2,500	3,000	2,000	2,500	3,000	3,604	3,894	4,411	3,740	4,030	4,498
	V350	3,500	2,275	2,290	155	155	155	155	6	10	2,000	2,500	3,000	2,000	2,500	3,000	2,000	2,500	3,000	2,000	2,500	3,000	3,621	3,911	4,429	3,757	4,047	4,516
	V370	3,700	2,425	2,440	155	155	155	155	6	10	2,000	2,500	3,000	2,000	2,500	3,000	2,000	2,500	3,000	2,000	2,500	3,000	3,643	3,933	4,452	3,779	4,069	4,539
	V400	4,000	2,575	2,590	155	155	155	155	6	10	2,000	2,500	3,000	2,000	2,500	3,000	2,000	2,475	2,950	2,000	2,500	2,975	3,673	3,963	4,483	3,809	4,099	4,570
	V430	4,300	2,725	2,740	155	155	155	155	6	6	2,000	2,450	2,925	2,000	2,500	3,000	1,950	2,400	2,875	2,000	2,450	2,925	3,725	4,015	4,536	3,861	4,151	4,622
	V450	4,500	2,875	2,890	155	155	155	155	6	6	2,000	2,400	2,875	2,000	2,475	2,950	1,930	2,350	2,825	2,000	2,400	2,875	3,747	4,037	4,558	3,883	4,173	4,645
	V470	4,700	2,975	2,990	155	155	155	155	6	6	2,000	2,350	2,825	2,000	2,450	2,900	1,900	2,325	2,750	2,000	2,375	2,825	3,761	4,051	4,573	3,897	4,187	4,660
2-Stage full free lift	V500	5,000	3,125	3,140	155	155	155	155	6	6	1,970	2,300	2,775	2,000	2,400	2,850	1,850	2,275	2,700	1,950	2,350	2,775	3,783	4,073	4,596	3,919	4,209	4,683
	VF290	2,900	2,025	2,040	845	860	1,377	1,314	6	6	2,000	2,500	3,000	2,000	2,500	3,000	2,000	2,500	3,000	2,000	2,500	3,000	3,630	3,920	4,431	3,767	4,057	4,518
3-Stage full free lift	VF320	3,200	2,175	2,190	995	1,010	1,527	1,464	6	6	2,000	2,500	3,000	2,000	2,500	3,000	2,000	2,500	3,000	2,000	2,500	3,000	3,664	3,954	4,467	3,801	4,091	4,553
	TF370/TS370	3,700	1,825	1,840	645	660	1,177	1,114	6	6	2,000	2,500	3,000	2,000	2,500	3,000	2,000	2,450	2,900	2,000	2,500	2,950	3,721	4,011	4,541	3,858	4,148	4,627
	TF400/TS400	4,000	1,925	1,940	745	760	1,277	1,214	6	6	2,000	2,450	2,900	2,000	2,500	2,975	1,950	2,400	2,850	2,000	2,450	2,900	3,745	4,035	4,565	3,882	4,172	4,651
	TF430/TS430	4,300	2,025	2,040	845	860	1,377	1,314	6	6	2,000	2,375	2,850	2,000	2,450	2,900	1,900	2,350	2,775	2,000	2,400	2,825	3,763	4,053	4,587	3,900	4,190	4,673
	TF450/TS450	4,500	2,125	2,140	945	960	1,477	1,414	6	6	2,000	2,350	2,800	2,000	2,425	2,850	1,875	2,325	2,725	1,950	2,350	2,775	3,785	4,075	4,613	3,922	4,212	4,699
	TF470/TS470	4,700	2,175	2,190	995	1,010	1,527	1,464	6	6	1,950	2,300	2,775	2,000	2,375	2,825	1,850	2,275	2,675	1,925	2,300	2,725	3,798	4,088	4,627	3,935	4,225	4,713
	TF500/TS500	5,000	2,275	2,290	1,095	1,110	1,627	1,564	6	6	1,900	2,250	2,700	1,950	2,325	2,750	1,800	2,200	2,600	1,900	2,275	2,675	3,820	4,110	4,649	3,957	4,247	4,735
	TF550/TS550	5,500	2,475	2,490	1,295	1,310	1,827	1,764	6	6	1,825	1,800	2,600	1,875	2,250	2,650	1,725	1,700	2,525	1,825	2,200	2,575	3,860	4,150	4,694	3,997	4,287	4,780
4-Stage full free lift	TF600/TS600	6,000	2,675	2,690	1,495	1,510	2,027	1,964	6	6	1,500	1,250	1,900	1,825	2,150	2,550	1,400	1,150	1,750	1,775	2,100	2,475	3,924	4,214	4,763	4,061	4,351	4,849
	QF610	6,115	2,177	2,175	997	955	1,512	1,449	3	3	1,550	1,650	1,870	1,580	1,910	2,400	1,485	1,585	1,770	1,515	1,845	2,300	4,134	4,424	4,911	4,272	4,562	4,987
	QF660	6,615	2,377	2,375	1,197	1,195	1,712	1,649	3	3	1,450	1,550	1,750	1,490	1,820	2,280	1,385	1,685	1,650	1,425	1,360	2,180	4,194	4,484	4,971	4,332	4,622	5,047
	QF700	7,015	2,477	2,475	1,297	1,295	1,812	1,749	3	3	1,240	1,300	1,450	1,400	1,720	2,170	1,175	1,110	1,350	1,335	1,270	2,070	4,224	4,515	5,001	4,363	4,653	5,078
	QF745	7,465	2,627	2,625	1,447	1,445	1,962	1,899	3	3	1,150	1,200	1,300	1,300	1,610	2,040	1,085	1,020	1,200	1,235	1,175	1,940	4,270	4,560	5,047	4,469	4,699	5,123
	QF790	7,915	2,777	2,775	1,597	1,595	2,112	2,049	3	3	700	750	800	900	1,000	1,200	635	570	700	835	770	1,100	4,370	4,661	5,147	4,509	4,799	5,224

※ TS-Mast : Wide Visible 3-Stage Full Free Lift Mast with 2 Free Lift Cylinders.

Mast Specification (33D-7)

Mast Type		Maximum Fork Height (mm)	Overall Height Lowered (mm)	Free Lift Height		Tilt Angle		Load capacity w / o integral side shift at 500 mm LC		Load capacity w / integral side shift at 500 mm LC		Truck Weight Unload	
				With bkr(mm)	With / o bkr(mm)	deg	Single Tire (kg)	Double Tire (kg)	Single Tire (kg)	Double Tire (kg)	Single Tire (kg)	Double Tire (kg)	
													33D-7
2-Stage limited free lift	V290	2,900	2,040	155	155	6	10	3,300	3,300	3,300	3,300	4,799	4,890
	*V320	3,200	2,190	155	155	6	10	3,300	3,300	3,300	3,300	4,823	4,914
	V340	3,400	2,290	155	155	6	10	3,300	3,300	3,300	3,300	4,839	4,930
	V360	3,600	2,440	155	155	6	10	3,300	3,300	3,300	3,300	4,862	4,953
	V390	3,900	2,590	155	155	6	10	3,300	3,300	3,300	3,300	4,894	4,985
	V420	4,200	2,740	155	155	6	6	3,300	3,300	3,275	3,300	4,948	5039
	V440	4,400	2,890	155	155	6	6	3,275	3,300	3,200	3,300	4,972	5,063
	V460	4,600	2,990	155	155	6	6	3,225	3,300	3,150	3,250	4,987	5,078
	V490	4,900	3,140	155	155	6	6	3,175	3,250	3,100	3,150	5,011	5,102
2-Stage full free lift	VF290	2,900	2,090	910	1,269	6	6	3,300	3,300	3,300	3,300	4,837	4,928
	VF320	3,200	2,240	1,060	1,419	6	6	3,300	3,300	3,300	3,300	4,873	4,964
3-Stage full free lift	TF370/TS370	3,700	1,890	710	1,069	6	6	3,300	3,300	3,300	3,300	4,980	5,071
	TF400/TS400	4,000	1,990	810	1,169	6	6	3,275	3,300	3,200	3,300	5,002	5,093
	TF430/TS430	4,300	2,090	910	1,269	6	6	3,200	3,300	3,150	3,225	5,023	5,114
	TF450/TS450	4,500	2,190	1,010	1,369	6	6	3,150	3,250	3,075	3,175	5,045	5,136
	TF470/TS470	4,700	2,240	1,060	1,419	6	6	3,100	3,200	3,025	3,125	5,058	5,149
	TF500/TS500	5,000	2,340	1,160	1,519	6	6	3,050	3,125	2,950	3,050	5,081	5,172
	TF550/TS550	5,500	2,540	1,360	1,719	6	6	2,700	3,000	2,450	2,925	5,124	5,215
	TF600/TS600	6,000	2,740	1,560	1,919	6	6	1,750	2,900	1,450	2,825	5,197	5,288
4-Stage full free lift	QF610	6,115	2,225	1,045	1,449	3	3	1,950	2,830	1,850	2,730	5,296	5,372
	QF660	6,615	2,425	1,245	1,649	3	3	1,850	2,700	1,750	2,600	5,356	5,433
	QF700	7,015	2,525	1,345	1,749	3	3	1,550	2,580	1,450	2,480	5,386	5,462
	QF745	7,465	2,675	1,495	1,899	3	3	1,000	2,440	900	2,340	5,428	5,505
	QF790	7,915	2,825	1,645	2,049	3	3	600	1,300	500	1,200	5,532	5,609