



*Since 1948 Exploring the Wonderful World of Beekeeping Together*

## **The Bee Buzzer**

*Monthly Publication of the*

### **Northeastern Kansas Beekeepers' Association**

VOLUME 76, NUMBER 5

EDITOR: TIM MARSHALL

May 2024

#### **General Meeting**

**Monday, May 20th, 2024 (7:00 p.m.)**

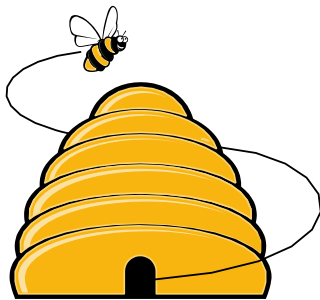
Douglas County Fairgrounds Bldg. 21N

2110 Harper St., Lawrence KS

**Main Program: Chemical Free Beekeeping** presented by Cathy Misko. While maintaining a focus on genetics, she practices “as natural as possible” management with a commitment to IPM, averages 25 colonies, and has been chemical free for 15 years. Cathy is an Eastern Apicultural Society (EAS) Certified Master Beekeeper, enjoys digging in dirt, sharing sweetness from Dancing Bees Ranch, and loving on her family, especially her physician hubby of 44 years and their 12 grands!!

#### **Beelines**

**By President Cheryl Burkhead**



Thank you to those that gave of their time in the busy month of April to distribute club information at the package and nuc pick up in Lenexa. It is firmly my belief that those who enter into beekeeping and actively participate in clubs and continuously strive to learn are more successful in their beekeeping endeavors. We have made many more people aware of our local clubs in the area that can help them learn about bees and teach best management practices in beekeeping.

Don't delay in getting those supers on your colonies. I like to do a final check to make sure the colony is queen-right before adding supers. Dutch Clover is already in bloom. Black Locust will be blooming soon. We are several weeks ahead on most of our floral sources. Beekeeping is regional and I see differences in floral flows from yard to yard. Don't make your management decisions by the calendar only, but by what you are seeing in your apiaries and watching your floral sources. Our recent rainfalls will have a positive impact as well.

Don't be discouraged if your colony swarms. Remember that only healthy colonies swarm. There are many techniques for swarm mitigation. Many can be quite laborious and time consuming. The age of your queen is likely one of the greatest determining factors as to whether your colony will swarm. If the colony swarms early enough (typically before May 1 in my area) the colony still has time to recover and can make you some honey especially if you already have a drawn super. Catch that swarm and now you can potentially get a honey crop out of both.

June 1st is less than a month away. Have you registered for FunDay? We have a great group of speakers, an open apiary, activities for kids, a swarm demonstration, silent auction, vendors, and homemade honey ice cream! Come and enjoy a day of beekeeping fun, fellowship, and learning. See you there!



### 2024 Meeting Dates:

- May 20<sup>th</sup>, Open Apiary 5pm, Monthly Meeting (Bldg. 21)
- June 1<sup>st</sup>, FunDay!!
- June 8<sup>th</sup>, Open Apiary at Pendleton's at 9am
- June 13<sup>th</sup>, Joli and Cecil's Open Apiary at 5:30pm
- June 17<sup>th</sup>, Open Apiary at Pendleton's at 5pm



### Ol' Bee Gal

April Showers bring May Flowers and May Flowers bring....swarms?? That seems to be what's in our garden this month. Seriously, how is your newly started colony progressing? I think that can be one of the most difficult considerations for the newest beekeepers. Is this hive progressing/growing as it should? Is my queen laying the correct amount of eggs? Do they have enough food to support colony growth?

If you started two colonies, you have some means of comparison. Is colony #1 at about the same growth point as colony #2? One of the things you should always be doing during these first inspections is counting—the number of frames of brood, the number of frames of pollen, the number of frames of honey (cured and capped) and the number of frames of nectar. In the early stages, it's probably not frames, just portions of frames but take notice all the same. At this time of year, ALL these should be increasing with each weekly inspection (yes, you should be inspecting your colony weekly). It is typical that one hive will outproduce another hive even with the exact same floral sources available. When should you become alarmed? If one hive has a 25% difference, take notice. If a hive has a 50% difference, it may be time to act. Determining the cause of the difference is the first step. Was there a physical event that set back one of the colonies? Maybe they experienced storm damage, animal predation, or a spray event? Because of the foraging nature of bees known as floral fidelity, one hive could be exposed to spray in a field while the other hive, working a different floral source, had no spray problems. If you cannot explain the differences, it may be time to consult an expert.

If you have only one hive and no opportunity for comparison, I highly recommend you attend one (or more) of the open apiary events throughout our area. Steve and I began open teaching apiary sessions here at the farm last year and have been very pleased with the feedback. This month, we handed off the hive tool to one of the participants. 'Open this hive and tell us what you see'. Although a bit reluctant at first, one new beekeeper asked for the opportunity for a second hive to examine. We were happy to oblige. Nearly every student/beekeeper took the hive tool and demonstrated how to smoke the hive, remove frames, and we all discussed what was happening in the hive. Because of our own hive demands, we haven't been able to help with the NEKBA hives at Pendleton Market but the reports I am hearing from members is very encouraging. A LOT of valuable, hands-on learning is happening. Our Open Teaching Apiaries are, in part, sponsored by the program, Great Plains Master Beekeeping (GPMB), through University of Nebraska, Lincoln. It is the vision of Dr. Judy Wu-Smart and focuses on educating about bees from Interest through Apprentice, Journeyman, and Master beekeeper training level. Enrolling in GPMB is free. If you progress through the instruction, there is a fee for the testing that supports the costs of the mechanics of the program. GPMB is governed by a volunteer force of beekeepers from across the Midwest. These are folks dedicated to bee education!

I hope you all got some much-needed rain without too much un-needed wind. Check out the NEKBA Facebook page. We have people post the beautiful, crazy, confusing, and rewarding elements of beekeeping.

The pictures of bees on NE Kansas flowers have been spectacular. Thank you to everyone who posts their pics for us all to enjoy. **Becky Tipton**

**SUBSCRIBE TO A MONTHLY BEE MAGAZINE. STAY INFORMED.**

[Bee Culture Magazine \(link\)](#)    [American Bee Journal \(link\)](#)

Use the links to subscribe directly...annual subscription rates under \$6 per month for both! This is fantastic information right at your fingertips. As part of your beekeeping experience, it's important to be up-to-date with the trends in bee biology, honey processing, the industry, and much more!



**ASK QUINBY & REMI**

**Dear Quinby and Remi:** I just cannot see eggs! Do you have any suggestions?

**Quinby and Remi answer:** We find that it is easiest if you turn the frame upside down so that the top bar of the frame is down, and the bottom of the frame is up. Then get the frame so that the sun is over your shoulder, but you aren't looking into your shadow. Once you have the sun shining in the cells it is easier to see the eggs. Look for an area on the frame with little bitty larvae and near there you should see eggs—that is if it isn't cloudy, or grey out! It's hard to see them. Some people use a headlamp or

flashlight. Some use those cheaters or reading glasses, even over your regular glasses. Some people take pictures, and they use the "spread" method to see eggs. The secret is to know where to look on the frame and you'll be the most successful. Attending the club open apiaries can be helpful. Leaders work hard to make sure you can see eggs.

**Dear Quinby and Remi:** The bees are building this comb between the top bars of the frames and the bottom bars of the hive body above them. What should I do? Also, the bees are building "crazy" comb, any ideas for correcting this?

**Quinby and Remi answer:** The comb between the hive bodies is called burr comb. Some people keep a coffee can or container to collect this comb as you scrap it off. Before scrapping it off, take a quick look at it. Usually, it is drone comb, comb that the varroa mites prefer. Look to see if you see varroa mites before they head for the dark. It is a good way to tell what your mite load is.

Crazy comb occurs when you have a new foundation in your hive and the frames are not pushed together tightly. If you can keep your frames pushed tightly together and you feed sugar syrup, you are less likely to have this occur. If you get a comb that is not attached to your foundation or is not going in the right direction, it is best to scrape it off and let the bees start it over. It is harder to correct it later, as more time passes.

**Quinby and Remi would love to answer your questions. Contact them by emailing their owner at [heartlandhoneyks@gmail.com](mailto:heartlandhoneyks@gmail.com).**

**Funday Volunteers Needed**

We are looking for volunteers to help serve lunch and ice cream, and to help set up Friday night from 6-8 at the fairgrounds. We can set up tables and chairs Friday night. We would like volunteers to introduce speakers in all the buildings. Each job is broken down into short time slots so that you do not miss the Funday yourself. We also need someone to sell raffle tickets for the quilt, and volunteers to help sell T-shirts and hats. If you would like to volunteer, please email Joli at [heartlandhoneyks@gmail.com](mailto:heartlandhoneyks@gmail.com) or text or call 913-593-3562. We'll have a clipboard at the May meeting for sign-up too. We will also need a few laptop computers at Funday.



# NEKBA 2024 FUNDAY EXPO

**Saturday, June 1st Douglas County Fairgrounds, 2110 Harper Lawrence KS**

**Speaker Presentations, Swarm Demo, Open Apiary, Value-Added Talks, & Honey Ice Cream!**

**Guest Speakers:  
Dr. Jennifer Tsuruda  
Dr. Judy Wu-Smart  
Dr. Autumn Smart  
Blake Shook  
Rogan Tokach  
and More!**

## Saturday Dinner & Program

For an additional fee (\$20) we will have an optional catered dinner from Stanley James BBQ. Rogan Tokach will present “(Bee) Suits and Thai: Beekeeping Lessons Learned in Thailand”.

## Funday Vendors- Contact for Pre-Orders

Hill Co will be coming! Here is a discount link for the Funday, <https://hillcobees.com/discount/NEKBA>. Use the code "NEKBA" at checkout.

This is only for pre-orders that HillCo will bring. This is for pickup only.

Contact Dadant at 877-732-3268 or [jradars@dadant.com](mailto:jradars@dadant.com)

Beekeepers.com at 913-681-5777 or [info@beekeepers.com](mailto:info@beekeepers.com)

Cedar Ridge Bees 785-581-4216 or [www.cedarridgebees.com](http://www.cedarridgebees.com)

Apimaye 480-648-8385 [apimaye-usa.com](http://apimaye-usa.com)

Hive Butler 317-896-0456 [www.hivebutler.com](http://www.hivebutler.com)

Next to Nature Farm 785-491-1978 [www.nexttonaturefarm.com](http://www.nexttonaturefarm.com)



## Hotel Arrangements

A group rate: The Country Inn and Suites, 2176 E 23rd, Lawrence KS 66046. 785-727-1825 Group: Heartland Honey Group #ZZ58M4



Register here at [www.NEKBA.ORG](http://www.NEKBA.ORG)  
\$55.00 fee

QUESTIONS?  
Funday: Call Joli @ 913-593-3562  
Registration: Call Robert @ 913-481-3504

# Northeastern Kansas Beekeepers' Association Bee Funday

## An educational experience for all skill levels of beekeeping

Saturday, June 1st, 2024

Douglas County Fairgrounds, 2110 Harper St., Lawrence, KS

Registration: 7:30-8:30am –Program: 8:30-5:30pm BBQ Dinner 5:30 – 7:30pm

Fee includes Lunch, Beverages, Honey Ice Cream and a Full Day of Fun! Bring your hat and veil or bee suit -we'll have workshops at bee hives! Cost: \$55.00 per person for those preregistered, \$65 after May 28 and at the door. Children aged 5 and under free, ages 6-18 \$20.00 for those pre-registered. \$30 at the door. Pre-Register by May 28th to be in a drawing to get your individual registration re-funded in a drawing. Please join us for a BBQ after-event dinner. The additional dinner fee is \$20. To register via PayPal online, please go to [www.NEKBA.org](http://www.NEKBA.org). Contact Jo Patrick at (913) 768-1961 or [heartlandhoneyks@gmail.com](mailto:heartlandhoneyks@gmail.com) for more information.

### Guest Speakers:

**Dr. Jennifer Tsuruda** Jennifer is an Assistant Professor and Apiculture Specialist at the University of Tennessee, Knoxville. She is responsible for maintaining and safeguarding the bees on campus. UT Knoxville was recently named a “bee campus” and this in great part due to the hard work of Dr. Tsuruda and her counterparts.

**Dr. Judy Wu-Smart** is the Extension and Research Entomologist at the University of Nebraska-Lincoln, Department of Entomology. The UNL, Bee Lab pursues research questions and extension programs focused on stressors impacting pollinator health in both managed and wild bee communities. We have certainly appreciated Dr. Wu-Smart presentations at past Fundays, and we are most fortunate that she has accepted our invitation to share with us again.

**Dr. Autumn Smart**, a published author, performed her graduate research at the University of Minnesota, Department of Entomology. She is currently a wildlife biologist at the USGS Northern Prairie Wildlife Research Center.

**Blake Shook** Blake, along with his parents, Lyndon and Tammy Shook, founded The Bee Supply in 2016. Blake has been keeping bees since he was a young teen and has grown his commercial beekeeping business to thousands of hives. Blake serves on the National Honey Board to help promote honey in the USA, and the American Beekeeping Federation (ABF) to promote beekeeping.

**Rogan Tokach** Rogan, a graduate student in entomology, is focused on helping bees through his research. His work includes studies through the UNL Bee Lab. Tokach began doing research and participating in 4-H fairs. He sold jars of honey and donated the profits, while earning scholarships. He earned an undergraduate degree at Kansas State University and a master's in entomology at the University of Nebraska–Lincoln. Tokach is currently a Ph.D. student at Auburn University College of Agriculture in Auburn, Alabama.

### Funday Silent Auction June 1, 2024

The 2024 Funday Expo will have a silent auction this year (we do this every year)! If you have any items you would like to donate please bring them with you. We really appreciate any donations. While “bee themed” items sell well, we thought that we would also branch out and try some big-ticket items. If any of you have access to items that you think might sell well feel free to reach out to our auction chairperson, Jo Patrick, 913-913-645-8947 or [brian-patrick@sbcglobal.net](mailto:brian-patrick@sbcglobal.net). We've received 4 Royals tickets so far! We are looking for things



along those lines. We will have 2 hives with live bees on the silent auction to be picked up later! Be thinking about what you can bring. Money from the silent auction will be used for our youth scholarship program (75%), and for start-up for future Fundays (25%). Vendor donations are still coming in. So far, an Apimaye 7 frame insulated hive has been donated by the vendors.

### **Funday Vendor line-up**

We are fortunate this year to have many vendors signing up to join us at Funday. You will need to attend the event to visit them and pick up items. Hillco is coming and offering a 10% discount on preordered items, use the code NEKBA at checkout. Beekeepers.com will be offering sale pricing on their plastic honey containers. Dadant, from Sioux City, will be attending. You can pre-order by calling 877-732-3268. Apimaye has confirmed that they will be in attendance, too. Hive Butler, from Indiana, will also have a booth. Cedar Ridge Bees, from Overbrook, will be there! Chad from Next to Nature Farm will have a booth with items that will be seriously discounted! We will have a great line-up of vendors!

### **Funday Sponsorships Offered!**

This year for our Funday, we are excited to offer a new NEKBA member sponsorship program. Since we have so many generous members, we decided to offer you a chance to support the club. We are asking for generous donors to help supplement the cost of the Funday.

If you have a business that you would like to put on our sponsor board and in our Funday Conference Program, we would love to do that. If you do not have a business but would like to have your name listed, we would like to do that as well, or you could choose to be anonymous. Please note that at the Drone and Queen Levels you can sit with one or more of our guest speakers at the Saturday night dinner. If you would like to have a vendor booth, we have a different sponsorship program for vendors.

#### **Member Sponsorships:**

Queen Level \$1000 4 registrations, lunch, dinner at a table w/one guest speakers! Plus 20 Quilt raffle tickets.  
Drone Level \$500 3 registrations, lunch, dinner at a table w/one guest speakers! Plus 15 Quilt raffle tickets.  
Worker Level \$250 2 registrations and lunch and dinner plus 10 Quilt raffle tickets.  
Honey Level \$150 1 registration and lunch and dinner plus 5 Quilt raffle tickets.

#### **Joli Winer, 2024 Funday Coordinator**



### **The NEKBA Beeyard**

The NEKBA Open Apiary equipment was funded with a grant from the Great Plains Master Beekeepers. This is a great program with many educational opportunities, many of which you may choose to take part in. At the open apiaries you can expect to go through hives to see all stages of brood, queens, and take part in assessing the hives and queens. A great deal of time

is also spent on using your smoker and hive tool and talking to participants about issues they are seeing in their hives. Bee suits are available and only NEKBA hive tools and smokers will be allowed in the apiary. The hives are located at Pendleton's Country Market, 1446 E 1850 Rd, Lawrence, KS 66046. These events are free, but we do ask that you sign up so that we know that you are coming. To sign up, use the sign-up genius link:

<https://www.signupgenius.com/go/20F0C48ADA82BABF49-48334714-look>

Saturday, May 4 @ 9 am  
Saturday, May 18 @ 9 am and 3 pm  
Monday, May 20 @ 5 pm  
Saturday, June 8 @ 9 am  
Monday, June 17 @ 5 pm  
Saturday, June 22 @ 9 am and 3 pm  
Saturday, July 6 @ 9 am

Saturday, July 20 @ 9 am  
Saturday, August 3 @ 9 am  
Sunday, August 18 @ 10 am Pull honey  
Saturday, September 16<sup>th</sup> @ 5 pm  
Saturday, October 16<sup>th</sup> @ 5pm

This year our yard at Pendleton's Country Market has expanded from 4 hives to 10! If you have not come to any of our teaching sessions, you should try to make it out there. There are clean porta potties available next to Pendleton's, a short walk to the bees. We have also added a storage shed. The bees are looking great, growing, filling out the new foundation plus the queens were all accepted. So thankful for a grant from the Great Plains Master Beekeepers group to make this possible for us. There is no better way to learn about beekeeping than going into a hive with another beekeeper.

### **Spring Hill - Heartland Honey Beeyard**

This excellent educational opportunity will be held monthly on the second Thursday of the month. Dates are May 9, June 13, July 11, August 8, and September 12 at 5:30 pm. These open apiaries offer an opportunity to go through hives with another beekeeper- we look for eggs, larva, and queens. A great deal of time is also spent on using your smoker and hive tool and talking to participants about issues they are seeing in their hives. Bee suits are available and only NEKBA hive tools and smokers can be used in the apiary. The hives are located at Heartland Honey at the home of Joli Winer and Cecil Sweeney at 19201 S Clare Rd Spring Hill KS 913-593-3562 call or text or email [heartlandhoneyks@gmail.com](mailto:heartlandhoneyks@gmail.com) so we know that you are coming.

### **Tips for May**

- Open apiaries are a great way to see a hive, but also a great comparison for how your hives are doing.
- Didn't have time to read all the bee books this winter, join the Facebook group and post questions and pictures.
- Established hives and strong hives will need supered this month!
- You still have a little time to build a colony before the honey flow is over.
- Funday is a great time and place to learn and ask questions, be sure to sign up.
- Wash with a good antibacterial soap at times, some soaps smell good but don't knock down the natural flora growing on our skin. A bee sting or bug bite can sometimes give these natural skin bacteria a place to grow inside you.



### **Military/Veterans Apprentice Program**

I am Buck Bradley. I will be continuing the excellent work that Andy Nowachek and his team have done over the last few years. I was born and raised in Ottawa, Kansas. After a 21-year career in the Marine Corps, I recently returned home from North Carolina and am now settled in the Baldwin City area. I have been keeping bees for

the last several years and had up to 25 hives before moving back home.

In following newsletters, I will share more information on the NEKBA Military/Veterans Apprentice program and the connection between veterans and beekeeping that dates to the end of World War I.

I hope everyone had a good holiday season and that you have your bee equipment ready for Spring.

**Buck Bradley, Military/Veteran Appr. Liaison**



### **Honey Plants**

Moisture is a key requirement for nectar production. The rain NE KS received at the end of April will make a significant difference in nectar secretion and honey production. Other factors that can affect nectar secretion include soil quality, temperature ranges, time of day, age of blooms, and solar radiation. Honey bee foragers are affected by temperature too. That is one of the

reasons for placing colonies in full sunlight with entrances facing towards the South or East. We want our bees to warm up quickly on cool mornings so that they can get to work collecting nectar and pollen.

Some garden crops can be affected by the time of day and temperature. Blooms, such as melons, need pollination early in the day before noon and temperatures become too warm. Squash and pumpkin blooms will open before daybreak and close around noon. Honey bees typically visit these blooms between 7 a.m. and 10:30 a.m. With these crops, a bloom not pollinated during this time frame will wither and fail to produce any fruit. To learn more about crop pollination visit

<https://www.ars.usda.gov/ARUserFiles/20220500/OnlinePollinationHandbook.pdf> This book is out of print, but available online for free. Keith Delaplane wrote a similar book, but he admitted to me, when he spoke to our group a few years ago, that S.E. McGregor's book *Insect Pollination of Agricultural Crops*, published in 1976, was the gold standard.

The first of our clovers to bloom is White Dutch Clover. Typically, it begins blooming in early May but recently began on April 25th. Looking back at my records of 2020, my location in Olathe, received periodic timely rainfall while the White Dutch Clover was in bloom. This enabled the clover to continue blooming and producing nectar much longer than in past years. The clover began producing blooms on 4/27/20. I observed Honey bees continuing to work White Dutch Clover periodically from 5/22 through 7/5. I made a note that it finally dried up on 7/11/20. 2020 was not a typical year, but it revealed the potential of well-timed rainfall, and the positive effect moisture can have on nectar production.

Another honey maker is Yellow Sweet clover. It is easily spotted along roads and highways where it has escaped from tilled farm fields. This legume has a substantial impact on our honey production. Sweet clover has a sugar content of 52% sugar and 48% water. We know that honey bees will seek and forage from plants offering the highest sugar content available. So sweet clovers are a favored source for honey bees and is one of our best nectar producers in NE KS. The numbers vary but a colony located near yellow sweet clover can produce as much as two hundred pounds of honey. Blooming can begin the second week or middle of May. That is about two weeks after White Dutch Clover begins blooming. Sweet clover pollen is yellow.

On the heels of Yellow Sweet clover will be White Sweet Clover, again about two weeks later. The characteristics of white and yellow sweet clovers are similar. The genus *Melilotus* comes from *Meli*, which is the Greek word for honey, and *lotus* which refers to a 'clover-like plant.'

Many of our prized nectar sources come in the form of undesirable, weedy, or invasive plants. The Black Locust tree, even though it is native, falls into those categories. Black Locust produces very light-colored honey. Seasoned beekeepers will plan around the Black Locust bloom and harvest those supers filled with the almost clear, light honey that brings a premium price. Black Locust can be easy to spot when in bloom, especially along highways. The tree spreads by sucker shoots so there are often large numbers in one location. The scent from the creamy white pendulous clusters of flowers is very pleasant and very showy. This tree usually blooms during the first or second week of May. Thorns can be present especially on young trees and new growth.

The Catalpa tree is not a significant pollen producer but can provide nectar. Depending on location and competition from other blooming plants, this native tree may be beneficial. Catalpa is often found in older residential neighborhoods. The leaves are large, heart shaped, dense, and graceful. The clusters of white blooms turn into long seed pods that can be messy when they fall. The Catalpa blooms in late May or early June. Privet is commonly grown in the form of a hedge which is perfect for honey bee foraging. Honey bees prefer to work large masses of the same plant species, so this is a good bloom arrangement for them. It can be found in older neighborhoods. Newer housing trends have switched to fencing which is easier to maintain. This gem blooms 7-14 days, produces yellowish-green pollen, and abundant nectar.



In rural areas, Elderberry can be a useful source of pollen. Elderberry blooms at the end of May with blooms lasting 5-10 days. The blooms do produce a little nectar, but honey bees are more likely to visit it for the yellowish-green pollen.

I hope you join us for Funday, June 1, 2024. Autumn Smart, University of Nebraska-Lincoln, will be giving a presentation on Honey Plants. It will be a good opportunity to learn more about honey bee foraging. Several years ago, Dr. Smart gave a similar presentation at Funday. Because of the positive responses, Funday planners asked her to speak again on this subject. **Jo Patrick, Honey Plants Chairman**



### **The Kansas Honey Producers, Third Thursday, Extracting More \$\$\$ from Your Hives.**

The Kansas Honey Producers Association- 3rd Thursday, *Extracting More Money From your Hives*, is at 7pm Central., Thursday, May 16th. John Speckman presents, "Collecting, Cleaning and Selling Pollen". John has been a beekeeper since he was about 12 years old-more than 60 years ago! He is a great beekeeper, raises queens, sells honey, and collects pollen. He'll share his tips with us.

To register for the meeting and to get the link, go to our website at [www.kansashoneyproducers.org](http://www.kansashoneyproducers.org) and click on the Extracting More \$\$\$ button-it will send you to a zoom program to register, and you will immediately get the zoom link in your email. If you have registered before you still may have to register again to get the link.

If you have something that you would like to share with the group or have an idea for a future program, please call or text Joli at 913-593-3562 or email [heartlandhoneyks@gmail.com](mailto:heartlandhoneyks@gmail.com).



### **Quilt Raffle**

This year, we again have a beautiful quilt for our quilt raffle. This quilt was donated by Jenny Latendresse, owner of the L'il Red Hen Quilt Shop at 7 South Agate St., Paola KS. She has donated several quilts over the years to be used to help fund both the Youth Scholarship program and our Apprenticeship for Veterans and Active-Duty Service members. Tickets are \$5 each or 5 for \$20. The drawing will be held at our Funday Expo on Saturday, June 1st. Tickets will be available at all our in-person events and meetings plus at the Funday.

### **Funday Volunteers Needed**

We would love for some to volunteer to help us.

We have made all the tasks so that no one tied up all day (except for some of us). Please volunteer in advance and let Joli know. Text 913-593-3562 or email Joli ([heartlandhoneyks@gmail.com](mailto:heartlandhoneyks@gmail.com))! If you have anything to donate for the silent auction, please start collecting items and bring them.

1. We need help Friday night (6:00-7:00pm) to set up chairs in all buildings.
2. We need help with giving out name tags at registration Saturday morning.
3. We need someone to blow the horn between sessions.
4. We need help Saturday morning to put out signs and sometimes direct traffic.
5. We usually need help with the PowerPoint projectors and loading in guest speaker programs-and making sure the microphone is working and has batteries.
6. We may need help setting up the vendor area- which will be a tent this year.
7. We need several to help set up the silent auction and assist in collecting at the end.

# Northeastern Kansas Beekeepers' Bee Funday Registration Form

## 2024 Bee FunDay, Saturday June 1<sup>st</sup>, 2024

You can register and pay online at [www.nekba.org](http://www.nekba.org) . Your contact information will be provided to the club through PayPal—please list all participants in the PayPal notes section on-line.

Name \_\_\_\_\_

Address \_\_\_\_\_

City, State, Zip+4 \_\_\_\_\_

Phone # \_\_\_\_\_

Email address \_\_\_\_\_@\_\_\_\_\_

I would like to be a member--Club Membership ½ year \$12.50 (membership not required) \_\_\_\_\_

### Registration for the Bee Funday:

**Adults \$55 per person (\$65.00 if paid after May 28<sup>th</sup>, 2024)** \_\_\_\_\_

**Yes! Include me in the after-day-event BBQ Dinner \$20 per person** \_\_\_\_\_

*Registration includes admission to the Funday, Morning snack of Wheatfield’s breads, honey butter and a selection of creamed honey, lunch, drinks and homemade honey ice cream.*

*If you need an alternative meal (vegetarian for lunch - how many?)* \_\_\_\_\_

Youth (6-18) \$20.00 (\$30.00 if paid after May 28<sup>th</sup>, 2024) \_\_\_\_\_

Youth 5 and under free

Program Donation \_\_\_\_\_

**Total \$** \_\_\_\_\_

**Please make your check out to “Northeast KS Beekeepers or NEKBA” or register via PayPal online.**

**If paying by check, please mail to: Robert Burns, 7601 W 54th Ter., Shawnee Mission KS 66202**

**Email: [rburnshoney@gmail.com](mailto:rburnshoney@gmail.com)**

**Names of those attending for name tags:**

\_\_\_\_\_  
\_\_\_\_\_

We appreciate early pre-registrations so much that at the end of the Bee FunDay we will hold a drawing of all pre-registered people and one person gets his/her registration fee back!

**Need More Info? Please contact Joli Winer at (913) 768-4961 or [heartlandhoneyks@gmail.com](mailto:heartlandhoneyks@gmail.com)**

**Receipts are sent to those made via PayPal.**

To make this wonderful, fantastic, educational, inspirational Funday happen, we need a few volunteers.

- Friday night set-up. Meet at the Douglas Co. Fairgrounds about 6:00 PM
- Saturday AM set-up. Meet at Douglas Co Fairgrounds around 6:30 AM
- Tech people Saturday AM set up sound, projectors, computers
- Computers for presenters. Apple or PC
- Set up Bread Snack
- Drink refills. We need 6 people through the day.
- Lunch help—set up/clean up (just help the caterer).
- Building support: Our speakers need to have microphones on and PowerPoints loaded—they need help getting started. go wherever they want to go. Building 21, Dreher North & Kitchen, Flory East and West, Outdoor stage.
- Restroom check— Check for problems, paper, etc. We need both a drone and a queen for this job (man and woman) please.
- Clean-up crew—many hands make light work.
- Chair stacking, table folding, trash hauling, floor sweeping. If these jobs aren’t done correctly, we lose our security deposit. We need to leave it all as we found it!



## Have you registered for Fun Day?

NEKBA's Fun Day, on Saturday, June 1, is a great opportunity for you to hear guest speakers that are some of the best-known beekeepers, biologists, researchers, and educators in the country. This all-day event will be held at the Douglas County Fairgrounds and is for beekeepers of all skill levels and ages. There will be presentations, hands on learning opportunities, demonstrations, and a swarm demonstration. Stay with us for the evening BBQ dinner with our guest speakers at the close of Funday. To register, look for the form in this newsletter or go online to [www.nekba.org](http://www.nekba.org). There is a discount for registering prior to May 29. Hope to see you there!

## BBQ Dinner

We have added a BBQ dinner to the Fun Day event. The BBQ will be at the close of the day, June 1, 2024, at approximately 5:30 p.m. It will be a final opportunity to meet and ask questions of our guest speakers or to connect with fellow NEKBA members. Imagine getting the opportunity to ask Jennifer, Judy, Autumn, Blake, Rogan and others about their work and research! The cost is \$20 per person, to be paid in advance. Look for the form on our web page or in this newsletter. The meal will be catered and served by *Stanley James Smokehouse BBQ*.

## About the Event: How did it come about???

The name "Bee FunDay" came about in the early 1990's from hosting these small early summer bee events at a local farm. Members of the association got together for the event to have fun and expand their learning from just a monthly meeting. The event has grown in numbers over the years. It has always been a way for members to bond in addition to learning other things about beekeeping that might not be covered in a monthly educational meeting. In 2019, we had over 300 in attendance. Join us at the Douglas County Fairgrounds.

**The very first Bee Funday event was held on a Sunday, June 5th, 1994**, at the grounds of the Agricultural Hall of Fame in Bonner Spring, KS. The next was held at the home of Joli Winer and Cecil Sweeney. The association held its annual Watermelon Feed & Honey Judging Contest in the month of September 1994.

# Northeastern Kansas Beekeepers' Association Bee Funday

**An educational experience for all skill levels of beekeeping**

Saturday, June 1<sup>st</sup>, 2024

Douglas County Fairgrounds, 2110 Harper St., Lawrence, KS

Registration: 7:30-8:30am –Program: 8:30-5:30pm BBQ Dinner 5:30 – 7:30pm

## NORTHEASTERN KS BEEKEEPERS' ASSOC. 2024 MEMBERSHIP APPLICATION

NAME \_\_\_\_\_  
ADDRESS \_\_\_\_\_  
CITY \_\_\_\_\_ STATE \_\_\_\_\_ ZIP+4 \_\_\_\_\_  
PHONE \_\_\_\_\_ Email Address \_\_\_\_\_  
I would like to receive the newsletter, *The Buzzer*, by email Yes \_\_\_\_\_ No \_\_\_\_\_

Membership Northeastern KS Beekeepers per year (July-Dec. \$12.50)	\$25.00	_____
Additional family members wanting voting rights \$1.00 per person	\$1.00	_____
Additional family member's name _____ (Youth Membership (18 years of age or under)	\$12.50	_____
Membership for Kansas Honey Producers Association	\$15.00	_____
American Bee Journal (discounted rate through association)	1 year \$29.75	_____
Bee Culture Magazine (or subscribe online at <a href="http://www.BeeCulture.com">www.BeeCulture.com</a> )	1 year \$34.00	_____
Scholarship / Military/Veteran's Appr. Donation		_____
	<b>Total</b>	_____

**Make checks payable to: NEKBA or Northeastern Kansas Beekeepers Assn.**

Mail to: Robert Burns, 7601 W 54<sup>th</sup> Terr., Shawnee Mission, KS 66202 ph. 913-481-3504, [rburnshoney@gmail.com](mailto:rburnshoney@gmail.com)

**You may join, re-new, register, donate and pay online at [www.nekba.org](http://www.nekba.org)**

### MENTORING-SWEET PRAIRIE HONEY

Need help with your hives? -Spring inspections, installing packages, making splits, queen evaluation, diagnosis of pests and diseases, mite monitoring and treatment, etc. I can help you with your beekeeping needs! I am a certified master beekeeper with 30+ years of beekeeping experience. I will leave you with a written course of action after our session at your hives. Call or text 913-768-4961 or email Kristi Sanderson at [sandersonk09@gmail.com](mailto:sandersonk09@gmail.com) for pricing and appointment times.

### BEEKEEPERS.COM

[Beekeepers.com](http://Beekeepers.com) (Jordy's Honey Company) in Lenexa, KS. Beekeepers.com is your only local full-service beekeeping store. We carry a full line of Beekeeping Supplies, Protective Clothing, Bottles, Bee Packages, Nucs and Queens. Visit our website [Beekeepers.com](http://Beekeepers.com), to view our entire line of beekeeping supplies. You can also shop in-person at our store in Lenexa. We ship queens directly to YOU! Order at [QueenBees.com](http://QueenBees.com). Queens available March - October. Our hours are Monday-Friday 9:00-4:00, Saturday 9:00-12:00. You can find our honey at The Overland Park Farmers Market. **Robert Hughes**, 14054 W 107<sup>th</sup> St, Lenexa, KS 66215, 913-681-5777 or [email Info@Beekeepers.com](mailto:email Info@Beekeepers.com)

### COTTIN'S HARDWARE & RENTAL

Cottin's stocks a full line of beekeeping equipment year-round including items manufactured by Harvest Lane Honey, Little Giant, and Bug Baffler. Products include hives, supers, frames, foundations, extractors, tools, and protective apparel. We also stock a full line of Home Brewing Mead Making supplies. Located in Lawrence, KS at 1832 Massachusetts Street (South of Dillon's). We are open Monday - Friday 7:30 am - 6:00 pm, Saturday 8:00 am - 5:00 pm, and Sunday 10:00 am - 5:00 pm. You can follow us on Facebook, Instagram and Twitter. Call us at 785-843-2981 or email us at [hardware@sunflower.com](mailto:hardware@sunflower.com).

## CB'S HONEY

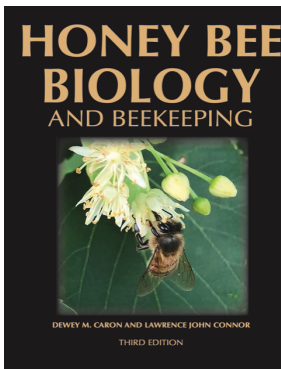
CB's Honey offers pure raw Kansas honey available in 5 gal buckets. Grafted queens and queen cells, and a limited number of nucs/packages. [CB's Honey | Facebook](#). Located just SE of Topeka. 4521 SE 61<sup>st</sup> Street, Berryton, KS 66409. Call or text Cheryl Burkhead at 785-224-9077 or [cherylbhoney@gmail.com](mailto:cherylbhoney@gmail.com)

## CEDAR RIDGE BEES

5 Frame Nucs for Sale. We are your local Premier Bee Products Dealer specializing in plastic foundation made entirely in the U.S.A. We sell bucket feeders and other bee equipment. Call or text Philip Knaus at 785-581-4216 or contact us at [cedarridgebeehives@gmail.com](mailto:cedarridgebeehives@gmail.com) - Check out our bees and products at [www.cedarridgebees.com](http://www.cedarridgebees.com) Cedar Ridge Bees 585 N 500 Rd, Overbrook, KS 66524.

## T CREEK BEES AND HONEY – Tecumseh/Berryton, KS

Tecumseh Creek winds its way through the home yard lending its name to the brand. Located between Lawrence and Topeka, T Creek offers 5-frame nucs, online honey sales, custom honey packing, wholesale delivery to the Topeka / Lawrence area, 5-gallon buckets of honey, and drop-shipping wholesale service to rural grocery stores and agritourism destinations. Visit [www.tcreekbees.com](http://www.tcreekbees.com) Email: [tcreekbees@gmail.com](mailto:tcreekbees@gmail.com) or find the bees on Facebook. Order 2024 5-frame nucs by visiting the website and completing the nuc order form. Owner: Tim Urich. LLC in the State of Kansas and licensed by Kansas Dept of Ag.



**Honey Bee Biology and Beekeeping, Third Edition, Dewey M. Caron and Lawrence John Connor, \$90 postage included.** *This book should stay on the dashboard of every beekeeper's truck. It's that good, and that necessary. Kim Flottum, Bee Culture.* This comprehensive textbook easily replaces many beginner books while adding comprehensive details of bee biology essential to becoming a successful beekeeper and student of the honey bee. First released in 1999, *Honey Bee Biology and Beekeeping* is widely accepted as a major textbook of Apiculture (beekeeping). Beekeepers and bee clubs use it to teach other beekeepers. Universities use it to teach college students bee biology and beekeeping. It concentrates on the 'why', 'how' and 'when' of beekeeping. It explains bee and beekeeping basics in a manner meaningful to people who lack an extensive background in biology. Yet it is not over-simplified, and provides a meaningful source of beekeeping information for the informed beekeeper. The Third Edition has been carefully edited, updated and expanded to 480 pages. New chapters have been added, as have colorful new graphics and photographs. The Glossary has also been expanded. **Wicwas Press LLC Kalamazoo, MI 49001 - [www.wicwas.com](http://www.wicwas.com)**

The Association does not endorse nor evaluate the advertisements, products, or services offered in the Buzzer.



Northeastern Kansas Beekeepers Association  
Robert Burns, Treasurer  
7601 W 54<sup>th</sup> Terr  
Shawnee Mission, KS 66202-1129

## Address Service Requested

### Meeting

Monday, May 20, 2024

### *The Northeastern Kansas Beekeepers' Association*

Membership is open to anyone interested in bees or bee culture. Dues are \$25.00 per calendar year (December 31-December 31) for the first in the family joining. Those joining in July or later in the year may pay \$12.50 for ½ year. Additional members of a family wanting voting privileges shall be assessed dues at \$1.00 per year. Youth memberships (18 years of age and younger) are \$12.50 per year. Please submit new memberships and renewals to the treasurer or on-line at [www.nekba.org](http://www.nekba.org).

*The Bee Buzzer* is the official publication of the Northeastern Kansas Beekeepers' Association, Inc. and is published monthly. Commercial ads are accepted in the newsletter for a fee; non-commercial ads by paid members are accepted & are free.

The library of the association is free to all members. Books may be checked out at the meetings and kept for a period of 30 days. The bee publications, *The American Bee Journal* and *Bee Culture* can be subscribed to through the treasurer or on-line. The *American Bee Journal* is offered at a discount through the Association only.

The Association meets each month, generally on the third Monday at 7:00 p.m. except during the months of January and July. This is a non-profit organization; elected officers serve without pay. Everyone is invited to attend the meetings. Check *The Bee Buzzer* or website at [www.nekba.org](http://www.nekba.org) each month for the actual date, time, and location. If the weather is bad, call an officer or check the website to find out if the meeting will be held or cancelled.

#### **2024 Officers**

President: <b>Cheryl Burkhead</b> , 4521 SE 61st St., Berryton, KS 66409 <a href="mailto:cbfritz@aol.com">cbfritz@aol.com</a>	785-224-9077
1st VP (Program Chair): <b>Matt Brandes</b> , 4741 Highway K 68, Wellsville, KS 66092 <a href="mailto:matthew@n523rv.com">matthew@n523rv.com</a>	913-706-3087
2nd VP (Librarian): <b>Michael Hewitt</b> , 9221 SE Berryton Rd, Berryton, KS 66409 <a href="mailto:garlicranch69@gmail.com">garlicranch69@gmail.com</a>	785-230-0827
3rd VP (Honey Plants): <b>Jo Patrick</b> , 611 E Sheridan St., Olathe, KS 66061 <a href="mailto:brian-patrick@sbcglobal.net">brian-patrick@sbcglobal.net</a>	913-645-8947
Secretary: <b>Elaine Ellenz</b> , 17650 W 113 <sup>th</sup> St., Olathe, KS 66061 <a href="mailto:elaineellenz@gmail.com">elaineellenz@gmail.com</a>	913-515-1607
Treasurer: <b>Robert Burns</b> , 7601 W 54 <sup>th</sup> Terr., Shawnee Mission, KS 66202 <a href="mailto:rburnshoney@gmail.com">rburnshoney@gmail.com</a>	913-481-3504
Youth Scholarship Chair: <b>Dale Spurlin</b> , 24964 160 <sup>th</sup> Ct., Leavenworth, KS 66048 <a href="mailto:LightedPathHoney@outlook.com">LightedPathHoney@outlook.com</a>	913-775-0997
Military/Veteran Appr. Liaison: <b>Buck Bradley</b> , 11 E 900 Rd., Baldwin City, KS 66006 <a href="mailto:buckusmc00@hotmail.com">buckusmc00@hotmail.com</a>	785-248-1005
Editor: <b>Tim Marshall</b> , 4736 Halsey St., Shawnee, KS 66216 <a href="mailto:flyinmonk@yahoo.com">flyinmonk@yahoo.com</a>	816-392-6854
Special Events Coordinators: (Classes): <b>Kristi Sanderson</b> , 1252 E Frontier Ln., Olathe, KS 66062 <a href="mailto:sandersonk09@gmail.com">sandersonk09@gmail.com</a> 4961	913-768-
(Funday): <b>Joli Winer</b> , 19201 S Clare Rd, Spring Hill, KS 66083 <a href="mailto:heartlandhoneyks@gmail.com">heartlandhoneyks@gmail.com</a>	913-593-3851
Webmaster: <b>Robert Burns</b> , 7601 W 54 <sup>th</sup> Terr., Shawnee Mission, KS 66202 <a href="mailto:rburnshoney@gmail.com">rburnshoney@gmail.com</a>	913-481-3504

Visit on-line at [www.nekba.org](http://www.nekba.org). Save time. Join, re-new, or register.