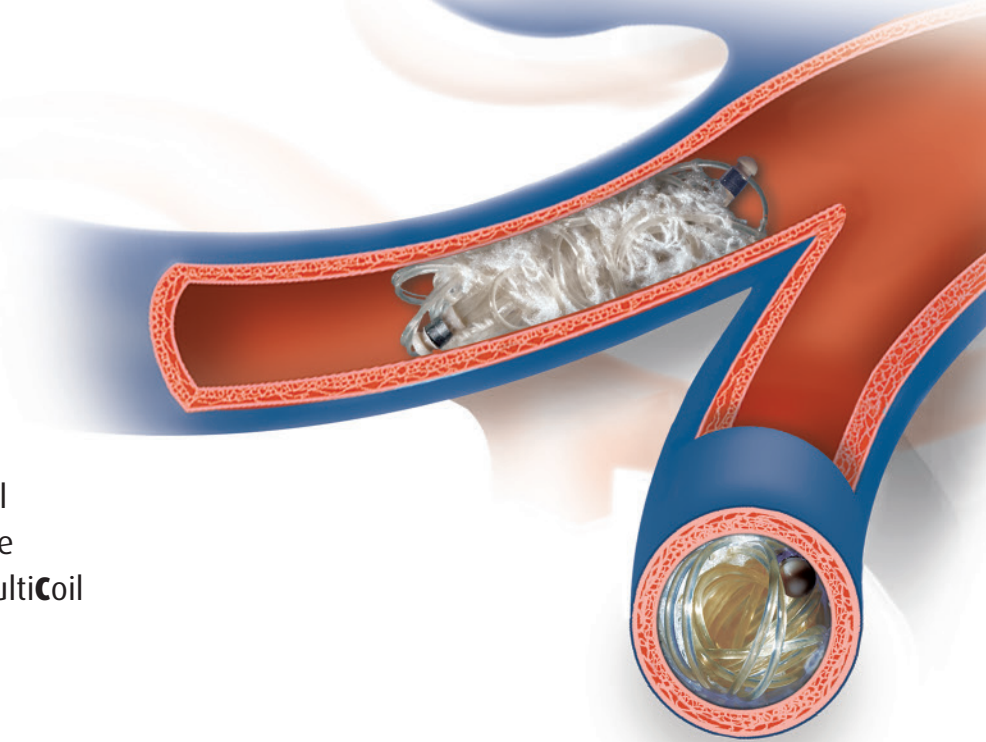


Medusa[®]

MULTICOIL



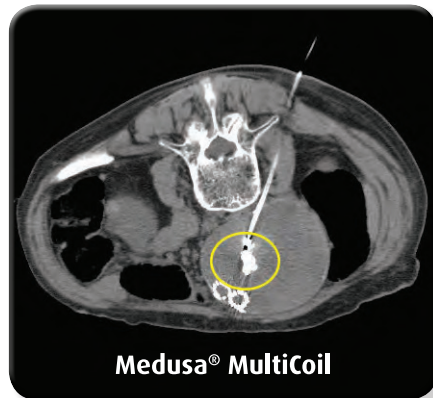
Precise Control - Proximal and distal detachment allows control where the coil pack is formed. The **Medusa[®] MultiCoil** is retractable and repositionable.

Simple Procedures -

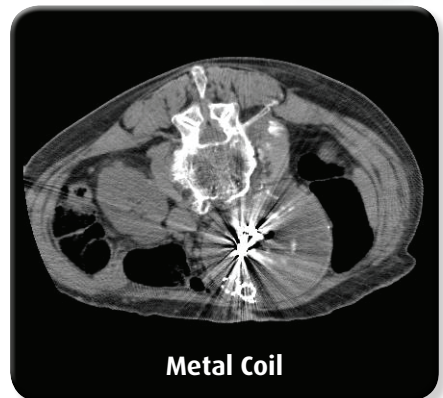
Single delivery sequence versus delivery of multiple coils.

Clear Imaging -

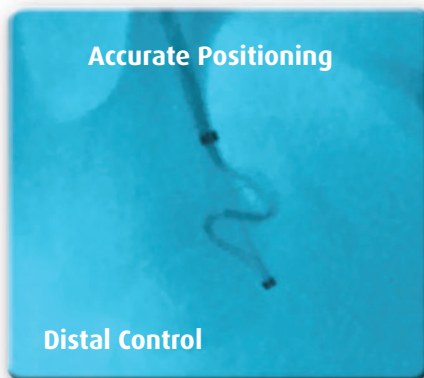
Minimal metal content reduces artifacts; follow up can be with a CT/MRI versus an angiogram.



Medusa[®] MultiCoil



Metal Coil



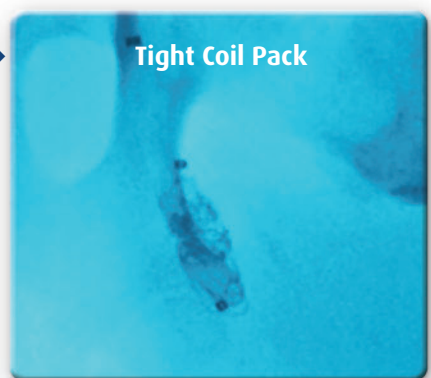
Accurate Positioning

Distal Control



Precise Delivery

Highly Visible



Tight Coil Pack

MMC Embolization in Three Simple Steps: Position, Deploy, Detach





Product Benefits:

- Single delivery sequence, for simple procedures
- Minimal CT artifact
- **Medusa® MultiCoil** is constructed from multiple 0.018" polymer coils and is highly trackable in tortuous anatomy
- Unique distal control with distal and proximal detachment

Configuration:

The **Medusa® MultiCoil** is supplied preloaded in a peelable introducer and is delivered to the target vessel using the pre-attached delivery system passing through a commercially available delivery sheath of the proper size.

Ordering Information:

Delivery Sheath Size Specifications

Model Number	Delivery Sheath Size	Required Sheath	Maximum Curl Diameter
MMC-122	5 Fr/1.9 mm (0.074") ID min x 90 cm	Terumo # RSC01, RSC03, RSC05, RSC07 Cook #G30009	10 mm
MMC074-45	5 Fr/1.9 mm (0.074") ID min x 45 cm	Terumo # 54-54501, 54-54503	10 mm

Customer Support: 844.870.5070 or customerservice@endoshape.com

Indications For Use:

The Medusa® MultiCoil is intended for arterial and venous embolizations in the peripheral vasculature. The product is intended for use by physicians trained and experienced in embolization techniques. Standard techniques for placement of vascular access sheaths, angiographic catheters, and guide wires should be employed.



www.endoshape.com

Rx Only

Contraindications: Use of the Medusa® Multi-Coil in the heart, in coronary vessels, in the central circulatory system, and in the neurovasculature is contraindicated.

Potential Adverse Events: Potential complications include, but are not limited to, death, stroke, hematoma at the site of entry, vessel perforation, migration or embolization of the device, ischemia, infarction, tissue necrosis, recanalization, infection, or pain.

Brief Summary: Please review the Instructions For Use prior to using these devices for a complete listing of indications, contraindications, warnings, precautions, potential adverse events and directions for use.