

ATTACHMENT A to City of Jonesboro Invitation for Bid

Details on Service Locations

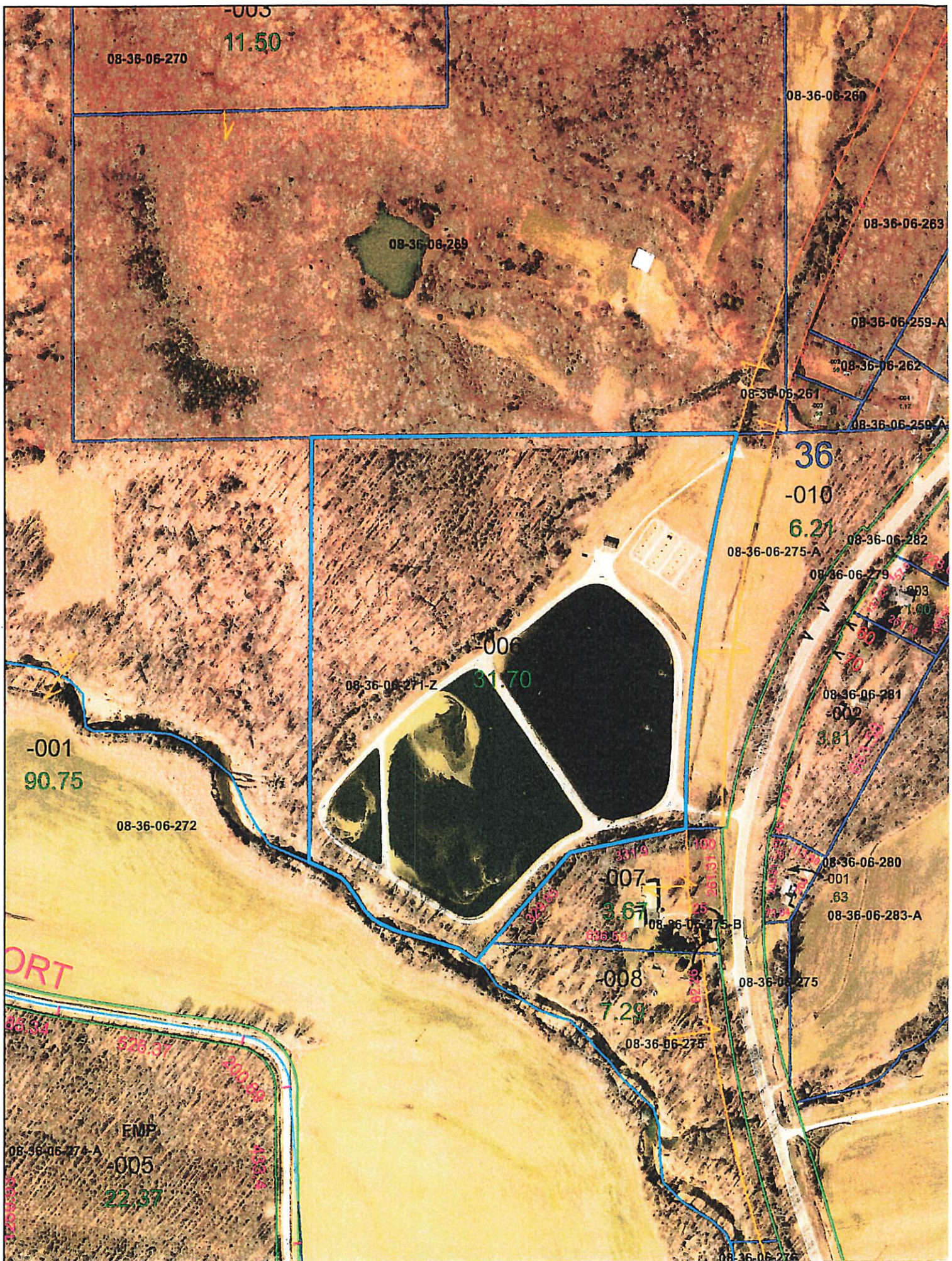
Location 1. Jonesboro City Square and right-of-ways off square.

1101 Public Square, Jonesboro, IL. More specific information will be provided at pre-bidder's conference

Location 2. City Wastewater Treatment Plant. See attached map. More specific information will be provided at pre-bidder's conference.

Location 3. City Cemetery. Bacon and Ashlar Streets. See attached map. More specific information will be provided at pre-bidder's conference.

Location 2



This is an aerial map of a residential development, likely in a suburban area. The map shows a grid of lots, each with a unique identifier (e.g., 08-25-06-102, 14-00-07-941). The lots are outlined in blue and red lines. The map includes several street names: 'S ORANGE' (vertical), 'BACON' (vertical), 'ASHLAR ST' (horizontal), and 'ASHLAR' (horizontal). A large area in the center is labeled 'U/I' (Under Investigation). The map also shows various annotations, including lot numbers, area measurements (e.g., 1.71, 1.50, 2.09), and other details like 'PL 08-25-253-012' and 'PL 08-25-253-018'. The map is oriented with North at the top.