

Since 1948

Exploring the wonderful world of beekeeping together

The Bee Buzzer

Monthly publication of the

Northeastern Kansas Beekeepers Association

VOLUME 50, NUMBER 2

EDITOR: JOLI WINER

FEBRUARY 1998

**General Meeting
and Program
Sunday, February 1st,
2:30 p.m.**

**309 Oak,
Bonner Springs, KS
Commercial State
Bank Building**

**"Spring Management"
Presented by
Wendell Ohmes**

1997 Beekeeper of the Year

Wendell, one of the areas best beekeepers, will be sharing his thoughts with us this Sunday on managing your hives through the spring. He will cover medicating your hives, evaluating them for requeening, requeening, swarm control by making divisions, feeding and more!

Come prepared to ask questions and to learn! Wendell has a great system for making divisions or "nucs". He is truly a very good beekeeper and a very organized speaker.

Meeting Location: Commercial State Bank, 309 Oak, Bonner Springs, KS. Take 32 Highway to Kump Street, turn right coming from the east or left coming from the west. Go up the hill to the rear parking lot on the left. If you are coming to Bonner on K32 West Kump is the first stop light you come to. The meeting is down stairs. There's no elevator.

New Members

We want to extend a welcome to Barbara Blaufuss from Emporia and Steve Knapp of KCKS!

Condolences:

Our sincere condolences to the family of member, Eugene Morris of Bashor, KS who passed away this week.

50th Year of the Northeastern Beekeepers Assn.?

We're pretty sure it is our 50th year! At least it's the 50th year of the newsletter! If you were around 50 years ago (and you'd be surprised how many of our members were) and you have some information on how the club got started or you have some documents or old newsletter from that time period please let the board know. The 50th year committee consists of Bob Dye, 722-0417, Rex Hubbard at 785-842-8656 and Richard Bean at 785-594-2694. If you have old newsletters please contact Joli Winer at 913-768-8967. The committee is in charge of planning a 50th year program. If you would like to be a committee member or help in any way contact a board member.

Old "Buzzers" Wanted:

No, I don't want old beekeepers or old bees -- Joli Winer, editor, would like to collect some old "Buzzer" newsletters. I have some in the 1980's. Contact her at 913-768-8967.

Wanted: Great Recipes

The board has decided to make an association recipe folder as a promotional tool for the club.

The deadline for submitting recipes is March 1st. This is our regular general meeting day. Becky Tipton is in charge of collecting recipes. Joli has agreed to type it and get it ready for the printer. If you have a great recipe or a thought about the layout of the folder contact Becky Tipton at 785-484-3710. If you would like to send a recipe to her the address is: 9491 X Rd., Meriden KS 66512.

WOW—January Meeting a Huge Success!

Were you there? Our program featuring Brian Sherriff and his daughter, Anji, from Cornwall England was a huge success. We had a joint meeting with the Midwestern Beekeepers and had right at 90 people! It was an excellent program.

Thank you, Vera for handling all of the treats.

Kansas Honey Producers Meeting will be held in Salina, KS on Friday and Saturday, March 13-14 at the Red Coach Inn. To make reservations call 1-800-332-0047 and mention the Kansas Honey Producers. The room rate is \$59.00+ tax for 1-4 people in a room. Make your reservation by March 1st.

Buzz Words by President, Frank Smith

It has been an interesting month for my family and me. The program with Mr. Sheriff was very good and gave a different aspect on the world of beekeeping. Also, very personal to my family was the death, this last week, a neighbor, friend and beekeeper.

My neighbor, Mr. George Dana, was 95 years young when he died. George did his beekeeping before the organization of our club. So, many of you probably didn't know of him. George was a farmer all of his life, and in his younger years, 1920 and 30's, was a beekeeper. It was his advice, tales, and support that made me become interested in bees. When I had my first swarm, I yelled to my wife, "GO GET GEORGE," when I wasn't quite sure how to get that great big plume of bees in the hive. In the short time I knew George (15 years), I seemed to need his help a lot.

George's beekeeping operation lasted a short duration, 20 years, as compared to his life, but apparently he was successful. He started bees as a way to earn money for the family, and he earned the

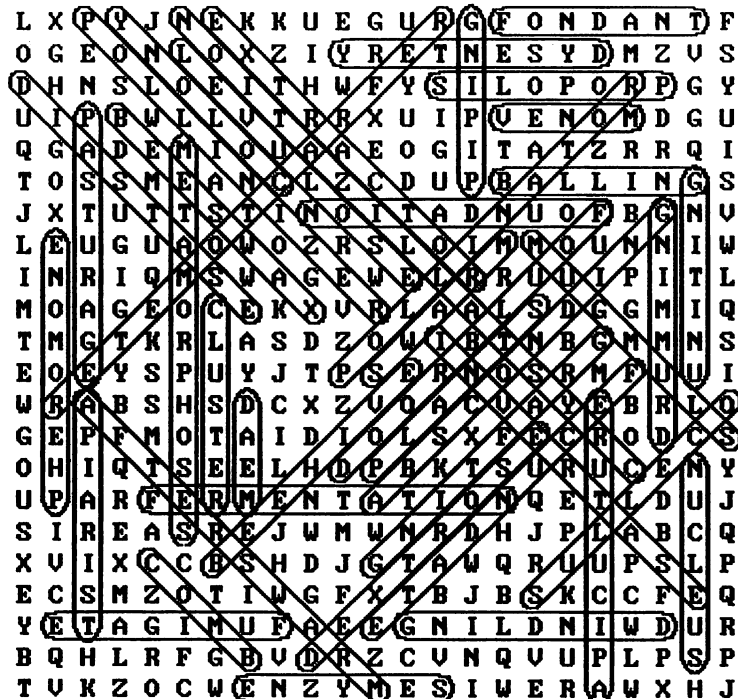
reputation as the local "honey man." There is even a story about honey being sold to the Kansas City bootleggers, but it's never been confirmed. He sold mostly cut comb, but later added liquid honey, bottled under his own label. In his time, the scourge of beekeeping was American Foul Brood and his operation went through a couple of devastating bouts with it. As I started beekeeping, he reminded me of this quite a few times and I will probably remember his lectures on maintenance for bee diseases forever. I believe that foul brood and his mother getting stung, made him opt for a more secure future on the family farm.

I believe when we are lucky enough to meet and smart enough to listen to people like George and Mr. Sheriff, that our lives are much richer. Isn't it amazing that a gentleman like Mr. Sheriff, started his career making women's bras, corsets and swim wear, would use that knowledge for a successful career in beekeeping and supplies. George loved bees, I'm sure he used his beekeeping experience to help him be a successful farmer.

Answers to the Word Search puzzle, designed by Ron Vivian. If you don't know the meaning of the words or how they relate to beekeeping look them up in "The ABC XYZ of Beekeeping" published by the A. I. Root Co.

BEEKEEPERS VOCABULARY

SOLUTION



Two Beekeeping Classes coming up:

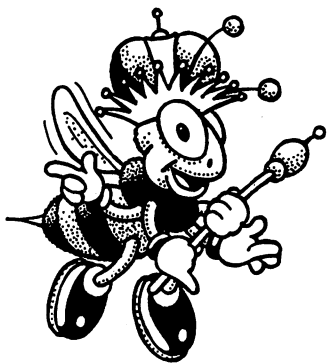
Cecil Sweeney and Joli Winer will be teaching two beekeeping classes this spring.

One class will be through Johnson County Park and Recreation beginning Monday nights from 7-9 p.m., February 2nd for 5 Monday nights. To register by phone call 913-831-3355. The cost is \$24.00.

The 2nd class will be held on Tuesdays in March for 5 Tuesdays, beginning March 3rd. It will be taught through Communiversity. The cost is \$14.00. To register through Communiversity call 816-235-1448.

Each class is from 7-9 p.m., and goes for 5 weeks. Each class also includes one optional day to be arranged to come out and work through some beehives for several hours. All registration is through either Communiversity or Johnson County Park and Rec. If you give them a credit card number it can be handled over the phone. Each class covers the basics of beekeeping.

Both classes will be taught at Mid-Con, 1465 N Winchester, Olathe KS 66061 For information about the classes call 768-8967. **To register you must call one of the numbers listed above.** We have nothing to do with the registration.



New Beekeeping Club Forming

Are you interested in being part of a new beekeeping club? Some folks in the southeastern part of the state (near Niotaze and Coffeyville) are planning an organizational meeting on Sunday, February 15th from 1-3 p.m. at the Country Kitchen Buffet at 105 W 11th in Coffeyville KS. If you are interested call Tim Tucker at 316-879-2926 to make a reservation. Tim is the one spearheading this effort so for more information call him!

In Honor of our 50th Anniversary: 16 Years Ago in the "Buzzer"

"Should You Let Colonies Rear Their Own Queens"

by Maynard Curtis

It is common practice among beekeepers to remove a queen or make up a queenless new colony and let the bees rear a new queen. In doing this, the beekeeper assumes that he is saving money, the price of a new breeder-reared queen, and that the bees can be trusted to make a good queen for themselves. After all, if bees can communicate, use a compass, determine the time of day, and select the best food source, why can't they be expected to make a good queen?

There are several reasons why you should not allow the bees to make their own queen if you want the best colony possible and one that is capable of producing a large crop of honey. In the first place, many colonies, even large ones, are not in the best condition for rearing queens. If the colony had a poor or failing queen, it may have more old bees than young ones, a poor condition for raising a queen.

When new, small colonies are made up from larger ones (AKA nucs or divisions), their population of bees may not have the best mixture of young and old bees to rear good queens. Such colonies may also be handicapped by having too few bees overall or too few bees for the amount of brood they must care for. The amount of stored pollen and honey and the amounts coming into the hive may also be important limiting factors in producing a good queen.

In 1977, Dr. J. Woyke of Warsaw Poland, published the results of a thorough study of queens reared from larvae of different ages and from eggs. He concluded that each increase of one day in the age of larvae used to rear queens further reduced the queens' weight, number of ovarioles, volume of spermatheca and the number of sperm received at insemination. His results show how important it is to raise queens from the youngest possible larvae, which can be done, when a person selects the larvae. He found that at least 35 percent of the time a dequeened colony of bees selects larvae that are too old to produce the best queens possible. Other conditions in a colony mentioned earlier, may help to further reduce the quality of emergency queens.

When you let bees rear their own queens after making them queenless, the chances are that you will get a small queen with less capacity for egg laying than a queen reared under optimum conditions. The queen may fail sooner than a larger queen. If you are interested in the best performance and maximum honey production from your colonies, provide them with the best possible queens - don't force bees to raise their own queens!

Tips for February:

- The periodic warm spells provide opportunities for the bees to break their cluster, move closer to stored honey, fly, and defecate outside the hive. Sometimes bee flight is intense and if there is snow, their feces will spot the ground for quite a distance. There will be many dead bees littering the ground in front of the hives. This is normal and healthy; house bees are removing dead bees from the hive, and some of the flying bees do not survive. Bee feces (also known as "poop") is yellow and hard to get off of car windows!
- These warm days are a good time to check on your bees. Never open your hive unless there is a good reason and the temperature is at least 50° and sunny.
- Hoist your hives from the rear to assess food stores. This hoisting also alerts you to drainage problems...if water comes running out the bottom, tip your hives just slightly forward to alleviate this situation!
- If your colonies are heavy and bees are coming and going on warm days, relax and get on with other things.
- If you suspect something is wrong wait until a warm 50° sunny day and go inside the hives to see what is wrong. If feeding is called for mix up a heavy syrup 2:1 (sugar:water). Cold bees can't go too far for feed. Try to rig up a way you can feed them through the hole in the inner cover. Put

your jar with holes in the lid over the inner cover and cover the feeder with an empty super and lid. Top feeders also work beautifully.

- Sometimes the cluster is not centered and you'll have to move combs of honey from one side to another....without breaking the cluster.
- Egg laying may resume in January. This is probably a response to increasing day length.
- If on a warm day inspection you find thousands of bees dead--head first in cells, you have witnessed winter starvation. This is caused by either outright absence of food or cold weather preventing the bees from moving to food. Shake out the dead bees to prevent mold. Either close the entrance up completely or remove the equipment to store it inside taking precautions to prevent wax moth damage.
- Get your queens and packages ordered ASAP
- Get any equipment repaired and new supers and frames put together. Most beekeepers are notorious procrastinators (we are). Don't wait until the day the supers should be on the hives to start putting frames together.
- Renew your membership! The grace period is almost over!
- Don't forget your honey on Valentines Day

Excerpts taken from: Honey Bees & Beekeeping A Year in the Life of an Apiary by Keith Delaplane.

Want Ads:

Wanted: 20-30 metal queen excluders with wood frames. Also want to buy 20-30 Illinois supers with or without frames. Contact Jeff Becvar (785) 865-2566

Wanted: I would like to buy a tandem axle trailer for transporting my bees for pollinating services for 1998 and beyond, I must buy it on a plan. Jeff Becvar (785) 865-2566

For Sale: 75 hives with bees complete with lid, bottom board and 2 hive bodies. \$85.00 Call Randy Knotts at 781-0101, Liberty MO

For Sale: 3 frame nucs for sale, with 1998 queen \$50.00 each. Call Kristi Sanderson at 913-768-4961 (Olathe)

Honey Plants

The seed catalogs offer a nice reprieve for these gray February days!

This month watch the entrances of your hives for bees bringing in pollen. The earliest pollens come from the soft maples, followed by the willows and elms and hard maples.

Think about scattering clover seed on top of the snow. Remember honey bees do not work red clover, except in very dry years or on the 3rd or 4th cutting.

What's Buzzin' in the Hive

- We wish a speedy recovery to Ed Bishop! He and Marguerite are going through some rough times.
- Vera Young fell on the ice and gave herself a concussion! If she wasn't so hard headed she might have done more damage!
- Rex Hubbard has also been under the weather lately.

We hope February is kinder to all of you!

BEEKEEPERS VOCABULARLY

L X P Y J N E K K U E G U R G F O N D A N T F
 O G E O N L O X Z I Y R E T N E S Y D M Z V S
 D H N S L O E I T H W F Y S I L O P O R P G Y
 U I P B W L L V T R R X U I P V E N O M D G U
 Q G A D E M I O U A A E O G I T A T Z R R Q I
 T O S S M E A N C L Z C D U P B A L L I N G S
 J X T U T T S T I N O I T A D N U O F B G N V
 L E U G U A O W O Z R S L O I M M O U N N I W
 I N R I Q M S W A G E W E L R R U U I P I T L
 M O A G E O C E K X V R L A A L S D G G M I Q
 T M G T K R L A S D Z O W I B T N B G M M N S
 E O E Y S P U Y J T P S E R N O S R M F U U I
 W R A B S H S D C X Z V O A C V A Y E B R L O
 G E P F M O T A I D I O L S X F E C R O D C S
 O H I Q T S E E L H D P B K T S U R U C E N Y
 U P A R F E R M E N T A T I O N Q E T L D U J
 S I R E A S R E J W M W N R D H J P L A B C Q
 X V I X C C B S H D J G T A W Q R U U P S L P
 E C S M Z O T I W G F X T B J B S K C C F E Q
 Y E T A G I M U F A E E G N I L D N I W D U R
 B Q H L R F G B V D R Z C V N Q V U P L P S P
 T V K Z O C W E N Z Y M E S I W E R A W X H J

WORD LIST: BEEKEEPERS VOCABULARLY

ABSCONDING	DYSENTERY	OCELLUS
AFTERSWARM	ENZYMES	PASTURAGE
APIARIST	EXTRACTOR	PHEROMONE
APICULTURE	FECUNDATE	PIPING
BALLING	FERMENTATION	PLANTS
BEEHIVE	FONDANT	POLLINATOR
BEESWAX	FOULBROOD	POLLINIZER
CLUSTER	FOUNDATION	PROPOLIS
COLONY	FUMIGATE	REFRACTOMETER
COMB	GRAFTING	SLUMGUM
CRYSTALLIZATION	INVERTASE	SWARM
DEXTROSE	LEVULOSE	UNITING
DIASTASE	MEAD	VENOM
DRUMMING	METAMORPHOSES	
DWINDLING	NUCLEUS	

MID-CON AGRIMARKETING

We carry a complete line of beekeeping supplies including woodenware, smokers, extractors, books, gifts, candle making supplies, queens, packages, containers, corn syrup and more! We trade wax for foundation, supplies or cash. We ship by UPS daily. Our hours are 8:30-5:30 M-F. Local, 913-768-8967, long distance 800-547-1392. Joli Winer/Cecil Sweeney MID-CON 1465 N Winchester, Olathe KS 66061

FISHER'S BEE SUPPLIES

We carry a full line of DADANT beekeeping supplies. See us for your woodenware, beekeeping tools, containers, labels, foundation, beekeeping books, cookbooks, queens and nucs in the spring. DADANT and MAXANT Extracting equipment for sale or rent. We will trade your wax for foundation or supplies. Our hours are after 4:00 p.m. Monday-Friday, Saturdays 8-1. All other times by appointment. ED & JEAN FISHER 4005 N.E. 132nd Street, Smithville MO 64089 816-532-4698

MURPHY'S BEE SUPPLIES

We carry a full line of beekeeping supplies. Nucs and queens available April 5 thru May. Extractors for sale or rent. We will buy your wax or exchange for supplies. Honey for sale in all size containers. BEEKEEPING BOOKS AND COOKBOOKS available. We ship to out-of-town customers. Telephone: (913) 299-2628 BOB MURPHY 3423 N 61st Street, Kansas City KS 66104

ROBERT DYE BEEKEEPING SUPPLIES

Complete line of beekeeping needs, honey handling equipment, extractors, containers, labels, wooden supplies, suits, smokers, veils, and queens. Will pay cash for wax, or exchange for foundation. Our prices are the lowest. 50 sheets wired brood foundation for \$30.00. We are located two blocks west of Rainbow on 47th Street. ROBERT DYE, 4701 Booth, Shawnee Mission KS 66205 (913) 722-0417

THE HAWLEY HONEY COMPANY

For Sale: White Clover honey strained in 5 gallon buckets. We will pack it in your jars for an extra fee. Bee equipment, new and used. Jars, foundation, bears, comb honey, used extractors. Bees: 3 frame brood with queen next spring. *If you need it, we probably have what you want.* Raymond Cooper, 1661 Nebraska Rd., Iola KS 66749. Call: 316-365-7919 after 8:00 p.m.

Sand Creek Nursery, The Perennial Place

We have a huge selection of hundreds of varieties of perennials for your gardens. Flowers for bees, flowers for you. Herbs, annuals and vegetables too. Sand Creek Nursery, 2507 Sand Creek Rd., Ottawa KS 1-913-242-5195 Ken and Monica Davidson

**NORTHEASTERN KANSAS BEEKEEPERS ASSOC.
1998 MEMBERSHIP APPLICATION**

NAME _____

ADDRESS _____

CITY _____ STATE _____ ZIP+4 _____

PHONE _____

Membership for 1998 Northeastern Kansas Beekeepers \$8.00 _____

Youth Membership (18 years of age or under) \$4.00 _____

Membership for Kansas Honey Producers Assn. \$8.00 _____

American Bee Journal	1 year \$14.20 _____
<input type="checkbox"/> Renew, attach label <input type="checkbox"/> New	2 years \$26.60 _____
	3 years \$37.75 _____

Gleanings in Bee Culture	1 year \$13.10 _____
<input type="checkbox"/> Renew, attach label <input type="checkbox"/> New	2 years \$25.10 _____

Speedy Bee	1 year \$13.60 _____
<input type="checkbox"/> Renew, attach label <input type="checkbox"/> New	2 years \$25.60 _____

Donation _____

Total _____

Make checks payable to: Northeastern Kansas Beekeepers Assn.
 Mail To: Marie Hendrickson, Treasurer, 5666 Edith Ave., KCKS 66104-1534
 Phone--913-596-1228

1998 NEKSBA SURVEY

1. How old are you? _____
2. How many years have you been keeping bees? _____
3. How many colonies did you have alive in the spring of 1997? _____
4. How many colonies produced honey for you in 1997? _____
5. How many total pounds of honey did you produce in 1997? _____
6. I would like to see the following changes in *The Buzzer* _____
7. I would love to see a program on _____

Northeastern Kansas Beekeepers Association
Joli Winer, Editor
1465 N Winchester
Olathe KS 66061-5881

Non-Profit Organization
U.S. Postage Paid
Kansas City KS
Permit #375

Address Service Requested

Membership Expires 12/31/98
ROBERT BURNS
7601 W 54TH TERR
OVERLAND PARK KS 66202

Meeting February 1st

The Northeastern Kansas Beekeepers Association

Membership is open to anyone who is interested in bees or bee culture. Dues are \$8.00 per calendar year for the first in the family joining. Additional members of that family wanting voting privileges shall be assessed dues at \$1.00 per year. Youth memberships (18 years of age and younger) are \$4.00 per year. New memberships or renewals should be submitted to the treasurer.

The *Bee Buzzer* is the official publication of the Northeastern Kansas Beekeepers Association, Inc. and is published monthly. Commercial ads are accepted in the newsletter for a fee, non-commercial ads by paid up members are accepted free for charge.

The library of the association is free to all members. Books may be checked out at the meetings and kept for a period of 30 days. The bee publications, *The American Bee Journal*, *Bee Culture*, and *The Speedy Bee* can be subscribed for through the treasurer for members at a 25% discount.

The Association meets each month on the first Sunday at 2:30 PM. This is a non profit organization; elected officers serve without pay. Everyone is invited to attend the meeting. Check *The Buzzer* each month for the actual date, time and location.

1998 Officers

President: Frank Smith, 30275 W. 143 rd , Gardner KS 60030	913-856-5406
1st Vice-President: Larry Coppinger, 17472 K192 Hwy., Winchester KS 66097	913-774-4810
2nd VP (Librarian): Rex Hubbard, 3717 W 24th, Lawrence KS 66047	785-842-8659
3rd VP (Honey Plants): Kristi Sanderson, 1012 E. Loula, Olathe KS 66061	913-768-4961
Secretary: Becky Tipton, 9491 X Rd., Meriden, KS 66512	785-484-3710
Treasurer: Marie Hendrickson, 5666 Edith Ave., KCKS 66104	913-596-1228
Program Chairperson: Cecil Sweeney, 1465 N Winchester, Olathe KS 66061-5881	913-768-8967
Program CO-chair: Merlene Eads, 405 E. 92 nd Terr., KCMO 64131	816-361-2326
Editor: Joli Winer, 1465 N Winchester, Olathe KS 66061-5881	H:913-884-5039 913-768-8967