



KINYA

Key Innovation in Your Access

LED LIGHT SOURCE



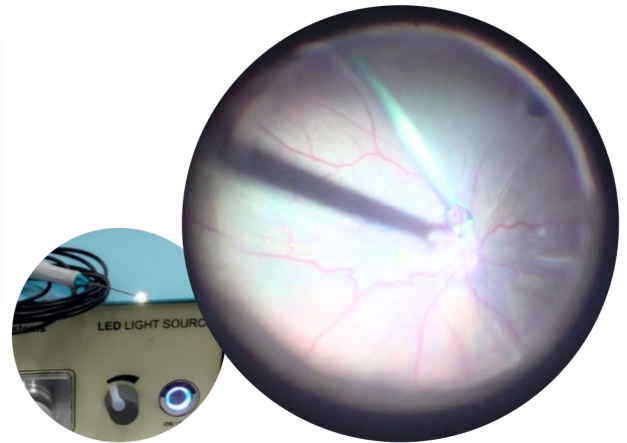
No:46,
Ranga Rice Mill Building, Big Street, Nandivaram,
Guduvanchery, Chengalpattu Dist. TN - 603202

Plot No.55,
Mahalakshmi Nagar Ext-7, Nandivaram,
Guduvanchery, Chennai, TN - 603202

sales@kinya.in | +91 97890 41308 | www.kinya.in

▶ LED LIGHT SOURCE

Illuminate your medical procedures with our high-performance LED Light Source, offering optimal visibility and unparalleled reliability. Designed for a range of applications, this powerful 80W LED light source is an essential tool for healthcare professionals requiring consistent, high-quality illumination.



Illuminate with Precision

High-Intensity Lighting: At 80W power, this LED light provides a bright, white light with a color temperature of 6000 Kelvin for accurate tissue visualization.

Extended Lifespan: With a remarkable lifespan of 50,000 hours, our LED Light Source is a sustainable investment, minimizing the need for replacements and ensuring continuous operation.

Universal System Compatibility: Seamlessly integrates with 23G, 25G, and 27G systems, making it an adaptable solution for a variety of intricate surgeries.

Energy-Efficient Operation: Despite its high output, the unit has a modest power consumption of 110W, making it an energy-efficient choice for busy medical facilities.

Safety First: Classified as Class 1 with automatic over-temperature protection, this light source is built to the highest safety standards, ensuring patient and operator safety during prolonged use.

Universal Compatibility: The fiber optic compatibility with major brands allows for easy integration with existing medical equipment, offering versatility across different procedural requirements.

Lightweight and Portable: Weighing in at only 2.5 kg, this LED light source is designed for portability and ease of handling within the clinical setting.

Power Supply: Equipped to handle 230V with a frequency of 50Hz, suitable for standard electrical outlets in a clinical setting.

Designed for Durability: Engineered to meet the demands of a clinical environment with a robust build and easy-to-use interface.

