

# OFFICE SPACE FOR LEASE

Holly Center - Great Rates- Move In Ready



6851 S. Holly Circle Centennial, CO 80112

## PROPERTY SUMMARY

Building Size:	27,750 SF
Parking:	4 : 1,000
Space Available:	Suite 100 - 875 RSF Suite 110 - 2,088 RSF (Available 6/1/18) Suite 240- 991 RSF Suite 200 - 3,141 RSF
Lease Rates:	\$17.50/RSF
Improvements:	Yes
Year Built:	1979
Elevator:	Yes
County:	Arapahoe

## FEATURING

- Local ownership
- Close proximity to I-25
- Strong retail mix nearby
- Many new upgrades to common areas
- Flexible lease terms
- Easy access

### For more information, please contact:

Rick Giarratano  
T 303.226.4765

[rick@denverofficespace.com](mailto:rick@denverofficespace.com)

Mike Lindquist  
T 303.226.4768

[mike@denverofficespace.com](mailto:mike@denverofficespace.com)

John Fairbairn  
T 303.226.4764

[john@denverofficespace.com](mailto:john@denverofficespace.com)



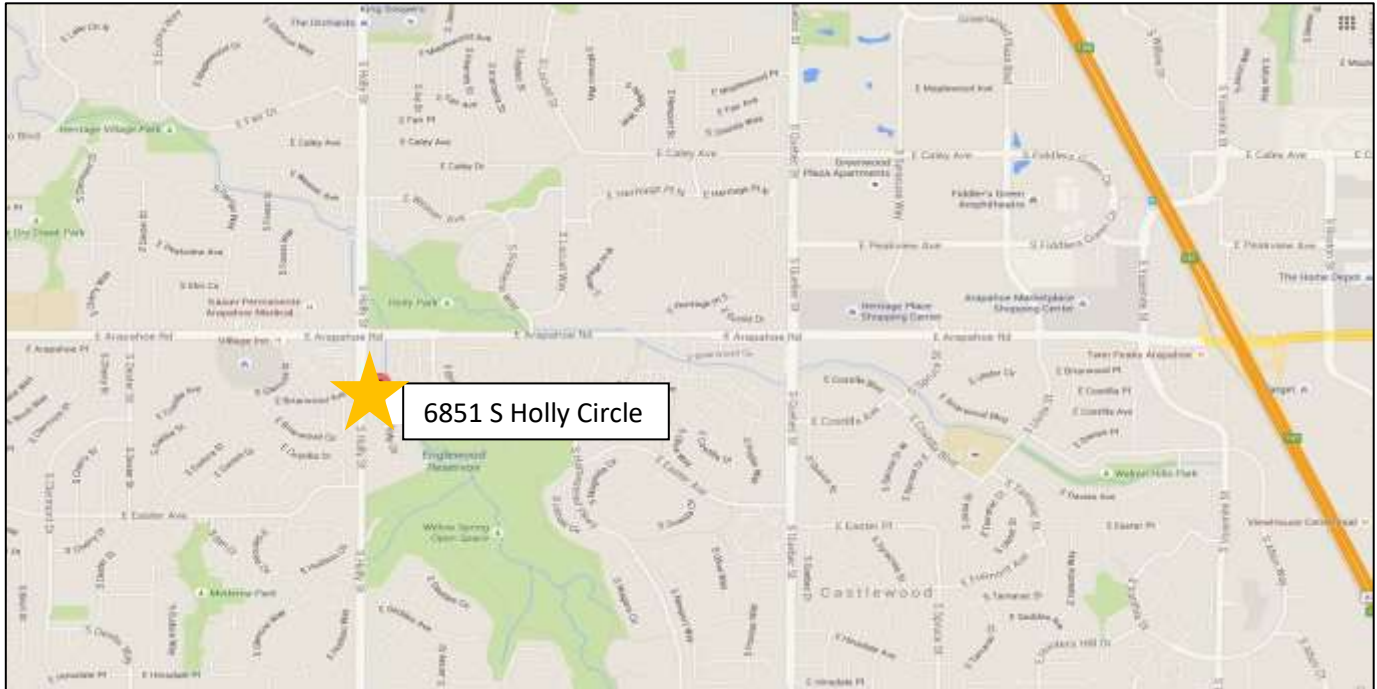
2696 S. Colorado Blvd. | Suite 320 | Denver, CO 80222 | 303-765-4344

[www.denverofficespace.com](http://www.denverofficespace.com)

The information above has been obtained from sources believed reliable. While we do not doubt its accuracy, we have not verified it and make no guarantee, warranty or representation about it. It is your responsibility to independently confirm its accuracy and completeness. Any projections, opinions, assumptions or estimates used for example only and do not represent the current or future performance of the property. The value of the transaction to you depends on tax and other factors which should be evaluated by your tax, financial and legal advisors. You and your advisors should conduct a careful, independent investigation of the property to determine to your satisfaction the suitability of the property for your needs.

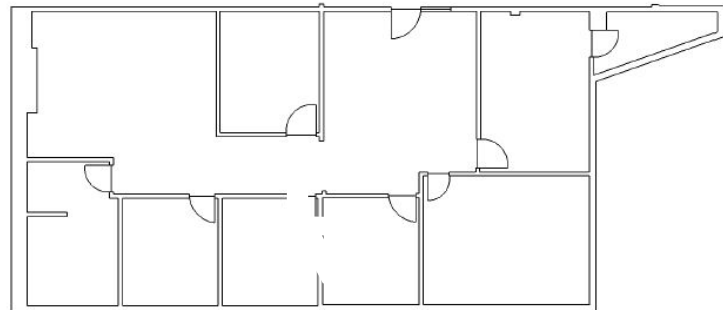
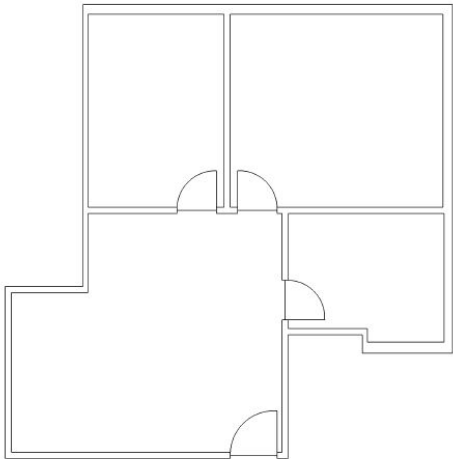
# OFFICE SPACE FOR LEASE

6851 S. Holly Cir. Centennial, CO 80112



Suite 100  
875 rsf

Suite 110  
2,088 rsf



## For more information, please contact:

Rick Giarratano  
T 303.226.4765

[rick@denverofficespace.com](mailto:rick@denverofficespace.com)

Mike Lindquist  
T 303.226.4768

[mike@denverofficespace.com](mailto:mike@denverofficespace.com)

John Fairbairn  
T 303.226.4764

[john@denverofficespace.com](mailto:john@denverofficespace.com)



2696 S. Colorado Blvd. | Suite 320 | Denver, CO 80222 | 303-765-4344

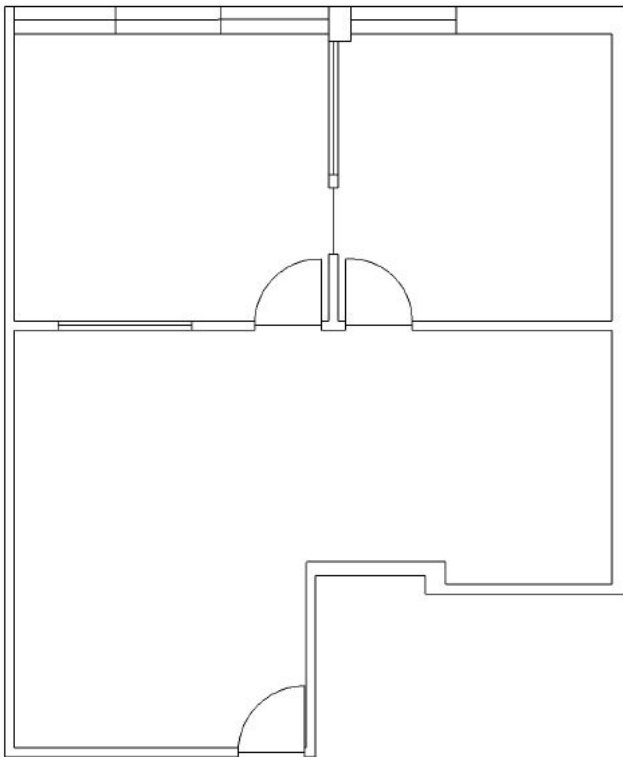
[www.denverofficespace.com](http://www.denverofficespace.com)

The information above has been obtained from sources believed reliable. While we do not doubt its accuracy, we have not verified it and make no guarantee, warranty or representation about it. It is your responsibility to independently confirm its accuracy and completeness. Any projections, opinions, assumptions or estimates used for example only and do not represent the current or future performance of the property. The value of the transaction to you depends on tax and other factors which should be evaluated by your tax, financial and legal advisors. You and your advisors should conduct a careful, independent investigation of the property to determine to your satisfaction the suitability of the property for your needs.

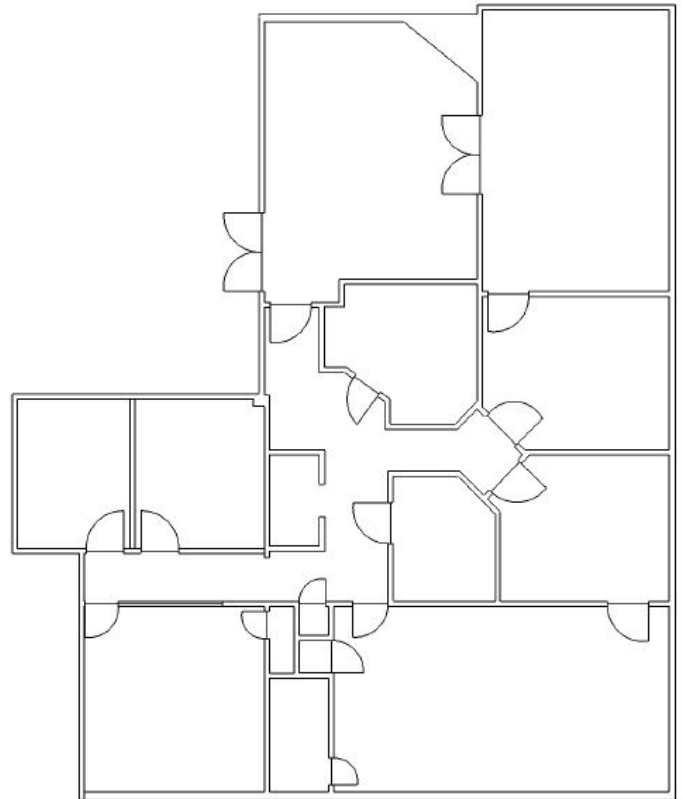
# OFFICE SPACE FOR LEASE

6851 S. Holly Cir. Centennial, CO 80112

Suite 240  
991 RSF



Suite 200  
3,141 RSF



**For more information, please contact:**

Rick Giarratano  
T 303.226.4765

[rick@denverofficespace.com](mailto:rick@denverofficespace.com)

Mike Lindquist  
T 303.226.4768

[mike@denverofficespace.com](mailto:mike@denverofficespace.com)

John Fairbairn  
T 303.226.4764

[john@denverofficespace.com](mailto:john@denverofficespace.com)



2696 S. Colorado Blvd. | Suite 320 | Denver, CO 80222 | 303-765-4344

[www.denverofficespace.com](http://www.denverofficespace.com)

The information above has been obtained from sources believed reliable. While we do not doubt its accuracy, we have not verified it and make no guarantee, warranty or representation about it. It is your responsibility to independently confirm its accuracy and completeness. Any projections, opinions, assumptions or estimates used for example only and do not represent the current or future performance of the property. The value of the transaction to you depends on tax and other factors which should be evaluated by your tax, financial and legal advisors. You and your advisors should conduct a careful, independent investigation of the property to determine to your satisfaction the suitability of the property for your needs.