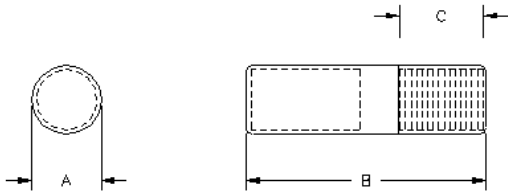


# FISH BODY IMPLANT

## Series F1200



### Technical Specifications

Transmitter type:	Crystal controlled 2-stage ("B" suffix denotes 3-stage)
Calibration tolerance:	±2.5kHz
Frequency stability:	±2.5kHz, -20°C to +40°C
Pulse rate and width:	Typical on time 20ms, off time 1100ms (controlled by uC)
Pulse rate variation:	0.01%/volt, ±0.01% for temperatures -20°C to +40°C
Battery:	Lithium
Activation:	By removing magnet
Encapsulation:	Electrical resin, water-proof, specific gravity: 1.12 Coated with USP Class VI material

MODEL	BATTERY	BATTERY CAPACITY (days)			DIMENSIONS (mm)			WEIGHT (grams)	PRICE GROUP
		35 ppm*	40 ppm	55 ppm	A	B	C		
F1205	10-12	100	73	56	12	51	20	9	F
F1210	10-18	250	182	140	12	57	20	11	F
F1215	10-25	362	264	202	12	64	20	13	F
F1225	10-35	500	365	280	12	74	20	17	F
F1230	1/2AA	897	654	502	18	68	25	23	C
F1235	2/3AA	1078	787	603	18	78	25	30	C
F1235B	2/3AA	440	300	222	20	80	25	32	C
F1240	2/3A	1510	1102	845	20	78	25	40	C
F1245	AA	1941	1416	1086	18	93	25	40	C
F1245B	AA	792	540	400	20	97	25	42	C
F1250B	C		4 YR	3 YR	29	104	30	102	D

\*15 ms pulse width

Factors other than battery capacity may reduce life.

Warranty life is 50% of battery capacity, maximum of two years.

470 First Ave. No. • Isanti, MN 55040  
763.444.9267 • fax:763.444.9384 • sales@atstrack.com • www.atstrack.com