

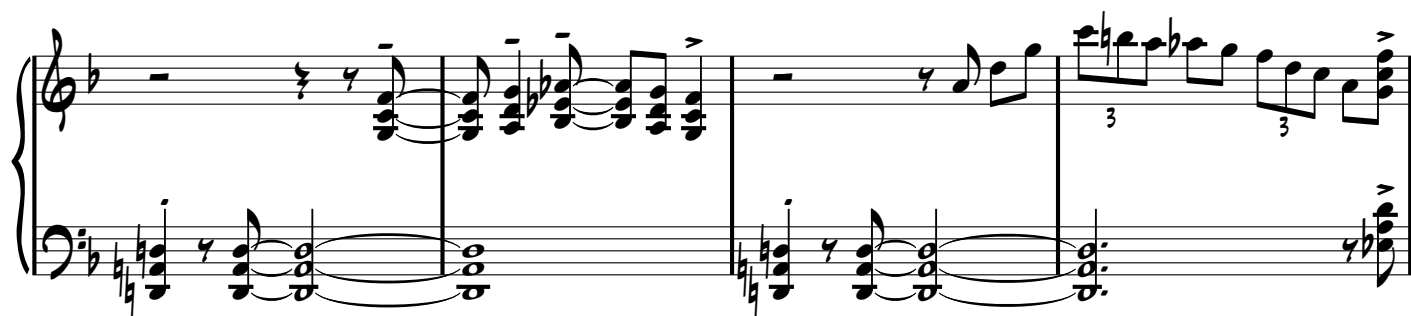
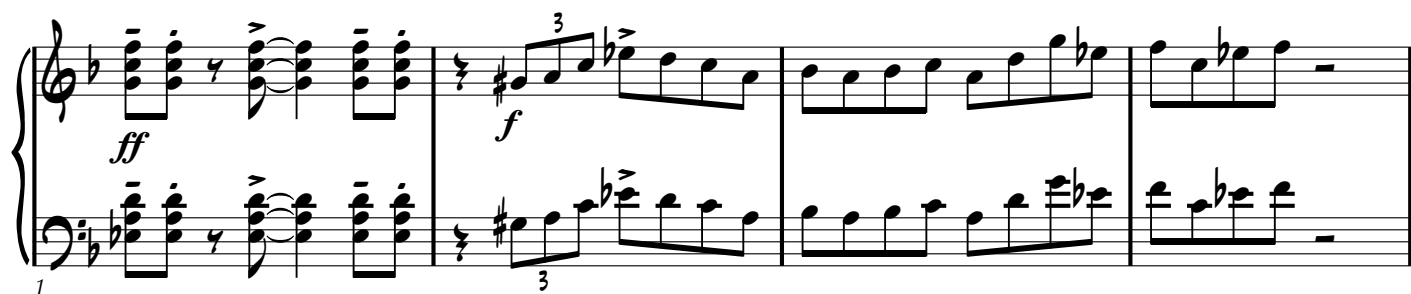
NMEA All State Jazz Audition ETUDE D1 - 2nd LINE

Funky "2nd LINE" Feel (Swing 8ths): M.M. ♩ = 88

COUNTOFF:



A ETUDE



NMEA All State Jazz Audition Etude D1-2nd LINE - Piano

First system of piano etude notation. It consists of two staves (treble and bass clef) in a key signature of two flats (B-flat and E-flat). The music features various chords, including triads and dyads, and includes triplet markings (indicated by a '3' over the notes) in both the treble and bass staves. The piece concludes with a double bar line.

B IMPROVISE 2 Choruses

Improvisation section 1. The first staff is in treble clef with a key signature of two flats. It begins with a whole note chord labeled $F9(b5)$. This is followed by a scale of eighth notes: F, G, A, B-flat, C, D, E-flat, F. The next two staves each contain four diagonal slashes, indicating improvisation. The section ends with a double bar line.

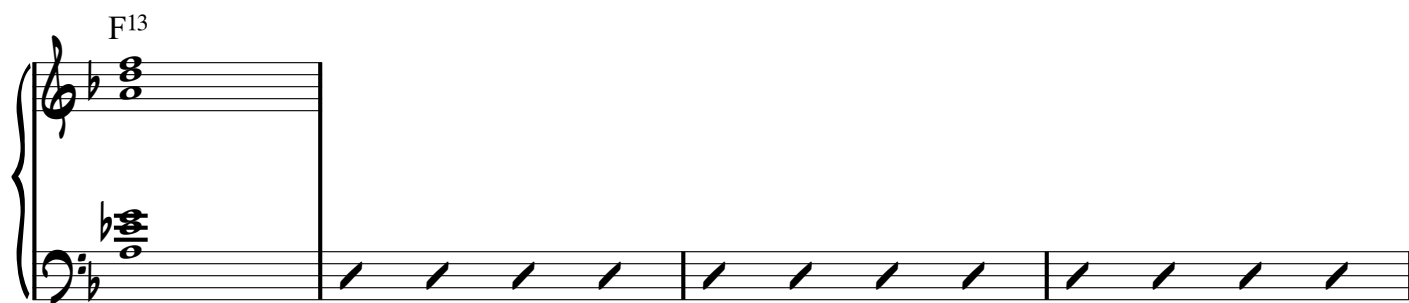
Improvisation section 2. The first staff is in treble clef with a key signature of two flats. It begins with a whole note chord labeled $D\flat 9(b5)$. This is followed by a scale of eighth notes: D-flat, E-flat, F, G, A, B-flat, C, D. The next two staves each contain four diagonal slashes, indicating improvisation. The section ends with a double bar line.

Improvisation section 3. The first staff is in treble clef with a key signature of two flats. It begins with a whole note chord labeled $Dmi7$. This is followed by a scale of eighth notes: D, E, F, G, A, B-flat, C, D. The next two staves each contain four diagonal slashes, indicating improvisation. The section ends with a double bar line.


Improvisation section 4. The first staff is in treble clef with a key signature of two flats. It begins with a whole note chord labeled $F9(b5)$. This is followed by a scale of eighth notes: F, G, A, B-flat, C, D, E-flat, F. The next two staves each contain four diagonal slashes, indicating improvisation. The section ends with a double bar line.

NMEA All State Jazz Audition Etude D1-2nd LINE - Piano**C** **COMP**

F13



D \flat 9(b5)



Dmi7



F13

F9(b5)

