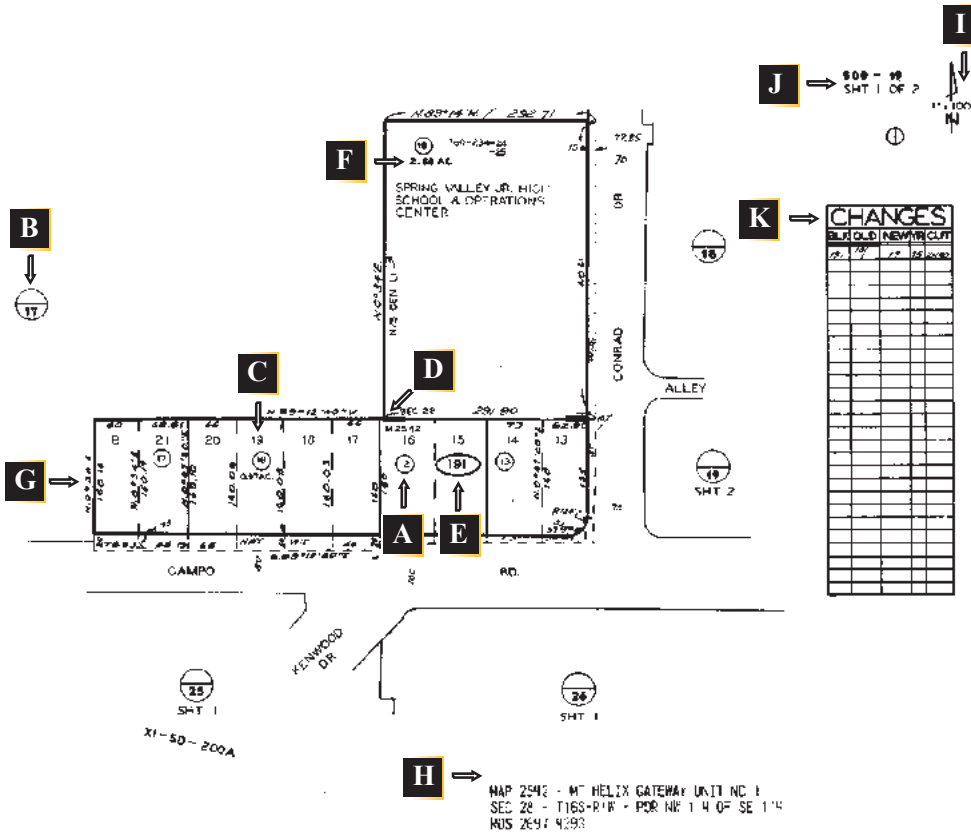


Understanding PlatMap



K

"Changes" Key:

BLK
Full, three-digit page number area of map.

OLD
The old (now changed) parcel number.

NEW
The new (changed) parcel number.

YR
Assessed tax year the change took place.

CUT
Refers to the Assessor's file for document number, re: the change.

- A Parcel Number**
In small circle (occasionally an oval).
- B Book & Page Circle**
Indicates what map page (# below the line) adjoins our map and in some cases which Assessor's Book (# above the line).
- C Lot Number**
Never circled; shows the subdivision lot number (lots 17 through 20 in example).
- D "Picture Corner"**
Shows the exterior subdivision map boundaries as shown on the plat.
- E Page/Block Number**
In example, 191 is Block Number; the first two digits of Block are always the Page Number (see also "J").
- F Acreage Figures**
A decimal number with AC following. (Not always accurate; use only for estimate.)
- G Distances & Bearings**
Data on borders of the map. This data is from recorded deeds or surveys.
- H Map Information**
Brief description of properties included on this page.
- I North Arrow**
Will not always be pointing "up". (SCALE: Useful if map has been printed to proper size.)
- J Assessor's Book Number**
Followed by two digits of the Page Number, located in the upper corners of map.
- K Changes Box**
Provides the history of the map page. (See "Changes" Key for further explanation.)

This information is proudly brought to you by: