

## TS77 SUITE ENTRANCE DOOR CLOSER



- The low cost solution for suite entrance & low traffic doors
- Non-handed
- Quick and easy to install
- Mounts without a mounting backplate
- Compact design
- Inexpensive, proven reliability
- Stocked in aluminum

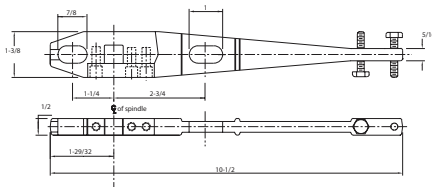
MFG #	SIZE	EZ #
TS77 2 AL	2	036864
TS77 3 AL	3	036865

## RTS88 OVERHEAD CONCEALED DOOR CLOSER



**RTS88**

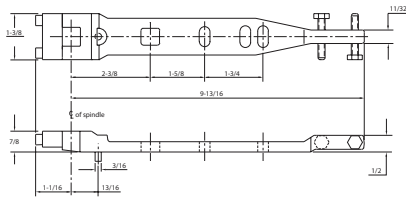
- For wood, aluminum, or hollow metal doors
- Single and double-acting non hold open with latch & sweep valves with pressure relief valve
- Fits into a 1-3/4" x 4" header
- 105° maximum opening door swing
- For doors up to 250 pounds with a maximum 3'-6" width exterior, & 4' interior
- Arm must be purchased separately - it is not included with the body only package



**8831 SIDE LOAD ARM**

**8831 SIDE LOAD ARM**

- Requires 1/2" top rail channel depth



**8836 END LOAD ARM**

**8836 END LOAD ARM**

- Requires 7/8" top rail channel depth

MFG #	DESCRIPTION	EZ #
RTS88 105NHO SZ3	Concealed Body Only, Non Hold Open	036892
8831	Side Load Arm	036902
8836	End Load Arm	036901

## 7400 SERIES HYDRAULIC SURFACE APPLIED RACK AND PINION CLOSER



- It meets 5 lbs interior barrier-free applications
- Non-handed for regular, top jamb and parallel arm applications
- ANSI A156.4 Grade 1
- UL & cUL listed for UL10C and UBC 7.2 for positive pressure
- Two noncritical adjusting valves (sweep and latch) with thermostatic properties work to provide consistent closing speeds under a wide variety of temperatures
- Adjustable backcheck standard. Provides cushioning when the door is abusively opened
- BP640C mounting bracket can be used when installing into a 9-1/16" template hole pattern

MFG #	SIZE	EZ #
7414ARP689	Adjustable 1 To 4	104293

