

Bethlehem Lutheran Church

Volume 56 Issue 8

September, 2016

Traveling at Home

While on vacation this summer, I went for a walk on the farm where I grew up. As I walked familiar surroundings, the passage of time has meant many changes: nearby fields that once grew hay and corn are now planted with houses; there are plans for a shopping mall and school across the road. The time of cattle quietly grazing in a meadow that I remember from my youth is long over.

Although I would like to postpone its departure, I know that summer is almost over, too. With each passing year it seems that the summer season goes by faster and its ending carries with it a greater sense of loss. And yet, every season of every year is new, every known ending an entryway to an unknown beginning. The poet Wendell Berry has described it well in a poem called "Traveling at Home:"

Even in a country you know by heart
it's hard to go the same way twice.
The life of the going changes.
The chances change and make a new way.
Any tree or stone or bird
can be the bud of a new direction. The
natural correction is to make intent
of accident. To get back before dark
is the art of going.

Despite the sound of traffic in the distance, the lane I followed to the pasture where cows once grazed is now covered in grass and shaded by new-grown trees. And on a weathered fence-post a lone meadow lark sings its song. Although we cannot experience life without awareness of loss and grief, still the grace of God abounds.

God's peace,
Pastor Richard

¹ Wendell Berry, "Traveling at Home" in *Traveling at Home*, San Francisco: North Point Press, 1989, 23.

“God’s work. Our hands.” Sunday, Sept. 11, 2016

WE ARE ALMOST READY!

**Thank You everyone for your wonderful response
to our upcoming event:**

Lutheran World Relief Project Promise School kits

We plan to make-up 100 to 125 school kits
Need Bethlehem members and friends
donating a total of 1900 single items.

- Notebook-70 sheet one subject (4 per kit)
- Ruler
- Scissors (safety)
- Pencil sharpener
- #2 Pencils with eraser (5 per kit)
- Ballpoint Pens (blue or black-5 per kit)
- Crayons-24 count box
- Eraser 2 ½ inches
- Drawstring Backpack-style bag

We will pack the sturdy drawstring backpack style bag with shoulder straps as a **Thrivent ACTION TEAM** after our Congregational Pot Luck Luncheon following Worship Service on Sunday, September 11, 2016

Please bring donated items to church by: Sunday, September 4, 2016

Thank You for helping us on this dedicated day of service to serve and love our neighbors!

**Bethlehem Social Ministry
Bob & Andrea Campbell and Crew**

**“God’s Work-Our Hands”
Congregational Pot-Luck
Luncheon**

**Sunday, September 11, 2016 in Bachman Hall
11:15 a.m.**



**Immediately following Worship
Bring Salad or Hot Dish. Special Hot Sandwich and
Dessert provided**

**Project Promise School Kits for
Lutheran World Relief to be packed.
Join us with family and friends.
Sign up on patio**

Fall Christian Education

Our fall season will kick-off with on Rally Day, September 18th, with an introduction to our Children's and Adult Sunday School materials.

The children's program will again be using the "Holy Moly" video series. Our adult offerings for Sunday mornings will include topical and biblical studies, beginning with an 8-part series on Luther's Small Catechism. Sunday School and the Adult Sunday School will start on September 25th at 9:00 am.

A Monday evening Adult Discussion group will also begin on September 19th, meeting at 7:00 pm in the sanctuary.

Faith Circle

It is hard to believe that summer is almost over and we will have our circle meeting on Tuesday, September 6, at 9:30 in the Fireside Room. Pastor Richard will be doing our bible study and our hostess will be Janice Hunt. What fun to all be together again, Arlene Pollard.

Men in Mission Meeting

The next Bethlehem Men-In-Mission meeting will be on Saturday, September 17th, 2016, at 9:00 A.M in the Fireside Room. We will be studying "Luke's Gospel to the Gentiles" from the Master Builders Bible for Men. The reading for this week will be Chapter 4:31 thru Chapter 7:50 with discussion on verses 5:27-39 about the calling of Levi and new wineskins.



Interested in playing handbells? Join us at 6 p.m. on Thursdays beginning on October 13th. The ability to read music is helpful but not required. Please contact Heidi Kracy if you are interested in participating.



GOLFERS SAVE THE DATE – "SCRAMBLE" GOLF TOURNAMENT IN OCTOBER:

There is an excellent opportunity to participate in a "Scramble" golf tournament on Monday, October 10, 2016, at the Vineyard Golf Course in Escondido. All proceeds will benefit the Lutheran Retreats Camps and Conferences (LRCC) that maintain two camps at Yolijawa/Luther Glen Conference Center and El Camino Pines providing outdoor ministry for Southern California. First Tee Time will be 12:15 P.M. The Early Bird Golfer (before Sept 25) fee will be \$125 per person. After September 25 the fee is \$150 per golfer. The fee includes green and cart fees, BBQ dinner, raffle, on-course contests, entry into putting contest and a donation to LRCC. If you have any questions please contact Dale Retrum at (714) 527-4337.



W.E.L.C.A. News

September 2016

Women's Bible Study

When God Forgives the Guilty

Session 1: Jonah



WELCA Board

The September Board meeting was held **Sunday, August 28th**. The next meeting of the WELCA Board will be held **Sunday, October 2nd**, For more information, contact Dianna Reynolds.

FAITH Circle

Meets **Tuesday, September 6th** beginning at 9:30 a.m. in the Fireside Room. The hostess will be Janice Hunt with Bible Study by Pastor Richard. For questions and details, call Faith Circle leader, Arlene Pollard.

PHOEBE Circle

Meets **Tuesday, September 13th** beginning at 6:30 p.m. hosted by Carol Snyder. The Tanglewood North Clubhouse is at 4247R Via Largo in Cypress. If you need directions call Carol at (714) 828-5631. For questions and details? Call Dianna Reynolds. All Women of Bethlehem are welcome.



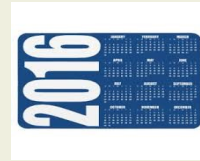
Sunday Morning

Coffee & Cookies

Thank you to Faith Circle for providing coffee and cookies in the month of August. Men in Mission will be responsible for the month of September.

Women's 2016 Theme

"Serving with Joy"



WELCA's Calendar of Events



A big THANK YOU to Debby and Bruce Gustafson for hosting the Women's summer BBQ. Thank you for grilling, opening your home and taking such good care of us!



Coming Soon! Bethlehem's **43rd Apple Festival Bazaar**

October 15, 2016



**November 4th and 5th
Pacifica WELCA Convention
At Bethlehem Lutheran Church**

Check out Pacifica Partners on line

www.pacificawomen.org

click on news & events

Join the Pacifica Synod

Women of the ELCA

On Facebook.



SAVE THE DATE!



43rd Annual Apple Festival Bazaar 2016

Sat. October 15 8am to 1pm

Bethlehem Lutheran Church

Chairpersons: Dianna Reynolds & Christina Watson

DEPARTMENT:

HEAD CHAIRPERSON(S)

Kitchen

Dianna Reynolds

Gourmet/Bakery

Debby Gustafson

Addie's Attic

Johanne Hansen & Jeanne Sandvig

New Treasures

*

Handmade Crafts

Marjorie Moeller

Personalize Ornaments

Liz Nehrenberg

Setup/Teardown

Men in Mission

Lynn's Book Nook

Brian, Erika & Katrina Gary

Cashiers

Andrea Campbell, Diane Clark

Advertising

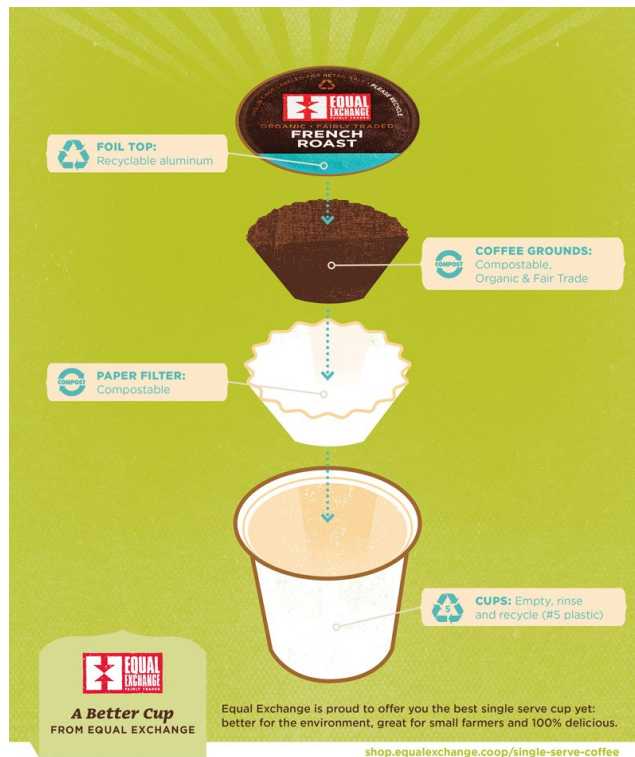
*

***WE NEED CHAIRPEOPLE FOR THE ABOVE DEPARTMENTS
-PLEASE CONTACT**

DIANNA OR CHRISTINA ASAP



Bethlehem was represented at the
Seal Beach cleanup day on Aug 20!



Fair Trade Coffee, Tea, etc.

We continue to offer three choices for the Equal Exchange Single Serving Coffee:

Organic Breakfast Blend

Organic French Roast

Organic Unwind Decaf

From the Equal Exchange Blog:

"We're no strangers to environmental issues, and we've been paying attention to the conversation about waste that surrounds typical, disposable K-cups. Because sustainability is important to us, and we know it's important to you, we researched many manufacturing options to find the best, most environmentally friendly cup and packaging available. What we found is really exciting: a cup that is **#5 recyclable plastic** with a **recyclable aluminum lid** and an **88% compostable filter**. This is a big step forward from most cups on the market, and we intend to follow the latest developments in single serve packaging in order to bring you the best."

For the complete article:

<http://equalexchange.coop/blog/drink-a-better-k-cup-with-equal-exchange-single-serve-coffee>

Not compatible with KEURIG® VUE® or 2.0 Brewing systems

The graphic gives you a better idea of how you can recycle the single serving pods.

The coffee is available for purchase on the patio after the worship service or from the church office during the week (Mon - Thurs.).



Lutheran Social Services-Long Beach Community Care Center Monthly Report

Dear Bethlehem Family and Friends,
As we continue our monthly request for in-kind food donations in 2016 we are asking you for your continuing help during **September** for **Cereals, Peanut Butter** (small jars) **any canned vegetable or fruit or cup of fruit or applesauce** currently needed daily. Continuous donated items of all food items especially with pop tops, clothes and socks (new or gently used) are always needed.

Thanks again for helping to keep our Lutheran Social Service cupboard (Pastor's Pantry in Narthex) full. Lutheran Social Services (LSS) Long Beach and the people and families served daily in their Ministry again appreciate your kindness, care and compassion.

Bob, Andrea and crew
Social Ministry Committee



Thank You

for your Kindness

Social Ministry Committee made a delivery to Lutheran Social Services-Long Beach on Aug. 17th and we were greeted by Dr. Bell. Our van was full to the top. He asked that we extend his thanks for all that Bethlehem does for LSS.

Parish Life:

A great big “Thank You” to all who attended the Parish Life Barbecue and Folk Sing.

Oh what wonderful afternoon as Ken Watson led the musical festivities along with Brian Gary, Jordan, Nick, and Pastor Richard. Everyone enjoyed all of the wonderful appetizers, salads and desserts. The tables were full and, of course, the hamburgers and hot dogs were cooked to order!

I want to take a second and thank each of the wonderful members of the Parish Life Committee who are such a joy to work with. Be on the lookout for future potlucks and more singing.

Marianne



Thrivent Action Team Project has been approved and our Bethlehem Team: “God’s work. Our hands” Sunday event, September 11, 2016 has already been in action securing items for our Project Promise School Kits. With **Thrivent’s** help we have been able to purchase the needed Drawstring Backpacks. **We thank Thrivent** for their inspiring generosity so that our Bethlehem family can continue to make a positive change in the future of children around the world.

Social Ministry Committee thanks our member who helped in securing this special funding.



Having
fun
this
summer!



Stewardship Emphasis will Begin in October

The Stewardship Emphasis in preparation for the calendar year 2017 is titled "**Investing for Time and Eternity.**"

It will be based on Mathew 6:20-21 – "But store up for yourselves treasures in heaven, where moth and rust do not destroy, and where thieves do not break in and steal. For where your treasure is, there your heart will be also."

The campaign will emphasize how as managers and stewards we use our time, talents and treasures to do what God has called us to do in the ministry of the local church as we "seek first the kingdom of God." This Emphasis will begin the First Sunday of October.

It will consist of a Newsletter article, mailings to our homes plus bulletin inserts and temple talks on four Sunday mornings. It will culminate on "**Harvest Celebration Sunday,**" October 30th, 2016, when we will submit our **Response Cards** and **Time and Talent Sheets.**

Please give prayerful consideration as to how you can best give of your time, talents and financial resources to help Bethlehem meet its mission to share the Gospel of Jesus Christ.

"Like good stewards of the manifold grace of God, serve one another with whatever gift each of you has received." (1 Peter 4:10)

Bethlehem Lutheran Church-Final Report
Vacation Bible School July 25, 29, 2016 9am-Noon
Church wide Bar B Q Friday July 29th 5:30-7:30
Director: Christina Watson

Our Theme was *Christmas in July*"

Program, Lessons and Music- Brian Gary and Ken Watson

Publicity-Sandy Retrum

Signage-Dianna Reynolds

Pre-Registration - Alice Roop

Daily Sign-In/Out- Alice Roop, Marynell Wolfe and Arlene Pollard

Instructor Pre-School-K (Angels 4 members) - Erika Gary, Emma Stockton, Margie and Sarabeth Reynolds

Instructor 1st-3rd - (Shepherds 9 members) Jeanne Sandvig, Hannah Coe

Instructor 4th-6th -(Wise Men 9 members) Sarah Sandvig, Hannah Coe

Crafts -Liz Nehrenberg, Johanne Hansen, Marjorie Moeller, Lindsey and Lauren Gill

Snacks - Cindy Rollefson, Janice Hunt and Shirley Campbell

Games-Katrina Gary, Josh Sanford and Emily Reynolds

Barbeque Food Coordinator-Bethlehem Members

Friday Barbeque-Dianna Reynolds and The Men in Mission. 65 people attended and loved the program, fellowship and food!

Set Up and Take Down-Ken Watson and Pastor Richard

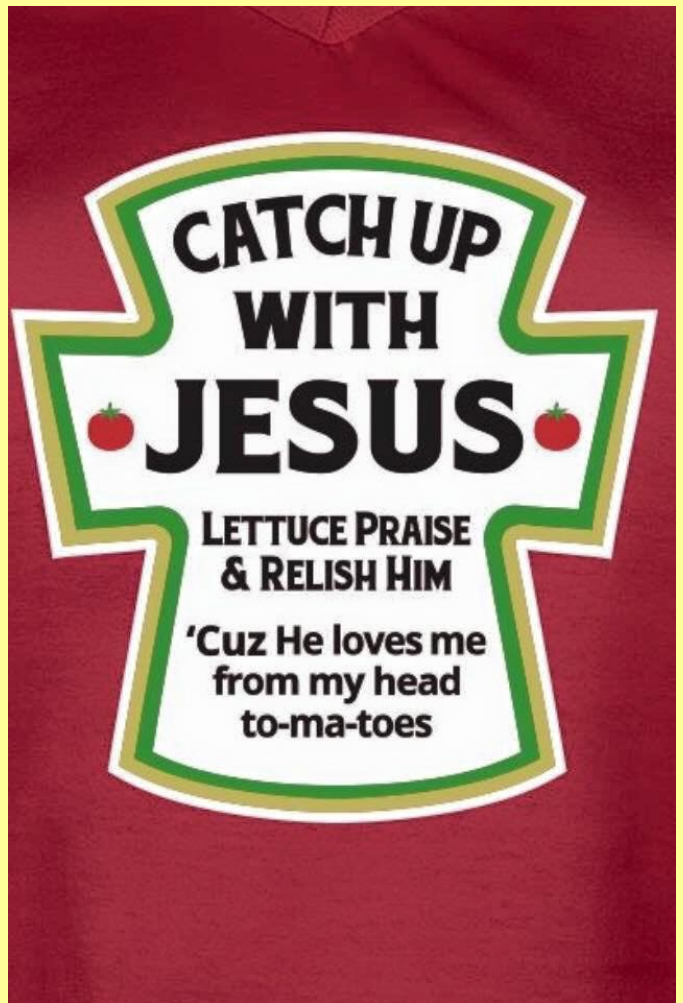
Benevolence Project: Lutheran Seafarer Mission-Approximately \$100 raised.

I cannot list everyone who helped make this VBS happen. Our Bethlehem Family is so generous and supportive and "thank you" doesn't really say enough. Respectfully Submitted, Christina

Ken, Brian, Erika and I are already planning next year's program-the theme will be:

"Go Green with God" Creation....Conservation

VBS Fun July 2016









Hal & Marynell Wolfe	9/5/1954
Bruce & Deborah Gustafson	9/10/1977
Dick & Johanne Hansen	9/12/1964
Brian & Ginny Gary	9/13/1986

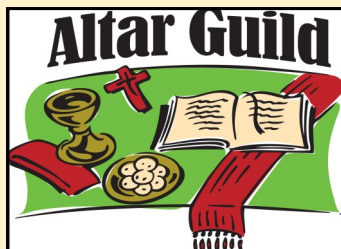
9/1	Johanne Hansen	9/4	Renee Correia	9/6	Anthony Correia
9/6	Heidi Krcy	9/6	Carol Snyder	9/7	Delbert Carrillo
9/8	Steve Wolfe	9/10	Larry Rolf	9/12	Margaret Ziegler
9/17	Marge Hargrove	9/24	Dale Retrum	9/27	Christina Watson
9/30	Candie Toth				



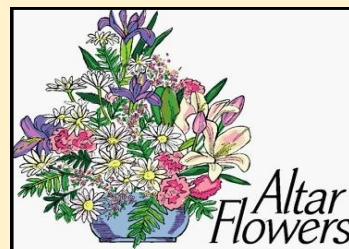
Gladyce Ackerman	Jeff Davis	Betty Jones	Valerie Sanchez
Julie Anderson	Sara DeWeese	Linda Kjenstad	Rich Schultheis
Melody Andreoli	Keresey Dillon	John La Barbera	Mary Seibert
Elaine Asbury	Laura Duke	Joan Lee	Dorothy Sideris
Denise Baalke	Joan Ebersold	William Lewis	Charlotte Sohl
Amy Bachman	Lynne Estabrook	Erin Lopez	Leslie Summers
Shirley Bell	Doug Evans	Jessica McIntire	Ed Sutton
Colleen Bidwell	Judy Frazier	Pete Miller	Joyce Tarver
Arthur Brandon	Katrina Gary	Sandy Miller	James Taylor
Charlie Buezis	Rick Gary	Michael Murray	Ann Tegtmeier
Luelle Buezis	Jason Guerin	Linda Nygard	Steve Tegtmeier
Elinor Blum	Bruce Gustafson	Dana Pagett	Alyssa & Jurrian Terpstra
Bob Campbell	The Bryan Halverson Family	Coler Pearce	Allen Thunselle
Laurie Carpenter	Joe Harris	Andrew Pritchard	Linda Thunselle
Shirley Carrier	The Hashimoto Family	Dale Retrum	Hank Van Zant
Gloria Clara	Diana Hayden	Nick Riley	Elizbeth Waddell
Linnea Clayton	Dennis Hengy	Bill Ritz	Sandy Wasky
Etta Bjornson Connell	Donna Hoffman	Louise Ronchetto	Tom Watkins
Maxine Cornwell	Genevieve Jenkins	Jason Sakowski	Hal Wolfe

Thanks to These People for Serving in September

	Reader	Cantor	Ushers	Counters
9/4	Dale Retrum	Eric Dobberteen	Dawn Rentch Dianna Reynolds Marv & Susan Schneider	Charlotte Driskill Jim Martin
9/11	Eric Dobberteen	Eric Dobberteen	Marge Hargrove Paul Meyer Christina Watson	John Buezis John Buezis, Jr
9/18	Dianna Reynolds	Eric Dobberteen		Marv Schneider Susan Schneider
9/25	Alice Roop	Eric Dobberteen		Andrea Campbell Bob Campbell



9/4
9/11 Vanessa Stevenson
9/18
9/25 Debby Gustafson



9/4 Clausen, Hansen, Wolfe
9/11 Hansen, Roop
9/18 Gustafson, Stevenson
9/25 M. Moeller, Watson