



MANZONI

BY

*Ashley Norton*



APRIL 2024



**Established in 1987, Ashley Norton** has grown to become one of the leading designers and manufacturers of architectural hardware.

The Ashley Norton cabinet hardware collection features a wide choice of designs and finishes, cast in Solid Bronze or forged in Solid Brass. Our Solid Bronze products are sand cast from art grade bronze, and feature distressed patinas. Our Solid Brass products are hot forged, allowing for crisp, sharp lines with exceptional finish quality.

Our Manzoni range has been created with elegance and flair, to make a distinctive statement. Starting from the aesthetics of the design, to the quality of the finishing and even the ergonomics of the operation, our designers have taken care with every detail. And of course, our renowned manufacturing expertise allows us to create a product which is both pleasing to the eye as well as comfortable to touch.

Choose from the most unique collection of designer-inspired cabinet hardware. Whether the style of your space is urban or traditional — our wide collection brings you a diverse selection of offerings to suit the architectural features of your space.



MANZONI

## Table of Contents

---

Solid Bronze .....	4
Solid Brass .....	44
Urban .....	68
Stainless Steel .....	73
Fine English Pewter .....	75
Classical .....	84
Industrial .....	91
Silk Touch.....	94
Mystic .....	96
Designer Wood .....	100

*Ashley Norton*

# SOLID BRONZE

---

Ashley Norton utilizes the finest art grade bronze alloys in the production of our hardware. Our Dark Bronze (BZ), Natural Bronze (NB) and Matte Black (TC) products are produced from silicon bronze, a coppery-gold colored alloy of copper, silicon and zinc.

Our Dark Bronze (BZ) patina is our most popular, and allows for the greatest uniformity in shade at time of delivery. We aim to stock the most popular items in this patina.

Our Matte Black (TC) products are created through the application of a black powder coat.

Our new Natural Bronze (NB) patina allows for a trendy look similar to a lightly aged-brass. The modern color tone, coupled with the natural distressing typical of sand-cast bronze hardware results in a distinct product to suit multiple design styles.

Ashley Norton applies a light coating of wax to protect our products from oxidization and wear. As the wax coating wears off, the patinas will be exposed to the environment. The effects of age, climate and touch will work in conjunction to create unique, contrasted color variations. The most frequently touched areas will highlight as the patina wears off and natural shades of bronze are exposed. Areas which are not handled may oxidize further, and the combination of colors and hues will accentuate the timeless elegance of bronze.



Dark Bronze (BZ)



Matte Black (TC)



Natural Bronze (NB)



White Bronze (WL)



White Medium (WM)





Ashley Norton



Item	Dia.	Projection	Price
A	118 1/4"	1 1/4"	\$27.00
B	118 1/2"	1 1/2"	\$30.40
C	118 2"	2" x 1 1/8"	\$42.10
D	114 1/4"	1 1/4"	\$43.30
E	114 1/2"	1 1/2"	\$51.30



**Newport Knob**

Item	Dia.	Projection	Price
3990 1 1/4"	1 1/4"	1 1/8"	\$31.90
3990 1 1/2"	1 1/2"	1 1/2"	\$37.30



**Helios Knob**

Item	Dia.	Projection	Price
3880 1 1/4"	1 1/4"	1"	\$31.90
3880 1 1/2"	1 1/2"	1"	\$35.20



**Round Cone Knob**

Item	Dia.	Projection	Price
3189 1 1/4"	1 1/4"	1 1/8"	\$39.10
3189 1 1/2"	1 1/2"	1 1/8"	\$43.60

Item	Dia.	Projection	Price
A	117 1/4"	1 1/4"	\$27.00
B	117 1/2"	1 1/2"	\$30.40
C	113 1/4"	1 1/4"	\$43.30
D	113 1/2"	1 1/2"	\$51.30



Item*	Size	Projection	Price
3895 1¼	1 ¼ x 7⁄8"	1"	\$35.20



**Square Cone Knob**

Item*	Size	Projection	Price
3191 1¼	1 ¼ x 1 ¼"	1 ⅛"	\$49.50
3191 1½	1 ½ x 1 ½"	1 ⅛"	\$55.40



Item*	Size	Projection	Price
3674 1¼	1 ¼ x 1 ¼"	1"	\$35.20
3674 1½	1 ½ x 1 ½"	1"	\$38.40



**Cube Cup Pull**

Item*	Size	Projection	Price
3892 1½	1 ½ x 7⁄8"	7⁄8"	\$48.20



**Round Step Knob**

Item	Dia.	Projection	Price
3624 1¼	1 ¼"	1"	\$38.40
3624 1½	1 ½"	1"	\$41.70



**Square Step Knob**

Item*	Size	Projection	Price
3672 1¼	1 ¼ x 1 ¼"	1"	\$41.70
3672 1½	1 ½ x 1 ½"	1"	\$46.30

\*Square knobs cannot be used with backplates



**Octave Knob**

Item	Size	Projection	Price
3775 1¼	1 ¼ x 1 ¼"	1 ⅛"	\$38.10
3775 1½	1 ½ x 1 ½"	1 ⅛"	\$42.70



**Cleat Knob**

Item	Size	Projection	Price
1122	2 x ¾"	1 ⅝"	\$42.10
1123	3 x ⅞"	1 ⅝"	\$46.50



**Brylee Knob**

Item	Dia.	Projection	Price
3858 1¼	1 ¼"	1 ⅜"	\$41.70
3858 1½	1 ½"	1 ½"	\$46.00



**Gallery Pull**

Item	Dia.	Length	Projection	Price
334	⅜"	3 ½"	1 ¼"	\$46.00





**Miles Knob**

Item*	Size	Projection	Price
3899 1¼	1 ¼ x 1 ¼"	1 ¼"	\$37.20
3899 1½	1 ½ x 1 ½"	1 ¼"	\$40.40



**Tayo Knob**

Item	Dia.	Projection	Price
3875 1¼	1 ¼"	1 ¼"	\$31.60
3875 1½	1 ½"	1 ¼"	\$34.70



**Round Disc Knob**

Item	Dia.	Projection	Price
3884 1¼	1 ¼"	1 ⅛"	\$31.60
3884 1½	1 ½"	1 ⅛"	\$34.70



**Hudson Knob**

Item*	Size	Projection	Price
4382 1⅜	1 ⅜ x 1 ⅜"	15/16"	\$37.00



**Mila Knob**

Item	Size	Projection	Price
3112 1¼	1 ¼ x 1 1/16"	1 ¼"	\$27.00
3112 1½	1 ½ x 1 3/16"	1 ¼"	\$30.00



**Mushroom Knob**

Item	Dia.	Projection	Price
378 1¼	1 ¼"	1"	\$35.60
378 1½	1 ½"	1"	\$40.20

\*Square knobs cannot be used with backplates



**Faceted Knob**

Item	Size	Projection	Price
3995 1¼	1 ¼" x 1 ¼"	1 ⅛"	\$38.10
3995 1⅜	1 ⅞" x 1 ⅞"	1 ⅛"	\$42.70

**Potato Knob**

Item	Size	Projection	Price
3630	1 ⅞" x 1 ⅜"	1 ⅞"	\$40.40



**Square Puffed Knob**

Item	Size	Projection	Price
3678 1¼	1 ¼" x 1 ¼"	1 ⅛"	\$34.70
3678 1½	1 ½" x 1 ½"	1 ¼"	\$38.00

**Jewelled Knob**

Item	Size	Projection	Price
3735 1¼	1 ¼" x 1 ¼"	1"	\$40.40
3735 1½	1 ½" x 1 ½"	1"	\$44.80





**Wheel Knob**

Item	Dia.	Projection	Price
3891 1¼	1 ¼"	1"	\$38.40
3891 1½	1 ½"	1 ¼"	\$43.10



**Bead Knob**

Item	Dia.	Projection	Price
3985 1¼	1 ¼"	1 ¼"	\$34.50
3985 1½	1 ½"	1 ¾"	\$39.10



**Rose Knob**

Item	Dia.	Projection	Price
391	1 5⁄8"	1 3⁄8"	\$42.10



**Item**

Item	Dia.	Projection	Price
394	1 3⁄8"	1 3⁄8"	\$36.00



**Twist Knob**

Item	Length	Projection	Price
399 1¾	1 ¾"	1 1⁄8"	\$35.20



**Textured Knob**

Item*	Size	Projection	Price
3896	1 5⁄8 x 3⁄4"	1"	\$37.70



**Bar Knob Pull**

Item	Size	Projection	Price
3431	2" x 5⁄8"	1 3⁄8"	\$30.40



**Deco Knob**

Item*	Size	Projection	Price
3980 1¼	1 ¼ x 1 ¼"	1"	\$38.40
3980 1½	1 ½ x 1 ½"	1"	\$41.70

\*Square knobs cannot be used with backplates



**Opal Knob**

Item	Size	Projection	Price
3621 1 1/2	1 1/2 x 3/4"	1 1/4"	\$38.40



**'L' Knob**

Item	Size	Projection	Price
3894 1	1 x 1"	3/4"	\$35.20

Cannot be used with backplates



**Stick Knob**

Item	Dia.	Projection	Price
385 3/4	3/4"	1 1/8"	\$31.90



**Stone Knob**

Item	Size	Projection	Price
A 3920	2 x 1 1/8"	1 1/8"	\$39.10
B 3927	1 5/8 x 1 5/8"	1 1/4"	\$39.10



**Artisinal Knob**

Item	Size	Projection	Price
119	3 1/8 x 7/8"	1 3/4"	\$56.90



**Tuscany Knob**

Item	Size	Projection	Price
115	2 7/8 x 7/8"	1 5/8"	\$54.40





**Aiden Knob**

Item	Dia.	Projection	Price
3981 1¼	1 ¼"	1 ⅜"	\$38.10
3981 1½	1 ½"	1 ⅜"	\$42.70



**Square Disc Knob**

Item	Size	Projection	Price
3897 1¼	1 ¼" x 1 ¼"	1 ⅛"	\$34.70
3897 1½	1 ½" x 1 ½"	1 ⅛"	\$38.00



**Mateo Knob**

Item	Dia.	Projection	Price
3125 1¼	1 ¼"	1 ⅛"	\$38.10
3125 1½	1 ½"	1 ⅛"	\$41.40



**Pyramid Knob**

Item*	Size	Projection	Price
390 1¼	1 ¼" x 1 ¼"	1 ⅛"	\$33.60
390 1½	1 ½" x 1 ½"	1 ¼"	\$37.30



**Trapezoidal Knob**

Item*	Size	Projection	Price
3625 1¼	1 ¼" x 1 ¼"	1"	\$38.40



**CKB.SQ**  
2 1/2" x 1 1/2"  
Price: \$33.60



**CKB.SR**  
2 1/2" x 1 1/2"  
Price: \$33.60



**CKB.CV**  
2 1/2" x 1 1/2"  
Price: \$33.60



**CKB.OV**  
2 1/2" x 1 3/8"  
Price: \$29.10



**CKB.MS 1 1/2**  
1 1/2" x 1 1/2"  
Price: \$25.60



**CKB.MS 1 3/4**  
1 3/4" x 1 3/4"  
Price: \$31.90



**CKB.RD 1 1/2**  
Dia: 1 1/2"  
Price: \$20.80



**CKB.RD 1 3/4**  
Dia: 1 3/4"  
Price: \$27.00



**CKB.FS**  
5" x 1 1/2"  
Price: \$30.60



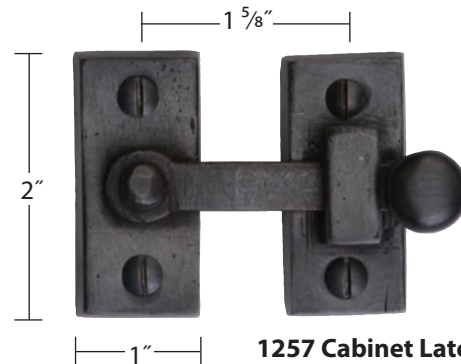
**CKB.FL**  
6 1/2" x 1 1/4"  
Price: \$30.60



**CKB.CL**  
3 1/2" x 1 3/4"  
Price: \$48.20



**CKB.FW**  
Dia: 1 1/2"  
Price: \$29.10



**1257 Cabinet Latch**  
Price: \$64.10



**Alexander Cup Pull**

Item	Size	Projection	Price
1730	4 1/16" x 1 1/2"	3/4"	\$48.00

Item	Size	Projection	Price
A 1700	3 7/8" x 1 5/8"	3/4"	\$48.00
B 1710	6" x 1 7/8"	1 1/8"	\$66.90



**Industrial Cup Pull**

Item	CTC	Size	Projection	Price
1720 5 5/8"	3"	5 5/8" x 1 5/8"	1"	\$60.10
1720 8 5/8"	6"	8 5/8" x 1 5/8"	1"	\$72.10
1720 10 5/8"	8"	10 5/8" x 1 5/8"	1"	\$83.90

**Grace Cabinet Pull**

Item	CTC	Length	Width	Projection	Price
3321 4	96mm	5"	1 1/4"	1 1/4"	\$60.10
3321 6	6"	7 1/4"	1 1/4"	1 1/4"	\$86.50





**Flush Ring Pull**

Item	Size	Dia.	Projection	Price
1166	2 x 2 1/2"	1 1/4"	1/8"	\$56.20



Item	CTC	Length	Projection	Price
392	96mm	5"	1 1/4"	\$59.20



Item	CTC	Size	Projection	Price
393	96mm	5 1/2 x 3/4"	1 1/8"	\$59.20



Item	CTC	Length	Projection	Price
373	96mm	5"	1"	\$54.40



**Kali Pull**

Item	CTC	Length	Projection	Price
3343 5 1/2	96mm	5 1/2"	1 1/2"	\$56.90
3343 7 3/4	6"	7 3/4"	1 1/2"	\$71.20



Item	CTC	Length	Width	Projection	Price
357 4	96mm	4 1/4"	7/8"	7/8"	\$61.00
357 6	5 1/2"	6"	7/8"	7/8"	\$67.30
357 9	8 1/2"	9"	7/8"	7/8"	\$79.70





**Textured Pull**

Item	CTC	Length	Width	Projection	Price
3425 5 3/4	96mm	5 3/4"	5/8"	1 1/8"	\$62.90
3425 8 1/8	6"	8"	5/8"	1 1/8"	\$72.10
3425 10 1/8	8"	10"	5/8"	1 1/8"	\$81.10
3425 12 1/8	10"	12"	5/8"	1 1/8"	\$90.00

**Axiom Pull**

Item	CTC	Length	Width	Projection	Price
3363 4 1/4	96mm	4 1/4"	1/2"	1 1/4"	\$57.60
3363 6 1/2	6"	6 1/2"	1/2"	1 1/4"	\$64.10
3363 8 1/2	8"	8 1/2"	1/2"	1 1/4"	\$70.60
3363 10 1/2	10"	10 1/2"	1/2"	1 1/4"	\$76.60



**'T' Pull**

Item	CTC	Length	Width	Projection	Price
317 4 1/2	96mm	4 1/2"	5/8"	1 1/4"	\$56.90
317 6 3/4	6"	6 3/4"	5/8"	1 1/4"	\$66.20
317 8 3/4	8"	8 3/4"	5/8"	1 1/4"	\$78.00
317 10 3/4	10"	10 3/4"	5/8"	1 1/4"	\$87.20





**Hex Profile Cabinet Pull**

Item	CTC	Length	Width	Projection	Price
4473 4	96mm	4 ¼"	½"	1 ⅜"	\$60.10
4473 6	6"	6 ½"	½"	1 ⅜"	\$67.50
4473 8	8"	8 ½"	½"	1 ⅜"	\$75.20
4473 10	10"	10 ½"	½"	1 ⅜"	\$84.00



**Algave Cabinet Pull**

Item	CTC	Length	Width	Projection	Price
3405 4	96mm	4 ¼"	7/8"	1 ¼"	\$53.20
3405 6	6"	6 ⅜"	7/8"	1 ¼"	\$62.60
3405 8	8"	8 ⅜"	7/8"	1 ¼"	\$72.20
3405 10	10"	10 ⅜"	7/8"	1 ¼"	\$80.90



**Abigail Cabinet Pull**

Item	CTC	Length	Width	Projection	Price
3360 4	96mm	4 ¼"	⅜"	1 ¼"	\$54.70
3360 6	6"	6 ½"	⅜"	1 ¼"	\$61.00
3360 8	8"	8 ½"	⅜"	1 ¼"	\$67.40
3360 10	10"	10 ½"	⅜"	1 ¼"	\$73.40



**Bradley Cabinet Pull**

Item	CTC	Length	Width	Projection	Price
3295 4	96mm	4 1/4"	1/2"	1 3/8"	\$60.10
3295 6	6"	6 3/8"	1/2"	1 3/8"	\$67.50
3295 8	8"	8 3/8"	1/2"	1 3/8"	\$75.20
3295 10	10"	10 3/8"	1/2"	1 3/8"	\$84.00



**Hadley Cabinet Pull**

Item	CTC	Length	Width	Projection	Price
3250 4	96mm	4 3/8"	5/8"	1 3/8"	\$53.20
3250 6	6"	6 5/8"	5/8"	1 3/8"	\$62.60
3250 8	8"	8 5/8"	5/8"	1 3/8"	\$72.20
3250 10	10"	10 5/8"	5/8"	1 3/8"	\$80.80



**Bow Cabinet Pull**

Item	CTC	Length	Thickness	Projection	Price
3512 4	96mm	4 1/4"	1/2"	1 1/4"	\$53.20
3512 6	6"	6 1/2"	5/8"	1 1/4"	\$62.60
3512 8	8"	8 1/2"	5/8"	1 1/4"	\$72.20
3512 10	10"	10 1/2"	5/8"	1 1/4"	\$80.90

**Tuscany Pull**

Item	CTC	Length	Thickness	Projection	Price
340 4 1/2	96mm	4 1/2"	5/8"	1 5/8"	\$59.00
340 6 3/4	6"	6 3/4"	5/8"	1 5/8"	\$67.30
340 8 3/4	8"	8 3/4"	5/8"	1 5/8"	\$78.00
340 10 3/4	10"	10 3/4"	5/8"	1 5/8"	\$87.20



**Aztec Pull**

Item	CTC	Length	Width	Projection	Price
396 5 1/4	96mm	5 1/4"	5/8"	1 1/4"	\$61.60
396 7 1/2	6"	7 1/2"	5/8"	1 1/4"	\$72.10



**Rope Pull**

Item	CTC	Length	Thickness	Projection	Price
301 5 1/4	96mm	5 1/4"	1/2"	1 3/8"	\$54.40
301 7 1/2	5 1/2"	7 1/2"	1/2"	1 3/8"	\$61.00
301 9 1/2	7"	9 1/2"	1/2"	1 3/8"	\$67.80
301 11 1/2	8 1/2"	11 1/2"	1/2"	1 3/8"	\$74.70





Fleur-de-Lis Pull				
Item	Length	Width	Projection	Price
1092 4	4"	3/8"	1"	\$41.70
1092 6	6"	3/8"	1"	\$49.50
1092 8	8"	3/8"	1"	\$57.60
1092 10	10"	3/8"	1"	\$65.40



Sash Pull				
Item	Length	Width	Projection	Price
1090 4	4"	3/8"	1"	\$34.50
1090 6	6"	3/8"	1 1/4"	\$42.80
1090 8	8"	3/8"	1 3/8"	\$50.70
1090 10	10"	3/8"	1 3/8"	\$58.80



Twist Pull				
Item	Length	Thickness	Projection	Price
370 5 5/8	5 5/8"	3/8"	1 1/8"	\$54.10
370 8	8"	3/8"	1 1/8"	\$66.60
370 10	10"	3/8"	1 1/8"	\$73.10

**Traditional Pull**

Item	CTC	Length	Thickness	Projection	Price
376 5	96mm	5"	3/8"	1 1/4"	\$53.90
376 7 1/4	6"	7 1/4"	3/8"	1 1/4"	\$63.20
376 9 1/4	8"	9 1/4"	3/8"	1 1/4"	\$72.90
376 11 1/4	10"	11 1/4"	3/8"	1 1/4"	\$82.50
376 13 1/4	12"	13 1/4"	3/8"	1 1/4"	\$92.10
376 17 1/4	16"	17 1/4"	1/2"	1 1/4"	\$113.00



Item	Length	Pull Width	Projection	Price
1142 7	6 7/8"	3/4"	1 3/4"	\$80.10
1142 9	9"	3/4"	1 3/4"	\$92.80

Plate Width: 1 1/8"



Item	Length	Pull Width	Projection	Price
1145 6 1/4	6 1/4"	1/2"	1 1/2"	\$53.10
1145 8 1/4	8 1/4"	1/2"	1 1/2"	\$59.20
1145 10 1/4	10 1/4"	1/2"	1 1/2"	\$65.40

Plate Width: 1"



Item	CTC	Length	Width	Projection	Price
341 4 1/4	96mm	4 1/4"	3/4"	1 1/4"	\$60.10
341 6 1/2	6"	6 1/2"	3/4"	1 1/4"	\$69.00
341 8 1/2	8"	8 1/2"	3/4"	1 1/4"	\$77.70
341 10 1/2	10"	10 1/2"	3/4"	1 1/4"	\$86.90

**Avon Pull**

Item	Length	Width	Projection	Price
3378 6	6"	3/8"	1 1/4"	\$54.10
3378 8	8"	3/8"	1 1/4"	\$60.10

Foot Size: 1 1/8 x 1"



**Pyramid Pull**

Item	CTC	Length	Width	Projection	Price
3626 6 1/4	96mm	6 1/4"	1"	1 1/8"	\$69.80
3626 9	6 1/2"	9"	1"	1 1/8"	\$85.30



**Straight Pull**

Item	CTC	Length	Width	Projection	Price
361 5 1/4	96mm	5 1/4"	1/2"	1 3/8"	\$54.10
361 7 1/2	5 1/2"	7 1/2"	1/2"	1 3/8"	\$60.60
361 9 1/2	7"	9 1/2"	1/2"	1 3/8"	\$66.90
361 11 1/2	8 1/2"	11 1/2"	1/2"	1 3/8"	\$74.90



**Tapered Pull**

Item	CTC	Length	Width	Projection	Price
351 5 1/4	96mm	5 1/4"	1/2"	1 3/8"	\$54.10
351 7 1/2	5 1/2"	7 1/2"	1/2"	1 3/8"	\$60.60
351 9 1/2	7"	9 1/2"	1/2"	1 3/8"	\$66.90
351 11 1/2	8 1/2"	11 1/2"	1/2"	1 3/8"	\$74.90



**Traditional Hex Pull**

Item	CTC	Length	Width	Projection	Price
371 5	96mm	4 7/8"	1/2"	1 3/8"	\$54.10
371 7 1/2	5 1/2"	7 1/2"	1/2"	1 3/8"	\$60.60
371 9 1/2	7"	9 1/2"	1/2"	1 3/8"	\$66.90
371 11 1/2	8 1/2"	11 1/2"	1/2"	1 3/8"	\$74.90





'D' Pull Item	CTC	Length	Width	Projection	Price
331 4 1/4	96mm	4 1/4"	1/2"	1 3/8"	\$54.10
331 6 1/2	6"	6 1/2"	1/2"	1 3/8"	\$60.60
331 8 1/2	8"	8 1/2"	1/2"	1 3/8"	\$66.90
331 10 1/2	10"	10 1/2"	1/2"	1 3/8"	\$74.90
331 16 1/2	16"	16 1/2"	1/2"	1 3/8"	\$114.00



Arc Pull Item	CTC	Length	Width	Projection	Price
3402 4 5/8	96mm	4 5/8"	3/4"	1 1/8"	\$60.10
3402 6 3/4	6"	6 3/4"	3/4"	1 1/8"	\$67.50
3402 8 3/4	8"	8 3/4"	3/4"	1 1/8"	\$75.20
3402 10 3/4	10"	10 3/4"	3/4"	1 1/8"	\$83.70



Deco Pull Item	CTC	Length	Width	Projection	Price
3334 4 3/8	96mm	4 3/8"	1"	1 1/4"	\$60.10
3334 6 5/8	6"	6 5/8"	1"	1 1/4"	\$67.50
3334 8 5/8	8"	8 5/8"	1"	1 1/4"	\$75.20
3334 10 5/8	10"	10 5/8"	1"	1 1/4"	\$83.90



**Bauhaus Pull**

Item	CTC	Length	Width	Projection	Price
3312 4 3/8	96mm	4 3/8"	5/8"	1 3/8"	\$59.80
3312 6 5/8	6"	6 5/8"	5/8"	1 3/8"	\$69.00
3312 8 5/8	8"	8 5/8"	5/8"	1 3/8"	\$80.90
3312 10 5/8	10"	10 5/8"	5/8"	1 3/8"	\$89.70
3312 16 5/8	16"	16 5/8"	5/8"	1 3/8"	\$116.00



**Metro Pull**

Item	CTC	Length	Width	Projection	Price
3476 4 1/8	96mm	4 1/8"	3/4"	1 1/8"	\$56.70
3476 6 3/8	6"	6 3/8"	3/4"	1 1/8"	\$65.40
3476 8 3/8	8"	8 3/8"	3/4"	1 1/8"	\$74.40
3476 10 3/8	10"	10 3/8"	3/4"	1 1/8"	\$83.40



**Durham Pull**

Item	CTC	Length	Width	Projection	Price
3721 4 7/8	96mm	4 7/8"	5/8"	1 1/4"	\$56.40
3721 7 1/8	6"	7 1/8"	5/8"	1 1/4"	\$64.10
3721 9 1/8	8"	9 1/8"	5/8"	1 1/4"	\$71.20
3721 11 1/8	10"	11 1/8"	5/8"	1 1/4"	\$78.60



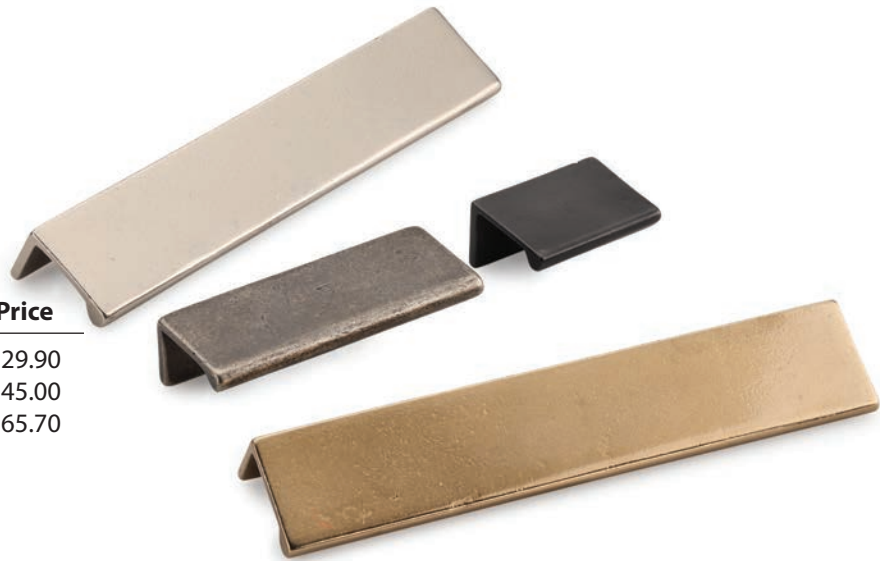
**Claros Pull**

Item	CTC	Length	Width	Projection	Price
3348 4 1/4	96mm	4 1/4"	1/4"	1 3/8"	\$57.60
3348 6 1/2	6"	6 1/2"	1/4"	1 3/8"	\$64.10
3348 8 1/2	8"	8 1/2"	1/4"	1 3/8"	\$70.60
3348 10 1/2	10"	10 1/2"	1/4"	1 3/8"	\$76.60

**Front Mount Edge Pull**

Item	Length	Height	Projection	Price
3384 1 1/2	1 1/2"	3/4"	1 1/8"	\$29.90
3384 3	3"	3/4"	1 1/8"	\$45.00
3384 6	6"	3/4"	1 1/8"	\$65.70

Installed with wood screws into face of cabinet



**Apollo Pull**

Item	CTC	Length	Width	Projection	Price
345 4 1/2	96mm	4 1/2"	3/8"	1 3/8"	\$55.20
345 6 3/4	6"	6 3/4"	3/8"	1 3/8"	\$61.60
345 8 3/4	8"	8 3/4"	3/8"	1 3/8"	\$68.00
345 10 3/4	10"	10 3/4"	3/8"	1 3/8"	\$74.00
345 12 3/4	12"	12 3/4"	3/8"	1 3/8"	\$82.90
345 16 3/4	16"	16 3/4"	7/16"	1 3/8"	\$110.00



**Urban Pull**

Item	CTC	Length	Width	Projection	Price
337 4 1/2	96mm	4 1/2"	3/8"	1 1/8"	\$56.70
337 6 3/4	6"	6 3/4"	3/8"	1 1/8"	\$63.20
337 8 3/4	8"	8 3/4"	3/8"	1 1/8"	\$69.40
337 10 3/4	10"	10 3/4"	3/8"	1 1/8"	\$75.80
337 12 3/4	12"	12 3/4"	3/8"	1 1/8"	\$84.40
337 16 3/4	16"	16 3/4"	1/2"	1 1/8"	\$111.00

**Wide Urban Pull**

Item	CTC	Length	Width	Projection	Price
338 4 1/8	96mm	4 1/8"	3/4"	1 1/8"	\$71.80
338 6 3/8	6"	6 3/8"	3/4"	1 1/8"	\$79.20
338 8 3/8	8"	8 3/8"	3/4"	1 1/8"	\$86.50
338 10 3/8	10"	10 3/8"	3/4"	1 1/8"	\$94.30



**'L' Pull**

Item	CTC	Length	Width	Projection	Price
347 4 1/2	96mm	4 1/2"	1 1/8"	7/8"	\$56.90
347 6 3/4	6"	6 3/4"	1 1/8"	7/8"	\$66.20
347 8 3/4	8"	8 3/4"	1 1/8"	7/8"	\$74.90
347 10 3/4	10"	10 3/4"	1 1/8"	7/8"	\$83.90





Angular Pull Item	CTC	Length	Width	Projection	Price
3465 4 1/4	96mm	4 1/4"	1/2"	1 1/4"	\$59.80
3465 6 3/8	6"	6 3/8"	1/2"	1 1/4"	\$69.00
3465 8 3/8	8"	8 3/8"	1/2"	1 1/4"	\$77.70
3465 10 3/8	10"	10 3/8"	1/2"	1 1/4"	\$86.90



Bar Pull Item	CTC	Length	Dia.	Projection	Price
3430 5 3/4	96mm	5 3/4"	1/2"	1 1/4"	\$60.40
3430 8 1/8	6"	8 1/8"	1/2"	1 1/4"	\$63.80
3430 10 1/8	8"	10 1/8"	1/2"	1 1/4"	\$70.30
3430 12 1/8	10"	12 1/8"	1/2"	1 1/4"	\$76.40



Linear Pull Item	CTC	Length	Width	Projection	Price
3480 4 1/8	96mm	4 1/8"	5/8"	1 1/4"	\$62.90
3480 6 3/8	6"	6 3/8"	5/8"	1 1/4"	\$71.80
3480 8 3/8	8"	8 3/8"	5/8"	1 1/4"	\$80.90
3480 10 3/8	10"	10 3/8"	5/8"	1 1/4"	\$89.70



**Artisinal Pull**

Item	CTC	Length	Width	Projection	Price
3325 4 1/2	96mm	4 1/2"	1/2"	1 1/2"	\$62.60
3325 6 3/4	6"	6 3/4"	1/2"	1 1/2"	\$71.80
3325 8 3/4	8"	8 3/4"	1/2"	1 1/2"	\$80.50
3325 10 3/4	10"	10 3/4"	1/2"	1 1/2"	\$89.70

**Urban Offset Pull**

Item	CTC	Length	Width	Projection	Price
3383 4 3/8	96mm	4 3/8"	5/8"	1 1/8"	\$65.70
3383 6 5/8	6"	6 5/8"	5/8"	1 1/8"	\$74.90
3383 8 5/8	8"	8 5/8"	5/8"	1 1/8"	\$83.70
3383 10 5/8	10"	10 5/8"	5/8"	1 1/8"	\$92.80

Offset: 1 5/8"



Item	Size	Pull CTC	Price
CPB.PL96	5 1/2 x 1 1/8"	96mm	\$38.40
CPB.PL152	7 1/2 x 1 1/8"	6"	\$54.10
CPB.PL203	8 1/2 x 1 1/8"	8"	\$61.40
CPB.PL254	10 1/2 x 1 1/8"	10"	\$76.20

**6272 Angled Drop Pull**

Item	CTC	Projection	Price
6272 4	96mm	1 1/8"	\$54.40
6272 5 1/2	5 1/2"	1 1/8"	\$62.40



**6269 Twist Drop Pull**

Item	CTC	Projection	Price
6269 4	96mm	1"	\$54.40
6269 5 1/2	5 1/2"	1"	\$62.40



**6267 Tuscany Drop Pull**

Item	CTC	Projection	Price
6267 4	96mm	3/4"	\$61.00
6267 5 1/2	5 1/2"	3/4"	\$70.60



**6266 Oval Drop Pull**

Item	CTC	Size	Projection	Price
6266	2 1/2"	3 3/4 x 1 7/8"	7/8"	\$64.10



**Audrey Drop Pull**

Item	Size	CTC	Projection	Price
6353	3 7/8 x 1 1/4"	1 1/4"	3/4"	\$67.30





**6367 Drop Pull**  
 Backplate: 2 x 2 1/2", Ring dia: 2"  
 Projection: 1"  
 Price: \$70.60



**6301 Drop Pull**  
 Backplate: 3 x 1 3/4", Ring dia: 2"  
 Projection: 1"  
 Price: \$61.00



**6270 Drop Pull**  
 Backplate: 3/4 x 7/8"  
 Drop length: 2", Projection: 7/8"  
 Price: \$38.20



**6263 Drop Pull**  
 Backplate: 3 1/8" x 1 3/8",  
 Drop length: 2 3/8", Projection: 1"  
 Price: \$49.30



**6261 Drop Pull**  
 Backplate tip to tip 2 1/4 x 2 1/4"  
 Length of side 1 5/8"  
 Drop length: 2 3/8", Projection: 1"  
 Price: \$44.70



**6264 Drop Pull**  
 Backplate diameter: 1 3/4"  
 Drop length: 2 1/4", Projection: 7/8"  
 Price: \$44.70



**Hex Drop Pull**

Item	Backplate Size	Drop Length	Projection	Price
6337	1 1/4"	2 3/8"	1"	\$44.10

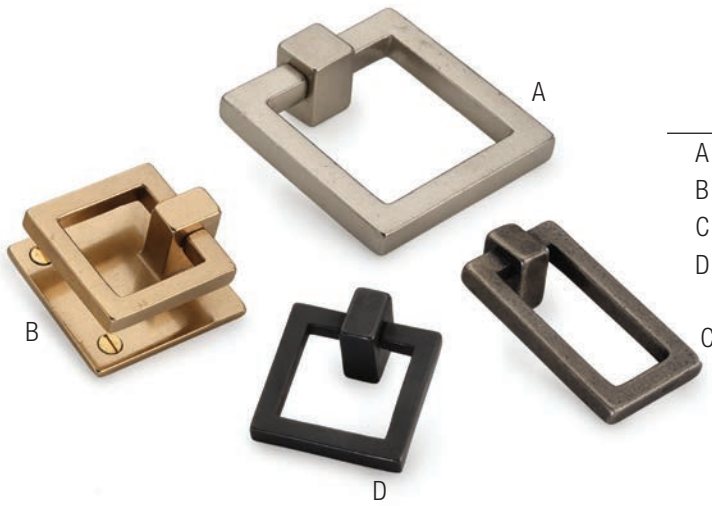




**6369 Drop Pull**  
 Tip to tip 2 1/4 x 2 1/4"  
 Length of side 1 5/8"  
 Ring dia: 1 5/8", Projecti  
 Price: \$44.70



**6331 Drop Pull**  
 Tip to tip 2 1/4 x 2 1/4"  
 Length of side 1 5/8"  
 Ring dia: 1 5/8", Projection: 1"  
 Price: \$44.70



Item	Size	Projection	Price
A 6356	2 1/2 x 2 1/2"	7/8"	\$63.60
B 6359	1 3/4 x 1 3/4"	7/8"	\$57.60
C 6351	2 1/4 x 1 1/4"	3/4"	\$41.70
D 6355	1 1/2 x 1 1/2"	3/4"	\$31.90



**6361 Drop Pull**  
 Ring diameter: 1 5/8"  
 Projection: 3/4"  
 Price: \$29.10



**6265 Drop Pull**  
 Size: 3 1/2 x 1 5/8"  
 Projection: 1/2"  
 Price: \$41.70

**Nora Drop Pull**

Item	Backplate Dia.	Ring Dia.	Projection	Price
6334 1 1/8"	1"	1 1/4"	3/4"	\$42.70
6334 1 5/8"	1 1/8"	1 5/8"	3/4"	\$55.20



### Urban Appliance Pull

Item	CTC	Length	Handle Size	Projection
1390 9	8"	8 ¾"	1 x ¾"	2"
1390 12	11"	12"	1 x ¾"	2"
1390 18	17"	18"	1 x ¾"	2"
1390 24	22 ¾"	24"	1 x ¾"	2"



Thru Bolt		Surface Mount <sup>1</sup>		Back to Back Pair <sup>2</sup>	
Item	Price	Item	Price	Item	Price
1390 9-TB	\$308	1390 9-SM	\$348	1390 9-BTB	\$656
1390 12-TB	\$392	1390 12-SM	\$432	1390 12-BTB	\$824
1390 18-TB	\$499	1390 18-SM	\$539	1390 18-BTB	\$1,038
1390 24-TB	\$664	1390 24-SM	\$704	1390 24-BTB	\$1,368

### Claros Appliance Pull

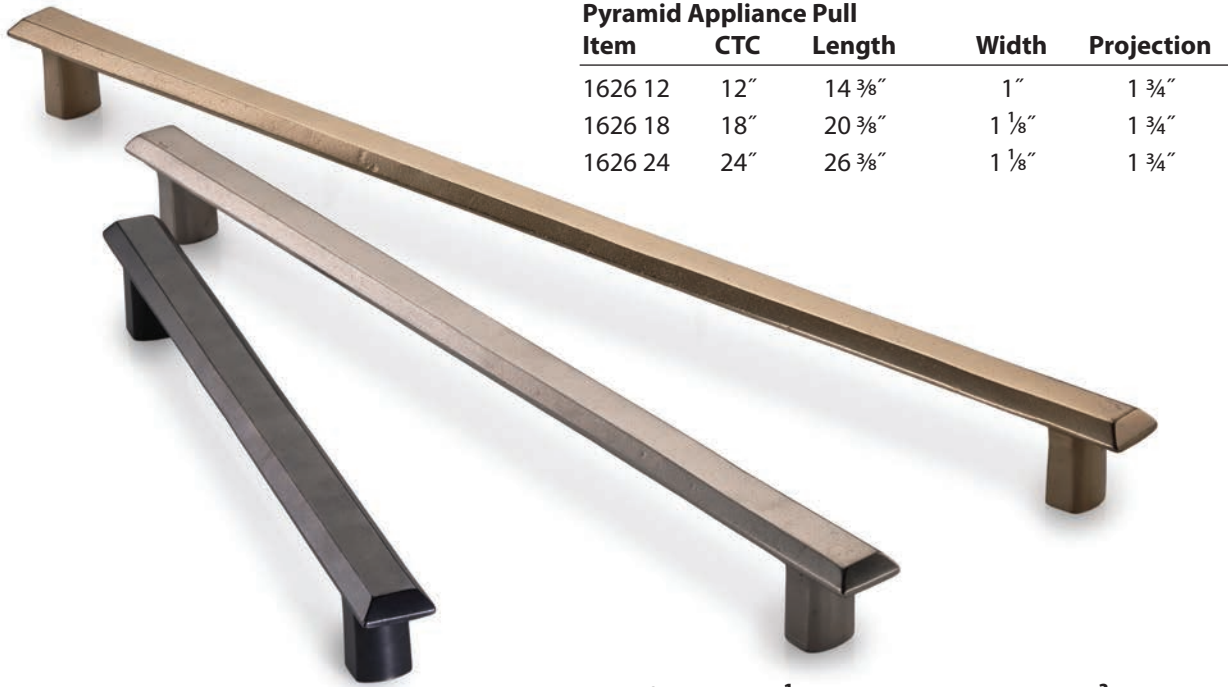
Item	CTC	Length	Handle Size	Projection
1348 12	12"	13"	1 x ¾"	2 ½"
1348 18	18"	19"	1 x ¾"	2 ½"
1348 24	24"	25 ¼"	1 x 1 ¼"	2 7/8"



Thru Bolt		Surface Mount <sup>1</sup>		Back to Back Pair <sup>2</sup>	
Item	Price	Item	Price	Item	Price
1348 12-TB	\$375	1348 12-SM	\$415	1348 12-BTB	\$790
1348 18-TB	\$491	1348 18-SM	\$531	1348 18-BTB	\$1,022
1348 24-TB	\$662	1348 24-SM	\$702	1348 24-BTB	\$1,364

(1) Suitable only for solid wood doors with minimum thickness of 1 ¼"

(2) Maximum door thickness for Back-to-Back fixing: 3"



Pyramid Appliance Pull				
Item	CTC	Length	Width	Projection
1626 12	12"	14 3/8"	1"	1 3/4"
1626 18	18"	20 3/8"	1 1/8"	1 3/4"
1626 24	24"	26 3/8"	1 1/8"	1 3/4"

Thru Bolt		Surface Mount <sup>1</sup>		Back to Back Pair <sup>2</sup>	
Item	Price	Item	Price	Item	Price
1626 12-TB	\$361	1626 12-SM	\$401	1626 12-BTB	\$762
1626 18-TB	\$464	1626 18-SM	\$504	1626 18-BTB	\$968
1626 24-TB	\$618	1626 24-SM	\$658	1626 24-BTB	\$1,276

**Hadley Appliance pull**

Item	CTC	Length	Width	Projection
1259 12	12"	13"	7/8"	2 3/8"
1259 18	18"	19"	1"	2 3/8"
1259 24	24"	25"	1"	2 3/8"



Thru Bolt		Surface Mount <sup>1</sup>		Back to Back Pair <sup>2</sup>	
Item	Price	Item	Price	Item	Price
1259 12-TB	\$361	1259 12-SM	\$401	1259 12-BTB	\$762
1259 18-TB	\$464	1259 18-SM	\$504	1259 18-BTB	\$968
1259 24-TB	\$618	1259 24-SM	\$658	1259 24-BTB	\$1,276

(1) Suitable only for solid wood doors with minimum thickness of 1 1/4"  
 (2) Maximum door thickness for Back-to-Back fixing: 3"

### Deco Appliance Pull

Item	CTC	Length	Handle Size	Projection
1334 12	12"	13"	1 x 5/8"	2"
1334 18	18"	19"	1 x 5/8"	2"
1334 24	24"	25 1/4"	1 x 5/8"	2"

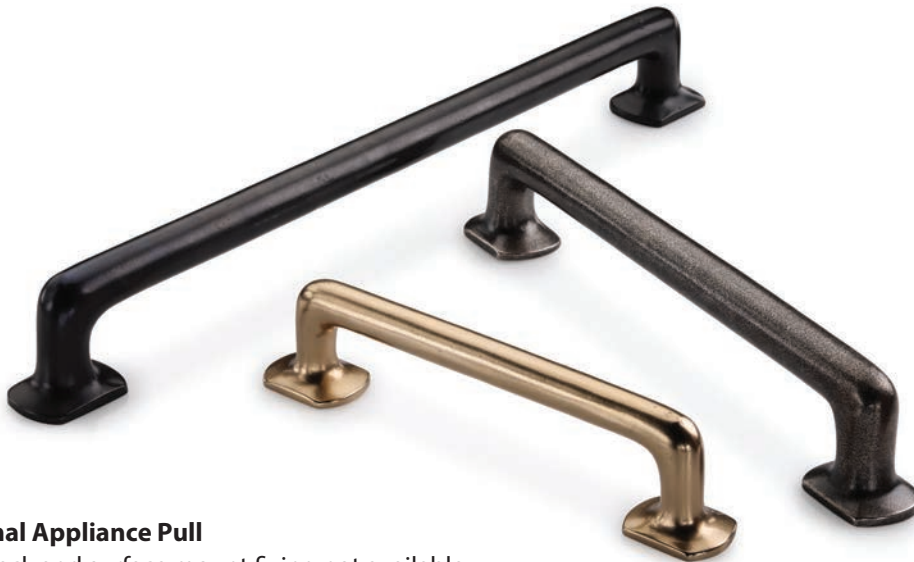


#### Thru Bolt

#### Surface Mount <sup>1</sup>

#### Back to Back Pair <sup>2</sup>

Item	Price	Item	Price	Item	Price
1334 12-TB	\$361	1334 12-SM	\$401	1334 12-BTB	\$762
1334 18-TB	\$464	1334 18-SM	\$504	1334 18-BTB	\$968
1334 24-TB	\$618	1334 24-SM	\$658	1334 24-BTB	\$1,276



### Traditional Appliance Pull

Back to back and surface mount fixing not available

Item	CTC	Length	Width	Projection	Thru Bolt	Price
1376 9	8"	9 1/4"	3/4"	2 1/4"	1376 9-TB	\$308
1376 12	11"	12 1/2"	1"	2 1/2"	1376 12-TB	\$392
1376 18	17"	19"	1"	2 1/2"	1376 18-TB	\$499
1376 24	22 3/4"	24 1/2"	1 1/4"	2 1/2"	1376 24-TB	\$664

(1) Suitable only for solid wood doors with minimum thickness of 1 1/4"

(2) Maximum door thickness for Back-to-Back fixing: 3"



**Tuscany Appliance Pull**

Item	CTC	Length	Dia.	Projection
1340 12	11"	12"	1"	2 ¼"
1340 18	17"	18"	1"	2 ¼"



Thru Bolt		Surface Mount <sup>1</sup>		Back to Back Pair <sup>2</sup>	
Item	Price	Item	Price	Item	Price
1340 12-TB	\$361	1340 12-SM	\$401	1340 12-BTB	\$762
1340 18-TB	\$464	1340 18-SM	\$504	1340 18-BTB	\$968

**Apollo Appliance Pull**

Item	CTC	Length	Handle Size	Projection
1450 9	8"	8¾"	5/8 x 1"	2 3/8"
1450 12	11"	12"	5/8 x 1"	2 3/8"
1450 18	17"	18"	5/8 x 1"	2 3/8"
1450 24	22 ¾"	24"	5/8 x 1"	2 3/8"



Thru Bolt		Surface Mount <sup>1</sup>		Back to Back Pair <sup>2</sup>	
Item	Price	Item	Price	Item	Price
1450 9-TB	\$294	1450 9-SM	\$334	1450 9-BTB	\$628
1450 12-TB	\$366	1450 12-SM	\$406	1450 12-BTB	\$772
1450 18-TB	\$473	1450 18-SM	\$513	1450 18-BTB	\$986
1450 24-TB	\$662	1450 24-SM	\$702	1450 24-BTB	\$1,364

(1) Suitable only for solid wood doors with minimum thickness of 1 ¼"

(2) Maximum door thickness for Back-to-Back fixing: 3"

### Rope Appliance Pull

Item	CTC	Length	Handle Size	Projection
1300 12	7 ¼"	12"	1"	2 ¼"
1300 18	11 ½"	18"	1"	2 ¾"
1300 24	15 ¾"	24"	1 ¼"	2 ½"



Thru Bolt		Surface Mount <sup>1</sup>		Back to Back Pair <sup>2</sup>	
Item	Price	Item	Price	Item	Price
1300 12-TB	\$361	1300 12-SM	\$401	1300 12-BTB	\$762
1300 18-TB	\$464	1300 18-SM	\$504	1300 18-BTB	\$968
1300 24-TB	\$618	1300 24-SM	\$658	1300 24-BTB	\$1,276

### Tapered Appliance Pull

Item	CTC	Length	Handle Size	Projection
1350 9	5 ½"	8 ½"	¾"	2"
1350 12	7 ¼"	12"	1"	2 ¼"
1350 18	11 ½"	18"	1"	2 ¾"
1350 24	15 ¾"	24"	1 ¼"	2 ½"



Thru Bolt		Surface Mount <sup>1</sup>		Back to Back Pair <sup>2</sup>	
Item	Price	Item	Price	Item	Price
1350 9-TB	\$259	1350 9-SM	\$299	1350 9-BTB	\$558
1350 12-TB	\$361	1350 12-SM	\$401	1350 12-BTB	\$762
1350 18-TB	\$464	1350 18-SM	\$504	1350 18-BTB	\$968
1350 24-TB	\$618	1350 24-SM	\$658	1350 24-BTB	\$1,276

(1) Suitable only for solid wood doors with minimum thickness of 1 ¼"

(2) Maximum door thickness for Back-to-Back fixing: 3"



**'D' Appliance Pull**

Item	CTC	Length	Handle Size	Projection
1330 9	8"	8¾"	¾"	2"
1330 12	11"	12"	1"	2 ¼"
1330 18	17"	18"	1"	2 ¾"
1330 24	22 ¾"	24"	1 ¼"	2 ½"

**Thru Bolt**

**Surface Mount <sup>1</sup>**

**Back to Back Pair <sup>2</sup>**

Item	Price	Item	Price	Item	Price
1330 9-TB	\$299	1330 9-SM	\$339	1330 9-BTB	\$638
1330 12-TB	\$375	1330 12-SM	\$415	1330 12-BTB	\$790
1330 18-TB	\$491	1330 18-SM	\$531	1330 18-BTB	\$1,022
1330 24-TB	\$662	1330 24-SM	\$702	1330 24-BTB	\$1,364

**Traditional Hex Appliance Pull**

Item	CTC	Length	Handle Size	Projection
1310 9	5 ½"	8 ½"	¾"	2 ¼"
1310 12	7 ¼"	12"	1"	2 ¼"
1310 18	11 ½"	18"	1"	2 ¾"
1310 24	15 ¾"	24"	1 ¼"	2 ½"



**Thru Bolt**

**Surface Mount <sup>1</sup>**

**Back to Back Pair <sup>2</sup>**

Item	Price	Item	Price	Item	Price
1310 9-TB	\$299	1310 9-SM	\$339	1310 9-BTB	\$638
1310 12-TB	\$375	1310 12-SM	\$415	1310 12-BTB	\$790
1310 18-TB	\$491	1310 18-SM	\$531	1310 18-BTB	\$1,022
1310 24-TB	\$662	1310 24-SM	\$702	1310 24-BTB	\$1,364

(1) Suitable only for solid wood doors with minimum thickness of 1 ¼"

(2) Maximum door thickness for Back-to-Back fixing: 3"

### Durham Appliance Pull

Item	CTC	Length	Handle Size	Projection
1721 12	12"	13 ½"	1 x ¾"	2 ⅛"
1721 18	18"	19 ½"	1 x ¾"	2 ⅛"
1721 24	24"	25 ½"	1 x ¾"	2 ⅛"



#### Thru Bolt

#### Surface Mount <sup>1</sup>

#### Back to Back Pair <sup>2</sup>

Item	Price	Item	Price	Item	Price
1721 12-TB	\$375	1721 12-SM	\$415	1721 12-BTB	\$790
1721 18-TB	\$491	1721 18-SM	\$531	1721 18-BTB	\$1,022
1721 24-TB	\$662	1721 24-SM	\$702	1721 24-BTB	\$1,364

### Offset Urban Appliance Pull

Item	CTC	Length	Handle	Offset	Projection
1383 12	12"	13"	1 x ⅝"	3"	2"
1383 18	18"	19"	1 x ⅝"	3"	2"
1383 24	24"	25"	1 x ⅝"	3"	2"



#### Thru Bolt

#### Surface Mount <sup>1</sup>

#### Back to Back Pair <sup>2</sup>

Item	Price	Item	Price	Item	Price
1383 12-TB	\$399	1383 12-SM	\$439	1383 12-BTB	\$838
1383 18-TB	\$517	1383 18-SM	\$557	1383 18-BTB	\$1,074
1383 24-TB	\$685	1383 24-SM	\$725	1383 24-BTB	\$1,410

(1) Suitable only for solid wood doors with minimum thickness of 1 ¼"

(2) Maximum door thickness for Back-to-Back fixing: 3"



### Bauhaus Appliance Pull

Item	CTC	Length	Handle Size	Projection
1312 12	12"	13"	1"	2 3/8"
1312 18	18"	19"	1"	2 3/8"
1312 24	24"	25"	1"	2 3/8"



Thru Bolt		Surface Mount <sup>1</sup>		Back to Back Pair <sup>2</sup>	
Item	Price	Item	Price	Item	Price
1312 12-TB	\$375	1312 12-SM	\$415	1312 12-BTB	\$790
1312 18-TB	\$491	1312 18-SM	\$531	1312 18-BTB	\$1,022
1312 24-TB	\$662	1312 24-SM	\$702	1312 24-BTB	\$1,364

### Bar Appliance Pull

Item	CTC	Length	Handle Size	Projection
1430 12	8"	12 3/4"	1"	2 3/4"
1430 18	12"	18 1/2"	1"	2 3/4"
1430 24	16"	24 1/2"	1"	2 3/4"



Thru Bolt		Surface Mount <sup>1</sup>		Back to Back Pair <sup>2</sup>	
Item	Price	Item	Price	Item	Price
1430 12-TB	\$375	1430 12-SM	\$415	1430 12-BTB	\$790
1430 18-TB	\$491	1430 18-SM	\$531	1430 18-BTB	\$1,022
1430 24-TB	\$662	1430 24-SM	\$702	1430 24-BTB	\$1,364

(1) Suitable only for solid wood doors with minimum thickness of 1 1/4"

(2) Maximum door thickness for Back-to-Back fixing: 3"



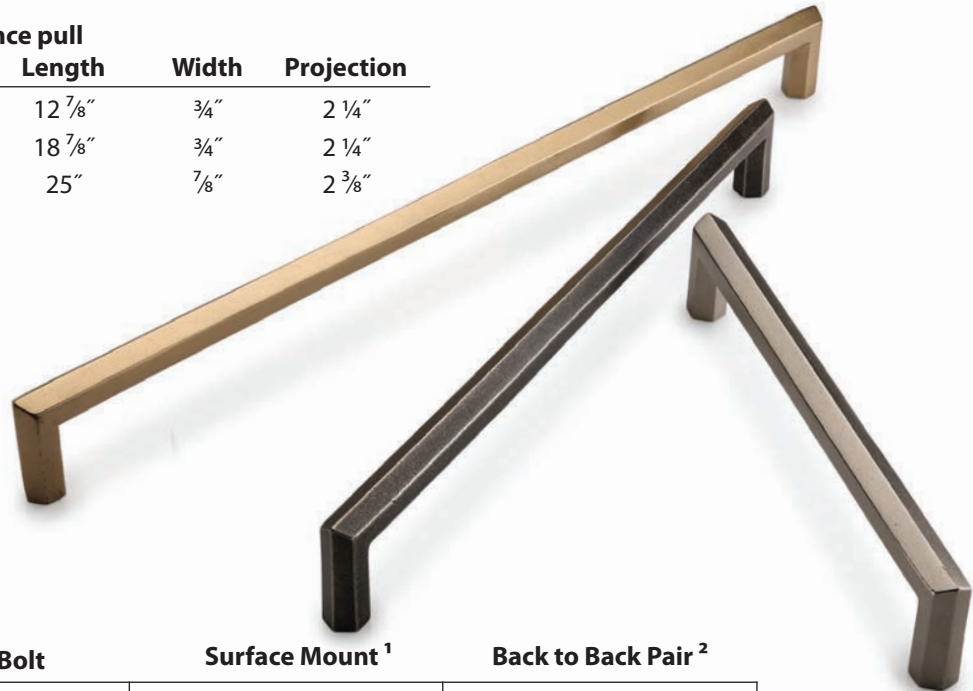
**Artisanal Appliance Pull**

Item	CTC	Length	Width	Projection
1325 12	12"	12 7/8"	3/4"	2 1/4"
1325 18	18"	19"	3/4"	2 1/4"
1325 24	24"	25"	7/8"	2 1/4"

Thru Bolt		Surface Mount <sup>1</sup>		Back to Back Pair <sup>2</sup>	
Item	Price	Item	Price	Item	Price
1325 12-TB	\$375	1325 12-SM	\$415	1325 12-BTB	\$790
1325 18-TB	\$491	1325 18-SM	\$531	1325 18-BTB	\$1,022
1325 24-TB	\$662	1325 24-SM	\$702	1325 24-BTB	\$1,364

**Hex Profile Appliance pull**

Item	CTC	Length	Width	Projection
1473 12	12"	12 7/8"	3/4"	2 1/4"
1473 18	18"	18 7/8"	3/4"	2 1/4"
1473 24	24"	25"	7/8"	2 3/8"



Thru Bolt		Surface Mount <sup>1</sup>		Back to Back Pair <sup>2</sup>	
Item	Price	Item	Price	Item	Price
1473 12-TB	\$392	1473 12-SM	\$432	1473 12-BTB	\$824
1473 18-TB	\$499	1473 18-SM	\$539	1473 18-BTB	\$1,038
1473 24-TB	\$664	1473 24-SM	\$704	1473 24-BTB	\$1,368

(1) Suitable only for solid wood doors with minimum thickness of 1 1/4"

(2) Maximum door thickness for Back-to-Back fixing: 3"



**395 Hook**  
 1 5/8" x 2" – projection 2 1/4"  
 Price: \$48.70



**387 Hook**  
 1 1/8" x 1 3/4" – projection 2 5/8"  
 Price: \$42.20



**386 Hook**  
 2 3/4" x 1 3/8" – projection 1 1/2"  
 Price: \$53.00



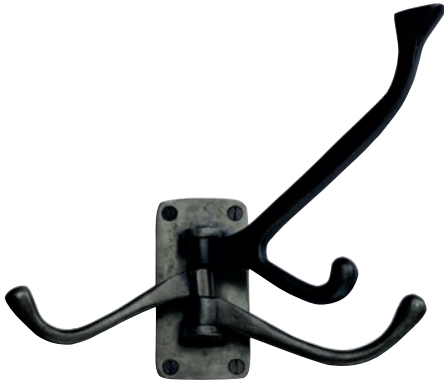
**400 Hook**  
 1 5/8" x 5 3/4" – projection 3 1/4"  
 Price: \$61.50



**405 Hook**  
 6 1/4" x 2" – projection 2 1/2"  
 Price: \$65.90



**404 Hook**  
 1 3/8" x 4 5/8" – projection 3 3/4"  
 Price: \$61.50



**397 Hook**  
 3 1/4" x 1 5/8" – projection 5 3/4"  
 Price: \$91.70



**406 Hook**  
 5 1/8" x 1 1/4" – projection 1 7/8"  
 Price: \$61.50



**407 Hook**  
 3 1/4" x 1 1/4" – projection 3 1/4"  
 Price: \$61.50



**408 Hook**  
 1" x 2 3/8" – projection 2"  
 Price: \$48.70



**409 Hook**  
 1" x 5 1/8" – projection 3 1/4"  
 Price: \$61.50

# SOLID BRASS

---

Ashley Norton's Solid Brass cabinet hardware is forged to ensure exceptional finish quality and product durability. Solid Brass cabinet knobs and pulls are available in six finishes. Oil Rubbed Bronze and Polished Nickel are dynamic. These 'living finishes' will take on unique hues as age, climate and touch work their charm, creating an ever-changing patina.



**Satin Nickel**  
**GSN**



**Polished Chrome**  
**PCH**



**Polished Nickel**  
**PNI**  
Living Finish



**Oil Rubbed Bronze**  
**DOR**  
Living Finish



**Satin Brass**  
**MSB**



**Flat Black**  
**BLK**





Item	Dia.	Base	Projection	Price
MT4549-032	1 1/4"	5/8"	1 1/8"	\$33.70



Item	Dia.	Base	Projection	Price
MT4648-032	1 1/4"	5/8"	1 1/8"	\$38.60



Item	Dia.	Base	Projection	Price
MT4547-032	1 1/4"	1/2"	1 1/4"	\$34.40



**Newport Knob**

Item	Dia.	Base	Projection	Price
MT3990-032	1 1/4"	5/8"	1 1/8"	\$18.10
MT3990-038	1 1/2"	5/8"	1 1/4"	\$25.60



**Bead Knob**

Item	Dia.	Base	Projection	Price
MT3985-032	1 1/4"	5/8"	1 1/4"	\$18.10
MT3985-038	1 1/2"	5/8"	1 1/4"	\$25.60



Item	Dia.	Base	Projection	Price
MT2238-032	1 1/4"	5/8"	1 3/8"	\$18.40



**Helios Knob**

Item	Dia.	Base	Projection	Price
MT3880-032	1 1/4"	7/16"	1 1/8"	\$14.30
MT3880-038	1 1/2"	7/16"	1 1/8"	\$19.50



**Knurled Helios Knob**

Item	Dia.	Base	Projection	Price
MT3884-032	1 1/4"	7/16"	1 1/8"	\$20.70
MT3884-038	1 1/2"	7/16"	1 1/8"	\$25.90



**Item**

Item	Dia.	Rose	Projection	Price
MT3885-032	1 1/4"	13/16"	1 1/4"	\$18.10
MT3885-038	1 1/2"	13/16"	1 1/4"	\$23.30

Rose included with MT3885 knob. To order rose for use with other knobs, order MT42RD-020 \$6.50



**Tayo Knob**

Item	Dia.	Base	Projection	Price
MT3875-032	1 1/4"	5/16"	1 1/4"	\$19.50
MT3875-038	1 1/2"	5/16"	1 1/4"	\$25.10



**Item**

Item	Dia.	Base	Projection	Price
MT3877-032	1 1/4"	5/16"	1 1/4"	\$35.60
MT3877-038	1 1/2"	5/16"	1 1/4"	\$41.30



**Item**

Item	Side to Side	Edge to Edge	Base	Projection	Price
MT4334-036	1 1/4"	1 3/8"	7/16"	1 3/16"	\$17.00
MT4334-043	1 1/2"	1 3/4"	7/16"	1 3/16"	\$22.40



Item	Side to Side	Edge to Edge	Base	Projection	Price
MT4335-036	1 1/4"	1 3/8"	13/16"	1 1/4"	\$20.80
MT4335-043	1 1/2"	1 3/4"	13/16"	1 1/4"	\$26.20

Rose included with MT4335 knob. To order rose for use with other knobs, order MT42HX-020 \$7.70



Item	Length	Width	Base	Projection	Price
MT4670-044	1 3/4"	7/16"	3/4"	1 1/4"	\$15.60



Item	Size	Base	Projection	Price
MT3685-032	1 1/4 x 1 1/4"	3/8"	1 1/8"	\$16.90
MT3685-038	1 1/2 x 1 1/2"	3/8"	1 1/8"	\$22.10



Item	Dia.	Base	Projection	Price
MT3975-040	1 5/8"	5/8"	13/16"	\$28.40



Item	Dia.	Base	Projection	Price
MT3850-020	13/16"	3/4"	1 1/4"	\$26.70



Item	Dia.	Base	Projection	Price
MT3840-020	13/16"	3/4"	1 1/4"	\$26.70



**Hudson Knob**

Item	Size	Base	Projection	Price
MT4382-025	1"	5/8"	15/16"	\$21.70
MT4382-035	1 3/8"	5/8"	15/16"	\$28.20

Cannot be used with backplates



Item	Dia.	Base	Projection	Price
MT3950-032	1 1/4"	3/4"	1 3/16"	\$25.60
MT3950-038	1 1/2"	3/4"	1 3/16"	\$33.40



Item	Length	CTC	Width	Projection	Price
MT4465-032	1 9/16"	1 1/4"	1 9/16"	1 9/16"	\$18.60



Item	Dia.	Projection	Price
MT4553-040	1 9/16"	1 1/2"	\$16.90



Item	Dia.	Base	Projection	Price
MT3624-032	1 1/4"	5/8"	1"	\$20.90
MT3624-038	1 1/2"	7/8"	1"	\$27.20



Item	Size	Base	Projection	Price
MT3672-032	1 1/4"	5/8"	1"	\$23.70

Cannot be used with backplates





Item	Length	Width	Base	Projection	Price
MT2234-035	1 3/8"	1/2"	1/2"	1 1/4"	\$14.90

Cannot be used with backplates



Item	Length	Width	Base	Projection	Price
MT4423-040	1 5/8"	1/2"	5/16"	1 3/8"	\$16.10



**Deco Knob**

Item	Length	Width	Base	Projection	Price
MT0333-032	1 1/4"	7/8"	1 1/4"	1 1/8"	\$14.60

Cannot be used with backplates



**Anvil Knob**

Item	Length	Width	Base	Projection	Price
MT2232-035	1 3/8"	7/8"	5/8 x 3/4"	1 1/2"	\$20.90

Cannot be used with backplates



Item	Dia.	Base	Projection	Price
A MT0974-032	1 1/4"	5/8"	1 5/8"	\$22.80
B MT0973-032	1 1/4"	1 1/4"	1 3/4"	\$31.60



Item	Dia.	Base	Projection	Price
MT4545-032	1 1/4"	5/8"	1 1/8"	\$48.90



Item	Dia.	Base	Projection	Price
A MT0118-032	1 1/4"	5/8"	1 1/8"	\$12.70
B MT0118-038	1 1/2"	5/8"	1 1/4"	\$18.10
C MT0114-032	1 1/4"	1 1/4"	1 3/8"	\$19.80
D MT0114-038	1 1/2"	1 1/2"	1 1/2"	\$24.80



Item	Dia.	Base	Projection	Price
A MT0117-032	1 1/4"	5/8"	1 1/4"	\$13.40
B MT0117-038	1 1/2"	5/8"	1 1/4"	\$19.60
C MT0113-032	1 1/4"	1 1/4"	1 3/8"	\$20.90
D MT0113-038	1 1/2"	1 1/2"	1 5/8"	\$27.00



**MT42OV-063**  
2 1/2 x 1 3/8"  
Price: \$13.40



**MT42SQ-063**  
2 1/2 x 1 1/2"  
Price: \$13.40



**MT42SR-063**  
2 1/2 x 1 1/2"  
Price: \$13.40



**MT42MS-038**  
1 1/2 x 1 1/2"  
Price: \$10.60



**MT42FL-163**  
6 1/2 x 1 3/8"  
Price: \$13.40



Item	Length	CTC	Height	Projection	Price
MT2700-057	3 1/4"	2 1/4"	1 3/8"	3/4"	\$18.10



Item	Length	Height	Projection	Price
MT1700-000	3 3/4"	1 3/4"	3/4"	\$15.20

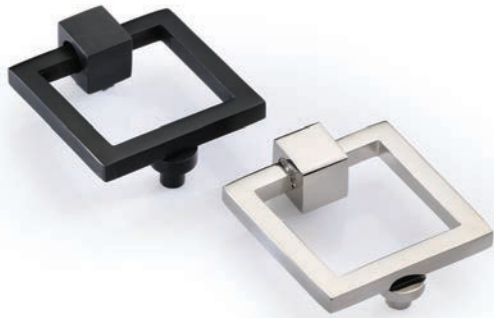


**Industrial Cup Pull**

Item	Length	CTC	Height	Projection	Price
MT2766-096	5 5/8"	3" or 3 3/4"	1 5/8"	7/8"	\$27.80
MT2766-152	8 3/4"	6" or 7"	1 5/8"	7/8"	\$37.90



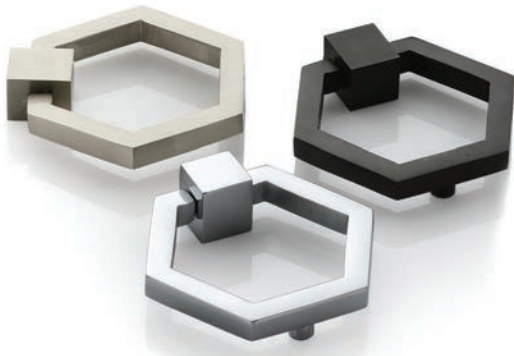
Item	Length	CTC	Projection	Price
MT2768-089	4 1/16"	3 1/2"	1 5/16"	\$24.60



Item	Size	Price
MT6311-050	2 x 2"	\$29.00



Item	Dia.	Price
MT6321-050	2"	\$26.10
MT6321-063	2 1/2"	\$43.80



Item	Size	Price
MT6334-051	2 3/8"	\$36.20



Item	Size	Price
MT6347-051	2 3/8"	\$56.90
Backplate size (edge to edge): 2 3/4"		





Item	Length	Base	Width	Projection	Price
MT0365-000	3 1/2"	7/8"	3/8"	1 1/4"	\$27.20

Item	Length	Base	Width	Projection	Price
MT4463-000	3 9/16"	1"	7/16"	1 3/8"	\$39.80



Item	Length	CTC	Width	Projection	Price
MT4458-102	5 1/4"	4"	7/16"	1 3/16"	\$36.20
MT4458-152	7 1/4"	6"	7/16"	1 3/16"	\$46.60
MT4458-203	9 1/4"	8"	7/16"	1 3/16"	\$56.90
MT4458-254	11 1/4"	10"	1/2"	1 3/16"	\$69.90



Item	Length	CTC	Width	Projection	Price
MT4461-102	5"	4"	7/16"	1 3/16"	\$36.20
MT4461-152	7"	6"	7/16"	1 3/16"	\$46.60
MT4461-203	9"	8"	7/16"	1 3/16"	\$56.90
MT4461-254	11"	10"	1/2"	1 3/16"	\$69.90

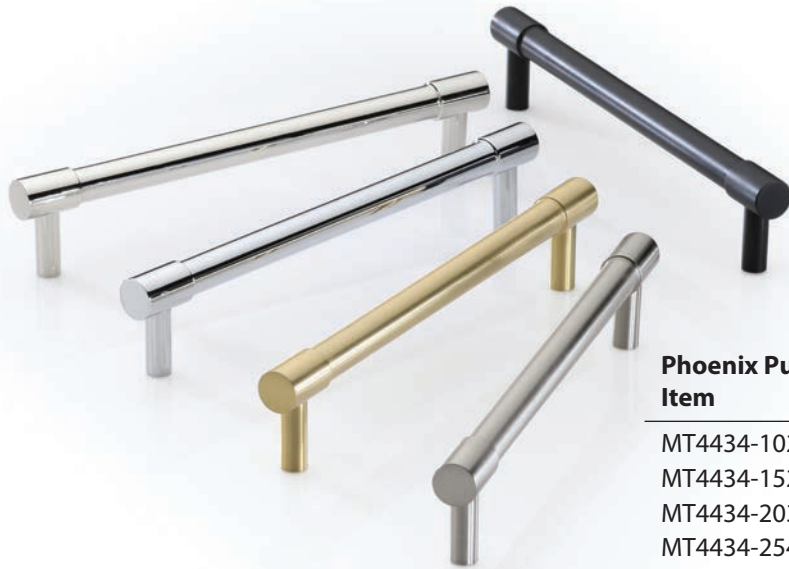


Item	Length	CTC	Width	Projection	Price
MT4422-102	5 1/4"	4"	1/2"	1 5/16"	\$33.60
MT4422-152	7 1/4"	6"	1/2"	1 5/16"	\$42.80
MT4422-203	9 1/4"	8"	1/2"	1 5/16"	\$51.70
MT4422-254	11 1/4"	10"	1/2"	1 5/16"	\$60.80



Item	Length	CTC	Width	Projection	Price
MT4410-102	5 1/4"	4"	7/16"	1 3/16"	\$27.80
MT4410-152	7 1/4"	6"	7/16"	1 3/16"	\$35.20
MT4410-203	9 1/4"	8"	7/16"	1 3/16"	\$42.00
MT4410-254	11 1/4"	10"	7/16"	1 3/16"	\$47.60

Item	Length	CTC	Width	Projection	Price
MT4446-102	5 1/2"	4"	7/16"	1 3/16"	\$33.40
MT4446-152	7 1/2"	6"	7/16"	1 3/16"	\$40.80
MT4446-203	9 1/2"	8"	7/16"	1 3/16"	\$48.90
MT4446-254	11 1/2"	10"	7/16"	1 3/16"	\$55.30



**Phoenix Pull**

Item	Length	CTC	Width	Projection	Price
MT4434-102	4 3/4"	4"	7/16"	1 1/4"	\$28.40
MT4434-152	6 3/4"	6"	7/16"	1 1/4"	\$36.20
MT4434-203	8 3/4"	8"	7/16"	1 1/4"	\$44.00
MT4434-254	10 3/4"	10"	7/16"	1 1/4"	\$51.70

Item	Length	CTC	Thickness	Projection	Price
MT0361-102	6 1/2"	4"	1/2"	1 1/4"	\$23.70
MT0361-152	8 1/2"	6"	1/2"	1 1/4"	\$31.70
MT0361-203	10 1/2"	8"	1/2"	1 1/4"	\$37.60



**Linear Pull**

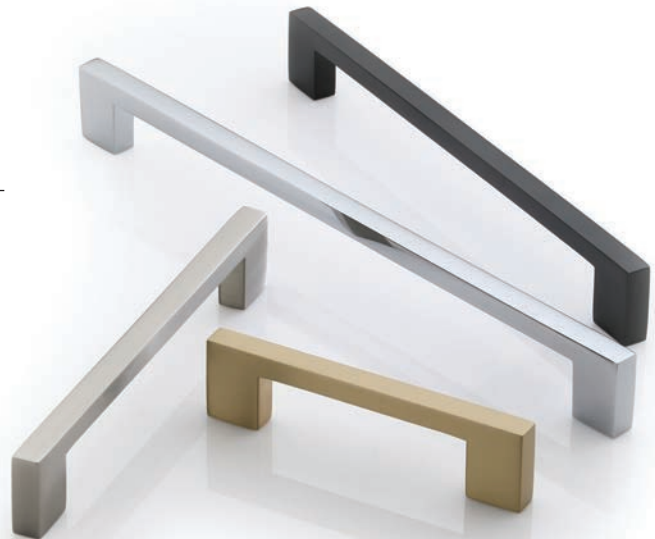
Item	Length	CTC	Width	Projection	Price
MT3681-096	5 3/16"	3 3/4"	5/16"	1 3/16"	\$26.70
MT3681-152	7 3/8"	6"	5/16"	1 3/16"	\$32.80
MT3681-203	9 3/8"	8"	5/16"	1 3/16"	\$35.40
MT3681-254	11 3/8"	10"	5/16"	1 3/16"	\$41.30



**Urban Pull**

Item	Length	CTC	Width	Projection	Price
MT0337-096	4 1/2"	3 3/4"	3/8"	1 1/8"	\$27.40
MT0337-152	6 3/4"	6"	3/8"	1 1/8"	\$31.80
MT0337-203	8 3/4"	8"	3/8"	1 1/8"	\$36.50
MT0337-252	10 3/4"	10"	3/8"	1 1/8"	\$42.30
MT0337-320	13 3/8"	12 5/8"	3/8"	1 1/8"	\$55.30
MT0337-480	19 5/8"	18 7/8"	3/8"	1 1/8"	\$88.00

MT0337-480 has three legs with 9 7/16" CTC between legs



**Adria Pull**

Item	Length	CTC	Dia.	Projection	Price
MT3960-102	4 5/8"	4"	9/16"	1 7/16"	\$32.40
MT3960-152	6 5/8"	6"	5/8"	1 9/16"	\$46.60
MT3960-203	8 3/4"	8"	3/4"	1 5/8"	\$62.00
MT3960-254	10 3/4"	10"	3/4"	1 5/8"	\$77.60





**Bauhaus Pull**

Item	Length	CTC	Width	Projection	Price
MT0312-101	4 5/8"	4"	5/8"	1 5/8"	\$27.80
MT0312-152	6 5/8"	6"	5/8"	1 5/8"	\$37.90
MT0312-203	8 5/8"	8"	5/8"	1 5/8"	\$47.90
MT0312-254	10 5/8"	10"	5/8"	1 5/8"	\$55.30
MT0312-320	13 1/4"	12 5/8"	5/8"	1 5/8"	\$70.10

**Apollo Pull**

Item	Length	CTC	Width	Projection	Price
MT0345-096	4 1/2"	3 3/4"	3/8"	1 3/8"	\$28.60
MT0345-152	6 3/4"	6"	3/8"	1 3/8"	\$36.10
MT0345-203	8 3/4"	8"	3/8"	1 3/8"	\$43.20
MT0345-254	10 3/4"	10"	3/8"	1 3/8"	\$51.70



**Wide Urban Pull**

Item	Length	CTC	Width	Projection	Price
MT4520-102	4 3/8"	4"	3/4"	1 1/8"	\$26.30
MT4520-152	6 1/4"	6"	3/4"	1 1/8"	\$32.90
MT4520-203	8 1/4"	8"	3/4"	1 1/8"	\$40.20



**Oval Pull**

Item	Length	CTC	Width	Projection	Price
MT7854-096	5 7/8"	3 3/4"	3/8"	1 1/8"	\$19.70
MT7854-152	7 7/8"	6"	3/8"	1 1/8"	\$23.70
MT7854-203	9 7/8"	8"	3/8"	1 1/8"	\$30.00

**Wire Pull**

Item	Length	CTC	Thickness	Projection	Price
MT2155-089	3 3/4"	3 1/2"	5/16"	1 1/4"	\$11.00
MT2155-152	6 1/4"	6"	5/16"	1 1/4"	\$15.60



**Sash Pull**

Item	Length	CTC	Thickness	Projection	Price
MT1090-086	4 1/8"	3 3/8"	3/8"	1 1/8"	\$12.20
MT1090-132	6 1/8"	5 3/16"	3/8"	1 3/8"	\$16.90



Item	Length	CTC	Width	Projection	Price
MT4670-102	6 1/2"	4"	7/16"	1 1/4"	\$24.60
MT4670-152	8 1/2"	6"	7/16"	1 1/4"	\$29.50
MT4670-203	10 1/2"	8"	7/16"	1 1/4"	\$36.50
MT4670-254	12 1/2"	10"	7/16"	1 1/4"	\$48.40



**Angular Pull**

Item	Length	CTC	Width	Projection	Price
MT3465-102	4 3/8"	4"	7/16"	1 1/4"	\$28.40
MT3465-152	6 3/8"	6"	7/16"	1 1/4"	\$36.20
MT3465-203	8 3/8"	8"	7/16"	1 1/4"	\$44.00
MT3465-254	10 3/8"	10"	1/2"	1 1/4"	\$51.70



**Traditional Pull**

Item	Length	CTC	Thickness	Projection	Price
MT0376-096	5"	3 3/4"	3/8"	1 1/4"	\$27.20
MT0376-152	7 1/8"	6"	3/8"	1 1/4"	\$31.60
MT0376-203	9 1/8"	8"	1/2"	1 1/4"	\$36.20
MT0376-254	11 1/8"	10"	1/2"	1 1/4"	\$48.20



**Rhode Pull**

Item	Length	CTC	Thickness	Projection	Price
MT4370-096	4 ¾"	3 ¾"	1"	1 ½"	\$42.80
MT4370-152	7"	6"	1"	1 ½"	\$52.20
MT4370-203	9"	8"	1"	1 ½"	\$61.50
MT4370-254	11"	10"	1"	1 ½"	\$77.70

**Hudson Pull**

Item	Length	CTC	Width	Projection	Price
MT4384-102	4 ¾"	4"	1 ½"	1 ¼"	\$32.40
MT4384-152	6 ¾"	6"	1 ¾"	1 ¼"	\$40.20
MT4384-203	8 ¾"	8"	1 ¾"	1 ¼"	\$47.90



**Hex Profile Pull**

Item	Length	CTC	Width	Projection	Price
MT4473-102	4 ⅞"	4"	½"	1 ⅝"	\$36.20
MT4473-152	6 ⅞"	6"	½"	1 ⅝"	\$47.90
MT4473-203	8 ⅞"	8"	½"	1 ⅝"	\$59.50
MT4473-254	10 ⅞"	10"	½"	1 ⅝"	\$71.20





Deco Pull Item	Length	CTC	Width	Projection	Price
MT0334-096	4 1/2"	3 3/4"	1"	1 3/8"	\$32.40
MT0334-152	6 5/8"	6"	1"	1 3/8"	\$40.20
MT0334-203	8 5/8"	8"	1"	1 3/8"	\$47.90
MT0334-254	10 5/8"	10"	1"	1 3/8"	\$56.90



Durham Pull Item	Length	CTC	Thickness	Projection	Price
MT7210-076	3 7/8"	3"	5/8"	1 1/4"	\$17.90
MT7210-152	6 7/8"	6"	3/4"	1 3/8"	\$27.20
MT7210-203	9"	8"	3/4"	1 3/8"	\$33.00



Bridge Pull Item	Length	CTC	Width	Projection	Price
MT1800-089	3 7/8"	3 1/2"	1/2"	1 1/4"	\$19.70
MT1800-152	6 3/8"	6"	1/2"	1 1/4"	\$27.20
MT1800-203	8 1/4"	8"	1/2"	1 1/4"	\$32.90

**Anvil Cabinet Pull**

Item	Length	CTC	Width	Projection	Price
MT2232-096	4 3/8"	3 3/4"	1"	1 3/8"	\$32.40
MT2232-152	6 5/8"	6"	1"	1 3/8"	\$38.90
MT2232-203	8 5/8"	8"	1"	1 3/8"	\$45.40



## APPLIANCE PULLS



**V1450 Apollo Appliance Pull**

Length	CTC	Handle	Projection	Thru Bolt	Surface Mount <sup>1</sup>	Back to Back Pair <sup>2</sup>
12 1/4"	11"	1 x 1/2"	2 1/4"	V1450-12-TB \$233	V1450-12-SM \$273	V1450-12-BTB \$506
18 1/4"	17"	1 x 1/2"	2 1/4"	V1450-18-TB \$308	V1450-18-SM \$348	V1450-18-BTB \$656

(1) Suitable only for solid wood doors with minimum thickness of 1 1/4"

(2) Maximum door thickness for Back-to-Back fixing: 3"



### V1390 Urban Appliance Pull

Length	CTC	Handle	Projection	Thru Bolt		Surface Mount <sup>1</sup>	Back to Back Pair <sup>2</sup>
12"	11"	1 x ¾"	2 ⅛"	V1390-12-TB	\$233	V1390-12-SM \$273	V1390-12-BTB \$506
18"	17"	1 x ¾"	2 ⅛"	V1390-18-TB	\$308	V1390-18-SM \$348	V1390-18-BTB \$656



### V1376 Traditional Appliance Pull

Back to back and surface mount fixing not available

Length	CTC	Dia.	Projection	Thru Bolt	
13"	11"	1"	2 ½"	V1376-12-TB	\$233
19"	17"	1"	2 ½"	V1376-18-TB	\$308

(1) Suitable only for solid wood doors with minimum thickness of 1 ¼"

(2) Maximum door thickness for Back-to-Back fixing: 3"



**V1334 Deco Appliance Pull**

Length	CTC	Width	Projection	Thru Bolt		Surface Mount <sup>1</sup>	Back to Back Pair <sup>2</sup>
12"	11"	1 ¼"	2"	V1334-12-TB	\$233	V1334-12-SM \$273	V1334-12-BTB \$506
18"	17"	1 ¼"	2"	V1334-18-TB	\$308	V1334-18-SM \$348	V1334-18-BTB \$656



**V1232 Anvil Appliance Pull**

Length	CTC	Width	Projection	Thru Bolt		Surface Mount <sup>1</sup>	Back to Back Pair <sup>2</sup>
12 7/8"	12"	1"	1 7/8"	V1232-12-TB	\$233	V1232-12-SM \$273	V1232-12-BTB \$506
18 7/8"	18"	1"	1 7/8"	V1232-18-TB	\$308	V1232-18-SM \$348	V1232-18-BTB \$656

(1) Suitable only for solid wood doors with minimum thickness of 1 ¼"

(2) Maximum door thickness for Back-to-Back fixing: 3"





**V1312 Bauhaus Appliance Pull**

Length	CTC	Dia.	Projection	Thru Bolt	Surface Mount <sup>1</sup>	Back to Back Pair <sup>2</sup>
13"	12"	1"	2 3/8"	V1312-12-TB \$233	V1312-12-SM \$273	V1312-12-BTB \$506
19"	18"	1"	2 3/8"	V1312-18-TB \$308	V1312-18-SM \$348	V1312-18-BTB \$656



**V1315 Bauhaus Knurled Appliance Pull**

Length	CTC	Dia.	Projection	Thru Bolt	Surface Mount <sup>1</sup>	Back to Back Pair <sup>2</sup>
13"	12"	1"	2 3/8"	V1315-12-TB \$326	V1315-12-SM \$366	V1315-12-BTB \$692

Only available in 12" CTC.

(1) Suitable only for solid wood doors with minimum thickness of 1 1/4"

(2) Maximum door thickness for Back-to-Back fixing: 3"



**V1361 Bar Appliance Pull**

Length	CTC	Dia.	Projection	Thru Bolt	Surface Mount <sup>1</sup>	Back to Back Pair <sup>2</sup>
12"	8"	1"	2 3/8"	V1361-12-TB \$233	V1361-12-SM \$273	V1361-12-BTB \$506
18"	14"	1"	2 3/8"	V1361-18-TB \$308	V1361-18-SM \$348	V1361-18-BTB \$656



**V1365 Bar Knurled Appliance Pull**

Length	CTC	Dia.	Projection	Thru Bolt	Surface Mount <sup>1</sup>	Back to Back Pair <sup>2</sup>
12"	8"	1"	2 3/8"	V1365-12-TB \$300	V1365-12-SM \$340	V1365-12-BTB \$640
18"	14"	1"	2 3/8"	V1365-18-TB \$389	V1365-18-SM \$429	V1365-18-BTB \$818

(1) Suitable only for solid wood doors with minimum thickness of 1 1/4"

(2) Maximum door thickness for Back-to-Back fixing: 3"



**V1210 Durham Appliance Pull**

Length	CTC	Width	Projection	Thru Bolt	Surface Mount <sup>1</sup>	Back to Back Pair <sup>2</sup>
13 5/8"	12"	7/8"	1 3/4"	V1210-12-TB \$233	V1210-12-SM \$273	V1210-12-BTB \$506
19 5/8"	18"	7/8"	1 3/4"	V1210-18-TB \$308	V1210-18-SM \$348	V1210-18-BTB \$656



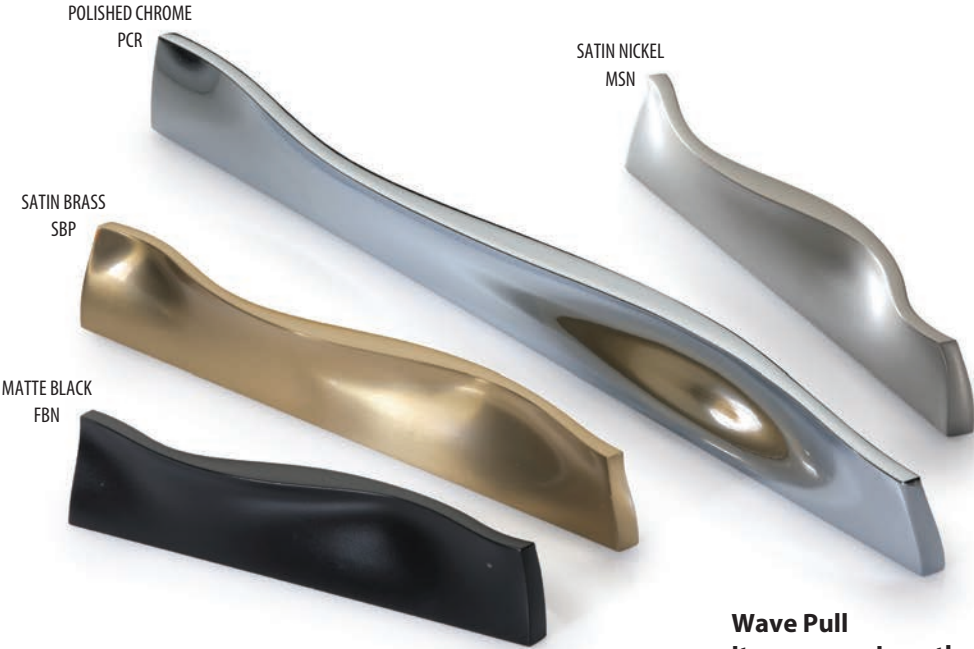
**V1473 Hex Profile Appliance Pull**

Length	CTC	Width	Projection	Thru Bolt	Surface Mount <sup>1</sup>	Back to Back Pair <sup>2</sup>
12 7/8"	12"	3/4"	2 1/4"	V1473-12-TB \$272	V1473-12-SM \$312	V1473-12-BTB \$584
18 7/8"	18"	3/4"	2 1/4"	V1473-18-TB \$349	V1473-18-SM \$389	V1473-18-BTB \$738

(1) Suitable only for solid wood doors with minimum thickness of 1 1/4"

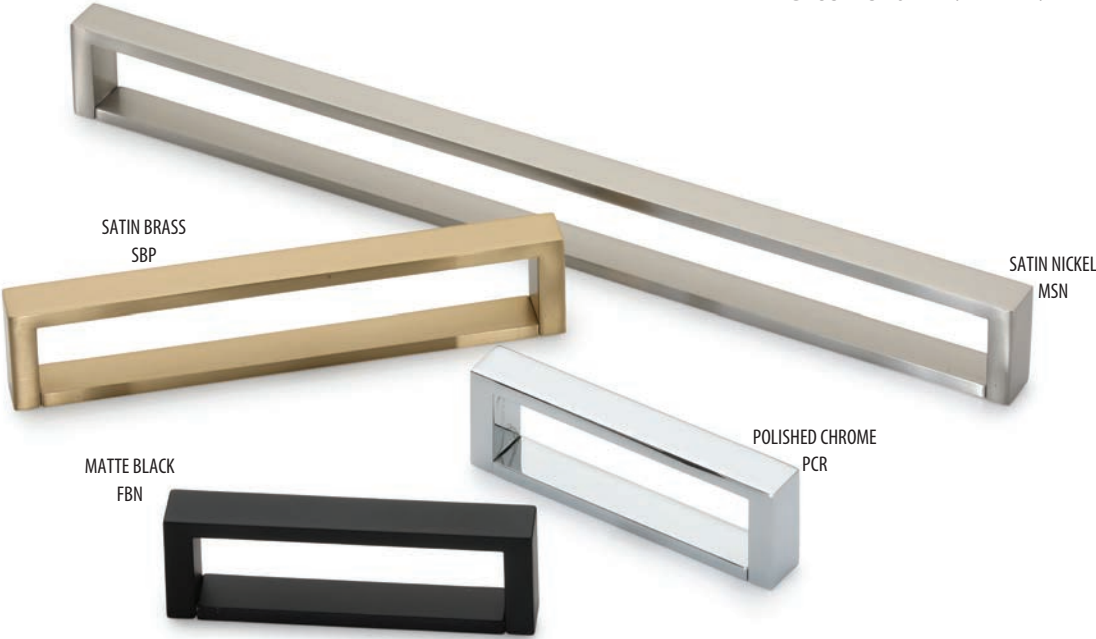
(2) Maximum door thickness for Back-to-Back fixing: 3"

# URBAN



**Wave Pull**

Item	Length	CTC	Base	Projection	Price
MC2852-096	5 3/8"	3 3/4"	5/16"	1 1/8"	\$26.10
MC2852-160	7 7/8"	6 5/16"	5/16"	1 1/8"	\$36.00
MC2852-320	14 1/8"	12 5/8"	5/16"	1 1/8"	\$71.70

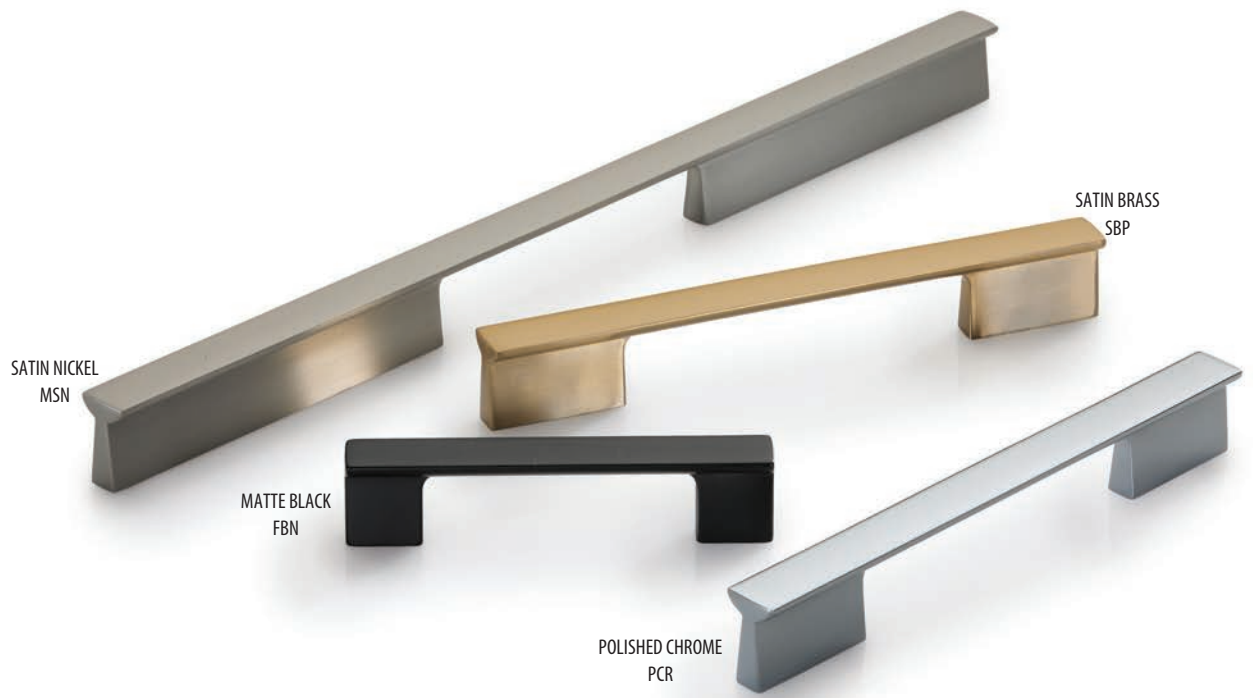


**Box Pull**

Item	Length	CTC	Width	Projection	B	Price
MC2780-096	4 1/8"	3 3/4"	5/8"	1 1/4"	7/8"	\$26.10
MC2780-160	6 5/8"	6 5/16"	5/8"	1 1/4"	7/8"	\$36.00
MC2780-320	12 7/8"	12 5/8"	5/8"	1 1/4"	7/8"	\$64.00

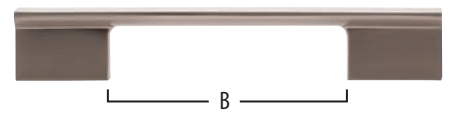






**Bridge Pull**

Item	Length	CTC	Width	Projection	B	Price
MC2866-096	4 3/8"	3 3/4"	5/8"	1"	2 3/4"	\$20.90
MC2866-160	7 1/8"	6 5/16"	5/8"	1"	4"	\$29.00
MC2866-320	13 3/8"	12 5/8"	5/8"	1"	4"	\$67.30

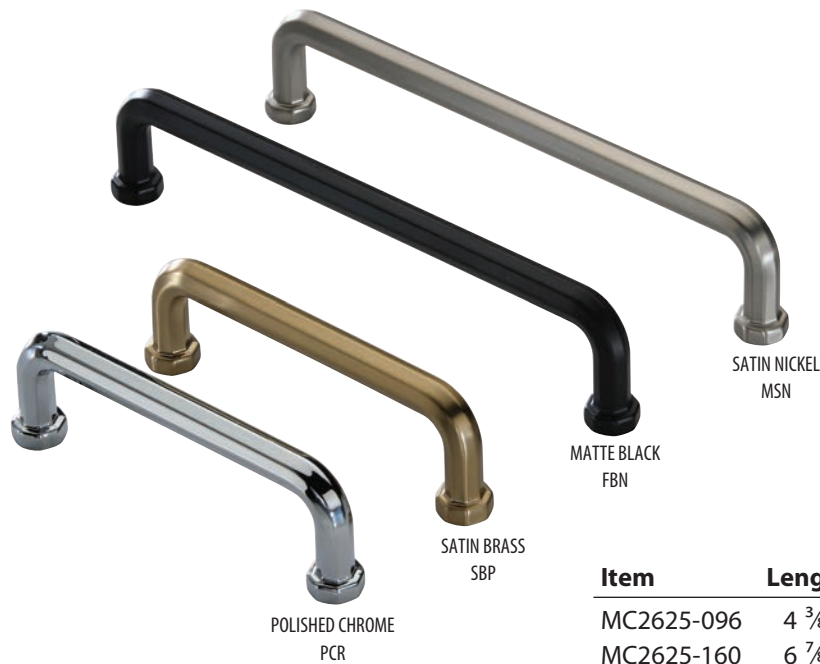


**Leaf Pull**

Item	Length	CTC	Width	Projection	Price
MC2796-032	1 3/4"	1 1/4"	5/8"	1 1/8"	\$17.50
MC2796-096	4 3/8"	3 3/4"	7/8"	1 1/8"	\$30.40
MC2796-160	6 7/8"	6 5/16"	7/8"	1 1/8"	\$44.70
MC2796-320	13 1/8"	12 5/8"	7/8"	1 1/8"	\$83.30



Item	Length	CTC	Width	Projection	Price
MC2617-128	5 3/4"	5 1/16"	5/8"	1 3/8"	\$16.50
MC2617-160	6 7/8"	6 5/16"	5/8"	1 3/8"	\$19.80
MC2617-256	10 3/4"	10 1/16"	5/8"	1 3/8"	\$36.30



Item	Length	CTC	Width	Projection	Price
MC2625-096	4 3/8"	3 3/4"	1/2"	1 1/4"	\$12.10
MC2625-160	6 7/8"	6 5/16"	1/2"	1 1/4"	\$17.60



Item	Length	CTC	Width	Projection	Price
MC2619-160	6 3/4"	6 5/16"	1/2"	1 3/8"	\$17.60







Item	Length	CTC	Price
MC2807-096	4 5/8"	3 3/4"	\$23.30
MC2807-160*	7 1/8"	6 5/16"	\$32.10
MC2807-320	13 3/8"	12 5/8"	\$53.80

Width: 7/8", Projection: 1 5/8" (all sizes)  
 \* Medium (160mm) size not available in Pol Chrome.  
 This design not offered in Satin Brass



Item	Length	CTC	Width	Projection	Price
MC2643-096*	4 3/8"	3 3/4"	1"	1 1/8"	\$17.60
MC2643-160*	6 7/8"	6 5/16"	1"	1 3/8"	\$28.50
MC2643-320	13 3/8"	12 5/8"	1"	1 3/8"	\$47.60

\* Matte Black not available in smallest (96mm) size. Satin Nickel not available in medium (160mm) size.

This design not offered in Satin Brass.





Item	Length	CTC	Width	Projection	Price
MC2796-032	1 3/4"	1 1/4"	5/8"	1 1/8"	\$17.50

Available in all four finishes

Item	Length	CTC	Projection	Thickness	Price
MC1265-032	2"	1 1/4"	1 1/4"	3/8"	\$17.50

Available in all four finishes



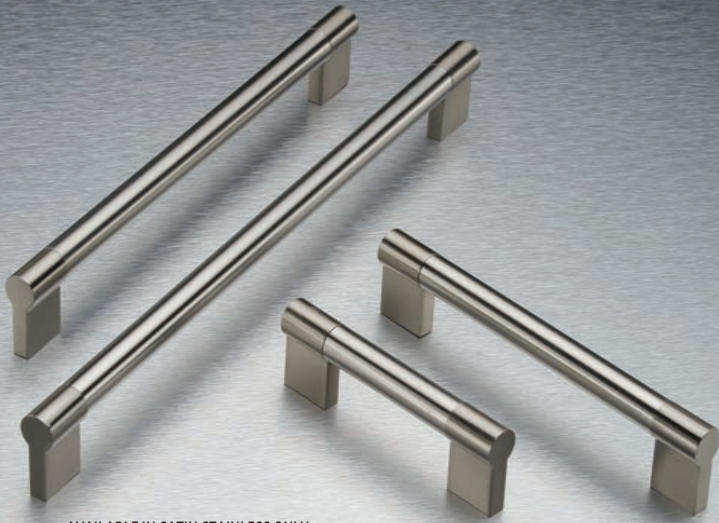
Item	Length	Projection	Price
MC1254-033	1 1/4"	1 1/8"	\$17.60
MC1254-040	1 5/8"	1 1/8"	\$20.00

Available in all four finishes



Item	Length	CTC	Price
MC7108-096-SST	4 1/8"	3 3/4"	\$21.80
MC7108-152-SST	6 3/8"	6"	\$27.30
MC7108-254-SST	10 3/8"	10"	\$35.50
MC7108-356-SST	14 3/8"	14"	\$42.20
MC7108-457-SST	18 3/8"	18"	\$49.10

Item	Length	CTC	Price
MC7114-096-SST	4 3/8"	3 3/4"	\$26.20
MC7114-152-SST	6 5/8"	6"	\$28.60
MC7114-254-SST	10 5/8"	10"	\$39.00
MC7114-356-SST	14 5/8"	14"	\$46.60
MC7114-457-SST	18 5/8"	18"	\$54.90



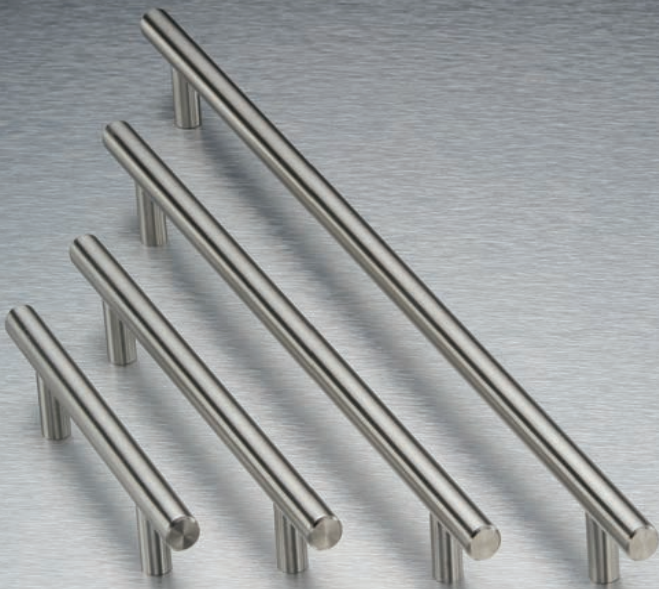
AVAILABLE IN SATIN STAINLESS ONLY  
 Projection: 1 1/2"  
 Dia: 5/8"

Item	Length	CTC	Price
MC2090-096-SST	4 3/4"	3 3/4"	\$25.40
MC2090-160-SST	7 5/16"	6 5/16"	\$31.50
MC2090-240-SST	10 5/16"	9 7/16"	\$36.10
MC2090-320-SST	13 5/8"	12 5/8"	\$40.50
MC2090-480-SST	19 7/8"	18 7/8"	\$49.40



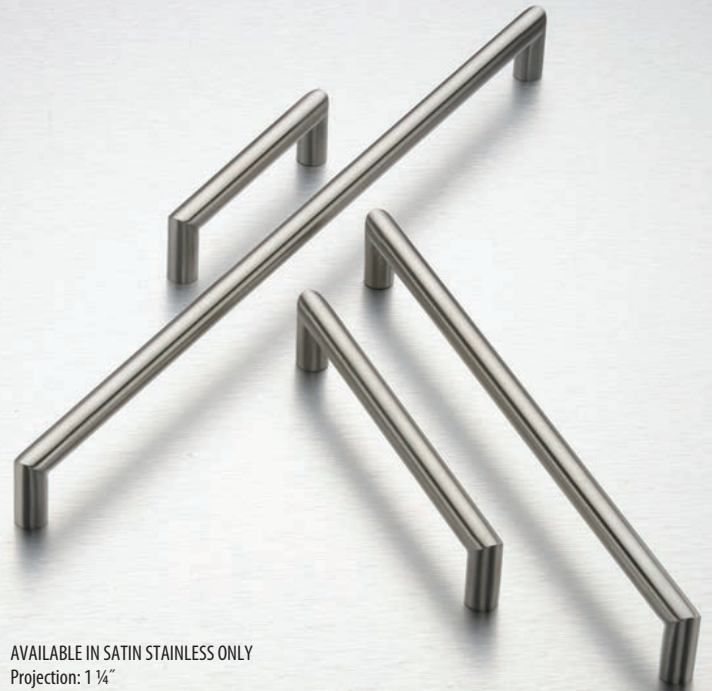
AVAILABLE IN SATIN STAINLESS ONLY  
 Projection: 1 3/8"  
 Width: 5/8"

Item	Length	CTC	Price
MC7109-096-SST	4 3/8"	3 3/4"	\$23.70
MC7109-152-SST	6 5/8"	6"	\$25.90
MC7109-254-SST	10 5/8"	10"	\$36.10
MC7109-356-SST	14 5/8"	14"	\$43.60
MC7109-457-SST	18 5/8"	18"	\$51.70



AVAILABLE IN SATIN STAINLESS ONLY  
 Projection: 1 1/4"  
 Dia: 1/2"

Item	Length	CTC	Price
MC7102-096-SST	6 1/8"	3 3/4"	\$12.30
MC7102-152-SST	8 3/8"	6"	\$15.00
MC7102-254-SST	12 3/8"	10"	\$19.80
MC7102-356-SST	16 3/8"	14"	\$22.50
MC7102-457-SST	20 3/8"	18"	\$26.50



AVAILABLE IN SATIN STAINLESS ONLY  
 Projection: 1 1/4"  
 Dia: 1/2"

Item	Length	CTC	Price
MC7103-096-SST	4 1/4"	3 3/4"	\$15.70
MC7103-152-SST	6 1/2"	6"	\$20.80
MC7103-254-SST	10 1/2"	10"	\$25.90
MC7103-356-SST	14 1/2"	14"	\$34.70
MC7103-457-SST	18 1/2"	18"	\$40.90



# FINE ENGLISH PEWTER

---

Our Pewter range includes a collection of unique designs produced in England from an alloy called Fine English Pewter. This alloy is of historical origin, and once molten, is handcrafted by expert artisans to create products with a unique and authentic appearance.

Subtle differences in each piece are the result of a manufacturing process being performed predominantly by hand, using centuries old techniques combined with modern machining technology.

Fine English Pewter is a living finish, and will oxidize gracefully with its environment. While many owners are happy to leave their knobs in the oxidized state, others prefer to restore to original luster by cleaning with a soft damp cloth, lightly dabbed with metal polish suitable for silverware.

The manufacturing process used to produce the knobs results in a relatively consistent finish. However, there may be small differences in distressing and detailing from one piece to another.





**MF5035-030-FEP**

Dia: 1 1/8"  
Projection: 1 1/8"  
Price: \$18.00



**MF5035-037-FEP**

Dia: 1 1/2"  
Projection: 1 1/8"  
Price: \$22.00



**MF5668-040-FEP**

Dia: 1 9/16"  
Projection: 1 5/16"  
Price: \$25.00



**MF5009-044-FEP**

Dia: 1 3/4"  
Projection: 1 1/8"  
Price: \$18.00



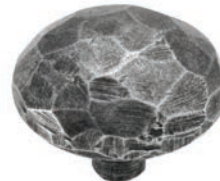
**MF5006-030-FEP**

Dia: 1 1/8"  
Projection: 1"  
Price: \$18.00



**MF5006-036-FEP**

Dia: 1 3/8"  
Projection: 1"  
Price: \$20.00



**MF5006-040-FEP**

Dia: 1 1/2"  
Projection: 1 1/4"  
Price: \$22.00



**MF5008-044-FEP**

Dia: 1 3/4"  
Projection: 1 1/8"  
Price: \$18.00



**MF5012-025-FEP**

Dia: 1"  
Projection: 1 1/4"  
Price: \$26.00



**MF5290-020-FEP**

Dia: 3/4"  
Projection: 1 3/8"  
Price: \$29.60



**MF5038-037-FEP**

Dia: 1 1/2"  
Projection: 1 5/8"  
Price: \$24.30



**MF5011-040-FEP**

Dia: 1 5/8"  
Projection: 1 5/8"  
Price: \$22.00



**MF5004-047-FEP**

Dia: 1 3/4"  
Projection: 1 5/8"  
Price: \$20.00



**MF5289-057-FEP**

Dia: 2 1/4"  
Projection: 1 5/8"  
Oval knob  
Price: \$20.00



**MF5223-044-FEP**

Dia: 1 3/4"  
Projection: 1 1/2"  
Backplate included  
Price: \$50.30



**MF5255-032-FEP**

1 1/4" x 1 1/4"  
Projection: 1 3/8"  
Backplate included  
Price: \$24.00





**MF5292-030-FEP**

Dia: 1 1/8"  
 Projection: 1"  
 Price: \$18.00



**MF5295-035-FEP**

Dia: 1 3/8"  
 Projection: 1 1/4"  
 Price: \$26.00



**MF5032-032-FEP**

Knob size: 1 7/8" x 1 1/8"  
 Backplate size: 3 3/4" x 1 3/8"  
 Price: \$30.00



Item	Size	Projection	Price
MF5572-030-FEP	1 3/16"	1 5/16"	\$20.00
MF5572-040-FEP	1 9/16"	1 5/16"	\$30.00



Item	Dia.	Projection	Price
MF5669-040-FEP	1 9/16"	1 3/16"	\$28.00



Item	Dia.	Projection	Price
MF5574-036-FEP	1 7/16"	1 3/8"	\$29.60
MF5574-040-FEP	1 9/16"	1 3/8"	\$34.00



**MF9008-038-FEP**

Dia: 1 1/2"  
 Projection: 1/8"  
 Price: \$12.10



Item	Length	CTC	Projection	Price
MF5662-160-FEP	7 1/16"	6 5/16"	1 3/8"	\$50.00
MF5662-224-FEP	9 5/8"	8 13/16"	1 3/8"	\$56.00



Item	Length	CTC	Projection	Price
MF6598-128-FEP	5 1/2"	5 1/16"	1 1/2"	\$41.00
MF6598-192-FEP	8 1/16"	7 9/16"	1 1/2"	\$46.00



Item	Length	CTC	Projection	Price
MF6537-096-FEP	7"	3 3/4"	1 1/2"	\$40.00
MF6537-128-FEP	8 1/4"	5 1/16"	1 5/8"	\$46.00



Item	Length	CTC	Projection	Price
MF5650-160-FEP	7 1/4"	6 5/16"	1 1/2"	\$50.00
MF5650-288-FEP	12 5/16"	11 5/16"	1 1/2"	\$56.00



Item	Length	CTC	Projection	Price
MF5520-096-FEP	5 3/8"	3 3/4"	1"	\$30.00
MF5520-128-FEP	6 5/8"	5 1/16"	1"	\$36.00



Item	Length	CTC	Projection	Price
MF6256-128-FEP	6 1/8"	5 1/16"	1 1/4"	\$45.00
MF6256-192-FEP	8 5/8"	7 9/16"	1 1/4"	\$51.00



Item	Length	CTC	Projection	Price
MF6001-096-FEP	6 1/8"	3 3/4"	1 5/8"	\$32.00



Item	Length	CTC	Projection	Price
MF6032-096-FEP	5 3/4"	3 3/4"	1"	\$30.00
MF6032-128-FEP	7"	5 1/16"	1"	\$36.00



Item	Length	CTC	Projection	Price
MF6528-128-FEP	6 1/2"	5 1/16"	1 3/8"	\$30.00
MF6528-160-FEP	7 7/8"	6 5/16"	1 3/8"	\$36.00



Item	Length	CTC	Projection	Price
MF6535-128-FEP	6 3/4"	5 1/16"	1 1/4"	\$40.00
MF6535-160-FEP	8 1/8"	6 5/16"	1 1/8"	\$48.00



Item	Length	CTC	Projection	Price
MF6525-096-FEP	6 1/8"	3 3/4"	1 1/4"	\$40.00
MF6525-128-FEP	7 1/2"	5 1/16"	1 1/4"	\$46.00



Item	Length	CTC	Projection	Price
MF5526-096-FEP	6 1/4"	3 3/4"	1 5/8"	\$48.00
MF5526-128-FEP	7 1/2"	5 1/16"	1 5/8"	\$54.00



Item	Length	CTC	Projection	Price
MF6261-128-FEP	7 1/2"	5 1/16"	1 1/8"	\$36.00



Item	Length	CTC	Projection	Price
MF6035-128-FEP	6"	5 1/16"	1 5/8"	\$30.00
MF6035-160-FEP	7 1/4"	6 5/16"	1 5/8"	\$36.00



Item	Length	CTC	Projection	Price
MF6012-096-FEP	4 3/4"	3 3/4"	1 1/8"	\$35.40
MF6012-128-FEP	6 1/4"	5 1/16"	1 1/8"	\$42.50



Item	Length	CTC	Projection	Price
MF6005-096-FEP	5 1/8"	3 3/4"	1 5/8"	\$36.00
MF6005-160-FEP	7 5/8"	6 5/16"	1 5/8"	\$46.00



Item	Length	CTC	Projection	Price
MF5284-128-FEP	7 7/8"	5 1/16"	1 3/4"	\$58.00



Item	Length	CTC	Projection	Price
MF6276-128-FEP	7"	5 1/16"	1 1/2"	\$46.00





Item	Length	CTC	Projection	Price
MF6534-128-FEP	5 5/8"	5 1/16"	1 1/4"	\$40.00



Item	Length	CTC	Projection	Price
MF6514-096-FEP	5 1/2"	3 3/4"	1 1/8"	\$36.00



Item	Length	CTC	Projection	Price
MF6237-128-FEP	6 7/8"	5 1/16"	1 1/2"	\$45.00

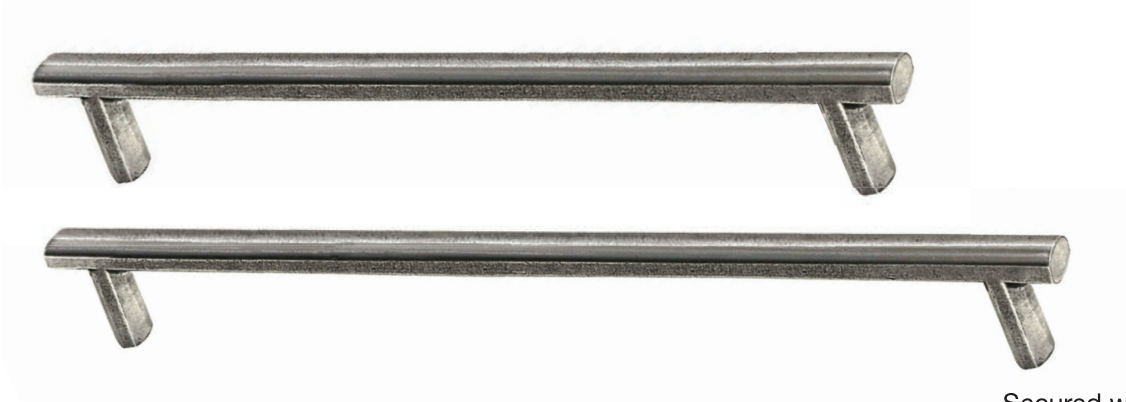


Item	Length	CTC	Projection	Price
MF6232-128-FEP	7"	5 1/16"	1 1/2"	\$58.00
MF6232-160-FEP	8 1/4"	6 5/16"	1 1/2"	\$62.00



Item	Length	CTC	Projection	Price
MF6030-128-FEP	6"	5 1/16"	1 5/8"	\$40.00
MF6030-160-FEP	7 1/8"	6 5/16"	1 5/8"	\$46.00





Item	CTC	Length	Width	Projection	Price
MF6218-160-FEP	6 <sup>5</sup> / <sub>16</sub> "	7 <sup>7</sup> / <sub>8</sub> "	<sup>1</sup> / <sub>16</sub> "	1 <sup>5</sup> / <sub>8</sub> "	\$56.00
MF6218-224-FEP	8 <sup>13</sup> / <sub>16</sub> "	10 <sup>3</sup> / <sub>8</sub> "	<sup>1</sup> / <sub>16</sub> "	1 <sup>5</sup> / <sub>8</sub> "	\$61.00
MF6218-288-FEP	11 <sup>5</sup> / <sub>16</sub> "	12 <sup>7</sup> / <sub>8</sub> "	<sup>1</sup> / <sub>16</sub> "	1 <sup>5</sup> / <sub>8</sub> "	\$91.00
MF6218-352-FEP	13 <sup>7</sup> / <sub>8</sub> "	15 <sup>3</sup> / <sub>8</sub> "	<sup>1</sup> / <sub>16</sub> "	1 <sup>5</sup> / <sub>8</sub> "	\$121.00

Secured with 2x M4 screws  
Not suitable for use on appliances

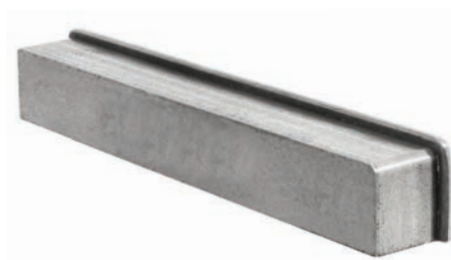


Item	CTC	Length	Width	Projection	Price
MF6597-160-FEP	6 <sup>5</sup> / <sub>16</sub> "	8 <sup>1</sup> / <sub>4</sub> "	<sup>1</sup> / <sub>2</sub> "	1 <sup>1</sup> / <sub>2</sub> "	\$50.00
MF6597-224-FEP	8 <sup>13</sup> / <sub>16</sub> "	10 <sup>13</sup> / <sub>16</sub> "	<sup>1</sup> / <sub>2</sub> "	1 <sup>1</sup> / <sub>2</sub> "	\$70.00

Secured with 2x M4 screws  
Not suitable for use on appliances



Item	Length	CTC	Projection	Price
MF8503-064-FEP	4 3/4"	2 1/2"	7/8"	\$40.00



Item	Length	CTC	Projection	Price
MF8244-128-FEP	6 7/8"	5 1/16"	1"	\$38.00



Item	Length	CTC	Projection	Price
MF8204-064-FEP	3 7/8"	2 1/2"	1 5/8"	\$30.00
MF8204-096-FEP	6 1/2"	3 3/4"	1 5/8"	\$40.00



Item	Length	CTC	Projection	Price
MF8252-096-FEP	5 1/8"	3 3/4"	1 5/8"	\$40.00



Item	Length	CTC	Projection	Price
MF8002-064-FEP	3 3/4"	2 1/2"	1 5/8"	\$20.00



Item	Length	CTC	Projection	Price
MF8005-064-FEP	3 3/4"	2 1/2"	1 5/8"	\$20.00

# CLASSICAL

Elegant and timeless reproduction of period pieces. The finishes in our Classical Range reproduce the elegant shades and tones from traditional European designs.



### Floral Round Knob

Item	Dia.	Projection	Price
MB4479-030	1 1/8"	7/8"	\$12.10
MB4479-035	1 3/8"	1"	\$16.00

### Domed Round Knob

Item	Dia.	Projection	Price
MB4408-030	1 1/8"	1"	\$11.50
MB4408-035	1 3/8"	1 1/8"	\$14.00





<b>Egg Knob Item</b>	<b>Size</b>	<b>Projection</b>	<b>Price</b>
MB4462-040	1 5/8" x 1 1/8"	1 3/8"	\$18.70



<b>Terre Knob Item</b>	<b>Dia.</b>	<b>Projection</b>	<b>Price</b>
MB4231-032	1 1/4"	1 1/8"	\$16.00



<b>Decorated Round Knob Item</b>	<b>Dia.</b>	<b>Projection</b>	<b>Price</b>
MB4401-035	1 3/8"	1 1/8"	\$13.30



<b>Beaded Round Knob Item</b>	<b>Dia.</b>	<b>Projection</b>	<b>Price</b>
MB4404-035	1 3/8"	1 1/8"	\$13.30



<b>Classic Round Knob Item</b>	<b>Dia.</b>	<b>Projection</b>	<b>Price</b>
MB4226-030	1 1/8"	1"	\$11.90
MB4226-035	1 3/8"	1 1/8"	\$16.00



<b>Luca Knob Item</b>	<b>Size</b>	<b>Projection</b>	<b>Price</b>
MB4090-045	1 5/8" x 3/4"	1"	\$11.10



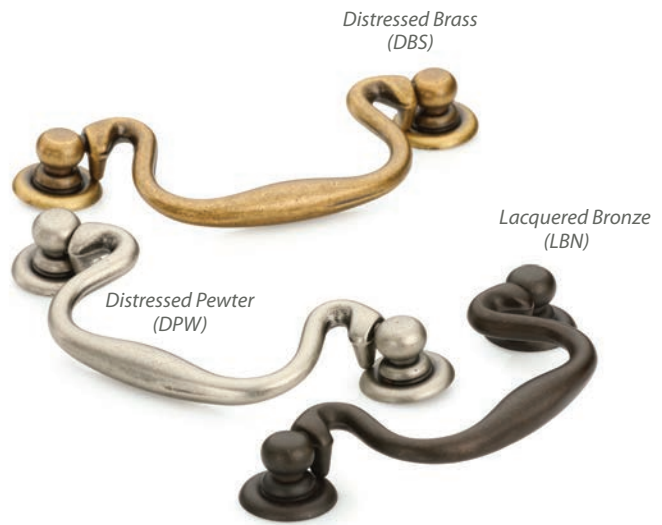
**Dome Knob**

Item	Dia.	Projection	Price
MB4316-035	1 3/8"	1 1/8"	\$19.70
MB4316-040	1 5/8"	1 1/4"	\$22.20

Knob features a ceramic insert

**Swan Drop Pull**

Item	Size	CTC	Price
MB3019-096	4 1/2" x 1 7/8"	3 3/4"	\$28.10



**Orante Drop Pull**

Item	Size	CTC	Price
MB3085-096	4 7/8" x 2"	3 3/4"	\$30.40



**Classic Drop Pull**

Item	Length	Width	Price
MB1396-053	2 1/2"	3/4"	\$14.80



Lacquered Bronze (LBN)



**Floral Ring Pull**

Item	Dia.	Price
MB2224-047	1 7/8"	\$22.40
MB2224-055	2 1/8"	\$25.90

**Classic Ring Pull**

Item	Size	Price
MB2212-050	2"	\$16.20



Distressed Brass (DBS)

Lacquered Bronze (LBN)

Distressed Pewter (DPW)



**Classic Round Drop Pull**

Item	Dia.	Price
MB9213-042	1 5/8"	\$12.30

**Faux Screw Bin Pull**

Item	Size	Projection	CTC	Price
MB5120-064	3 3/4" x 1 1/2"	3/4"	2 1/2"	\$15.10



Distressed Pewter (DPW)



Distressed Brass (DBS)



Distressed Pewter (DPW)



**Classic Cup Pull**

Item	Size	Projection	CTC	Price
MB5332-032	3 7/8" x 1 3/8"	3/4"	1 1/4"	\$16.00

Lacquered Bronze (LBN)



Distressed Brass (DBS)



Distressed Pewter (DPW)

**Paxton Pull**

Item	CTC	Length	Width	Projection	Price
MB5191-160	6 5/16"	6 5/8"	1/2"	1 1/4"	\$36.00
MB5191-320	12 5/8"	12 7/8"	1/2"	1 1/4"	\$63.30

Lacquered Bronze (LBN)







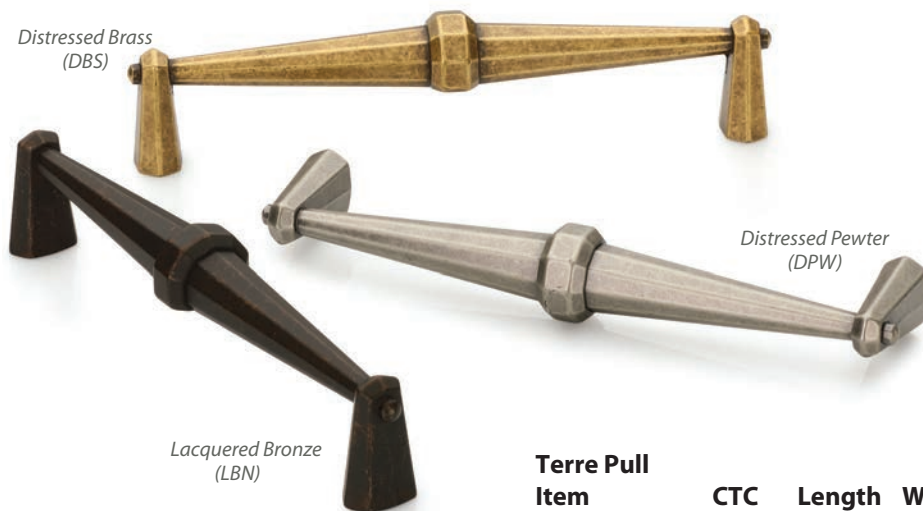
**Stilo Pull**

Item	CTC	Length	Width	Projection	Price
MB5217-096	3 3/4"	4 5/8"	3/4"	1 1/8"	\$24.60
MB5217-160	6 5/16"	7 1/8"	3/4"	1 1/8"	\$33.00
MB5217-320	12 5/8"	13 3/8"	3/4"	1 1/8"	\$63.50



**Luca Pull**

Item	CTC	Length	Width	Projection	Price
MB5090-096	3 3/4"	5 5/8"	13/16"	1 1/8"	\$17.70
MB5090-128	5 1/16"	7"	7/8"	1 1/8"	\$24.40



**Terre Pull**

Item	CTC	Length	Width	Projection	Price
MB5231-160	6 5/16"	6 7/8"	1"	1 1/2"	\$50.50



Lacquered Bronze (LBN)

Distressed Pewter (DPW)

**Classic Pull**

Item	CTC	Length	Width	Projection	Price
MB5341-096	3 3/4"	5 1/8"	13/16"	1"	\$25.30
MB5341-128	5 1/16"	6 3/8"	13/16"	1"	\$29.80

Distressed Brass (DBS)



**Mission Pull**

Item	CTC	Length	Width	Projection	Price
MB5190-160	6 5/16"	6 3/4"	3/8"	1 1/4"	\$36.50
MB5190-320	12 5/8"	13"	3/8"	1 1/4"	\$62.60

Distressed Pewter (DPW)

Distressed Brass (DBS)

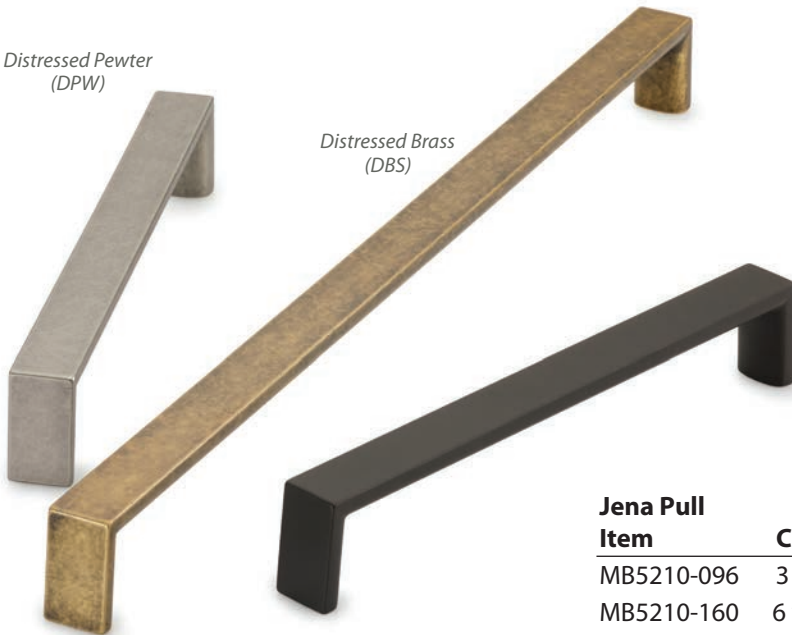


Lacquered Bronze (LBN)

Distressed Pewter (DPW)

Distressed Brass (DBS)

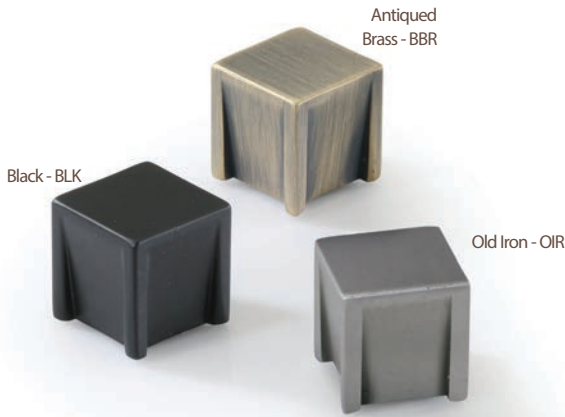
Lacquered Bronze (LBN)



**Jena Pull**

Item	CTC	Length	Width	Projection	Price
MB5210-096	3 3/4"	4 1/8"	5/8"	1 1/8"	\$35.50
MB5210-160	6 5/16"	6 5/8"	5/8"	1 1/8"	\$42.00
MB5210-320	12 5/8"	12 7/8"	5/8"	1 1/8"	\$72.40

# INDUSTRIAL COLLECTION



Item	Size	Projection	Price
MP0359-025	1 x 1"	7/8"	\$27.10



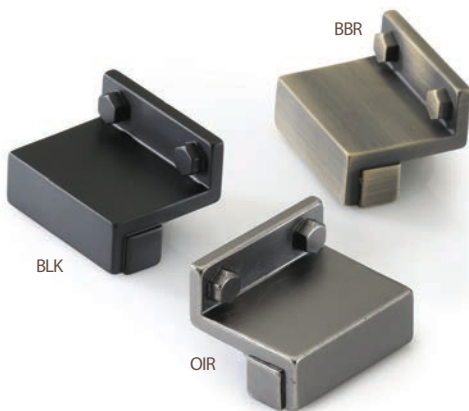
Item	Dia.	Price
MP0163-050	2 1/4"	\$20.90



Item	Length	Width	Projection	Price
MP0392-038	1 1/2"	1 3/16"	1"	\$22.80



Item	Dia.	Projection	Price
MP0387-050	2"	1"	\$22.20



Item	CTC	Length	Height	Projection	Price
MP0384-032	1 1/4"	1 13/16"	1 3/16"	1 5/16"	\$27.10

Antiqued  
Brass - BBR



Black  
BLK



Old Iron  
OIR



Item	CTC	Length	Width	Projection	Price
MP0078-160	5 1/16"	7 1/4"	9/16"	1 3/16"	\$29.20
		or 6 5/16"			



BBR

BLK

OIR

Item	CTC	Length	Height	Projection	Price
MP0384-128	5 1/16"	8 1/8"	1 3/16"	1 5/16"	\$36.00
		or 7 9/16"			

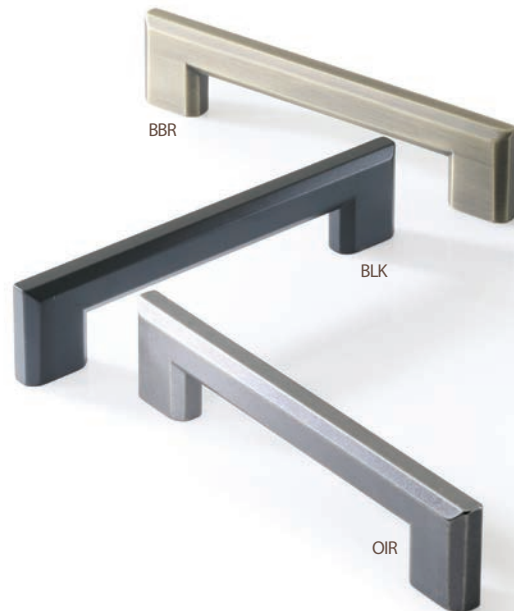


BBR

BLK

OIR

Item	CTC	Length	Width	Projection	Price
MP0102-128	5 1/16"	5 1/2"	5/8"	1"	\$22.20



BBR

BLK

OIR

Item	CTC	Length	Width	Projection	Price
MP0086-128	5 1/16"	6 3/16"	1/2"	1 3/8"	\$27.10





Item	CTC	Length	Width	Projection	Price
MP0289-096	3 3/4"	5 3/8"	1/2"	1"	\$20.90



Item	CTC	Length	Width	Projection	Price
MP0088-128	5 1/16"	5 1/2"	1 1/4"	1"	\$30.50



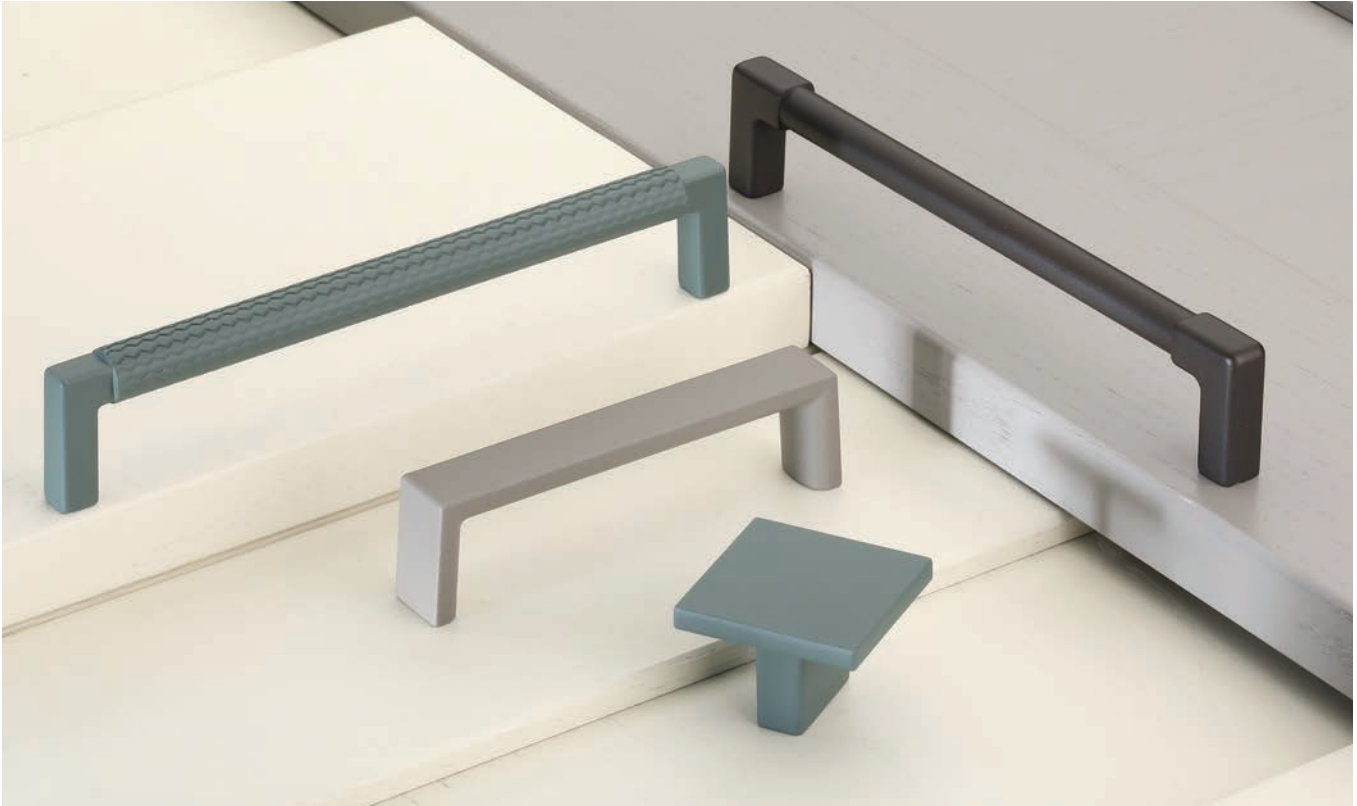
Item	CTC	Length	Width	Projection	Price
MP0085-128	5 1/16"	7"	7/16"	1 7/16"	\$27.70



Item	CTC	Length	Width	Projection	Price
MP0087-128	5 1/16"	5 1/2"	1 3/16"	1 3/16"	\$30.50

# SILK TOUCH

Our Silk Touch cabinet hardware is a fusion of a satin silk texture infused with a modern color palette.



<b>Paxton Pull Item</b>	<b>CTC</b>	<b>Length</b>	<b>Width</b>	<b>Projection</b>	<b>Price</b>
MB5191-160	6 <sup>5</sup> / <sub>16</sub> "	6 <sup>5</sup> / <sub>8</sub> "	1/2"	1 1/4"	\$36.20
MB5191-320	12 <sup>5</sup> / <sub>8</sub> "	12 <sup>7</sup> / <sub>8</sub> "	1/2"	1 1/4"	\$62.00

Silk Touch Green (SGR)

Silk Touch Grey (STG)

Silk Touch Black (SBK)

**Square Knob Item**

Item	Size	Projection	Price
MB1254-033	1 1/4"	1 1/8"	\$18.70
MB1254-040	1 5/8"	1 1/8"	\$21.20



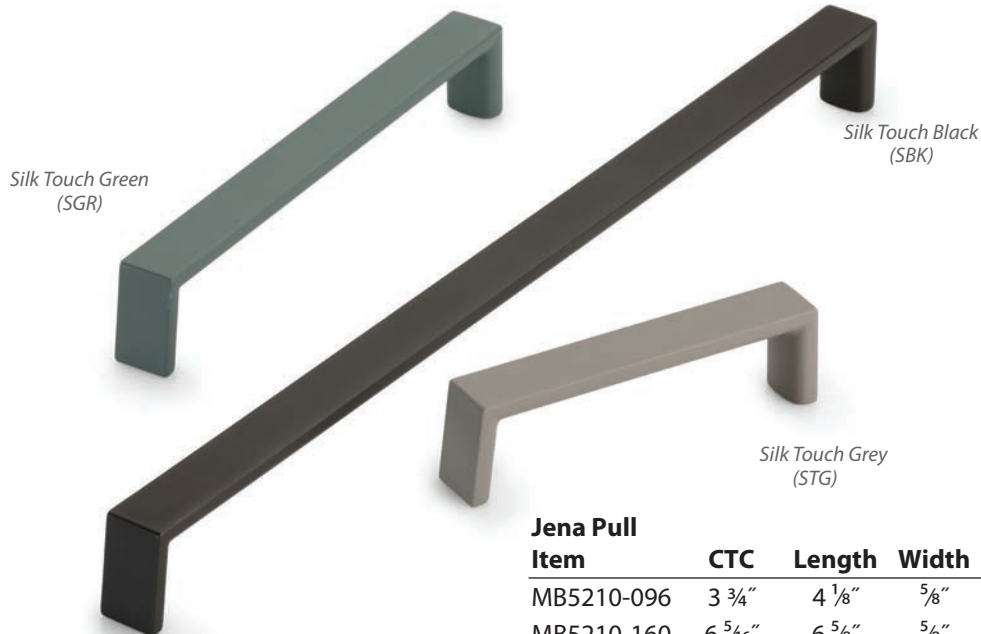
Silk Touch Green (SGR)

Silk Touch Grey (STG)

Silk Touch Black (SBK)

**Mission Pull Item**

Item	CTC	Length	Width	Projection	Price
MB5190-160	6 5/16"	6 3/4"	3/8"	1 1/4"	\$34.50
MB5190-320	12 5/8"	13"	3/8"	1 1/4"	\$57.70



Silk Touch Green (SGR)

Silk Touch Black (SBK)

Silk Touch Grey (STG)

**Jena Pull Item**

Item	CTC	Length	Width	Projection	Price
MB5210-096	3 3/4"	4 1/8"	5/8"	1 1/8"	\$31.80
MB5210-160	6 5/16"	6 5/8"	5/8"	1 1/8"	\$33.70
MB5210-320	12 5/8"	12 7/8"	5/8"	1 1/8"	\$55.40

# MYSTIC

With designs that celebrate classic lines and offer timeless grace, our Mystic Cabinet Hardware is offered in three distinct finishes.



<b>Dot Cabinet Knob</b>			
Item	Dia.	Projection	Price
MG0785-000	5/8"	1 1/8"	\$16.00



<b>Parisian Knob</b>			
Item	Dia.	Projection	Price
MG0826-000	1 1/8"	1"	\$16.00



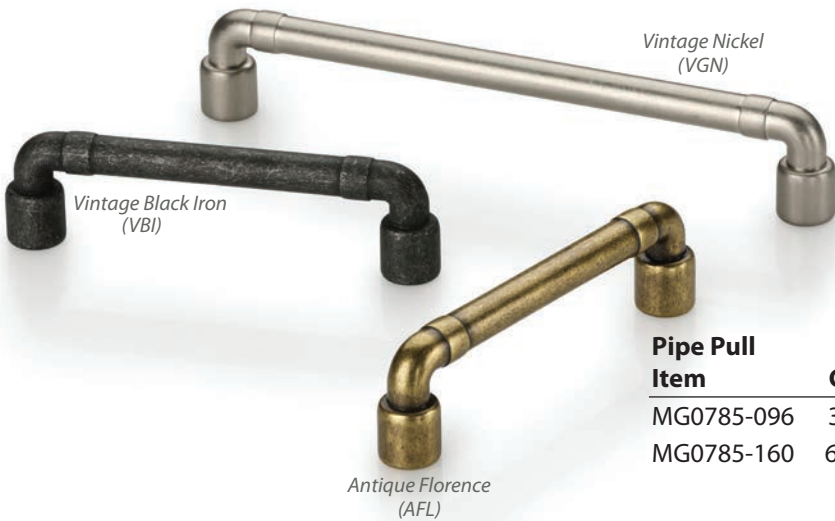
**Distressed Cabinet Knob**

Item	Dia.	Projection	Price
MG0761-000	1 ¼"	1 ⅛"	\$17.20



**Distressed Bar Pull**

Item	CTC	Length	Dia	Projection	Price
MG0761-096	3 ¾"	4 ½"	½"	1 ¼"	\$31.80
MG0761-128	5 ¼"	5 ¾"	½"	1 ¼"	\$36.20
MG0761-192	7 ⅞"	8 ¼"	½"	1 ¼"	\$50.70



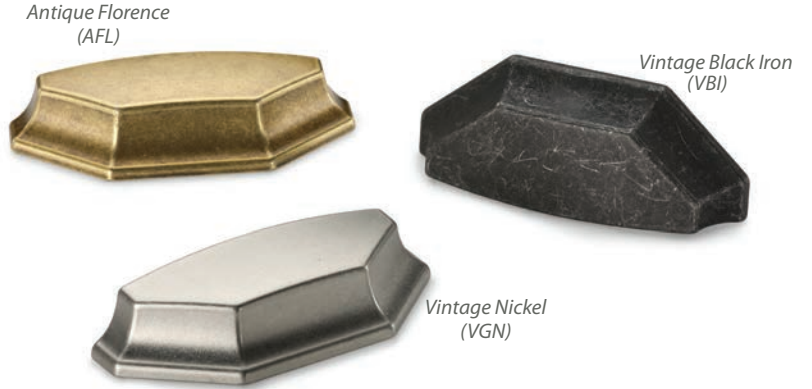
**Pipe Pull**

Item	CTC	Length	Dia	Projection	Price
MG0785-096	3 ¾"	4 ¾"	⅝"	1 ⅛"	\$30.80
MG0785-160	6 ⅝"	6 ⅞"	⅝"	1 ⅛"	\$39.40



**Avenue Knob**

Item	Size	Projection	Price
MG0832-000	1 1/2" x 1 1/8"	1"	\$16.00



**Avenue Bin Pull**

Item	CTC	Length	Width	Projection	Price
MG0832-064	2 1/2"	4"	1 1/2"	7/8"	\$24.40



**Oval Capri Knob**

Item	Size	Projection	Price
MG0799-000	1 1/8" x 1 5/8"	1 1/8"	\$15.80



**Banded Pull**

Item	CTC	Length	Width	Projection	Price
MG0770-096	3 3/4"	4 3/4"	7/8"	7/8"	\$24.40
MG0770-160	6 5/16"	7 1/4"	7/8"	7/8"	\$31.20
MG0770-320	12 5/8"	13 1/2"	7/8"	7/8"	\$63.10



Parisian Pull Item	CTC	Length	Foot Width	Projection	Price
MG0826-128	5 1/16"	6"	1"	1 3/8"	\$32.50
MG0826-160	6 5/16"	7 1/4"	1"	1 3/8"	\$40.10
MG0826-320	12 5/8"	13 5/8"	1"	1 3/8"	\$64.80



Fold Pull Item	CTC	Length	Width	Projection	Price
MG0787-096	3 3/4"	4 3/8"	3/4"	1"	\$25.40
MG0787-128	5 1/16"	5 5/8"	3/4"	1"	\$28.10
MG0787-192	7 9/16"	8 1/8"	3/4"	1"	\$38.90
MG0787-320	12 5/8"	13 1/8"	3/4"	1"	\$57.50

# DESIGNER WOOD

---

Manzoni range includes a unique collection of modern and contemporary designs produced in Walnut and Oak. Our sleek and elegant designs, complemented by the natural grain and color of the wood gives a unique and fresh look to complement various design themes.

Our Designer Wood Collection is produced from natural timbers, as such there may be slight variations in color and grain from piece to piece. The surface of the product is treated with a lacquer to protect the wood.





Item	Length	CTC	Price
MN0337-160	7 1/4"	6 5/16"	\$26.30
MN0337-224	9 3/4"	8 13/16"	\$30.00
MN0337-288	12 1/4"	11 5/16"	\$35.90

Projection: 1 1/4"

Width: 1/2"



Item	Length	CTC	Width	Projection	Price
MN6778-032	3 1/8"	1 1/4"	1"	1"	\$23.50
MN6778-160	9 1/2"	6 5/16"	1"	1"	\$39.00
MN6778-224	13 1/2"	8 13/16"	1 1/8"	1 1/8"	\$48.10
MN6778-320	18 1/4"	12 5/8"	1 1/4"	1 1/4"	\$76.20



Item	Length	CTC	Price
MN7792-160	8 5/8"	6 5/16"	\$32.90
MN7792-224	11 1/4"	8 13/16"	\$39.60
MN7792-320	15 3/4"	12 5/8"	\$47.40

Projection: 1 3/8"

Width: 1 3/8"



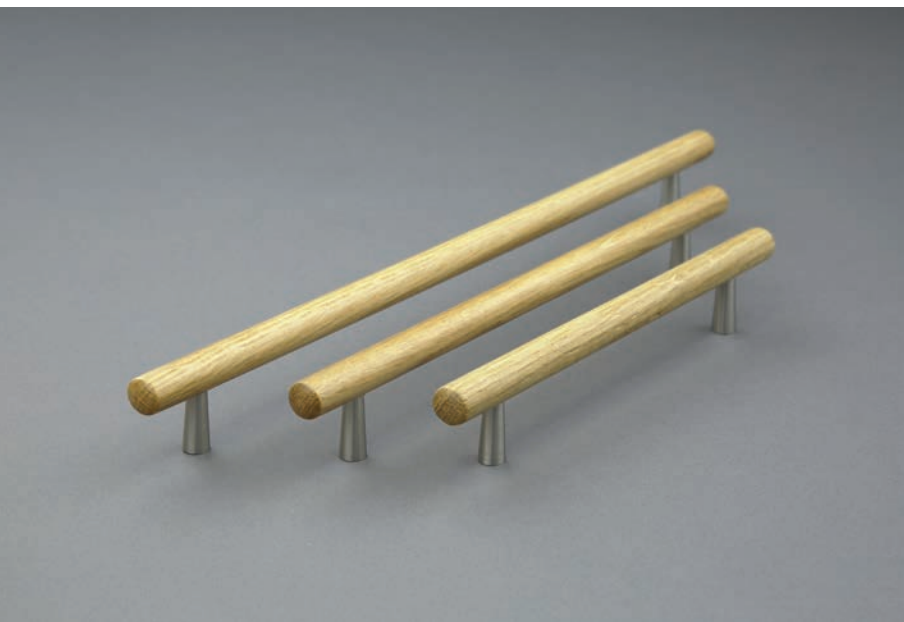
Item	Length	CTC	Price
MN7730-224	10 5/8"	8 13/16"	\$60.30
MN7730-320	15 1/4"	12 5/8"	\$86.40

Projection: 1 5/8"  
Width: 1 3/8"



Item	Length	CTC	Price
MN7623-192	8 1/4"	7 9/16"	\$56.90

Projection: 1 5/8"  
Width: 5/8"



Item	Length	CTC	Price
MN7763-160	8 5/8"	6 5/16"	\$38.30
MN7763-224	11 1/8"	8 13/16"	\$44.00
MN7763-320	14 7/8"	12 5/8"	\$52.20

Projection: 1 1/2"  
Width: 1/2"

Item	Length	CTC	Price
MN6770-160	7 7/8"	6 5/16"	\$46.20
Projection: 1 1/8"			
Width: 1 1/2"			



Item	Length	CTC	Price
MN7150-160	6 7/8"	6 5/16"	\$30.60
MN7150-224	9 1/2"	8 13/16"	\$40.90
Projection: 1 5/8"			
Width: 7/8"			



Item	Length	CTC	Price
MN6711-192	13 5/8"	7 9/16"	\$44.80
Projection: 1"			
Width: 1 1/8"			



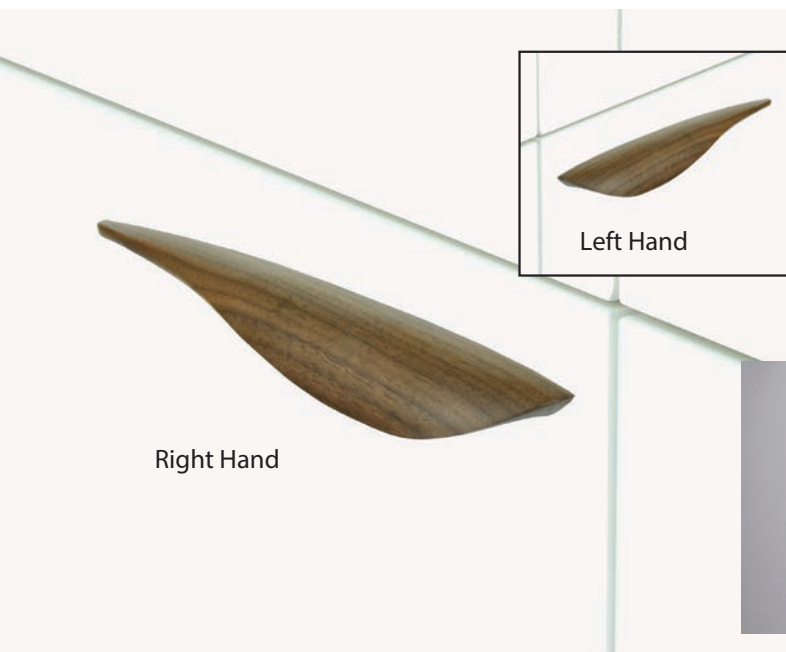


Item	Length	CTC	Width	Projection	Price
MN6800-032	2 5/8"	1 1/4"	1"	3/4"	\$21.30
MN6800-160	9 3/4"	6 5/16"	1 1/8"	1"	\$42.20



Item	Length	CTC	Price
MN7160-160	7 5/8"	6 5/16"	\$32.40
MN7160-224	10 1/8"	8 13/16"	\$39.60

Projection: 1 5/8"  
Width: 5/8"



Item	Handing	Length	CTC	Price
MN681L-128	Left Handed	10"	5 1/16"	\$44.00
MN681R-128	Right Handed	10"	5 1/16"	\$44.00

Projection: 1"  
Width: 1 1/8"







Walnut  
(WNL)

Oak  
(OKL)

Item	Length	CTC	Projection	Width	Price
MN7827-128	5 5/8"	5 1/16"	1 3/4"	5/8"	\$37.40
MN7827-224	9 1/2"	8 13/16"	1 3/4"	5/8"	\$57.70



Walnut  
(WNL)

Oak  
(OKL)

Item	Length	CTC	Projection	Width	Price
MN7863-128	5 5/8"	5 1/16"	1 3/8"	5/8"	\$29.10
MN7863-192	8 3/4"	7 9/16"	1 3/8"	5/8"	\$37.60
MN7863-256	10 3/4"	10 1/16"	1 3/8"	5/8"	\$51.60



Walnut  
(WNL)

Oak  
(OKL)

Item	Length	CTC	Projection	Width	Price
MN6870-192	11 5/8"	7 9/16"	1 3/8"	1/2"	\$48.10
MN6870-256	15 1/2"	10 1/16"	1 3/8"	1/2"	\$56.00



Oak (OKL)

Walnut (WNL)

Item	Length	CTC	Projection	Width	Price
MN6904-128	7"	5 1/16"	1 1/8"	5/8"	\$35.10
MN6904-224	10 3/4"	8 13/16"	1 1/8"	5/8"	\$50.20



Oak (OKL) with Satin Brass



Oak (OKL) with Satin Nickel



Walnut (WNL) with Satin Brass



Walnut (WNL) with Satin Nickel

Item	Metal Finish	Price
MN4370-026	Brass	\$38.40
MN4372-026	Nickel	\$38.40

1" diameter, 1" projection



Walnut (WNL)



Oak (OKL)



Walnut (WNL)

Oak (OKL)

Item	Dia.	Projection	Price
MN4470-033	1 1/4"	1 1/8"	\$21.50

Item	Dia.	Projection	Price
MN4491-038	1 1/2"	7/8"	\$22.80



Item	Diameter	Projection	Price
MN4328-065	2 1/2"	3/4"	\$27.40



Item	Length	CTC	Width	Projection	Price
MN4403-016	2 1/8"	5/8"	1 7/8"	1 1/2"	\$22.70



Item	Diameter	Projection	Price
MN4415-056	2 1/2"	1 1/8"	\$21.30



Item	Length	CTC	Width	Projection	Price
MN6765-032	2 1/2"	1 1/4"	2 3/8"	7/8"	\$32.40



Item	Length	CTC	Width	Projection	Price
MN4428-035	1 3/8"	5/8"	1 3/8"	1"	\$29.20
MN4428-050	2"	1 1/4"	2"	1"	\$31.60



Item	Length	CTC	Width	Projection	Price
MN4431-016	2"	5/8"	1 3/8"	1"	\$21.30
MN4431-032	2 7/8"	1 1/4"	2"	1"	\$22.70



Item	Length	CTC	Width	Projection	Price
MN4323-032	2 3/4"	1 1/4"	2 3/4"	7/8"	\$23.90

## Product Use and Care

All of our products are designed for interior use only. Products should be cleaned only with a soft cloth dampened with clean water, and wiped dry with a cloth. Water residue should not be left on the product as chemicals or minerals contained within may damage the protective coating and attack the finish. No cleaners, whether chemical or organic should be used to clean the products as they may attack the finish and void the warranty.

## Warranty

BRAND	RANGE & FINISHES	MECHANICAL WARRANTY	INTERIOR FINISH WARRANTY
Ashley Norton	Solid Bronze – BZ, NB, WL, WM	10 years	No warranty (living finish)
Ashley Norton	Solid Bronze - TC	10 years	10 years
Ashley Norton	Solid Brass – DOR, PNI	10 years	No warranty (living finish)
Ashley Norton	Solid Brass – GSN, PCH, MSB, BLK	10 years	10 years
Manzoni	Fine English Pewter – FEP	1 year*	No warranty (living finish)
Manzoni	Urban – MSN, PCR, FBN, SBP	3 years	3 years
Manzoni	Stainless Steel – SST	3 years	3 years
Manzoni	Wood – WNL, OKL	3 years	3 years
Manzoni	Industrial - BLK, BBR, OIR	3 years	3 years
Manzoni	Classical - DPW, DBS, LBN	3 years	3 years
Manzoni	Silk Touch - STG, SGR, SBK	3 years	3 years
Manzoni	Mystic - AFL, VGN, VBI	3 years	3 years

Ashley Norton and Manzoni extend warranties as indicated above to the original residential purchaser, providing the product has been installed indoors, in strict accordance with our installation instructions. Items in a 'living finish' (see below) have no Finish Warranty.

The only obligation of Ashley Norton or Manzoni will be to repair, replace or refund the defective product or parts upon presentation, together with proof of purchase dated within the warranty period. We assume no liability for any labor charges regarding the removal or reinstallation of the products; nor will we cover any freight, postage, or handling expense related to the product. This warranty does not cover damage caused by accident, misuse, abuse, tampering, extreme climatic conditions, improper installation or products used in commercial applications. In no event shall Ashley Norton or Manzoni be liable for any incidental or consequential damages arising from the sale or use of our products.

**(\* Products in FEP finish have limited availability, and will be refunded if no stock is available.**

Some of the finishes and patinas shown in this brochure are 'living finishes'. These finishes may highlight, oxidize or rub off in places due to frequency of use; therefore such events do not constitute a defect. Thus, Ashley Norton cannot guarantee these finishes and we will not have any obligation to repair or replace such finishes under this warranty. The living finishes in this brochure are:

Solid Bronze: Dark Bronze (BZ), Natural Bronze (NB), White Medium (WM) and White Bronze (WL)

Solid Brass: Oil Rubbed Bronze (DOR) and Polished Nickel (PNI)

Fine English Pewter: Fine English Pewter (FEP)





*Ashley Norton*



MANZONI

210 West Parkway Suite 1  
Pompton Plains, NJ 07444  
United States

Tel: (973) 557 4551  
Fax: (973) 767 1202

[www.manzoni.us](http://www.manzoni.us)  
[info@manzoni.us](mailto:info@manzoni.us)

Printed in United Kingdom