

## BTS80 FLOOR CLOSER



**BTS80**

- Replacement body is 13-7/16"L x 2-3/8"D
- Cover not included
- Mechanical backcheck at approximately 70°
- Selectable delayed action between 175° and 75°
- Delayed action is functional when hold open is not engaged
- Selectable multipoint hold open between approximately 75° and 175°
- Adjustment for hold open between 75° and 105°
- Accommodates doors weighing up to 660 pounds and 4'-6" wide interior and 4'-0" exterior
- Closer adjustment in cement case provides lateral and longitudinal adjustment of 1/4" and height adjustment of 5/32"

MFG #	SIZE	EZ #
BTS80 2	2	036857
BTS80 3	3	036858

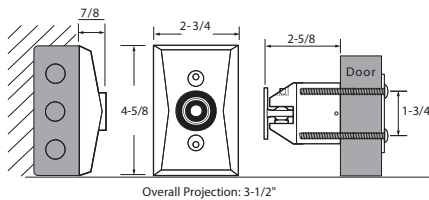
## ELECTROMAGNETIC DOOR HOLDER

D

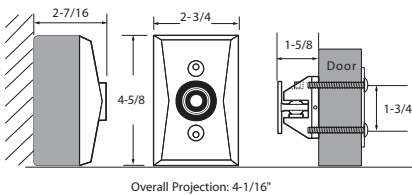
**BHMA**  
GRADE 1



**EM508 24VAC**



**EM504 24VAC**



**EM508 24VAC**

- Dual voltage capability reduces stocking requirements
- Low current draw allows savings on power supplies and backup batteries
- Optional extension rods fit on standard catch plate to accommodate deeper door to wall conditions
- Low residual magnetism allows easy release of door
- All electrical values +10% to -15%.
- Floor & wall mounted styles
- Can be manually pulled from hold open position
- Silent operation
- Holding force 15-25 lbs nominal
- Can be manually pulled from hold open position with 25-40 maximum hold open force
- Voltage: 24 VAC/DC or 120 VAC
- Amps: .015
- Meets ADA requirements with minimal spring force door closers
- ANSI A156.15 Grade 1
- UL and cUL listed
- Finish: Satin chrome

**EM504**

- Semi flush wall mount
- Overall projection: 3-1/2"

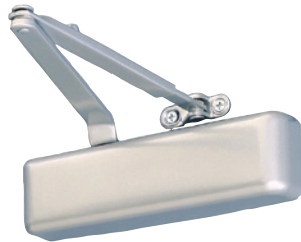
**EM508**

- Surface wall mount
- Overall projection: 4-1/16"

MFG #	DESCRIPTION	EZ #
EM504 24120 689	Long Catch	028943
EM508 24120 689	Short Catch	028942

### 4030 SERIES CAST IRON UNIVERSAL CLOSER

**BHMA**  
CLASSIFIED  
**GRADE 1**



- A cast iron, universal closer designed specifically for doors in moderate traffic conditions
- Standard new 4030 series closer is shipped with forged regular arm, metal cover and wood/self-tapping machine screw pack
- Non-sized 4031 cylinder is adjustable from sizes 1 to 4 for exterior doors to 36" (914mm) and interior doors to 48" (1219mm)
- Closer mounts hinge side, top jamb, and parallel arm, on either right or left swinging doors
- Closer meets ADA requirements
- Cast Iron
- Forged steel main arm
- Heat treated steel pinion
- All weather fluid reduces seasonal adjustments
- UL and cUL listed for self-closing doors without hold-open
- ANSI Standard A156.4, grade 1 certified

MFG #	FINISH	EZ #
4031REG689	Aluminum	087914

### 4040SE SENTRONIC® CLOSERS

**BHMA**  
CLASSIFIED  
**GRADE 1**



- Provides single point hold-open for fire and smoke barrier doors
- Door is held open until current interruption releases the holding mechanism and the door closes
- Single lever track arm closer is specifically designed for interior doors
- Available 24VDC or 120VAC
- Non-sized for interior doors up to 4'0"
- Hold-open force is adjustable between 85° to 110° in approximately 3° increments (push side) and maximum to 95° (pull side)
- Momentary on/off switch board assembly for testing door release also provides over-voltage protection
- Functions as a full rack and pinion closer when hold-open is not engaged or current is interrupted
- Closer mounts on either push or pull side of the door
- Interfaces with fire alarm systems
- UL listed for smoke barrier or labeled fire doors
- cUL listed for self-closing doors without hold-open
- Tested and certified under ANSI Standard A156.15
- Conforms to life safety code, NFPA 101

MFG #	VOLTAGE	FINISH	EZ #
4040SE 120V 689	120VAC	Aluminum	073106
4040SE STD AL24V TBWMS	24VDC	Aluminum	072694



# MISCELLANEOUS

## STOP KICK DOWN, WIND CHAIN STOP, CYLINDRICAL LOCK, KNOB & LEVER GUARD

### STOP KICK DOWN



- Zinc cast door stop finished in chrome
- Size 4-3/4" from pivot point
- Furnished with rubber tip

MFG #	EZ #
17C 26D	035148

### WIND CHAIN STOP



- Heavy-duty steel welded chain
- Two compression coil springs
- Zinc die-cast mounting brackets
- Grey vinyl cover
- Finish: zinc plated
- Length: 25-1/2"

MFG #	EZ #
CF3560	036914

### GRADE 2 PLUS CYLINDRICAL INTERCHANGEABLE (I/C) CORE LOCK

 MARKS USA

**BHMA**  
CERTIFIED  
GRADE 2



- Knobs: 2-1/4" diameter
- Roses: Adjustable both sides, steel reinforced 2-3/4" diameter
- 2-3/4" T strike
- Door thickness: 1-1/4" to 1-7/8"
- Stocked less small format I/C Core
- cUL listed
- ANSI A156.2

MFG #	FUNCTION	KNOB	LATCH	EZ #
110RAB32D	Entrance	Round	Standard	038531

### KNOB & LEVER GUARD



- Designed to prevent "wrenching" of knobs & levers
- Made of aircraft aluminum and powder coated for long life
- Built in handle allows the door to easily be opened

MFG #	FOR	EZ #
KG1S	Knob	076590
LV1S	Lever	076589

M