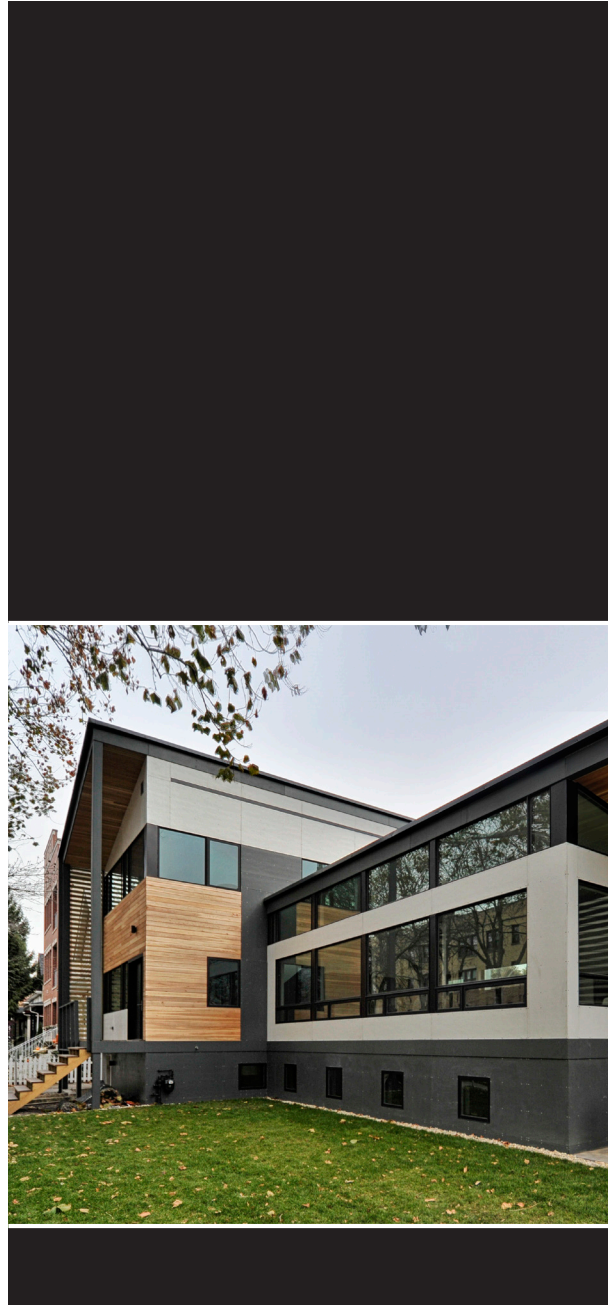


DESIGN DRIVEN
RIGHT SIZED
SUSTAINABLE
TECHNOLOGICAL
DURABLE



THE CREATIVE BRAND

THE Creative is a residential development and architecture company focused on innovative design. Our homes provide an alternative to the “mcmansions” and flipped houses that currently dominate the single family housing landscape.

THE Creative Brand Difference

Design Driven The emphasis is on product design that improves daily living, characterized by a clean aesthetic and a thoughtful layout. Our homes stress an abundance of natural light, a floor plan that flows, efficient utilization of space and site, and precision detailing.

Right-Sized Rather than being too large, spaces are sized to be airy, comfortable, gracious and efficient. The houses are customized to fit reasonably on the lots with ample yard space and light between the homes and their neighbors.

Sustainable The homes feature cost-effective, passive sustainable strategies such as high quality air barriers; high performance insulation; efficient fixtures, appliances and equipment; and smart systems to manage energy usage. These all work together to reduce the use of gas, electricity and water, shrinking your utility bills.

Technological The homes address the impact of technology on the way you live and work. Low voltage wiring and networked systems are integrated into the base design, allowing a seamless use of technology in any space. A multi-purpose home-office allows for frequent telecommuting and is also a supplemental living space. Mechanical and electrical systems are built to be easily managed from your digital devices.

Durable Materials providing long-term durability are incorporated to reduce maintenance costs, extend the life of your home and keep it looking new and clean. Metal roofs, fiber cement siding, cedar accents and aluminum windows clad the building in a refined, resilient enclosure.

Service Focused We make the home buying experience a joy for our buyers. We don't simply finish the job on time. We provide you with a welcome package of home supplies and a digital manual for home operations, with make and model of all equipment, maintenance schedules for the home and important names and numbers. We also provide a two year warranty for our work.

Value Added THE Creative's brand strategies produce a repeatable product, differentiated from current housing stock in both look and feel. Sustainable practices save energy and resources and reduce utility bills. Durable materials reduce maintenance costs. Built-in technology provides a home that is ready to meet your needs. Our goal is to provide you with a beautiful home designed to exceed your expectations. Welcome to THE Creative.

MODEL HOME | 6027 NORTH HERMITAGE



The model home represents the design principles and detailing that guide our developments. The home is clad in a metal roof and durable fiber cement panels from James Hardie. High performance windows from the Weathershield Contemporary Line allow an abundance of natural light into the interior. Cedar accents at the ceilings and walls lend a welcoming warmth to the exterior. A covered outdoor patio provides a space to look out onto the private yard.

MODEL HOME | GREAT ROOM



The interior is characterized by openness and flow and abundant natural light. Crisp, clean detailing contributes a minimalist sensitivity while a rich wood floor - Riverstone Seine from Duchateau - introduces warmth and texture to create a comfortable, peaceful setting.

MODEL HOME | INTERIOR



The two story house has numerous windows facing south and an open stairwell that allows southern light into the center. We stress the importance of natural light. The spaces in the house are bright, spacious and right sized. There is an open, roomy feel throughout the house due to high ceilings, flowing layout, and the size and organization of the windows.

There is an 8' x 14' space at the front of the house off the foyer that can be used as an office, parlor or nursery, adjacent to the master bedroom.

MODEL HOME | INTERIOR



A built-in hutch brings an element of the kitchen into the great room. The base contains a hidden beverage cooler and space for special serving ware and dinnerware. Crystal and bar items are stored above and the counter is a serving buffet.

MODEL HOME | KITCHEN

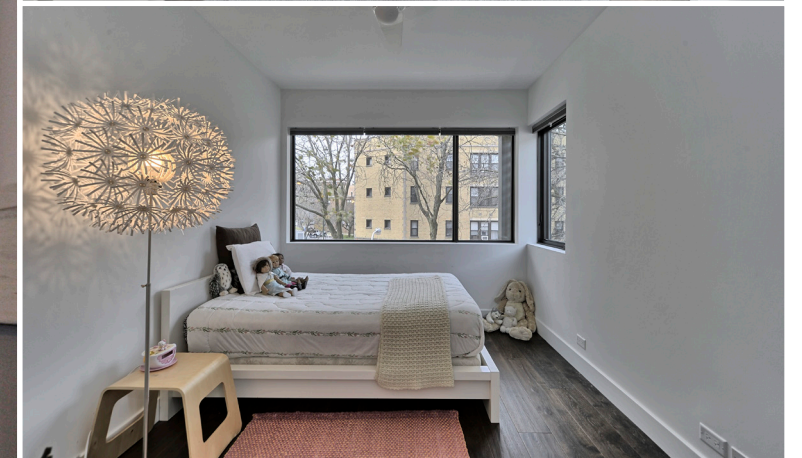


The L-shaped kitchen has a window wall that faces the back patio and it is visually connected to the great room. Many appliances are built-in to create a seamless, open feel. No circulation passes through the kitchen, enabling the cabinet walls to run end-to-end.

There is a high table in the center that can serve as a dining table or a prep table for the kitchen. Its slim profile contributes to the openness of the kitchen.

Rich walnut cabinetry brings warmth and luxury to the simple space, and open shelving is functional, decorative and friendly.

MODEL HOME | BEDROOMS



The master suite is located on the ground floor and next to the office/parlor/nursery at the front of the house. There are 3 bedrooms and a full bathroom upstairs and a rec room, guest room, laundry room and full bath downstairs.

Ceiling fans reduce the need for air conditioning and keep fresh air circulating through the bedrooms. The house is just under 3,600 square feet, including the basement.

MODEL HOME | BATHROOMS



The bathrooms are tiled in neutral colors, whites and grays, to support a variety of decorating schemes. They each incorporate an element of wood as a natural counterpoint to the tile.

The glass shower doors are durable and easy to clean and they also extend the perception of the spaces to the tile walls at the far end.



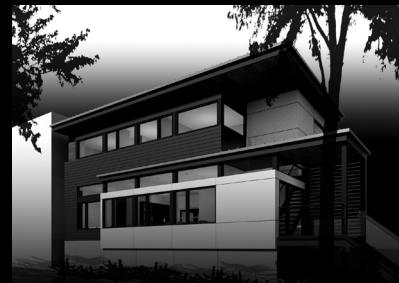
CONTACT INFORMATION

Please visit our website to learn more about THE Creative and to see our current offerings, 1454 W Victoria and 6074 N Hermitage

www.thecreative.build

To set up a tour of the model home or to discuss the purchase of one of our properties, please contact Robert Muller by email or telephone.

Robert Muller
President
THE Creative
6027 N Hermitage Ave, Chicago, IL 60660
312.316.0035
rmuller@thecreative.build



1454 W VICTORIA



6074 N HERMITAGE

MODEL HOME CREDITS

DESIGN

THE Creative
Robert J Muller, AIA, LEED AP

GENERAL CONTRACTING

Newgrange, LLC
Sean Moran, PHIUS Builder Certified, LEED AP BD + C

PHOTOGRAPHY

Matt Driscoll Photography

CONSTRUCTION

Concrete	Laughill Construction
Water Sewer	Keenan Sewer and Water
Framing	Kaspar Construction, Inc.
Electrical	Voltage Systems, Inc.
Mechanical	Caromaya, Inc.
Plumbing	R.W. Dowding Plumbing
Drywall	AG Drywall, Inc.
Tile	Kautz Flooring
Wood Floors	B & M Noble Co.
Countertops	A American
Shower Glass Mirrors	Chicago Glass and Mirror, Inc.
Landscaping	Patch Landscaping

SUPPLIERS

Windows	Weathershield
Exterior Cladding	James Hardie
Roofing	Peterson Aluminum
Entry Door	Therma Tru
Patio Paving	Unilock
Light Fixtures	2Modern.com
Stone and Tile	Tile Shop
Engineered Wood Floors	Duchateau
Cabinet Fronts	Kokeena
Base Cabinetry	IKEA
Mechanical Equipment	Carrier
Plumbing Fixtures	Ferguson
Shower Trim Faucets	Hansgrohe
Sinks	Duravit Kohler
Kitchen Faucet	Blanco
Refrigerator Cooktop	Thermador
Oven Microwave	Bosch
Dishwasher	Miele
Washer Dryer	LG
Range Hood	Best
Beverage Cooler	Marvel

