

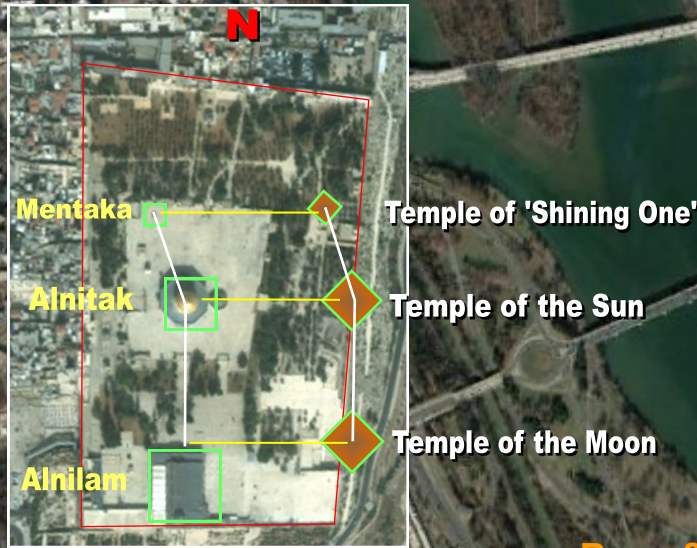
TEMPLE MAN OF COLUMBIA

The purpose of this illustration is to suggest that an encrypted layer can be seen superimposed over the core of the breathe of the *District of Columbia*. It is of the outline of the *Temple of Solomon* but likewise in the fashion of the *Temple of Man*. This notion of the *Temple Man* is the work of the conceptualization of the anthropomorphic Temple-Man by Tony Badillo at www.templesecrets.info. He is the first to 'anthropomorphize' the *Temple of Solomon* with amazing correlations and perspective. Badillo surmises that the Temple of YHVH is an exact representation of His 'form' and 'likeness' of the Messiah. There is a head at the top from a west-east perspective. This head chamber, a perfect square or 'cube' is as is the *Holy of Holies* where the *Ark of the Covenant* was located.

LUCIFERIAN ANTHROPOMORPHIC TEMPLE COUNTERFEIT

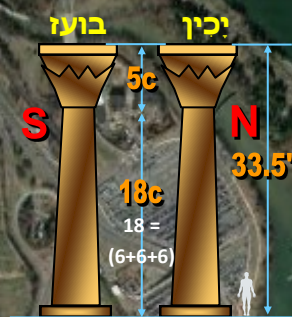
Capitol Hill is the 'capital' which comes from the Latin, 'head' as in 'capital punishment'. There is the *Holies* is what contains the *Table of Bread*, the *Altar of Incense* and the *Menorah Candlestick*. These objects correlate to the core of the main organs of a human body that like the motifs, is where the stomach, the heart and the branches of the lungs as a Menorah represent the 'pneuma' or breath or Spirit of YHVH, the Holy Spirit, etc. The outside chambers of the core of the Temple functioned to store supplies and for priestly preparation. These correspond to the long arms of the body. At the end corresponding to the 5 digits of each hand, there were 10 total small portable receptacles of water that the priests used for the sacrifices. It spoke of how one was to handle the vessels of YHVH and enter in to His Presence, 'with clean hands and a pure heart'.

TEMPLE MOUNT
The City of the KING
THE LION OF THE TRIBE OF JUDAH



ORION-GIZA PATTERN

BOAZ & JACHIN



THE WHITE HOUSE

WASHINGTON MONUMENT
'Phallus'

Pillars

Altar

Lavers

WORLD WAR 2 MEMORIAL

LINCOLN MEMORIAL

'Orion's Belt'

THE MALL

Menorah

Incense

Table of Bread

'Breasts'

CAPITOL HILL

'The Head'

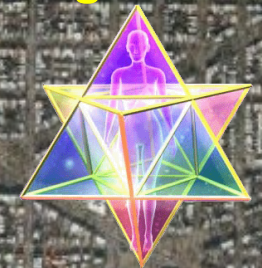
ARK

Right Wing

Left Wing

'THRONE'

Hexagram Core



Scripture speaks of the Body and Temple of Christ, as well as Believers of Jesus Christ whose 'body' is the Temple of the Holy Spirit.

SOLOMON'S TEMPLE
Superimposed Anthropomorphic Man
by Tony Badillo: templesecrets.info

Boaz and Jachin were 2 copper, brass or bronze pillars which stood in the Porch of Solomon's Temple, the first Temple in Jerusalem. These serve as both the gonads and 2 testis of a man that have the seed of reproduction as did the pomegranates that decorated the capitals of the pillars portrays. The long shafts of the pillars represent the legs if one extends the length of the pillars to connect with the *Brazen Altar*. That was outside the Temple and the first motif entering from the outside of the camp of the congregation as it were. Is it no wonder how Jesus Christ could say of the Jewish religious leaders that were imposters, *Synagogue of Satan* and *Elders of Zion* that if they 'destroyed the Temple, He would raise it in 3 days'.

HOLY OF HOLIES

HEAD

HOLIES

MID-FRAME

OUTER COURT

LEGS

GOLD

GOLD & SILVER UTENSLS

BRONZE

Google Earth

Imagery Date: 12/19/2016

38°53'29.72" N 77°01'57.87" W

elev 0 ft

eye alt 22246 ft

© Composition & Some Graphics by
LUIS B. VEGA
vegapost@hotmail.com
www.PostScripts.org
FOR ILLUSTRATION PURPOSES ONLY

MAIN SOURCES
GoogleEarth.com
TempleSecrets.info
Wikipedia.com

Tour Guide

1949