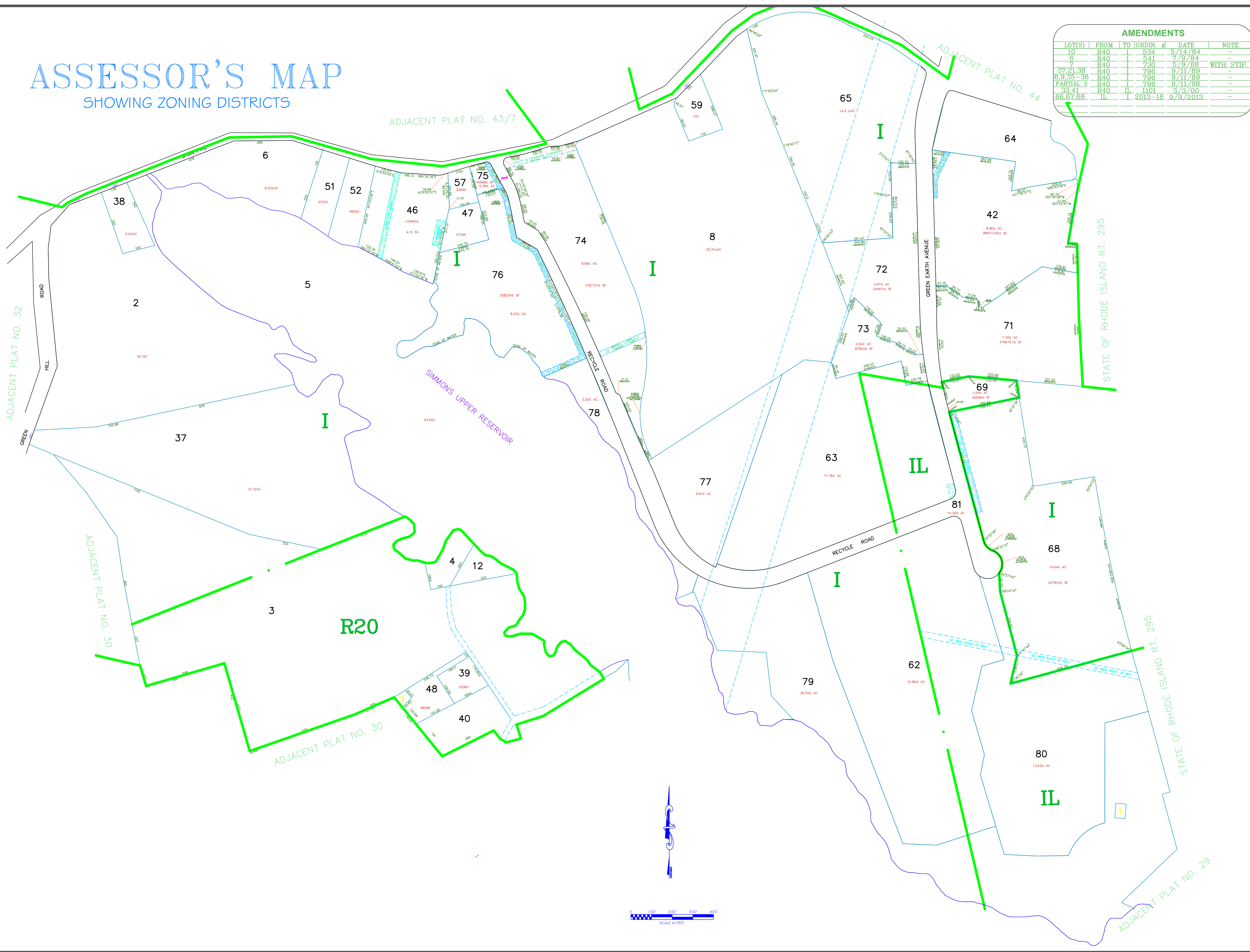


ASSESSOR'S MAP

SHOWING ZONING DISTRICTS



AMENDMENTS					
LOT(S)	FROM	TO	ORDIN. #	DATE	NOTE
10	R40	I	534	5/14/84	-
6	R40	I	541	7/9/84	-
7	R40	I	730	5/9/85	WITH STIP.
37, 21, 38	R40	I	796	9/11/89	-
8, 9, 35-36	R40	I	796	9/11/89	-
PARTIAL 3	R40	I	796	9/11/89	-
33, 41	R40	IL	1101	3/3/00	-
66, 67, 68	IL	I	2013-18	9/9/2013	-

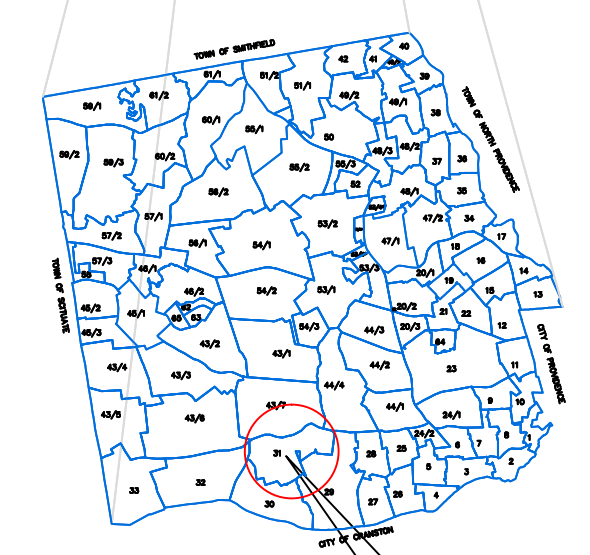
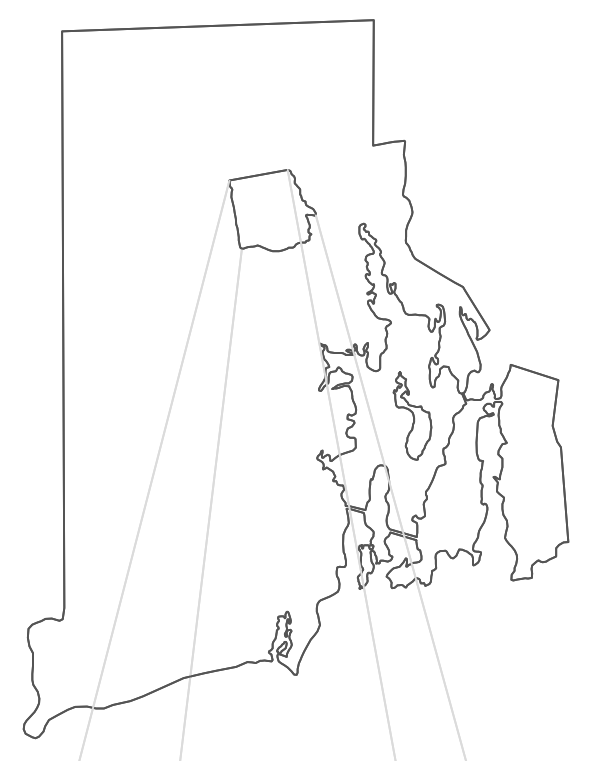
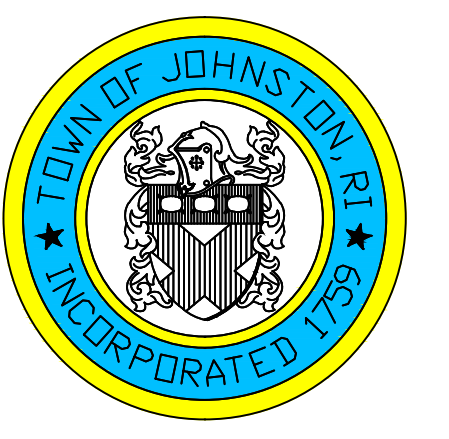
Assessor's Plat Number

31

STATE OF RHODE ISLAND
TOWN OF JOHNSTON

PROVIDENCE COUNTY
INCORPORATED 1759

ASSESSOR'S OFFICE
1385 HARTFORD AVENUE
JOHNSTON, RHODE ISLAND
02919



PLAT INDEX
AREA

Scale: 1:200

Revised By: Benjamin Ng

Last updated: July 28, 2016

Date printed: August 02, 2016

For copies of plat maps, please go to the DPW at 100 Irons Avenue Johnston Rhode Island. Thank you.

NOTE: This map was prepared for the use of the Town of Johnston for assessment and illustrative purposes only. It does not represent a survey of the premises. No liability is assumed as to the sufficiency or accuracy of the data delineated hereon.

